

User Guide

V212 / V212x

Wireless Tablet Client

Copyright © ViewSonic Corporation, 2006. All rights reserved.

ViewSonic and the three birds logo are registered trademarks of ViewSonic Corporation.

Microsoft, Windows, Windows CE, Windows CE Inbox, Explorer and Internet Explorer, Pocket Word, Microsoft Word, ActiveSync, MSN, Excel, Windows RDP, Microsoft Windows CE for Smart Displays, .NET Compact Framework, and the Windows logo are trademarks of Microsoft Corporation in the United States and other countries.

Citrix, WindView, and ICA are registered trademarks of Citrix Systems, Inc. MetaFrame is a trademark of Citrix Systems, Inc.

Intel and X Scale are registered trademarks of Intel Corporation.

VESA is a registered trademark of the Video Electronics Standards Association.

CompactFlash is a trademark of the CompactFlash Association.

ENERGY STAR® is a registered trademark of the U.S. Environmental Protection Agency (EPA).

As an ENERGY STAR® partner, ViewSonic Corporation has determined that this product meets the ENERGY STAR® guidelines for energy efficiency.

Disclaimer: ViewSonic Corporation is not liable for technical or editorial errors or omissions contained herein; nor for incidental or consequential damages resulting from furnishing this material, or the performance or use of this product.

In the interest of continuing product improvement, ViewSonic Corporation reserves the right to change product specifications without notice. Information in this document may change without notice.

No part of this document may be copied, reproduced, or transmitted by any means, for any purpose without prior written permission from ViewSonic Corporation.

Product Registration

To meet your future needs, and to receive any additional product information as it becomes available, please register your product on the Internet at: **www.viewsonic.com**. The *ViewSonic* CD also provides an opportunity for you to print the registration form that you can mail or fax to ViewSonic.

For Your Records	
Product Name:	ViewSonic V212/V212x
Model Number:	VS11297
Document Number:	V212/V212x_UG_ENG_Rev1B 24-July-2006
Serial Number:	_____
Purchase Date:	_____

Product disposal at end of product life

ViewSonic is concerned about the preservation of our environment. Please dispose of this product properly at the end of its useful life. Your local waste disposal company may provide information about proper disposal.

Contents

Introduction

Package Contents	1
Precautions	1
Features	2
Front Control Buttons & Features	2
Rear Connection Ports & Panels	3

Basic Setup (depending on model)

Basic Software Included	4
Charging the Battery	5
Using the AC/DC Power Converter	5

Using the V212/V212x

The Buttons	6
Using the Stylus	7
Calibrating the Touch Screen	8
Adjusting the Stylus Double-tap Rate	8
Battery & Power Properties	9
Battery Power Status	10
Changing the Battery - with an AC Power source	11
Changing the Battery - without an AC Power source	11
Antenna Signal Properties	12
Wireless Connection Signal Status	12
Connection Information	13
Network Settings	14
Make New Connection Settings	14
PCI-ISLP21 Settings	15
Resetting the V212/V212x	16
Soft Reset	16
Hard Reset	16
Firmware Image Upgrade	16
Compact Flash (CF) Cards	17
Using a CF Card	17

Optional Accessories

The Docking Station	18
Commercially Available Accessories	19

Appendix

Cleaning & Maintenance	20
Customer Support	20
Compliance & Safety Notices	21
Specifications	24
Limited Warranty	26

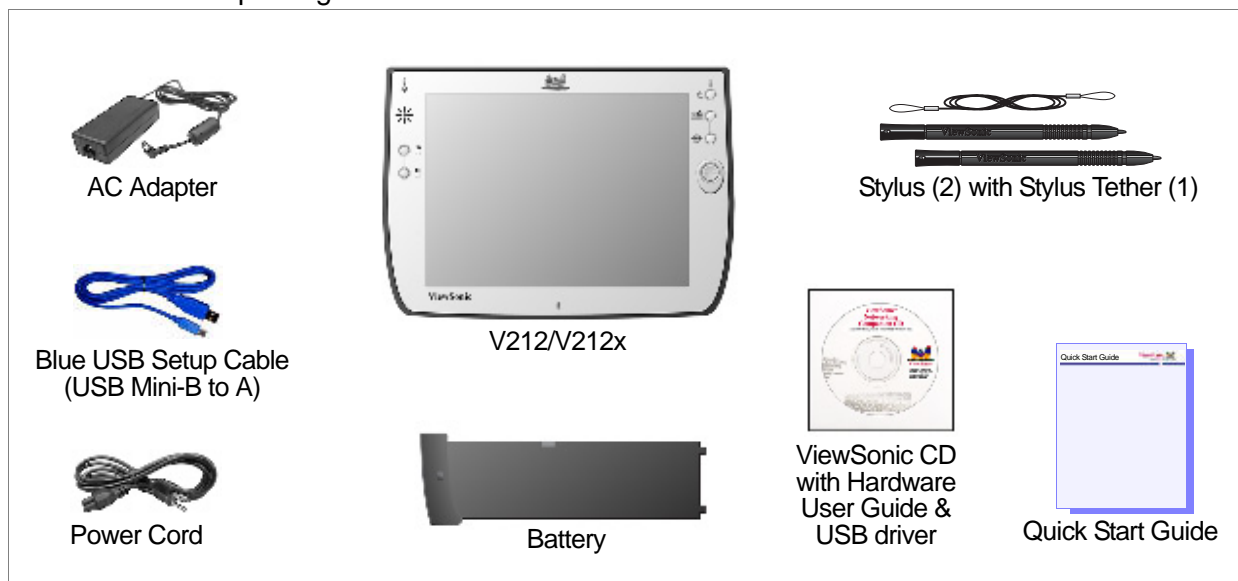
INTRODUCTION

IMPORTANT! Be sure to charge the battery overnight before using the V212/V212x. For more information, see the *Basic Setup* section.

PACKAGE CONTENTS

This user guide helps you setup your **V212/V212x** and introduces you to its many features. **Important:** Save the original box and all packing material for future shipping needs.

Your **V212/V212x** package includes:



Go to the Help and Support Center on your PC for details on using Microsoft software. This manual only covers using the ViewSonic V212/V212x hardware.

PRECAUTIONS

- For best viewing conditions view the screen from a distance of 15" to 18".
- **NEVER REMOVE THE REAR COVER.** Your **V212/V212x** contains high voltage parts. You may suffer serious injury if you touch these parts.
- Avoid exposing the screen to direct sunlight or another heat source. The screen should be facing away from direct sunlight to reduce glare.
- Always handle your **V212/V212x** with care; dropping your **V212/V212x** could void the warranty.
- Do not operate your **V212/V212x** outside in a wet, damp or extremely cold environment.
- Do not place heavy objects on the screen, video cable, or power cord.
- If smoke, abnormal noise, or strange odor is present, immediately switch the **V212/V212x** off and call your dealer or ViewSonic.
- Use only the AC/DC power adapter supplied with your **V212/V212x**.

FEATURES

FRONT CONTROL BUTTONS & FEATURES

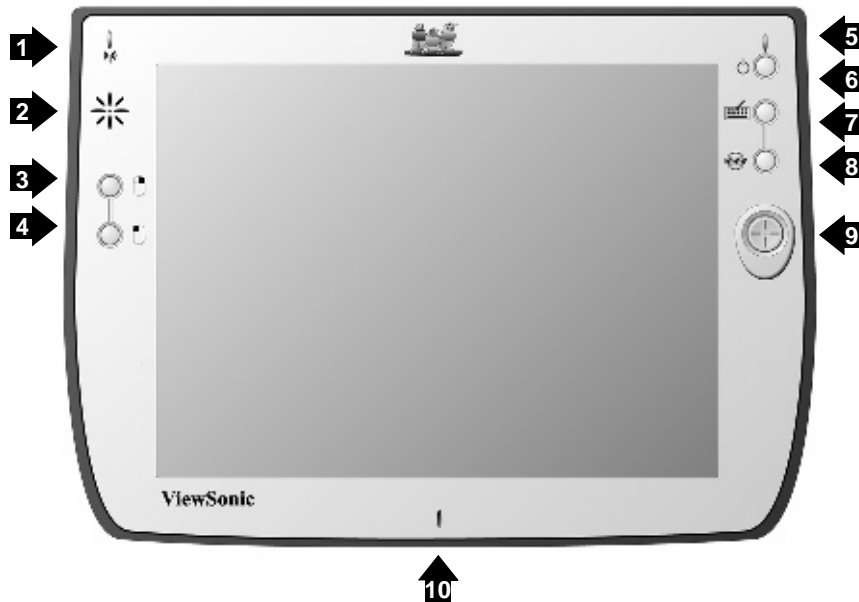


Figure 1: Front of V212/V212x

Features, Lights, and Buttons

1. Antenna Activity Indicator Light
2. Speaker
3. Mouse Button - Right Click
4. Mouse Button - Left Click
5. Power On/Off Indicator Light
6. On/Off Switch
7. Input Panel On/Off Switch
8. Web Browser Button - Log On/Off to the Internet
9. Cursor Navigation Button
10. Microphone

REAR CONNECTION PORTS & PANELS

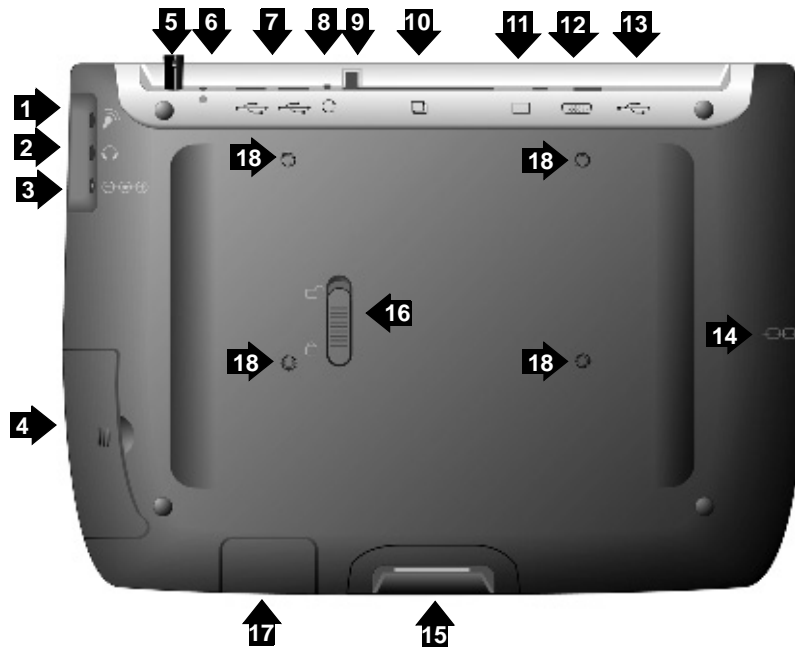


Figure 2: Back of V212/V212x

Ports, Buttons, Slots, Jacks, & Switches

1. Microphone Jack
2. Headphone Jack
3. DC Power Jack
4. Main Battery Compartment
5. Stylus in Storage Slot
6. Stylus Tether Port
7. USB Ports (Two) - for Keyboard and Mouse
8. Reset Button
9. CF Card Eject Button
10. CF Card Slot
11. Consumer Infra Red (CIR)
12. Standard VGA Port
13. USB Mini-B Port
14. Security Lock Port (Kensington Compatible)
15. Docking Port
16. Main Battery Latch
17. Backup Battery
18. VESA Mount Screw Holes (4) (75 mm)

BASIC SETUP (DEPENDING ON MODEL)

This section explains the ports, cables, connections and hardware used to get you started. More details and connection options are explained in the next section, *Using the V212/V212x*.

BASIC SOFTWARE INCLUDED

The following software comes with the **V212/V212x**:

Windows CE® 5.0

- Internet Explorer

- Windows Explorer

- Media Player

- MS WordPad

- Solitaire

- Microsoft Inbox

Citrix® Client

Microsoft ActiveSync

Microsoft File Viewers

- MS Excel Viewer

- MS Image Viewer

- MS PDF Viewer

- MS PowerPoint Viewer

- MS Word Viewer

ViewSonic Wireless Tablet Client **V212/V212x**

CHARGING THE BATTERY

USING THE AC/DC POWER CONVERTER

Before using the **V212/V212x** for the first time, charge the battery for at least 5 hours. You may charge, recharge, and/or operate your **V212/V212x** with available AC power using the AC/DC power converter. Use the AC/DC power converter as shown in the figure below.

Caution: Use only the power converter supplied with your **V212/V212x**.



- 1 Plug the AC/DC cable into the **V212/V212x**.
- 2 Connect the power cord to the AC/DC adapter.
- 3 Plug the power cord into an AC outlet.

Figure 3: Using the AC/DC Power Converter

An optional **V212/V212x** docking station, described later in this manual, may also be used to charge, recharge, and/or operate your **V212/V212x**.

For additional information on battery charging and operation, please review the Battery Power & Properties section of this guide.

USING THE V212/V212X

THE BUTTONS

The buttons on the right and left side of the **V212/V212x** screen give you quick access to utilities and provide navigational control.

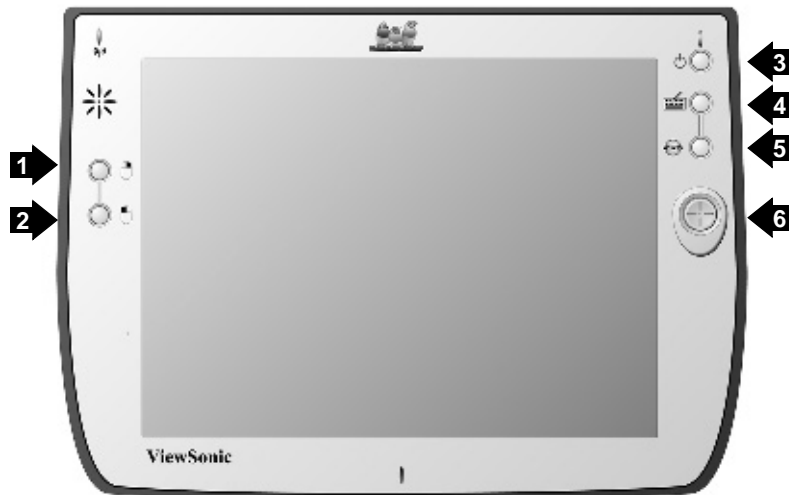


Figure 4: The V212/V212x Buttons

1. **Right-click Button** - Simulates the right-click button on a mouse.
2. **Left-click Button** - Simulates the left-click button on a mouse.
3. **Power Button** - Cycles the unit between On and Stand-by modes.
4. **Input Panel Button** - Toggles the on-screen virtual Keyboard On/Off enabling data input using the stylus.
5. **Web Browser Button** - Launches the **V212/V212x** web browser application.
6. **Cursor Control Button** - Allows you to move the cursor without having to use the stylus or a mouse.

USING THE STYLUS

Use the stylus to “tap” or “double-tap” on an application icon and to select items on the menu. The stylus is also used to “type” on the Input Panel. The two styli that are supplied with your **V212/V212x** are designed for your screen. Using other sharp pointers could damage your screen.



Figure 5: Stylus

When not in use, you can conveniently place your stylus in the storage slot located on the top edge of your **V212/V212x**. A Stylus Tether has been provided to allow you to attach the stylus to the **V212/V212x** so it will not become lost or misplaced.



Figure 6: Stylus with Tether

CALIBRATING THE TOUCH SCREEN

If your touch screen is not responding accurately to taps with the stylus, you may need to recalibrate the screen. To do so:

1. Tap on the control panel's Settings button - the Settings window will open
2. Tap on the General Tab
3. Tap on the Realign Button in the Stylus section
4. Follow the on-screen instructions
5. When finished, tap the screen - the re-calibration is complete

The instructions will ask you to place the stylus on a series of cross-hair target symbols. When doing so, rather than just tapping the screen, hold the stylus in place for a second or two as directed until the program responds.

ADJUSTING THE STYLUS DOUBLE-TAP RATE

The double-tap rate can be set in the Settings window:

1. Tap on the control panel's Settings button - the Settings window will open
2. Tap on the General Tab
3. Double-tap on the checkerboard graphic to set your double tap rate
4. Close the Settings window

To save your user and wireless settings, power-down the unit then resume.

BATTERY & POWER PROPERTIES

Your **V212/V212x** has two power sources, AC (using the AC/DC converter) or battery. To run your **V212/V212x** from an AC outlet, use the supplied AC/DC adapter cable.

It takes the **V212/V212x** approximately three (3) to four (4) hours to recharge while not in use and five (5) hours while in use. In normal operation (when not connected to an AC outlet), the **V212/V212x** operates on battery power alone. A fully charged battery can last up to six (6) hours depending on power consumption factors such as the screen's brightness setting. The use of optional CF card accessory will also affect battery life.

CAUTION: Replace only with a **V212/V212x** series battery:
Part Number BAT-004



Initial Charging: Failure to fully charge the battery for 5 hours before turning on the **V212/V212x** for the first time may reduce the overall service life of the battery.

If the battery is left unattended too long, it may discharge completely. Complete discharge may damage the battery's ability to recharge properly.



Storage: If you are not using the **V212/V212x** on a daily basis, store the unit by plugging it into an AC outlet using the AC Adapter. For extended storage, remove the battery completely.

Battery Removal

To remove the battery, slide the Battery Latch then slide the battery out.

CAUTION: Removing the battery can cause the loss of content not saved in the Persistent Storage folder. Before removing the battery, we strongly recommend that you:

- Drag any changed files that you want to protect to the **V212/V212x**'s Persistent Storage folder (under My Computer), then press the Power button (to enter Suspend Mode) before removing the old battery. Or,
- Plug the AC Adapter into the **V212/V212x** before removing the old battery to prevent a disruptive interruption of power. Or,
- Press the Power button to put the **V212/V212x** in Suspend Mode, remove the old battery, and insert the replacement battery quickly. The *backup battery* (permanently installed) will prevent an interruption of power, providing a maximum of five (5) minutes of power while in Suspend Mode.

BATTERY POWER STATUS

The Power Level Icon

To determine the Main battery's current charge level, double-tap the Power icon in the Control Panel window under My Computer. The Power Properties window will open to Battery Status.

Battery Status displays the percentage of power left in your Main battery. The Status section also rates the quality of your External power connection and Backup battery as either Good, Low, or Very Low.

The Power Status LED

The Power Status LED at the upper right corner of the **V212/V212x** also displays useful information in the battery's current status and charge level.

In normal battery powered operation:

- Off - the device is powered off
- Solid Green - power level OK
- Solid Yellow - power level low
- Blinking Yellow - power level critically low

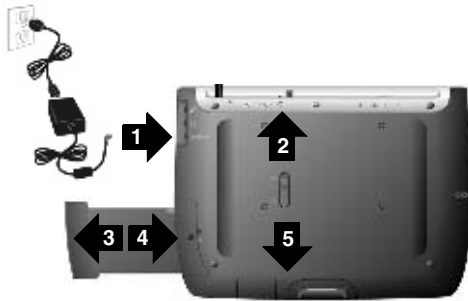
When using the AC Power Adapter:

- Solid Green - AC powered, battery charged
- Blinking Green - AC powered, battery charging

When using the optional docking station (described later in the manual):

- Solid Green - AC powered, battery charged
- Blinking Green - AC powered, battery charging

CHANGING THE BATTERY - WITH AN AC POWER SOURCE



IMPORTANT! If the replacement battery is not fully charged, be sure to keep the power cable connected until the Power LED is Solid Green. If the unit is in Off Mode, this will take three (3) to four (4) hours, and will take

1. Attach the AC Power Adapter to protect changed files from power outage.
2. Slide the Battery Latch upward into the unlocked position.
3. Slide out the old battery.
4. Slide in the replacement battery.
5. Slide the Battery Latch into the locked position.

Figure 7: Battery Removal and Insertion

CHANGING THE BATTERY - WITHOUT AN AC POWER SOURCE

In order to swap batteries without losing your stored content, follow this procedure. If you do not have access to an AC Power source and/or if you do not currently have the AC Power Adapter, do the following:

IMPORTANT! The replacement battery should be fully charged.



1. Press the Power button to put the unit in Suspend Mode (not shown in illustration).
2. Slide the Battery Latch upward into the unlock position.
3. Slide out the old battery.
4. Slide in the fully charged replacement battery.
5. Slide the Battery Latch into the locked position.

ANTENNA SIGNAL PROPERTIES

Your **V212/V212x** can use a wireless radio signal standard called Wi-Fi (802.11b/g) to communicate with a local Wi-Fi network connected to a network. The quality of your radio connection signal can be weakened by excessive distance and by intervening materials such as walls and furnishings. If the wireless connection seems to work intermittently, check the quality of your wireless connection.


WIRELESS CONNECTION SIGNAL STATUS

The Antenna Status LED

The Antenna Status LED at the upper left corner of the **V212/V212x** also displays useful information on the wireless signal connection:

- Off - no signal, no connection
- Solid Green - good signal level
- Solid Yellow - poor signal level
- Blinking Yellow - very poor signal level

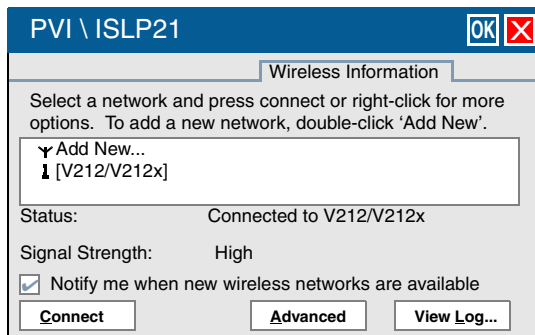
CONNECTION INFORMATION

Accessed from the Task Bar by double-tapping the Nethood icon . The PCINSLP21 information window opens displaying three tabs:

IP Information Tab - Displays current IP settings

IPv6 Information Tab - Displays additional current settings

Wireless Information Tab - Automatic IP address assignment



The Wireless Information tab window lists all Wi-Fi networks available to the **V212/V212x**, allowing you to choose a connection. It also allows you to alter and control connections to available networks:

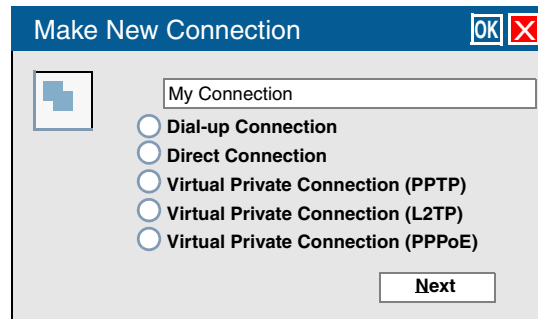
- **Add New** - opens the Wireless Network Properties window allowing you to set up a new network and provides settings for network name, encryption type, and authentication options.
- **Advanced** - Allows you to set a hierarchy of connections in order of preference. Should one connection become unavailable, the device automatically cycles down the list to the next connection on the list.
- **View Log** - opens the Wireless Network Log window which displays the success or failure of the most recent made attempts to connect to available networks.

NOTE: *If you are not thoroughly familiar with network types, you should avoid making changes to your Advanced settings without first seeking assistance from your IT Administrator.*

NETWORK SETTINGS

MAKE NEW CONNECTION SETTINGS

Accessed by from Start on the Task Bar by selecting Settings, Control Panel, then Network and Dial-up Connections. This panel allows you to add, name, and configure five types of connection options to your **V212/V212x**:

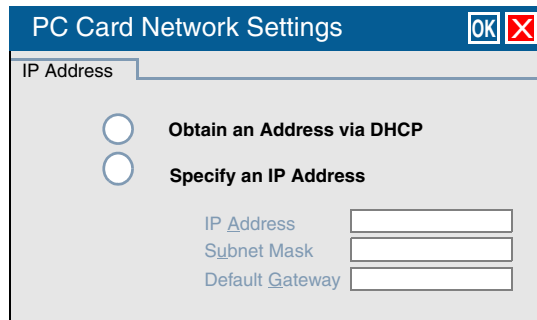


- Dial-up Connection - through modem (not currently supported)
- Direct Connection - through cable
- Virtual Private Network (PPTP) - through host or IP address
- Virtual Private Network (L2TP) - through host or IP address
- Virtual Private Network (PPPoE) - through host or IP address
- Each connection type has options for Security and TCP/IP settings accessed by tapping the Next button. The Dial-up and Direct connections have additional options for the configuration of port settings and connection preferences.

PCI-ISLP21 SETTINGS

Accessed from Start on the Task Bar by selecting Settings, Control Panel, then Network and Dial-up Connections. This panel allows you to assign IP server address and Domain Name server address for your **V212/V212x**.

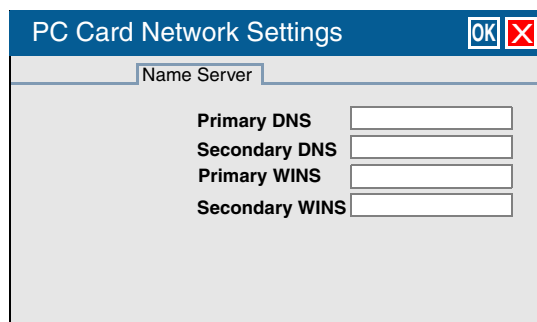
ISP Address Tab - Allows you to chose between an automatically set IP address (DHCP) or a specified IP (user filled-in) address.



The screenshot shows the 'PC Card Network Settings' dialog box with the 'IP Address' tab selected. It features two radio buttons: 'Obtain an Address via DHCP' (which is selected) and 'Specify an IP Address'. Below these are three input fields labeled 'IP Address', 'Subnet Mask', and 'Default Gateway'.

- Obtain an IP Address via DHCP - Prompts device to chose an automatically set IP address (DHCP) rather than a specified IP (user filled-in) address.
- Specify an IP Address - Prompts the device to select the DNS server address entered rather than relying on the network to automatically assign one.

Name (Domain) Servers Tab - DNS assignment, if DHCP is enabled



The screenshot shows the 'PC Card Network Settings' dialog box with the 'Name Server' tab selected. It contains four input fields: 'Primary DNS', 'Secondary DNS', 'Primary WINS', and 'Secondary WINS'.

- Primary/Secondary DNS - Allows you to enter DNS preferences.
- Primary/Secondary WINS - Allows you to enter WINS preferences.

NOTE: *If you are not thoroughly familiar with IP and DNS settings, you should avoid making changes here without first seeking assistance from your IT Administrator.*

RESETTING THE V212/V212x

SOFT RESET

Should your **V212/V212x** lock up or fail to respond to the stylus, it may be restarted without turning off the power.

1. Locate the reset button on the top of your **V212/V212x**.
2. Use the tip of your stylus to press the reset button to restart your **V212/V212x**.

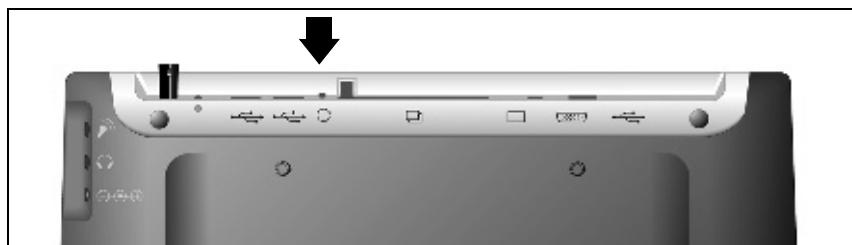


Figure 8: The Soft Reset Button

HARD RESET

A hard reset may be required on rare occasions where your **V212/V212x** completely locks up and the soft reset described above does not help.

You can perform a power interrupt type hard reset by detaching the both the battery and the AC power adapter while the device is On.

NOTE: *Soft or Hard resetting will cause you to loose all customization in DRAM (such as files, programs, and settings).*

As a precaution, we recommend that you drag any changed files that you want to protect to the **V212/V212x**'s Permanent Storage folder before removing the battery.

FIRMWARE IMAGE UPGRADE

From time to time ViewSonic may offer a firmware image upgrade. For current information visit our web site at **viewsonic.com** or check with your IT Administrator.

COMPACT FLASH (CF) CARDS

A CF card can extend the functionality of your **V212/V212x** by providing added features such as extra storage.

USING A CF CARD



1. Insert CF card carefully into the slot on the top side of the **V212/V212x** until it snaps into place.
2. Push the release button before removing.

CAUTION: Make sure the card is oriented correctly before inserting. Do not force the card in or out. It should be easy to insert or remove.

Figure 9: CF Card

OPTIONAL ACCESSORIES

THE DOCKING STATION

The optional **V212/V212x** Dock permits easy connectivity to an external mouse, a keyboard, and an AC power source. The dock offers a USB mini Type B port and two Type A USB ports.

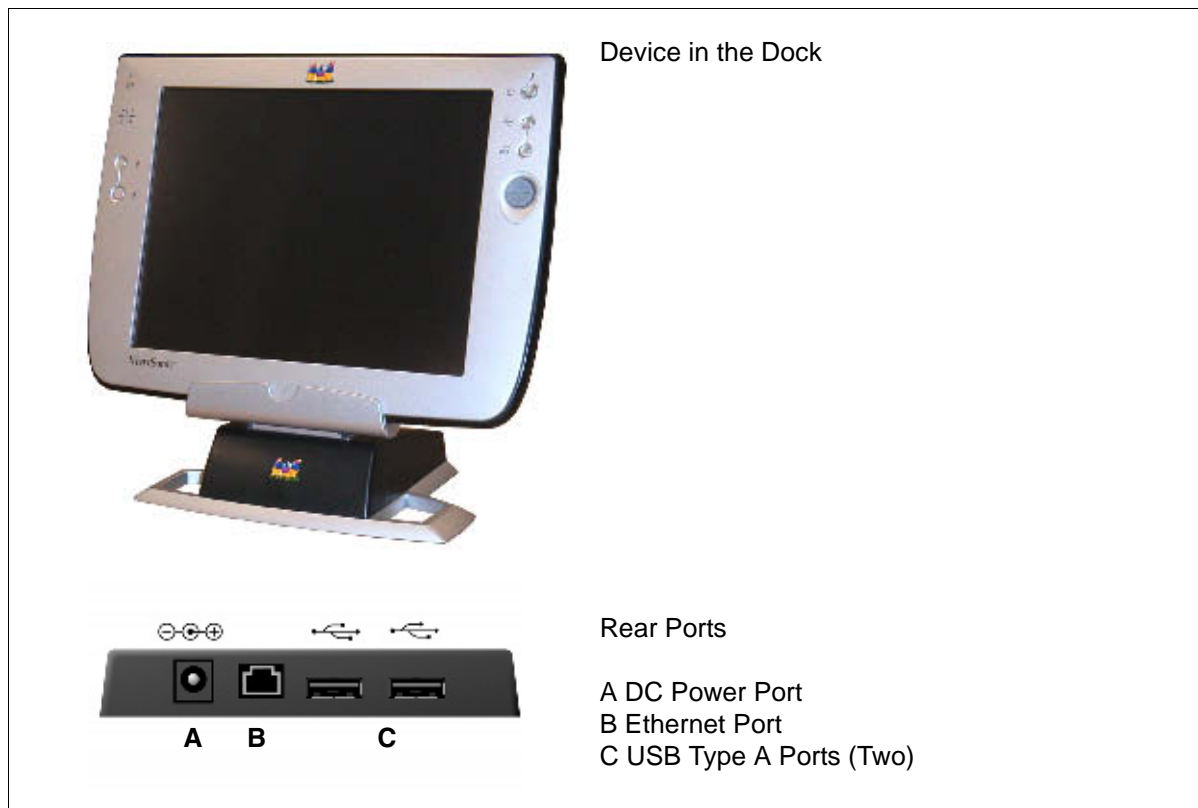


Figure 10: Dock and Ports

NOTE: When mounted in the Dock, the **V212/V212x**'s external USB ports become inactive.

COMMERCIALLY AVAILABLE ACCESSORIES

External USB Keyboard

You can attach a USB external keyboard using any one of the two USB ports on the top side of the **V212/V212x** as indicated by the arrow in the figure below (or by using the optional Dock shown previously).



Figure 11: The USB Keyboard/Mouse Ports

External USB Mouse

An optional external USB mouse can be connected to the keyboard or connected directly into any one of the **V212/V212x**'s two USB type-A ports.

External Headphone Set

You can enhance your audio experience and more fully enjoy music with an audio headset. Plug your headset into the Headset port on the back of the **V212/V212x**.

External Microphone

You can use an external microphone to improve the quality of your voice recordings. Plug your microphone into the Microphone port on the back of the **V212/V212x**.

NOTE: For an up-to-date list of commercially available compatible Modems and Card Readers, please visit <http://www.microsoft.com/windows/Embedded/ce.NET/evaluation/hardware/hcl.asp>.

APPENDIX

CLEANING & MAINTENANCE

- Make sure the **V212/V212x** is turned off.
- Never spray or pour any liquid directly onto the screen or case.
- Never immerse the **V212/V212x** in any liquid.

To clean the screen:

1. Wipe the screen with a clean, soft, lint-free cloth. This removes dust and other particles.
2. If still not clean, apply a small amount of non-ammonia, non-alcohol based glass cleaner onto a clean, soft, lint-free cloth, and wipe the screen.

DISCLAIMER

ViewSonic® does not recommend the use of any ammonia or alcohol-based cleaners on the **V212/V212x** screen or case. Some chemical cleaners have been reported to damage the screen and/or case of the **V212/V212x**. ViewSonic will not be liable for damage resulting from use of any ammonia or alcohol-based cleaners.

CUSTOMER SUPPORT

For the nearest ViewSonic® service provider, see the table below or contact your reseller.

You will need the product's serial number on-hand when you call.

Country/Region	Website (for email address also)	T = Telephone F = FAX
United States	viewsonic.com	T: (800) 688-6688 F: (909) 468-1202
Canada	viewsonic.com	T: (866) 463-4775 F: (909) 468-5814

COMPLIANCE & SAFETY NOTICES

Mercury warning

This product contains mercury. Dispose of in accordance to local, state and federal laws.

Power supply safety notice

The power supply provided with this device is for use with this device only. Replace only with the same or equivalent type power supply as recommended by the manufacturer.

Radio frequency interference (RFI) compliance

United States compliance notice:

This equipment has been tested and found to comply with the limits for a Class B digital device, pursuant to Part 15 of the Federal Communications Commission (FCC) Rules. These limits are designed to provide reasonable protection against harmful interference in a residential installation. This equipment generates, uses, and can radiate radio frequency energy and, if not installed and used in accordance with the instructions, may cause harmful interference to radio communications. However, there is no guarantee that interference will not occur in a particular installation. If this equipment does cause harmful interference to radio or television reception, which can be determined by turning the equipment off and on, the user is encouraged to try to correct the interference by one or more of the following measures:

- Reorient or relocate the receiving antenna.
- Increase the separation (distance) between the equipment and the receiver.
- Connect the equipment into an outlet on a different circuit than what the receiver is connected to.
- Consult the dealer or an experienced radio or television technician for help.

CAUTION: The Part 15 radio device operates on a non-interference basis with other devices operating at its frequency. Any changes or modification to said product not expressly approved could void the user's authority to operate this device.

FCC CAUTION: Any changes or modifications not expressly approved by the party responsible for compliance could void the user's authority to operate this equipment.

This device complies with Part 15 of the FCC Rules. Operation is subject to the following two conditions: (1) This device may not cause harmful interference, and (2) this device must accept any interference received, including interference that may cause undesired operation.

The antenna(s) used for this transmitter must not be co-located or operating in conjunction with any other antenna or transmitter.

IMPORTANT NOTE: FCC Radiation Exposure Statement:

This equipment complies with FCC radiation exposure limits set forth for an uncontrolled environment. This equipment should be installed and operated with a minimum distance of **2.5cm** between the equipment and your body.

Proper operation of this radio according to the instructions found in this user's guide will result in user exposure that is substantially below the FCC recommended limits.

- Do not touch or move antenna while the unit is transmitting or receiving.
- Do not hold any component containing the radio such that the antenna is very close or touching any exposed parts of the body, especially the face or eyes, while transmitting.
- Do not operate a portable transmitter near unshielded blasting caps or in an explosive environment unless it is a type especially qualified for such use.
- Do not operate the radio or attempt to transmit data unless the antenna is connected: if not, the radio may be damaged.

WARNING FOR LAPTOP USERS: In order to comply with the FCC RF exposure limits, it is recommended, when using a laptop with a wireless Ethernet adapter, that the adapter's integrated antenna should not be positioned closer than 2 inches (5 cm) from the user. It is recommended that user exposure time be limited.

Canadian compliance notice:

English: This digital apparatus does not exceed the Canada ICES-003 Class B limits for radio noise emissions from digital apparatus as set out in the radio interference regulations of the Canadian Department of Communications.

French: Le present appareil numerique nemet pas de bruits radioelectriques depassant les limites applicables aux appareils numeriques de Canada ICES-003 Class B prescrites dans le reglement sur le brouillage radioelectrique edicte par le Ministere des Communications du Canada.

European compliance notice

Products with the CE Marking comply with both the EMC Directive (89/336/EEC) and the Low Voltage Directive (73/23/EEC) issued by the Commission of the European Community. Compliance with these directives implies conformity to the following European Norms:

- EN55022 (CISPR 22) Radio Frequency Interference
- EN55024 (IEC61000-4-2, -4-4, -4-5, -4-6, -4-11)
- EN60950 (IEC950) Product Safety



RoHS compliance notice

This product is RoHS compliant.



Battery safety notice

- The battery pack is intended to be used only with this device.
- Do not disassemble the pack.
- Do not dispose of the battery pack in fire or water.
- To avoid risk of fire, burns, or damage to your battery pack, do not allow a metal object to touch the battery contacts.
- Handle a damaged or leaking battery with extreme care. If you come in contact with the electrolyte, wash the exposed area with soap and water. If it contacts the eye, flush the eye with water for 15 minutes and seek medical attention.
- Do not charge the battery pack if the ambient temperature exceeds 113 degrees Fahrenheit (45 degrees Celsius).
- To obtain a replacement battery, contact your local dealer.
- Do not expose the battery pack to high storage temperatures (above 140 degrees Fahrenheit, 60 degrees Celsius).
- When discarding a battery pack, contact your local waste disposal provider regarding local restrictions on the disposal or recycling of batteries.

Lithium battery notice

The **V38r** has two batteries: one is under the back cover which you can replace yourself but the other is inside the device itself. **DO NOT ATTEMPT TO REMOVE THE INTERNAL BATTERY** as this will void the warranty.

There is also danger of explosion if the device is not used, handled, or disposed of correctly, or if the batteries are replaced incorrectly. Replace batteries only with the same or equivalent type battery as recommended in the **Battery and Power properties** section of this guide. Discard used batteries according to the manufacturer's instructions or local laws.

Infrared LED safety notice

If this device contains an infrared networking or peripheral connection capability, or if one is added to the device, the following precautions are recommended:

- Do not attempt to view the infrared LED beam with any type of optical device.
- Do not attempt to make any adjustment of the unit.
- If the unit requires service, contact an authorized service center.
- Avoid direct eye exposure to the infrared LED beam. Be aware that the beam is invisible light that cannot be seen.

SPECIFICATIONS

Processor	Intel® 520 MHz X-Scale PXA27X
Memory	RAM: PC 133MHz SDRAM, 128MB Flash ROM: Intel Strata Flash 64 bit UDI
Display	10.4" TFT Active Matrix 6-bit LCD Color Display RGB Vertical Stripe, Anti-Glare Screen V212: 800 x 600 Video Resolution V212x: 1024 x 768 Video Resolution
Touch Screen	4-wire Resistive Touch Panel/12 bit A/D
Software Base	Microsoft® Windows® CE 5.0 (included)
Wireless Standard	IEEE802.11b/g (Wi-Fi) 2.400-2.4835 GHz, 11/13 channels USA-Canada/Europe Indoor: 50m (164')@11 Mbps, 80m (262')@5.5 Mbps Outdoor: 150m (491')@11 Mbps, 300m (984')@5.5 Mbps
Audio Support	Speaker: Mono 1 Watt 8 ohm 500Hz-16kHz+/- 6db Built-in Microphone: 100-4 kHz, +/-6db
Expansion CF Slot	1 Type II CF Card Slot, Hot Insertion/Removal
External Ports	2 Universal Serial Bus (USB) Type A Ports 1 Universal Serial Bus (USB) Mini Type B Port Microphone and Headphone Jacks 22-pin Docking Port Connector
IrDA	CIR
Battery	Rechargeable Lithium Ion 3S2P Up to 6 hours life (depending on use and configuration) 3900mAh (fast charging), 10.8 V (nominal voltage)
Backup Battery	7.2V 40mAh Ni-MH
AC/DC Power Adapter	100~240 VAC 50/60 Hz 19 VDC Output Voltage @ 2.64A
Environmental Envelope	Operation: 32° F - 104° (0° C - 40° C), 10% - 85% non-condensing humidity, 0 - 3,000 meters Storage: -4° F - 140° F (-20° C - 60° C), 10% - 85% non-condensing humidity, 0 - 12,000 meters
Weight	Net: 1.2 kg (2.64 lbs)
Dimensions	Physical: 292 mm x 213 mm x 25.4 mm (W x H x D) 11.5 in. x 8.4 in. x 1 in. (W x H x D) Package: 357 mm x 286 mm x 161 mm (W x H x D) 14.1 in. x 11.3 in. x 6.3 in. (W x H x D)
Standards Compliance	EMC & Safety: ETL/cETL, CE, FCC-15B RF Module: FCC-15C, RSS-210, RTTE Environmental: EPA-Energy Star

Package
Contents

In the Package:
Wireless Tablet Client V212/V212x
Quick Start Guide
V212/V212x Battery
AC/DC Power Adapter with Power Cord
Stylus (2) and Stylus Tether (1)
USB Mini-B to A Setup Cable (Blue)
V212/V212x CD (with the User Guide, USB Driver)

Basic Software Bundle:
Windows CE® 5.0
Internet Explorer
 Windows Explorer
 Media Player
 MS WordPad
 Solitaire
Citrix Client
Microsoft ActiveSync
Microsoft Inbox
Microsoft File Viewers
 MS Excel Viewer
 MS Image Viewer
 MS PDF Viewer
 MS PowerPoint Viewer
 MS Word Viewer

LIMITED WARRANTY

ViewSonic® Limited Warranty Terms and Conditions (Current Production Models. U.S.A. and Canada Only)

How the Viewsonic Standard Limited Warranty works:

ViewSonic Corporation (“ViewSonic”) warrants its products to be free from defects in material and workmanship during a specified length of time, or “Warranty Period”, as indicated below. If a product proves to be defective in material or workmanship during the Warranty Period, ViewSonic will, at its sole option, repair or replace the product with a similar product. Replacement products or parts may include remanufactured or refurbished parts or components. The replacement product will be covered by the balance of the time remaining on the customer's original ViewSonic Limited Warranty. This warranty does not cover any software included with the product.

ViewSonic products are manufactured using new materials or new and used materials equivalent to new in performance and reliability. Spare parts may be new or equivalent to new. Spare parts are warranted to be free from defects in material or workmanship for the remainder of the Limited Warranty Period under proper and/or normal use of the ViewSonic Product in which they are installed.

During the Limited Warranty Period, ViewSonic will, at its sole discretion, repair or replace the defective component parts or the ViewSonic product. All component parts or hardware products removed under this Limited Warranty become the property of ViewSonic. In the unlikely event that your ViewSonic Product has a recurring failure, ViewSonic will, at its sole discretion, provide you with a replacement unit of ViewSonic's choosing that is similar or equivalent to your ViewSonic originally purchased product in hardware and/or performance.

How long the warranty is effective:

ViewSonic warrants that its hardware will be free from defects in workmanship and materials, under proper normal use, and as set forth below:

- Hardware and Power Supplies: One (1) Year
- Accessories, spare parts, and spare kits: Ninety (90) days

The Warranty Period will begin on the date of purchase, and remain effective as specified above. Proof of purchase and/or receipt will be required for all claims purposes.

Exclusions of Warranty:

The following will immediately and automatically render any and all warranties and/or guarantees, including but not limited to the ViewSonic Limited Warranty, as void:

1. Any product on which the serial number has been defaced, modified or removed.
2. Accident, misuse, neglect, fire, water, lightning, or other acts of nature, unauthorized product modification, and/or failure to follow instructions as prescribed by ViewSonic.
3. Repair or attempted repair by someone other than a ViewSonic Licensed Technician.
4. Any damage resulting from shipments not made and/or insured by ViewSonic, and/or shipments made by ViewSonic for which recipient failed to notify ViewSonic of the damage claim within 48 hours upon receipt.
5. Removal and/or installation of any components not intended or prescribed by ViewSonic.
6. Causes external to the product, such as electric power fluctuations and/or failure.
7. Normal wear and tear.
8. Damage to, or abuse of, the coating on the surface of the display, including but not limited to cosmetic defects that do not affect functionality.

9. Any other cause which is not related to a manufacturer's defect.
10. Loss of, or damage to, the covered product due to mishandling, improper packaging by you, alteration, accident, electrical current fluctuations or failure to follow operating, maintenance or environmental instructions prescribed in the covered product's User Manual. In the event that ViewSonic determines, in its sole discretion, that the return product is damaged due to one or more of these excluded causes, the customer will be billed for the cost of repairs.
11. ViewSonic will not be responsible for any damage to, loss of, or consequential loss from the inability to use, any programs, data or other information stored on any media or any part of any Product serviced hereunder. ViewSonic makes no representations or warranties whatsoever to keep confidential or secure any data stored on any media or any part of any Product serviced hereunder. ViewSonic will not be responsible for and hereby disclaims any and all liability for damage or loss to software, data, Programs, removable media, consumables, portable docking stations, carrying cases, or non-ViewSonic-branded products such as joysticks, printers, and/or scanners, that may occur as a result of repairs to, and/or by the replacement of any defective product. In order to avoid any and such losses or damages, please make a back-up of any and/or all data(s) and Programs before returning your product to ViewSonic for replacement and/or repair(s).
12. Image burn-in and/or defective pixels/sub-pixels are not considered a manufacturer's defect. For a complete review of the details regarding the industry standard methodology ViewSonic uses to determine defective pixels/sub-pixels please visit our on-line Customer Support database at <http://www.viewsonic.com/support/qa.cfm?topic=lcd&question=01>.

Limitation of Implied Warranties

THERE ARE NO WARRANTIES, EXPRESS OR IMPLIED, WHICH EXTEND BEYOND THE DESCRIPTION CONTAINED HEREIN INCLUDING THE IMPLIED WARRANTY OF MERCHANTABILITY AND FITNESS FOR A PARTICULAR PURPOSE.

Limitations of Liability:

VIEWSONIC'S LIABILITY IS LIMITED TO THE COST OF REPAIR OR REPLACEMENT OF THE PRODUCT. VIEWSONIC EXPRESSLY DISCLAIMS ANY AND ALL LIABILITY FOR DELAYS IN SHIPPING AND/OR ANY RESULTING DAMAGE(S) DUE TO LOSS OF USE FOR ANY AND ALL REASONS. IN NO EVENT WILL VIEWSONIC CORPORATION, AND ANY AND ALL OF ITS PRESENT, FORMER AND FUTURE REPRESENTATIVES BE LIABLE FOR SPECIAL INDIRECT, INCIDENTAL OR CONSEQUENTIAL DAMAGES RELATING DIRECTLY OR INDIRECTLY TO THIS AGREEMENT. FURTHER, VIEWSONIC WILL NOT BE LIABLE FOR LOSS OF THE USE OF PRODUCT, LOSS OF DATA, LOSS OF TIME, LOSS OF PROFITS, LOSS OF BUSINESS OPPORTUNITY, LOSS OF GOODWILL, INTERFERENCE WITH BUSINESS RELATIONSHIPS OR OTHER COMMERCIAL LOSS, REGARDLESS OF WHETHER ADVISE VIEWSONIC IS ADVISED OF OR SHOULD HAVE KNOWN ABOUT THE POSSIBILITY OF SUCH DAMAGES.

How to get service:

1. For information on obtaining warranty service, call your ViewSonic dealer/reseller.
2. To obtain warranty service, please contact ViewSonic Customer Support for a Return Authorization number (RMA). You will be required to provide
 - A. A copy of the dated sales slip.
 - B. Your name.
 - C. Your address.
 - D. The serial number of the product.
 - E. A description of the problem.
 - F. Mobile and wireless products, customer should provide the user name and the password or disable password protections in order to allow ViewSonic access to the device for the performance of warranty service.

3. Bring or ship the product prepaid in the original container, with the associated accessories, to ViewSonic or any ViewSonic authorized service center.
4. For additional information or the name of the nearest ViewSonic service center, contact your ViewSonic dealer/reseller or ViewSonic.

NOTE: ViewSonic is not responsible for any returned product without an assigned RMA.

Sales outside the U.S.A. and Canada:

For ViewSonic products sold outside the U.S. and Canada, contact your ViewSonic dealer/reseller

Effect of state law:

This warranty gives you specific legal rights, and you may also have other rights which vary from state to state. Some states do not allow limitations on implied warranties and/or do not allow the exclusion of incidental or consequential damages, so the above limitations and exclusions may not apply to you.

4.19: ASET Generic Limited Warranty, v. 1a

Release Date: 05-01-06

ViewSonic[®]  [®]
the choice of professionals