

**CP1 USER MANUAL**

# **Cloud Camera**

## **(HD Cloud Camera)**

---

### **User Manual**



### **MODEL: CP1**

Note: To protect your privacy, please change the initial password after login.  
Please keep your user name and password safely.

# CP1 USER MANUAL

## Contents

1. Introduction.....	1
2. Installation.....	1
2.1. Camera installation and Login.....	1
2.2. Wireless Installation Considerations.....	4
3. Homepage .....	5
3.2 Camera status .....	9
3.3 Account settings.....	10
3.4 Image settings and PTZ control .....	11
3.5 Mode selections .....	12
3.6 Button page .....	12
4. Information .....	15
4.1 Alarm Information Checking.....	15
5. Management.....	16
5.1 About.....	16
5.2 Nickname .....	17
5.3 Admin Password .....	17
5.4 Guest Password.....	18
5.5 Network.....	19
5.6 OSD.....	22
5.7 SD card: .....	23
5.8 Camera alarm arming settings: .....	25
5.9 Scheduled recording: .....	26
5.10 Date / Time: .....	27
5.11 System:.....	28
5.12 Other: .....	30
6. Troubleshooting .....	31
7. Wireless Infrastructure.....	38
8. Wireless Security .....	39
9. Specifications .....	42

# 1. Introduction

Thanks for buying our products. Cloud IP camera has a variety of functions, which dedicates to the office and home solutions. Unlike traditional IP Camera, cloud camera uses P2P technology, plug and play (no need to do port forwarding, DNS, or IP address setting). By using WIFI remote monitoring , Cloud Camera realizes real-time control at any where and any time. 720P HD makes image clear and smooth. Cloud IP camera also has motion detection function, making it cost-effective for home and public places security.

This manual is only for reference, any update please open [www.vimtag.com](http://www.vimtag.com) to download newest manual version.

# 2. Installation

## 2.1. Camera installation and Login

### Step 1: Connect power and network

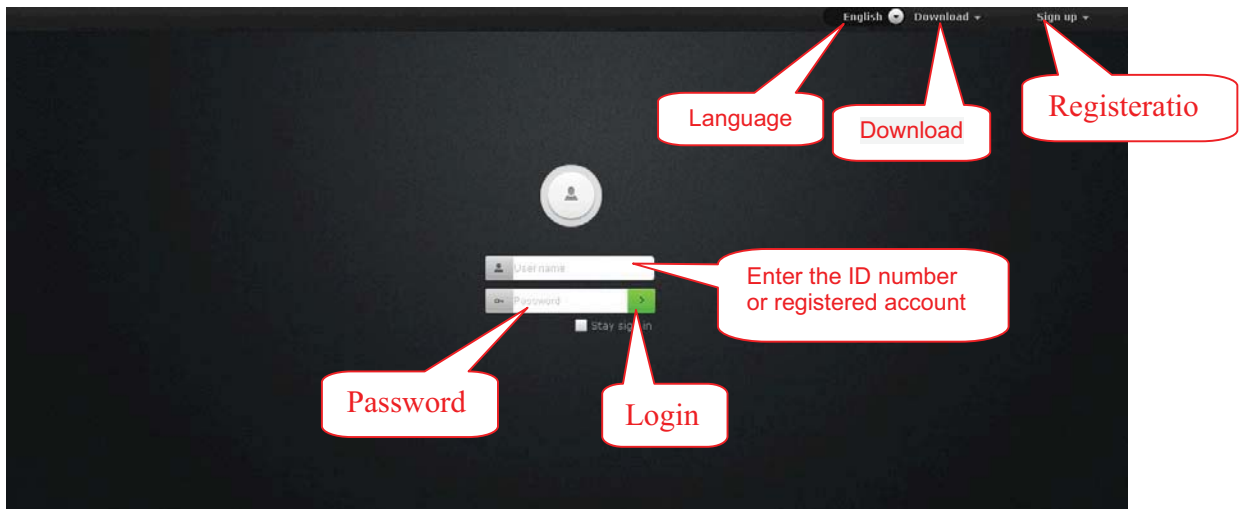
Please refer to "Quick Installation Guide" for installation

### Step two: Login

1: Open [www.vimtag.com](http://www.vimtag.com) on browser, and put in camera ID and password (each IPCAM have a unique ID number and password).

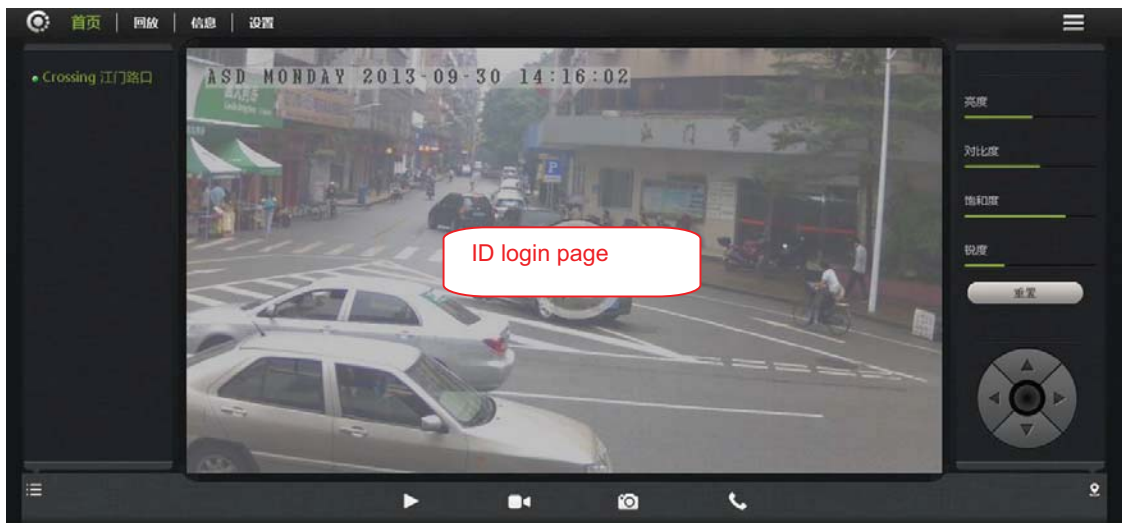
**Note: To protect your privacy, please change the initial password after first time login.**

# CP1 USER MANUAL

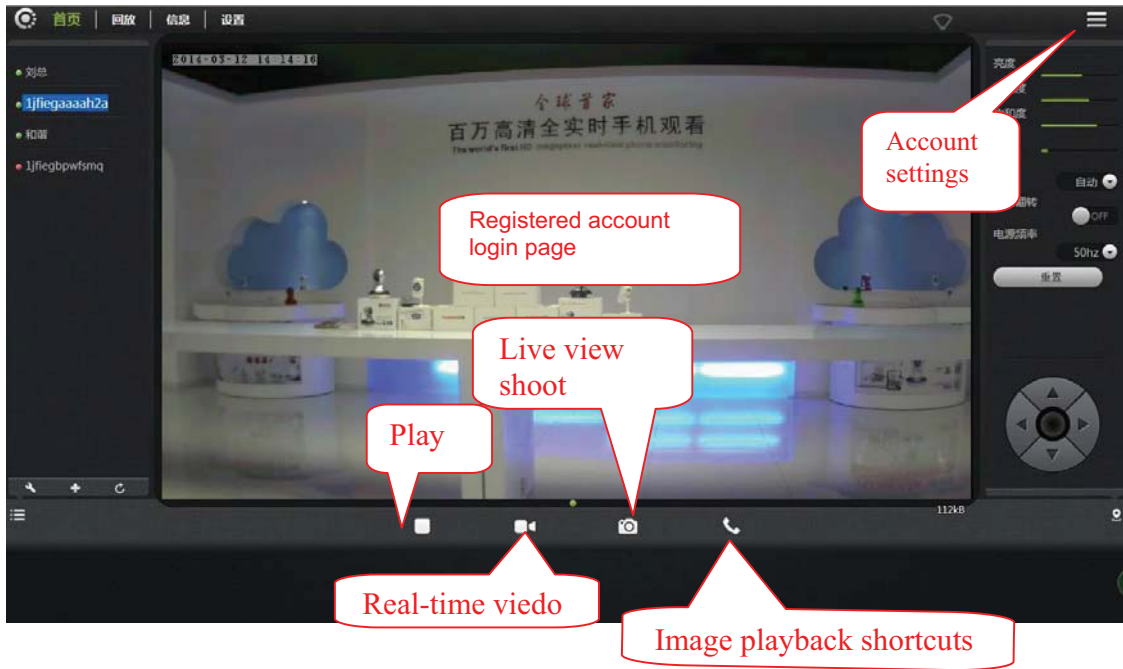


Note: The user can click on the login screen of the "Register" button to register a user account, login to add / manage multiple cameras.

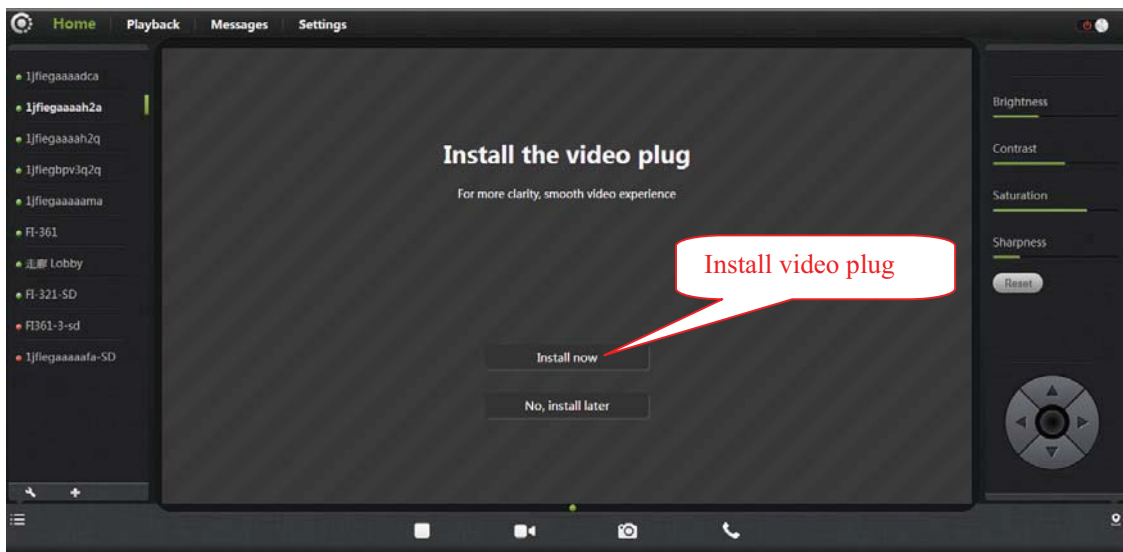
2: On the video viewing screen.



# CP1 USER MANUAL



3: Install the plug-in:



Note: If the image blurs when you watch, probably run the focal during transportations or human factors of the camera lens, the focal length of the lens caused by out of focus, the user can put the camera on the 3 meters for

## CP1 USER MANUAL

reference, swing the camera lens back and forth a few times till the image in best performance.

### 2.2. Wireless Installation Considerations

Wireless Camera promises you in the wireless network coverage area to use wireless connection to access the network. However, the wireless signals need to pass through walls, ceilings and other objects, thickness and location of limits Wi-Fi range. The network ranges depending on your room or office types of materials and radio frequency noise. Please follow these basic guidelines to maximize wireless range:

1. Make sure the walls, ceilings between routers and your IP Cameras have as fewer as you can, - each wall or ceiling can weaken adapter 3-90 feet (1-30 meters) of the wireless transmission range.
2. Please pay attention to the straight-line distance between the devices. 1.5 feet thick (0.5 meters) of the wall at a 45degree appears to be almost 3 feet (1 meter) thick. When turning to the 2degree, the thickness of the wall will reach 42 feet (14 meters). Put the machine straight through a wall or ceiling (instead of at an angle) for better reception.
3. Building Materials make a difference. Metal door or aluminum studs may weaken the wireless signal. The access points, wireless routers and other networking devices where the signal passes through drywall or not open

## **CP1 USER MANUAL**

doorways. Materials and objects such as glass, steel, metal, band insulator, water (fish tanks), mirrors, file cabinets, brick, and concrete will degrade your wireless signal.

4. Keep your product away from the electronic devices that generate RF noise and appliances at least 3-6 feet or 1-2 meters from the outside position.

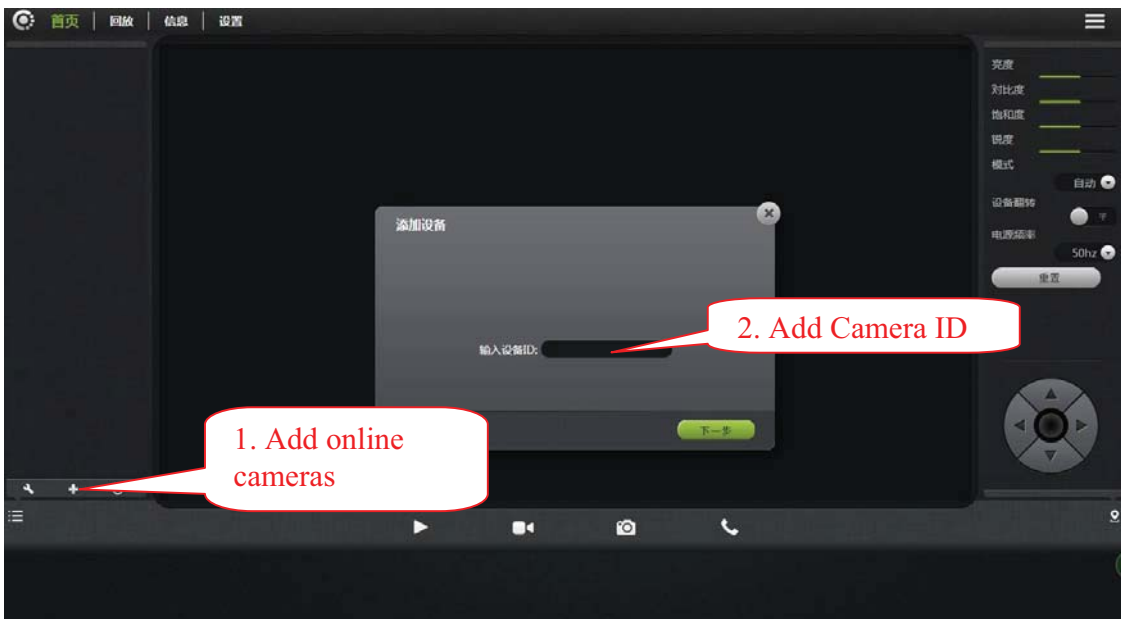
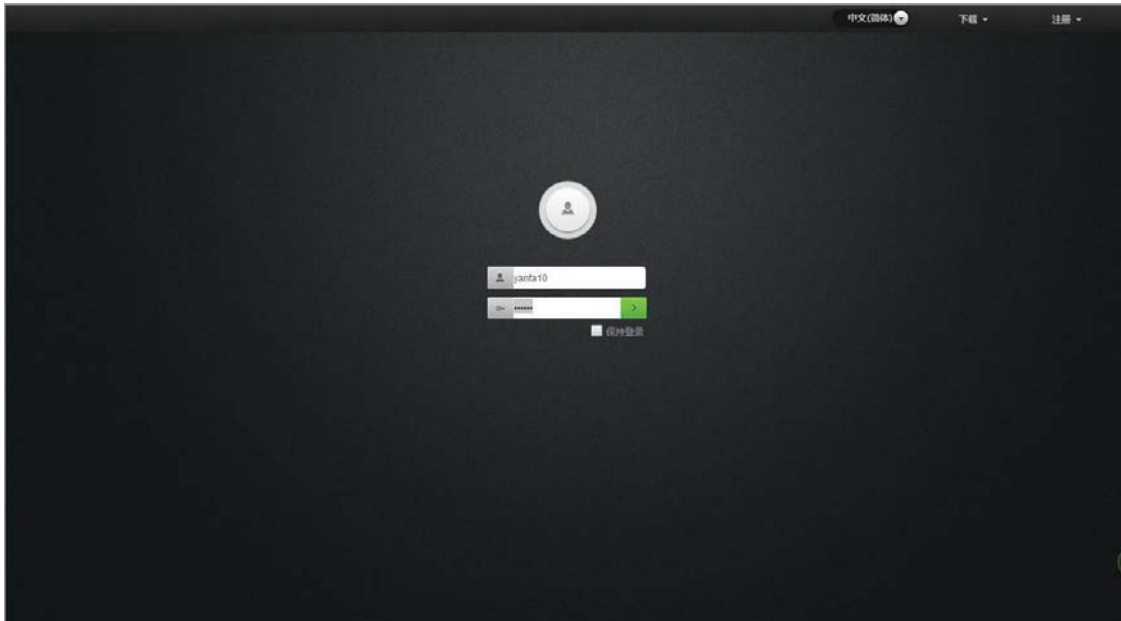
5. If you are using 2.4GHz cordless phones or other radio transmitting source devices (such as microwave ovens), your wireless connection may degrade dramatically or drop completely. Make sure your 2.4GHz phone base is as far away from wireless devices. Even if the phone is not in use, the base will still transmit signals.

## **3. Homepage**

### **3.1 Add Camera Wizard**

After registered users login, the user can add, delete and manage multiple cloud cameras.

# CP1 USER MANUAL





# CP1 USER MANUAL



## CP1 USER MANUAL



Attention: 1. the 4th step is based on the Cam's initial password, if the initial password is not "admin", this step can be cancelled.

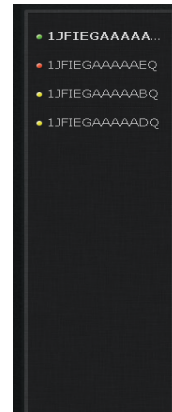
## CP1 USER MANUAL

2. The 5th step, after choosing Wi-Fi and enter password, when applying, please check the STATE1 (📶) light flashing status. Before pulling the cable please make sure the STATE1 (📶) flash 3 times for every 3 seconds.

### 3.2 Camera status

1. You can see the online status of every camera you added, which can be divided into 3 statuses.

- Green color indicates that your camera is online.
- Yellow color means the camera online; however, password has been changed. You need to enter the new password to access the camera.
- Red indicates the camera is offline and not able to access remotely.




If the camera is offline, please try the following methods:

- Make sure the camera's network connection is normal.
- Try to restart your network router.
- Please check the camera's cable connections to ensure they are connected.
- Make sure the camera STATE2 (📶) the green light flashes every 3 times every 3 seconds.

If you still can not access your camera, please restart the camera or press the RESET shortly backing to the factory settings.

## CP1 USER MANUAL

2. : Add or delete online cameras.

3. : Show or hide the status bar.

### 3.3 Account settings



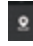


1. **Set video size:** User can choose the resolution of the images.
2. **Password:** User can modify the admin account (The visitors login the account by administrator password can modify the information of the account).
3. **Guest Password:** The visitors who login the account by guest password can only watch and rotating screen, which can't modify the information of the account.
4. **Exit:** Exit Video Interface.

# CP1 USER MANUAL

## 3.4 Image settings and PTZ control



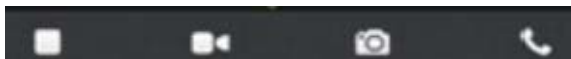
1. Brightness / Contrast / Saturation / Sharpness: video images can adjust the parameters of the corresponding  
(Such as the right to adjust these parameters will result in poor image quality display we may not recommend users adjust of these parameters).
2. : Click "Reset", you can restore brightness / contrast / saturation / sharpness back to the factory settings.
3. : IP CAM can control PTZ up / down / left / right rotation.
4. : Display and hide the status bar icons.
5. Machine Turnover: When the machine is hosting, the picture is turnover, when choosing Machine Turnover, the picture will turn back.
6. Supply frequency: Please choose the right Supply frequency based on the local area. (China rated frequency is 50Hz).




## 3.5 Mode selections



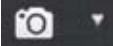

1. Automatically: Infrared lamp's on and off is based on the environment around the photosensitive sensor.
2. Daytime: IP camera is switch into daytime mode, infrared lamp is off.
3. Night: IP camera is switch into night mode, infrared lamp is on.

## 3.6 Button page



1.  Video Play / Stop: Click buttons to play or stop the video.
2.  Temporary manual recording button (the file recorded to micro SD card):  
Click the buttons on the audio / video recording, recording icon indicates .NOTE: This video button function applies only to temporary manually recording.

## CP1 USER MANUAL

3.  **Snapshot button:** Click the button for playing video capture pictures.
4.  **Voice intercom:** Click buttons, camera and computer microphone / speakers are turned on; the two sides' voices can be heard.

### 3.7. Playback

Micro SD card stores the video files.



1. Select the camera in the camera list.
2. In the image on the right can find more information. Video files and file details.

# CP1 USER MANUAL





## 4. Information

### 4.1 Alarm Information Checking



## 5. Management

This section shows the configuration of the IP Cam.

### 5.1 About

Basic information about the camera is displayed.



**Model:** The camera version number.

**Software Version:** Camera current software version number.

**Plug-in version:** watch current video cameras plug-in version number.

**Device ID:** camera ID.

# CP1 USER MANUAL

## 5.2 Nickname

Modify the current camera name.



**Nickname:** User can modify the name of the camera.

## 5.3 Admin Password



## CP1 USER MANUAL

**Admin Password:** Enter the current login password (default password is admin).

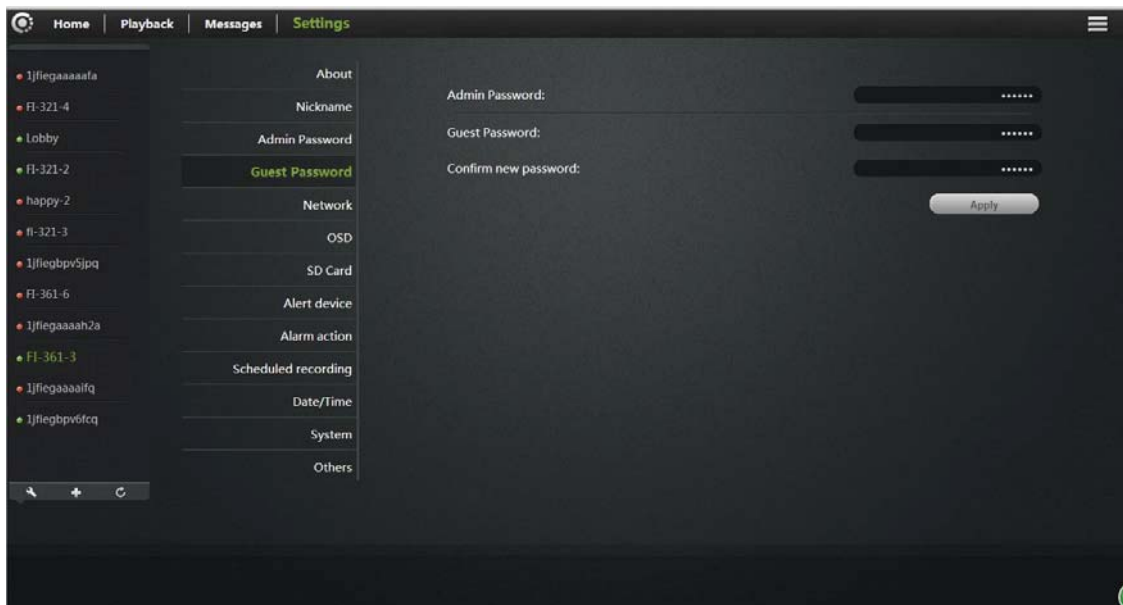
**New Password:** Enter the new admin password.

(To protect your privacy, please change the initial password after logging. Please keep the user name and password.)

**New Password confirmation:** Re-enter the current camera modified login password.

Click "Apply" to save your changes.

### 5.4 Guest Password



**Admin Password:** Enter the administrator password of the current camera.

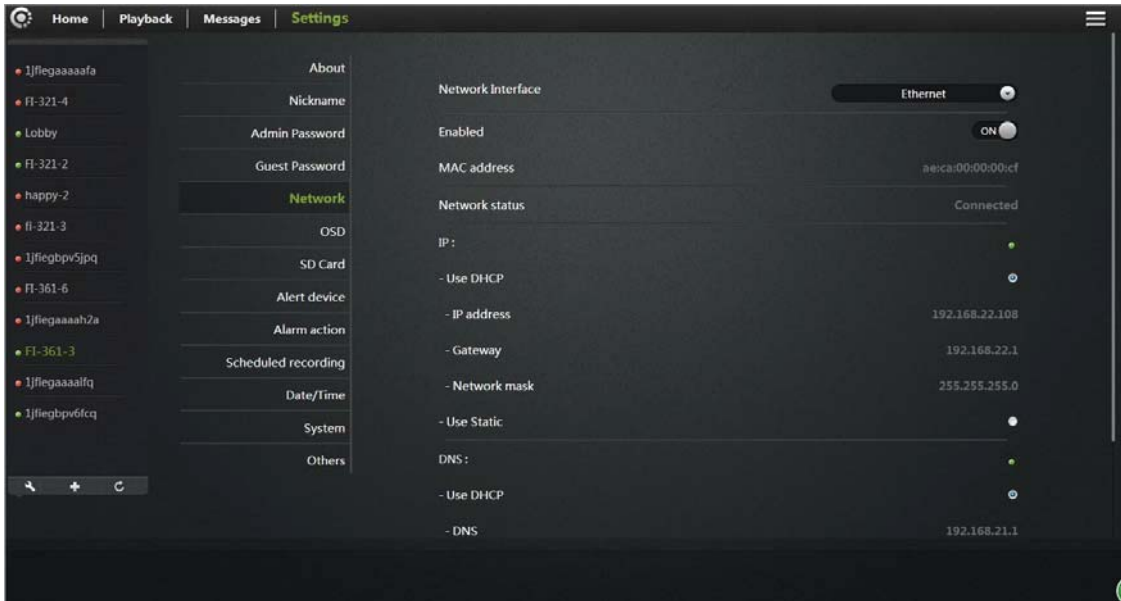
**Guest Password:** Enter guest password (Default password is admin).

**New Password Confirmation:** Re-enter the new guest password again.

Click "Apply" to save your changes.

# CP1 USER MANUAL

## 5.5 Network



NIC: Ethernet (wired) or wireless networks.

### 1. Ethernet:

Effective when connected to a wired network.

**Start Status:** The current Ethernet situation is enable or disable.

**Mac Address:** The current Ethernet Mac address.

**Automatically obtain an IP address (cameras default):** When selected, the camera

Automatically get to the router connected to it is automatically assigned to

Its associated IP address / gateway / subnet mask information.



## CP1 USER MANUAL

**Obtain DNS Service Address automatically:** After clicking, IP Cam will automatically obtain DNS by router.

**By using DNS server address underneath:** After clicking, the camera will manually access with DNS connected to the Cam (user may not need to set it).

## 2. Wireless Network: (wireless network configuration)

Select the wireless network card after.

**Wireless Mode:** Hot / Terminal

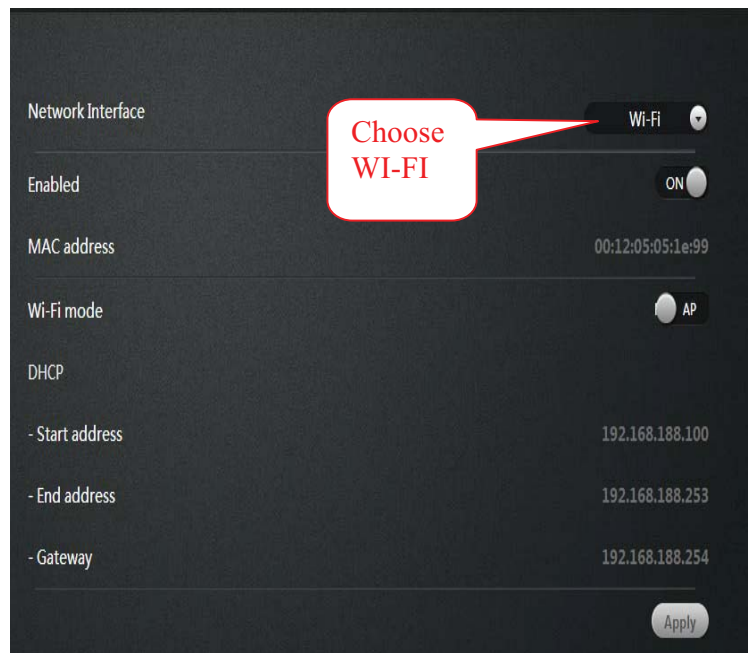
**A. Hot spots:** As a searching device, the default mode is wireless hot spot. By using PC or iPhone can search the hot spot, IP cam hot spot is realize as ID number. For example:

ipc1jfiiegaaaah2a.

By connected with hot spot can realize the WIFI P2P connections.

**A. Terminal:** As an searched devices, can realize network

Camera connected with WIFI router.



# CP1 USER MANUAL

Note:

After setting up WIFI

click Applications,, WIFI

Surface does not

immediately refresh the

page information, the

user wants to quit

"Network", and then enter, you can see no

Line connection

status display: After a

successful connection,

IP

Address and gateway

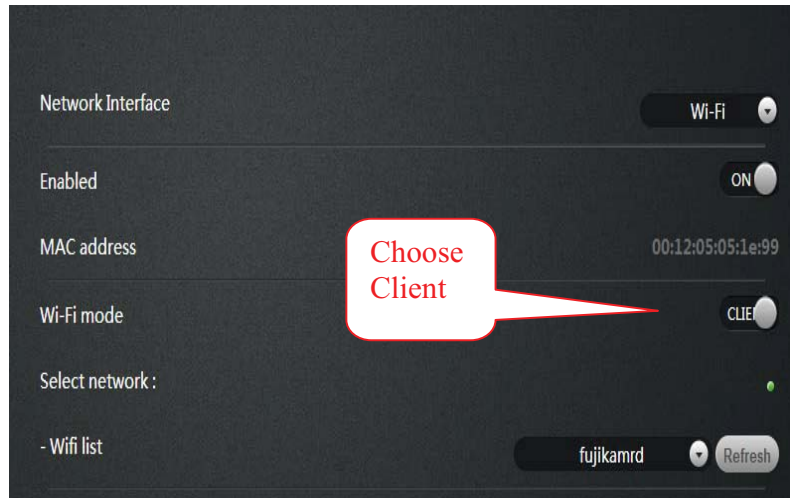
information will get to.

Meanwhile

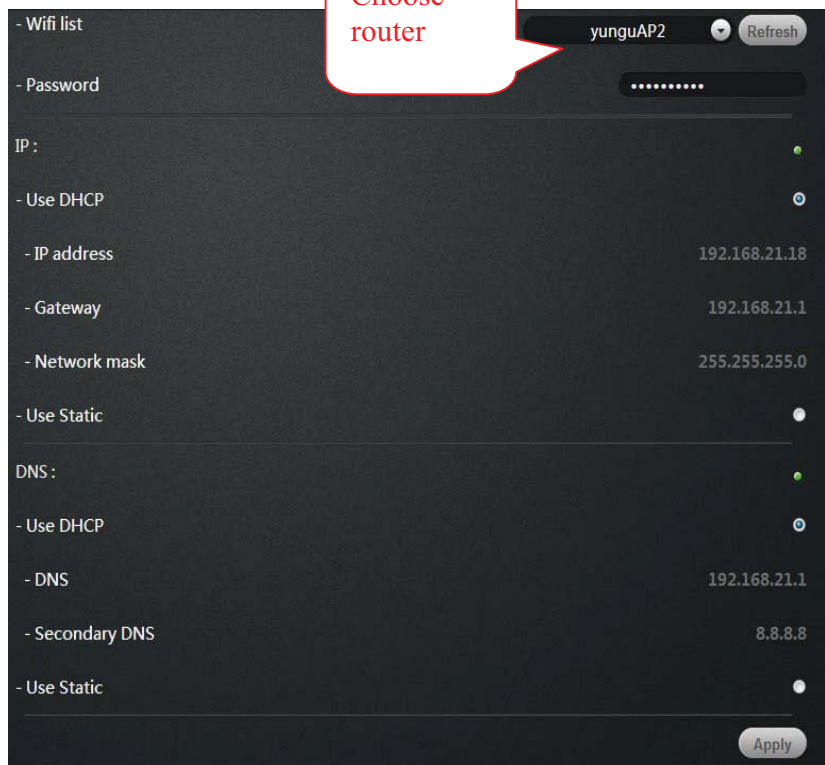
STATE1  flashes

green 3 times every 3

seconds.



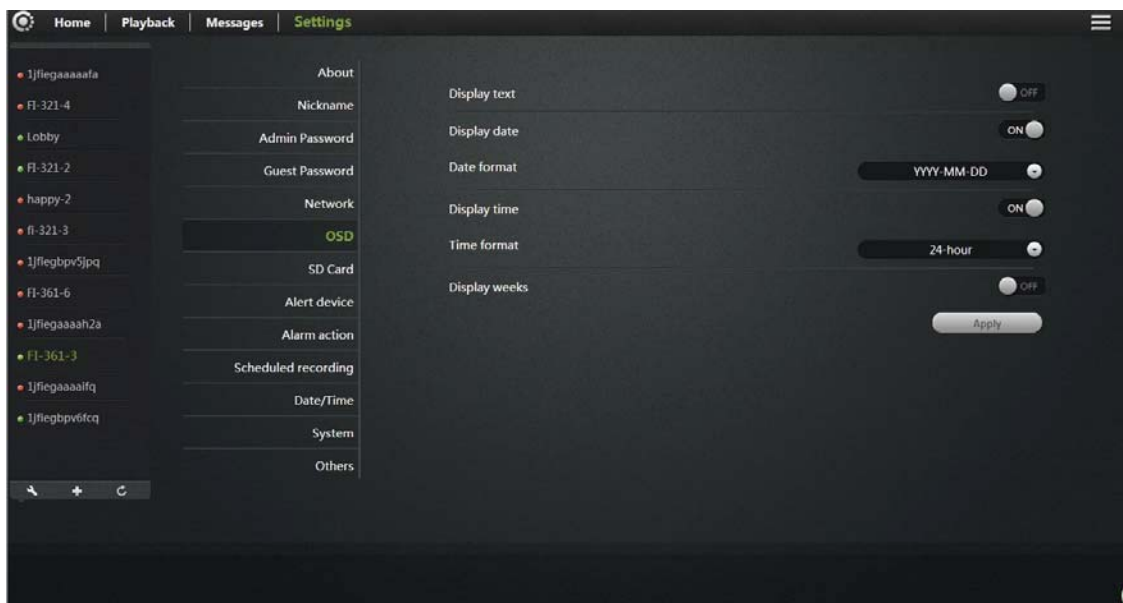
Choose router



# CP1 USER MANUAL

## 5.6 OSD

### Menu settings





## **CP1 USER MANUAL**

**Display text:** After tickled, the upper left corner of the screen will display the name of the camera. The user can modify the display name of the camera (Can not have Chinese or symbols, only English and numbers).

**Display date:** After tickled, upper left corner of the screen will display the date.

**Date format:** The user can select Year / Month / Day or Month / Day / Year two date formats.

**Display time:** After tickled, the screen will display the time.

**Time format:** User selectable for 24-hour or 12-hour format clock.

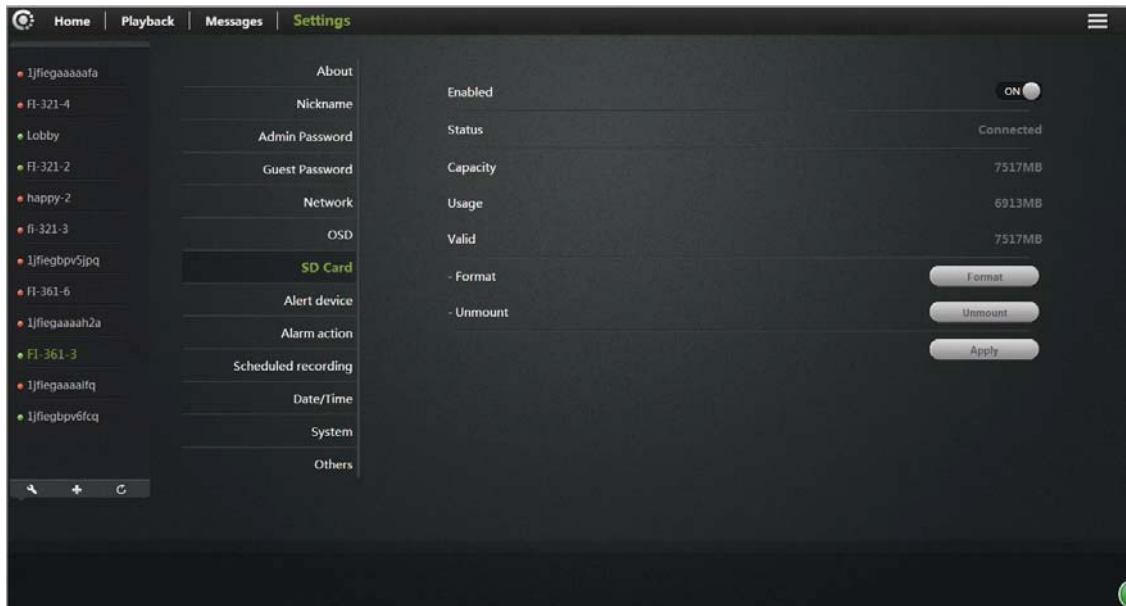
**Display week:** After tickled, the screen will display weeks.

Click "Apply" to save your changes.

### **5.7 SD card:**

Display Camera SD card status.

# CP1 USER MANUAL



**Format:** The Micro SD (T-FLASH) card is formatted; the existing micro SD card contents will be cleared.

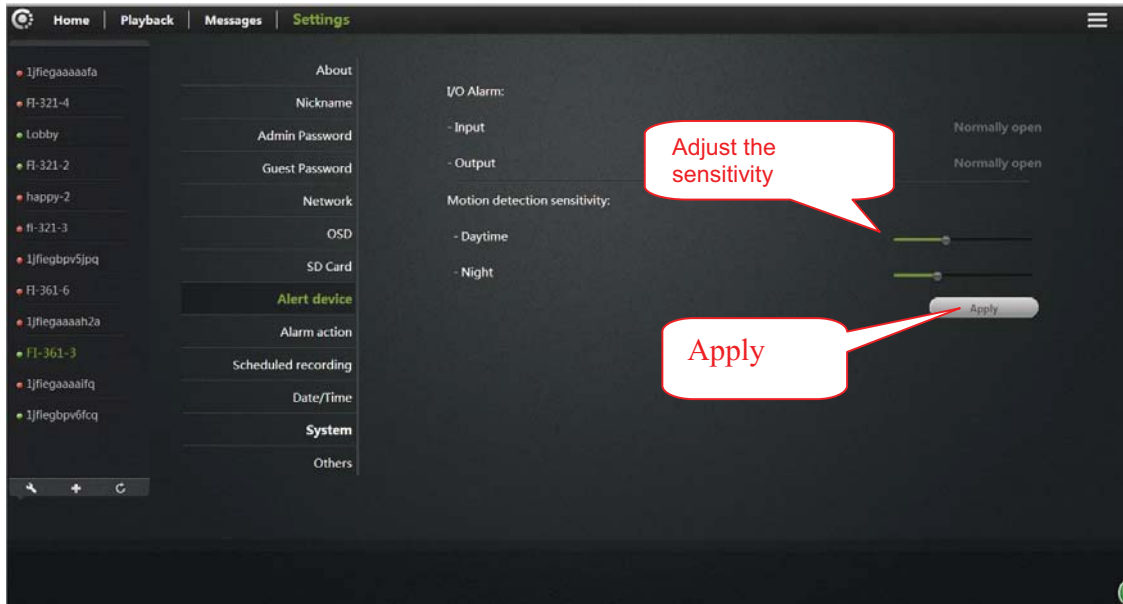
**Repair:** If "Playback" cannot see video file or view the alarm information, can repair the micro SD card. (Note: The repair function may cause part of the micro SD card contents lost)

**Uninstall:** put micro SD card from the camera release

Click Apply to save your changes.

# CP1 USER MANUAL

## 5.8 Camera alarm arming settings:



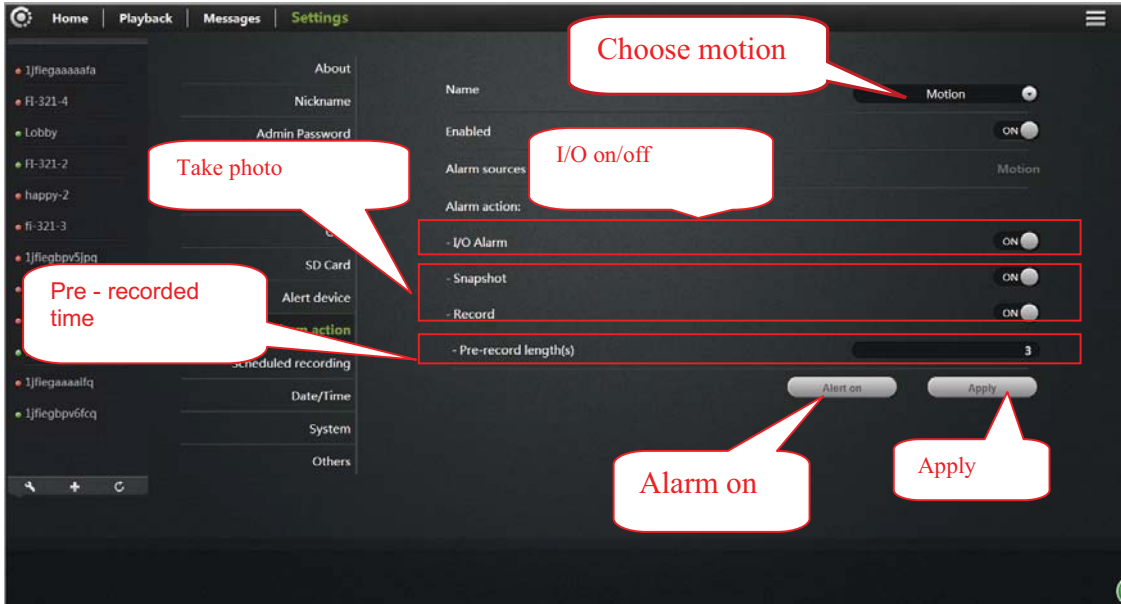
**I / O Alarm input:** When normally open, alarm input port connect with an external alarm sensor (such as door sensor, infrared, smoke alarm detector, etc.) must be a normally open alarm probes. When alarm occurs, the probe switch is closed; network cameras generate alarm triggers, alarm calls according to user settings.

**I / O Alarm output:** When normally open, alarm output port corresponding external alarm devices (such as alarm loudspeakers, sound and light alarm equipment, etc.) must be a normally open type, when an event has occurred, the user sets the Alarm I / O port output , camera alarm output switch is closed, trigger external alarm devices.

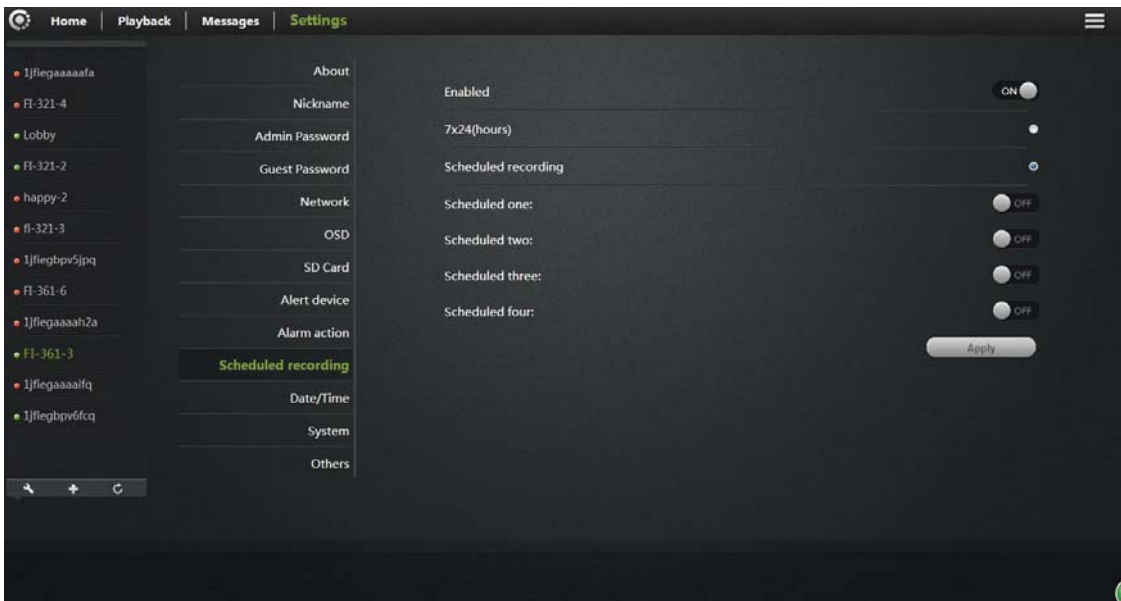
**Sensitivity:** To set the sensitivity of motion detection, the greater the value the higher the sensitivity, relatively the probability of false alarms generated will be

# CP1 USER MANUAL

higher, generally we recommend user to choose the default values, the user also can set up sensitivity based on their will.



## 5.9 Scheduled recording:

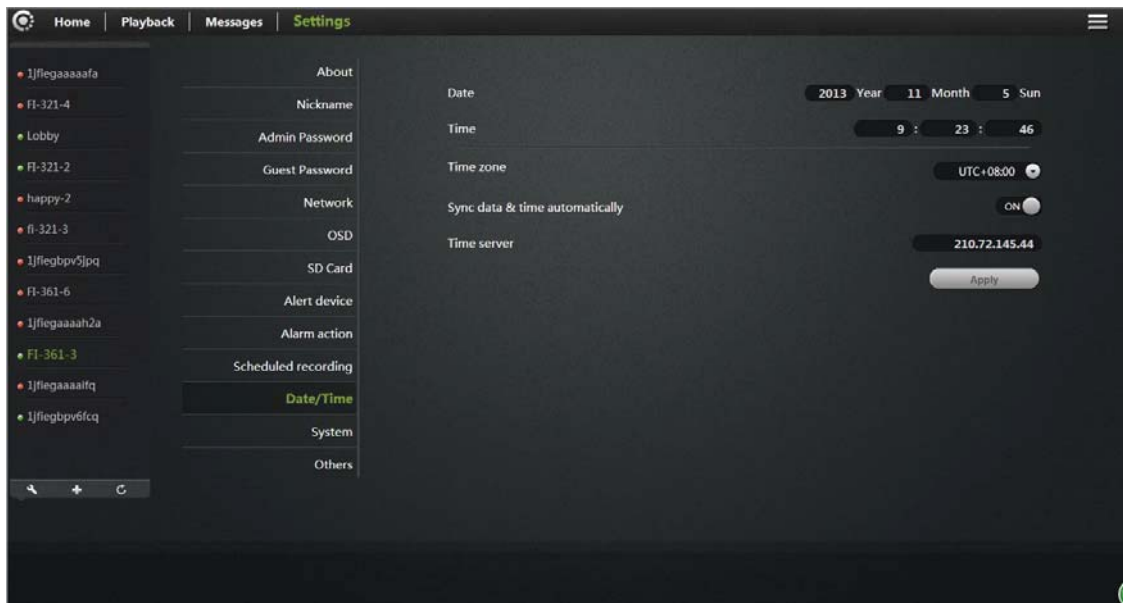


## CP1 USER MANUAL

In this option you can choose the 7\* 24 hour video or scheduled recording.

Note: video files will be stored in SD card, when content is full, it will overridden.

### 5.10 Date / Time:



**Time Server address:** Users can manually enter in the online search to fill the local country time zone server address (default time server address is China time).

**Sync data & time automatically:** When Opening, the cam will automatically synchronize the time displayed on the address bar time server address with corresponding time.

**Time zone:** Users can choose the time zone of the camera.

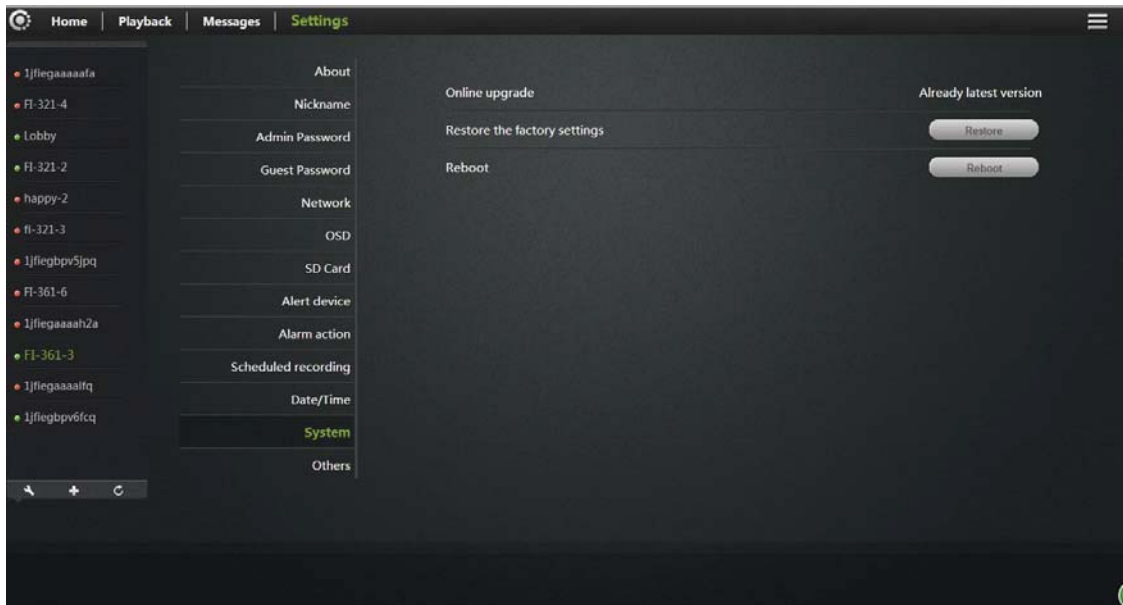
## CP1 USER MANUAL

**Date:** When "time server automatically" turned off, users can manually modify the cam's date.

**Time:** When "time server automatically" turned off, users can manually modify the camera's time.

Click "Apply" to save your changes.

### 5.11 System:



**Online Upgrade:** If you have the latest software, there will be tips <Update> click update, the camera will be online software upgrade, after the upgrade is successful will re-start the Camera.

## CP1 USER MANUAL

**Restore the factory settings:** The user can click the "Restore" button, will pop up on the right

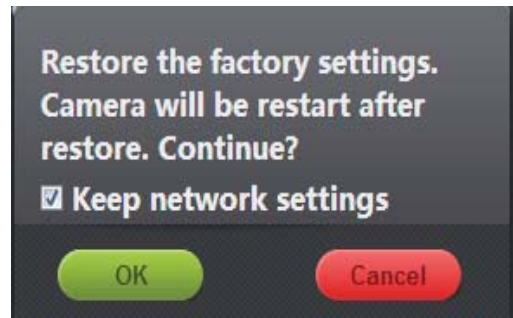
Diagram tips. When the "Save network device" checked, the point is determined, in addition to

Network setup parameters retained, the other parameters are restored to the factory settings back;

When the "Save Network Device" is not checked, the point is determined, all camera parameters

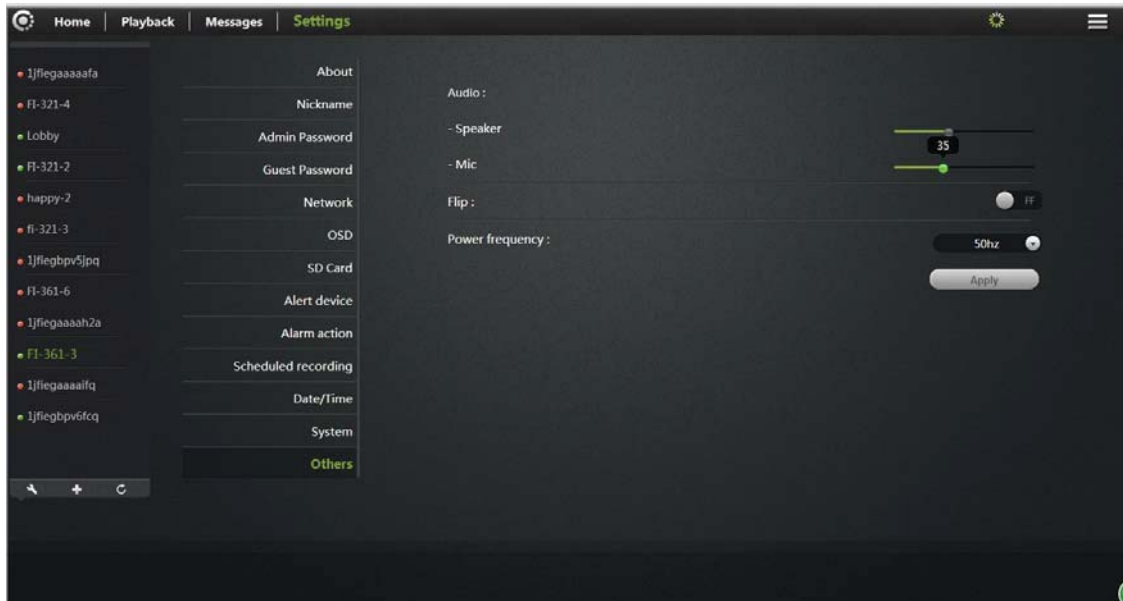
Few are restored to factory settings back, equivalent to click the RESET button.

**Reboot:** Click the reset button after the restart of the camera.



# CP1 USER MANUAL

## 5.12 Other:



### Audio:

**Speaker:** Set the size of the camera's speaker sound, use the mouse to drag the slider to set, the greater the value, the greater the sound from the speaker.

**Mac:** Sets the camera microphone sensitivity, drag the slider with the mouse settings, the greater the value, the more sensitive the microphone receiving sound external environment more, the computer listens to the voice of the larger end, the corresponding listening to ambient noise is greater.

**Flip:** To turn upside down.

**Power Frequency:** 50Hz and 60Hz with two frequencies selected the user machine installation area under power frequency to choose.

Click Apply to save your changes.



## 6. Troubleshooting

This chapter provides solutions for questions or problems in camera installation and operation.

If you encounter problems, please follow solutions below. (Below we take Windows ® Vista ™ and XP as example. Different operation systems have the similar operation.)

### 1). what is Remote Access? How to do that?

Remote access means that you can access a camera from a web on any PC trough internet. So even if you are not at home, you can access a camera, view live video and manage its settings.

How to do that? Please follow the Quick Installation Manual in the packing box.

If your camera does not work, please check whether the following things are right.

....STATE2 (  ) on the camera flashes green 3 times every 3 seconds

....Internet connection is working properly

... The router's LAN & WAN connection are working properly.

... Router UPNP and DHCP are on

... Routers can get a public IP.

... Router has been upgraded to the latest firmware version

## CP1 USER MANUAL

... Restore your camera to factory settings by press “RESET” key one time on camera bottom

... Disconnect router power supply and connect it again to restart

Try again to make your camera work after the above checking.

### 2). Why is network connection unstable?

Network cable may get a problem. You can PING the address of a existing device in the same network. If network cable connects right and network connect right, you should get a reply like bytes = 32 time = 2 ms.

Another possibility is that the network equipments like hubs and switches may have problems. Ensure all network equipments connect and work well.

### 3). Why does the APP show camera not online?

This may be caused by firewall protection (such as MAC addresses filtering, MAC address binding with the IP address). In this situation, please contact your system administrator to check firewall. Firewall may need some configuration changes. For more information, please refer to camera installation.

Ensure STATE1 (  ) or STATE2 (  ) flashes 3 times every 3 seconds.

Router default settings may have a problem. Ensure router DHCP server is on.

If there are multi-level routers, each should connect the other trough WAN (for example, the 1rs router LAN connects the 2<sup>nd</sup> router LAN by a network cable). If

## **CP1 USER MANUAL**

problem still exists, connect your camera with power, and then press “RESET” key on the bottom to restore to factory settings.

### **4). Why are there vertical white lines in image?**

CMOS sensor being exposed to strong light (such as direct exposure to sunlight or halogen light) may cause this problem. CMOS sensor is behind the lens. It is to measure the optical signal and converts it to a digital format, then the computer will convert digital format to images to users. If the CMOS sensor has been in high night for a long time remember not to move it to dark places for it may damage the sensor.

### **5). Blur image. What to do?**

When camera works in dark places, its image may get blur.

Or, your camera does not focus properly. Rotate the lens till you see a clear image.

Web viewing on a computer may get a blur image. Because a computer has much larger screen than a phone, and same resolution image will be amplified.

### **6). Image quality is poor, how to improve it?**

Open [www.vimtag.com](http://www.vimtag.com) and login. Find image quality configuration to adjust the parameters to improve image quality (e.g.: brightness, contrast, color saturation).


### **7). When I view on a web, there is no image. Why?**

## CP1 USER MANUAL

If you are using Internet Explorer, please make sure ActiveX is on. You may need to modify the browser's security settings to allow ActiveX plug-in installed.

If you are using Internet Explorer versions earlier than 7.0, you need to upgrade your Web browser.


### 8). Troubleshooting, LED status indication:

Indicator	LED status	Status Description	Troubleshooting
POWER (power indicator)	<b>Red light</b> Normally on	Power supply is normal	If light is not lit, check the power supply is damaged or the camera hardware failure, requiring repair.
STATE1/STA1 	(OFF)	Wifi was disabled by the user or wifi hardware failure	<ol style="list-style-type: none"> <li>1. Press RESET for 5 seconds to restore the factory settings.</li> <li>2. Make camera with wired Ethernet connection, after landing, in the "Manage" -&gt; "Network", make WIFI enabled;</li> <li>3. Camera hardware failure, requiring repair.</li> </ol>
	<b>Red light</b> Normally on	WIFI router is trying to connect	<ol style="list-style-type: none"> <li>1. Verify WIFI router is good;</li> <li>2. Try the camera placed from somewhere near WIFI router and then reconnect the power.</li> <li>3. Restart WIFI routers and cameras;</li> <li>4. Camera hardware failure, requiring repair.</li> </ol>
	<b>Red</b> Flashing 2 times	Is connected to the router, is trying to obtain an IP address through DHCP	<ol style="list-style-type: none"> <li>1. Please make sure your router's DHCP server is enabled.</li> <li>2. Try to restart the router.</li> <li>3. Manually assign a WIFI router to</li> </ol>

## CP1 USER MANUAL

			the same gateway IP address.
	Red light flashing 3 times	Ip address has been obtained or the user to configure a static ip address, is trying to communicate with the gateway	<ol style="list-style-type: none"> <li>1. Confirm the router is good.</li> <li>2. Camera hardware failure, requiring repair.</li> </ol>
	Green light Normally on	And gateway communication is normal, is trying to communicate with the internet	<ol style="list-style-type: none"> <li>1. User can check whether the network can access the Internet.</li> <li>2. Check whether there are two routers connected (first level router network cable will need to receive a second-class router's WAN port on the job).</li> <li>3. Try the camera placed from somewhere near WIFI router and then reconnect the power.</li> <li>4. Check the router is turned on the firewall to do MAC address filtering.</li> </ol>
	Green flashing 2 times	Internet traffic is normal, is trying to communicate with the cloud server	<ol style="list-style-type: none"> <li>1. Restart the machine or the machine on again to restart.</li> <li>2. Try running the camera, based on the press camera base RESET button hole 6 seconds, set the camera to restore the factory tune.</li> </ol>
	Green light flashing 3 times	Normal communication with the cloud server, you can access the camera via cloud	Normal

## CP1 USER MANUAL

		services	
	Red \ green lights flashing alternately	Wi-Fi for adhoc mode (Wi-Fi did not configure the router / router connection failed / DHCP fails to enter this mode), you can Wi-Fi terminal (mobile phone / pad / notebook computers) connected to the wireless network, and then access the camera through 192.168.188.254.	References Cloud Camera Quick Installation Guide
STATE2/STA2 (  )	(OFF	Ethernet is disabled by the user or the network cable is not connected or Ethernet card hardware failure	<ol style="list-style-type: none"> <li>1. Users press RESET 5 seconds to restore the factory settings.</li> <li>2. Check \ replace the camera and connect the network cable between the routers.</li> <li>3. Camera hardware failure, requiring repair.</li> </ol>
	Red light	Network cable is connected, the IP address is obtained	<ol style="list-style-type: none"> <li>1. Please make sure your routers DHCP server is enabled.</li> <li>2. Try to restart the router.</li> <li>3. Manually assign a letter to the Ethernet IP address of the router the same gateway.</li> </ol>
	Flashing red	IP address has been obtained or the user to configure a static IP address, is trying to communicate with the gateway	<ol style="list-style-type: none"> <li>1. Confirm whether the router is good.</li> <li>2. Camera hardware failure, requiring repair.</li> </ol>

## CP1 USER MANUAL

	Green light	And gateway communication is normal, is trying to communicate with the internet	<ol style="list-style-type: none"> <li>1. The user to check whether the network can access the Internet.</li> <li>2. Check whether there are two routers connected (first level router network cable will need to receive a second-class router's WAN port on the job).</li> <li>3. Check the router is turned on the firewall to do MAC address filtering.</li> </ol>
	Green flashing 2 times	Internet traffic is normal, is trying to communicate with the cloud server	<ol style="list-style-type: none"> <li>1. Restart the machine or the machine on again to restart.</li> <li>2. Try running the machine, based on the press machine base RESET button hole 6 seconds, set the machine to restore the factory tune.</li> </ol>
	Green light flashing 3 times	Normal communication with the cloud server, you can access the camera via cloud services	Normal
	Red \ green lights flashing alternately	DHCP fails, use a temporary IP address 192.168.187.254, Users can access the same computer and webcam LAN, set different segments IP (192.168.187.xxx), and then access the camera through 192.168.187.254	References << >> Cloud Camera Quick Installation Guide.

## **7. Wireless Infrastructure**

IP CAMERA wireless products are based on industry standards for your home, business or public access wireless networks to provide easy and compatible high-speed wireless connection. IP CAMERA strictly follows the IEEE standard.

Wireless LAN (WLAN) is network that transmits and receives data through wireless signal not electrical wiring. WLAN is increasingly used in home, office, airport, coffee shop, and other public places. WLAN needs no electrical wiring or other base equipments. It helps people to work and communicate easier and more efficient with its mobility.

### **Tips:**

When you use a wireless network, please note the following:

#### **Put your router or access point at center area**

Put the router / access point at the highest point of the room, so the signal can be distributed to whole room space. If you have a two-story house, you need to install a repeater to extend signal coverage.

#### **Eliminate interference**



## **CP1 USER MANUAL**

Make sure home appliances such as cordless telephones, microwaves, and televisions are far from the router / access point, which helps reduce interference.

### **Safety**

Prevent your next door neighbors or others connecting to your wireless network. Open WPA or WEP in the router to protect your wireless network. Please refer to the product manual for more information on this feature.

## **8. Wireless Security**

This section introduces different levels of security to protect your data from invasion.

IPCAM provides the following security types:

- WPA-PSK (pre-shared key)
- WEP (Wired Equivalent Privacy)

### **What is WEP?**

## **CP1 USER MANUAL**

WEP is Wired Equivalent Privacy. It is based on the IEEE 802.11 standard and uses the RC4 encryption algorithm. WEP provides security by data encryption on your wireless network, so that to ensure secure transitions from one wireless device to the other.

To access a WEP network, you must know the key. Key is a code string. When using WEP, you must specify the level of encryption. Type of encryption determines the key length. 128-bit encryption requires a longer key than 64-bit encryption. Key is defined by HEX (16 hex -0-9, AF) or ASCII (American Standard Code for Information Interchange - alphanumeric characters) format. ASCII format allows you to enter a string that is easy to remember. ASCII is converted into HEX when used on the internet. Four keys can be defined for easy changing if needed.

### **What is WPA?**

WPA or Wi-Fi Protected Access is a Wi-Fi standard, designed to improve WEP (Wired Equivalent Privacy) security features.

There are two major improvements over WEP:

It improved data encryption through the Temporal Key Integrity Protocol (TKIP). TKIP mixes the keys using a hash algorithm, and ensures that the keys are not changed by adding integrity-checking

## **CP1 USER MANUAL**

feature. Based on 802.11i, WPA2 replaces TKIP with Advanced Encryption Standard (AES) instead of TKIP.

User authentication through EAP gets missed in WEP. WEP is easily to be sniffed or stolen for it accesses wireless network through computer MAC address. EAP is built on a more secure public key encryption system to ensure that only authorized network users can access the network.

WPA-PSK/WPA2-PSK uses a pass phrase or key to authenticate your wireless connection. Key is an alpha-numeric password between 8 and 63 characters long. Password can include symbols and spaces. This key must be the same with your wireless router key or access point key.

After camera installation as the Quick Installation guides, you can use the assigned IP address of the camera. Because you share the same network with one or more computers through a router, the assigned IP address is a local address. Then you can view your camera in local network.

# **CP1 USER MANUAL**

## **9.Specifications**

**FCC Statement:**

1. This device complies with Part 15 of the FCC Rules. Operation is subject to the following two conditions:

(1) This device may not cause harmful interference.

and(2) This device must accept any interference received, including interference that may cause undesired operation.

2. Changes or modifications not expressly approved by the party responsible for compliance could void the user's authority to operate the equipment.

**NOTE:**

This equipment has been tested and found to comply with the limits for a Class B digital device, pursuant to Part 15 of the FCC Rules. These limits are designed to provide reasonable protection against harmful interference in a residential installation.

This equipment generates uses and can radiate radio frequency energy and, if not installed and used in accordance with the instructions, may cause harmful interference to radio communications. However, there is no guarantee that interference will not occur in a particular installation. If this equipment does cause harmful interference to radio or television reception, which can be determined by turning the equipment off and on, the user is encouraged to try to correct the interference by one or more of the following measures:

Reorient or relocate the receiving antenna.

Increase the separation between the equipment and receiver.

Connect the equipment into an outlet on a circuit different from that to which the receiver is connected.

Consult the dealer or an experienced radio/TV technician for help.

The distance between user and products should be no less than 20cm

#### FCC Statement

1. This device complies with Part 15 of the FCC Rules. Operation is subject to the following two conditions:

(1) This device may not cause harmful interference.

(2) This device must accept any interference received, including interference that may cause undesired operation.

2. Changes or modifications not expressly approved by the party responsible for compliance could void the user's authority to operate the equipment.

#### NOTE:

This equipment has been tested and found to comply with the limits for a Class B digital device, pursuant to Part 15 of the FCC Rules. These limits are designed to provide reasonable protection against harmful interference in a residential installation.

This equipment generates uses and can radiate radio frequency energy and, if not installed and used in accordance with the instructions, may cause harmful interference to radio communications. However, there is no guarantee that interference will not occur in a particular installation. If this equipment does cause harmful interference to radio or television reception, which can be determined by turning the equipment off and on, the user is encouraged to try to correct the interference by one or more of the following measures:

Reorient or relocate the receiving antenna.

Increase the separation between the equipment and receiver.

Connect the equipment into an outlet on a circuit different from that to which the receiver is connected.

Consult the dealer or an experienced radio/TV technician for help.

#### RF Exposure Warning:

The antenna(s) used for this device must be installed to provide a separation distance of at least 20 cm from all persons and must not be co-located or operating in conjunction with any other transmitter.