

bewell
connect



QUICK STEP GUIDE



By Visionmed

This device complies with Part 15 of the FCC Rules. Operation is subject to the following two conditions: (1) this device may not cause harmful interference, and (2) this device must accept any interference received, including interference that may cause undesired operation.

Changes or modifications not expressly approved by the party responsible for compliance could void the user's authority to operate the equipment.

This equipment has been tested and found to comply with the limits for a Class B digital device, pursuant to Part 15 of the FCC Rules. These limits are designed to provide reasonable protection against harmful interference in a residential installation. This equipment generates, uses and can radiate radio frequency energy and, if not installed and used in accordance with the instructions, may cause harmful interference to radio communications. However, there is no guarantee that interference will not occur in a particular installation.

If this equipment does cause harmful interference to radio or television reception, which can be determined by turning the equipment off and on, the user is encouraged to try to correct the interference by one or more of the following measures:

- Reorient or relocate the receiving antenna.
- Increase the separation between the equipment and receiver.
- Connect the equipment into an outlet on a circuit different from that to which the receiver is connected.
- Consult the dealer or an experienced radio/TV technician for help.

This equipment must be installed and operated in accordance with provided instructions and the antenna(s) used for this transmitter must be installed to provide a separation distance of at least 20 cm from all persons and must not be co-located or operating in conjunction with any other antenna or transmitter. End-users and installers must be provided with antenna installation instructions and transmitter operating conditions for satisfying RF exposure compliance.

CONTENU DE LA BOÎTE / CONTENTS

- | | |
|--|---|
| - 1 caméra MyiVision | - 1 MyiVision Camera |
| - 1 antenne WiFi | - 1 WiFi antenna |
| - 1 câble réseau | - 1 network cable |
| - 1 transformateur électrique | - 1 electrical transformer |
| - 1 système d'accroche par ventouse | - 1 hangs system by suction cup |
| - 2 coques interchangeable (blanc et noir) | - 2 exchangeable shells (white and black) |

1 INSTALLER / INSTALL

Branchez le câble fourni entre votre box internet et la caméra.

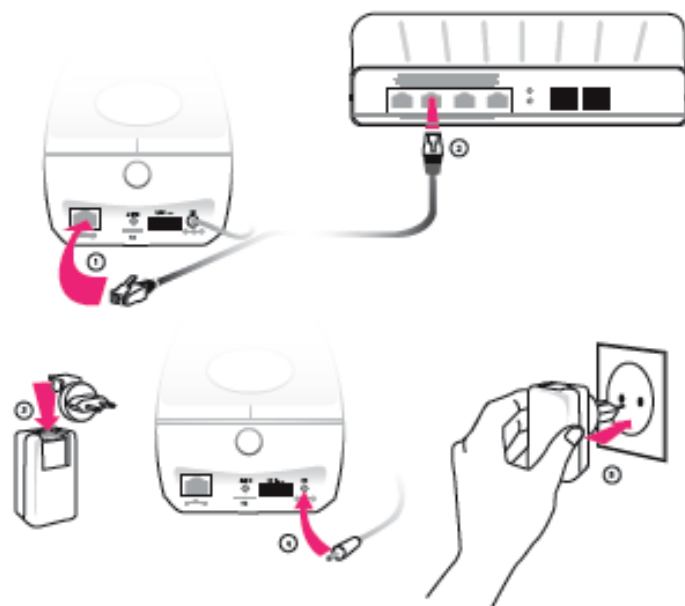
Branchez électriquement la caméra.

Visser l'antenne WiFi sur la caméra.

Connect network cable from camera to modem.

Connect power adapter to the camera.

Screw the WiFi antenna on the camera.



2 TELECHARGER / DOWNLOAD

Téléchargez et lancez l'app BewellConnect MyiVision sur votre iPhone.

Download and launch BewellConnect MyiVision app.



3 AJOUTER UNE CAMÉRA PAR QR CODE / ADDING A CAMERA WITH QR CODE

Appuyez sur "Scanner l'étiquette QR Code".

Placez le QR Code de l'étiquette incluse dans la boîte sous l'objectif de votre téléphone jusqu'à ce qu'il le scanne automatiquement, ou entrez le numéro de code manuellement.

Press "Add camera with QR Code"

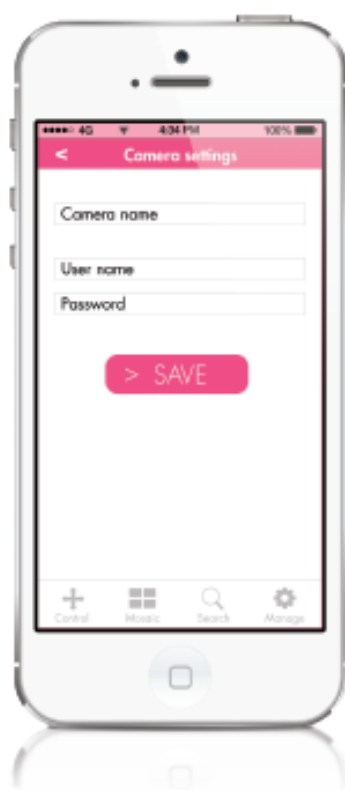
Place the QR Code of the tag included in the box before the lens of your phone camera until it flashes it automatically, or enter the code number manually.



4 CONFIGURER / SET UP

Donnez un nom à votre caméra, enregistrez votre nom d'utilisateur et votre mot de passe.

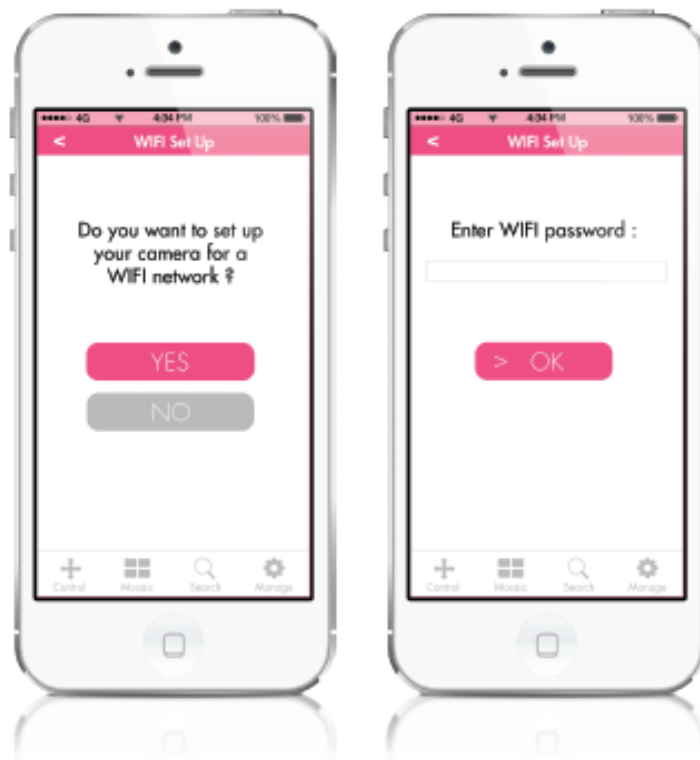
Name your camera, set your user name and password.



5 CONFIGURER WIFI / WIFI SET UP

Si vous souhaitez utiliser votre caméra via le réseau WIFI choisissez "Oui". Entrez son mot de passe.

If you wish to use your camera via WIFI choose "Yes".
Enter its password.



Si vous souhaitez continuer d'utiliser votre caméra par le réseau Ethernet appuyer sur "Non" et ignorer ce chapitre.

If you wish to continue using your camera via Ethernet, press "No" and ignore this chapter.

5 bis DÉBRANCHER / UNPLUG

Débranchez le câble réseau de la caméra et attendez que la caméra redémarre.

Unplug network cable and wait for the camera to re-start.



6 REGARDER / WATCH

Votre caméra est prête !

You camera is ready !



VISIOMED Group SA
75116 PARIS - France
contact@visiomed-lab.com
www.visiomed-lab.com

Customers Service
0892 350 334
(0,34€/mn)

© 2014 Visiomed Group SA. Registered Brands and designs. The content keeps the right to modify the photos and characteristics without previous notice. iPhone, iPod touch and iPad are trademarks of Apple Inc., registered in the U.S. and other countries. iPad is a trademark of Apple Inc.

www.bewell-connect.com

This equipment must be installed and operated in accordance with provided instructions and the antenna used for this transmitter must be installed to provide a separation distance of at least 20cm from all persons and must not be co-located or operating in conjunction with any other antenna or transmitter. End-users and installers must be provided with antenna installation instructions and transmitter operating conditions for satisfying RF exposure compliance.