

level™



## Welcome to Level™

Fitness-tracking technology has been built into this eyewear, making it easy to track your steps, calories burned, and distance traveled. And just by being active, you'll also have the chance to give the gift of sight to someone in need.

Follow the enclosed instructions to get started. And visit [LevelTechnology.com](http://LevelTechnology.com) to learn more.

## 1 Charge Your Level eyewear

Plug the Micro USB cable into the left wearing temple. The indicator light will blink while charging. When the light stops blinking and is solid, the battery is fully charged.



**\*\*YOUR LEVEL EYEWEAR MUST BE PLUGGED IN AND CHARGING DURING THE INITIAL SET UP\*\***

## 2 Set Up an Account

Create an account on the Level app using your e-mail address. You will not be able to change the email connected to your account later.



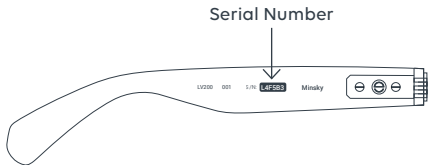
- 3 From the Level App, scan the QR tag included with your eyewear to pair your device.



**\*\*YOUR LEVEL EYEWEAR MUST BE PLUGGED IN AND CHARGING DURING THE INITIAL SET UP\*\***

4

If you lose your QR Card, you have the option to manually input the serial number.



Visit [leveltechnology.com](http://leveltechnology.com)  
to review our terms of use and other  
important legal policies before use.



Not for resale. ©2017 VSP Global. Level is  
a trademark of Vision Service Plan. Other  
trademarks and brands are the property of  
their respective owners.

Patents Pending.



## HEALTH WARNING

If you have a pacemaker or other internal electronic device, consult your physician before using an athletic tracking device such as Level that monitors motion.

Always consult your physician before beginning or modifying any exercise program.

Level's activity tracking functions and accessories, and related data, are not intended for medical purposes, and not intended to diagnose, monitor, treat, cure, or prevent any disease or condition.

Level relies on sensors that track your motion.

The data and information provided by these devices is intended to be a close estimation of your activity and metrics tracked, but may not be completely accurate, including steps, distance, and calorie data.

## **WARNING**

**This device contains a lithium-ion polymer battery pack, which can overheat or catch fire if handled improperly. Use only with authorized equipment and only as directed.**

Failure to follow any of these battery instructions could lead to fire, overheating, smoke, rupture, or short-circuits:

- Do not disassemble or modify battery. Attempting to may breach safety barriers. The battery is not removable or user-replaceable.
- Do not use a damaged battery, such as a battery that is dented, perforated, or bent.

- Do not use the battery near heat sources. This can degrade performance or capacity.
- Do not expose the device or batteries to fire, explosion, or other hazard.
- Do not immerse or expose batteries to water or other liquids.
- Do not use unauthorized chargers. Unauthorized chargers could cause the battery to overcharge or overcome safety features, or lead to abnormal chemical reactions.

- Do not operate the glasses outside of the temperature ranges of 32°F - 113°F while charging or -4°F - 140°F when not charging.
- When storing the device for an extended time period, store within the temperature ranges specified above.
- Contact your local waste disposal department to dispose of the eyewear/ batteries in accordance with applicable local laws and regulations.

# **FCC Part 15 Disclosures**

## **Part 15 Interference Statement**

This device complies with Part 15 of the FCC Rules. Operation is subject to the following two conditions:

1. This device may not cause harmful interference.
2. This device must accept any interference received, including interference that may cause undesired operation.

## **15.21 Modification Statement**

Unapproved Modifications – This device has been designed to comply with the rules of the Federal Communications Commission. Changes or modifications not expressly approved could void the user's authority to operate the equipment.

## **Class B Digital Device Statement**

This equipment has been tested and found to comply with the limits for a Class B digital device, pursuant to part 15 of the FCC Rules. These limits are designed to provide reasonable protection against harmful interference in a residential installation.

This equipment generates, uses and can radiate radio frequency energy and, if not installed and used in accordance with the instructions, may cause harmful interference to radio communications. However, there is no guarantee that interference will not occur in a particular installation.

If this equipment does cause harmful interference to radio or television reception, which can be determined by turning the equipment off and on, the user is encouraged to try to correct the interference by one or more of the following measures:

- Reorient or relocate the receiving antenna.
- Increase the separation between the equipment and receiver.
- Connect the equipment into an outlet on a circuit different from that to which the receiver is connected.
- Consult VSP Customer Support or an experienced technician for help.



## **Level™ Limited One-Year Warranty Terms Available Online**

Your Level™ eyewear comes with a limited one-year warranty. The terms are available at <http://leveltechnology.com/terms-of-use/>. If you do not have internet access, please call 844-630-6395 if you wish to obtain a copy.

California law requires this warning to be given to customers in the state of California.

**CALIFORNIA PROP. 65**

**WARNING:** This product contains chemicals known to the state of California to cause cancer and birth defects or other reproductive harm.

For more information go to  
<http://oehha.ca.gov/prop65.html>

JOB#3461-16-OGXA 4/16