

# MCT-320 SMA

## Wireless Contact Sensor


**Visonic®**

## Installation Instructions

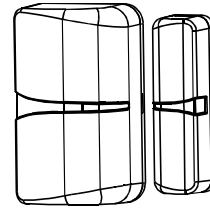
### 1. INTRODUCTION

The MCT-320 is a fully supervised, wireless magnetic contact sensor, for use with iControl control panels. The sensor includes a built-in reed switch (that opens upon removal of a magnet placed near it).

The MCT-320 tamper switch is activated when the cover is removed or when the detector is removed from the wall.

A periodic supervision message is transmitted automatically. The target receiver is thus informed, at regular intervals, of the unit's active participation in the system.

Operating power is obtained from an on-board 3 V Lithium battery. When the battery voltage is low, a "low battery" message is sent to the receiver.



MCT-320 SMA

### 2. SPECIFICATIONS

#### WIRELESS

**Frequency:** Frequency: 2.4 GHz as per IEEE 802.15.4

**Tamper Alert:** Reported when a tamper event occurs and in any subsequent message, until the tamper switch is restored.

**Supervision Message:** Signaling at 24-minute intervals.

#### ELECTRICAL

**Internal Battery:** 3V Lithium battery, type CR2. Use Panasonic, GP or Sanyo only.

**Battery Life Expectancy:** 3-5 years (for typical use).

**Battery Power Test:** Performed immediately upon battery insertion and periodically every several hours.

**Battery Supervision:** Automatic transmission of battery condition data as part of any status report.

#### ENVIRONMENTAL

**Operating Temperature:** -10°C to 55°C (14°F to 131°F).

**Dimensions:** 51 x 30 x 21 mm (2 x 1-3/16 x 13/16 in.)

**Weight (including battery):** 36g (1.27 oz)

#### COMPLIANCE WITH STANDARDS

Designed to comply with UL 639, ULC-S306, Title 47 CFR Part 15, IC RSS-210

This device complies with Part 15 of the FCC Rules and RSS-210 of Industry and Science Canada. Operation is subject to the following two conditions: (1) This device may not cause harmful interference, and (2) this device must accept any interference received, including interference that may cause undesired operation.

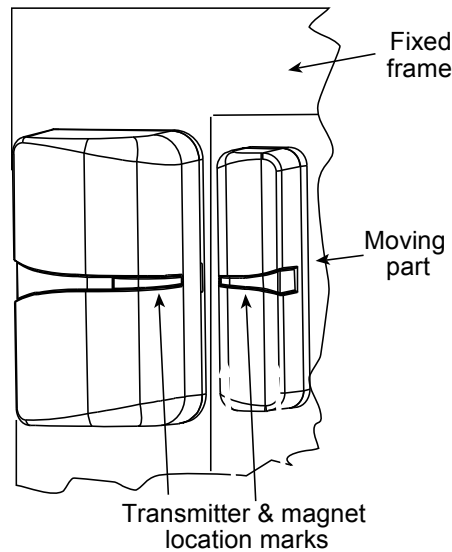


Fig. 1 – MCT-320 SMA

### 3. PAIRING/DEFAULTING THE SENSOR

To pair the sensor to the control panel, you must set it to pairing mode.

1. Press and hold down the sensor's tamper switch.
2. Insert the battery into the sensor.
3. Release the tamper switch and press it again within 4 seconds.
4. Complete the pairing procedure on the control panel (see the pairing instructions in the control panel's installation guide).

## 4. MOUNTING

**NOTE:** It is highly recommended to attach the transmitter to the top of the door/window on the fixed frame and the magnet to the movable part (door or window). Make sure that the magnet is located not more than 6 mm (0.25 in.) from the transmitter's marked side. The transmitter should be mounted on the fixed surface and the magnet on the moving surface (see Figure 1).

### Magnet Mounting

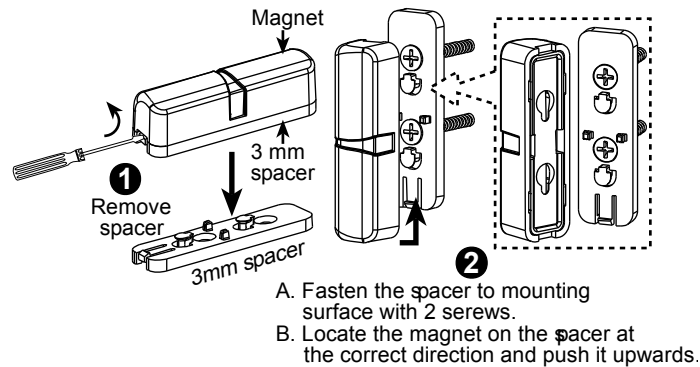


Fig. 2 – Magnet Mounting

### Magnet Mounting with Optional Spacer(s)

Optional spacer(s), 3 mm width, 7mm with, or both, can be used for the magnet mounting.

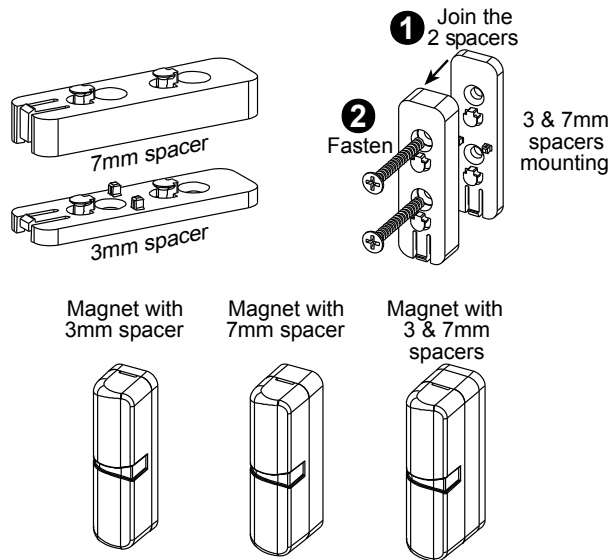


Fig. 3 – Magnet Spacers

### Sensor Mounting

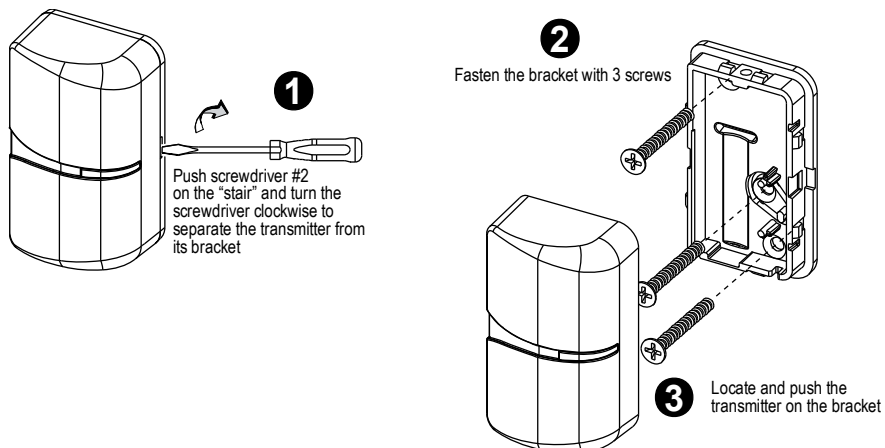


Fig. 4 – Transmitter Mounting

## 5. TESTING THE SENSOR

Close the door or window, thus restoring it to the undisturbed state.

## 6. TROUBLESHOOTING

If you encounter one of the following problems with the MCT-320 SMA, perform the suggested remedy:

Problem	Remedy
Attempt to pair the sensor is unsuccessful.	Make sure that the sensor has been defaulted and is set to pairing mode (see section 3).
The sensor and the panel do not communicate.	Perform the signal strength testing procedure described in the control panel installation manual. Make sure that the signal is sufficient. If necessary, replace the sensor's battery.

Problem	Remedy
The sensor sends a Low Battery indication.	To ensure continuous proper operation, replace the battery within two weeks of the first Low Battery indication.
Panel does not arm because of an unrecognized sensor malfunction	<b>Consult with your installer or system provider before you disable a zone.</b> Disable the detector zone (see the control panel user manual). Note that disabling a sensor zone lowers the overall security level of your system.

## 7. PRODUCT LIMITATIONS

Visonic Ltd. wireless systems are very reliable and are tested to high standards. However, due to low transmitting power and limited range (required by FCC and other regulatory authorities), there are some limitations to be considered:

**A.** Receivers may be blocked by radio signals occurring on or near their operating frequencies, regardless of the digital code used.

**B.** A receiver responds only to one transmitted signal at a time.

**C.** Wireless devices should be tested regularly to determine whether there are sources of interference and to protect against faults.

**The user is cautioned that changes or modifications to the unit, not expressly approved by Visonic Ltd., could void the user's FCC or other authority to operate the equipment.**



### W.E.E.E. Product Recycling Declaration

For information regarding the recycling of this product you must contact the company from which you originally purchased it. If you are discarding this product and not returning it for repair then you must ensure that it is returned as identified by your supplier. This product is not to be thrown away with everyday waste.  
Directive 2002/96/EC Waste Electrical and Electronic Equipment.



**VISONIC LTD. (ISRAEL):** P. O. B 22020 TEL-AVIV 61220 ISRAEL. PHONE: (972-3) 645-6789. FAX: (972-3) 645-6788  
**VISONIC INC. (U.S.A.):** 65 WEST DUDLEY TOWN ROAD, BLOOMFIELD CT. 06002-1376. PHONE: (860) 243-0833, (800) 223-0020. FAX: (860) 242-8094  
**VISONIC LTD. (UK):** UNIT 6 MADINGLEY COURT CHIPPENHAM DRIVE KINGSTON MILTON KEYNES MK10 0BZ. TEL: (0870) 7300800 FAX: (0870) 7300801  
**PRODUCT SUPPORT:** (0870) 7300830

**VISONIC GmbH (D-A-CH):** KIRCHFELDSTR. 118, D-40215 DÜSSELDORF. TEL.: +49 (0)211 600696-0. FAX: +49 (0)211 600696-19  
**VISONIC IBERICA:** ISLA DE PALMA, 32 NAVE 7, POLÍGONO INDUSTRIAL NORTE, 28700 SAN SEBASTIÁN DE LOS REYES, (MADRID), ESPAÑA. TEL (34) 91659-3120,  
 FAX (34) 91663-8468. [www.visonic-iberica.es](http://www.visonic-iberica.es)  
 INTERNET: [www.visonic.com](http://www.visonic.com)  
 ©VISONIC LTD. 2011 MCT-320 SMA D-303359 (Rev 0, 07/11)

