

MCT-425

Supervised Wireless PowerCode Smoke Detector



Visonic

Installation Instructions

1. DESCRIPTION AND APPLICATIONS

The MCT-425 is photoelectric smoke detector designed to sense smoke, but not gas, heat or flame and fitted with a PowerCode-type UHF transmitter. It provides early warning of developing fire by sounding an alarm with its built-in alarm horn, and by transmitting a coded alarm signal to a PowerCode receiver or to a compatible wireless alarm control panel.

It must be borne in mind, though, that effective pre-warning of fire accidents is only possible if the detector is located, installed and maintained properly as described in this manual.

WARNING: This smoke detector is designed for use in a single residential unit only, which means that it should be used inside a single family home or apartment. It is not meant to be used in lobbies, hallways, basements or another apartment in multi-family buildings, unless there are already working detectors in each family unit. Smoke detectors, placed in common areas outside the individual living unit, such as on porches or in hallways, may not provide early warning to residents. In multi-family buildings, each family living unit should obtain its own detector.

WARNING: This detector is not meant to be used in non-residential buildings. Warehouses, industrial or commercial buildings and special purpose non-residential buildings require special fire detection and alarm systems. This detector alone is not a suitable substitute for complete fire detection systems for places where many people live or work, such as hotels or motels. The same is true of dormitories, hospitals, nursing homes or group homes of any kind, even if they were

once single family homes. Please refer to NFPA 101, the Life Safety Code, NFPA71, 72A, 72B, 72C, 72D and 72E for smoke detector requirements for fire protection in buildings not defined as "households".

WARNING: This detector, if used as a stand-alone unit, will not alert people who are hard of hearing.

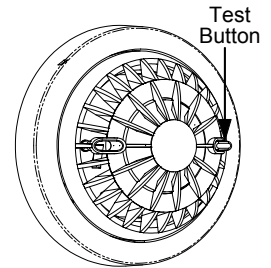


Figure 1. General View

2. INSTALLATION SUMMARY

2.1 Disassembly

Separate the unit from its mounting bracket as shown in Figure 2.

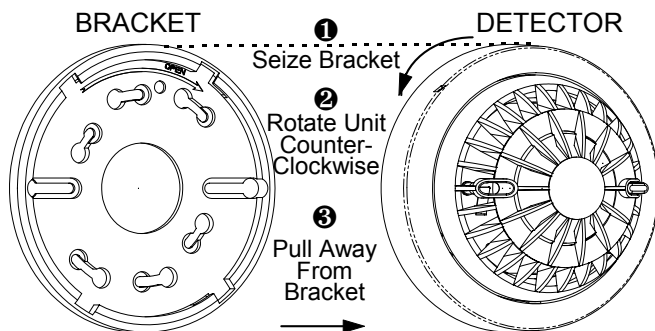


Figure 2. Separating the MCT-425 from its Bracket

2.2 Setting the Function Switch

The MCT-425 has a 4-position DIP switch function selector (see Figure 3). The switch levers are numbered 1 to 4, and each switch allows you to select one of two options.

Set the function switches as desired. The ON position is indicated on the switch body.

Table 1. Function selector settings

Sw-	Marking	Pos.	Selected Option	Default
SW-1	LED	ON	LED will light upon transmission	ON
		OFF	LED is disabled	
SW-2	RST	ON	"Restore" events reported	ON
		OFF	"Restore" events not reported	
SW-3	TRR	ON	Do not use!	OFF
		OFF	Always OFF	
SW-4	BAT	ON	Do not use!	OFF
		OFF	Alkaline or Lithium battery is being used	

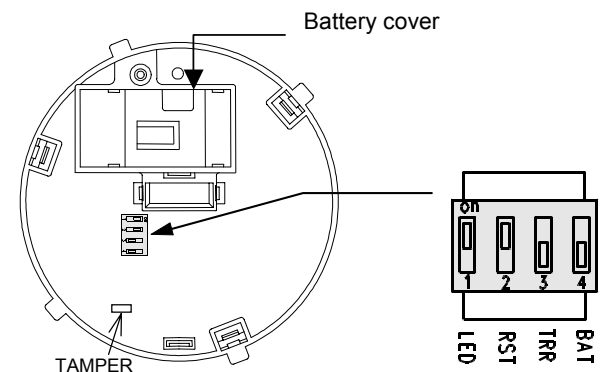


Figure 3. Function Selector and Battery Cover

2.3 Definitions of LED Light and Buzzer

The red and yellow LED light and buzzer turn on and/or off to indicate various situations. There are several LED light and buzzer operations.

- When the red LED flashes every 30 seconds, this means **power on**, i.e., the detector is energized.
- When the red LED flashes and the buzzer beeps intermittently, this means **alarm for potential smoke hazard**.
- When the red LED flashes together with buzzer beeps for every 30 seconds with temporal tone 0.5 second on and 0.5 second off intermittently, this means **battery power is low**.
- The yellow LED turns on every time an RF signal is transmitted to the control panel.

2.4 Battery Connection and Initial Test

CAUTION: The MCT-425 is fitted with cover latches that will prevent the cover from closing if there is no battery inside.

The smoke detector is supplied with a 9V battery seated within its holder but insulated from the battery terminals.

- A. Connect the snap-on battery clip to the battery terminals. **The clip will not fit if the contacts are reversed, but take care not to make a prolonged reverse contact - the battery will discharge rapidly through the built in protection diode!**
Note: When the battery first makes contact, the alarm horn may sound for one second. This indicates that the battery is connected properly.
- B. Push the battery firmly in until it is seated tightly within the holder, with the snap-on clip pressed against the contact springs.
- C. Close the cover, then press the test button for about 5 seconds until the horn sounds two sequences of a loud 3-beep alarm. **This means that the smoke detection section is working properly.**

2.5 Resetting the Transmitter Module and Enrolling its PowerCode ID

A rear tamper protection switch is mounted under the PC board. The tamper switch actuator, extending through a hole in the base (see Figure 4), is pressed against the bracket when the unit is attached to the bracket.

Removal of the unit from the bracket will cause the switch contacts to open, creating a tamper event, which will be reported by the transmitter to the control panel.

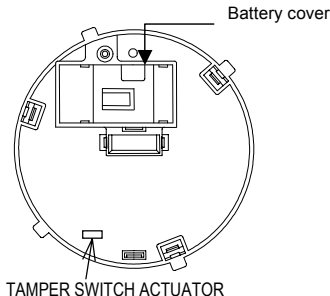


Figure 4. Rear Tamper

Refer to the control panel's installation instructions and follow the procedure given there for enrolling transmitter IDs in the control panel's memory. When required to initiate a transmission for enrollment, press the smoke detector's test button until the built-in horn sounds, or press the tamper switch.

Note: It is much easier to carry out this operation while holding the MCT-425 in your hand, close to the control panel.

2.6 Mounting the Bracket in Place

Read Section 4 in this manual first, then decide where to install a detector. Refer to Figures 5 and 6 and proceed as follows:

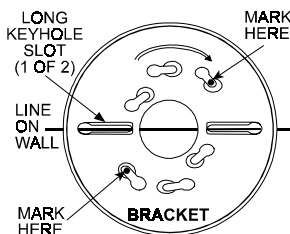


Figure 5. Aligning the Bracket

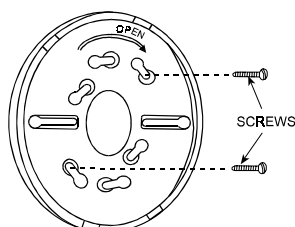


Figure 6. Mounting the Bracket

- A. At the location where you intend to install the detector, draw a horizontal line six inches long.
- B. Remove the mounting bracket from your unit by rotating it counterclockwise (see Figure 2).
- C. Place the bracket so that the two longest hole slots are aligned on the line. In each of the keyhole slots, draw a mark to locate a mounting plug and screw as in Figure 5.
- D. Remove the bracket.
- E. Using the appropriate size drill, drill two holes at the marks and insert wall plugs.
- F. Using the two screws and wall plugs (all supplied), attach the bracket to the wall (see Figure 6).

2.7 Final Assembly and Test

Note: Unauthorized removal of the unit from the bracket will initiate a tamper alert!

- A. Press the test button until the built-in horn sounds. Verify that the transmitted signal has been received at the control panel, and that the control panel responds accordingly by activating the fire alarm siren or any other warning device.
- B. Attach the detector to the bracket as shown in Figure 7. Pull outward to make sure that the detector is securely attached to the bracket.

Note: A battery must be inserted into the detector before the detector can be mounted onto the bracket.

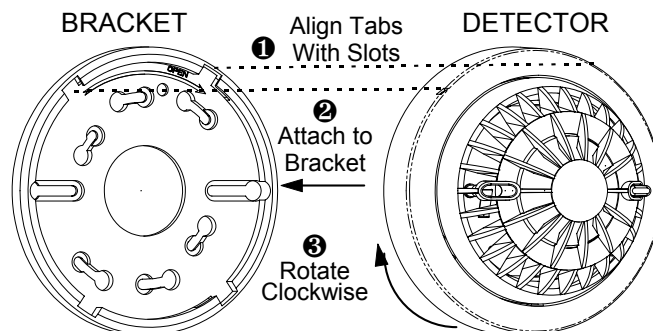


Figure 7. Final Assembly

3. SPECIFICATIONS

SMOKE DETECTOR

Detection Sensitivity: 2.66 ±1.11 %/ft obscuration

Alarm Sound Level: 85 dB at 3 m (10 feet)

TRANSMITTER AND CODING

Operating Frequency (MHz): 315, 433.92, 868.95, 869.2625 or other frequency according to local requirements.

Transmitter's ID Code: 24-bit digital word, over 16 million combinations, pulse width modulation.

Overall Message Length: 36 bits

Supervision: Automatic signaling at 60-minute intervals (US version), 15-minute interval (UK version) or according to the local standards.

Tamper Alerts: Tamper event (removal of the unit from its bracket) is reported once, until the tamper switch is restored.

Transmission Indicator: Yellow LED lights upon transmission (visible only when Switch SW-1 is ON).

ELECTRICAL DATA

Power Source: 9 Volt alkaline or lithium.

Operation Voltage: From 7.2 V to 9.5 V.

Current Drain: 28 µA standby, 20 mA in operation

Battery Life Expectancy:

Alkaline: at least 1 year (for typical use)

Lithium: at least 2 years (for typical use)

Battery Supervision: Automatic transmission of battery status data as part of any transmitted message.

Audible Low Battery Warning: Built-in horn beeps once a minute for up to 30 days when the battery voltage drops.

PHYSICAL DATA

Operating Temperature: 0°C to 37.8°C (32°F to 100°F).

Relative Humidity: 10% to 85%

Dimensions: 130 mm (5.12") x 75 mm (2.95")

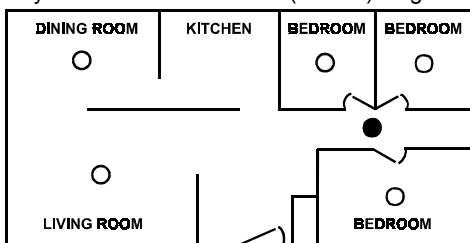
Weight (including battery): 272 g (9.6 oz)

4. SMOKE DETECTOR INSTALLATION OVERVIEW

4.1 Where to Install Smoke Detectors

Smoke detectors should be installed in accordance with the NFPA Standard 74 (National Fire Protection Association, Batterymarch Park, Quincy, MA 02169). For complete coverage in residential units, smoke detectors should be installed in all rooms, halls, storage areas, basements and attics in each family living unit. Minimum coverage is one detector on each floor and one in each sleeping area. For maximum protection, a smoke detector should be located outside primary sleeping areas or on each level of your home. Here are a few useful tips for you:

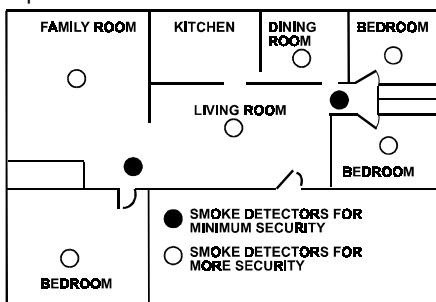
- Install a smoke detector in the hallway outside every separate bedroom area, as in Figure 8. Two detectors are required in homes with two bedroom areas, as in Figure 9.
- Install a smoke detector on every floor of a multi-floor home or apartment, as shown in Figure 10.
- Install a minimum of two detectors in any household.
- Install a smoke detector inside every bedroom.
- Install smoke detectors at both ends of a bedroom hallway if the hallway is more than 12 meters (40 feet) long.



● SMOKE DETECTORS FOR MINIMUM PROTECTION
○ SMOKE DETECTORS FOR MORE PROTECTION

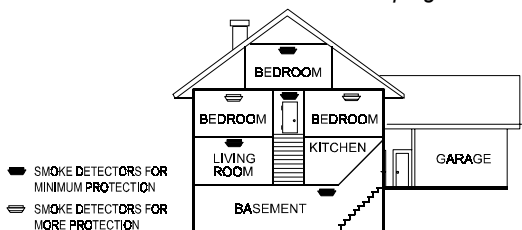
Figure 8. Locations for Placing Smoke Detectors in a Single Residence with only One Sleeping Area

- Install a smoke detector inside every room where one sleeps with the door partly or completely closed, since smoke could be blocked by the closed door and a hallway alarm may not wake up the sleeper if the door is closed.



● SMOKE DETECTORS FOR MINIMUM SECURITY
○ SMOKE DETECTORS FOR MORE SECURITY

Figure 9. Locations for Placing Smoke Detectors in Single-Floor Residence with More than One Sleeping Area.



● SMOKE DETECTORS FOR MINIMUM PROTECTION
○ SMOKE DETECTORS FOR MORE PROTECTION

Figure 10. Placing Smoke Detectors in a Multi-Floor Residence

- Install basement detectors at the bottom of the basement stairwell.
- Install second-floor detectors at the top of the first-to-second floor stairwell.
- Be sure no door or other obstruction blocks the path of smoke to the detector.
- Install additional detectors in your living room, dining room, family room, attic, utility and storage areas.
- Install smoke detectors as close to the center of the ceiling as possible. If this is not practical, put the detector on the ceiling, at least 10 cm (4 inches) away from any wall or corner, as shown in Figure 11.

- If ceiling mounting is not possible and wall mounting is permitted by your local and state codes, put wall-mounted detectors between 10 - 15 cm (4 - 6 inches) from the ceiling, also see Figure 11.
- If some of your rooms have sloped, peaked, or gabled ceilings, try to mount detectors 0.9 meter (3 feet) measured horizontally from the highest point of the ceiling as shown in Figure 12.

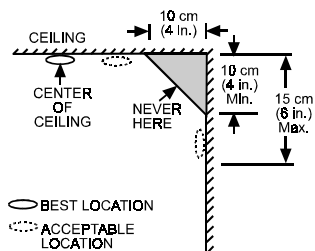


Figure 11. Recommended Best and Acceptable Locations to Mount Smoke Detectors



CAUTION (As required by the California State Fire Marshall)

"Early warning fire detection is best achieved by the installation of fire detection equipment in all rooms and areas of the household as follows:

- (1) A smoke detector installed in each separate sleeping area (in the vicinity, but outside the bedrooms), and (2) Heat or smoke detectors in the living rooms, dining rooms, bedrooms, kitchens, hallways, attics, furnace rooms, closets, utility and storage rooms, basements and attached garages."

For your information, NFPA Standard 74, Section 2-4 reads as follows:

"2-4.1.1 Smoke detectors shall be installed outside each separate sleeping area in the immediate vicinity of the bedrooms and on each additional story of the family living unit including basements and excluding crawl spaces and unfinished attics.

The provisions of 2-4.1.1 represent the minimum number of detectors required by this standard. It is recommended that the householder consider the use of additional smoke detectors for increased protection for those areas separated by a door from the areas protected by the required smoke detectors under 2-4.1.1 above. The recommended additional areas are living room, dining room, bedroom(s), kitchen, attic (finished or unfinished), furnace rooms, utility room, basement, integral or attached garage, and hallways not included in 2-4.1.1 above. However, the use of additional detectors remains the option of the householder." We recommend complete coverage and use of additional smoke detectors.

4.2 Where to Install Smoke Detectors in Mobile Homes and RVs

Mobile homes and RVs built after about 1978 were designed and insulated to be energy-efficient. In mobile homes and RVs built after 1978, smoke detectors should be installed as described above. Older mobile homes and RVs may have little or no insulation compared to current standards. Outside walls and roofs are often made of non-insulated metal, which can transfer thermal energy flow from outdoors. This makes the air right next to them hotter or colder than the rest of the inside air. These layers of hotter or colder air can keep smoke from reaching a smoke detector. Therefore, install smoke detectors in such units only on inside walls. Place them 10 ~ 15 cm (4 to 6 inches) from the ceiling. If you are not sure how much insulation is in your mobile home or RV, then install the detector on an inside wall. If the walls or ceiling are unusually hot or cold, then install the detector on an inside wall. Install one detector as close to the sleeping area as possible for minimum security, or install one detector in each room for more security. Before you install any detector, please read the following section on "Where Not to Install Smoke Detectors."

4.3 Where Not to Install Smoke Detectors

False alarms occur when smoke detectors are installed where they will not work properly. To avoid false alarms, do not install smoke detectors in the following situations:

- Combustion particles are by-products of something burning. Do not install smoke detectors in or near areas where combustion particles are present, such as kitchens with few windows or poor ventilation, garages where there may be vehicle exhaust, near furnaces, hot water heaters and space heaters.
- Do not install smoke detectors less than 6 meters (20 feet) away from places where combustion particles are normally present, like kitchens. If a 20-foot distance is not possible, e.g. in a mobile home, try to install the detector as far away from the combustion particles as possible, preferably on the wall. To prevent false alarms, provide good ventilation in such places.

IMPORTANT: Never try to avoid false alarms by disabling the detector.

- Do not mount smoke detectors in the path of fresh air intake. The flow of fresh air in and out can drive smoke away from the smoke detector; thus reducing its efficiency. Figure 13 indicates the correct and incorrect locations concerning this problem.
- Near pain thinner fumes.
- In close proximity to an automobile exhaust pipe; this will damage the detector.
- In damp or very humid areas or near bathrooms with showers. Moisture in humid air can enter the sensing chamber, then turns into droplets upon cooling, which can cause false alarms. Install smoke detectors at least 3 meters (10 feet) away from bathrooms.
- In very cold or very hot areas, including unheated buildings or outdoor rooms. If the temperature goes above or below the operating range of smoke detector, it will not work properly. The temperature range for your smoke detector is 4°C to 38°C (40°F to 100°F).
- In very dusty or dirty areas, dirt and dust can build up on the detector's sensing chamber, to make it overly sensitive.

Additionally, dust or dirt can block openings to the sensing chamber and keep the detector from sensing smoke.

- Near fresh air vents or very drafty areas like air conditioners, heaters or fans. Fresh air vents and drafts can drive smoke away from smoke detectors.
- Dead air spaces are often at the top of a peaked roof, or in the corners between ceilings and walls. Dead air may prevent smoke from reaching a detector. See Figures 11 and 12 for recommended mounting locations.
- In insect-infested areas. If insects enter a detector's sensing chamber, they may cause a false alarm. Where bugs are a problem, get rid of them before putting up a detector.
- Near fluorescent lights, electrical "noise" from fluorescent lights may cause false alarms. Install smoke detectors at least 1.5 meters (5 feet) from such lights.

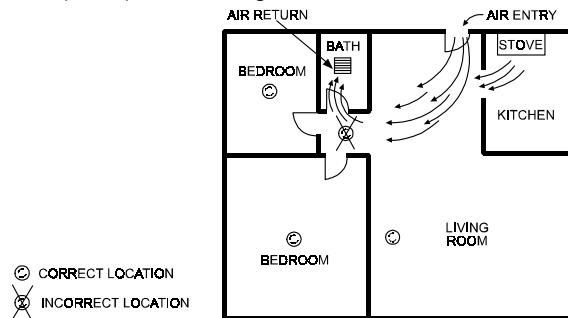


Figure 13. Recommended Smoke Detector Locations to Avoid Air Streams with Combustion Particles

WARNING: Never remove batteries to stop a false alarm. Open a window or fan the air around the detector to get rid of the smoke. The alarm will turn itself off when the smoke is gone. If false alarms persist, attempt to clean the detector as described in this manual.

WARNING: Do not stand close to the detector when the alarm is sounding. The alarm is loud in order to wake you in an emergency. Too much exposure to the horn at close range may be harmful to your hearing.

5. TAKING CARE OF THE MCT-425

5.1 Battery Replacement

The MCT-425 is designed to be as maintenance-free as possible. To keep the smoke detector in good working order, you must test it weekly, as instructed in Para. 6.1 below.

Make sure to test detectors mounted within RVs in storage before each trip, and at least once each week during use.

Make it a rule to replace the detector's battery (alkaline) once a year even if there is no indication that the battery is weak. Also be sure to replace it immediately upon reception of a low battery message via your control panel.

If you disregard this message, an audible reminder in the form of once-per-minute "beep" will sound after a few days. The low-battery "beep" should last at least 30 days before the battery dies out completely.

NOTE: For best performance, use only alkaline or lithium batteries as replacement batteries. Carbon zinc batteries are not acceptable. Alkaline batteries can be purchased at any retail store that sells batteries. The following alkaline 9V batteries are acceptable for proper operation: Eveready #522, #1222, #216; Duracell #MN1604; or Gold Peak #1604P, #1604S.

Replace the battery as follows:

- A. Grasp the detector's body with your hands, rotate it slightly counterclockwise and pull it off the wall-mounted bracket.
- B. Turn the unit over and remove the screw from the battery cover (see Figure 3).
- C. Remove the old battery from the snap-on battery clip, then connect the new battery, paying close attention to correct polarity. Then, push the battery into its holder.
- D. Close the cover, re-insert the screw, and test the unit as instructed in Para. 2.6A.
- E. Re-mount the unit on the bracket as instructed in Para. 2.6B.

5.2 Cleaning

It is necessary to maintain the detector frequently to ensure it working properly. Follow these tips for taking care of your detector:

- Use a vacuum cleaner to clean the air vents occasionally to keep them free of dust. (Before cleaning your unit, unplug it from the wall outlet.)
- Push the Test button on your detector to test its operating function weekly.

NOTE: If false alarms keep occurring, check whether the detector's location is adequate (see Para. 4.1 and 4.2). Relocate the unit if it is not located properly. Clean as described above.

6. ADDITIONAL ADVICE

6.1 Routine Testing

The detector should be tested weekly and also whenever you suspect that it does not go into alarm. Push the test button firmly with your finger until the horn sounds (it may take up to 20 seconds). Also verify that the control panel responds to the transmitted fire alarm. If the detector fails, have it repaired or replaced immediately, to ensure that it works properly.

WARNING: Never use an open flame of any kind to test your detector. You may set fire to damage the detector as well as your home. The built-in test switch accurately tests all detector functions, as required by Underwriters' Laboratories. This is the only correct way to test the unit.

NOTE: If the alarm horn produces a loud continuous sound and the red LED flashes when you are not testing the unit, this means the detector has sensed smoke or combustion particles in the air. Verify that the alarm is a result of a possible serious situation, which requires your immediate attention.

- The alarm could be caused by a false situation. Cooking smoke or a dusty furnace, sometimes called "friendly fires" can cause the alarm to sound. If this happens, open a window or fan the air away to remove the smoke or dust. The alarm will turn off as soon as the air is completely clear.

CAUTION: Do not disconnect the battery from the detector. This will remove your protection from fires.

- If the alarm horn begins to beep once a minute, this signal means that the detector's battery is weak. Install a new battery immediately. Keep fresh batteries on hand for this purpose.

6.2 Tips to Enhance Your Protection From Fires

Putting up smoke detectors is only one step in protecting your family from fires. You must also reduce the chances of fires starting in your home. You must also increase your chances of escaping safely if one does start. To have a good fire safety program you must apply the following tips to enhance your family's protection from fires:

- A. Install smoke detectors properly. Carefully follow all the instructions in this manual. Keep your smoke detectors clean and test them every week.
- B. Remember that detectors that do not work will not alert you. Replace your smoke detectors immediately if they are not working properly.
- C. Follow fire **safety** rules, and prevent hazardous situations:
 - Use smoking materials properly. Never smoke in bed.
 - Keep matches and cigarette lighters away from children.
 - Store flammable materials in proper containers. Never use them near open flame or sparks.
 - Keep electrical appliances in good condition. Do not overload electrical circuits.
 - Keep stoves, fireplaces, chimneys, and barbecue grills grease free. Make sure they are properly installed and away from any combustible materials.
 - Keep portable heaters and open flames such as candles away from combustible materials.

- Do not allow rubbish to accumulate.
- Keep a supply of extra batteries on hand for your battery powered smoke detectors.

D. Develop a family escape plan and practice it with your entire family. Be sure to include small children in your practice.

- Draw a floor plan of your home, and find two ways to exit from each room. There should be one way to get out of each bedroom without opening the door.
- Explain to children what the smoke detector alarm signal means. Teach them that they must be prepared to leave the home by themselves if necessary. Show them how to check to see if doors are hot before opening them. Show them how to stay close to the floor and crawl if necessary. Show them how to use the alternate exit if the door is hot and should not be opened.
- Decide on a meeting place which has a safe distance from your house. Make sure that all your children understand that they should go and wait for you there if there is a fire.
- Hold fire drills at least every 6 months, making sure that everyone, even small children, knows what to do to escape safely.
- Know where to go to call the Fire Department outside your home.
- Provide emergency equipment, such as fire extinguishers, and teach your family to use this equipment properly.

6.3 More Tips on How to Face a Fire at Home

If you have made an escape plan and practiced it with your family, their chances of escaping safely are increased. Go over the following rules with your children when you have fire drills. This will help everyone remember the rules in a real emergency.

- A. Don't panic and stay calm. Your safe escape may depend on thinking clearly and remembering what you have practiced.
- B. Get out of the house as quickly as possible. Follow a planned escape route. Do not stop to collect anything or to get dressed.
- C. Feel the doors to see if they are hot. If they are not, open them carefully. Do not open a door if it is hot. Use an alternate escape route.
- D. Stay close to the floor. Smoke and hot gases rise.
- E. Cover your nose and mouth with a wet or damp cloth. Take short, shallow breaths.
- F. Keep doors and windows closed. Open them only if you have to in order to escape.
- G. Meet at your planned meeting place after leaving the house.
- H. Call the Fire Department as soon as possible from outside your house. Give the address and your name.
- I. Never go back inside a burning building. Contact your local Fire Department. They will give you more ideas about how to make your home safer from fires and how to plan your family's escape.

7. STATEMENTS OF COMPLIANCE

The 315 MHz version of this device complies with Part 15 of the FCC Rules. Operation is subject to the following two conditions: (1) This device may not cause harmful interference, and (2) This device must accept any interference received, including interference that may cause undesired operation.

WARNING! Changes or modifications to this unit not expressly approved by the party responsible for compliance could void the user's authority to operate the equipment

The digital circuit of this device has been tested and found to comply with the limits for a Class B digital device, pursuant to Part 15 of the FCC Rules. These limits are designed to provide reasonable protection against harmful interference in residential installations.

This equipment generates, uses and can radiate radio frequency energy and, if not installed and used in accordance with the instructions, may cause harmful interference to radio and television reception. However, there is no guarantee that interference will not occur in a particular installation. If this device does cause such interference, which can be verified by turning the device off and on, the user is encouraged to eliminate the interference by one or more of the following measures:

- Re-orient or re-locate the receiving antenna.
- Increase the distance between the device and the receiver.
- Connect the device to an outlet on a circuit different from the one which supplies power to the receiver.
- Consult the dealer or an experienced radio/TV technician.

This device complies with the essential requirements and provisions of Directive 1999/5/EC of the European Parliament and of the Council of 9 March 1999 on radio and telecommunications terminal equipment.

Frequency Allocations for Wireless Devices in European (EU) Countries

- 433.92 MHz has no restriction in any EU member state.
- 315 MHz is not allowed in any EU member state
- 868.95 MHz (wide band) is allowed in all EU member states.
- 869.2625 MHz (narrow band) is not restricted in any EU member state.

WARRANTY

Visonic Ltd. and/or its subsidiaries and its affiliates ("the Manufacturer") warrants its products hereinafter referred to as "the Product" or "Products" to be in conformance with its own plans and specifications and to be free of defects in materials and workmanship under normal use and service for a period of twelve months from the date of shipment by the Manufacturer. The Manufacturer's obligations shall be limited within the warranty period, at its option, to repair or replace the product or any part thereof. The Manufacturer shall not be responsible for dismantling and/or reinstallation charges. To exercise the warranty the product must be returned to the Manufacturer freight prepaid and insured.

This warranty does not apply in the following cases: improper installation, misuse, failure to follow installation and operating instructions, alteration, abuse, accident or tampering, and repair by anyone other than the Manufacturer.

This warranty is exclusive and expressly in lieu of all other warranties, obligations or liabilities, whether written, oral, express or implied, including any warranty of merchantability or fitness for a particular purpose, or otherwise. In no case shall the Manufacturer be liable to anyone for any consequential or incidental damages for breach of this warranty or any other warranties whatsoever, as aforesaid.

This warranty shall not be modified, varied or extended, and the Manufacturer does not authorize any person to act on its behalf in the modification, variation or extension of this warranty. This warranty shall apply to the Product only. All products, accessories or attachments of others used in conjunction with the Product, including batteries, shall be covered solely by their own warranty, if any. The Manufacturer shall not be liable for any damage or loss whatsoever, whether directly, indirectly, incidentally, consequentially or otherwise, caused by the malfunction of the Product due to products, accessories, or attachments of others, including batteries, used in conjunction with the Products.

The Manufacturer does not represent that its Product may not be compromised and/or circumvented, or that the Product will prevent any death, personal and/or bodily injury and/or damage to property resulting from burglary, robbery, fire or otherwise, or that the Product will in all cases provide adequate warning or protection. User understands that a property installed and maintained alarm may only reduce the risk of events such as burglary, robbery, and fire without warning, but it is not insurance or a guarantee that such will not occur or that there will be no death, personal damage and/or damage to property as a result.

The Manufacturer shall have no liability for any death, personal and/or bodily injury and/or damage to property or other loss whether direct, indirect, incidental, consequential or otherwise, based on a claim that the Product failed to function. However, if the Manufacturer is held liable, whether directly or indirectly, for any loss or damage arising under this limited warranty or otherwise, regardless of cause or origin, the Manufacturer's maximum liability shall not in any case exceed the purchase price of the Product, which shall be fixed as liquidated damages and not as a penalty, and shall be the complete and exclusive remedy against the Manufacturer.

Warning: The user should follow the installation and operation instructions and among other things test the Product and the whole system at least once a week. For various reasons, including, but not limited to, changes in environmental conditions, electric or electronic disruptions and tampering, the Product may not perform as expected. The user is advised to take all necessary precautions for his/her safety and the protection of his/her property.

6/91



VISONIC LTD. (ISRAEL): P.O.B 22020 TEL-AVIV 61220 ISRAEL. PHONE: (972-3) 645-6789, FAX: (972-3) 645-6788
VISONIC INC. (U.S.A.): 10 NORTHWOOD DRIVE, BLOOMFIELD CT. 06002-1911. PHONE: (860) 243-0833, (800) 223-0020 FAX: (860) 242-8094
VISONIC LTD. (UK): FRASER ROAD, PRIORY BUSINESS PARK, BEDFORD MK44 3WH. PHONE: (0870) 7300800 FAX: (0870) 7300801
INTERNET: www.visonic.com

©VISONIC LTD. 2003 MCT-425 DE3642- (REV. 0, 2/03)



MADE IN
ISRAEL