



INNOVAGE™  
PRODUCTS

# Mini Digital Camera with Accessory Kit



OPERATION MANUAL

# 1. INTRODUCTION

## 1.1 Introduction of the Mini Digital Camera

Thank you for purchasing the Mini Digital Camera. It not only can take photos but it also has built-in PC camera functions. If you want the photos in the camera to be downloaded into your computer, you are only required to connect the USB cable to your computer and your camera.

Your camera comes with a key chain strap so you can easily attach the digital camera to your car/home/work keys and take pictures anywhere. The Mini Digital Camera is made of state of the art lightweight material making it one of the most convenient cameras available.

## 1.2. Accessories

- 1) Digital Camera
- 2) USB Cable
- 3) Photo Processing Software
- 4) Instruction Manual
- 5) Key Chain
- 6) User License Agreement
- 7) AAA Battery
- 8) Protective Carrying Case

## 1.3. Part Names

Button Explanation:

SNAP: Power Off Button, Snap Button

MODE: Mode Button, Power On Button

## 1.4. LCD Panel

- 20* Normal mode
- 0F* Power off mode
- St* Self-Timer shot mode
- ct* Continuous shot mode
- CP* Compressed mode
- nP* Non-compressed mode
- Rl* Video function mode
- CL* Delete last photo

- CR* Delete all photos
- Hr* High-resolution format
- Lr* Low-resolution format
- F5* 50Hz~220v Voltage-50Hz is for China
- F6* 60Hz~110v Voltage-60Hz is for European and American countries

## 1.5 Specification

- Storage memory size: 16Mb SDRAM
- Photos: non-compressed
  - High Resolution (352\*288): about 20 pictures
  - Low Resolution (176\*144): about 81 pictures
- Under compressed
  - High Resolution (352\*288): about 60 pictures
  - Low Resolution (176\*144): about 243 pictures
- Aperture: 2.8
- Exposure mode: Automatic
- White balance: Automatic
- Self-timer delay: 10 seconds
- Communication port: USB standard port
- Image Sensor: 1/4 inch CMOS
- Image Specification: 352\*288 pixel (High Resolution)  
176\*144 pixel (Low Resolution)
- Mode: Single/Self-timer / continuous shot /set up AVI files (352\*288/  
176\*144 pixel AVI format)
- Shutter speed: 1/60 second-1/1500 second
- LCD panel: 2 digit displays
- Frame rate: 12 frames per second  
6-8 frames per second (in video mode / in CE mode)
- Power supply and management:
  - A ) One piece of AAA alkaline battery
  - B ) Automatically power off in 30 seconds idle
  - C ) 10 hours continuous photo taking
  - D ) Low battery alert "Lo"
- Weight : about 27g (without battery)
- Dimensions: 58.7 mm X 41.7mm X 15mm

- Operation System: WIN98/WIN98SE/2000/ME/XP

## 2. How to use the Mini Digital Camera

### 2.1 Power On/Off

- Press **MODE** button when the camera is off. LCD panel shows "Hr" or "Lr", and then shows "20". "Hr" and "Lr" stands for high resolution and low resolution respectively and "20" is the number of photos can be taken. When the Mini digital camera is idle for 30 seconds, it will automatically shut off .
- Press **MODE** button , LCD panel shows icon "0F", then press **SNAP Button** to shut off the digital camera.

### 2.2 Normal Shot Mode

- Press **MODE** button, LCD display normal mode.
- Press **SNAP Button**, a short sound from the buzzer shows the completion of photo taking and the figure on LCD will automatically reduce .
- When LCD displays "00" memory is full.
- When press **SNAP Button**, if light is not enough, you will hear 'beep , beep, beep' sound, and the figure on LCD remains unchanged.
- The suitable distance between the eyes and the viewfinder is 30cm.

### 2.3 Self-timer Shot Mode

- Press **MODE** Button to choose self-timer mode "5t".
- Press **SNAP Button** to start self-timer, self-timer will delay 10 seconds. It finishes with a 'beep' sound.
- After the completion of the self-timer, the figure on LCD will automatically decrease by one and automatically return to Normal Shot Mode.

### 2.4 Continuous shot mode

- Press **MODE** Button to choose continuous mode "ct".
- Press **SNAP Button** to start continuous shot. It will continuously take pictures until the **SNAP Button** is released or the number of photos reaches the minimum value "00".

### 2.5 AVI Function Mode

- Press **MODE** Button to choose video function mode "AV".
- Press and hold down the **SNAP Button** to record.
- Recording will stop once the **SNAP Button** is released or the number of photos shows the minimum value "00".

Note : Please move slowly and steadily when taking video.

### 3. Function Operation

#### 3.1 Delete single photo ( Only delete the last photo)

- Press **MODE Button**,LCD panel shows icon "CL"
- Press **SNAP Button** to choose and LCD will flash,then press **SNAP Button** again to confirm. After the last photo is deleted. LCD shows the number of photos(could not be taken) increasing by one.

#### 3.2 Delete all photos

- Press **MODE Button**,LCD shows icon "CR":
- Press **SNAP Button** to choose and LCD will flash,then press **SNAP Button** again to confirm, and all photos are deleted.

#### 3.3 High Resolution

- Press **MODE Button**, LCD shows icon "Hr" This will allow you to take (20) twenty high resolution pictures
- Press **SNAP Button** to confirm,LCD shows "Hr" when the camera is turned on in this mode.

#### 3.4 Low Resolution

- Press **MODE Button**, LCD shows icon "Lr" This will allow you to take (81) eighty one low resolution pictures
- Press **SNAP Button** to confirm,LCD shows icon "Lr" when the camera is turned on in this mode.

#### 3.5 Compressed mode - This will allow you to take more pictures, (60) sixty high resolution and (243) two hundred and forty three low resolution pictures but you will experience a decrease in the quality of the images

- Press **MODE Button**,LCD shows icon "CP":
- Press **SNAP Button** to confirm.

#### 3.6 Non-compressed mode- This will allow you to take fewer pictures (20) twenty high resolution pictures and (81) eighty one low resolution pictures but the quality of the pictures will be better than when in Compressed Mode.

- Press **MODE Button**,LCD shows icon "nP"
- Press **Shutter Button** to confirm.

#### 3.7 50/60Hz Option

- Press **MODE Button** until display changes to " F5 "
- Press **SNAP Button** to confirm 50Hz.
- Press **MODE Button** until display changes to " F6 "

- Press **SNAP Button** to confirm 60Hz.

Remark:

50Hz/60Hz is the AC voltage/frequency of different regions and countries.  
50Hz for China, 60Hz for European and American countries.

## 4. Installation and Application of the software

### 4.1 Software installation

- Please do not connect the USB cable until the software is completely installed. Insert CD into CD-ROM drive. The installation wizard should automatically start. (If the wizard does not automatically start go to START-RUN-select your CD drive-Choose the file Setup.exe) then follow the onscreen instructions, once installation is completed restart your PC.

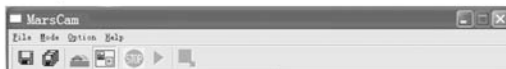









Restart the computer after finishing the installation.

### 4.2 Software Uninstall

The software can be uninstalled by clicking the menu item of "Uninstall", or selecting the "Camera Driver" item in the "Add/Remove Programs" applet of control panel and remove it.

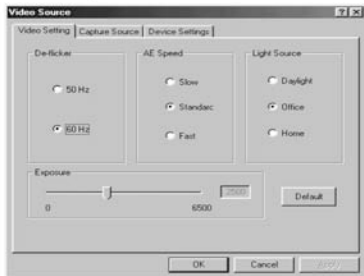
### 4.3 Main Explanation of the Software' Menu



-  Save Active Item
-  Save All Items
-  Stop
-  Preview
-  Capture Single Frame
-  PC-Camera
-  Photo Album Mode

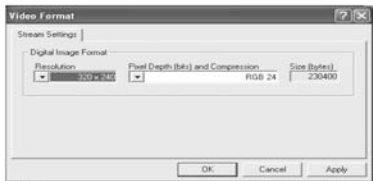
#### 4.4 Video Parameter setting

Choose the video color space and video size




- De-flicker: Set AC frequency of fluorescent light
- AE Speed: Set the frame rate to capture video
- Light Source: Select brightness environment
- Exposure: Set video exposure
- Capture Source: Select Capture device
- Device Setting: Adjust various video settings, such as white balance, etc.
- Video Format

Choose the video color space and video size



#### 4.5 Download File

Connect the mini digital camera to your computer via USB cable, then double click shortcut  on the computer desk, the following figures will pop up:





Click "YES", all photos will be transferred to your PC.

#### 4.6 Browse File

Select the photo in application window on the right side, and then this photo will be shown in the application window on the left side as actual size.

#### 4.7 Save File

- Press button  to save one file which you have selected
- Press button  to save all files

#### 4.8 Play AVI File




After downloading video, below image shows (Download method is the same as that of photos).




Click AVI play button to start (Computer should install multi-media software, e.g. Windows Media Player or Real Player Basic AVI play button).

#### 4.9 PC-CAMERA

Connect the mini digital camera with your computer via USB cable, then double click the shortcut  on your computer desk. The following interface will appear:



- Press button  to work as PC-Camera

- Press button  to stop PC camera
- Press button  to start preview video image
- Press button  to capture the current frame

## 5 Photo Impression 4.0



Through the Photo Impression 4.0 you can select to download photos and edit photos.

## 6. **SAFETY NOTICE:**

- 1) **Do not expose to water and humidity.**
- 2) **Do not take the batteries out before downloading pictures, you will lose all pictures.**