

ViviCam 46 Digital Camera

User Manual



Vivitar[®]
we make it easy[™]

© 2009-2012 Sakar International, Inc. All rights reserved.

Windows and the Windows logo are registered trademarks of Microsoft Corporation.

All other trademarks are the property of their respective companies.

Table of Contents

Introduction	2
What's Included.....	2
Parts of the Camera	3
Initial Camera Setup.....	4
Main Camera Modes	7
Camera Technical Specifications.....	8
Computer System Requirements	9
Powering the Camera On/Off	10
Camera Mode	11
Video Mode	15
Playback Mode.....	17
Installing the Software	20
Connecting the Camera to the Computer.....	21
Getting Photos and Videos from your Camera to Your Computer	22
Get Started!	23
Transferring Images from my Camera to my Computer Manually	23
Camera Maintenance	25
Sakar Warranty Card.....	25
Technical Support.....	26
Troubleshooting.....	26

Introduction

Thank you for purchasing this camera. Everything you need to take quality digital photos and videos is included with your camera.

Vivitar makes capturing those special moments as easy as possible.

Please read this manual carefully first in order to get the most out of your digital camera.

Note: Your camera needs an SD Memory card (up to 32GB) for normal use.

SD Memory cards are not included and need to be purchased separately.

What's Included

1. Digital Camera
2. USB cable
3. Vivitar Experience Image Manager
Software Installation CD
4. Wrist Strap



Note: SD Memory Card and batteries not included.

Parts of the Camera



- | | |
|-------------------|---------------------------|
| 1. Power Button | 8. Down / Playback Button |
| 2. Shutter Button | 9. Up Button |
| 3. LCD Screen | 10. SD Memory Card Slot |
| 4. LED | 11. Wrist Strap Connector |
| 5. W / Zoom Out | 12. USB Port |
| 6. T / Zoom In | 13. Tripod Socket |
| 7. MENU Button | 14. Digital Lens |

Note: The battery compartment is located beneath the front cover of the camera.

Initial Camera Setup

Installing the Batteries



- Slide off the front cover and insert 2 x AAA (1.5V) batteries. Alkaline batteries recommended (not included).

Installing the Memory Card



- SD Memory card (up to 32GB) needed for normal use.

Turning On the Camera



Using the Camera



Powering the Camera ON

1) Batteries

Slide the front cover of your camera towards the right to reveal and open the battery compartment.

Make sure to properly insert the batteries into your digital camera, according to the polarity shown inside the battery compartment.




Use 2 x AAA (1.5V) batteries. Alkaline batteries are recommended. (Batteries not included.)

Place the camera front cover on the front of the camera and slide the camera front cover towards the left to securely close the cover back into place. A click will be heard once the camera front cover has been locked into place.



Note:

- Remove the batteries from the camera when not in use for an extended period.
- Do not mix alkaline and non-alkaline batteries.
- Some features will not work if the battery power level is low.
- When the battery power is low the battery icon turns red and the camera will automatically turn off a few seconds later.
- Rechargeable batteries not recommended.
- The energy status of the power is displayed on LCD as shown below:

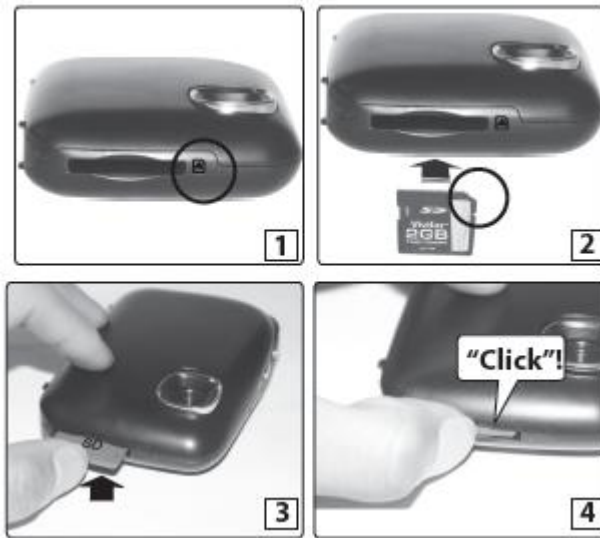
 *Full battery power*  *Medium battery power*  *Low battery power*

2) SD Card

Make sure an SD card has been properly inserted into your camera. (SD card not included.)

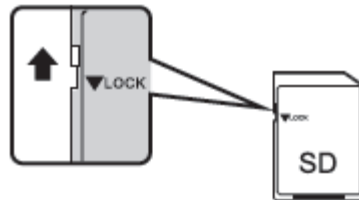
To properly insert the SD Card:

Push the SD card into the slot in the direction shown on the camera (see SD icon by the SD card slot). Push the SD card until you hear a slight clicking sound. This indicates the SD card has been inserted correctly.




Note:

- After the camera is powered on, an SD icon will appear on the LCD display. If you do not see the SD icon on the display, please check if the card was inserted properly.
- Make sure the SD card is not locked (check the lock switch on the side of the SD card). If the SD card is locked this will prevent the camera from saving captured photos to the SD card.



3) Power On

Press the  **POWER** button to turn on the camera.

Main Camera Modes

Your camera has different modes for the various camera functions.

You can switch modes by pressing the **MENU** button on your camera after the camera has been powered ON.



Photo Capture Mode

Use this mode to capture pictures with your camera.

This is the default mode when the camera is powered ON.

To take a picture, aim your camera as desired and press the **Shutter** button.

The picture will be automatically saved to your camera's memory card. To access the various menus for the Photo Capture Mode, press the **MENU** button.



Video Capture Mode

Use this mode to capture videos with your digital camera.

After turning on your camera, press the **MENU** button to open the 'MODE' and select 'AVI'.

To take a video, aim your camera as desired and press the **Shutter** button to start the record. A red record indicator will appear on the LCD screen while record is in progress. To stop the record, press the **Shutter** button again. The video will be automatically saved to your camera's memory card. To access the various menus for the Video Capture Mode, press the **MENU** button.



Playback Mode (Photos & Videos)

Use this mode to view and manage the photos and videos on your camera.

After turning on your camera, press the **PLAYBACK** button to open the Playback mode for photos and videos. You can scroll through the photos and videos that you've previously taken to view, edit or delete them as desired.

To access the various menus for the Playback mode for photos and videos, press the **MENU** button while in the Playback mode.

Camera Technical Specifications

Image Sensor	CMOS
Image Resolution	2304X1728(4 M) / 2048x1536(3M) / 1920x1080(2M-HD) / 640x480(VGA)
Video Resolution	640x480 VGA, 320x240 QVGA
File Format	JPEG (Photo) /AVI (Video)
Internal Memory	1 Test Photo Use Only
External Memory	SD Card (up to 32GB)
LCD Display	1.5”TFT
Lens	f=7.7 mm F3.0
Zoom	4X Digital Zoom
Language	English, French, Spanish, Portuguese, German, Dutch, Italian, Russian, Turkish
Print	Yes
Exposure	Auto
White Balance	Auto
ISO	Auto
Scene	Auto
Auto Power Off	60 second default
Self-Timer	10 seconds, Off
Interface	USB 2.0
System Requirements	Windows XP (SP 3), Vista (SP1) and 7 ; Mac OSX v10.5.x and above
Battery	2 * AAA (1.5V) batteries
Working Temperature	0~40°C

Computer System Requirements

WINDOWS OS

To be able to download photos and videos to your PC using the Vivitar Experience Image Manager Software, you will need the following minimum configuration:

- Microsoft® Windows XP with Service Pack 3, Windows Vista with Service Pack 1 or Windows 7
- Pentium® 4 processor (or above)
- 1 GB of RAM, with 250 MB of free hard disk space
- 16-bit Color monitor, 1024 X 768 recommended screen resolution
- CD-ROM Drive
- QuickTime® 6 or higher
- Microsoft® Internet Explorer 7 or higher
- Windows Media Player 10 or higher
- DirectX 9 or higher
- Internet connection required

MACINTOSH OS

To be able to download photos and videos to your Macintosh using the Vivitar Experience Image Manager Software, you will need the following minimum configuration:

- Intel processor running Mac OS X v10.5.x or later
- 1 GB RAM, 250 MB free hard disk space
- Display: 1024 x 768 or higher-resolution monitor
- QuickTime® 6 or higher
- CD-ROM Drive
- Internet connection required

Powering the Camera On/Off

- Make sure the batteries have been inserted properly into your digital camera. If your camera comes with a rechargeable lithium battery, make sure it is fully charged before the first use.
- Make sure an SD card has been inserted into your camera.
(SD card up to 32GB - SD Card not included)
Please see **Initial Camera Setup** for more information.

Powering the camera ON

Press the  **Power** button to turn your camera ON.

- After powering on, the camera emits a sound and the LED light turns on briefly.
- The LCD screen turns on with your camera in Photo Capture mode to start.

Powering the camera OFF

While the camera is on, you can press the  **Power** button again at any point to turn your camera OFF.

- A “Goodbye” screen appears and then the camera will power off completely.

Note: Your digital camera also has an Auto Power Off feature that will automatically turn off your camera after 1 minute.

Photo Capture Mode

The Photo Capture mode allows you to capture pictures with your digital camera.

This is the default mode when the camera is powered on.

Taking photos

- 1) Power on your camera. The default mode is Camera mode.
- 2) Hold the camera steady and compose your photo using the LCD screen.
- 3) Press the **Shutter** button and wait a moment for the photo to be taken.

If you have changed the camera mode and would like to return to the Photo Capture Mode:

- 1) Press the **Menu** button.
- 2) Press the **Up/Down** button and select MODE.
- 3) Press the **Shutter** button.
- 4) Press the **Up/Down** button and select SINGLE.
- 5) Press the **Shutter** button again to confirm. You are now in default camera mode.

Note: When the internal memory is full, the LCD screen will display “Memory Full! Insert a SD Memory Card to Transfer and Take More Photos!” If you attempt to take photos or videos when the camera’s internal memory is full, the camera will beep continuously. Please download the test images to your computer using the Vivitar Experience Image Manager software as described below in the section “Transfer photos and videos to your computer” as soon as possible or insert an SD memory card in order to take more images!

Digital Zoom function

You can magnify your subject using the digital zoom.

Use the **T** and **W** buttons to adjust the zoom.


- 1) Press the **T** button to zoom in on your subject.
- 2) Press the **W** button to zoom back out.

Self Timer

The Self Timer menu allows you to set a delay between the time that the camera's Shutter button is pressed and the actual capture of the picture.

This is an optimal feature if you don't just want to take the picture but would also like to be in the picture yourself. Just set the Self Timer delay, press the **Shutter** button on your camera and position yourself in front of the camera as desired.

It is recommended that you use a tripod when you use the Self Timer.

- 1) Press the **Menu** button.
- 2) Press the **Up/Down** button and select MODE.
- 3) Press the **Shutter** button.
- 4) Press the **Up/Down** button and select SELF.
- 5) Press the **Shutter** button again to confirm. An  icon will appear on the top left corner of the LCD.
- 6) Press the **Shutter** button to begin taking the photo. Your camera will emit beeps and after a count-down of 10 seconds the photo will be taken.

Change Image Resolution

The Image Resolution menu allows you to choose the desired size of the images taken by your camera. Keep in mind that images with a higher resolution will also take up more of your camera's memory.

- 1) Press the **Menu** button.
- 2) Press the **Up/Down** button to select the RESOLUTION option.
- 3) Press the **Shutter** button.
- 4) Press the **Up/Down** button to select one of the following resolutions:
4M/3M/2M/VGA.
- 5) Press the **Shutter** button again to confirm your selection.
- 6) The corresponding icon will appear on the LCD screen.

Note:

- Different image resolutions will affect the photo quality. High resolution photos will be of better picture quality and therefore will take up more camera memory capacity than lower resolution photos.
- In order to change the image resolution setting to take high resolution photos, an SD memory card needs to be inserted.

Frequency Settings

The options in the Frequency menu represent the frequency of the electrical current in fluorescent lighting sources in your locale. If your camera is set to a frequency that does not match your country's electric current, you may see waves on the images taken by your camera.

50Hz – UK, Europe and Australia

60Hz – US, Canada and South America

- 1) Press the **Menu** button.
- 2) Press the **Up/Down** button to select the FREQUENCY option.
- 3) Press the **Shutter** button.
- 4) Press the **Up/Down** button to select 50HZ or 60HZ.
- 5) Press the **Shutter** button to confirm.

Anti-Shake Function

The Anti-Shake feature reduces image distortion that can be caused by movement of the camera while capturing the image.

- 1) Press the **Menu** button.
- 2) Press the **Up/Down** button and select the ANTI-SHAKE option.
- 3) Press the **Shutter** button.
- 4) Use the **Up/Down** button to select either:
“ON” to turn the Anti-Shake on.
“OFF” to leave or turn the Anti-Shake off.
- 5) Press the **Shutter** button to confirm.

Language Setting

You can select your camera's language setting by selecting the desired language from the Language menu.

- 1) Press the **Menu** button.
- 2) Press the **Up/Down** button and select LANGUAGE.
- 3) Press the **Shutter** button.
- 4) Press the **Up/Down** button to select from the following options:
English, French, Spanish, Portuguese, German Dutch, Italian, Russian, Turkish
- 5) Press the **Shutter** button to confirm.

Default Setting

Use this menu to reset your camera settings to the original Factory Default Settings.


- 1) Press the **Menu** button.
- 2) Press the **Up/Down** button and select DEFAULT.
- 3) Press the **Shutter** button.
- 4) Press the **Up/Down** button to select "Yes" or "No".
- 5) Press the **Shutter** button to confirm.

Video Capture Mode

The Video Capture Mode allows you to capture videos with your digital camera.

When the camera is first powered ON, the camera will be in Photo Capture Mode.

To set your camera to Video Mode:

- 1) Power on your camera.
- 2) Press the **Menu** button.
- 3) Press the **Up/Down** button to select MODE.
- 4) Press the **Shutter** button.
- 5) Press the **Up/Down** button again to select the AVI option.
- 6) Press the **Shutter** button again to confirm. A video icon  appears on the upper left corner of the LCD.
- 7) Press the **Shutter** button to start shooting the video. The elapsed time appears on the bottom right of the LCD. For the duration of the recording the LED indicator light will continue to flicker and a red indicator blinks on the LCD screen.
- 8) Press the **Shutter** button to stop the recording.
- 9) The video will be saved as an AVI file on the SD memory card.

Note: “Memory Full Insert an SD Memory Card” appears on the LCD screen if you press the Shutter button without having inserting the SD memory card into your camera.

To capture your videos, insert the SD memory card into your camera.

Change Image Resolution

- 1) Select the Video (AVI) Mode option (see steps above for instructions).
- 2) Press the **Menu** button.
- 3) Press the **Up/Down** button to select the RESOLUTION option.
- 4) Press the **Shutter** button.
- 5) Press the **Up/Down** button to select one of the following resolutions:
VGA or QVGA.


- 6) Press the **Shutter** button again to confirm your selection.
- 7) The corresponding icon appears on the LCD screen.

Note:

- Different image resolutions will affect the video quality. High resolution videos will be of better picture quality and therefore will take up more camera memory capacity than lower resolution videos.
- In order to change the image resolution setting to take high resolution photos, an SD memory card needs to be inserted.

Playback Mode

The Playback Mode allows you to review and delete photos and videos that you've already taken with your camera.

- When you first turn on the camera, the camera will be in Photo Capture mode by default.
 - Press the **Playback** button to open the Playback Mode.
 - The latest captured image appears on the LCD screen. If there are no images stored, a message (No File) appears.
- 1) Power on your camera.
 - 2) Press the **Down/Playback** button to enter the Playback Mode.
 - 3) The Playback icon  appears on the upper left corner of the LCD.
 - 4) Press the **Shutter** button to exit to return to Photo Capture Mode.

Preview Photos

To view your captured photos:

- 1) Press the **Down/Playback** button to enter Playback Mode.
- 2) Press the **Up/Down** button to select and view your photos (and videos).
- 3) "JPG" appears on the image if you have selected a photo.
"AVI" appears on the LCD when you select an AVI file.
- 4) To zoom into your selected photo:
Press the **T** button to zoom.
Press the **W** button to zoom out.
Press the **Up/Down** button to move up or down within your zoomed in photo.

Playback Video (AVI) files

- 1) Press the **Down/Playback** button to enter Playback Mode.
- 2) Select an AVI file in your SD memory card by pressing the **Up/Down** button.
- 3) Press the **Menu** button.
- 4) Press the **Up/Down** button to select the PLAY option.

- 5) Press the **Shutter** button to start playing.
- 6) Press the **Shutter** button again to stop playing.

Thumbnail View

Easily navigate and select the image you wish to view by using the Thumbnail View.

The images on your camera will be displayed in a 3 X 3 matrix where you can use the direction buttons to scroll and select images from the thumbnails.

- 1) Press the **W/Zoom Out** button
All the images on your camera will appear in the **Thumbnail View**.
- 2) Use the **Up/Down** button to scroll and select the image you wish to view.
- 3) Press the **Shutter** button to enlarge the image to full size.
- 4) Once the selected video or photo is full size you can play and view the video or magnify the photo.

Delete Photos and/or Videos

You may delete images directly from the memory card on your camera. The images can only be deleted while in the Playback mode.

- 1) In Playback mode, select the image you would like to delete.
- 2) Press the **Menu** button.
- 3) Press the **Up/Down** button to select DELETE.

Press the **Shutter** button and select one of the following options:

“Delete One” in order to delete the selected image (photo or video).

“Delete All” to delete all the files (photos and videos) saved to your SD memory card.

- 1) Press the **Shutter** button.
- 2) Press the **Up/Down** button to select either “Yes” or “No”.
- 3) Press the **Shutter** button again to confirm your choice.

If you choose “Yes” the current file is permanently deleted. This action is irreversible.

Format

You can use the Format Memory Card menu to delete all of the content that is currently on your camera's memory card.

Keep in mind that formatting the memory card will permanently delete all of the content on your camera's memory card.

This option will delete all of the content at one time. If you would like to delete individual images, use the DELETE menu in the camera's Playback mode.

Note: Restoring factory defaults or formatting the camera may result in the loss of data.

Please ensure you have backed up your images before you attempt this.

Please ensure you have backed up all important files before you proceed with formatting.

- 1) Press the Down/Playback button to open the Playback Mode.
- 2) Press the **Menu** button.
- 3) Press the **Up/Down** button to select the FORMAT option.
- 4) Press the **Menu** button.
- 5) Press the **Up/Down** button to select either "Yes" or "No".
- 6) Press the **Shutter** button again to confirm your selection.
- 7) A "No File" message appears on the LCD once the format has completed.

Print your photos

Your camera supports the PictBridge printing function that allows you to print photos any time directly from the camera's memory to a connected printer.

- 1) In the Playback mode press the **Up/Down** button to select a photo you would like to print.
- 2) Press the **Menu** button.
- 3) Press the **Up/Down** button to select the PRINTER option.
- 4) Press the **Shutter** button.
- 5) You will be asked to connect the camera to a printer.
A "Please connect your DSC to printer" message will appear on the LCD.
- 6) Connect your camera to any PictBridge compatible printer to continue with the printing.
- 7) Press the **Shutter** button to start printing the selected photo.

Installing the Software

You must be connected to the internet to install and run the Vivitar Experience Image Manager software.

- 1) Insert the installation CD into your CD-ROM drive. The installation screen should automatically open.



- 2) On PC: The Vivitar Experience Image Manager Installer window appears. If the window does not appear, open the application's CD/DVD drive and click on "Setup.exe" to launch the installer.
- 3) On Macintosh: Click the icon that appears on the desktop to install the Vivitar Experience Image Manager.
- 4) If you do not have internet access at the time of inserting the CD-ROM, connect to the internet and then click the "Install Vivitar Experience Image Manager" button to begin the installation.



Note: If you do not have internet access, you can still download media from the camera. Click the "How to transfer photos and videos from my camera to my computer" button for instructions.

- 5) If you have internet access, the “Choose your language” window opens, choose your language and click “Next” to open the next window.
- 6) Select your camera model from the list and click “Next” to open the next window.
- 7) Click “Next” to confirm your camera model selection and to install the application.
- 8) Please wait while the application is being installed on your computer.
- 9) Please review the license terms.
On PC and Macintosh: Click the “I accept the terms of this license agreement” and then click “Next” to continue.
- 10) On PC only: Let the “Vivitar Experience Image Manager” installer create the folder to where the program will be installed, and then click “Install”.
- 11) Please wait while the application continues the installation process on your computer.
- 12) On PC: Click the “Close” button when the installation is complete.
Click the “Launch Vivitar Experience Image Manager” to open the application.
- 13) On Macintosh: Click the “Quit” button when the installation is complete.
Click the “Launch Vivitar Experience Image Manager” to open the application.
- 14) If you close the application you can run the Vivitar Experience Image Manager from the Programs (PC) or Applications (Mac) menu on your computer.



Connecting the Camera to the Computer

- 1) Use the USB cable that came with your camera to connect your camera to your computer.
- 2) Power the camera ON.
- 3) The first time you connect the device to the computer you will have to wait a few seconds until the computer recognizes the device.

Getting Photos and Videos from your Camera to Your Computer

An SD card needs to be inserted. Do not disconnect the cable during transfer. Doing so will cancel the transfer of any files on their way to your computer.

- 1) Select the “Get Images” button from the Main menu.



- 2) The “Get media from device” window opens.
- 3) You can select to download photos, videos or both.
- 4) Select your camera (removable disk) from the device window. If your camera is the only USB device connected then it will be selected automatically.
- 5) Select a location on the computer where to place the new photo and video files.
- 6) Add the new photo and video files to albums if desired.
- 7) Select to remove the media files from the selected device (removable disk) after the import.
- 8) Click the “Get Media” button to transfer the photos and videos from your camera to your computer.
- 9) A media download progress bar appears on the bottom left showing the number of media files downloading to your computer. A message appears when the download is complete.
- 10) The photo and video files that you selected are now downloaded to your computer to the selected folder and albums ready for your use.

Get Started!

Using the Vivitar Experience Image Manager, you can:

- Upload and manage photos and videos to and from the most popular photo sharing and social networking sites - Facebook, Flickr, Picasa, MySpace, Photobucket, Twitpic, Twitgoo and YouTube
- Seamlessly transfer photos and videos from one social network to another
- Organize your images by creating offline and online albums
- Edit images using automatic and manual tools
- Use automatic “Geotagging” with built in Google Maps

For more details on how to use the Vivitar Experience Image Manager open the “Help” from the menu option or click the “Take a Tour” button on the application’s Home screen.

Transferring Images from my Camera to my Computer Manually

Transferring Photos and Videos: WINDOWS

- 1) Use the USB cable that came with your camera to connect your camera to your computer.
- 2) MSDC appears on the LCD.
- 3) A window appears with a list of options, select “Open folder to view files” and click OK.
- 4) Open the DCIM folder and the folder inside to view the media files.
- 5) Select the media and copy the files from this folder into your computer. Optionally, select the files and choose Copy from the Edit menu. Then select a folder and choose Paste from the Edit menu.
- 6) We recommend that you copy the images into the Pictures/My Pictures folder and the videos into the Videos/My Videos folder.
- 7) Do not disconnect the cable during transfer. Doing so will cancel the transfer of any files on their way to your computer.

Transferring Photos and Videos: MACINTOSH

- 1) Use the USB cable that came with your camera to connect your camera to your computer.
- 2) MSDC appears on the LCD.
- 3) The camera's device icon appears on the desktop.
- 4) Click on the device icon and open the DCIM folder and the folder inside to view the media files.
- 5) Select the files and drag them into your computer. Optionally, select the files and choose Copy from the Finder's Edit menu. Then select a folder and choose Paste from the Edit menu.
- 6) We recommend that you copy the images into the Pictures folder and the videos into the Movies folder.
- 7) Do not disconnect the cable during transfer. Doing so will cancel the transfer of any files on their way to your computer.

Transferring Photos and Videos: Apple iPad

NOTE: Please check your device packaging for compatibility with the iPad.

Apple iPad Camera Connection:

For models that are compatible with the iPad, photos and videos can be imported from your digital camera to your iPad by following either one of the options below:

1) Connecting your digital camera to your iPad using an iPad Camera Connector:

Plug the Camera Connector into the dock connector port on your iPad, and then attach your digital camera using a USB cable (included) to the Camera Connector.

NOTE: The iPad Camera Connector is not included. This item may be purchased separately.

2) Using an iPad SD Card Reader:

Connect the SD Card Reader to your iPad, then insert your digital camera's SD Memory card into the slot to import photos and videos directly from your camera's SD card.

NOTE: The iPad SD Card Reader is not included. This item may be purchased separately.

After you make the connection, your iPad automatically opens the 'Photos' application. This allows you to choose which photos and videos to import and to organize them into albums.

Camera Maintenance

The digital camera is a delicate device. Please handle your camera with care to avoid damaging it.
Do not expose your camera to heat sources.
Do not use you camera in wet or moist conditions.

Sakar Warranty Card

This warranty covers for the original consumer purchaser only and is not transferable. Products that fail to function properly **UNDER NORMAL USAGE**, due to defects in material or workmanship will be repaired at no charge for parts or labor for a period of one year from the time of purchase.

What Is Not Covered By Warranty:

Damages or malfunctions not resulting from defects in material or workmanship and damages or malfunctions from other than normal use, including but limited to, repair by unauthorized parties, tampering, modification or accident.

What To Do When Service Is Required:

When returning your defective product (postage pre-paid) for service, your package should include:

- 1) Copy of **original** bill of sale.
- 2) A detailed written description of the problem.
- 3) Your return address and telephone number (Daytime).

MAIL TO ADDRESS BELOW:

<u>Sakar US</u> Sakar International Attention: Service Department 195 Carter Drive Edison, NJ 08817	<u>Sakar UK/Europe</u> Attention: Service Department 2D, Siskin Parkway East 4020 Middlemarch Business Park Coventry, CV3 4PE	<u>Sakar Australia</u> Return faulty camera to the Refund Counter at the store where purchased
--	--	---

Technical Support

For technical support issues please visit our website at **www.vivitar.com**. You can find manuals, software and FAQ's at the website. Can't find what you are looking for? E-mail us at **support@vivitar.com** and one of our technical support team members will answer your questions. For phone support in the US please call 1-800-592-9541, in the UK call 0800 917 4831, in Australia call 1800-006-614. If you would like to call from anywhere else, please visit **www.vivitar.com** for your local toll free number.

Troubleshooting

Q: I have taken photos and selected the "Get Images" button. I get a message that the images were successfully transferred but the photos do not appear on my computer.

What do I do?

First ensure that you have in fact taken photos. Press the Shutter button to take some sample photos and then try downloading them again.

With test photos, if the camera's power is off before you upload them to the computer, the photos are not stored in the camera's memory. These photos should be uploaded quickly before the camera's power is off. If the photos are saved to the SD memory card, then all the photos should appear.

Q: How do I make sure I don't lose important pictures?

This camera requires an SD card for normal use. If the camera's power is off, nothing will happen to the images stored on the SD memory card. We recommend always downloading your photos to your computer as soon as possible to prevent unintentional data loss.

Q: I deleted images using the Vivitar Experience Image Manager. The images were also deleted from my computer. How do I recover images that I accidentally deleted?

All images deleted using the Vivitar Experience Image Manager are sent to your computer's Recycle or Trash Bin and can be retrieved from there.