

Unpack

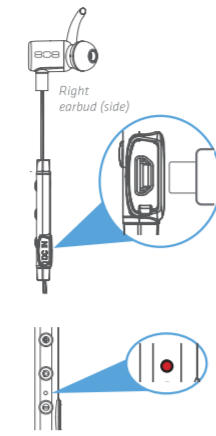
Make sure you have the following items in your 808 EarCanz package:

- 808 EarCanz Bluetooth earbuds
- Micro USB charging cable
- Eartips in 3 sizes
- Ear fins in 3 sizes
- Carry pouch

If you have any questions about this product, visit 808Audio.com or call our toll-free help line at 1-800-732-6866.

1. Charge the EarCanz

For best performance, we recommend you charge your EarCanz earbuds fully before using them.



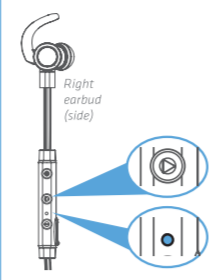
Open the DC IN flap on the side of the controls below the right earbud.

Plug the included USB charging cable into the charging jack behind the DC IN flap.

Plug the other end of the charging cable into a USB power source (like a computer or a USB charger).

The indicator light on the front of the controls turns red while the earbuds are charging. It turns blue when the earbuds are fully charged.

2. Turn on the EarCanz



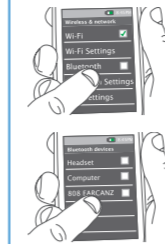
Unplug the USB charging cable when the earbuds are charged.

To turn on the EarCanz and start pairing to your Bluetooth device: Press and hold the **P** button on the controls for about 6 seconds (until the indicator on the controls starts blinking rapidly).

To turn on your EarCanz regularly: Press and hold the **P** button on the controls for 3 seconds. The indicator on the controls starts blinking slowly.

To turn the EarCanz off: Press and hold the **P** button on the controls for 3 seconds.

3. Pair + Connect



Enable Bluetooth on your smartphone or other device.

Choose **808 EarCanz** from the pairing options on your smartphone. (If it's not in the list, choose "Scan" from your phone's Bluetooth menu.)

IMPORTANT: If you've previously paired your phone or other Bluetooth device with these earbuds, the earbuds will automatically attempt to reconnect to that device when you turn them on. If you want to pair to a new device, turn the earbuds off. Then press and hold the **P** button on the controls for about 6 seconds (until the indicator on the controls starts blinking rapidly) to put the earbuds in pairing mode. Once the indicator on the controls starts blinking, go to step 3 to pair and connect.

The earbuds beep when the process is complete. The indicator on the controls turns solid blue.

Note: The process of enabling Bluetooth and connecting varies from device to device. See your device's owners manual for more information and specific instructions.

Bluetooth Wireless Connection Tips

- Make sure the Bluetooth capability of your device is turned on.
- The earbuds' Bluetooth wireless connection works up to a range of roughly 33 feet (10 meters). This range may vary however, based on other factors, such as room layout, wall material, obstacles, your device's Bluetooth performance, etc. If you're having problems connecting to the earbuds, move closer to your phone.
- Make sure your device supports audio transfer A2DP.
- If your device asks you for a password to connect, use "0000".

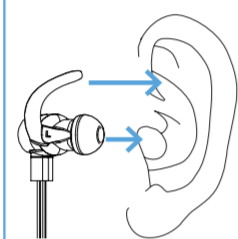
To pair the EarCanz again

After turning your earbuds back on, they automatically attempt to reconnect to the last connected device. If the last connected device is not available, the earbuds will enter pairing mode and be ready to pair to a new or different device.

Using the EarCanz

Putting the EarCanz in your ears

The EarCanz earbuds come with medium-sized eartips and ear fins installed. You can use different-sized tips and fins, but first try them with the medium sizes.

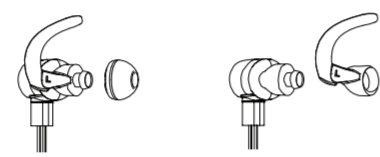


Find the L and R markings on the buds—place the cord behind your neck with the L bud on the left and R bud on the right.

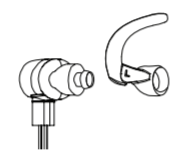
Place each eartip in your ear as shown here. The fin should go in the small ridge just above your ear canal on your outer ear—it might go automatically, or you might need to move it into place.

If the tips or fins don't fit (or you don't want to use fins at all), follow the directions in the next section to change them.

Changing the eartips or fins

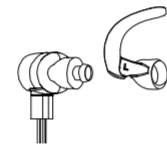


Remove the eartip from each earbud.

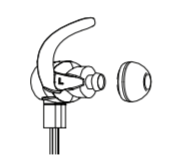


Remove the ear fin from each earbud.

If you want to use a different size ear fin, find the size you want, and match the L/R fins to L/R buds.



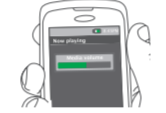
Place each fin on each bud.



Place each tip on each bud.

Note: You can use EarCanz with or without fins.

Listening to music



Set your device's volume for music to 50%. **Note:** This is to make sure the sound from the earbuds isn't too loud when you start streaming.

Start playing music or other audio on your device. Within seconds, the earbuds start streaming the audio wirelessly via Bluetooth.

Controlling playback and volume



The control panel near the right earbud lets you control music playback and volume wirelessly.

To play/pause music: Press the **P** button.

To adjust volume: Press the **+** or **-** button.

To go to the previous/next song: Press and hold the **+** or **-** button.

Answering/ending phone calls

The earbuds' control panel has a built-in microphone, so you can use the EarCanz for phone calls. Your phone will ring through the earbuds when you're receiving a call. You can answer and end the call wirelessly from the control panel.

To answer or end a phone call: Press the **P** button.

IMPORTANT: Not all phones support playback control and phone answer/end control. Check your phone's user manual for more information if you're having trouble with these functions.



808 | **EARCANZ**
quick start guide

HRA205 DSC 03