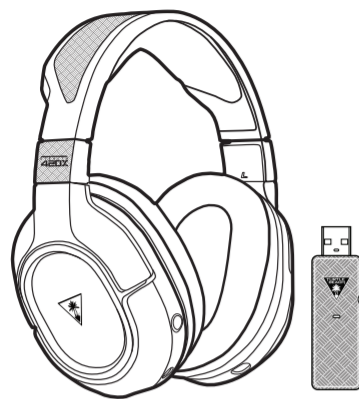


**TURTLE BEACH**  
#1 IN GAMING AUDIO

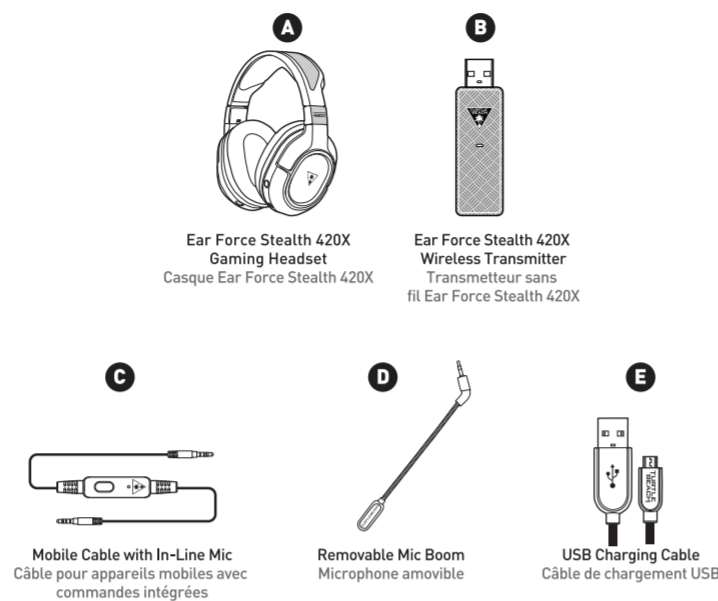
**WIRELESS**  
FOR / POUR: Xbox One  
Mobile



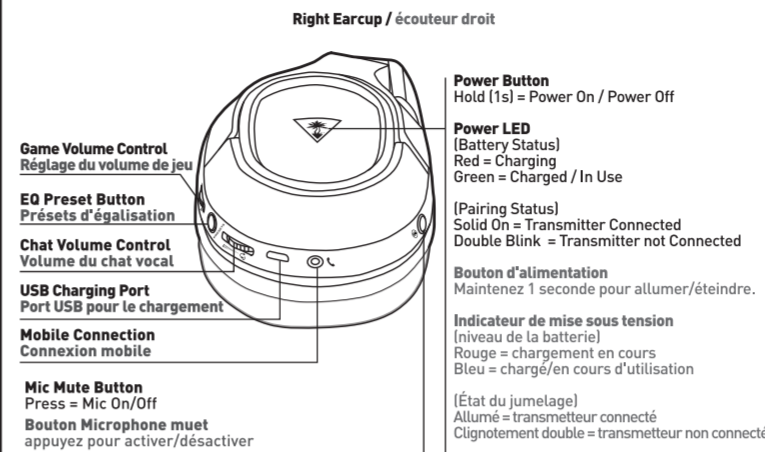
**STEALTH 420X**  
Quick Start Guide

For more detailed product information, visit [www.turtlebeach.com/Stealth420X](http://www.turtlebeach.com/Stealth420X)  
For additional console compatibility and connection information visit [www.turtlebeach.com/connect](http://www.turtlebeach.com/connect)

**Package Contents**  
Contenu de la boîte



**Headset Controls**  
Commandes sur casque



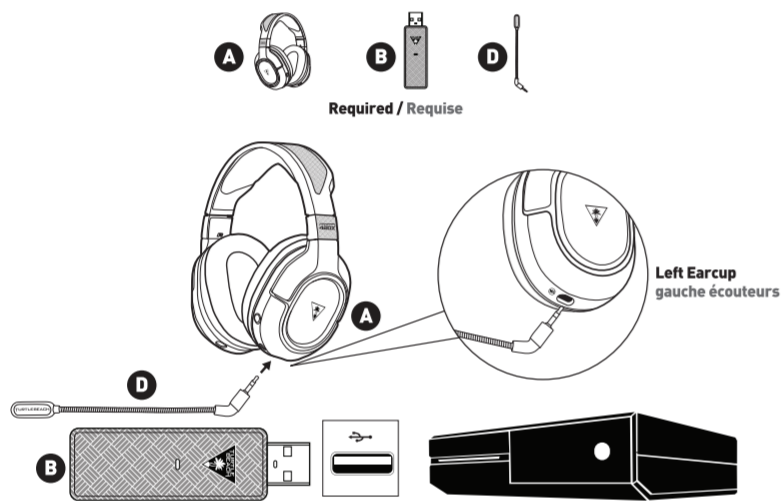
**EQ Presets | Présets d'égalisation**

Natural	Naturel
Bass Boost	Amplification des basses
Bass + Treble Boost	Amplification des basses et des aigus
Vocal Boost	Amplification vocal

**Transmitter**  
Transmetteur



**Xbox One Setup**  
Configuration Xbox One

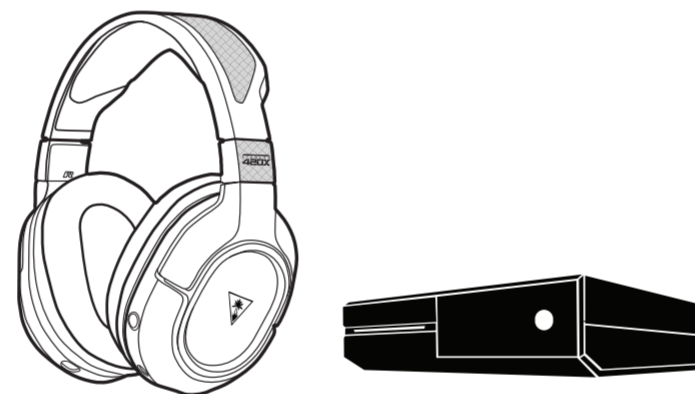


Make sure the Xbox One is fully powered on and signed into a Xbox Live profile before connecting the Transmitter for the first time.

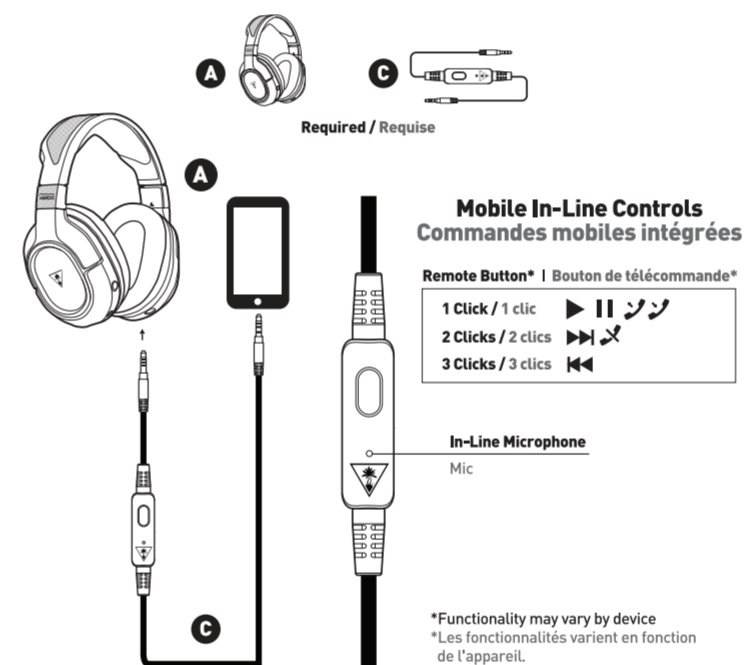
Assurez-vous que la console Xbox One est allumée et connectée à Xbox Live avant de brancher le transmetteur pour la première fois.

It is important to always run the most up-to-date firmware.  
For detailed setup and firmware update instructions visit  
Pour obtenir les informations d'installation les plus récentes, consultez :

[turtlebeach.com/Stealth420X](http://turtlebeach.com/Stealth420X)



**Mobile Setup**  
Configuration mobile



**Mobile In-Line Controls**  
Commandes mobiles intégrées

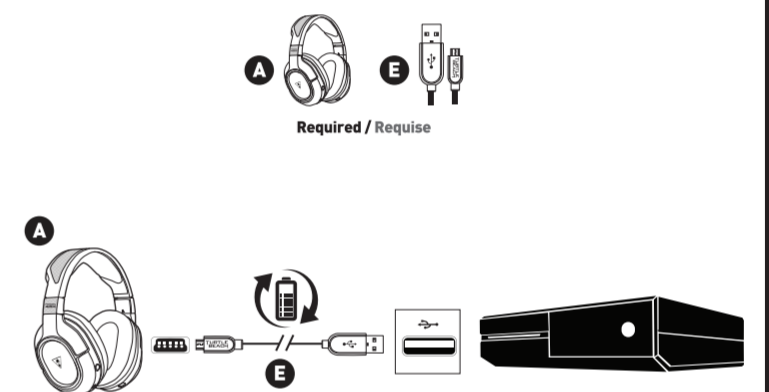
**Remote Button\* | Bouton de télécommande\***

- 1 Click / 1 clic ▶▶▶
- 2 Clicks / 2 clics ▶▶
- 3 Clicks / 3 clics ▶▶▶▶▶

**In-Line Microphone**  
Mic

\*Functionality may vary by device  
\*Les fonctionnalités varient en fonction de l'appareil.

**Charging**  
Chargement



The Stealth 420X uses a rechargeable battery. Make sure to charge it regularly.  
**Headset Storage**  
Always charge your headset before storing it for any extended period of time (greater than 3 months). Never store the unit in temperatures above 113°F/45°C.

Le Stealth 420X dispose d'une batterie rechargeable. Assurez-vous de la charger régulièrement.  
**Rangement du casque :** Chargez toujours votre casque avant de le ranger pour une longue durée [plus de 3 mois]. Ne stockez jamais le casque à des températures supérieures à 45°C.

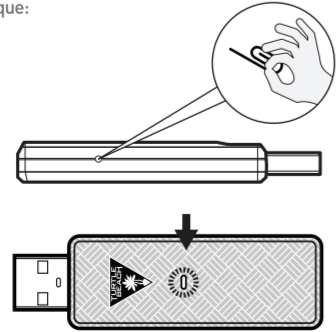
**Pairing**  
Jumelage



The Stealth 420X Headset and Transmitter come paired out of the box. When paired, with both the Headset and Transmitter powered on, the Transmitter's LED will be on solid (lit, but not blinking). However, if your Transmitter's LED is pulsing, follow the steps below to pair your Headset and Transmitter.

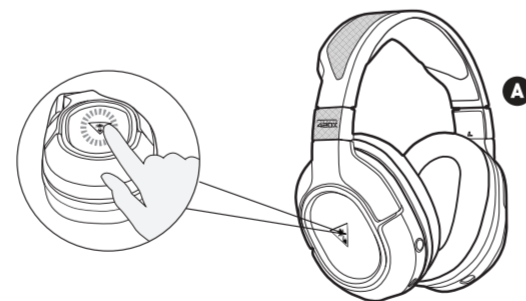
Le casque Stealth 420X et le transmetteur ont normalement déjà été jumelés lorsque vous achetez le produit. Si c'est bien le cas, l'indicateur du transmetteur doit être allumé (mais ne pas clignoter) lorsque le casque et le transmetteur sont allumés. Si l'indicateur de votre transmetteur clignote, suivez les étapes ci-dessous pour le jumeler à votre casque :

**1** Start this process with the headset powered OFF. Press and hold the Pairing Button on the Transmitter until the Transmitter's LED flashes rapidly (2-3 seconds), then release. (Use a Paperclip or something similar to press the Pinhole button)



Lancez la procédure avec le casque éteint. Maintenez le bouton de jumelage du transmetteur enfoncé pendant 5 secondes, jusqu'à ce que l'indicateur de jumelage du transmetteur se mette à clignoter rapidement. (Utilisez un trombone ou un objet similaire pour appuyer sur ce petit bouton)

**2** 5 seconds



Press and hold the Power Button on the Headset until the Headset's Power LED flashes rapidly (5 seconds), then release.

Maintenez le bouton d'alimentation du casque enfoncé pendant 5 secondes, jusqu'à ce que l'indicateur d'alimentation du casque se mette à clignoter rapidement, puis relâchez.

**3** Within 10 seconds, the Transmitter's and Headset's LED will remain on solid, indicating that pairing has been successful.

Dans les 10 secondes qui suivent, l'indicateur du transmetteur et casque doit rester allumé, ce qui signifie que le jumelage a bien été effectué.

For additional information visit,  
Pour de plus amples informations rendez-vous sur,  
[www.turtlebeach.com/support](http://www.turtlebeach.com/support)

**Compliance**  
Conformité

**Regulatory Compliance Statements for the EAR FORCE Stealth 420X RX & TX Models**  
**Federal Communications Commission (FCC) Compliance Notices**  
This section includes the following FCC statements for the EAR FORCE Stealth 420 RX & TX Models:  
- FCC ID: X0B-TB2470 (Headset)  
- FCC ID: X0B-TB2471 (Transmitter)  
- Class B Interference Statement  
- RF Radiation Exposure & Hazard Warning  
- Non-Modification Statement  
- Deployment Statement  
**Class B Interference Statement**  
This equipment has been tested and found to comply with the limits for a Class B digital device, pursuant to Part 15 of the FCC Rules. These limits are designed to provide reasonable protection against harmful interference in a residential installation. This equipment generates, uses, and can radiate radio frequency energy and, if not installed and used in accordance with the instructions, may cause harmful interference to radio communications. However, there is no guarantee that interference will not occur in a particular installation. If this equipment does cause harmful interference to radio or television reception, which can be determined by turning the equipment off and on, the user is encouraged to try to correct the interference by one or more of the following measures:  
- Reorient or relocate the receiving antenna.  
- Increase the separation between the equipment and receiver.  
- Connect the equipment into an outlet on a circuit different from that to which the receiver is connected.  
- Consult the dealer or an experienced radio/TV technician for help.  
**FCC Caution:**  
This device complies with Part 15 of the FCC Rules. Operation is subject to the following two conditions: (1) This device may not cause harmful interference, and (2) this device must accept any interference received, including interference that may cause undesired operation.  
**RF Radiation Exposure & Hazard Statement**  
To ensure compliance with FCC RF exposure requirements, this device must be installed in a location such that the antenna of the device will be greater than 2 cm (0.8 in.) from all persons. Using higher gain antennas and types of antennas not covered under the FCC certification of this product is not allowed. Installers of the radio and end users of the product must adhere to the installation instructions provided in this manual. This transmitter must not be co-located or operated in conjunction with any other antenna or transmitter.  
**Non-Modification Statement**  
Use only the supplied internal antenna. Unauthorized antennas, modifications, or attachments could damage the EAR FORCE Stealth 420 RX & TX Models and violate FCC regulations. Any changes or modifications not expressly approved by the party responsible for compliance could void the user's authority to operate this equipment. Please contact Turtle Beach for a list of approved 2.4 GHz antennas.

This symbol on the product or its packaging indicates that this product must not be disposed of with your other household waste. Instead, it is your responsibility to dispose of your waste equipment by handing it over to a designated collection point for the recycling of waste electrical and electronic equipment. The separate collection and recycling of your waste equipment at the time of disposal will help conserve natural resources and ensure that it is recycled in a manner that protects human health and the environment. For more information about where you can drop off your waste for recycling, please contact your local authority, or where you purchased your product.

**Canadian ICES Statements IC:** 3879A-TB2470 (Headset) 3879A-TB2471 (Transmitter)  
This device complies with ICES-003 and RSS-210 of Industry Canada. Operation is subject to the following two conditions:  
1. This device may not cause interference, and  
2. This device must accept any interference, including interference that may cause undesired operation of the device.  
**Ce dispositif est conforme aux normes NMB003 et CNR-210 d'Industrie Canada.**  
1. L'utilisation de ce dispositif est autorisée seulement aux conditions suivantes :  
1. Il ne doit pas produire de brouillage et l'utilisateur du dispositif doit être prêt à accepter tout brouillage radioélectrique reçu, même si ce brouillage est susceptible de compromettre le fonctionnement du dispositif.  
2. Il ne doit pas produire de brouillage et l'utilisateur du dispositif doit être prêt à accepter tout brouillage radioélectrique reçu, même si ce brouillage est susceptible de compromettre le fonctionnement du dispositif.  
To prevent radio interference to the licensed service (i.e. co-channel Mobile Satellite systems) this device is intended to be operated indoors and away from windows to provide maximum shielding. Equipment (or its transmit antenna) that is installed outdoors is subject to licensing and not supported by EAR FORCE Stealth 420 RX & TX Models.  
**RF Radiation Exposure & Hazard Statement**  
To ensure compliance with RSS-102 RF exposure requirements, this device must be installed in a location such that the antenna of the device will be greater than 2 cm (0.8 in.) away from all persons. Using higher gain antennas and types of antennas not covered under the IC certification of this product is not allowed. Installers of the radio and end users of the product must adhere to the installation instructions provided in this manual. This transmitter must not be co-located or operated in conjunction with any other antenna or transmitter.  
**Exposition aux radiations RF & Mention de danger**  
Pour assurer la conformité avec les exigences RSS-102 d'exposition aux RF (Radio Fréquences), cet appareil doit être installé dans un endroit où l'antenne de l'appareil sera située à une distance de plus de 2 cm (0,8 po) de toutes personnes. L'utilisation d'antennes à gain plus élevé et les types d'antennes qui ne sont pas couverts en vertu de la certification IC de ce produit n'est pas autorisée. Les installateurs de la radio et les utilisateurs du produit final doivent se conformer aux instructions d'installation fournies dans ce manuel. Cet émetteur ne doit pas être co-implanté ou exploité en conjonction avec toute autre antenne ou transmetteur.  
**European Union and European Fair Trade Association Regulatory Compliance**  
This equipment may be operated in the countries that comprise the member countries of the European Union and the European Fair Trade Association.  
**Marking by this symbol:**  
Indicates compliance with the Essential Requirements of the R&TTE Directive of the European Union (1999/5/EC). This equipment meets the following conformance standards:  
**Safety:** EN 60950-1:2006 + A1:2009 + A1:2010 + A1:2011 (T-Mark License), IEC 60950-1:2005 (2nd Edition) + Am 1:2009 (CB Scheme Report/Certificate), EN 50332-1:2000, EN 50332-2:2003, EN 71-3:2013.  
**EMC:** EN 55022:2010, EN 301 489-1 v1.9.2 [2011-09], EN 301 489-17 v2.1 [2009-05], EN 61000-4-2:2009, EN 61000-4-3:2010, EN 61000-4-8 [2010]  
**Radiation:** 300 329 v1.8.1 [2012-06]  
**SAR:** EN 62211:2008  
**Environmental :** Low Voltage Directive 2006/95/EC, RoHS 2011/65/EU, WEEE 2002/96/EC, REACH 2006/1907/EC, Packaging 94/62/EC, Battery 2006/66/EC, Toys Safety Directive 2009/48/EC.  
**Warning!** This is a Class B product. In a domestic environment, this product may cause radio interference, in which case, the user may be required to take appropriate measures.  
**Achtung!** Dieses ist ein Gerät der Funkstrahlungs-Klasse B. In Wohnbereichen können bei Betrieb dieses Gerätes Rundfunkstörungen auftreten, in welchen Fällen der Benutzer für entsprechende Gegenmaßnahmen verantwortlich ist.  
**Attention!** Ceci est un produit de Classe B. Dans un environnement domestique, ce produit risque de créer des interférences radioélectriques, il appartient alors à l'utilisateur de prendre les mesures spécifiques appropriées.