

# FRONT

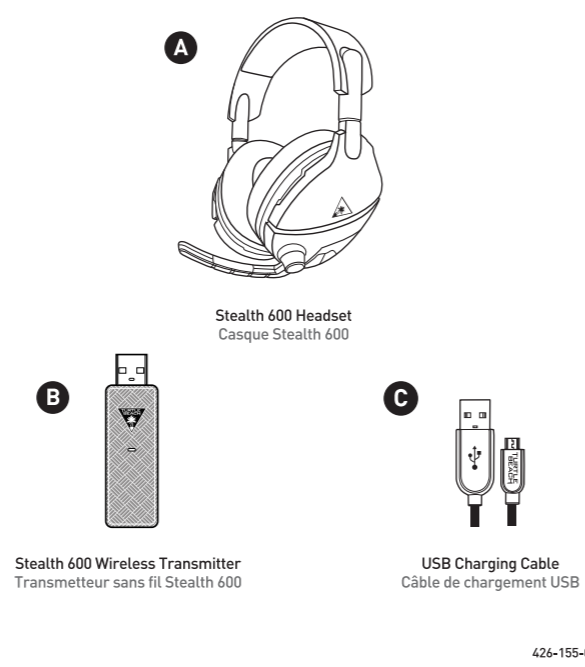
# EAR FORCE<sup>®</sup> STEALTH 600

## QUICK START GUIDE GUIDE DE DÉMARRAGE RAPIDE

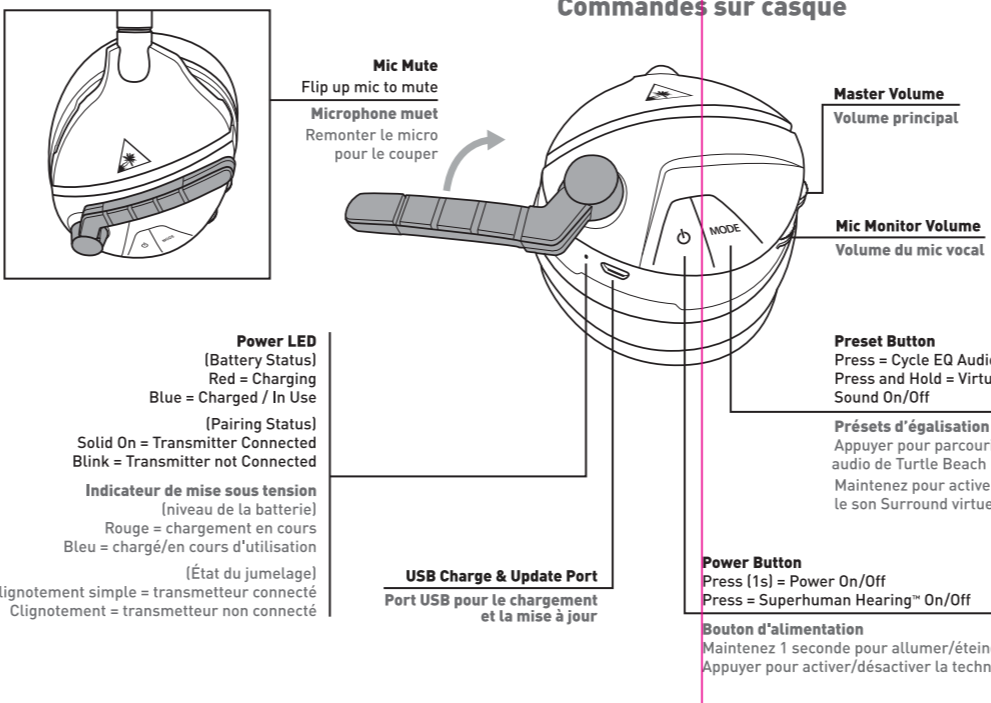
**IMPORTANT** **À LIRE**  
**READ BEFORE USING** **AVANT TOUTE UTILISATION**

**Any questions? Des questions?**  
[turtlebeach.com/audiohub](http://turtlebeach.com/audiohub) | [turtlebeach.com/support](http://turtlebeach.com/support)  
FOR MODEL: STEALTH 600P

### Package Contents Contenu de la boîte



### Headset Controls Commandes sur casque



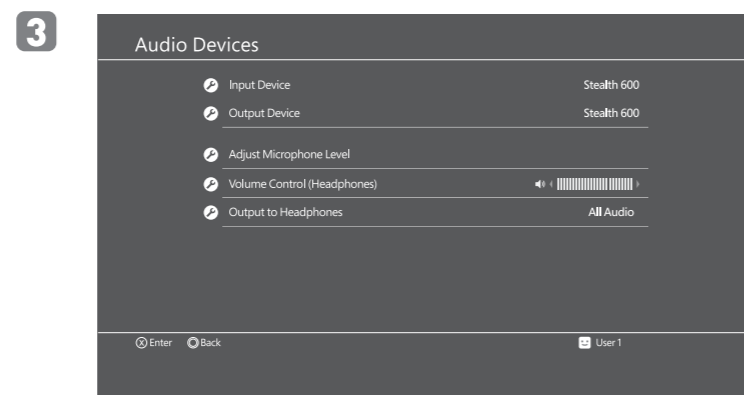
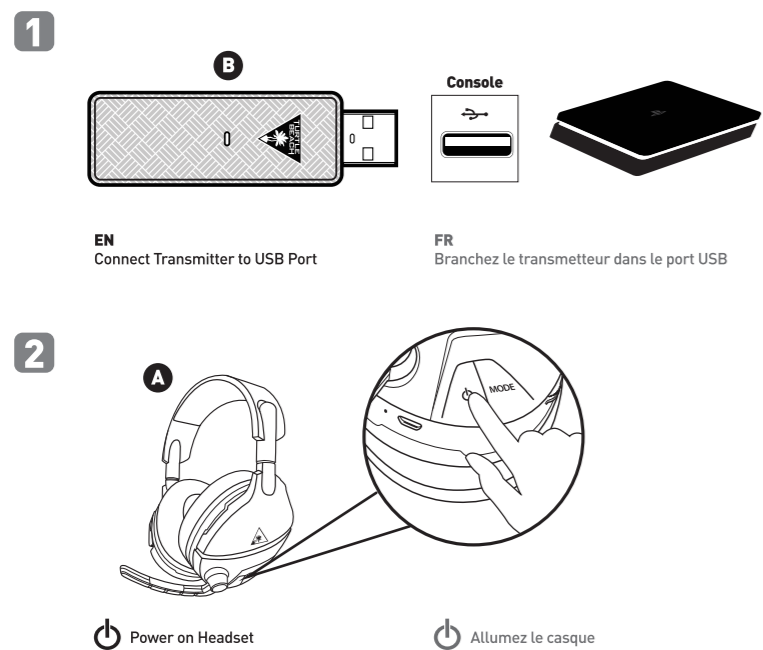
EQ Presets   Préréglages d'égalisation	
Signature Sound	Son emblématique
Base Boost	Amplification des basses
Bass + Treble Boost	Amplification des basses et des aigus
Vocal Boost	Amplification vocale



Use Superhuman Hearing™ Mode to pinpoint quiet audio cues like enemy footsteps and weapon reloads. Le mode Superhuman Hearing™ permet d'entendre le moindre son, comme les pas d'un adversaire ou le rechargement d'une arme.

**Power Button**  
Press (1s) = Power On/Off  
Press = Superhuman Hearing™ On/Off  
Bouton d'alimentation  
Appuyez 1 seconde pour allumer/éteindre  
Appuyez pour activer/désactiver la technologie Superhuman Hearing™

### Setup for PS4™ Pro | PS4™ Configuration PS4™ Pro & PS4™



**Go to Settings >> Devices >> Audio Devices**  
a. Select **Stealth 600** for Input & Output Device  
b. Set Output to **Headphones in Audio**  
c. Set **Volume Control (Headphones)** level to maximum  
d. Select **Adjust Microphone Level** and follow the on-screen instructions to calibrate your microphone

**ES**  
1. Conecta el transmisor al puerto USB  
2. Enciende los auriculares  
3. Ve a Configuración >> Dispositivos >> Dispositivos de sonido  
a. Selecciona Stealth 600 como el dispositivo de entrada y salida  
b. Configura la salida de los auriculares a todos los sonidos al máximo  
c. Configura el nivel del control de volumen (auriculares) al máximo  
d. Select **Adjust Microphone Level** and follow the on-screen instructions to calibrate your microphone

### Firmware Update and Customization Mise à jour du micrologiciel et personnalisation

**Important: Update before using**  
**Important: mise à jour avant utilisation**



**turtlebeach.com/audiohub**  
Connect to the Ear Force Audio Hub for Windows or Mac to update firmware and customize your sound further.  
Connectez-vous au Ear Force Audio Hub pour PC ou Mac afin de mettre le micrologiciel à jour et personnaliser votre audio.

# PKG DESIGN DEPT

**Designer:** Gina Opalec  
**Product:** Stealth 600 Xbox  
**Project:** QSG  
**Date:** May / 30 / 17  
**Scale:** 100%

# COMMENTS

**Please do not print this layer!!!**  
• 100% actual size  
• Refer to video on how to fold

# SPECIFICATIONS

## Printing information

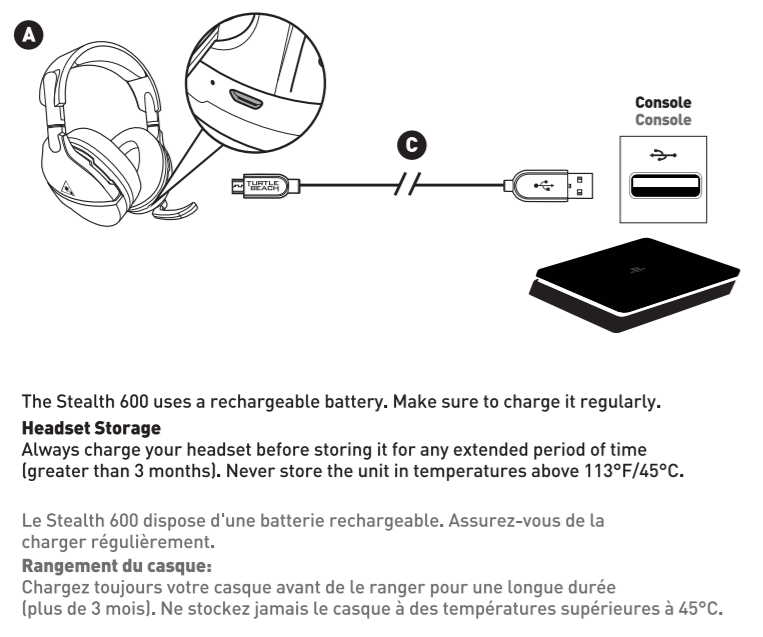
**BLK + WHT**  
 **QSG Paper Weight (80g) Foldout**  

---

**Folding Line**

# BACK

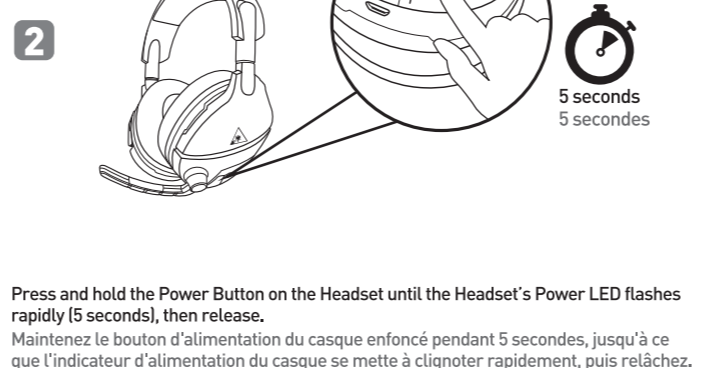
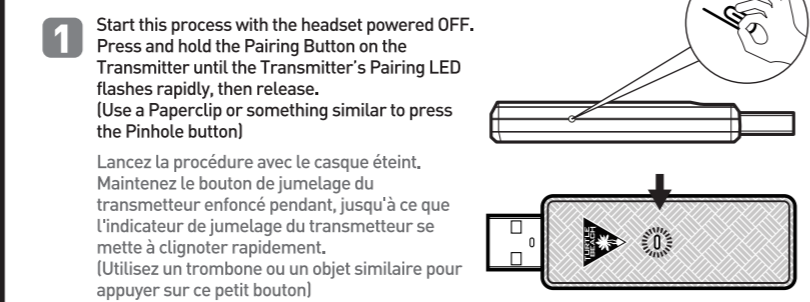
### Charging Chargement



The Stealth 600 uses a rechargeable battery. Make sure to charge it regularly.  
**Headset Storage**  
Always charge your headset before storing it for any extended period of time (greater than 5 months). Never store the unit in temperatures above 113°F/45°C.  
Le Stealth 600 dispose d'une batterie rechargeable. Assurez-vous de la charger régulièrement.  
**Rangement du casque:**  
Chargez toujours votre casque avant de le ranger pour une longue durée (plus de 3 mois). Ne stockez jamais le casque à des températures supérieures à 45°C.

### Pairing Jumelage

The Stealth 600 Headset and Transmitter come paired out of the box. When paired, with both the Headset and Transmitter powered on, the Transmitter's LED will be on solid (lit, but not blinking). However, if your Transmitter's LED is double-blinking, follow the steps below to pair your Headset and Transmitter.  
Le casque Stealth 600 et le transmetteur devaient avoir été jumelés lorsque vous achetez le produit. Si ce n'est bien le cas, l'indicateur du transmetteur doit être allumé (mais ne pas clignoter) lorsque le casque et le transmetteur sont allumés. Si l'indicateur de votre transmetteur clignote, suivez les étapes ci-dessous pour le jumeler à votre casque.



Within 10 seconds, the Transmitter's and Headset's LED will remain on solid, indicating that pairing has been successful.  
Dans les 10 secondes qui suivent, l'indicateur du transmetteur doit rester allumé, tandis que l'indicateur d'alimentation du casque doit clignoter régulièrement, à raison d'une fois par seconde, ce qui signifie que le jumelage a bien été effectué.  
For additional information visit, [rendez-vous sur www.turtlebeach.com/support](http://www.turtlebeach.com/support)

**Regulatory Compliance Statements for the EAR FORCE Stealth 600P RX & TX Models**  
**Federal Communications Commission (FCC) Compliance Notices**  
This section includes the following FCC statements for the EAR FORCE Stealth 600P RX & TX:  
• FCC ID: A6379A-TB236J (RX) & A6379A-TB236J (TX) • Non-Modification Statement  
• Class B Interference Statement • RF Radiation Exposure & Hazard Warning  
**Class B Interference Statement**  
This equipment has been tested and found to comply with the limits for a Class B digital device, pursuant to Part 15 of the FCC Rules. These limits are designed to provide reasonable protection against harmful interference in a residential installation. This equipment generates, uses, and can radiate radio frequency energy and, if not installed and used in accordance with the instructions, may cause harmful interference to radio communications. However, there is no guarantee that interference will not occur in a particular installation. If this equipment does cause harmful interference to radio or television reception, which can be determined by turning the equipment off and on, the user is encouraged to try to correct the interference by one or more of the following measures:  
• Reorient or relocate the receiving antenna.  
• Increase the separation between the equipment and receiver.  
• Connect the equipment into an outlet on a circuit different from that to which the receiver is connected.  
• Consult the dealer or an experienced radio/TV technician for help.  
**FCC Caution:**  
This device complies with Part 15 of the FCC Rules. Operation is subject to the following two conditions: (1) This device may not cause harmful interference, and (2) this device must accept any interference received, including interference that may cause undesired operation.  
**RF Radiation Exposure & Hazard Statement**  
To ensure compliance with FCC RF exposure requirements, this device must be installed in a location such that the antenna of the device will be greater than 2 cm (0.8 in.) from all persons. Using higher gain antennas and types of antennas not covered under the FCC certification of this product is not allowed. Installers of the radio and end users of the product must adhere to the installation instructions provided in this manual. This transmitter must not be co-located or operated in conjunction with any other antenna or transmitter.  
**Non-Modification Statement**  
Use only the supplied internal antenna. Unauthorized antennas, modifications, or attachments could damage the EAR FORCE Stealth 600P RX & TX Models and violate FCC regulations. Any changes or modifications not expressly approved by the party responsible for compliance could void the user's authority to operate this equipment. Please contact Turtle Beach for a list of approved 2.4 GHz antennas.  
**Canadian ICES Statements IC: 3679A-TB236J (RX) and IC: 3679A-TB236J (TX)**  
This device complies with ICES-003 and ICES-002 of Industry Canada. Operation is subject to the following two conditions:  
1. This device may not cause interference, and  
2. This device must accept any interference, including interference that may cause undesired operation of the device.

**Ce dispositif est conforme aux normes NMB003 et CNR-247 d'Industrie Canada.**  
1. L'utilisation de ce dispositif est autorisée seulement aux conditions suivantes:  
2. Il ne doit pas produire de brouillage et l'utilisateur du dispositif doit être prêt à accepter tout brouillage radioélectrique reçu, même si ce brouillage est susceptible de compromettre le fonctionnement du dispositif.  
To prevent radio interference to the licensed service (i.e. co-channel Mobile Satellite systems) this device is intended to be operated outdoors and away from windows to provide maximum shielding. Equipment for its transmit antenna that is installed outdoors is subject to licensing and not supported by EAR FORCE Stealth 600P RX & TX Models.  
Pour éviter les interférences radio au service agréé (i.e.-d. Les systèmes par satellite mobile co-canal), cet appareil est destiné à être installé à l'extérieur et à être éloigné des fenêtres pour assurer un blindage maximal. L'équipement for son antenne d'émission installée à l'extérieur n'est soumis à l'octroi de licences et n'est pas pris en charge par les modèles EAR FORCE 600P RX et TX.  
**RF Radiation Exposure & Hazard Statement**  
To ensure compliance with ICES-002 RF exposure requirements, this device must be installed in a location such that the antenna of the device will be greater than 2 cm (0.8 in.) away from all persons. Using higher gain antennas and types of antennas not covered under the IC certification of this product is not allowed. Installers of the radio and end users of the product must adhere to the installation instructions provided in this manual. This transmitter must not be co-located or operated in conjunction with any other antenna or transmitter.  
**Exposition aux radiations RF & Mention de danger**  
Pour assurer la conformité avec les exigences ICES-002 d'exposition aux RF (Radio Fréquences), cet appareil doit être installé dans un endroit où l'antenne de l'appareil sera située à une distance de plus de 2 cm (0,8 po) de toutes personnes. L'utilisation d'antennes à gain plus élevé et de types d'antennes qui ne sont pas couverts par la certification IC de ce produit n'est pas autorisée. Les installateurs de la radio et les utilisateurs du produit final doivent se conformer aux instructions d'installation fournies dans ce manuel. Cet émetteur ne doit pas être co-implanté ou exploité en conjonction avec toute autre antenne ou transmetteur.  
**European Union and European Free Trade Association Regulatory Compliance**  
This equipment may be operated in the countries that comprise the member countries of the European Union and the European Free Trade Association. These countries (listed below) are referred to as The European Community throughout this document:  
AUSTRIA, BELGIUM, BULGARIA, CYPRUS, CZECH REPUBLIC, DENMARK, ESTONIA, FINLAND, FRANCE, GERMANY, GREECE, HUNGARY, IRELAND, ITALY, LITHUANIA, LUXEMBOURG, MALTA, NETHERLANDS, POLAND, PORTUGAL, ROMANIA, SLOVAKIA, SLOVENIA, SPAIN, SWEDEN, SWITZERLAND, ICELAND, LICHTENSTEIN, NORWAY, SWITZERLAND  
**Declaration of Conformity**  
Marking by this symbol: indicates compliance with the Essential Requirements of the Radio Equipment Directive (RED) of the European Union (2014/53/EU). This equipment meets the following conformance standards:  
**Safety:** EN 60950-1:2006 + A11:2009 + A1:2010 + A12:2011 + A2:2014 (TMark License),  
IEC 60950-1:2005 (2nd Ed.) + Am 1:2009 + Am 2:2013 (CB Scheme Certified),  
EN 62311-1:2005, EN 62311-2:2002, EN 62311-3:2013  
Additional licenses issued for specific countries available on request

**EMC: EN 55022:2010 + AC:2011,**  
EN 301 489-1 V2.2.0 (2017-03), EN 301 489-1 V3.1.1 (2016-11),  
EN 61000-3-2:2007, EN 61000-3-3:2004 + A2:2011, EN 61000-4-2010  
The products are licensed as required, for additional country specific standards for the International Marketplaces.  
Additional issued licenses available upon request.  
**Radio:** EN 302 328 v3.1.1 (2016-11)  
**Environmental:** RoHS 2011/65/EU, WEEE 2012/19/EU, REACH 2006/1907/EC,  
Packaging NAZC/FC, Battery 2006/MAEC, Toy Safety 2009/SAEC  
**Warning:** This is a Class B product. In a domestic environment, this product may cause radio interference, in which case, the user may be required to take appropriate measures.  
**Achtung:** Dieses ist ein Gerät der Funkfrequenzklasse B. In Wohnbereichen können bei Betrieb dieses Gerätes Rundfunkstörungen auftreten, in welchen Fällen der Benutzer für entsprechende Gegenmaßnahmen verantwortlich ist.  
**Attention:** Ceci est un produit de Classe B. Dans un environnement domestique, ce produit risque de créer des interférences radioélectriques, à l'appartenance à l'utilisateur de prendre les mesures spécifiques appropriées.  
This symbol on the product or its packaging indicates that this product must not be disposed of with your other household waste. Instead, it is your responsibility to dispose of your waste equipment by handing it over to a designated collection point for the recycling of waste electrical and electronic equipment. The separate collection and recycling of your waste equipment at the time of disposal will help conserve natural resources and ensure that it is recycled in a manner that protects human health and the environment. For more information about where you can drop off your waste for recycling, please contact your local authority, or where you purchased your product.  
This product is compliant with the Consumer Product Safety Improvement Act of 2008, Public Law 110-316 (CPSIA). Please visit the following URL, for a complete copy of the declaration of conformity: <http://www.turtlebeach.com/homeologation>  
**To Access the Rating Label:**  
1. Remove the left ear pad, start by pulling the ear pad straight up using your thumb.  
2. Once you've released the cloth from the lip on top, pull the ear pad straight back and it should slip right off.  
To replace the ear pad, follow the same process in reverse.

### Notes Notes