



EAR FORCE i70 Quick Start Guide

To get the best performance from your i70 please visit www.turtlebeach.com/i70
For i70 technical support please call 1.855.887.8555 (For US and Canada Customers only)

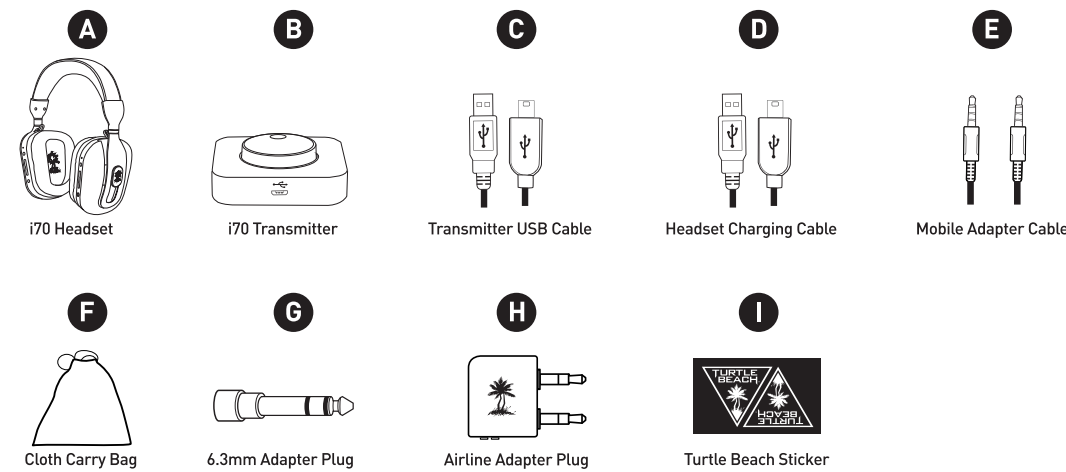
Copyright © 2014 Veytra Turtle Beach, Inc. (VTB, Inc.) All rights reserved. TURTLE BEACH, the Palm Tree Logo, Veytra and Ear Force are trademarks or registered trademarks of VTB, Inc. Bluetooth is a registered trademark of SIG, Inc. For DTS patents, see <http://patents.dts.com>. Manufactured under license from DTS Licensing Limited. DTS, the Symbol, & DTS and the Symbol together are registered trademarks, and DTS Headphone X is a trademark of DTS, Inc. © DTS, Inc. All Rights Reserved. Apple is not responsible for the operation of this device or its compliance with safety and regulatory standards. Please note that the use of this accessory with iPad, iPhone, or iPod may affect wireless performance. Mac, iPad, iPhone, iPod touch, iPod and Siri are trademarks of Apple Inc., registered in the US and other countries. Actual product appearance may differ from package imagery.

Welcome to your first media headset

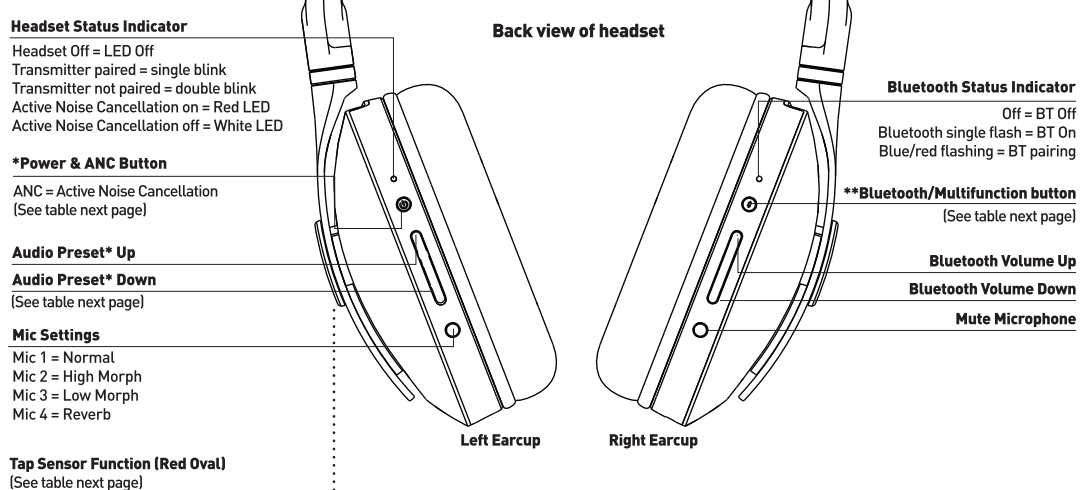
This Quick Start Guide is designed to get you up and running with the powerful features of the i70.

- Silence unwanted background noise with the latest in noise cancelling technology
- Experience perfectly tuned Surround Sound from your Mac wherever you are in the room
- Manage and use the built in Audio Presets, from Bass Boost to Superhuman Hearing, opening up new experiences in your favorite movies, music and games
- Pair to multiple Mobile devices via Bluetooth to take calls and stream music while working or playing
- Take your headset anywhere connected to your Mobile device in wired mode
- Massive powerful speakers with acoustically tuned drivers deliver incredible audio performance and clarity

Package Contents



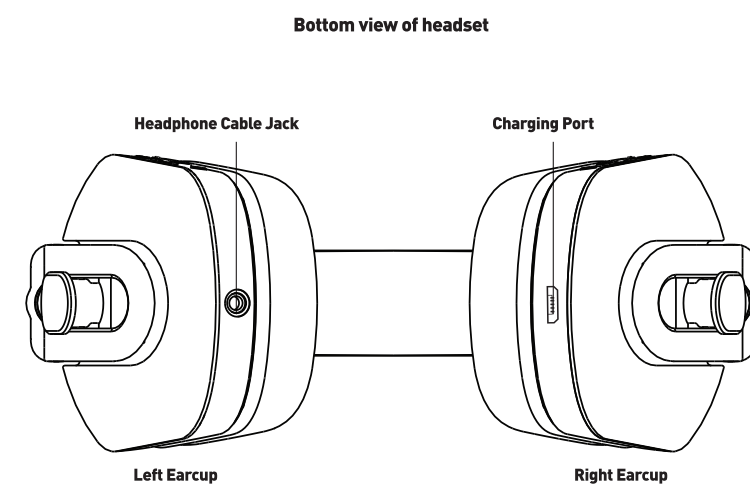
i70 Button Layout



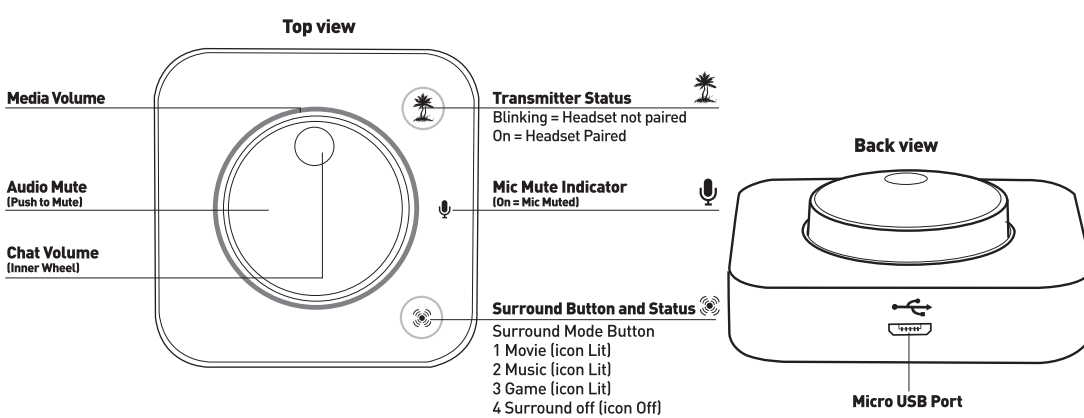
i70 Control Tables

* DESKTOP & MOBILE AUDIO PRESETS	TAP SENSOR FUNCTIONS
Preset 1: Flat Preset 2: Bass Boost Preset 3: Treble Boost Preset 4: Bass and Treble Boost Preset 5: Stereo Expander (Surround Off)	Tap [1d] Answer/End Phone Call Tap [2zi] Siri (Voice) Activation Tap Red Oval on center of left earcup to use tap sensor functions.
Presets 1-4 are active when only paired to a mobile device Presets 5-8 are active when paired to the transmitter	**BLUETOOTH/MULTIFUNCTION BUTTON If you want to... Then... a. Power on the headset Tap the Power Button b. Power off the headset Hold down the Power Button c. Turn ANC On/Off Tap the Power Button when the headset is on
*POWER & ANC BUTTON If you want to... Then... a. Power on the headset Tap the Power Button b. Power off the headset Hold down the Power Button c. Turn ANC On/Off Tap the Power Button when the headset is on	If you want to... Then... a. Turn on Bluetooth Tap the BT Button b. Turn off Bluetooth Hold down BT Button until the BT LED turns OFF c. Answer/End Phone Call Tap the BT Button

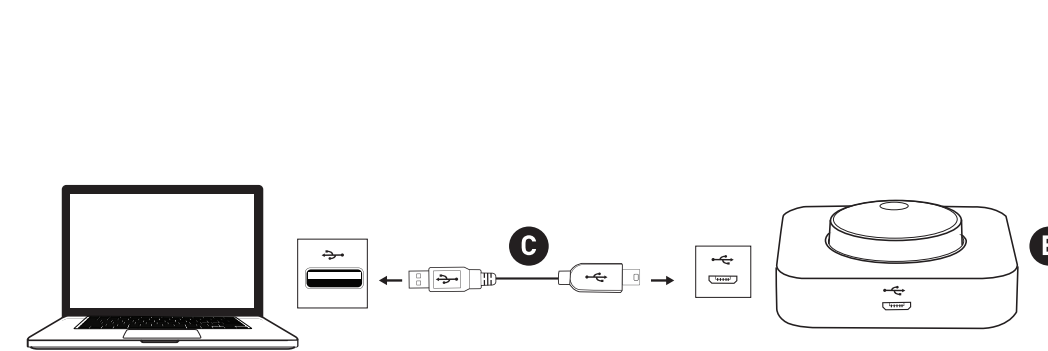
i70 Headset Connections



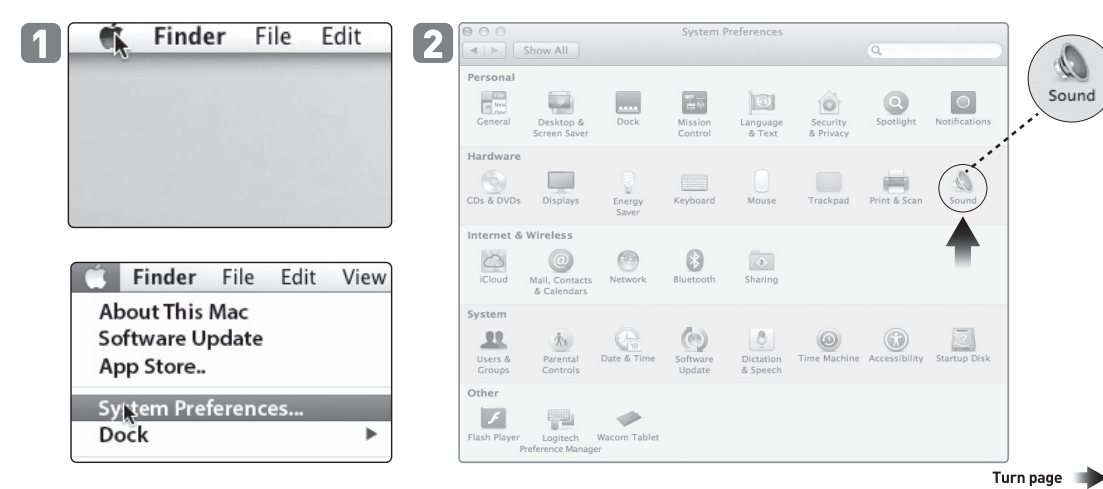
Transmitter Button Layout



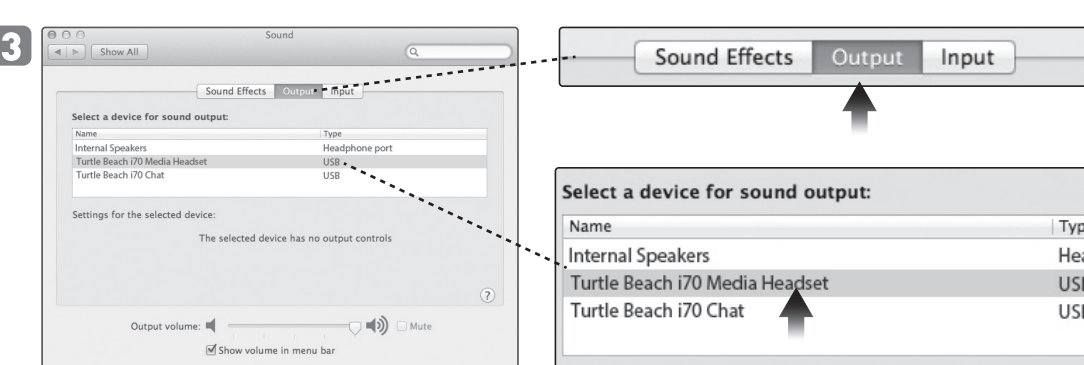
Mac Hardware Setup



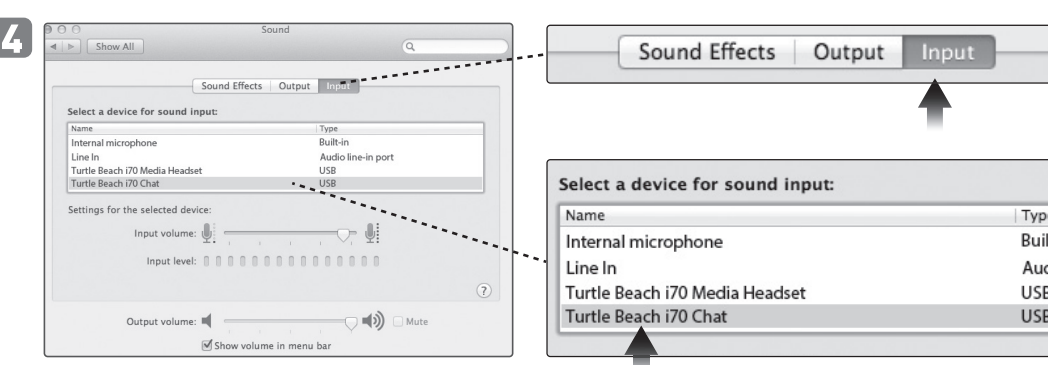
Mac Setup



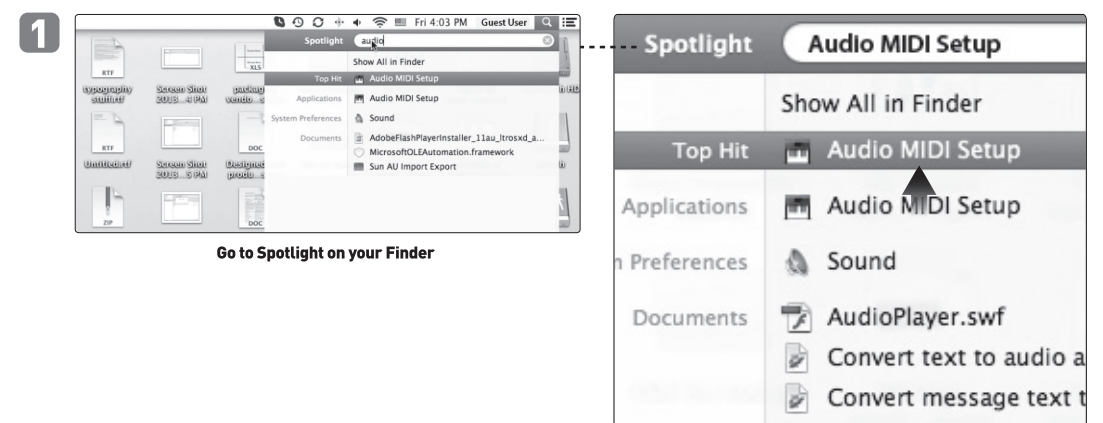
Mac Setup



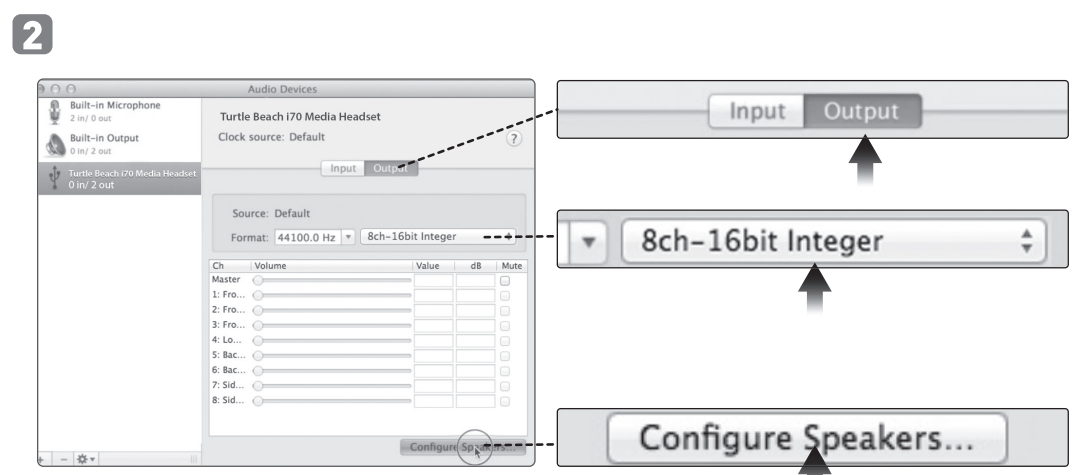
Mac Setup (continued)



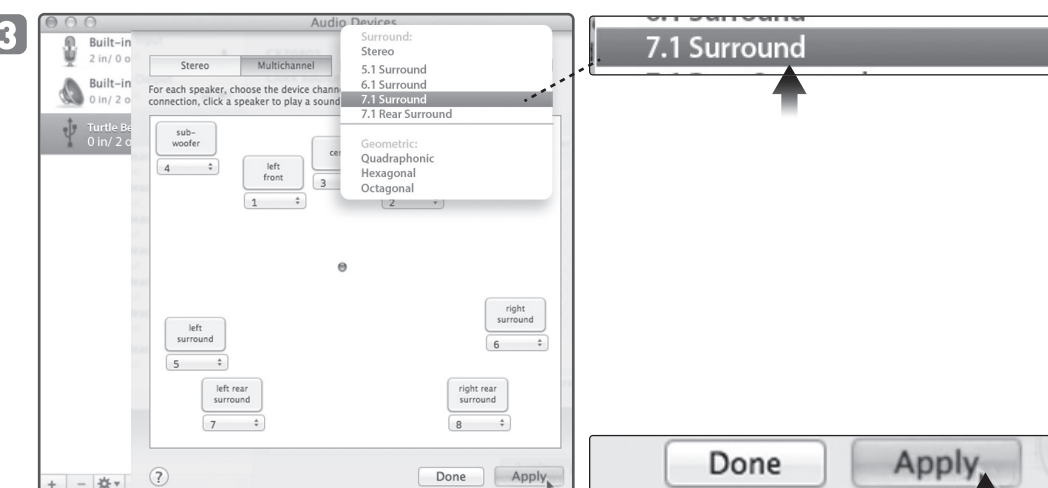
Surround Configuration



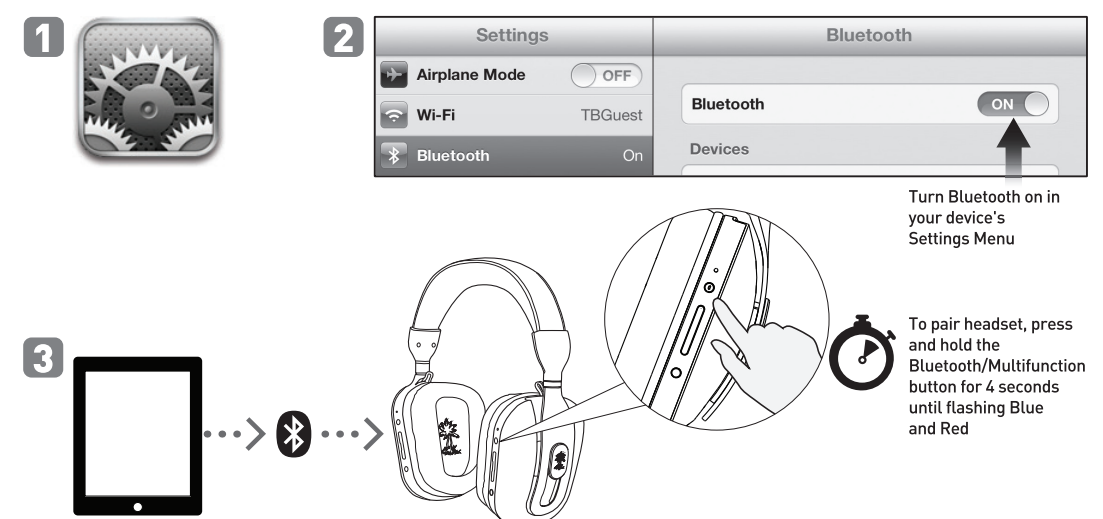
Bluetooth Pairing



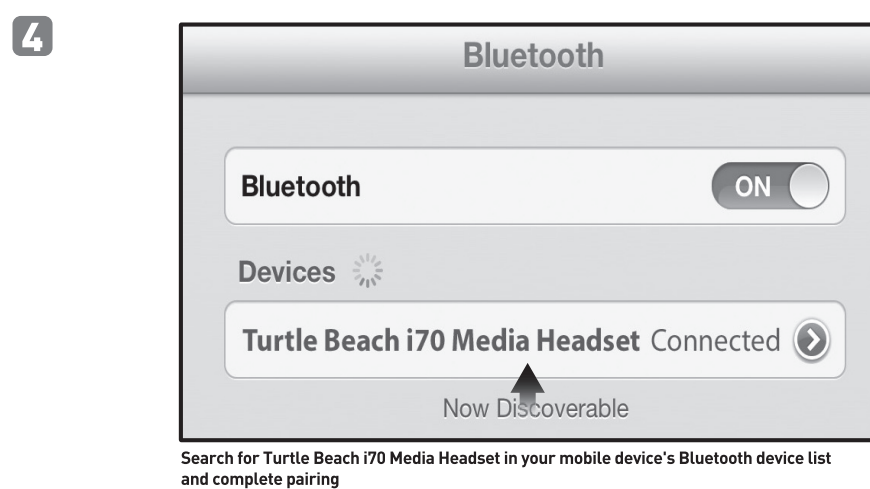
Surround Configuration (continued)



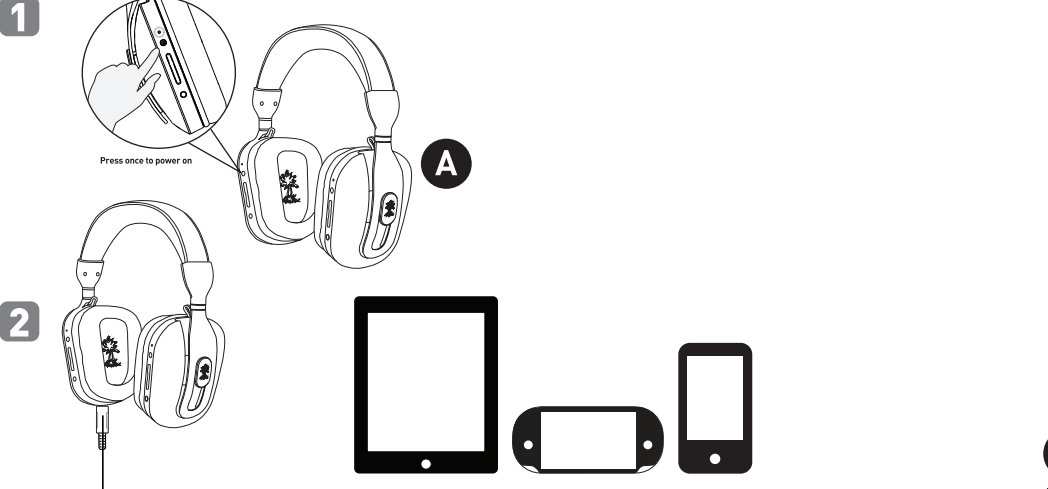
Bluetooth Pairing



Bluetooth Pairing



Wired Setup



Regulatory Compliance Statements for the EAR FORCE i70 RX & TX Models

Federal Communications Commission (FCC) Compliance Notice
Class B Interference Statement: This equipment has been tested and found to comply with the limits for a Class B digital device, pursuant to Part 15 of the FCC Rules. These limits are designed to provide reasonable protection against harmful interference in a residential installation. This equipment generates, uses, and can radiate radio frequency energy and, if not installed and used in accordance with the instructions, may cause harmful interference to radio communications. However, there is no guarantee that interference will not occur in a particular installation. If this equipment does cause harmful interference to radio or television reception, which can be determined by turning the equipment off and on, the user is encouraged to try to correct the interference by one or more of the following measures:
 - Reorient or relocate the receiving antenna.
 - Increase the separation between the equipment and receiver.
 - Connect the equipment to an outlet on a circuit different from that to which the receiver is connected.
 - Consult the dealer or an experienced radio/TV technician for help.
FCC Caution: This device complies with Part 15 of the FCC Rules. Operation is subject to the following two conditions: (1) This device may not cause harmful interference, and (2) this device must accept any interference received, including interference that may cause undesired operation.
RF Radiation Exposure & Hazard Statement: To ensure compliance with FCC RF exposure requirements, this device must be installed in a location such that the antenna of the device will be greater than 2 cm (0.8 in.) from all persons. Using higher gain antennas and types of antennas not covered under the FCC certification of this product is not allowed. Installers of the radio and end users of the product must adhere to the installation instructions provided in this manual. This transmitter must not be co-located or operated in conjunction with any other antenna or transmitter.
Deployment Statement: This product is certified for indoor deployment only in the 5150 - 5250 MHz band. Do not install or use this product outdoors in that frequency band in the United States.
Canadian ICES Statement: IC: 8874, TETCO: 8, 3P74, TETCO: 1 This device complies with ICES-003 and RSS-210 of Industry Canada.
 Operation is subject to the following two conditions: 1. This device may not cause interference, and 2. This device must accept any interference, including interference that may cause undesired operation of the device.
 Ce dispositif est conforme aux normes NMB03 et CMB-210 d'Industrie Canada.
 1. L'utilisation de ce dispositif est autorisée seulement aux conditions suivantes: 2. Il ne doit pas produire de brouillage et l'utilisateur du dispositif doit être prêt à accepter tout brouillage radioélectrique reçu, même si ce brouillage est susceptible de compromettre son fonctionnement du dispositif.
RF Radiation Exposure & Hazard Statement: To ensure compliance with RSS-102 RF exposure requirements, this device must be installed in a location such that the antenna of the device will be greater than 2 cm (0.8 in.) away from all persons. Using higher gain antennas and types of antennas not covered under the IC certification of this product is not allowed. Installers of the radio and end users of the product must adhere to the installation instructions provided in this manual. This transmitter must not be co-located or operated in conjunction with any other antenna or transmitter.
Expulsion aux radiations RF & Menaces de danger: Pour assurer la conformité avec les exigences RSS-102 d'exposition aux RF (Radio Fréquences), cet appareil doit être installé dans un endroit où l'antenne de l'appareil sera située à une distance de plus de 2 cm (0,8 in.) de toutes personnes. L'utilisation d'antennes à gain plus élevé ou de types d'antennes qui ne sont pas couvertes en vertu de la certification IC de ce produit n'est pas autorisée. Les installateurs de la radio et les utilisateurs du produit doivent se conformer aux instructions d'installation fournies dans ce manuel. Cet émetteur ne doit pas être co-implanté ou exploité en conjonction avec toute autre antenne ou transmetteur.
Deployment Statement: This product is certified for indoor deployment only in the 5150 - 5250 MHz band. Do not install or use this product outdoors in that frequency band in Canada.
Déclaration de conformité: Ce produit est certifié pour le déploiement à l'intérieur tout en respectant les limites de cette bande de fréquences: 5150 - 5250 MHz. Ne pas installer ou utiliser ce produit à l'extérieur au Canada, si cette bande de fréquences ne peut être reconnue.
European Union and European Fair Trade Association Regulatory Compliance
 This equipment may be operated in the countries that comprise the member countries of the European Union and the European Fair Trade Association.
 Declaration of Conformity
 Marking by this symbol.
 Indicates compliance with the Essential Requirements of the RPTTE Directive of the European Union (1999/5/EC). This equipment meets the following conformance standards:
 Safety EN 60950-1:2006 + A11:2009 + A1:2010 + A12:2011 IT Mark License IEC 60950-1:2006 (Red Edition) - Ann 1:2009 IEC Scheme Report/Certificate: EN 60932-1:2006, EN60932-2:2006
 EMC EN 55022:2010, EN 55014:1997 + A1:2011 + A2:2011 IT Mark License IEC 60950-1:2006 (Red Edition) - Ann 1:2009 IEC Scheme Report/Certificate: EN 60932-1:2006, EN60932-2:2006
 RoHS EN 50320:2011, EN 50320:2011
 S&R EN 62311:2008
 Environmental: Low Voltage Directive 2006/96/EC, RoHS 2011/65/EU, WEEE 2002/96/EC, REACH 2006/1819/EC, Packaging 94/62/EC, Battery 2006/46/EC.
 This symbol on the product or its packaging indicates that this product must not be disposed of with your other household waste. Instead, it is your responsibility to dispose of your waste equipment by handing it over to a designated collection point for the recycling of waste electrical and electronic equipment. The separate collection and recycling of your waste equipment at the time of disposal will help conserve natural resources and ensure that it is recycled in a manner that protects human health and the environment. For more information about where you can drop-off your waste for recycling, please contact your local authority, or where you purchased your product.