



## LEARNING LAPTOP

### User's Manual



vtech®

MARVEL

MARVEL  
KIDS.COM

MARVEL, Super Hero Squad: TM & © 2010 Marvel Entertainment, Inc. and its subsidiaries. Licensed by Marvel Characters B.V. [www.marvel.com](http://www.marvel.com). All rights reserved.

Dear Parent,

At **VTech**®, we know how important the first day of school is for your child. To help prepare preschoolers for this important event, **VTech**® has developed the **Preschool Learning**™ series of interactive toys.

**Preschool Learning**™ features fun characters and inviting school themes that use technology to capture a child's attention and teach important preschool skills like spelling, counting and the alphabet. These vital skills are taught in a way that's both fun and highly engaging to maintain a child's interest. Children will also be introduced to fun school subjects such as art class, music class and even recess! With **Preschool Learning**™, learning is fun from day one!

At **VTech**®, we know that a child has the ability to do great things. That's why all of our electronic learning products are uniquely designed to develop a child's mind and allow them to learn to the best of their ability. We thank you for trusting **VTech**® with the important job of helping your child learn and grow!

Sincerely,

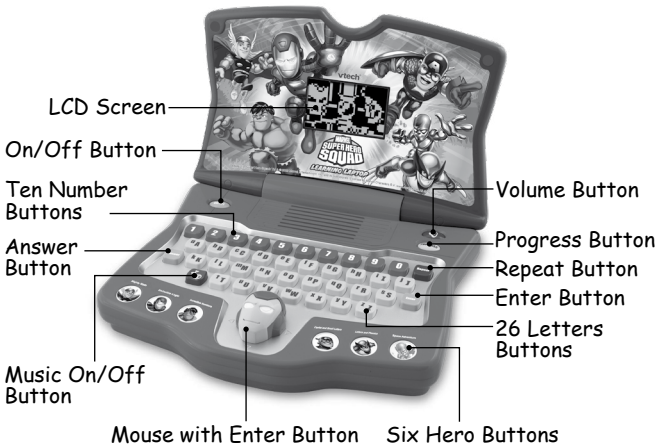
Your friends at **VTech**®

To learn more about **Preschool Learning**™ series and other **VTech**® toys, visit [www.vtechkids.com](http://www.vtechkids.com)

# INTRODUCTION

Thank you for purchasing the VTech® Super Hero Squad Learning Laptop!

Your child will love to learn letters and phonics, numbers, counting and lots more with the Super Hero Squad Learning Laptop. With twelve learning activities and two modes of play, this laptop will help improve memory skills and introduce age-appropriate curriculum. Special Super Hero Squad character buttons provide additional fun and encouragement.



## INCLUDED IN THIS PACKAGE

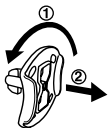
- One VTech® Super Hero Squad Learning Laptop
- One instruction manual

**WARNING:** All packing materials such as tape, plastic sheets, wire ties and tags are not part of this toy, and should be discarded for your child's safety.

### Demo strip removal:

When the product is taken out of the packaging, please remove the demo strip from the unit to activate normal play mode.

### Unlock the packaging locks:

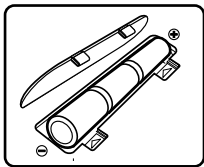


- ① Rotate the packaging locks 90 degrees counter-clockwise.
- ② Pull out the packaging locks.

## GETTING STARTED

### BATTERY INSTALLATION

1. Make sure the unit is **OFF**.
2. Locate the battery cover on the bottom of the unit.
3. Open the battery cover.
4. Install three new "AA" (AM-3/LR6) batteries into the compartment as illustrated. (The use of new, alkaline batteries is recommended for maximum performance.)
5. Replace the battery cover.



### BATTERY NOTICE

- The use of new alkaline batteries is recommended for maximum performance;
- Non-rechargeable batteries are not to be recharged.
- Rechargeable batteries are to be removed from the toy before being charged (if removable).
- Rechargeable batteries are only to be charged under adult supervision (if removable).
- Do not mix old and new batteries.
- Do not mix batteries of different types: alkaline, standard (carbon-zinc) or rechargeable (nickel-cadmium)

- Only batteries of the same or equivalent type as recommended are to be used;
- Batteries are to be inserted with the correct polarity.
- Exhausted batteries are to be removed from the toy.
- The supply terminals are not to be short-circuited.
- The toy is not to be connected to more than the recommended number of power supplies.
- Do not dispose of batteries in fire.

**WE DO NOT RECOMMEND THE USE OF RECHARGEABLE BATTERIES.**

## PRODUCT FEATURES

### 1. ON/OFF BUTTON



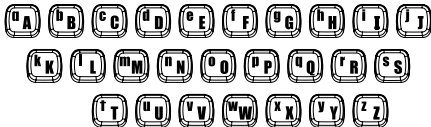
To turn the unit on, press the **On/Off** button. Press the **On/Off** button again to turn the unit off.

### 2. NUMBER BUTTONS



Press the number buttons to learn numbers or to answer number questions.

### 3. LETTER BUTTONS



Press the letter buttons to learn letters or to answer letter questions.

### 4. REPEAT BUTTON



Press this button to hear the instructions repeated.

## 5. PROGRESS BUTTON

Press the Progress button to see how many fractals you've collected. For more details on the fractals, please see the section THE INFINITY SWORD AND FRACTALS below.

## 6. VOLUME BUTTON

Press the Volume button to adjust the volume.

## 7. ANSWER BUTTON

Press this button to hear the answer to the current question.

## 8. MUSIC ON/OFF BUTTON

Press this button to turn the background music off. Press this button again to turn the music on.

## 9. HERO BUTTONS



Press a Hero button to choose which hero's games you want to play.

## 10. CURSOR MOUSE

Move the mouse Up, Down, Left or Right to make a selection. Press the Enter button on the top of the mouse to confirm.

## 11. AUTOMATIC SHUT-OFF



To preserve battery life, the **VTech® Super Hero Squad Learning Laptop** will automatically turn off after several minutes without input. The unit can be turned on again by pressing the **On/Off** button.

The unit will also automatically shut off when your batteries are very low. A warning will be displayed on screen as a reminder to change your batteries.



# HOW TO PLAY



## TURNING THE UNIT ON AND OFF

Press  to turn the unit **ON**. Press  again to turn the unit **OFF**.

## ACTIVITY SELECTION

When the unit is turned **ON**, you will see a short opening animation before entering the hero selection menu. Use the mouse to select a hero and press Enter to confirm. Or press a Hero button to enter directly into the activity menu for that hero.

## TWO MODES OF PLAY

Each activity offers two modes so that the player can adjust the level of difficulty. Choose Easy () or Difficult () mode at the beginning of each game. Use the mouse to make your selection and press Enter to confirm.

## THE INFINITY SWORD AND FRACTALS

When Iron Man and Dr. Doom fought over the most powerful weapon in the universe, the Infinity Sword, it broke into many little pieces, called fractals, which scattered everywhere. Now, Dr. Doom is searching for the fractals so he can put the sword back together and use its power to conquer the world. To stop that from happening, Iron Man has assembled a special team of heroes called the Super Hero Squad. The Squad needs to find the fractals before Dr. Doom does. Help them collect fractals by playing the games. Every time you successfully complete an activity (by scoring 80 points or more) you will earn a new fractal. Collect all twelve fractals to complete the sword. Press the Progress button at any time to see the number of fractals you've collected so far.

# ACTIVITIES:

Your VTech® Super Hero Squad Learning Laptop offers a total of twelve activities with two modes of play.

## Thor Button - Mighty Math

### 1. Lightning Strike

The Absorbing Man thinks he can absorb the power of Thor's lightning. Let's see how many lightning bolts it will take to prove him wrong. Listen to the sound of thunder and count the lightning bolts Thor makes; then type in the correct number on the keyboard.



**Easy mode:** Counting from 1-9.

**Difficult mode:** Counting from 10-20.

### 2. Prison Break

Dr. Doom has locked Thor in prison, and Thor is trying to break free by knocking down the prison door. There is a double-sided door shown on the screen. Each side of the door has a certain number of dents in it caused by Thor hitting the door with his hammer. Help Thor break through the door by adding up the objects on each side; then type in the answer on the keyboard. Answer correctly, and Thor will burst through the door.



**Easy mode:** Addition from 1-9.

**Difficult mode:** Addition from 10-20.



## Iron Man Button - Invincible Logic

### 1. Spot the Impostor

Dr. Doom has used the power of a fractal to disguise himself as a member of the Super Hero Squad, but his disguise isn't perfect. There is a slight difference between his disguised appearance and the look of the real hero. Choose the picture that's different to expose Dr. Doom. Use the Mouse to scroll through the pictures and press Enter to make your selection.

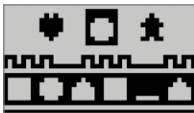


**Easy mode:** Three choices and two chances.

**Difficult mode:** Five choices and three chances.

### 2. Great Wall Mystery

Iron Man's locator device tells him there's a fractal hidden in the Great Wall, but he doesn't know where it is. Help him figure it out by choosing the shape that completes the pattern.



**Easy mode:** Simple patterns.

**Difficult mode:** More complicated patterns.

## Hulk Button - Incredible Numbers

### 1. Number Baseball

Hulk is playing baseball with Dr. Doom. Help Hulk hit a home run by choosing the number that comes next.

**Easy mode:** Number order 1-9.

**Difficult mode:** Number order 10-20.



## 2. Number Leap

Hulk is jumping from building to building, trying to find a fractal in Super Hero City, but he doesn't know the way to go. Help him choose the right direction by selecting the bigger or smaller number.



**Easy mode:** Number order 1 - 9. Use the mouse or the keyboard to answer.

**Difficult mode:** Number order 10 - 20. Use the mouse to answer.

## Captain America Button - Capital and Small Letters

### 1. Robot Raid

Dr. Doom has sent an army of robots to attack Captain America. Help Captain America destroy the robots by choosing the letter that doesn't belong.



**Easy mode:** Four robots, odd letter out is a small letter.

**Difficult mode:** Four robots, odd letter out is a capital letter.

### 2. Letter Shield

Captain America is holding his shield and trying to defend himself against the attacks of Dr. Doom. Look at the letter on Captain America's shield; then find the matching capital or small letter to deflect Dr. Doom's energy blast.



**Easy mode:** The letter on the shield is capital, and the three answer choices are small letters.

**Difficult mode:** The letter on the shield is small, and the three answer choices are capital letters.

## Wolverine Button - Letters and Phonics

### 1. Phonics Ride

Wolverine is riding his motorcycle in pursuit of a fractal when he comes to a crossroads. Help him drive in the correct direction by choosing the letter that matches the given phonics sound.



**Easy mode:** Two letter choices and one chance to answer.

**Difficult mode:** Four letter choices and three chances to answer.

### 2. Letter Train

A fractal is hidden on a runaway train, and Wolverine needs help searching for it. Find the letter that comes next in alphabetical order to open the train cars so that Wolverine can see what's inside.



**Easy mode:** Capital letters, find the letter that comes last in order.

**Difficult mode:** Small letters, find the letter that comes in between two other letters.

## Silver Surfer Button - Space Adventure

### 1. Shining Stars

There is a fractal hiding in space in the form of a star. Silver Surfer is watching the stars and trying to figure out which one is the fractal. Help him find the fractal by playing this simple memory matching game. Watch the stars blink one by one and try to remember the order in which they blink. Then, it's your turn to repeat the sequence. Use the mouse to click on each star in order.



**Easy mode:** 3-4 stars in the sequence.

**Difficult mode:** 4-6 stars in the sequence.

## 2. Space Quest

Dr. Doom has found a fractal, and he's making his escape. Help the Silver Surfer catch him before it's too late. Use the mouse to control the Silver Surfer and avoid the obstacles.



**Easy mode:** Less obstacles, five chances.

**Difficult mode:** More obstacles, three chances.

## CARE & MAINTENANCE

1. Keep the unit clean by wiping it with a slightly damp cloth.
2. Keep the unit out of direct sunlight and away from any direct heat source.
3. Remove the batteries when the unit is not in use for an extended period of time.
4. Do not drop the unit on a hard surface and do not expose the unit to excess moisture.

## TROUBLESHOOTING

If for some reason the program/activity stops working, then please follow these steps:

1. Turn the unit **OFF**.
2. Interrupt the power supply by removing the batteries.
3. Let the unit stand for a few minutes, then replace the batteries.
4. Turn the unit back **ON**. The unit will now be ready to play again.
5. If the unit still does not work, replace with an entire set of new batteries.

# TECHNICAL SUPPORT

If you have a problem that cannot be solved by using this manual, we encourage you to visit us online or contact our Consumer Services Department with any problems and/or suggestions that you might have. A support representative will be happy to assist you.

Before requesting support, please be ready to provide or include the information below:

- The name of your product or model number (the model number is typically located on the back or bottom of your product).
- The actual error message or problem you are experiencing.
- The actions you took right before the error message or problem occurred.

Internet: [www.vtechkids.com](http://www.vtechkids.com)

Phone: 1-800-521-2010 in the U.S. or 1-877-352-8697 in Canada

## OTHER INFO

**VTech®** Electronics North America, L.L.C. and its suppliers assume no responsibility for any damage or loss resulting from the use of this handbook. **VTech®** Electronics North America, L.L.C. and its suppliers assume no responsibility for any loss or claims by third parties that may arise through the use of this software. **VTech®** Electronics North America, L.L.C. and its suppliers assume no responsibility for any damage or loss caused by deletion of data as a result of malfunction, dead battery, or repairs. Be sure to make backup copies of important data on other media to protect against data loss.

**COMPANY** : **VTech®** Electronics North America, L.L.C.

**ADDRESS** : 1155 W. Dundee Road, Suite 130, Arlington Heights, IL 60004, USA

**TEL NO.** : 1-800-521-2010 in the U.S. or 1-877-352-8697 in Canada

## NOTE:

This equipment has been tested and found to comply with the limits for a Class B digital device, pursuant to Part 15 of the FCC Rules. These limits are designed to provide reasonable protection against harmful interference in a residential installation. This equipment generates, uses and can radiate radio frequency energy and, if not installed and used in accordance with the instructions, may cause harmful interference to radio communications. However, there is no guarantee that interference will not occur in a particular installation.

If this equipment does cause harmful interference to radio or television reception, which can be determined by turning the equipment off and on, the user is encouraged to try to correct the interference by one or more of the following measures:

- Reorient or relocate the receiving antenna.
- Increase the separation between the equipment and receiver.
- Connect the equipment into an outlet on a circuit different from that to which the receiver is connected.
- Consult the dealer or an experienced radio/TV technician for help.

**Caution :** changes or modifications not expressly approved by the party responsible for compliance could void the user's authority to operate the equipment.

### IMPORTANT NOTE:

Creating and developing **VTech® Super Hero Squad Learning Laptop** products is accompanied by a responsibility that we at **VTech®** take very seriously. We make every effort to ensure the accuracy of the information which forms the value of our products. However, errors sometimes can occur. It is important for you to know that we stand behind our products and encourage you to call our Consumer Services Department at 1-800-521-2010 in the U.S. or 1-877-352-8697 in Canada with any problems and/or suggestions that you might have. A service representative will be happy to help you.