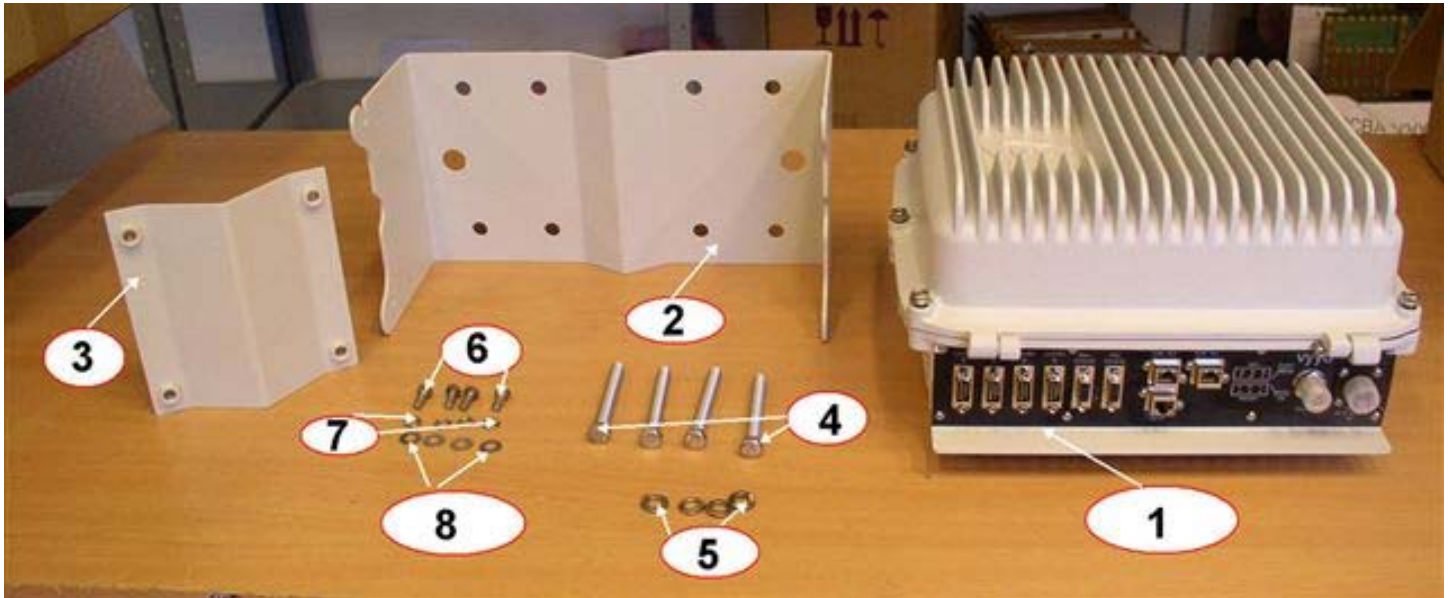


Installation process of pole mount for V290

1. General

The installation process shows the steps how to hang the V290 on Walls and poles. The V290 unit weight is about 12 Kg and not friendly with hard trembling and falling down there for the installer men have to be skilled with operation as details blrow.

2. Details part list of Pole mount kit

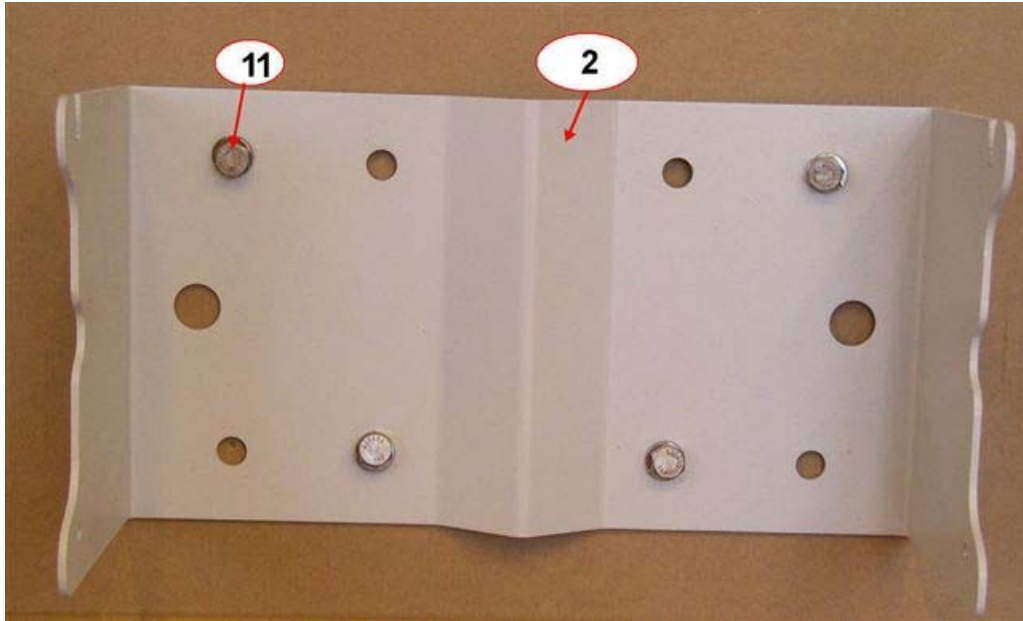


Balloon	Description	No' of parts	Remarks
1	V290 unit	1	
2	Main bracket V290	1	
3	Pole mount hanging bracket	1	
4	Screw Hex HD SST 3/8-16U	4	
5	Washer SST Lock 3/8	4	
6	Screw Hex HD SST 1/4-20U	4	
7	Spring Washer SST Lock 1/4	4	
8	Washer SST Flat 1/4	4	
9	Screw 1/4 with Spring and Flat Washer	4	Balloons No' 6, 7, 8
10	Screw 3/8 with Spring Washer		Balloons No' 4, 5
11	Wall screws	4	The weight of the V290 is 12-13Kg

3. Wall mounting procedure

The procedure below shows the steps of hanging the V290 on the wall. The screws must be carrying a minimum of 15 Kg in stable position.

3.1 Assemble the Main bracket to the wall with 4 Wall screws verify the screws are tightly as well and the **groove is upside**, the description of the balloons see the table above section 2.



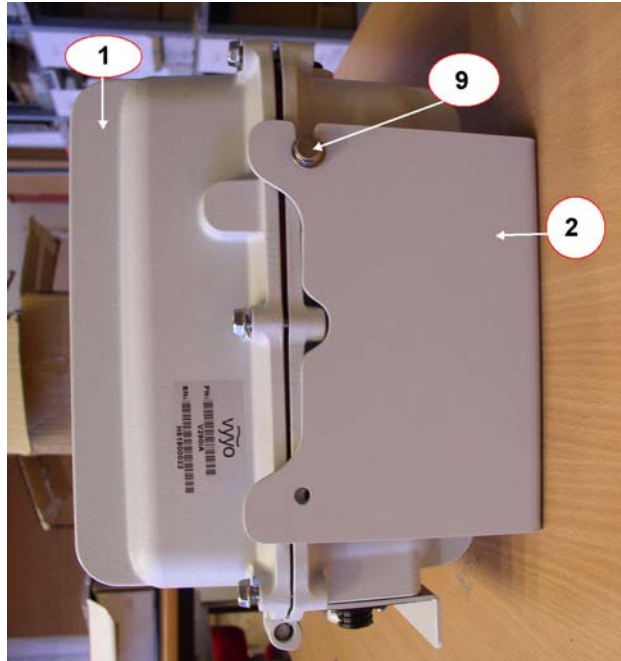
3.2 Assemble the spring washer and flat washer on the screws as shown the picture, the Balloon description see the table above section 2.



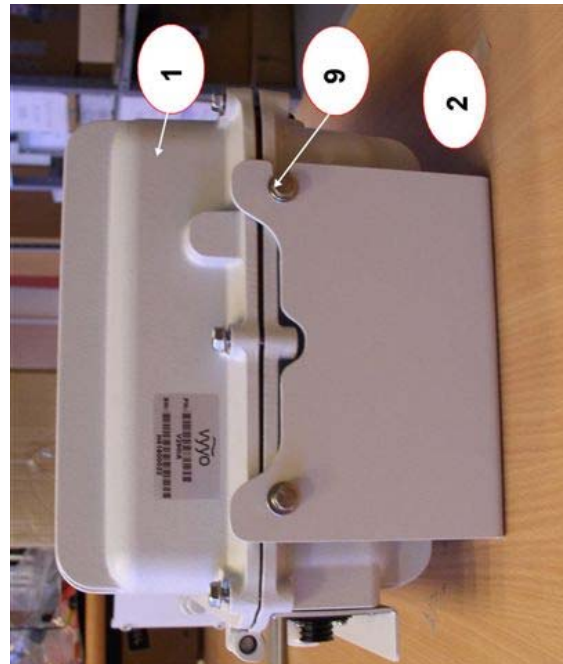
3.3 Assemble two screws (Balloon 9) in the side of V290 (**with only 2-3 circles**) as shown the pictures of front and rear side, the Balloon description see the table above section 2.

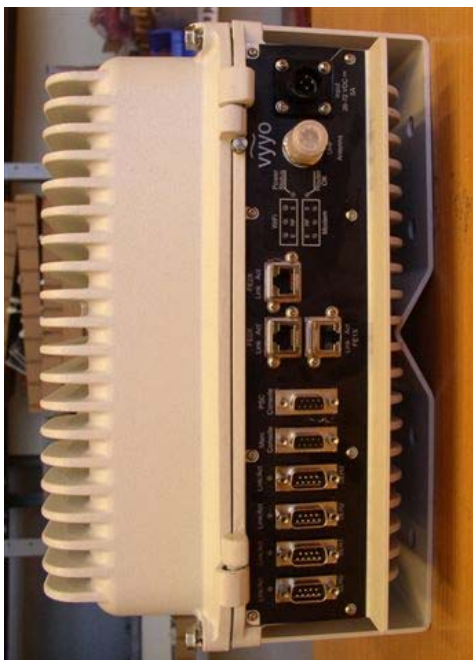


3.4 Assemble the V290 unit to the Main bracket by insert in very carefully the V290 from the top threw the groove in the way that the V290 hanged on the screws (Balloons 9).



3.5 Add two screws (balloon 9) to the bottom unit and close all the four screws tightly as well.





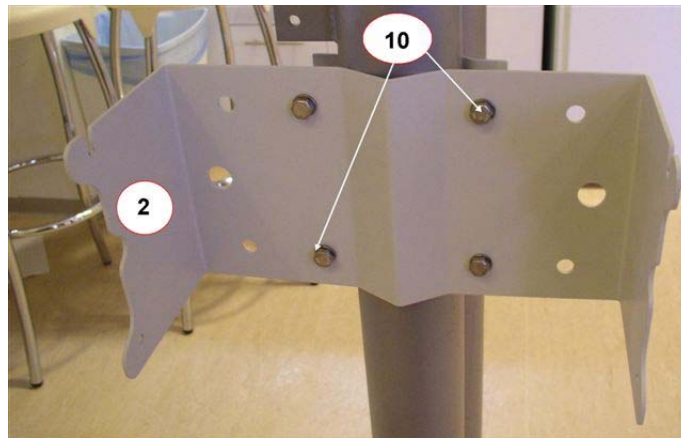
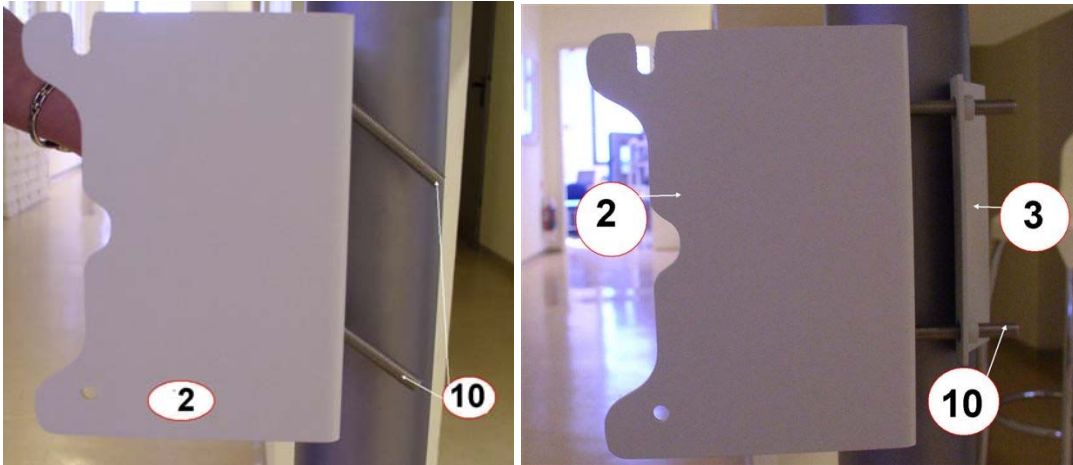
4. Pole mounting procedure

The procedure below shows the steps of hanging the V290 on the pole.

- 4.1 Assemble the spring washer on the screws as shown the picture, the Balloon (4, 5, 10) description see the table above section 2.



4.2 Assemble the Main bracket to the pole with 4 screws (see Balloons 4, 5 and 10) connected to pole mount hanging bracket (balloon 3) and close the screws very tightly, verify the **groove of the main bracket is upside**, the description of the balloons see the table above section 2.

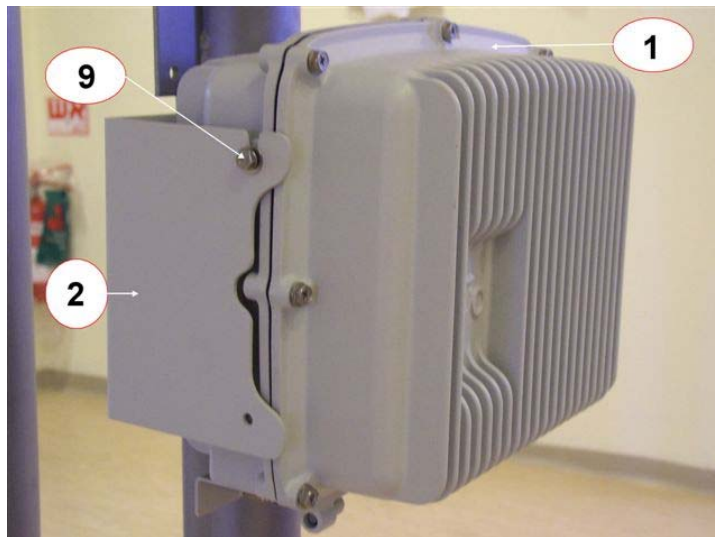


4.3 Assemble two screws (Balloon 9) in the side of V290 (**with only 2-3 circles**) as shown the pictures of front and rear side, the Balloon description see the table above section 2.

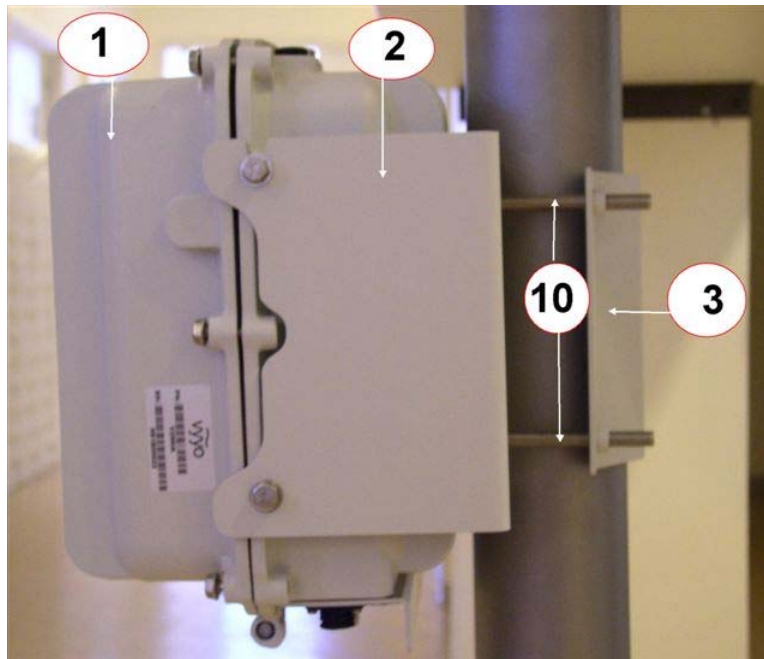




4.4 Assemble the V290 unit to the Main bracket by insert in very carefully the V290 from the top threw the groove in the way that the V290 hanged on the screws (Balloons 9).



4.5 Add two screws (balloon 9) to the bottom unit and close all the four screws tightly as well



5. Assemble GND wire with Ring terminal on the grounding screw (see the screw size in balloon 9 of the table in section 2) that placed on the V290.

