

Users Manual

Pen Pad

Flying Board



The R&TTE Directive



We, the manufacturer (WALTOP International Corp.) hereby declare that this equipment (Bluetooth Pen Pad- Flying Pad), model RSK-T06 is in compliance with the essential requirements and other relevant provisions of Directive 1995/5/EC.

FCC Caution

This device complies with Part 15 of the FCC rules. Operation is subject to the following two conditions

1. This device may not cause harmful interference, and
 2. This device must accept any interference received, including interference that may cause undesired operation.
- FCC RF Radiation Exposure Statement: The equipment complies with FCC RF radiation exposure limits set for the fore an uncontrolled environment.
 - This Transmitter must not be co-located or operated in conjunction with any other antenna or transmitter.
 - Any changes or modifications to this unit not expressly approved by the party responsible for compliance could void the user authority to operate the equipment.

Federal Communication Commission Interference Statement

This equipment has been tested and found to comply with the limits for a Class B digital device, pursuant to Part 15 of the FCC Rules. These limits are designed to provide reasonable protection against harmful interference in a residential installation. This equipment generates, uses and can radiate radio frequency energy and, if not installed and used in accordance with the instructions, may cause harmful interference to radio communications. However, there is no guarantee that interference will not occur in a particular installation. If this equipment does cause harmful interference to radio or television reception, which can be determined by turning the equipment off and on, the user is encouraged to try to correct the interference by one of the following measures:

- Reorient or relocate the receiving antenna.
- Increase the separation between the equipment and receiver.
- Connect the equipment into an outlet on a circuit different from that to which the receiver is connected.
- Consult the dealer or an experienced radio/TV technician for help.

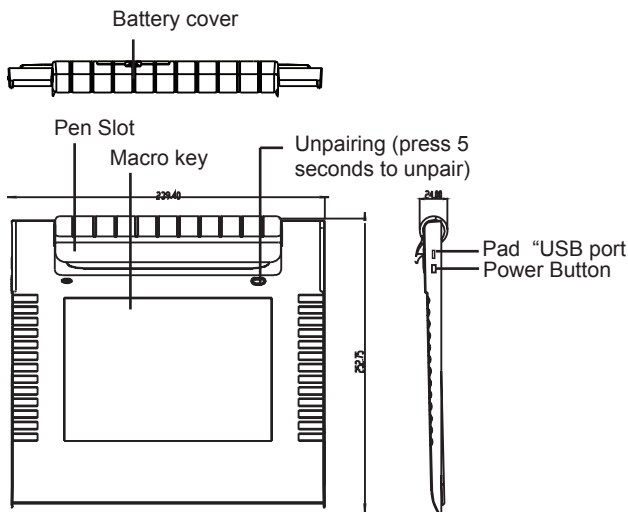
Contents

The R&TTE Directive	1
FCC Caution	1
Federal Communication Commission Interference Statement	2
Introduction	4
— Hardware introduction	4
— Function introduction	5
— How to change the battery	5
— How to replace the Pen Refill	6
— Software Introduction of Bluetooth Pen Pad Manager	7
— Wireless mode	8
— Wired mode	8
— LED Indicator information	8
— USB mode	9
Important information for you to read!	10
Installation	11
— Wired mode	11
— Wireless mode	12
How to Unpairing	27
Troubleshooting	29
Product Specification	31
Bluetooth Pen Pad	31
Maintenance	33
Environment	34

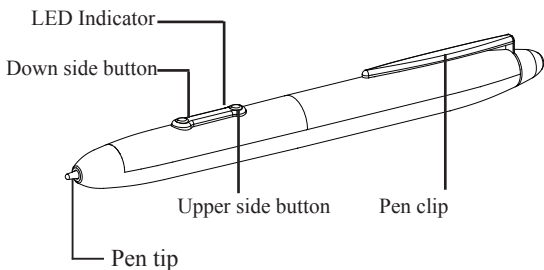
Introduction

Thank you for purchasing this product. Bluetooth Pen Pad provides two modes of connection with a PC: Wireless mode and wired mode. Both modes provide a convenient working environment. Please note that the setup procedures are different from wired and wireless mode and these will be stressed through this manual.

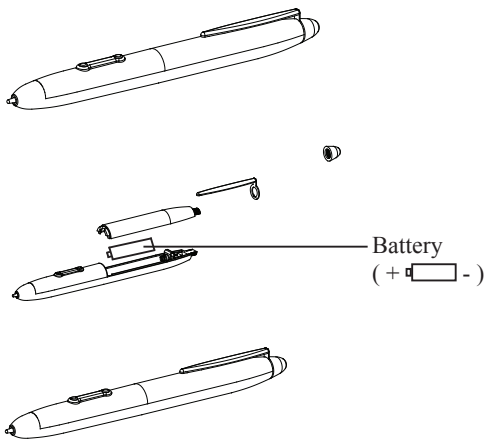
— Hardware introduction



— Function introduction

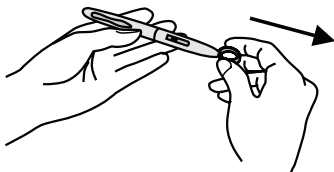


— How to change the battery

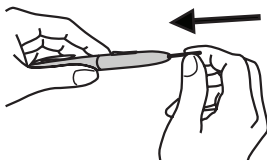


— How to replace the Pen Refill

1. Pull out the used pen tip with the **Refill Tweezers** provided.



2. Insert the **Pen Refill** to the pen.



3. Press firmly on a hard surface for 5 seconds till the **Pen Refill** is locked.



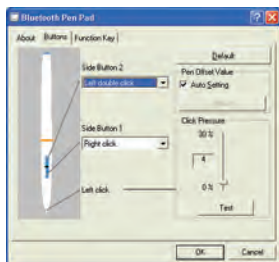
— Software Introduction of Bluetooth Pen Pad Manager

- Pen (Absolute mode) – the area of the Bluetooth Pen Pad corresponds to the whole area of the screen. For example, if place your wireless pen at the top right hand corner the mouse pointer will always be at the top right of the screen.
- Mouse (Relative mode) – acts like a mouse, moves in relation to where the mouse pointer currently is. For example, place your wireless pen anywhere on the pen pad. If you move up, the mouse pointer will follow, regardless of where you start the tablet.

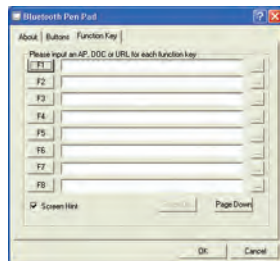


About

There are two buttons on the wireless pen. Each of these can be allocated a mouse action.



Buttons



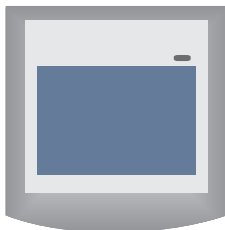
Function Key

— **Wireless mode**

Bluetooth Pen Pad + Bluetooth Adapter on PC

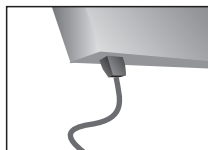
PS.

Make sure that you have powerful batteries in the battery chart and switch the power button to on.



— **Wired mode**

Bluetooth Pen Pad + USB Cable on PC.



— **LED Indicator information**

There are two LED's built in. One is Red and the other is Blue.

Bluetooth mode:

1. When the Bluetooth Tablet is turned on, the two LED will flash once.
2. When the battery power is low, the Red LED will start to flash until the batteries are exhausted. Please change the battery once the Red LED flash.
3. The Blue LED will flash continuously while the Bluetooth link to the PC is active.
4. The Blue LED will be on when the pen is detected within the working area but will be off as soon as the pen touches the tablet.

— USB mode

1. When the USB cable is initially connected to the Tablet, the Red LED will flash once and the Blue LED will flash continuously.
2. The Blue LED will be on when the pen is detected within the working area but will be off as soon as the pen touches the tablet.

	Bluetooth Mode	USB mode
<div>Power on (Bluetooth mode)</div> <div>USB cable plugged (USB mode)</div>	Blue flash once Red flash once	Red flash once Blue flash continuously
Working	Blue flash continuously	Blue flash continuously
Pen within working area	Blue light	Blue light
Pen tip on the working area of tablet	off	off
Low battery	Red light	--

Important information for you to read!

Bluetooth Pen Pad ships with a bundled Broadcom IC Bluetooth device and WIDCOMM Bluetooth Software. We do not test with Bluetooth software from other manufactures, but in many cases, Our Bluetooth Pen Pad will work well with these third party Bluetooth software packages if their device support WIDCOMM Bluetooth Software version 5.0.1.1600. The Important factors to consider are the source of the Bluetooth software and the version of the Bluetooth software.

Nowadays, there are two major Bluetooth suppliers of Bluetooth software for computers running Microsoft Windows. One is Microsoft. Microsoft provides Bluetooth software that run only on Windows XP Service Pack 2 (you have updated your XP to XP Service Pack 2). The other is WIDCOMM. WIDCOMM provides Bluetooth software that runs on all current versions of Microsoft Windows. As a result, we would like to recommend you to install WIDCOMM Bluetooth software in Windows 2000 and XP. Once your computer system is Windows XP Service Pack 2, we would suggest you to adopt Microsoft Bluetooth software directly.

Our Bluetooth Pen Pad tested with bundled Bluetooth Adapter under WIDCOMM Bluetooth software version 5.0.1.1600. It is possible that our Bluetooth Pen Pad will attempt to use existing Bluetooth software and fail, although we have not yet seen this particular circumstance. There is a possible workaround to this situation: Remove your current Bluetooth

software and then, install the WIDCOMM Bluetooth software that shipped with the released CD in the package.

Installation

Please insert the CD-Rom in the package into your CD-ROM Device.

The software will automatically begin. There are three parts in AUTO RUN. One is Bluetooth Pen Pad Driver, another is Bluetooth Software and the other is Application software.

The following guideline is to teach you how to make Bluetooth Pen Pad work in different mode and under different OS systems.



— **Wired mode**

You only need to install Bluetooth Pen Pad Driver and plug USB cable to your PC directly.

STEP 1 Software installation

Please install Bluetooth Pen Pad Driver.

- a. Click “Bluetooth Pen Pad Manager “to start installation
- b. Click “Next”
- c. Click “Finish”

STEP 2 Hardware installation

Please plug the USB cable firmly to Bluetooth Pen Pad and to your PC.

— Wireless mode

You have to install Bluetooth Pen pad Driver and Bluetooth software to complete the necessary steps.

Install Bluetooth Pen Pad Driver

- a. Click “**Bluetooth Pen Pad Manager**” to start installation
- b. Click “Next”
- c. Click “Finish”

Install Bluetooth software

Please reference from the important information (Page 9). We will identify your OS system and enable the Bluetooth software you should install. Please choose the one you can click.

- If Your OS system is Windows XP Service Pack 2, you only need to add Data for Microsoft Bluetooth software.

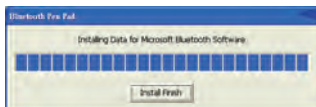
STEP 1 Add the data to Microsoft Bluetooth Software.

(P.S. Before you add the data, please do not plug Bluetooth Adapter into your PC USB port)

Please click “**Above Windows XP Service Pack 2**

– data for Microsoft Bluetooth software”

1. The data will be added into Microsoft Bluetooth software automatically.



2. Please click “finish”.

STEP 2 Hardware installations

3. Please plug the Bluetooth Adapter to your PC now.



4. Finding new Hardware.

5. Welcome to the Found new hardware Wizard.



6. Install the software automaticall.



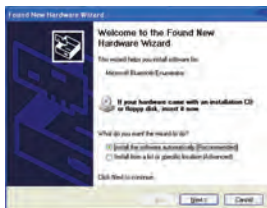
7. Completing the Found New Hardware Wizard. (P.S After that, Bluetooth icon will be showed in Windows System Tray)



8. Finding new Hardware again



9. Welcome to the found new Hardware Wizard



10. Install the software automatically



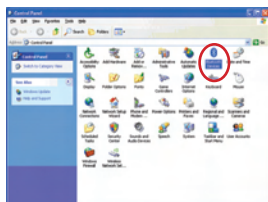
11. Completing the Found New Hardware Wizard. Click “Finish”



STEP 3 Start to Pair Bluetooth Pen Pad

12. Click on the **START** button, the **SETTINGS**, and then select **CONTROL PANEL**.

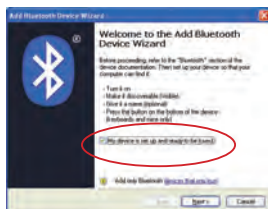
13. In the **CONTROL PANEL**, you can find the **BLUETOOTH DEVICE** icon.



14. Double Click
BLUETOOTH
DEVICE icon. Then,
Please click “**ADD**”



15. Add Bluetooth
Device Wizard.
My Device is
setup and ready to
be found



16. Searching



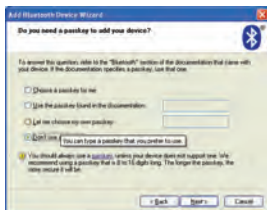
17. Select the Bluetooth Device that you want to add.

Please click “Next”



18. Passkey

Please choose
“Don’t use a
passkey”



19. Connecting



20. Completing

Click “Finish”



21. Bluetooth Device



➤ If your OS system is Windows 2000/XP, you can install WIDCOMM Bluetooth software.

WIDCOMM Bluetooth software setup

STEP 1 Software Installation

1. Click “**Windows 2000/XP – WIDCOMM Bluetooth software**”

2. Welcome
The software will automatically begin. The window welcomes you to install shield Wizard for Bluetooth software.



To continue, click “Next”

3. License Agreement
Read the license agreement, if you accept, select the check button.

To continue, click **“Next”**



4. Locating of installation
If you wish to select another location where the software will be installed, click **“Change”** and select or enter a new location.

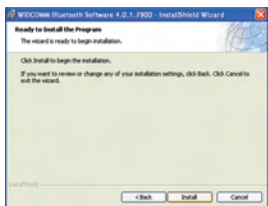


❗ The default location is recommended.

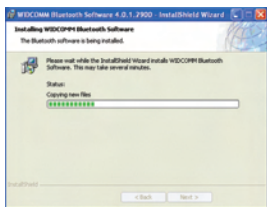
To continue, click **“Next”**

5. Install
You are now ready to install.

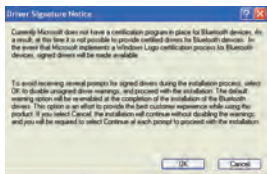
To continue, click **“Install”**



6. Copying
The installation process will now begin. Please wait while files are being copied to your computer. The progress bar will indicate the portion that has been completed.



7. Driver Signature
(Windows XP only)
You will be prompted with a driver Signature Notice.



To continue, click "OK"

8. Device Not Found



At the Bluetooth device not found prompt, directly plug the USB Bluetooth Adapter into an available USB port. Please continue with SETP 2 – Hardware Installation.

STEP 2 Bluetooth Adapter Hardware Installations

- If you have successfully inserted the WIDCOMM Bluetooth software please continue. The green LED (light) on the device will be lit, if Bluetooth Adapter is successfully inserted.

To continue, click “OK ”

10. Finish

Now you have completed the installation of the WIDCOMM Bluetooth software.


To finish the installation, click “Finish”.



11. Restart Windows

If you have not been prompted, please restart windows.



❗ If the software and hardware installation are successful, you will see a Bluetooth with white Bluetooth icon  in the Windows System Tray. A blinking green LED on the Bluetooth Adapter is also successful part of the installation.

STEP 3 Initial Set up (only for the very first time installation)

12. Open My Bluetooth Place



Double-click the My Bluetooth Places on your desktop.

13. Run Initial Bluetooth Configuration

The Initial Bluetooth Configuration Wizard will appear. The default options are recommended. You may uncheck them respectively if you do not wish the My Bluetooth Places icon to be placed.



To continue, click "**Next**"

14. Give your computer a Device Name. The General window will allow you to identify your Bluetooth enabled computer with a name. Enter a unique **computer name**. There may be one name given in the column. You can change the name if you wish to. Select the **computer type**. This will only affect

the icon in which you identify yourself to another Bluetooth user.

To continue, click “Next”



❗ Each Bluetooth device that wishes to connect to your computer must have a unique Computer name (different to all other users connecting).

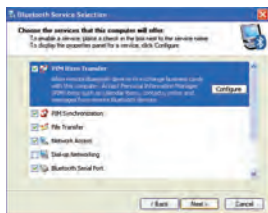
15. Bluetooth Service

The Initial Bluetooth configuration Wizard window will now allow you to enable or disable Bluetooth Services. (Refer to the Bluetooth Services section for information on services.)



16. Enable/ Disable or View Bluetooth Services

The Bluetooth Services Selection will allow you to disable or enable any services that you do not



wish to offer. Disable or enable by clicking one the check box next to the name of the service you wish to alter.

- ☐ :Service enabled
- ☐ : Service disabled.

By default all services are enabled (all check boxes ticked). The default setting is recommended.

❗ You can choose to disable or enable services at any time.

To continue, click “Next”

17. Search and configure other Bluetooth Devices.

Please click “SKIP”. Search and configure Bluetooth Device later. Please **DO NOT** click “Next” for making the installation easily.



18. Completed Setup

You have now completed the initial setup. Your USB Bluetooth Adapter is ready to be used.






To finish, click “Finish”.

STEP 4 Start to Pair Bluetooth Pen Pad

19. Open My Bluetooth Places

Tip: Bluetooth System Tray

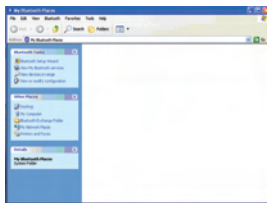
The Bluetooth icon in the Windows Systems Tray indicates the USB Bluetooth Adapter Status.

Enabled	Disabled	Connected
 Blue with White	 Blue with Red	 Blue with Green

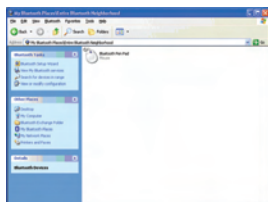
To open My Bluetooth Places, go to your windows desktop and double-click the icon.

20. Searching Bluetooth Pen Pad

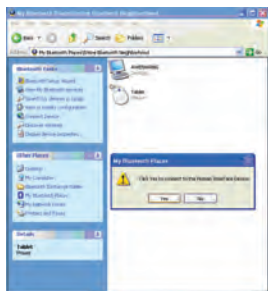
Click **“View devices in Range”** for searching and connect to nearby Bluetooth enabled devices. Then, you can find a icon of **“Bluetooth Pen Pad”**.




Please double-click the Bluetooth Pen Pad. And click “OK”.



❗ Make sure Bluetooth Pen Pad is power on and the Bluetooth Adapter is plugging into PC and the icon in Windows Systems Trays is Blue with White.




❗ The very first time you want to connect Bluetooth Pen Pad to a new PC (or new Adapter). You may need to use your mouse to click the “confirmed icon” and waiting for the PC to recognize Bluetooth Pen Pad.

Once the icon is  , the Bluetooth Pen Pad works now.

If you would like to know more about how to use Bluetooth Adapter, please reference from the user manual of USB Bluetooth Adapter.

How to Unpairing

Once you want to cut down the connection between Bluetooth Pen Pad with your PC. Please follow the next step to unpair.

- ***Windows 2000/XP with WIDCOMM Bluetooth software***
 1. Double click the My Bluetooth Places on your desktop.
 2. Click View Devices in Range.
Now your computer is searching for all the Bluetooth devices in range. Please wait.
 3. Double click  (This icon indicates that the Bluetooth Pen Pad is connected to PC) icon.

The Bluetooth Connection Status Windows will appear.

4. Click Disconnect. Now you can safely disconnect your Bluetooth Pen Pad.

- ***Above Windows XP Service Pack 2 with Microsoft Bluetooth software***

Select Bluetooth Pen Pad, then click Remove to disconnect your Bluetooth Pen Pad.

To make sure to cut down the connection, once you have done the above step from PC side, please also keep pressing the **unpairing** button on the Bluetooth Pen Pad for at least 5 seconds.

Troubleshooting

1. *When I search for my Bluetooth Pen Pad, many devices appear that I do not recognize.*

Because Bluetooth 1.2 class 2 has a range of up to 10 meters, you will detect devices beyond the Bluetooth Pen Pad that you are searching for.

2. *My Bluetooth Pen Pad connection drops out when I use my cordless phone.*

Bluetooth uses the 2.4Ghz unlicensed ISM band, which is the same as some high end cordless phone, video transmitters, and some other wireless devices. Even though Bluetooth uses frequency hopping to prevent interference with these devices at times it may interfere.

3. *My computer does not detect the USB Bluetooth Adapter.*

Please check the power status of your battery or try again. You may need to get a technician to make sure your USB port drivers are installed correctly.

4. *The LED on my Bluetooth Pen Pad does not light up.*

Make sure your battery is workable. Make sure the power switch is on. Or you may have accidentally pressed the unpairing button located just above the right hand corner of the active area of your tablet. If so, switch the tablet off for three seconds, and on again. And try to pair the Bluetooth Pen Pad again!

5. *My pen still does not respond.*

Make sure your battery for pen is workable first.

a. You will need to re-pair the devices. Please see the

pairing section.

b. You will need to restart your PC.

6. *There is a longer than usually delay with my Bluetooth Pen Pad.*

You will need to move closer to your computer and try replacing the batteries. Or you may check whether your PC is stable. Or maybe there are other 2.4G devices interfere now. Try to re-pair again.

7. *I have lost my nib (the tip of my pen)*

Your pen is supplied with two spare nibs, which you can use to replace the tip.

8. *The pressure sensitivity does not seem to work in my application.*

Check that your application supports pressure sensitivity that you are using.

Product Specification

Bluetooth Pen Pad

Item	Description
Technology	Electromagnetic
Bluetooth	Version 1.2 Class 2
Connection Distance	10 meters
Dimension	239*251*30mm
Active Area	6"*4.5"(152mm*114mm)
Weight	493g (545g with batteries)
Writing height	10mm
Macro key	12 (Press 1.5 seconds to work)
Hot key	Unpairing for pushing 5 seconds
Battery	AA battery* 2 (Rechargeable battery suggested)
Battery Life (Duracell Battery)	Continual mode 24 hrs
Power consumption	Writing Time: 77 mA (185mW) Standby Time: 47 mA(113mW)
Power Supply	Wireless: 1.2V AA Battery * 2 USB port when connecting to computers

Connection Interface	Bluetooth Version 1.2 Class 2 USB 1.1 Full speed
Resolution	1000 Lpi
Pen Pressure	512 Levels
Reporter Rate	Bluetooth mode :162 report/per second USB mode :183 report/per second
Bluetooth dongle capacity	Windows 2000/ XP SP1 : only support WIDCOMM driver (5.0.1.1600)which only works with Broadcom chip IC dongle Windows XP SP2 : most of Bluetooth Dongle work well with default Windows Bluetooth driver
Support O/S	Microsoft Windows XP/2000

Pen

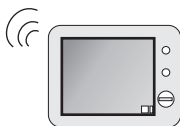
Item	Description
Pen	5V Pen (Support Tablet Monitor also)
Pen Battery	AAA battery * 1 (1.5V)
Pen feature	Power Saving Mode; Low Battery Indicator LED
Proximity	8 mm (minimum)

Maintenance



1. Do not drop, puncture or disassemble the tablet.
2. Remove batteries during long periods between uses.
3. Avoid all contact with water and dry hands before using.
4. Do not expose the tablet to high temperature or leave it in direct sunlight.
5. Avoid pressing hard on the tablet body.

Environment



Environment always influences the receiving quality of your tablet. The best environment for your tablet is where no other cordless products are functioning, such as microwave ovens.

Cement walls and wooden walls absorb radio wave and decrease receiving quality. Open space without barriers is the best environment for your tablet.

Cement Wall

