

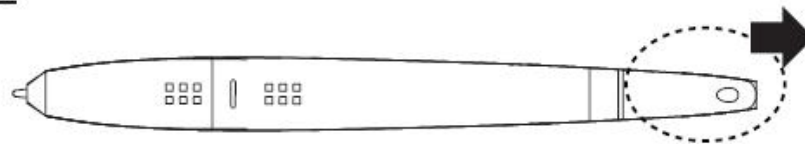
Wand Pen Quick Start Guide

Specification (M/N: W3A-030 PEN)

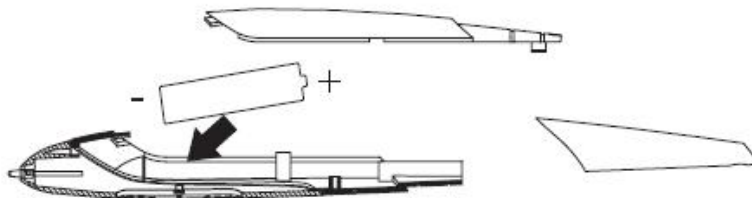
- Battery: AAA Battery
- Battery life: continuing writing 2.5months
- Power saving function:
Get into auto sleeping mode while pen tip without being touched
after 3 minutes later.

How to replace the battery

Step 1



Step 2



Step 3



Placing the CD driver

Place the installation CD in your CD drive.

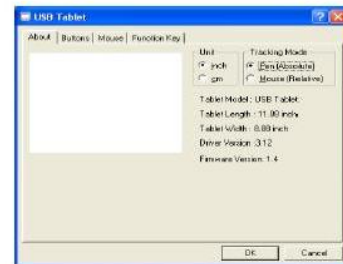
Step 1

Click on the tablet icon at the bottom right of the tool bar
(The tablet icon appears when the cable is plugged in.)



Step 2

You enter the Tablet screen.
To select functions, click on buttons on the tool bar.

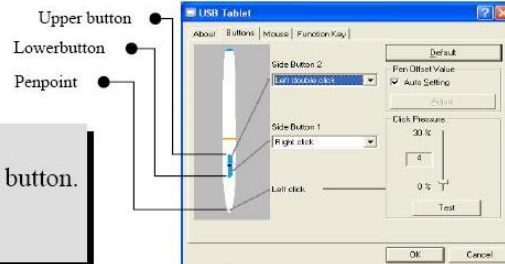


Using the Pen

- ☐ **Side buttons/**
Click on Buttons to customize side buttons.

Default settings

The upper button = left double-click mouse button.
The lower button = right mouse button.
The pen point = left mouse button.

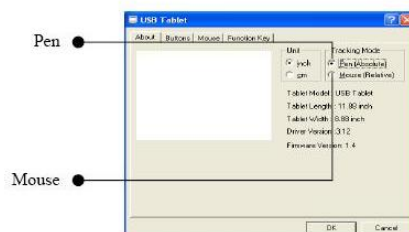


- ☐ **Pressure/**
Move the slide up and down to adjust the pen pressure.

- ☐ **Mouse/**
The pen is used as normal handwriting pen or mouse. To change mode, select "Pen" or "Mouse".



Please put your pen on the hollow of the tablet while idle. If you place the pen on the tablet, the mouse is seriously affected.



Federal Communication Commission Interference Statement

This equipment has been tested and found to comply with the limits for a Class B digital device, pursuant to Part 15 of the FCC Rules. These limits are designed to provide reasonable protection against harmful interference in a residential installation. This equipment generates, uses and can radiate radio frequency energy and, if not installed and used in accordance with the instructions, may cause harmful interference to radio communications. However, there is no guarantee that interference will not occur in a particular installation. If this equipment does cause harmful interference to radio or television reception, which can be determined by turning the equipment off and on, the user is encouraged to try to correct the interference by one of the following measures:

- Reorient or relocate the receiving antenna.
- Increase the separation between the equipment and receiver.
- Connect the equipment into an outlet on a circuit different from that to which the receiver is connected.
- Consult the dealer or an experienced radio/TV technician for help.

This device complies with Part 15 of the FCC Rules. Operation is subject to the following two conditions: (1) This device may not cause harmful interference, and (2) this device must accept any interference received, including interference that may cause undesired operation.

FCC Caution: Any changes or modifications not expressly approved by the party responsible for compliance could void the user's authority to operate this equipment.