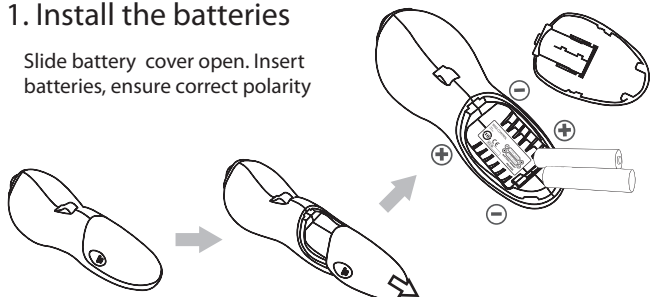


Experience a new way to use a mouse!

- Take full control of your presentation anywhere in the room!
- Unleash your presentation skills and excel in your professional life!
- Easy to use for anybody in your home!
- Watch Movies, Listen Music, Play Games, anywhere, anytime!

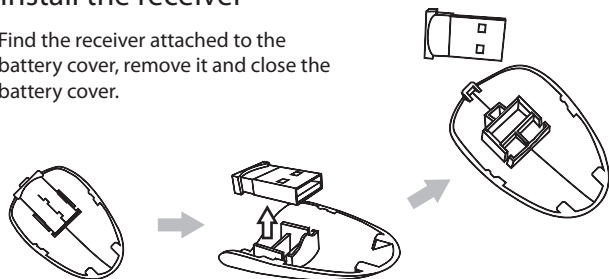
1. Install the batteries

Slide battery cover open. Insert batteries, ensure correct polarity



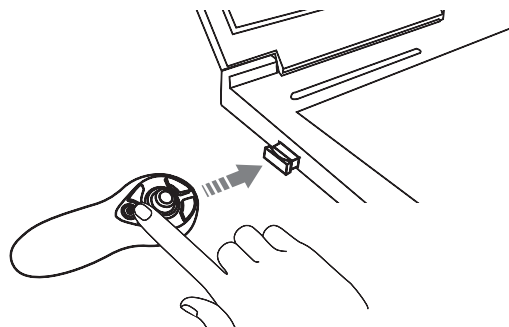
2. Install the receiver

Find the receiver attached to the battery cover, remove it and close the battery cover.



3. Connect the receiver

Plug the receiver and turn on the power by pressing the On/Off button for 3 second, until the Light turns green



Notes: The Receiver is very small and can remain plugged into your computer. If you decide to remove the Receiver, store it inside the Battery compartment.

Frequently Asked Questions:

1. I plugged in the mini-receiver but nothing happens?

Check that the light on the mini-receiver turns on:

- No light means your USB port is not working, try another USB port
- Red light means the mini-receiver is ready but can not see the controller press the On/Off button for 3 second on the controller until you see the green LED turn on.
- Green light means the receiver has connected with the controller and you can start using your controller.

2. I did not find any CD to install the software?

The controller is designed for plug-and-play all the software is included with your operating system. You don't need any additional software.

3. If I forget to turn the controller off, will it turn off automatically?

Yes, the controller turns off, if not used after 45 minutes, if the mini-receiver is unplugged the controller turns off after 3 minutes.

4. What happens if the battery is nearly empty?

Under normal use (1 hour/day) the battery will last for 1 year. A few hours before the controller turns off a red light will start to flash slowly. Replace the batteries with new AAA size Alkaline or fully charged NiMH rechargeable batteries.

5. How can I use the advanced Button functions?

The advanced functions can be selected by pressing two buttons at the same time. Press first the right click button then select for example the Volume(+) button.

6. Can I use the controller with any mini-receiver?

No, the mini-receiver has been matched to your controller to keep you secure and avoid interference. Matching your controller to a different mini-receiver is possible. Visit www.weistech.com.tw to download the software.

7. Can I turn off the controller?

Yes, press the On/Off button for 3 second.

Product Specifications:

Presenter Mouse:

Wireless Link Advanced 2.4GHz wireless technology
Batteries 2 x AAA Alkaline Batteries or NiMH Rechargeable Batteries
Laser Red Laser 650nm, power < 1mWatt

Receiver:

Wireless Link Advanced 2.4GHz wireless technology
Interface USB1.1 or higher

System Requirements:

Windows 98, Windows XP, Windows Vista, Windows 7, Mac OS, USB 1.1 or higher

*Only support basic function/single button operation for MAC (advanced functions are unavailable).



Brand: Weis Design

Model: PC-001

Equipment Name: Wise Control - Presenter Mouse

THIS DEVICE COMPLIES WITH PART 15 OF THE FCC RULES. OPERATION IS SUBJECT TO THE FOLLOWING TWO CONDITIONS: (1) THIS DEVICE MAY NOT CAUSE HARMFUL INTERFERENCE AND (2) THIS DEVICE MUST ACCEPT ANY INTERFERENCE RECEIVED, INCLUDING INTERFERENCE THAT MAY CAUSE UNDESIRE

Federal Communications Commission Requirements

The equipment has been tested and found to comply with the limits for Class B Digital Device, pursuant to part 15 of the FCC Rules. These limits are designed to provide reasonable protection against harmful interference in a residential installation. This equipment generates uses and can radiate radio frequency energy and, if not installed and used in accordance with the instruction, may cause harmful interference to radio communication. However, there is no guarantee that interference will not occur in a particular installation. If this equipment does cause harmful interference to radio or television reception, which can be determined by turning the equipment off and on, the user is encouraged to try to correct the interference by one or more of the following measures:

- Reorient or relocate the receiving antenna.
- Increase the separation between the equipment and receiver.
- Connect the equipment into an outlet on a circuit different from that to which the receiver is connected.
- Consult the dealer or an experienced radio/TV technician for help.

THE CHANGES OR MODIFICATIONS NOT EXPRESSLY APPROVED BY THE PARTY RESPONSIBLE FOR COMPLIANCE COULD VOID THE USER'S AUTHORITY TO OPERATE THE EQUIPMENT.

This device complies with Part 15 of the FCC Rules. Operation is subject to the following two conditions:

- (1) This device may not cause harmful interference, and
- (2) This device must accept any interference received, including interference that may cause undesired operation.

Laser safety warning:

Avoid direct eye contact with the laser. Do not point the laser at mirrors or reflective surfaces. Keep the product away from children. Do not use equipment such as microscope or telescope to see the laser light. Do not open the product to avoid direct exposure to the laser light.

