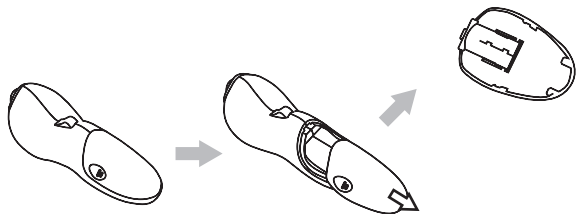


Experience a new way to use a mouse!

- Take full control of your presentation anywhere in the room!
- Unleash your presentation skills and excel in your professional life!
- Easy to use for anybody in your home!
- Watch Movies, Listen Music, Play Games, anywhere, anytime!

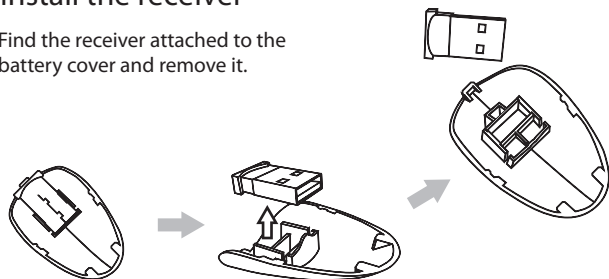
1. Take the receiver

Slide battery cover open.



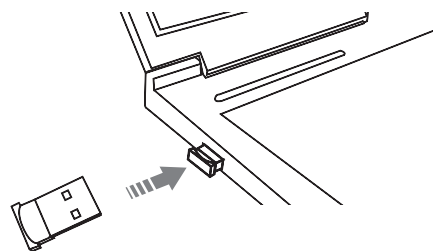
2. Install the receiver

Find the receiver attached to the battery cover and remove it.



3. Connect the receiver

Plug the receiver and turn on the power by pressing the On/Off button for 3 second, untils the Light turns green



Notes: The Receiver is very small and can remain plugged into your computer. If you decide to remove the Receiver, store it inside the Battery compartment.

Frequently Asked Questions:

1. I did not find any CD to install the software?

The controller is designed for plug-and-play all the software is included with your operating system. You don't need any additional software.

2. If I forget to turn the controller off, will it turn off automatically?

Yes, the controller turns off, if not used after 45 minutes, if the mini-receiver is unplugged the controller turns off after 3 minutes.

3. Can I use the controller with any mini-receiver?

No, the mini-receiver has been matched to your controller to keep you secure and avoid interference. Matching your controller to a different mini-receiver is possible. Visit www.weistech.com.tw to download the software.

Product Specifications:

Receiver:
Wireless Link Advanced 2.4GHz wireless technology
Interface USB1.1 or higher



System Requirements:

Windows 98, Windows XP, Windows Vista, Windows 7, Mac OS, USB 1.1 or higher

*Only support basic function/single button operation for MAC (advanced functions are unavailable).

Brand: Weis Design

Model: PC-001

Equipment Name: Wise Control - USB Dongle

THIS DEVICE COMPLIES WITH PART 15 OF THE FCC RULES. OPERATION IS SUBJECT TO THE FOLLOWING TWO CONDITIONS: (1) THIS DEVICE MAY NOT CAUSE HARMFUL INTERFERENCE AND (2) THIS DEVICE MUST ACCEPT ANY INTERFERENCE RECEIVED, INCLUDING INTERFERENCE THAT MAY CAUSE UNDESIRE

Federal Communications Commission Requirements

The equipment has been tested and found to comply with the limits for Class B Digital Device, pursuant to part 15 of the FCC Rules. These limits are designed to provide reasonable protection against harmful interference in a residential installation. This equipment generates uses and can radiate radio frequency energy and, if not installed and used in accordance with the instruction, may cause harmful interference to radio communication. However, there is no guarantee that interference will not occur in a particular installation. If this equipment does cause harmful interference to radio or television reception, which can be determined by turning the equipment off and on, the user is encouraged to try to correct the interference by one or more of the following measures:

- Reorient or relocate the receiving antenna.
- Increase the separation between the equipment and receiver.
- Connect the equipment into an outlet on a circuit different from that to which the receiver is connected.
- Consult the dealer or an experienced radio/TV technician for help.

THE CHANGES OR MODIFICATIONS NOT EXPRESSLY APPROVED BY THE PARTY RESPONSIBLE FOR COMPLIANCE COULD VOID THE USER'S AUTHORITY TO OPERATE THE EQUIPMENT.

This device complies with Part 15 of the FCC Rules. Operation is subject to the following two conditions:

- (1) This device may not cause harmful interference, and
- (2) This device must accept any interference received, including interference that may cause undesired operation.

