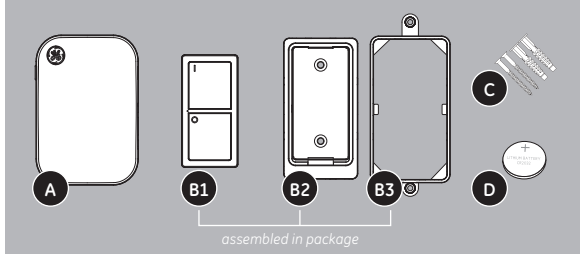




Wireless Remote Lighting Control Manual

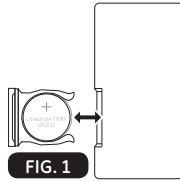


ENCLOSED YOU WILL FIND:

- A. Plug-in receiver
- B1. Remote transmitter
- B2. Remote wall mount
- B3. Wallplate bracket
- C. Mounting screws and anchors
- D. CR2032 battery

INSTALLING BATTERY (REMOTE) [FIG. 1]

- Find the remote and CR2032 battery (included in package).
- Remove transmitter from the remote wall mount — push down and out from the top of the remote ("I" button is on top).
- Turn remote over and pull out battery drawer [FIG. 1].
- Place battery in the drawer with (+) side of the battery facing up.
- Push the battery drawer back into remote.



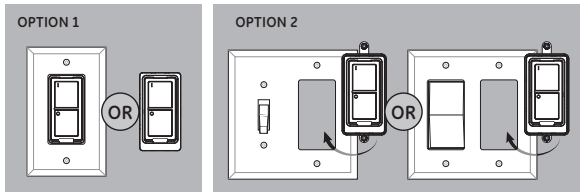
(Red indicator light on the front of remote should light up when a button is pushed.)

INSTALLATION INSTRUCTIONS (ON/OFF RECEIVER)

- Plug lamp or the device to be controlled into the outlet on the side of the receiver. Make sure lamp or device is turned to the ON position.
- Plug the receiver into a standard indoor outlet.
- Wait 5 seconds for the receiver to activate.

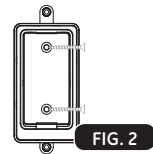
IMPORTANT: It will take 5 seconds from the time the receiver is plugged into the outlet before the remote will be functional.

REMOTE MOUNTING OPTIONS



OPTION 1: WALL MOUNT WITH OR WITHOUT WALLPLATE

- Place remote mount with wallplate bracket where mounting, and mark the remote mount holes on the wall [FIG. 2]. Arrows on the back of remote mount indicate the top [FIG. 3].
- If mounting directly to a stud, drill holes using a 3/32" drill bit (anchors will not be used).
- If mounting to drywall, drill holes using a 1/4" drill bit. Gently tap in anchors.

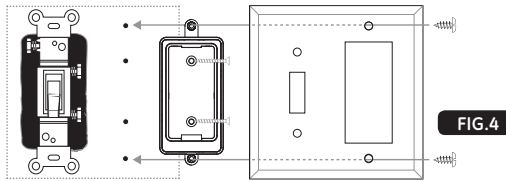


- Remove wallplate bracket if mounting without a wallplate.* Leave the wallplate bracket on if using a wallplate.
*To separate the remote mount from the wallplate bracket, hold the wallplate bracket by the wallplate holes. Turn the wallplate bracket so you are looking at the arrows [FIG. 3]. Gently push the remote out of the wallplate bracket.
- Screw in remote mount using anchor screws. Do not overtighten.
- Screw on wallplate (not included).
- Proceed to INSERTING AND REMOVING REMOTE.

NOTE: If reassembling the wallplate bracket with the remote mount, verify that the arrows line up on the back of the remote mount and wallplate bracket [FIG. 3].

OPTION 2: WALL MOUNT WITH EXISTING WIRED SWITCH

- Screw the remote mount with wallplate bracket onto the wallplate that will be used (not included). This will now be the wallplate bracket assembly.
- Place the wallplate bracket assembly on the existing switch box and mark the remote mount holes.
- If mounting directly to a stud, drill holes using a 3/32" drill bit (anchors will not be used).
- If mounting to drywall, drill holes using a 1/4" drill bit. Gently tap in anchors.
- Place wallplate bracket assembly into place, and screw in the wallplate to the existing switch, as well as screwing the wall mount into the anchors.



INSERTING AND REMOVING REMOTE FROM WALL MOUNT

INSERTING

- Place bottom of remote over the spring tab in the remote bracket, gently press down and push into the remote bracket [FIG. 5].
- Remote should snap in and be held firmly in place.



REMOVING

- Gently push the top of the remote down and out from the remote mount [FIG. 5].

NOTE: May not work with screwless wallplates.

ADDITIONAL MOUNTING OPTIONS

A separate cradle for tabletop mounting is available at www.mySelectSmart.com

PAIRING AND UNPAIRING RECEIVER

(LIGHTING CONTROL COMES PAIRED IN THE PACKAGE. THIS SHOULD ONLY BE NEEDED IF ADDING REMOTES AND/OR RECEIVERS OR IF YOUR LIGHTING CONTROL HAS BECOME UNPAIRED).

PAIRING — LINKING REMOTE TO RECEIVER

- Make sure the receiver is not plugged into the outlet and the remote is close with battery installed.
- Plug receiver into the outlet.
- Within the first 5 seconds after plugging in, press and hold any button on the remote for 2 seconds.
- After 5 seconds from plugging the receiver into the outlet, the remote and receiver will be paired.

UNPAIRING — REMOVING ALL PAIRED DEVICES FROM RECEIVER

- Hold down the ON and the OFF buttons at the same time for 5 seconds.
- Receiver will delete ALL transmitters programmed in it.

MADE IN CHINA

GE is a trademark of General Electric Company and is under license by Jasco Products Company LLC, 10 E. Memorial Rd., Oklahoma City, OK 73114. This Jasco product comes with a 1-year limited warranty. Visit www.byjasco.com for warranty details.

Questions? Contact us at 1-800-654-8483 between 7:00AM—8:00PM CST.

TROUBLESHOOTING

Problem	Corrective Action
Indicator light on remote does not light up red when button is pushed	<ul style="list-style-type: none"> • Battery may be installed incorrectly. Reinstall battery. • Battery may need to be replaced. Install new CR2032 battery.
Indicator light on remote lights up and light does not turn on	<ul style="list-style-type: none"> • Make sure light is turned on and light bulb is working • Receiver may have become un-paired. Pair remote to receiver — see pairing section of manual.
Wallplate does not fit on wall mount correctly	<ul style="list-style-type: none"> • Verify that the arrows on the back of the wallplate bracket and the remote mount line up.
Wallplate screws are too long and hit the wall	<ul style="list-style-type: none"> • Use 1/4" drill bit and drill indentations into drywall where the screws touch the wall.

PLUG-IN RECEIVER

Functional Range.....	up to 150ft
Maximum Tungsten Load.....	360W
Maximum Resistive Load.....	1440W
Rating.....	12A / 120V / 60Hz

REMOTE TRANSMITTER

Functional Range.....	up to 150ft
Battery Type.....	CR2032

* Functional range may be adversely affected by one or more of the following factors: weather, radio frequency interference, low transmitter battery and obstructions between the transmitter and receiver.

Federal Communication Commission Interference Statement:

The equipment has been tested and found to comply with the limits for a class B Digital Device, pursuant to part 15 of the FCC Rules. These limits are designed to provide reasonable protection against harmful interference in a residential installation. This equipment uses, generates and can radiate radio frequency energy and, if not installed and used in accordance with the instructions, may cause harmful interference to radio communications. However, there is no guarantee that interference will not occur in a particular installation. If this equipment does cause harmful interference to radio or television reception, which can be determined by turning the equipment off and on, the user is encouraged to try to correct the interference by one or more of the following measures:

- Reorient or relocate the receiving antenna.
- Increase the separation between the equipment and receiver.
- Connect the equipment into an outlet on a circuit different from that to which the receiver is connected.
- Consult the dealer or an experienced radio/TV technician for help.

FCC Caution:

This device complies with Part 15 of the FCC and Industry Canada license-exempt RSS standard(s). Operation is subject to the following two conditions: (1) this device may not cause harmful interference, and (2) this device must accept any interference received, including interference that may cause undesired operation.

Non-modification Statement:

Any changes or modifications not expressly approved by the party responsible for compliance could void the user's authority to operate this equipment.

ADDITIONAL RECEIVERS/TRANSMITTERS AND CRADLE AVAILABLE AT MYSELECTSMART.COM

⚠ WARNING

CAUTION: TO REDUCE THE RISK OF OVERHEATING AND POSSIBLE DAMAGE TO OTHER EQUIPMENT, DO NOT INSTALL TO CONTROL A MOTOR-OPERATED APPLIANCE, A FLUORESCENT LIGHTING FIXTURE, OR A TRANSFORMER SUPPLIED APPLIANCE.

BATTERY MAY LEAK HARMFUL LIQUIDS OR IGNITABLE MATERIALS OR EXPLODE CAUSING INJURY OR PRODUCT DAMAGE.

- REPLACE FULLY DISCHARGED BATTERY IMMEDIATELY
- REMOVE BATTERY IF PRODUCT IS TO BE UNUSED FOR EXTENDED PERIOD OF TIME

RISK OF ELECTRIC SHOCK

- FULLY INSERT PLUG
- KEEP CHILDREN AWAY
- USE Indoors ONLY
- DO NOT USE IN WET LOCATIONS
- UNPLUG BEFORE CLEANING

RISK OF FIRE

- DO NOT EXCEED ELECTRICAL RATINGS
- DO NOT USE TO CONTROL MOTOR-OPERATED APPLIANCES, TRANSFORMER-SUPPLIED APPLIANCES OR APPLIANCES THAT CONTAIN HEATING ELEMENTS (COOKERS, IRONS, HEATERS, ETC.)



THIS PACKAGE IS RECYCLABLE