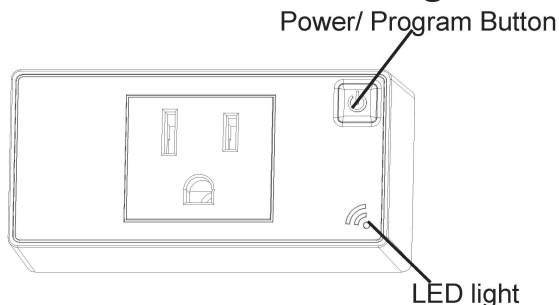


# INSTALLATION INSTRUCTIONS

## WF10FPM WIFI Smart Plug Outlet



### ◆ SPECIFICATIONS

Voltage.....	120V~60Hz
Resistive.....	10A
Protocol.....	IEEE 802.11b/g/n
Wireless Type.....	2.4GHz
System Requirements.....	Android 4.1 or higher, iOS 8 or higher
Operating Temperature.....	32°F~104°F(0°C~40°C)

### ◆ FEATURES

- You can control lights, fans, humidifiers, Air conditioner, and any small appliances in accordance with the Smart Plug's specifications.
- You can Turn your devices on or off at any time or any where have Internet using the free Tuya Smart App on your smartphone.
- You can efficiently conserve energy and save money while using this Smart Plugs.
- Compatible with the Amazon Echo, the free Tuya app compatible with any Android (4.1 and higher) or iOS (iOS 8 and higher) smartphone.

### ◆ DESCRIPTION

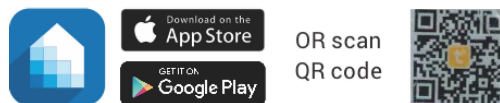
The WF10FPM Plug is our industry's first WIFI Smart Plug outlet, that can make our life more convenient. When the control devices connected to the Smart Plug, whenever or wherever you have Internet with the free Tuya Smart app on your smartphone or tablets to control your device on and off or according to your specific schedules to simulate occupancy or countdown timer enhances safety when you are away from home.

### ◆ MEASURE THE ENERGY USAGE

The WF10FPM Wifi smart plug outlet enables you to measure the energy usage of your appliance. When added to Tuya Smart App, it can display actual consumption(in W) and the accumulated power used (in kWh) in the Tuya Smart App.

### ◆ INITIAL SETUP

1. Download Tuya Smart app from the App Store or Google Play.

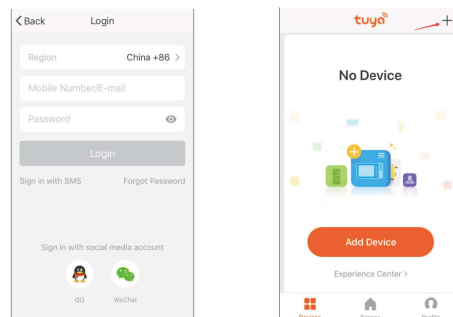


2. Connect mobile device to your 2.4GHz WIFI network, pls note this Smart plug can only connect to 2.4GHz network.

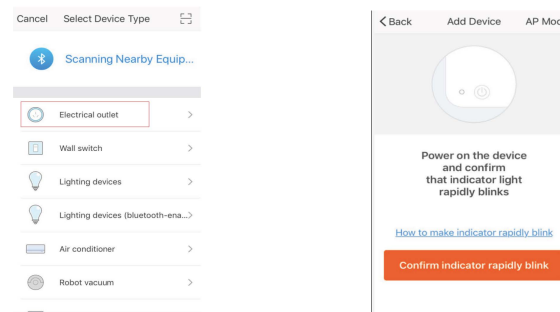


3. Launch Tuya and follow the in-app instructions to connect the Smart Plug to your network.

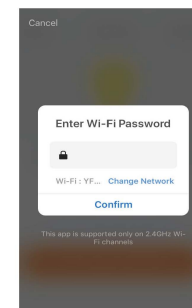
- a. Login the Tuya
- b. Click the button "+"



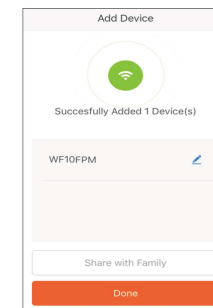
- c. Select the "Electrical outlet"
- d. Click the bottom button



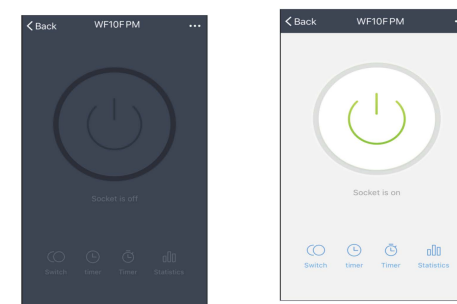
- e. Enter your Wifi password



- f. Finished

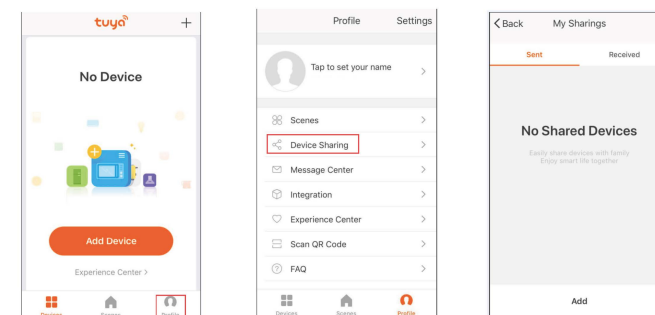


4. When the device is finished add, this WIFI Smart Plug can be opened, closed, countdown and timing.



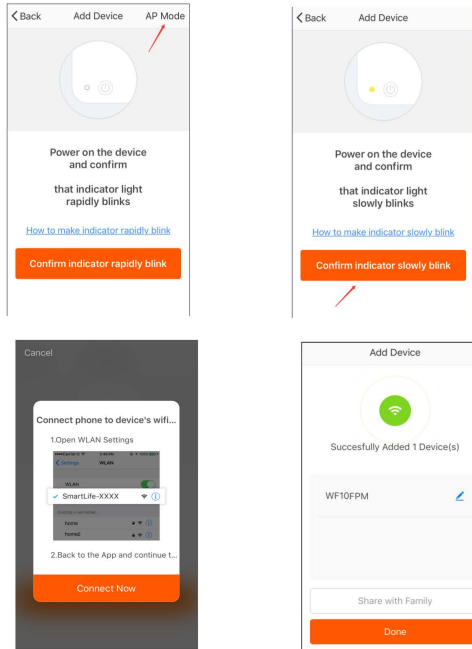
### Please Note:

1. In the process of adding device, you must correctly select the router's WIFI device name and fill in the correct WIFI password, otherwise the device will not be able to add successfully.
2. This Smart Plug can only be paired with one phone device. If you want multiple phones to control the WIFI Smart Plug, click the "profile" then chose the "Device Sharing".



# INSTALLATION INSTRUCTIONS

3. When the device fail to add in the App, please try to enter the AP mode. Before enter the AP mode please press and hold the button 10 times , then the LED indicator in green and slowly blinks.



## ◆ OPERATION

- Press the button, power on then the LED(Blue) turned on.
- Press the button again, power off then the LED turned off.
- Press and hold (for 5 seconds) until the Wi-Fi LED quick blinks Green to initiate the App-Config process.
- Press and hold (for 5 seconds) until the Wi-Fi LED blinks green to factory reset this Smart Plug.

## ◆ LED INDICATION

**Quick Blinking Green:** Connecting to the network.

**Slow Blinking Green:** AP mode.

**Green bright after 2 seconds off:**

Connected to the network.

**Soild Green:** Network normaly or in standby mode.

**Solid Blue:** The WIFI Smart Plug is switched on.

**Off:** The WIFI Smart Plug is switched off.

## ◆ FCC COMPLIANCE STATEMENT

### Federal Communication Commission Interference Statement:

This equipment has been tested and found to comply with the limits for a Class B digital device, pursuant to Part 15 of the FCC Rules. These limits are designed to provide reasonable protection against harmful interference in a residential installation. This equipment generates, uses, and can radiate radio frequency energy and, if not installed and used in accordance with the instructions, may cause harmful interference to radio communications. However, there is no guarantee that interference will not occur in a particular installation. If this equipment does cause harmful interference to radio or television reception, which can be determined by turning the equipment off and on, the user is encouraged to try to correct the interference by one or more of the following measures:

- Reorient or relocate the receiving antenna.
- Increase the separation between the equipment and receiver.
- Connect the equipment into an outlet on a circuit different from that to which the receiver is connected.
- Consult the dealer or an experienced radio/TV technician for help.

This device complies with Part 15 of the FCC Rules. Operation is subject to the following two conditions: 1. This device may not cause interference, and 2. This device must accept any interference received, including interference that may cause undesired operation.

### FCC Radiation Exposure Statement:

This equipment complies with FCC radiation exposure limits set forth for an uncontrolled environment. This equipment should be installed and operated with minimum distance 20cm between the radiator & your body.

RF Exposure: A distance of 20 cm shall be maintained between the antenna and users, and the transmitter module may not be co-located with any other transmitter or antenna.

## ◆ WARRANTY INFORMATION

Our company warranties this product to be free of defects in materials and workmanship for a period of two(2) years. There are no obligations or liabilities on the part of our company for consequential damages arising out of, or in connection with, the use or performance of this product or other indirect damages with respect to loss of property, revenue or profit, or cost of removal, installation or re-installation.

Jul, 2018  
20180702-90012