

USER'S GUIDE

Web Monitor

Model No : MW-700



IMPORTANT SAFEGUARDS

1. Read all of these instructions.

2. Save these instructions for later use.



3. Unplug this monitor from the wall outlet before cleaning. Do not use liquid cleaners or aerosol cleaners. Use a damp cloth for cleaning.

4. Do not use attachments not recommended by the monitor manufacturer as they may cause hazards.

5. Do not use this monitor near water, e.g., near a bathtub, washbowl, kitchen sink, or laundry tub, in a wet basement, or near a swimming pool, etc.



6. Do not place this monitor on an unstable cart, stand, or table. The monitor may fall, causing serious injury to a child or adult, and serious damage to the appliance.



7. Slots and openings in the cabinet and the back or bottom are provided for ventilation, to ensure reliable operation of the monitor, and to protect it from overheating.

These openings must not be blocked or covered. The openings should never be blocked by placing the monitor on a bed, sofa, rug, or other similar surface. This monitor should never be placed near or over a radiator or heat register. This monitor should not be placed in a built-in installation such as a bookcase unless proper ventilation is provided.



8. This monitor should be operated only from the type of power source indicated on the marking label. If you are not sure of the power supplied to your home, consult your monitor dealer or local power company.

pany.



9. This monitor is equipped with a 3-wire grounding-type plug. That is, a plug having a third (grounding) pin. This plug will only fit into a grounding-type power outlet.

This is a safety feature. If you are unable to insert the plug into the outlet, contact your electrician to replace your obsolete outlet. Do not defeat the purpose of the grounding-type plug.



10. Do not allow anything to rest on the power cord. Do not locate this monitor where the cord will be abused by people walking on it.

11. Follow all warnings and instructions marked on the monitor.



12. For added protection for this monitor during a lightning storm, or when it is left unattended and unused for long periods of time, unplug it from the wall outlet. This will prevent damage to the monitor and/or the computer due to lightning and power line surges.

13. Do not overload wall outlets and extension cords as this can result in fire or electric shock.

14. Never push objects of any kind into this monitor through cabinet slots, as they may touch dangerous voltage points or short out parts that could result in a fire or electric shock. Never spill liquid of any kind on the monitor.



15. Do not attempt to service this monitor yourself, as opening or removing covers may expose you to dangerous voltages or other hazards. Refer all servicing to qualified service personnel.

16. Unplug this monitor from the wall outlet and refer servicing to qualified service personnel under the following conditions:

a. When the power cord or plug is damaged or frayed.

b. If liquid has been spilled into the monitor.

c. If the monitor has been exposed to rain or water.

d. If the monitor does not operate normally by following the operating instructions. Adjust only those controls that are covered by the operating instructions, as improper adjustment of other controls may result in damage and will often require extensive work by a qualified technician to restore normal operation.

e. If the monitor has been dropped or the cabinet has been damaged.

f. When the monitor exhibits a distinct change in performance, this indicates a need for service.



17. When replacement parts are required be sure the service technician has used replacement parts specified by the manufacturer that have the same characteristics as the original part. Unauthorized substitutions may result in fire, electric shock, or other hazards.

18. Upon completion of any service or repairs to this monitor, ask the service technician to perform routine safety checks to determine that the monitor is safe to operate.

FEDERAL COMMUNICATIONS COMMISSION RADIO FREQUENCY INTERFERENCE STATEMENT

NOTE : This equipment has been tested and found to comply with the limits for a Class B digital device, pursuant to Part 15 of the FCC Rules. These limits are designed to provide reasonable protection against harmful interference in a residential installation. This equipment generates, uses and can radiate radio frequency energy and, if not installed and used in accordance with the instructions, may cause harmful interference to radio communications. However, there is no guarantee that interference will not occur in a particular installation. If this equipment does cause harmful interference to radio or television reception, which can be determined by turning the equipment off and on, the user is encouraged to try to correct the interference by one or more of the following measures :

- Reorient or relocate the receiving antenna.
- Increase the separation between the equipment and receiver.
- Connect the equipment to an outlet on a circuit different from that to which the receiver is connected.
- Consult the dealer or an experienced radio or TV technician for help.

CAUTION : Any changes or modifications not expressly approved by the party responsible for compliance could void the user's authority to operate the equipment.

CANADIAN NOTICE

This Class B digital apparatus meets all requirements of the Canadian Interference-Causing Equipment Regulations.

AVIS CANADIEN

Cet appareil numérique de la Class B respecte toutes les exigences du Règlement sur le matériel brouilleur du Canada.

WICHTIGE INFORMATIONEN

Bitte lesen Sie alle diese Informationen, bevor Sie das Gerät in Betrieb nehmen! Lesen Sie sich außerdem die Bedienungsanleitung komplett und sorgfältig durch, da nur in diesem Fall eine problemlose Inbetriebnahme erwartet werden kann.

- Achten Sie darauf, daß das Gerät nur in eine 230V Schuko-Steckdose eingesteckt wird.
- Die Steckdose sollte jederzeit frei zugänglich sein um bei einem evtl. auftretenden Notfall das Gerät schnell vom Netz zu trennen.
- Achten Sie desweiteren darauf, daß die Netzanschlußleitung nicht mechanisch beansprucht oder sonstwie beschädigt wird.
- Öffnen Sie das Gerät niemals! Im Inneren befinden sich Teile mit gefährlicher Spannung.
- Bevor Sie das Gerät reinigen, ziehen Sie bitte den Netzstecker aus der Steckdose. Säubern Sie dann das Gerät mit einem feuchten (keinesfalls tropfnassen) Lappen.
- Die in diesem Gerät entstehende Röntgenstrahlung ist ausreichend abgeschirmt (Ortsdosisleistung in 0.1m Abstand weniger als 1.0µ Sv/h). Beschleunigungsspannung maximal 29kV.
- Stellen Sie das Gerät an einem ergonomisch günstigen Ort auf und sorgen Sie dafür, daß der Monitor mit nach ISO 9241 -3, -7, -8 geprüfter Peripherie betrieben wird, da nur unter diesen Umständen ein optimaler ergonomischer Betrieb des Gerätes sichergestellt ist.

Falls Sie dennoch Fragen haben, auf die die Bedienungsanleitung keine hinreichende Antwort geben kann, so kontaktieren Sie bitte den nächsten Fachhändler.

Maschinenlärminformationsverordnung 3. GSGV, 18.01 1991:
Der arbeitsplatzbezogene Schalldruckpegel beträgt 70 dB (A) oder weniger gemäß ISO 7779.

DECLARATION OF CONFORMITY

We, Manufacturer / Importer

DAEWOO ELECTRONICS CO., Ltd
541, 5-Ga , Namdaemoon-Ro , Jung-Gu , Seoul , Korea

declare under our sole responsibility that the product,

Web monitor
MW-700

to which this declaration relates is in conformity with the following standard(s) or other normative document(s)

Safety : EN 60950/1992/A1:1993/A2:1993/
A3:1995/A4:1997
EMC : EN 55022/8.1994/A1:1995/A2:1997
EN 50082-1/1992
EN 61000 -3-2,3/1995

following the provisions of 89/336 EEC-EMC Directive and the provisions of 73/23 EEC-Low Voltage Directive.

Handed over by : S.Lee, Director.

Display Business Division

2001, Seoul

Signature: _____



S.Lee, Director.

Display Business Division.

DAEWOO ELECTRONICS Co., Ltd

Emission Characteristics Tested by SEMKO

A sample of this type has been tested and has shown compliance with the guidelines in the Swedish document MPR II.

This product is also designed for IT power system with phase to phase voltage of 230V.

The power cord is used as a main disconnect device. Disconnect the power cord before servicing. The outlet must be installed near the monitor and must be easily accessible.

The appliance is not intended for use by young children or infirm persons without supervision ;
Young children should be supervised to ensure that they do not play with the appliance.

CONTENTS

1. Product features.....	1
2. Getting started	2
3. Installing the tilt/swivel stand.....	3
4. Connecting to the peripherals	4
5. Terminal installation wizard	
- Starting terminal installation wizard	5
- User's license	5
- Setting IP address	6
- Setting monitor resolution and frequency	8
- Choosing the web-browser.....	9
- Finishing terminal installation wizard.....	11
6. Connection Manager	
- Starting connection manager.....	12
- Adding new connection	13
- RDP connection wizard	14
- ICA connection wizard	17
- Changing connection.....	23
- Deleting connection	24
7. Terminal Setting	
- Starting terminal setting	25
- Product information	25
- Keyboard.....	26
- Screen and volume	26
- Network.....	28
- System	29
- Web setting.....	32
- Terminal security.....	33
8. Operation & Adjustment.....	35
9. Specifications	37
10. Troubleshooting.....	39

1. PRODUCT FEATURES

This product is a new type of Thin Client that is used in conjunction with Windows NT4.0 Terminal Server Edition or Windows 2000 server. Installation of application programs, execution, data processing and storage are all implemented in the server, whereas the terminal is in charge of efficient data exchange with the server, screen display, and inputs by keyboard and mouse. Each user can execute application programs in a separate and protected realm. Each user can establish his/her own environment. Furthermore, this product is showing a new direction: it has a built-in web-browser, Windows media player, and Internet Explorer.

1. Saving work space using All-in one type.
2. Just a few seconds for booting and simplicity for using.
3. Perfect security of data and no more infection from virus hazard due to execution and management of all programs by server.
4. No more need to upgrade software and hardware
(Reducing maintenance cost up to 40% on the basis of 3 years.).
5. 2 times longer lifecycle compared with PC.
6. Simultaneous support to local and terminal mode.
7. Powerful network performance by server based computing.
8. Saving up to 60% electricity consumption contrasted with PC.
9. Outstanding performance and customer-attractive design.

2. GETTING STARTED

This manual explains how to correctly install, operate, and get the best performance from your monitor. Please read this user's guide carefully before installing your monitor, then keep it near your monitor for quick reference.

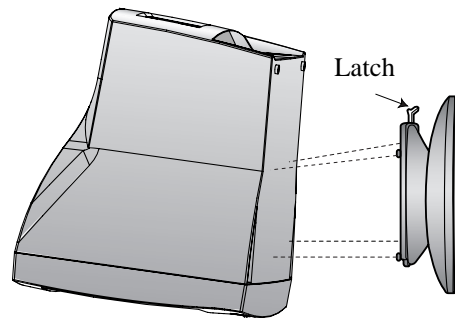
First, please check that the contents of the box corresponds with the following checklist :

- Web monitor
- Web monitor stand
- Power cord
- Keyboard
- Mouse
- User's Guide
- Warranty Card (optional)

If any item is missing or damaged, please contact your dealer. Please keep the box and packing materials so that you may properly store or transport your monitor.

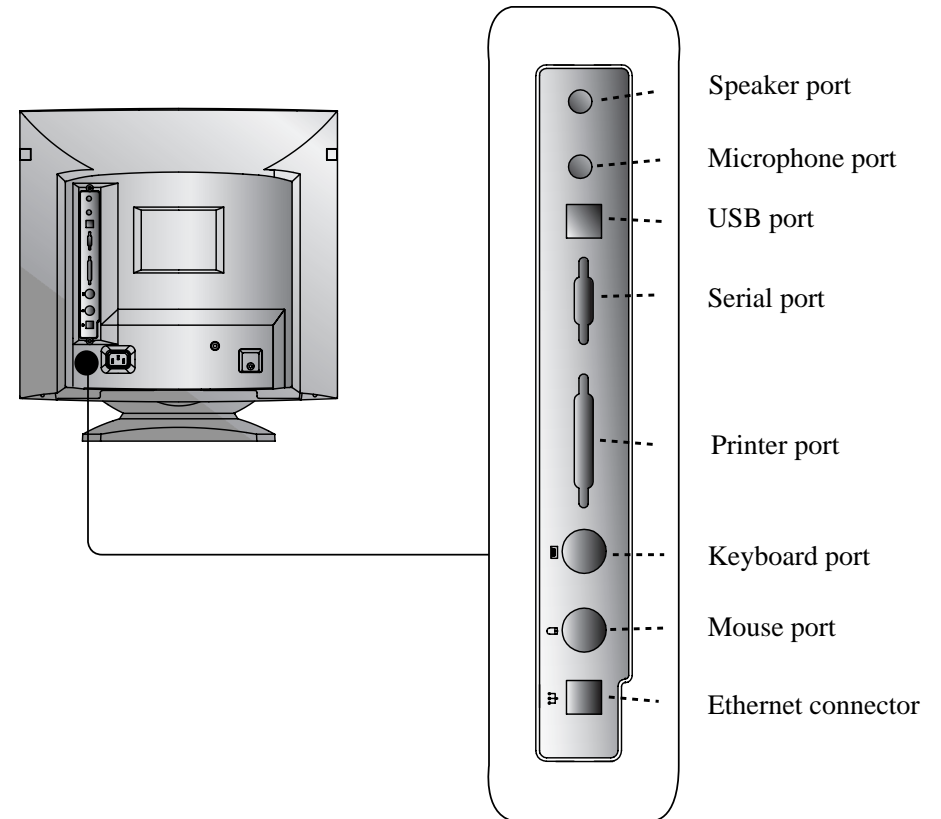
3. INSTALLING THE TILT/SWIVEL STAND

1. Ensure that the power is off to the monitor.
2. Set the monitor face down with the underside facing you. Please be careful not to scratch the monitor screen.
3. Align the four hooks on the stand with the guide holes on the bottom chassis of the monitor.
4. Insert the hooks into the guide holes.
5. Slide the tilt/swivel stand toward the front of the monitor until the latch locks in position.
6. Turn the monitor and the stand upright.



If you want to remove the tilt/swivel stand on the monitor, press the latch and pull the tilt/swivel stand toward the back of the monitor. Lift the stand to separate.

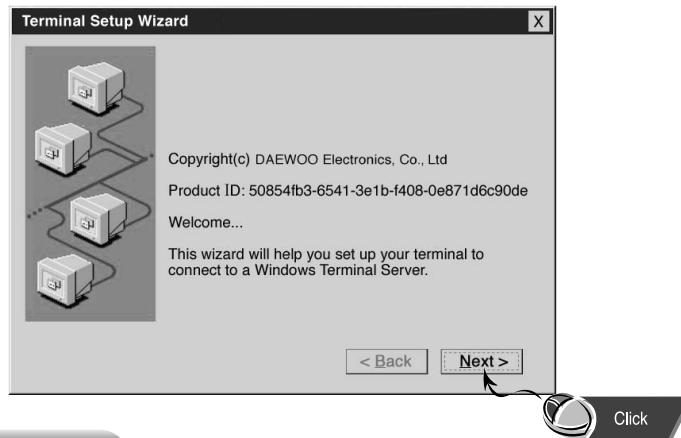
4. CONNECTING TO THE PERIPHERALS



5. TERMINAL INSTALLATION WIZARD

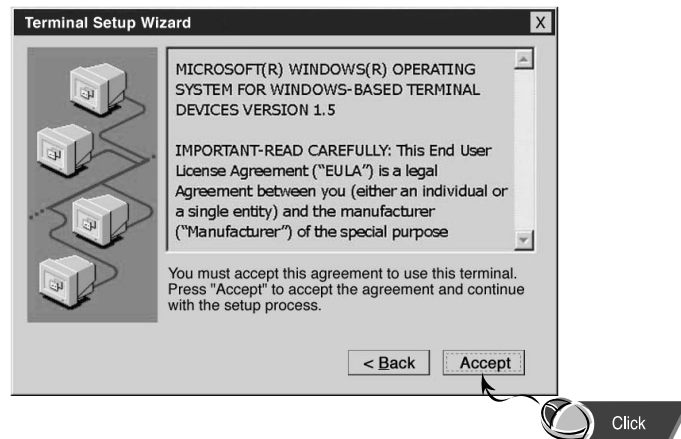
Starting terminal installation wizard

After Setup, when the power is on, terminal installation wizard begins as follows. Users can set the environment necessary for the use of this terminal from the terminal installation wizard.



User's license

This step involves the conditions of software license and the user's agreement.

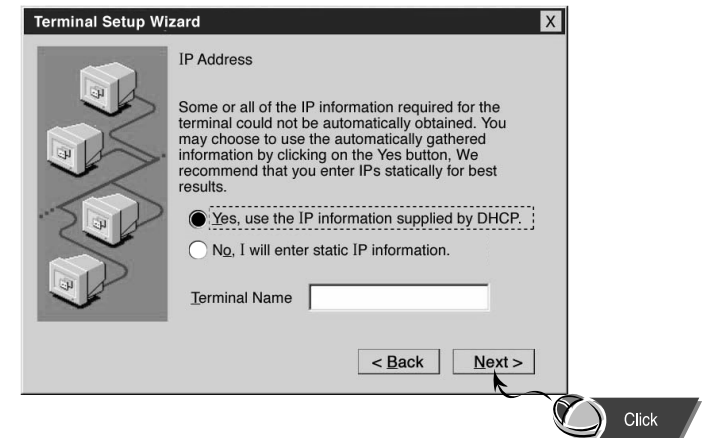


Setting IP address

This step is about specifying the IP address necessary for the use of the terminal.

Using Automatic Setup Function

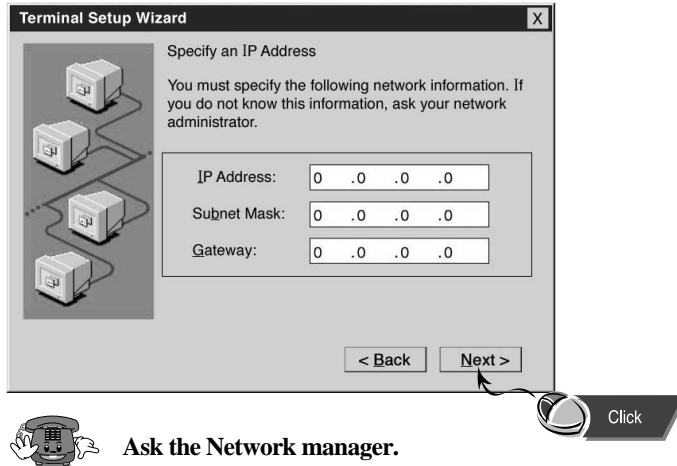
The IP address to be used by the terminal is automatically assigned if the automatic IP address setup function is chosen.



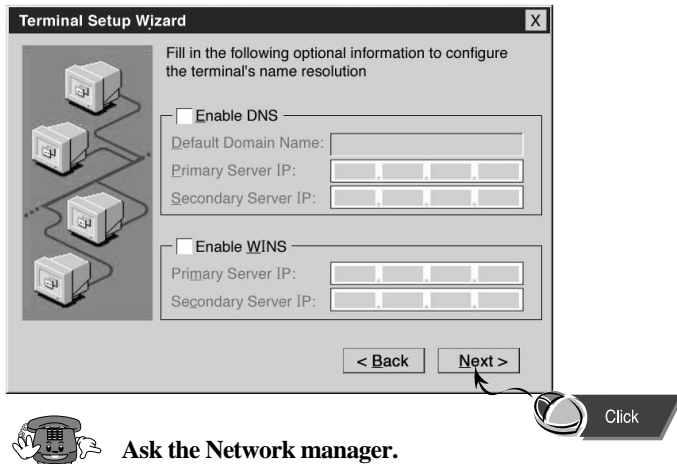
DHCP : Dynamic Host Configuration Protocol

Assigning the IP address

This section should be setup properly by asking the Network Manager. Because “Terminal Name” is a proper name to be identified by the network, preferably a meaningful name must be assigned. The user himself/herself types the IP address and relevant information.

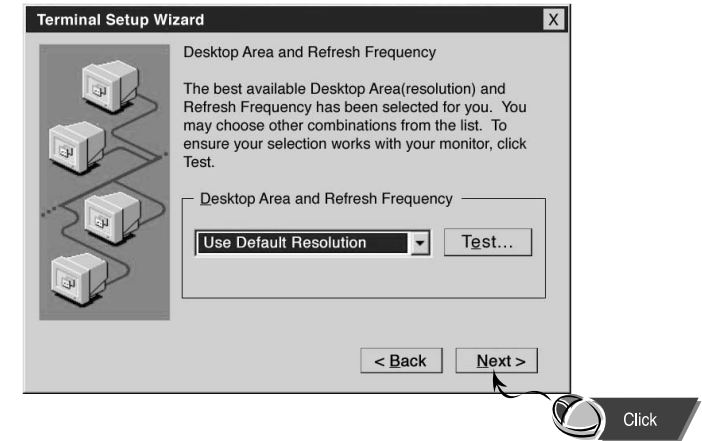


This screen is about the method used by the network to identify the name.



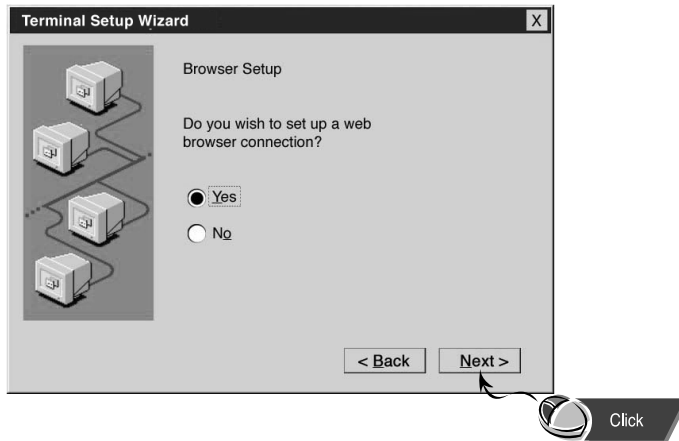
Setting monitor resolution and frequency

In this section, the user sets up the resolution and frequency of the monitor connected to the terminal.



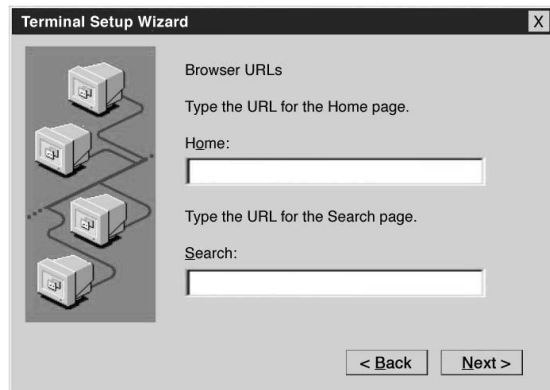
Choosing the web-browser

In this section, the built-in web-browser is set up. To use default setting, please click “No.” To customize setting, please click “Yes.”



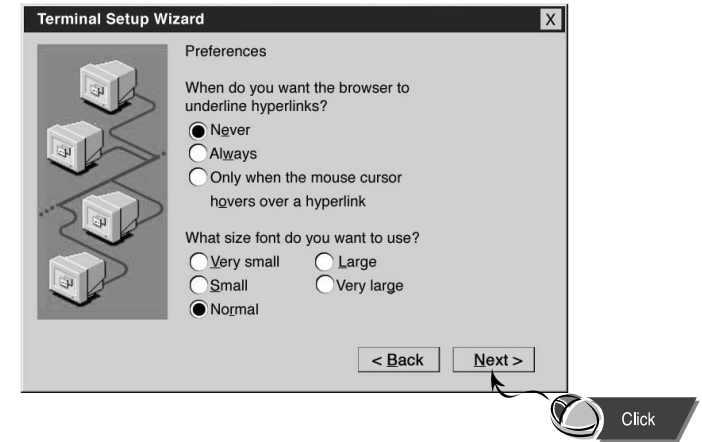
Setting URL (Uniform Resource Locators)

In this section, the home page and default search page of the web-browser are chosen.



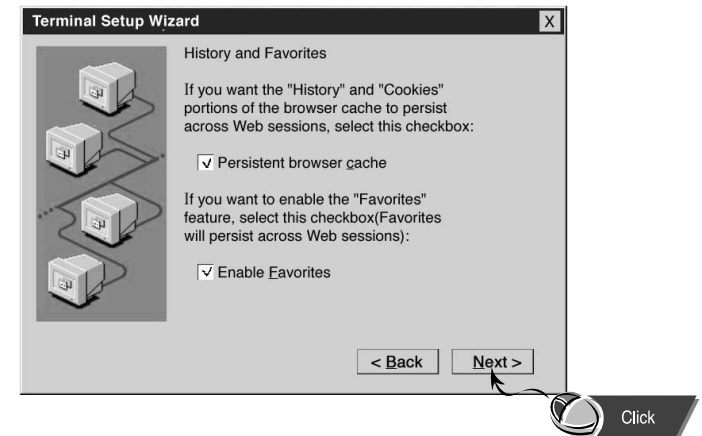
Advanced Setting for the web-browser

In this section, the user chooses the method to indicate hyperlink and the size of the default font.



Cache and bookmark settings

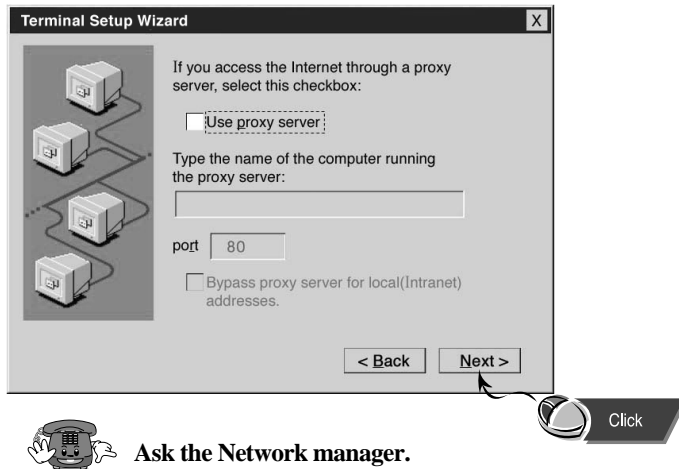
In this section, the user can decide whether he/she will use the cache option to speed up the opening of a previously visited page and the bookmark option to facilitate connection to frequently visited web sites.



6.CONNECTION MANAGER

Proxy server setting

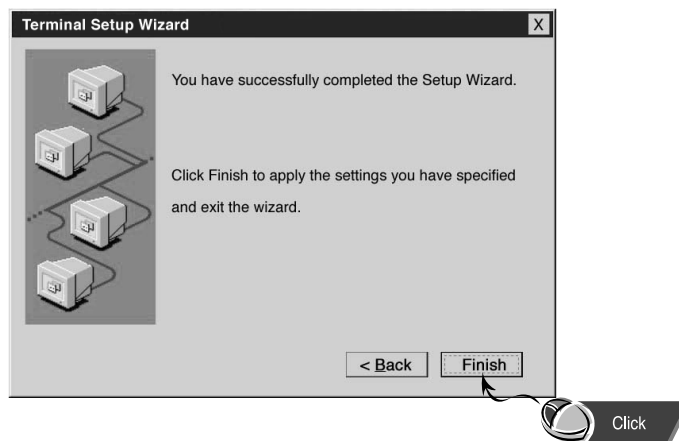
In this section, settings for network using proxy server are set.



Ask the Network manager.

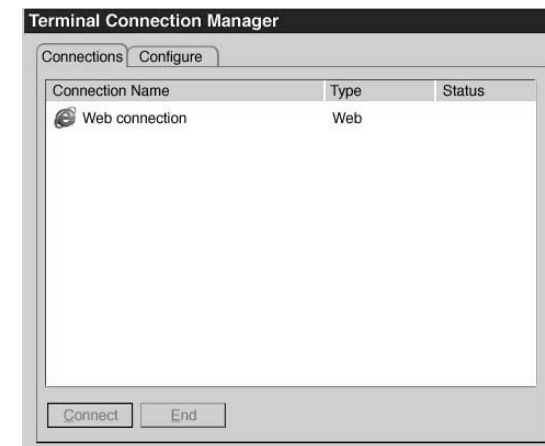
Finishing Terminal installation Wizard

By clicking the “Finish” button, Terminal Installation Wizard ends. To apply the setting chosen, the terminal must be re-started.



Starting connection manager

When the terminal is on, in most cases, connection manager screen such as the following appears. Connection manager largely performs two functions: (1) choosing server/service to be used by “Connections” tab and (2) choosing various items regarding connection by “Configure” tab.



There are three types of connections.

- WEB : Internet connection through the built-in web-browser.
- RDP (Microsoft Remote Desktop Client Protocol) :
Connection to terminal server/service through Microsoft’s RDP client.
- ICA (Citrix Independent Computing Architecture Protocol) :
Connection to Metaframe through Citrix’s ICA client.

For details on connection, please ask server/service manager or client developer company.