

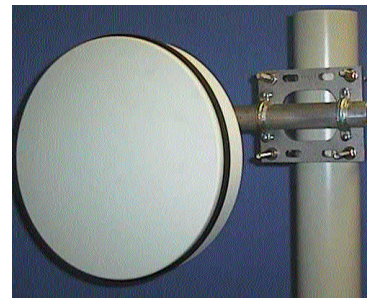
1-ft., Spread Spectrum / ISM Band Standard Parabolic Antenna, 5.725 - 5.850 GHz

Key Features

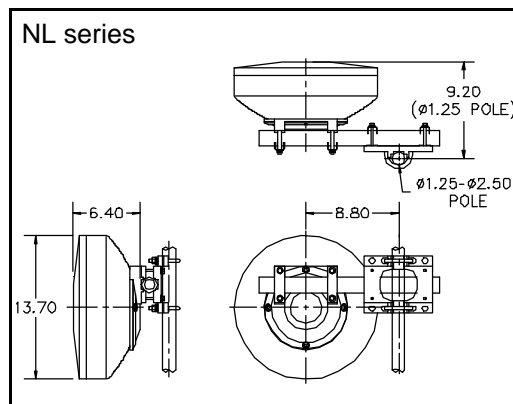
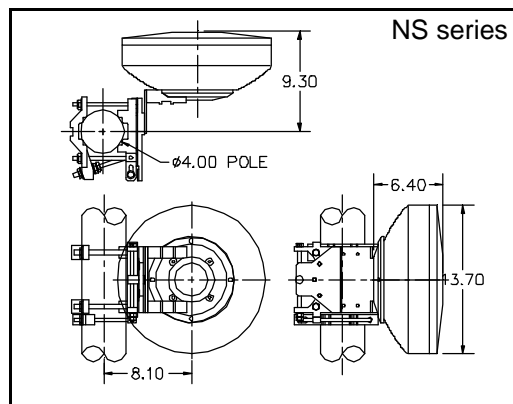
- Lightweight and rugged design.
- Low windloads.
- Easily installed.
- Standard antenna mount (NS) provides fine adjustment for both azimuth and elevation. Accommodates a 1.0 in. to 4.5 in. diameter pipe.
- *NL Series* removes the fine adjustment feature for both azimuth and elevation. Accommodates a 1.0 in. to 2.25 in. pipe.
- Optional mounting kit available for *NL Series* to mount to a 2.5 in. to 4.5 in. diameter pipe.
- Standard color white. Other colors available on request.
- Radome standard.



NS Series



NL Series



Antenna Specifications, (typical)

Model #	SP1-5.8
Frequency, GHz	5.725 - 5.850
Polarization	Single
Gain, (nominal)	
@ 5.725 GHz	22.0 dBi
@ 5.850 GHz	22.5 dBi
Beamwidth -3dB	14 degrees
Front-to-back ratio	28 dB
X-Pol	25 dB
VSWR, Max	1.5:1
RF Interface	Type "N" (F)

Note: Product specifications may change without notice.