

# 1 Stationary RFID Portal Reader User's Manual

## 1.1 Cover sheet



<b>1</b>	<b>STATIONARY RFID PORTAL READER USER’S MANUAL.....</b>	<b>1</b>
<b>1.1</b>	<b>Cover sheet.....</b>	<b>1</b>
<b>1.2</b>	<b>Introduction .....</b>	<b>3</b>
1.2.1	Contents of this Document .....	3
1.2.2	Audience.....	3
1.2.3	RFID System Quickstart.....	3
1.2.4	Product Description.....	4
1.2.5	Unpacking and Inspection .....	4
1.2.6	Product Installation.....	4
<b>1.3</b>	<b>Installation and Operation of demonstration Graphical User Interface .....</b>	<b>5</b>
1.3.1	Minimum System Requirements .....	5
1.3.2	Installation .....	5
1.3.3	Using the Demonstration software .....	8
1.3.4	COM Port Enumeration.....	15
1.3.5	Changing Software Parameters and Reader Configuration .....	18
<b>1.4</b>	<b>RFID overview .....</b>	<b>20</b>
1.4.1	RFID operating principles .....	20
1.4.2	RFID vs. bar code.....	22
1.4.3	RFID system components.....	23
1.4.4	RFID standards.....	29
<b>1.5</b>	<b>Stationary portal RFID Reader Theory of Operation.....</b>	<b>39</b>
<b>1.6</b>	<b>Host-Reader Interface.....</b>	<b>41</b>
<b>1.7</b>	<b>Troubleshooting / technical support .....</b>	<b>41</b>
<b>1.8</b>	<b>Technical specifications.....</b>	<b>41</b>
<b>1.9</b>	<b>Notices.....</b>	<b>42</b>
1.9.1	RFID limitations .....	42
1.9.2	Safety.....	42
1.9.3	Limitation of liability.....	42
1.9.4	Patents.....	42
1.9.5	Copyright notice .....	42
1.9.6	Comments and feedback.....	43
<b>1.10</b>	<b>Regulatory Compliance.....</b>	<b>43</b>
1.10.1	FCC Statement.....	43

## 1.2 Introduction

### 1.2.1 Contents of this Document

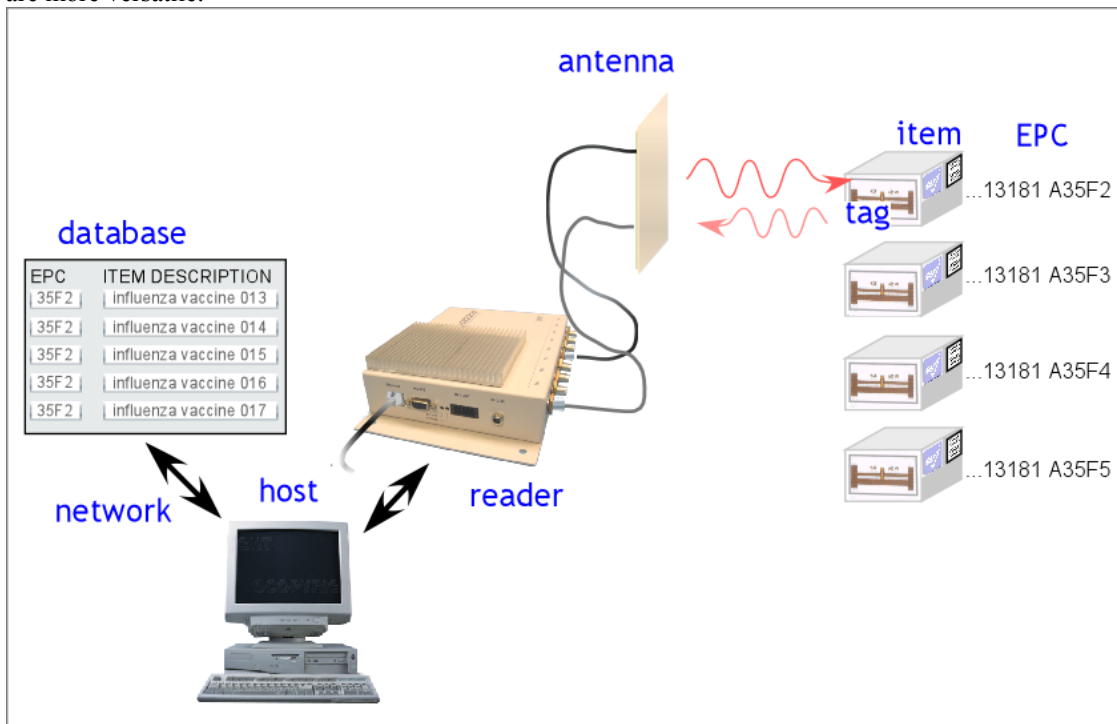
This manual describes installation and operation of the WJ Communications UHF Stationary RFID Portal Readers. A description of the installation and use of the demonstration Graphical User Interface is also provided. The Application Programmer's Interface to the Apollo-series devices using a serial communications port is summarized; use of the Ethernet port to control the reader is described in a separate document.

### 1.2.2 Audience

This manual assumes that the reader is generally familiar with Windows personal computers. An introduction to RFID technology is provided for readers who are new to the field.

### 1.2.3 RFID System Quickstart

Radio Frequency Identification (RFID) uses electromagnetic waves to exchange information between a **tag**, containing (at least) a number uniquely identifying that physical tag and by implication the object to which it is attached, and a **reader**. RFID tags are analogous to bar codes, but can contain more information and are more versatile.



The WJ Communications Stationary Portal Readers are **UHF** readers, operating at a frequency of roughly 902-928 MHz. These readers are compatible with **EPCglobal Class 0** and **EPCglobal Class 1** RFID tags, as well as class 0+ tags and ISO 18000-B tags. They are **not** compatible with **HF** (13.56 MHz) tags generally used in Smart Cards, or **LF** (125/134 KHz) tags generally used in animal identification. The stationary portal readers are configured to use either an RS232 serial port or an Ethernet interface to communicate with a host computer; direct optically-isolated I/O ports are also provided. With an appropriate host and appropriate external antennas, a stationary portal reader can be used to acquire the unique identification number (**UID**) of one or more compatible tags in its reading range. When multiple tags are present in the field, collision resolution algorithms are applied to allow effectively simultaneous reading of all the readable tags.

A more detailed discussion of RFID technology can be found in section 1.4.

## 1.2.4 Product Description



The Stationary portal reader is a self-contained RFID reader configured for use at 902-928 MHz. Eight antenna connections using mini-UHF connectors, normally configured as four pairs of (transmit – receive), are provided on the back of the unit. Each pair can be connected to a WJ Communications model AN-120 antenna pair, or to other approved antennas. Communications with a host controller is achieved through a conventional RS232 serial port. Optically-isolated direct I/O, and an Ethernet interface using a conventional RJ45 connector, are also available.

## 1.2.5 Unpacking and Inspection

Box Contents:

- SR2200 Stationary Portal Reader
- A CD containing this User's Manual and Demonstration Software
- AC power adaptor
- RS232 Serial Cable
- USB-to-serial adaptor
- Ethernet cable
- 50 ohm mini-UHF terminators (6)
- I/O port terminator
- Mounting hardware

Contents may vary slightly depending on the model number and options purchased.

## 1.2.6 Product Installation

The Stationary portal reader should be installed in a location protected from physical impact. The reader may support up to 4 transmit-receive antenna pairs. The antennas should not be located more than 5 meters

(15 feet) from the reader. The reader should be securely mounted using the four mounting holes provided, preferably in a vertical orientation allowing air to flow along the length of the cooling fins. At least 12 cm (5 inches) of clearance should be provided in all directions from the reader. The reader and antennas should not be located close to a strong source of RF interference such as a cordless telephone or 900-MHz wireless local area network (WLAN) basestation. The antennas should not have any conductive (metallic) obstructions within 50 cm in the direction in which tag reading is to be performed.

A possible installation sequence is as follows:

1. Mount the reader to a secure, stable surface, with adequate clearance and air flow.
2. Attach the antenna cables to the relevant mini-UHF connectors at the reader, and N-type connectors at the antenna. Terminate unused mini-UHF connectors with 50 ohm loads.
3. Connect the RS232 serial control cable to the reader and the host computer.
4. Connect the 24 VDC power supply cable to the reader.
5. If the I/O port is not used, it must be terminated using the I/O terminator provided.
6. Place one or more appropriate RFID tags in front of one of the antenna pairs, within 1-2 meters.

It is important to note that transmit and receive antennas must be connected in pairs to corresponding connectors. Thus, if only one antenna pair is employed, the transmit antenna may be connected to any of the transmit connectors (e.g. TX1), but the receiving antenna must then be connected to the corresponding receive connection (RX1 in this case). Antenna ports not used should be terminated with the 50 ohm terminations provided. If separate transmit and receive antennas are employed, it is important that they be oriented so as to view the same illuminated area, and preferably be coplanar so as to minimize coupling between the antennas.

At this point the reader should be ready for operation using the demonstration graphical interface software, or other custom control software.

## ***1.3 Installation and Operation of demonstration Graphical User Interface***

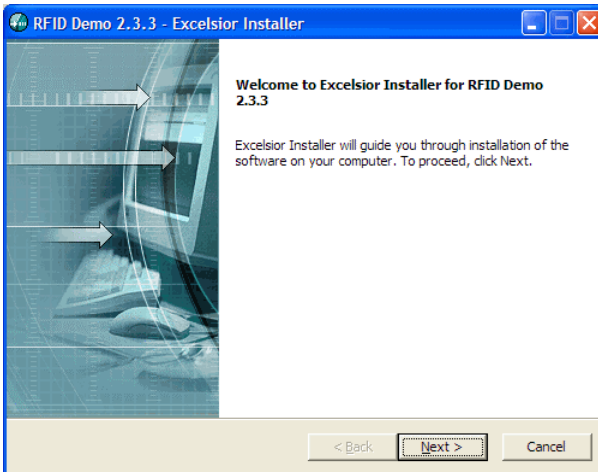
The following description assumes the host computer is operating under Microsoft Windows XP; slightly different screens will be visible if another operating system is employed.

### **1.3.1 Minimum System Requirements**

This software requires a host computer running Microsoft Windows 98, NT, 2000 or XP, with a Pentium-compatible PC and at least 128MB RAM, 50 MB available hard disk space, and 800x600 resolution or higher. The configuration described presumes that an RS232-capable serial port or emulated serial port is available. If the host computer is not equipped with a serial port connection, a USB-to-serial converter can be employed. The converter may require additional driver software, not provided here.

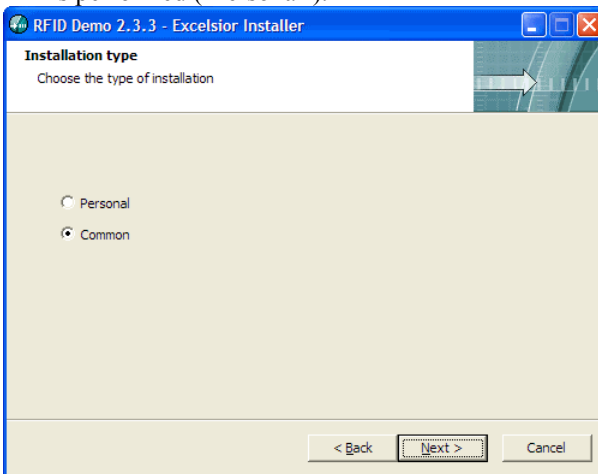
### **1.3.2 Installation**

1. Double-click on the file 'rfiddemo\_2.3.3\_setup.exe' or run the file from the START menu 'run' selection.
2. The installer should display the startup-screen:

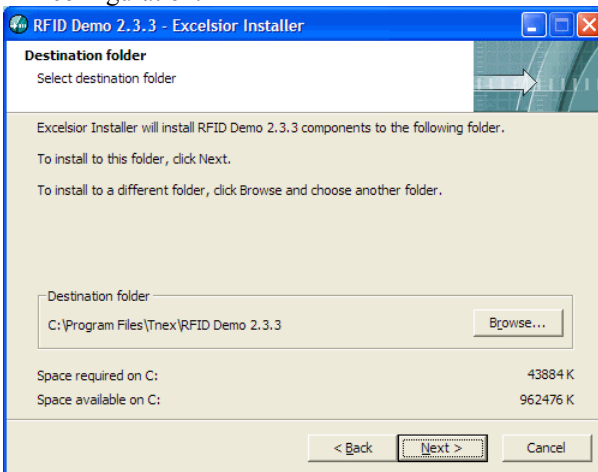


Click "NEXT".

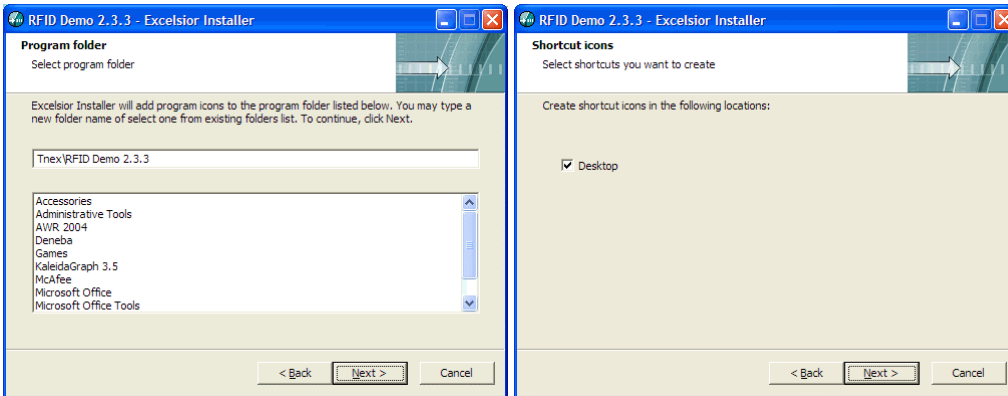
3. The installation-type screen gives you the option of installing the software so that it is available to all users of the host computer ('Common'), or only to the login name under which the installation is performed ('Personal').



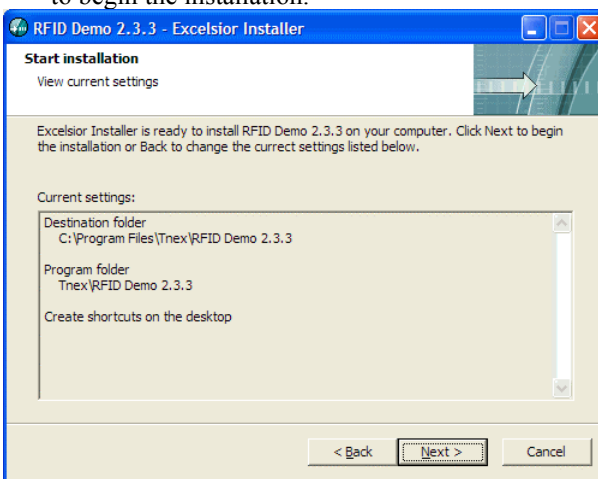
4. The installer asks where you would like to install the program. The default location is on the local C disk in the Program folder. If you change the location of the program it is important to note where it is installed, as you will need to access this folder to make modifications to the reader configuration.



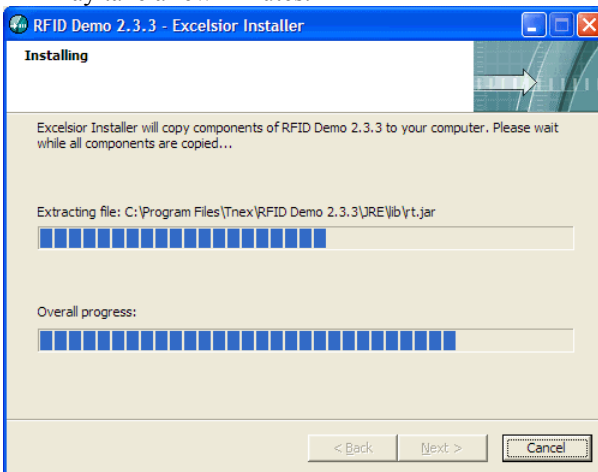
5. You are provided with the option of installing a demo icon in the Program folder, and a shortcut on the desktop.



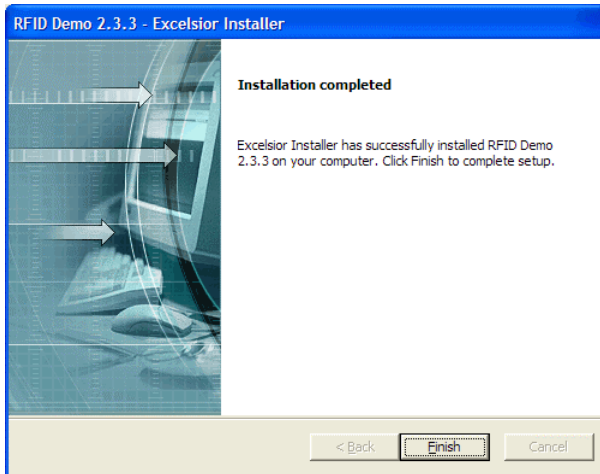
- The installer then provides a summary of the selected parameters for you to review prior to actual installation of the software. Click 'Back' if you decide to change any of the settings. Click 'Next' to begin the installation.



- The installer copies the requisite files; progress is displayed in the installer window. This process may take a few minutes.



- When the installer is finished the Installation Complete screen appears. Click 'Finish' to exit the installer.



### 1.3.3 Using the Demonstration software

#### Introduction

The RFID Demo is an application for demonstrating the capabilities of the RFID hardware and Java API. The demo consists of three individual demonstration modules: a **Location Demo**, an **Inventory Demo**, and a **Retail Demo**. Each demo demonstrates different aspects and areas where the RFID hardware and API can be applied. More details concerning each demo are described in later sections.

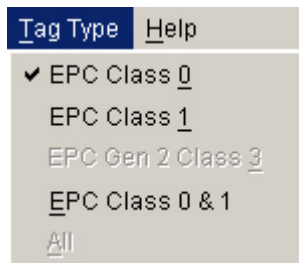
#### Running the Demos

Before starting the software, ensure that the reader is powered up and connected to one or more pairs of antennas. Any antenna ports that are not used should be terminated by a 50-ohm load. The reader serial port should be connected to the physical or emulated serial port on the host computer.

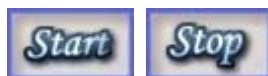
Start the demo software from the START menu or the desktop shortcut. Select the demo to run from the tabs.



Select the tag type to read from the menu bar.



Press the 'Start' button to start the demo and begin reading tags. Press 'Stop' to stop tag reading.



Press the 'Clear' button to clear the data for the current demo. Press the 'Exit' button to exit the application.



## Location Demo

The Location Demo is for demonstrating basic RFID functionality. It consists of four panels, which each represent a location (typically configured as a pair of antennas; thus there are four possible locations corresponding to the four antenna pairs supported by the unit). For this demo, one location directly correlates to one antenna pair.



The top bar contains the location name (Location 1-4). It will show 'No Location' if that location is not set for the selected reader. The bottom bar contains the count of tags being read.

The middle section displays the tags read either in graphic or text format, which can be selected from the display options in the lower left corner of the application. The options are disabled if the demo is currently running.



When the 'Graphics' option is selected, the panel will display one box for each tag read at that location. A sample is shown below with three tags read.



When the 'Tag ID' option is selected, the panel will display a list of all tag IDs that are being read. A sample is shown below.



When the middle section is dark gray as shown below, there is no communication between the application and antenna. Either an antenna fault or response error has occurred.

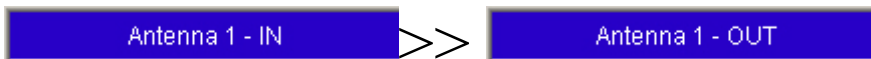


### Inventory Demo

The Inventory Demo simulates an inventory supply of incoming and outgoing goods. It demonstrates the pairing of antennas as two locations: IN & OUT. Tags read at an IN location are added to the inventory. Tags read at an OUT location are removed from the inventory. The demo consists of three areas.

The top bar displays the four antennas and their respective location IN or OUT. The antenna background will be blue if the antenna is responding. It will be black if the antenna is not responding. 'No Location' will be displayed if that antenna is not set for the selected reader.

Next to the antenna name is the location type. When an antenna section is pressed, it will switch that antenna from IN to OUT and vice versa as shown below.



When a tag is read at an IN location, an item is added to the inventory table for that tag as shown below.

Date/Time	Tag ID	Description	Price
08/16/2004 17:38:13	180	Sony VAIO Notebook	1,799.95
08/16/2004 17:38:13	178	TiVo Recorder	299.98
08/16/2004 17:38:06	176	Roomba Vacuum	179.99
08/16/2004 17:38:39	175	Coby Headphones	14.99
08/16/2004 17:38:39	179	Viewsonic 17" Monitor	199.97
08/16/2004 17:38:36	172	1GB SDRAM	39.00
08/16/2004 17:38:36	183	Linksys Router	59.99
08/16/2004 17:38:39	177	Fuji Digital Camera	229.00
08/16/2004 17:38:39	181	Samsung 42" Plasma TV	2,699.96

Added: 15
Removed: 6
Remains: 9

When a tag is read at an OUT location, the item corresponding to that tag is removed from the inventory table as shown below.

Date/Time	Tag ID	Description	Price
08/16/2004 17:38:39	175	Coby Headphones	14.99
08/16/2004 17:38:36	172	128MB SDRAM	39.00
08/16/2004 17:38:36	183	Linksys Router	59.99
08/16/2004 17:38:39	177	Fuji Digital Camera	229.00
08/16/2004 17:38:39	181	Samsung 42" Plasma TV	2,699.96

Added: 15
Removed: 10
Remains: 5

The bottom bar displays the inventory counters. It displays the overall count of items that have been added to and removed from the inventory. It also displays the current count of items that still remain in inventory.

The time buffer filters consecutive tag events between IN and OUT locations. This is to demonstrate the filtering of invalid reads between close proximity antennas.



When the time buffer is enabled, a tag read at an IN location will be ignored at an OUT location until a span of 3 seconds has elapsed without being read again at the IN location. The time buffer is reset to 3 seconds every time the tag is read again at an IN location within the time window. Once the time buffer for a tag has expired, the tag will not be ignored if read again at an OUT location. The same concept applies to tags read first at an OUT location.

### Retail Demo

The Retail Demo is very similar to the [Inventory Demo](#). It also simulates an inventory supply of incoming and outgoing goods. The difference is that outgoing goods leave via the sales transaction checkout station.

The left section containing the table works almost exactly like the [Inventory Demo](#). Tags read at an IN location are immediately added to the inventory. The difference is with tags read at an OUT location, which is described below.

The right section or sales transaction section represents a retail checkout station. Tags read at an OUT location are ignored until the 'Scan' button is pressed (shown below).

**Sales Transaction**

Subtotal	0.00
Tax 10%	
Total	

When the 'Scan' button is pressed, the sales transaction buttons will become 'Undo' and 'Checkout' as shown below. Now when a tag is read at an 'Out' location, the item corresponding to that tag is removed from the inventory and added to the sales transaction list also shown below.

**Sales Transaction**

Roomba Vacuum	179.99
Sony VAIO Notebook	1,799.95
TiVo Recorder	299.98

Subtotal	2,279.92
Tax 10%	
Total	

The 'Undo' button will return all items in the sales transaction list back to the inventory table. Items can also be returned from the transaction list back to the inventory by reading the corresponding tag at an IN location.

The 'Checkout' button will complete the sales transaction. It will turn the sales transaction off and calculate the tax and total of the transaction as shown below.

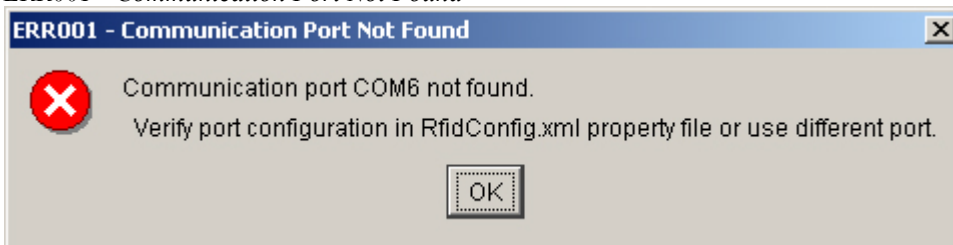
Sales Transaction	
Roomba Vacuum	179.99
Sony VAIO Notebook	1,799.95
TiVo Recorder	299.98
Subtotal	2,279.92
Tax 10%	227.99
Total	2,507.91
<input type="button" value="Scan"/>	

There is no time buffer for the Retail Demo.

### Troubleshooting

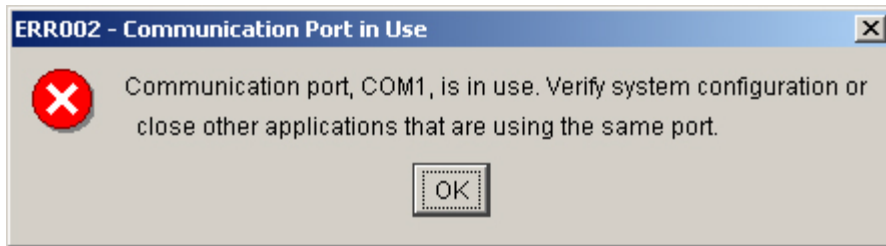
Below are listed some common error conditions and means to correct them.

#### *ERR001 - Communication Port Not Found*



The serial port isn't working, or has enumerated to a COM port different from what the software expects. See sections 1.3.4 and 1.3.5 below for instructions on how to diagnose and correct these problems.

#### *ERR002 - Communication Port in Use*



The communication port is being use by another application.  
- Close the application that is using the port.

#### *ERR010 - Communication Response Error*

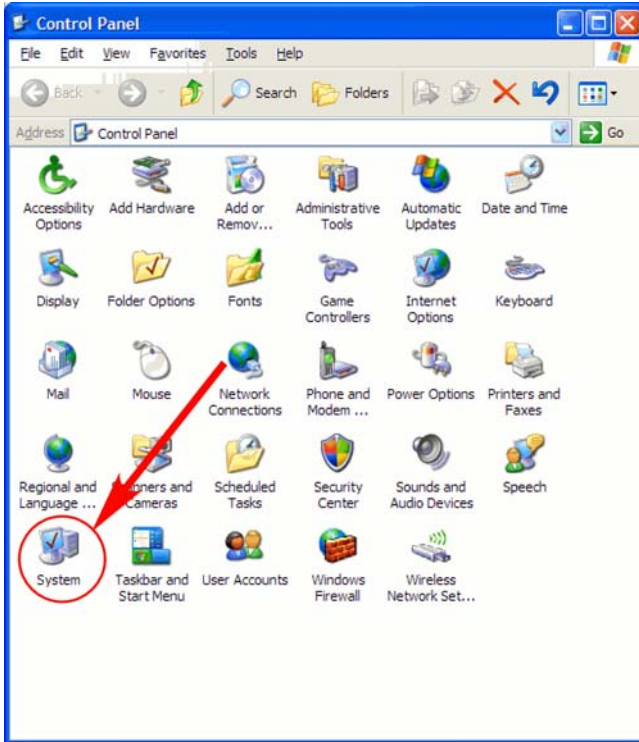


There is no communication between the application and the reader.  
- Restart the application.  
- Check that the all connections are correct.  
- Check that reader has power.  
- Reset the reader by powering it off, waiting, and then powering it back on.

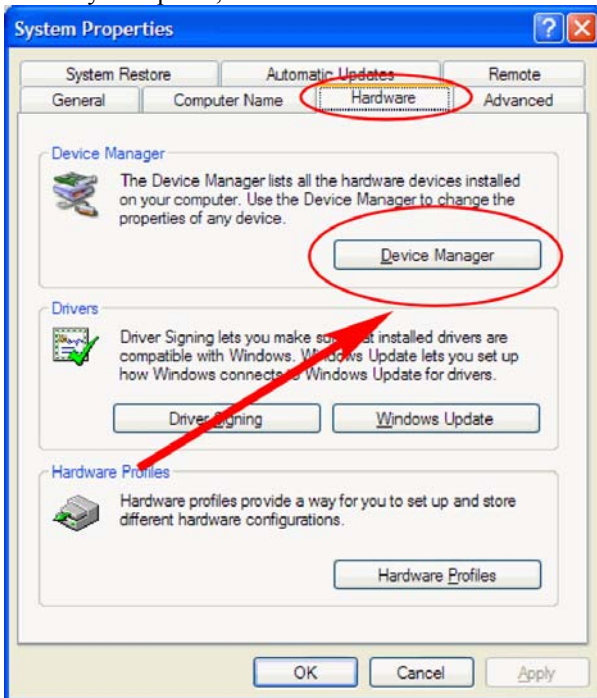
### **1.3.4 COM Port Enumeration**

The default method for communication with the Stationary portal reader employs a serial port or emulated serial port. In a Windows environment, serial ports are denoted by the word COM and a one-or-two-digit number; thus the first port is COM1, the second COM2, and so on. The demo software assumes that the reader is present on the COM1 port. If the host computer is equipped with a single physical serial port (typically a D-sub-9 connector on the back of the unit, often labeled 'COM' or 'COM1'), this port will typically be COM1 and can be used to connect the host to the Stationary portal reader using a conventional serial cable.

If a physical serial port is not available but a USB (universal serial bus) connection is, it is possible to employ any one of a number of commercially-available converters that provide translation between the USB and RS232 protocols. It may be necessary to install driver software in the host computer for the converter employed. Once the converter is installed and running, it will appear to the host computer as a serial port, but not necessarily as COM1. To find out which port the emulator has enumerated to, go to the START menu and select Control Panel. In the Control Panel, select System.

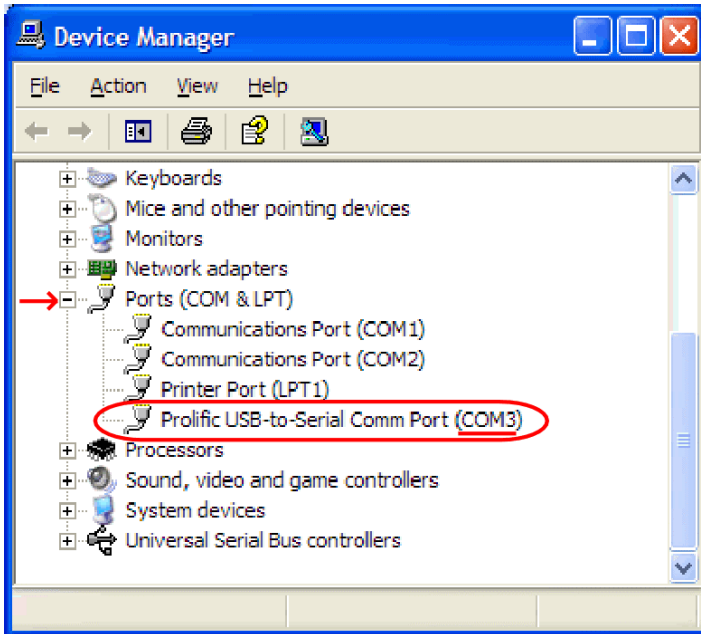


In the System panel, click on the Hardware tab and select the Device Manager:



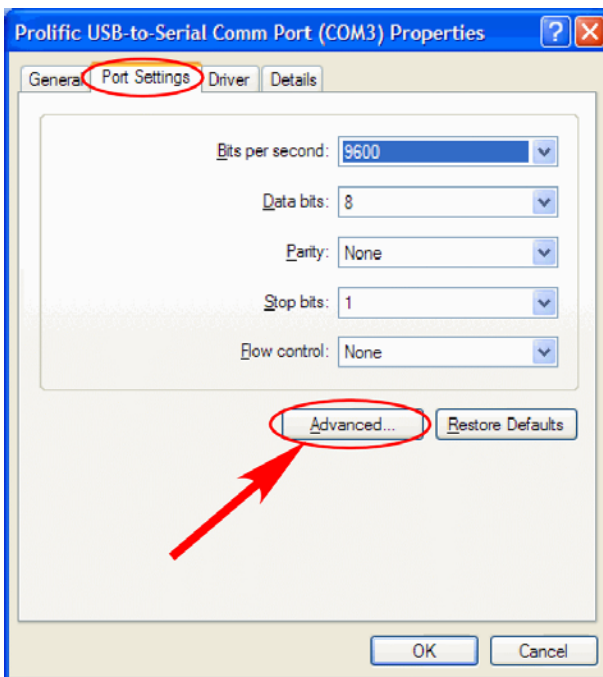
In the Device Manager, scroll down if necessary to find the list of 'Ports (COM and LPT)'. You may need to click on the [-] heading to see the list. The USB-to-serial device should be displayed, showing which COM port it has been assigned to. In this case, a 'Prolific USB-to-Serial' converter has been assigned to COM3. Your display may differ slightly depending on the brand of converter used.





If the port you wish to use to communicate with the reader is not assigned to COM1 you need to take one of two approaches: you can reassign the port to COM1, or you can reconfigure the software to use the port to which your reader cable has been assigned (COM3 here). Reassignment, described below, may not be possible depending on the configuration of the host computer. Software configuration is described in section 1.3.5.

To change the port assignment, double-click on the port ('Prolific USB-to-Serial' in the example shown) to bring up the configuration screen for this port. Select the 'Port Settings' tab and click on 'Advanced'.



In the resulting control window, select the pull-down menu for the COM port. If the COM port you want (for example, COM1) is not in use you can reassign that number to the current port. However, if it is in use you may need to reconfigure the demo software (section 1.3.5).

### 1.3.5 Changing Software Parameters and Reader Configuration

Changes to the COM port assignment, RF power level, delay between inventory operations, or other parameters, you need to edit the text file RfidConfig.xml, located in the director \properties\ in the folder in which the software was installed. If you did not change the default configuration, this folder will be found in C:\Program Files\Tnex\RFID Demo 2.3.3. If you installed the software in a different location, you must navigate to this location using Windows Explorer or the DOS window. The text file can be edited in any environment that can edit and save pure text files. Typical word processors like Microsoft Word will not save text files unless specifically instructed to do so. If you save to a pure text file from Word or another standard word processor, ensure that the file name has not been changed, and in particular that the extension remains '.xml' and not, for example, '.txt'. It may be necessary to reconfigure Windows Explorer to display filename extensions. The file consists of a series of XML statements; an excerpt is shown below:

```
<?xml version="1.0"?>
<RIC>
  <location class="com.tnex.services.common.location.LocationService">
    <locationProp name="LocationName" type="String">a0</locationProp>
    <locationProp name="ttl" type="Integer">2</locationProp>
  </location>
  <location class="com.tnex.services.common.location.LocationService">
    <locationProp name="LocationName" type="String">b0</locationProp>
    <locationProp name="ttl" type="Integer">2</locationProp>
  </location>
  ...

```

#### COM Port Reassignment:

In the segment:

```
<protocol
class="com.tnex.services.common.protocols.sr2000.ProtocolService">
  <protocolProp name="PortNumber" type="String">COM1</protocolProp>
  <protocolProp name="TimeOut" type="Integer">3000</protocolProp>
  <protocolProp name="BaudRate" type="Integer">57600</protocolProp>
  <protocolProp name="DataBits" type="Integer">8</protocolProp>
  <protocolProp name="StopBits" type="Integer">1</protocolProp>
  <protocolProp name="Parity" type="String">NONE</protocolProp>
  <protocolProp name="Delay" type="Integer">200</protocolProp>
</reader
class="com.tnex.services.common.datasources.rfreaders.sr2000.Sr2000ReaderService">

```

change '>COM1<' to whatever port your serial connection to the reader has been assigned to. In the example of the previous section (1.3.4) the text would become:

```
<protocolProp name="PortNumber" type="String">COM3</protocolProp>
```

Save the file (make sure it has the same filename!) and restart the demonstration software.

#### RF Power:

Copyright© 2005 by WJ Communications Inc. Subject to change without notice. This information is provided "as is," and WJ makes no claims of fit for purposes intended, merchantability or other. All trademarks, service marks, trade names and logos are used in good faith and remain the property of their rightful owners.

In the segment

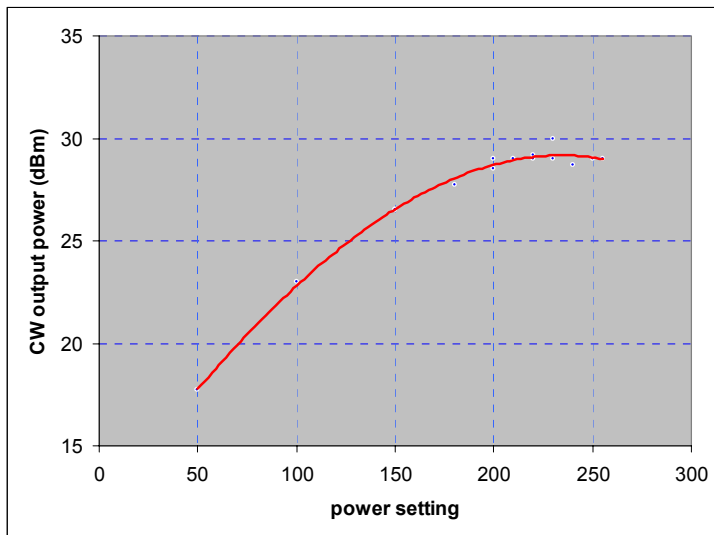
```
<antennaProp name="id" type="String">00</antennaProp>  
<antennaProp name="power" type="Integer">255</antennaProp>  
<antennaProp name="singulation" type="Byte">02</antennaProp>
```

change the value of “power” as appropriate. The power is entered as a decimal integer; the minimum value is 0 (not very useful!), and the maximum value is 255. For example, to reset the power to a value of 200, you can change the text to:

```
<antennaProp name="power" type="Integer">200</antennaProp>
```

Then save the file and restart the demonstration software.

An example relationship between the continuous-wave (CW) output power and the power setting for an Stationary portal reader is shown below to provide rough guidance in the use of the power setting parameter. Note that your reader may not produce exactly the same results as shown.



#### Delay between inventory commands:

To reset the inventory delay, edit the value of ‘Delay’ in the segment (the delay is given in milliseconds):

```
<protocol  
class="com.tnex.services.common.protocols.sr2000.ProtocolService">  
  <protocolProp name="PortNumber" type="String">COM3</protocolProp>  
  <protocolProp name="TimeOut" type="Integer">3000</protocolProp>  
  <protocolProp name="BaudRate" type="Integer">57600</protocolProp>  
  <protocolProp name="DataBits" type="Integer">8</protocolProp>  
  <protocolProp name="StopBits" type="Integer">1</protocolProp>  
  <protocolProp name="Parity" type="String">NONE</protocolProp>  
  <protocolProp name="Delay" type="Integer">200</protocolProp>
```

For example, the following text would change the delay from 200 to 100 milliseconds:

```
<protocolProp name="Delay" type="Integer">100</protocolProp>
```

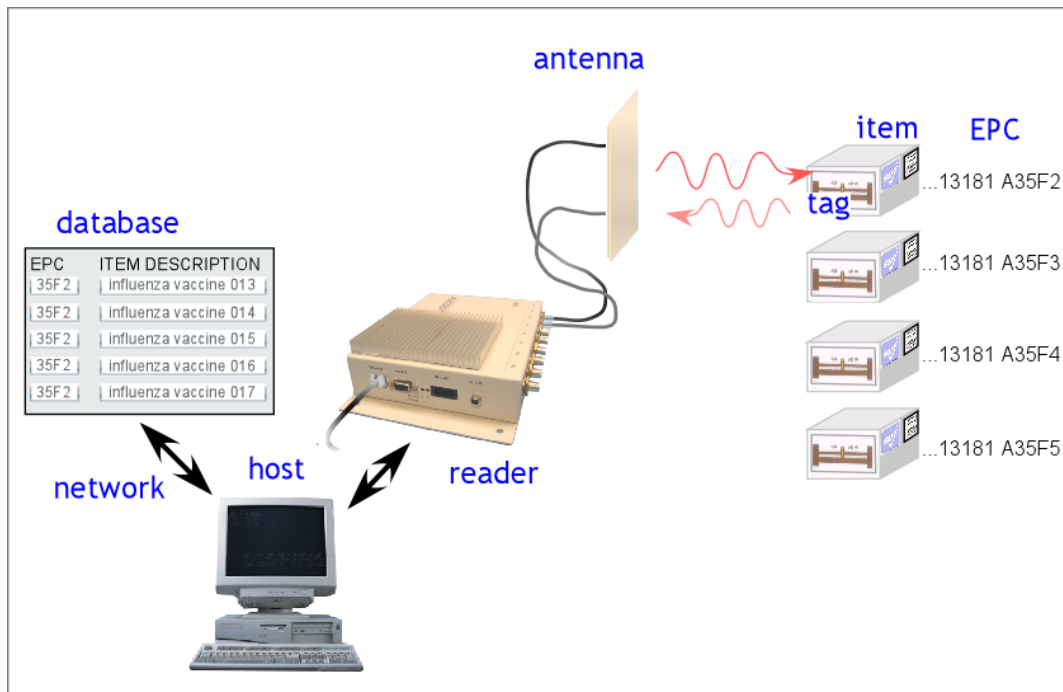
Note that the settings for the serial port can also be reset in this file. The default values are:

- Port Number: COM1
- Baud Rate : 57600
- Data Bits : 8
- Stop Bits : 1
- Parity : NONE

## 1.4 RFID overview

### 1.4.1 RFID operating principles

**Radio-frequency identification** (RFID) is an auto-identification technology, similar in concept to other common auto-identification technologies such as bar code scanners, magnetic strip readers, or magnetic ink readers. Like other auto-ID techniques, RFID associates an identifying number with a physical object. In RFID, the unique identifying number (**UID** or, as will be explained below, **EPC**) is incorporated in a special system, an **RFID transponder** (often simply known as a **tag**). An **RFID Interrogator** (usually known as a **reader**) is used to obtain the UID from the tag using electromagnetic waves. The tag is usually attached to a physical object that is to be identified, such as a carton, a pallet, or a container filled with a product.

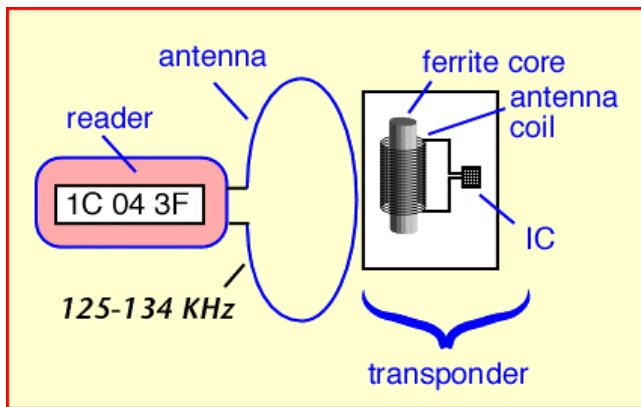


In order to reduce the cost of the tag, most tags do not incorporate a battery or other source of power, but instead operate using DC power derived from the radio frequency signal they receive from the reader. In addition, low-cost tags do not incorporate a radio transmitter, but instead use varying reflection of the received signal from the reader to communicate back to it. Such tags are known as **passive** tags. Since passive tags are the most common type, the description below will assume their use. Variants are also available: **semi-active** tags incorporate a battery to power the integrated circuit, but still use reflected

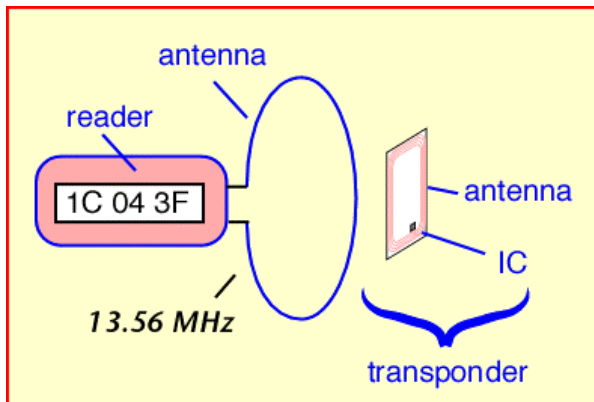
waves (**backscattering**) to communicate with the reader. **Active** tags incorporate both a battery and a radio transmitter, and are much more costly than passive tags, but also more versatile.

RFID systems can operate at different radio frequencies. The frequency chosen has important effects on the way tags and readers interact and on what applications are appropriate.

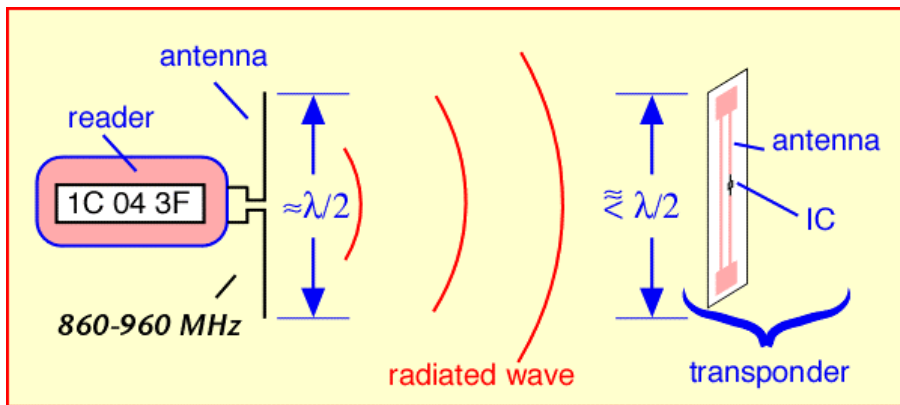
**Low-frequency (LF)** tags and readers typically operate at 125 or 134 KHz. This is a very low frequency, with a wavelength of about 2.4 kilometers (1.5 miles). Low-frequency radiation is very effective at penetrating water and living tissues, so that LF tags can be used to identify livestock. However, because the tags and readers are very much smaller than a wavelength, they cannot radiate effectively, so LF readers and tags depend on **inductive coupling** to operate. In effect, the reader and tag form the primary and secondary windings of a transformer. The tag must be in close proximity to the reader antenna to be read; read ranges are comparable to the size of the reader antenna, typically a few 10's of cm (5-10 inches) for a small reader antenna. Because the induced voltage per coil winding is also very small at these frequencies, the tags are composed of many turns of wire, often wound around a ferrite core to increase coupling. Since there is no radiated power, there is usually very little issue with regulatory compliance in using LF tags and readers.



**High-frequency (HF)** tags and readers operate at 13.56 MHz. This frequency is available for industrial use in most jurisdictions worldwide. The wavelength is about 20 meters (60 feet), still larger than most reader or tag antennas, so inductive coupling is used as in LF tags and readers. However, the higher frequency provides a larger induced voltage, so the reader usually uses a single-turn coil, and transponders typically incorporate 3-5 turns of wire. HF transponders can be readily constructed on a flat plastic substrate the size of a credit card, forming **Smart Cards** widely used as identification badges and credit cards with enhanced functionality. Typical read range varies from a few cm to a meter or so (a few inches to 3 feet), again dependent on reader antenna size.



When long read range is required, **ultra-high-frequency (UHF)** tags and readers are appropriate. The Apollo-series are UHF RFID readers. UHF systems typically operate at frequencies between 860 and 960 MHz, depending on the regulatory jurisdiction. In the United States, unlicensed operation is allowed in the Industrial, Scientific, and Medical (ISM) band at 902-928 MHz. The wavelength at these frequencies is about 33 cm (13 inches), so the reader and tags are roughly comparable in size to the wavelength. The reader antenna creates a radiated electromagnetic wave, which can propagate long distances. UHF tags and readers can thus exploit **radiative coupling** to achieve read ranges not available for LF or HF devices. Read range for passive UHF tags can be as much as 10 meters (30 feet) with an appropriate directional antenna; longer ranges are achievable using semi-passive tags.



RFID readers and tags operating in the microwave ISM band at 2.4-2.45 GHz are also widely used. The 2.4-2.45 GHz band is available for unlicensed operation in most jurisdictions worldwide. At this frequency the wavelength is about 12 cm (5 inches). Very small tags can be used in the 2.45 GHz band, but because of the consequent small antennas, the amount of power collected by a tag is reduced in comparison to UHF tags. Passive 2.4 GHz tags have typical read ranges of around 1 to 3 meters (3 to 10 feet).

## 1.4.2 RFID vs. bar code

RFID tags and readers perform functions similar to those of bar codes and bar code scanners. How do they differ? When should one use bar codes and when should RFID tags be employed? There are four key distinctions to keep in mind:

- COST:** bar codes can be printed on the surface of many existing packages at very low cost. Separate bar-coded tags with adhesive backing are also inexpensive. Bar code scanners of various types are widely available at modest cost, as is software to integrate bar code scanning into standard business processes and enterprise planning. RFID (particularly at UHF and microwave frequencies) is a relatively less widespread technology, and RFID tags are manufactured objects containing an integrated circuit and antenna structure. RFID tags today cost significantly more than bar codes, the exact value depending on type and quantity, though the cost of RFID tags is falling rapidly as economies of scale are applied. Low-cost readers such as the MPR5000 are just becoming available, but most readers are still expensive proprietary devices. When cost is the only or a dominant issue, bar codes should be used.
- INFORMATION:** Bar codes usually contain very limited information. Bar codes printed on mass-produced packaging inevitably identify only the type of product and not the unique individual package in hand. Bar codes containing unique identifying information such as serial numbers can be used, but must be individually printed, raising cost, and separate codes are usually needed to identify model number and the particular instance of the model. RFID tags generally allow a 64-bit or 96-bit UID, the latter being more than adequate to identify manufacturer, model or part number, and the specific physical instance of the model to which the tag is attached. More advanced tags can contain additional user memory, which can be written to in the field, allowing

for versatile storage of information conveniently attached to an object when necessary. When information storage capacity is a concern, RFID tags may be superior to bar codes.

- **AUTOMATION:** Bar codes require an optical line of sight between the reading device and the code, and may also require that the code or reader be properly oriented. In many cases this means that individual objects or tags must be handled by a human being in order to be reliably read. UHF RFID tags can be read from a relatively long distance, and the path between the reader and the tag can be visually obstructed (though certain obstructions will also affect radio frequency devices, as will be discussed in more detail below). Bar codes are normally read one at a time, particularly on randomly-oriented or stacked objects, whereas tens to hundreds of RFID tags can be simultaneously present in the field of the reader and read ‘simultaneously’ from the viewpoint of the user. RFID techniques permit automated information handling to a much greater extent than bar codes.
- **ROBUSTNESS:** Bar codes cannot be read if the printed code becomes dirty, defaced, or excessively bent or curled. RFID tags are robust to dirt, paint, ink, and to some extent mechanical damage, and can be read (albeit with reduced range) when misoriented or mechanically distorted. RFID tags are tougher than bar codes.

### 1.4.3 RFID system components

An RFID system is composed of (at least) a *reader*, one or more *antennas*, and one or more compatible tags. In many applications it may be necessary or helpful to create human-readable labels incorporating RFID tags; in this case an RFID *tag printer* is also very useful. While standalone RFID systems are appropriate in some circumstances, more commonly the RFID reader is just a sensor that needs to interact with a larger information system in order to be useful. *Middleware* is used to enable the interaction between the reader and the network, and to filter and aggregate the large amounts of data the reader collects into a more useful compendium provided to the network.

#### 1.4.3.1 Reader

A UHF RFID reader is a radio transmitter and receiver. Most readers are capable of interrogating passive tags, and are equipped with certain features uniquely suited to use for communicating with passive RFID tags. A reader reading passive tags simultaneously communicates with the tag population and provides power to operate the integrated circuits contained in the tags. During transmission, the reader transmits an *amplitude-modulated* signal that is received by tags within range. The transmit power is generally limited by regulatory requirements; for example, in the United States, no more than 1 watt average RF power may be transmitted. Modulation rate varies depending on the standard employed, but is typically a few tens of kilobits per second for UHF tags. Special coding of the transmitted data is employed to maximize the power available to the tags.

Once the tags have been powered up and received their instructions from the reader, they take turns responding with their UID. Because of the unique requirements of the backscatter radio system used by passive and semi-passive tags, the reader must continue to transmit a non-modulated (*continuous-wave* or *CW*) signal while it listens for tag responses. The tags employ the CW signal to continue to provide power to the tag electronics, and modulate the impedance of their own antennas in order to vary the signal reflected back to the reader. The reader must extract the very small tag reflections from all the other reflected signals it encounters. The default configuration of the Stationary portal readers uses one antenna to transmit, and a second (typically physically adjacent) antenna to receive the backscattered signal. Up to four such pairs can be connected to the reader. The reader can switch from one antenna pair to the other in order to cover differing physical regions, such as the high and low portions of a doorway, or to avoid missing tags because of local losses of signal strength – *fading* – that are sensitive to the exact position of the antenna and other objects. Any signal from the transmitting antenna that leaks into the receiving antenna will compete with the small reflected signal from the tag; that is, it is desirable to have good

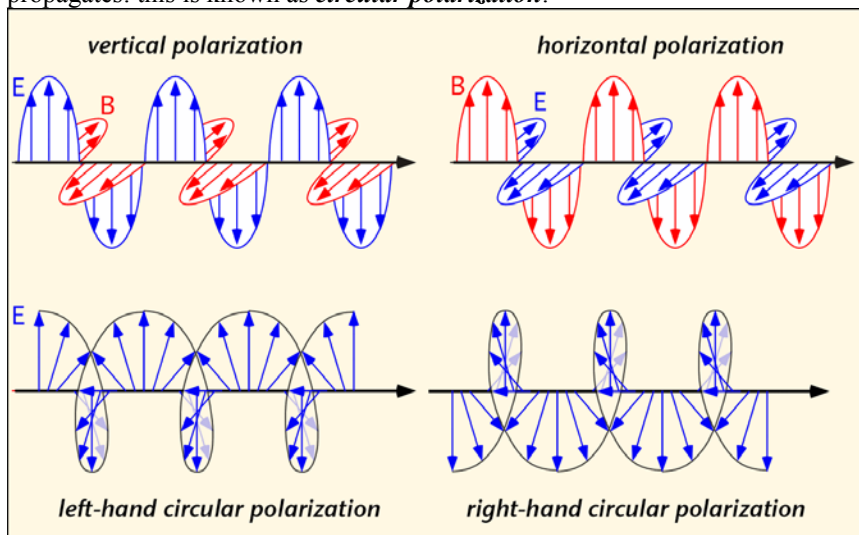
**isolation** between the transmit and receive antennas. Isolation will be degraded if conductive (metallic) objects are placed close to the antennas. For best results, antennas should always be mounted in accordance with manufacturer’s recommendations, and free of obstructions for at least 1 meter in the read direction.

In the United States, readers are required by law to **hop** randomly from one frequency channel to another when operating within the ISM band, residing for no longer than 0.4 seconds at any one frequency. In addition, regulations forbid coordination of hopping patterns between collocated transmitters. When configured for US operation, the Apollo series uses 50 channels separated from one another by 500 KHz, and operates in each channel for 50 to 400 milliseconds. During hops from one channel to another, the RF output is turned off.

### 1.4.3.2 Antennas

Antennas are the intermediaries between the voltages sent and received by the reader, and the electromagnetic waves used to provide power to and communicate with the tags. Three critical characteristics of antennas used in RFID systems are their **maximum directive gain**, **polarization**, and **match**.

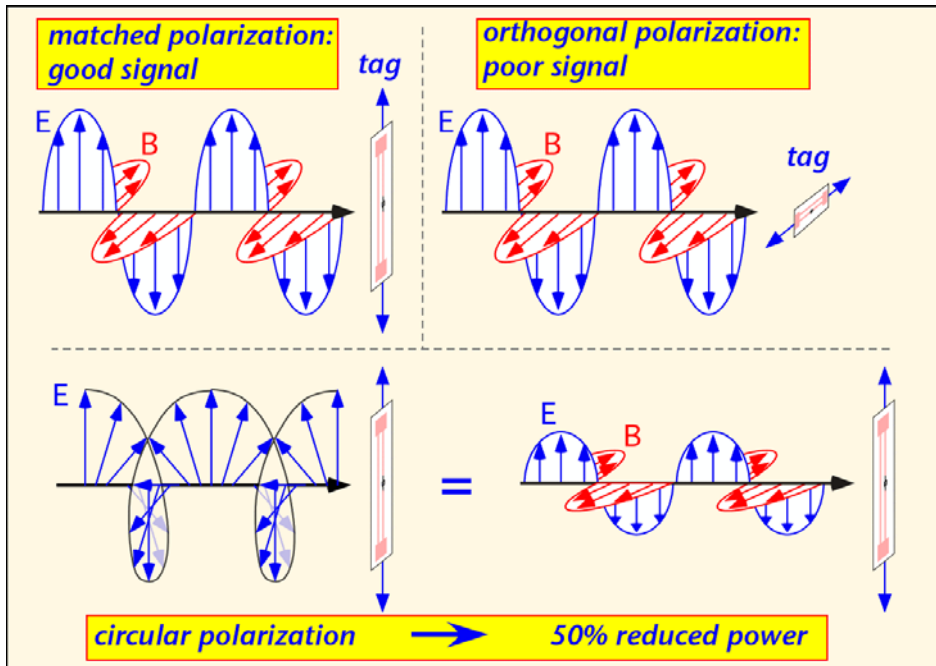
Electromagnetic radiation consists of a traveling electric and magnetic field. The electric field has a direction at any point in space, normally perpendicular to the direction of propagation of the wave; this direction is the **polarization** of the wave. For linearly polarized radiation, the direction of the electric field is constant as the wave propagates in space. Configurations can also be constructed in which the direction of the electric field rotates in the plane perpendicular to the direction of propagation as the wave propagates: this is known as **circular polarization**.



The best power transfer between antennas is obtained when their polarizations match. Thus the best read range is obtained from e.g. a vertically polarized reader antenna transmitting to a vertically polarized tag antenna. This is an excellent scheme to employ when the orientation of the tag during reading can be controlled. However, if the orientation of the tag can vary, the tag could accidentally be perpendicular to the polarization of the reader antenna – a horizontal tag with a vertically polarized signal in shown in the diagram below – in which case very little power is received, and the tag will not be read. When the tag orientation is unknown or uncontrollable, a circularly polarized reader antenna should be used. Vertical tags, horizontal tags, and tags rotated to intermediate angles can then be read with equal facility. However, this versatility is not without cost. A circularly polarized signal can be regarded as the combination of a horizontal and vertical signal, each containing half of the transmitted power. A linearly polarized tag antenna only receives its own polarization, and thus half the transmitted power, being of the wrong polarization, is wasted. The read range of a circularly polarized antenna with a linearly polarized tag is

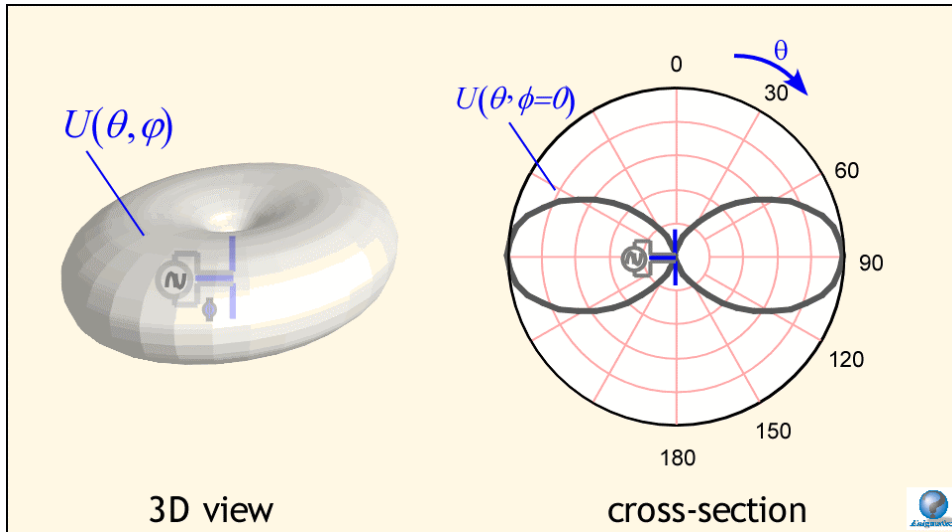


reduced from what could be obtained with a linearly polarized reader antenna, if the tag orientation is known.



In discussing antennas, it is often convenient to speak of an *isotropic* antenna that radiates power equally in all directions, but no such antenna actually exists. Real antennas always transmit more effectively in some directions than others. The ratio of the power density in the direction of highest power to the average power radiated in all directions is the *maximum directive gain*, often simply referred to as the *gain* of the antenna. It is important to note that antennas are passive devices and don't actually add any power to the signal provided by the reader: gain in this context refers to the increased power received by a device in the best direction relative to the average of all directions. Gain varies tremendously for different antenna designs. A very common antenna, the *dipole* antenna, is fairly close to an isotropic radiator: the dipole sends no radiation along its axis, but transmits equally in all directions perpendicular to the axis and nearly as well to directions at more than a few degrees away from the axis. The gain of a dipole antenna – the ratio of the power density along the direction of maximum radiated power to the average of all directions – is only about 1.7:1 or 2.3 dB<sup>1</sup>. Note that gain is often reported as 'dBi', the 'i' denoting the use of an ideal isotropic antenna as the reference. A dipole antenna is a good choice when all tags in any direction along a plane are to be read. Radiation from a dipole is polarized along the axis of the dipole; thus, a tag whose antenna is also a dipole should be oriented in the same direction as the reader antenna in order to be read effectively.

<sup>1</sup> dB = deciBel is a method of logarithmically describing the ratio of two power levels;  $P_{21} \text{ (dB)} = 10 \log_{10} (P_2/P_1)$ . Thus 10 dB represents a factor of 10 in power.



The recommended antenna for the Stationary portal reader, WJCI model AN120, provides a pair of circularly-polarized panel antennas in a single package, with excellent transmit-receive isolation and return loss. This antenna provides about 6 dBi of gain on both transmit and receive.

In principle, antenna gain could be increased to increase read range. However, in most jurisdictions, the maximum gain employed in unlicensed operation is limited by regulation. For example, in the United States, the FCC limits the *effective isotropic radiated power* (EIRP, the product of the actual power and the antenna gain) to 4 watts. The Stationary portal reader, which is rated at 1 Watt output, cannot use an antenna with more than 6 dBi of gain.

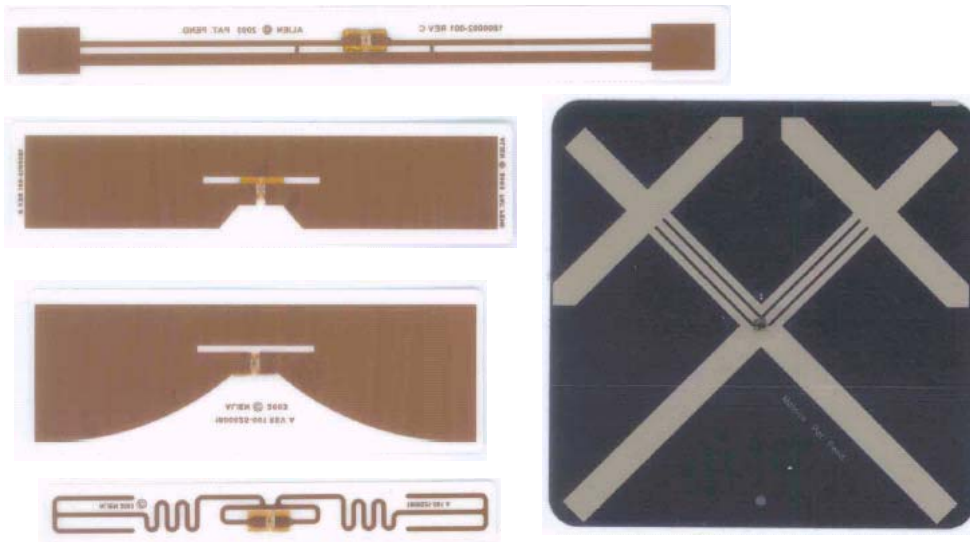
Note that the recommended antennas have been specifically approved for use with the Stationary portal reader in the United States by the FCC. FCC regulations (title 47 part 15) require that antennas be approved for use with specific radio communications devices, unless they are installed by a professional installer, and that in all cases the combination of antenna and radio device must operate within regulatory constraints.

External antennas are generally connected to the reader using flexible coaxial cables and connectors. It is important to select these cables and connectors appropriately for the application. The stationary portal readers use mini-UHF connectors on the reader; the recommended AN120 antennas are equipped with type-N connectors. Both are mechanically robust and convenient. When the antenna must be mounted a long distance from the cable (more than 3 meters), a large-diameter low-loss cable, such as RG-213 or RG214 should be used.

The electrical impedance presented by an antenna is a complex function of the frequency, the antenna shape, and the near-antenna environment. Antennas are carefully designed so that the electrical impedance of the antenna is well-matched to the impedance of the device to which they are connected. For example, the Stationary portal readers will generally employ a cable with 50 ohm characteristic impedance to connect the reader to the antenna. In order for the power from the reader to be effectively transferred to the antenna, the antenna must have an electrical impedance close to 50 ohms, with little capacitance or inductance, at the frequency of operation. As noted previously, conductive objects or some other materials such as aqueous liquids placed close to an antenna will change its impedance and thus degrade its match to the cable. For best read range, keep such obstructions away from the antenna in directions of maximum directive gain.

### 1.4.3.3 Tags

A UHF RFID tag typically consists of a specialized integrated circuit (IC) attached to an antenna structure fabricated on an inexpensive flexible plastic substrate. The antenna and substrate designs vary considerably to meet the needs of specific applications. Tags may be configured to respond primarily to one linear polarization, to have some response to both orthogonal directions, or to provide multiple antennas with capability for switching the IC to the best direction at any given moment.



The natural size for an antenna structure for a given wavelength  $\lambda$  of electromagnetic radiation is about half of the wavelength:  $\lambda/2$ . Since the wavelength is about 33 cm at 915 MHz, the natural size for a simple antenna is about 16 cm (6.5 inches). Half-wave antennas radiate and receive effectively, and tend to have convenient nearly-resistive impedances: they are *resonant*. However, for many applications such an antenna is excessively large. Many tags are designed with antennas that are smaller than  $\lambda/2$ . While such antennas may be configured to provide good impedance matching, some compromise in radiation efficiency is inevitable: in general, smaller antennas will not perform as well as half-wavelength antennas. Tag antennas may be bent or curved to conserve space and allow some response to multiple linear polarizations; however, in this case only the regions of the antenna that are along the polarization direction contribute to the received signal, so again the received power is reduced. Note that most tag antennas are incorporated onto a flat plastic substrate and are thus themselves in a plane; like a dipole, the tag antenna does not transmit and cannot receive signals whose direction of propagation lies in this plane. A tag cannot be seen by the reader when it is viewed on edge.

Tag antennas are also sensitive to their local environment, a fact that is of particular import since tags are meant to be attached to objects. Many common materials, such as paper and most plastics, have little effect on microwave propagation; tags can be attached readily to cardboard or plastic boxes or containers without affecting their operation. However, large metal objects have important effects both on the local electric fields and the impedance of nearby antennas. Tag antennas cannot be attached directly to metal plates or boxes without suffering degraded performance. Tag antennas spaced 5 mm to 1 cm (0.2 to 0.4 inch) from a metal surface can perform acceptably, particularly if designed for near-metal service. Aqueous fluids (water and water-containing materials such as milk, juices, most cleaning fluids, etc.) also have a strong effect on local field intensity and may affect tag antenna impedance as well, depending somewhat on the tag design. Again the best operation of a tag will be obtained if it is kept at least 1-2 cm from bodies of aqueous fluid.

The received signal from a tag antenna is connected to an integrated circuit. Tag IC's are very small (to keep the cost of manufacturing low), and are typically embedded in a plastic coating for mechanical protection. The IC contains a rectifying circuit to convert the received 900 MHz signal to a DC voltage used to power the remainder of the IC. Variations in the received power are converted to variations in a DC voltage, providing the IC with a method of sensing information transmitted by the reader. The IC can also modify the impedance it presents to the antenna, by using a transistor as a switching element, thus causing a variation in the signal reflected back to the reader and enabling the tag to communicate back to the reader without needing its own radio transmitter.

The necessity of powering the tag is an important limitation on the read range. Tags require a few 10's of microwatts of RF power to operate, limiting the range to about 10 meters with the recommended antenna pair. When linearly-polarized reader antennas are used, read range may be degraded by misorientation of the tag. Most indoor environments have very complex propagation characteristics, with the transmitted signal reflecting off numerous obstacles such as walls, floors, other tagged objects, people, vehicles, desks, tables, etc. As a consequence, the signal strength can vary by a factor of 10 or more between two neighboring locations separated by about a half-wavelength (16 cm or 5 inches): this phenomenon is known as *fading*, and is encountered in most wireless communications systems. A tag with the misfortune to find itself in a fade may fail to power up, while a tag farther from the reader but happily located in a region of maximum signal strength responds readily. Thus there is no reliable simple correlation between tag location the likelihood of reading a tag. The exact signal strength is sensitive to the positions of all reflecting / diffracting objects in proximity to the read region (including people and their tools and toys) to an accuracy of much less than a wavelength, and thus in practice is impossible to predict or control.

The best approach to deal with fading is the use of *diversity*: intentional variations in the propagation environment to ensure that each tag finds itself in a region of decent signal strength at some point. Diversity can be achieved by alternately employing two antennas in slightly different positions (displaced by at least a half a wavelength); the Stationary portal readers can be operated in this fashion by the four antenna pairs in succession. Alternatively, the location of the tags relative to the reader antenna(s) can be varied; this beneficial effect occurs naturally when the tags to be read are moving on a conveyerized belt, or are rotated as a pallet of boxes is wrapped with plastic in preparation for transport.

### 1.4.3.4 System integration

An RFID reader can collect large amounts of data, often much more than would have been obtained by a human being employing a bar code reader. To convert this data into knowledge may require considerable filtering. For example, if a fork lift driver moves a pallet out of a door, then returns to the facility to correct an error in some paperwork, and finally drives out through the door to the truck again, the reader may take three inventories of the same pallet, but it is rarely desirable to treat the resulting information as suggesting that the same items were shipped three times. On the other hand, if the pallet is returned by a hand truck, and the operator's colleague stands in front of the reader antenna during the transfer, the reader may fail to record some or all of the tags. A successful RFID implementation requires the integration of appropriate procedures for human workers to follow in placing and using tags and objects carrying them, careful installation of reader hardware, and the right *middleware* to convert the raw data from the reader into information useful for operating the business.

Procedures are intimately connected with the planned usage for the RFID tags. Are the tags attached to individual items, boxes, or a pallet or other large container? Are the items to be inventoried on a shelf, counted as they move along a conveyerized transport belt, or tracked through a door? Can the orientation of objects to be read be controlled or must the reader account for randomly-oriented tags, and does this include tags placed end-on to the reader? What is the desired read range? Do the objects to be labeled

contain metals or aqueous fluids, and if so can the tags be placed sufficiently far from these disturbing influences to be read? Is the necessary read reliability 90%, 99%, or 99.9%? Given the answers to such questions, the implementer can then develop procedures to ensure that the desired reliability is achieved.

As might be inferred from the discussion in section 1.4.3.2, selection and placement of reader antennas is a critical consideration for a successful installation. The stationary portal readers can be connected to up to four external antenna pairs; these antennas should be configured to reliably cover the region over which tags are to be read. For example, at a doorway, one directional antenna may be placed < 1 meter (3 feet) from the ground and the other around 2 meters (6 feet) high, thus providing good coverage of the whole door area. When many readers are used in close proximity, consideration should be given to minimizing interference between readers; for example, configurations in which one reader antenna looks directly at a neighboring reader's antenna should be avoided. It may be useful to provide reflective or absorptive shielding between reader installations.

The lower levels of middleware, dealing directly with the reader population, must incorporate very specific knowledge about the use procedures and environment in which the tags are being read, and are likely to be highly customized for each application. This software must provide filtering and aggregation capabilities to ensure that the data that is forwarded to the enterprise information systems is correctly categorized and representative of what is happening to the physical inventory of objects being tracked. Once this has been accomplished, the integration of a properly filtered and aggregated dataset with a standard enterprise resource planning package such as those available from vendors like Oracle or SAP is a reasonably well-established function, with the necessary customization provided by a large number of third-party vendors.

## 1.4.4 RFID standards

Bar codes for commercial products are standardized worldwide under the auspices of the Uniform Code Council and EAN International. In September of 2003, these organizations joined with the AutoID Labs headquartered at the Massachusetts Institute of Technology to form EPC Global Inc., chartered with the standardization of a generalization of the bar code system, the **Electronic Product Code** (EPC), as well as the creation of software and hardware standards to support the use of RFID systems in implementing identification of objects by means of EPC's. This work is intended to complement existing and ongoing activities at the **International Standards Organization** (ISO), where many standards for the operation of LF and HF RFID systems have already been defined.

### 1.4.4.1 EPC Global

EPC Global is creating a set of standards intended to provide a robust infrastructure for the proliferation of RFID technology:

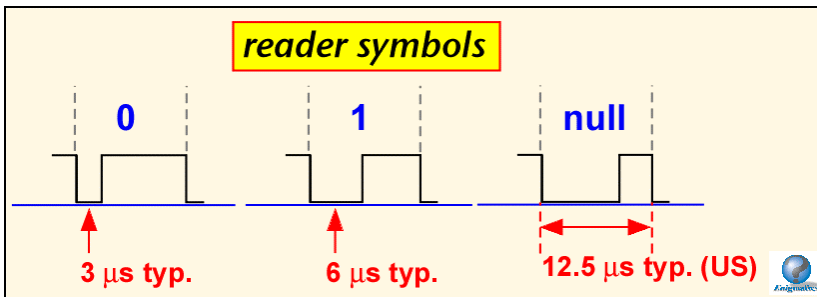
- EPC Tag data: the standards define various formats for the unique identifier (EPC) for each tag, to be consistent with existing EAN/UCC standards: serialized version of the EAN.UCC Global Trade Item Number (GTIN®), the EAN.UCC Serial Shipping Container Code (SSCC®), the EAN.UCC Global Location Number (GLN®), the EAN.UCC Global Returnable Asset Identifier (GRAI®), the EAN.UCC Global Individual Asset Identifier (GIAI®), and a General Identifier (GID).
- UHF Tags: partial specifications for first-generation 'class 0' (factory-write-only) and 'class 1' (field-write allowed) tags are public. A second-generation standard for class 1 tags is in progress at the time of this writing.
- Physical Markup Language: In order to provide a standardized framework for exchange of EPC data between organizations, EPC Global is defining a **physical markup language** (PML) based on the popular extended markup language (XML) widely employed in web communications. In addition, standards for **object name servers** (ONS), analogous to the domain name servers employed to facilitate communications over the Internet, are being defined. Finally, specifications



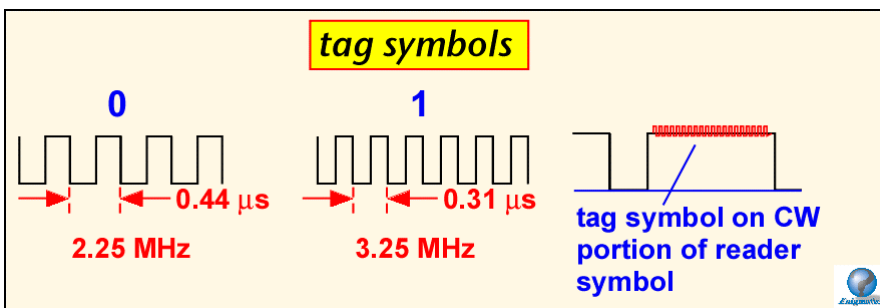
simple error checking. However, if the EPC (ID2) is being used for singulation, it has the consequence that the reader sends some or all the bits of each tag's EPC. Since it is much easier to intercept high-powered reader transmissions than the low-power tag reflections, if security of tag EPC's is a concern, ID2 should not be used for singulation. Note that once a tag is singulated, the EPC can be read without echo by the reader.

The protocol also allows for *filtering*, in which the inventory process is performed only on tags whose ID2 contains a fixed bit string provided by the reader. Filtering can be used to inventory only tags assigned to a particular manufacturer or a particular product type.

Amplitude-modulation is used to transmit information from the reader to the tag. In order to maximize the power simultaneously provided to the tag, special coding is employed to ensure that the reader power is high most of the time. The particular scheme employed here is known as *pulse-interval modulation*. In each symbol, a short low-power pulse (1/4 of the bit time) denotes a binary 0, and a longer low-power pulse (half of the total bit time) denotes a binary 1. Thus the average transmitted power for a string with an equal number of 1's and 0's is 5/8 of the CW power. A long low-power pulse (3/4 of the bit time) denotes a special 'NULL' character, which appears infrequently and thus has little effect on the average power delivered to the tag. In the United States, a data rate of 80 kilobits per second (Kbps) is used. In Europe, a lower 16 Kbps rate is employed in order to operate within a narrower allowed channel.



Communication from the tag to the reader employs a sub-carrier modulation, in which the tag inverts states at a rate much faster than the data rate. In the particular scheme used in this protocol, the tag sends a 2.25 MHz backscattered signal for a binary 0, and 3.25 MHz for a binary 1. Tag backscatter is performed on the 'high' portion of each reader bit. Sub-carrier signaling has two benefits: the reader need only detect transitions of the tag state without regard to the direction of the transition (up or down), and if two or more tags simultaneously backscatter binary 1 and binary 0, the presence of both symbols can be detected by the reader, allowing it to gather some information about the tag population even when collisions are present.



Each time power is turned on, the reader proceeds through a set of steps to initialize the tag IC timing. First, the reader transmits a RESET consisting of  $800\ \mu\text{s}$  of CW power. A tag's "ID'd" flag (telling it that it was already read by the reader) may survive a RESET, but in other respects the tag returns to its default state. After the RESET, 8 pulses are used to calibrate the tag internal oscillator to the 2.2 MHz sub-carrier frequency. Finally, a set of pulses of varying length is transmitted to set the thresholds for distinguishing between 0, 1, and null, and to signal the tag when to begin its transmission.

In the United States, communications devices operating in unlicensed bands must either use direct-sequence or frequency-hopping spreading techniques. The Apollo series products use pseudo-random hopping from one frequency to another. The Class 0 protocol does not require the reader to power down during hops, but the Apollo series stationary reader does in order to minimize spurious radiation. Therefore, a RESET / calibration sequence is necessary after each hop. The time between hops is available for the user to adjust, although regulations require that the transmitter remain on any given frequency for no longer than 400 ms at a time. In Europe, revised regulations allowing 10 channels have been promulgated and it is anticipated that with the passing of time frequency-hopping operation will become the normal means of operation in most European jurisdictions. European regulations will require that the reader *listen before talking*: that is, the reader must check each putative channel for other active transmitters before beginning its own transmission. Note that the MPR5000/6000/7000 operate at 902-928 MHz and are not approved for use in Region 1 (European) jurisdictions.

Tags have 10 possible states, roughly corresponding to [startup / calibrate], [global commands], [binary tree traversal], and [singulated commands]. Each command is 8 bits long, with an additional parity bit provided for error checking. The tag echoes each bit it receives in order to provide a simple error check and acknowledgement function. Mandatory commands are:

- ResetIDFlag: resets the identified flag to NOT READ; that is, it forces tags to forget whether they have been previously inventoried.
- SetNegotiationPage: this curious terminology is used to describe the choice of ID (ID0, 1, or 2) used for singulation during binary tree traversal.
- SegRegionofOperation: sets the backscatter parameters according to whether the device is operating under FCC or European regulations.
- ForceDormant: tags receiving this command immediately enter the Dormant state. The Dormant state is the default tag turn-on state, exited when a RESET is received.
- ForceMute: tags receiving this command immediately enter the Mute state. In the Mute state, the tags receive data but do not respond until a NULL is received. Tags that have been bypassed during traversal reside in the Mute state until the next traversal begins.
- Read: Read ID1 or ID2 (ID0, being randomly generated at the time of request, has no enduring interest and need not be read from the tag).
- Kill: Permanently disables the tag if a valid argument (passcode) is provided.

#### ***1.4.4.1.2 EPC Class 1 Summary***

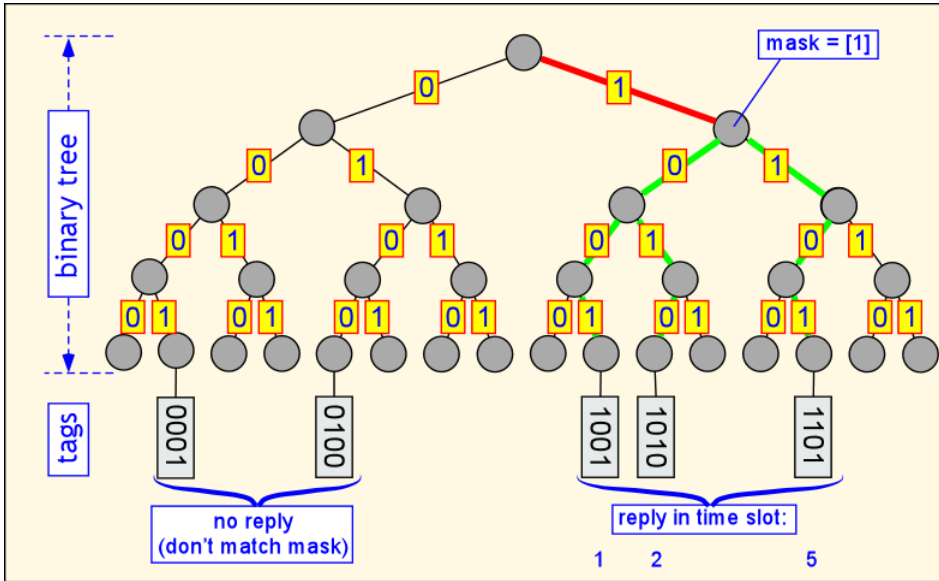
In this section we provide a very brief introduction to the operation of class 1 tags. Further information may be obtained from the document “Candidate Specification 860 MHz – 2500 MHz – Class 1 RFID Air Interface”, revision 1.02, available from the EPC Global Inc. web site.

Class 1 tags are nominally factory-programmed but the write operation employs the radio interface and could be performed at manufacture or in the field. It is expected that once the tag is written to, the memory is locked and further write operations are disallowed. Each tag contains a nominal 64 bit or 96-bit EPC and a 16 bit *cyclic redundancy check* (CRC) in non-volatile memory. The CRC is independently recalculated by the reader when the EPC is read, and checked against that provided by the tag to check for errors in the read. Unlike class 0 tags, where the tag responds immediately to each bit sent by the reader, class 1 tags use a more conventional packet-oriented protocol, with the reader transmitting a packet containing commands and data, followed by a response by the tag.

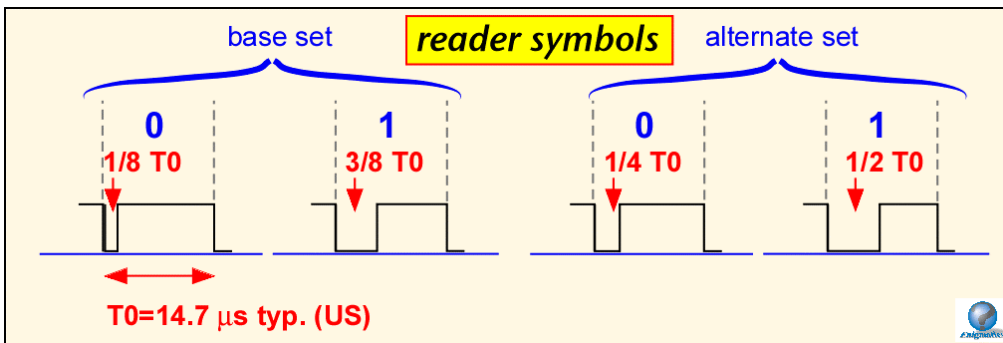
When more than one tag is in the field of the reader, the reader employs a binary-tree traversal to resolve possible collisions and individually address each tag (*singulation*). To begin the traversal, the reader sends a filter string consisting of a pointer location and a bit stream. The pointer location indicates where the bit stream starts in the EPC. Each tag tests the relevant portion of its EPC; those whose bits match the transmitted bit stream then send the next 8 bits of their EPC back to the reader. Filtering is thus



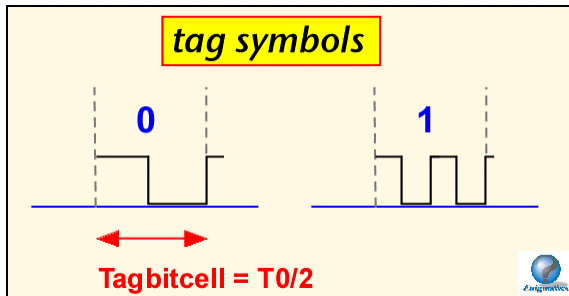
incorporated in passing into the protocol. There are eight time slots for response, with the one chosen dependent upon 3 of the reply bits. This time slot mechanism provides some collision resolution and a simple error-checking mechanism. A simplified version of such a traversal is shown in the diagram below. If the reader hears only 1 tag in a given bin, the reader can immediately request that tag's full ID. Note that with this mechanism, the reader may but need not transmit all or much of the tag's EPC. Where security is an issue, large sections of the EPC should not be used as filters.



Amplitude-modulation is used to transmit information from the reader to the tag. In order to maximize the power simultaneously provided to the tag, special coding is employed to ensure that the reader power is high most of the time. Class 1 tags use a *pulse-interval modulation* scheme quite similar to that employed by class 0 tags. There are two options provided: a base set using a low pulse of  $1/8$  of a bit time for a binary 0 and  $3/8$  for a binary 1, and an alternate set using times of  $1/4$  and  $1/2$  of a bit time respectively (just like the class 0 symbols). There is no NULL symbol. Thus the average transmitted power for a string with an equal number of base-set 1's and 0's is  $3/4$  of the CW power. In the United States, a data rate of about 62 kilobits per second (Kbps) is typically used. In Europe, a lower 15 Kbps rate is employed in order to operate within a narrower allowed channel.



The return link uses a simple form of subcarrier modulation, *F2F*. Each bit time begins with a transition in the tag state. To transmit a binary 0, the tag adds one transition in the middle of the bit. To transmit a binary 1, 3 additional transitions are employed. (Thus, a string of binary 0's has a fundamental frequency of  $(1/T_{bit})$ , whereas the fundamental frequency of a string of binary 1's is  $(2/T_{bit})$ , hence the name of this coding scheme.) Each tag bit occupies  $1/2$  of the time used for a reader bit, so that the nominal data rates are about 140 Kbps in the US and 30 Kbps in Europe.



Instead of employing a single long RESET and synchronization for a sequence of exchanges, as is done in class 0, class 1 provides packet-by-packet tag synchronization. Each packets starts with a  $64 \mu\text{s}$  CW period to power up any tags in listening range, followed by data. During binary tree traversal, the reader then sends a binary 1 to mark the edge of a response time slot or 'bin', so the tags have no need to maintain an accurate clock to time the edges of the 8 possible response bins. A tag that response begins its packet with a fixed 8-bit preamble, followed by the next few bits of its EPC, or in the case of a full scroll the remainder of the EPC.

Tags have six possible states: Power Up, Awake, Asleep, Reply, Program, and Dead. Responses to commands depend solely on the current state and not on how the tag arrived there. The basic commands are:

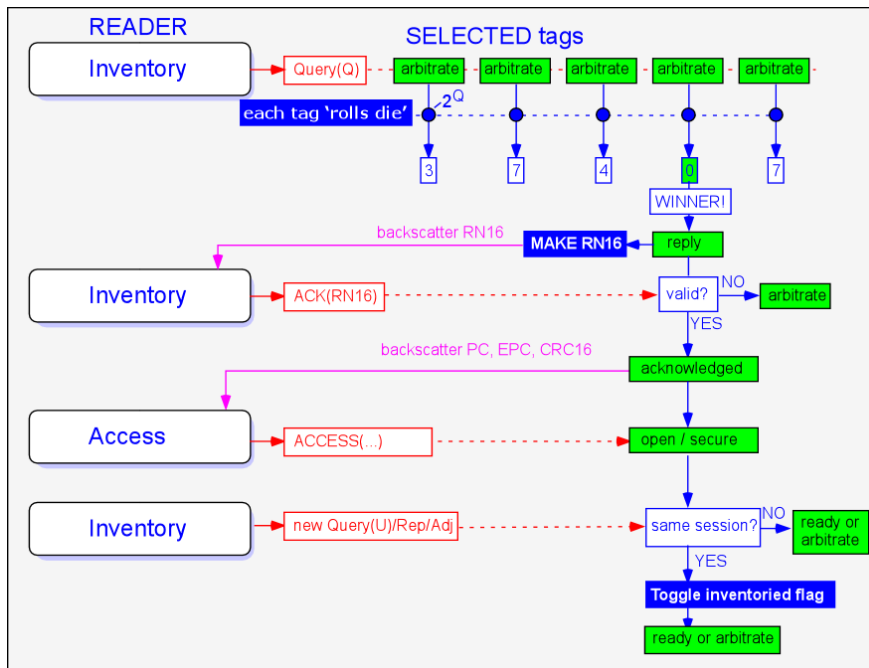
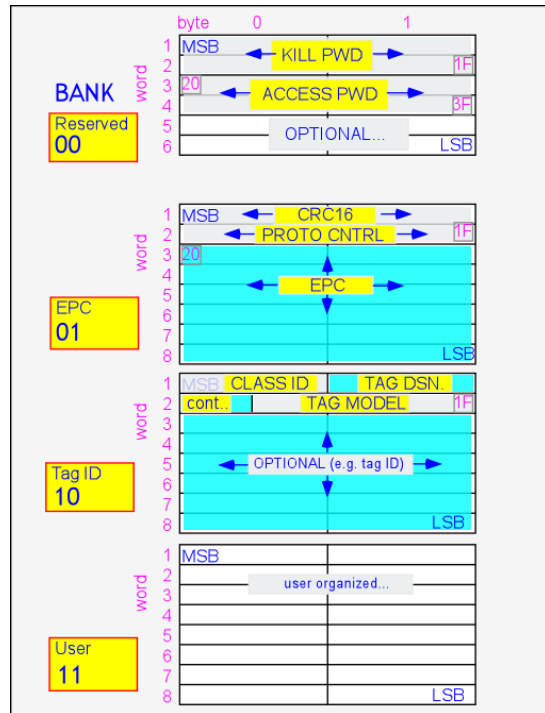
- ScrollIID: a tag whose EPC bits match the filter bits responds with its complete EPC
- Quiet: a tag whose EPC bits match the filter bits goes to sleep
- Kill: Permanently disable the tag if a valid argument (passcode) is provided.
- PingID: a tag whose EPC bits match the filter responds with the next 8 bits of its EPC
- Talk: a tag whose EPC bits match the filter bits wakes up
- ScrollallIID: all tags hearing this command respond with their full EPC
- Pincscroll: Optional command allowing quick scroll of full ID from any tag that is the sole responder in a given bin.

### 1.5.4.1.3: EPCGlobal Class1 Gen II Summary

EPCGlobal has ratified an improved 'second-generation' class 1, usually known as the Gen II standard. The Gen II standard differs significantly from the earlier class 0 and class 1 standards. Some of the salient features are summarized here.

Gen II tags have a memory organized into banks. Each bank is further subdivided into two-byte words. Bank 00<sub>2</sub> is reserved for the access codes and kill passwords. Bank 01<sub>2</sub> contains the unique EPC, corresponding error check (CRC), and protocol control bits. Bank 10<sub>2</sub> contains optional information about the tag itself. Bank 11<sub>2</sub> is user memory and may be organized in any convenient fashion.

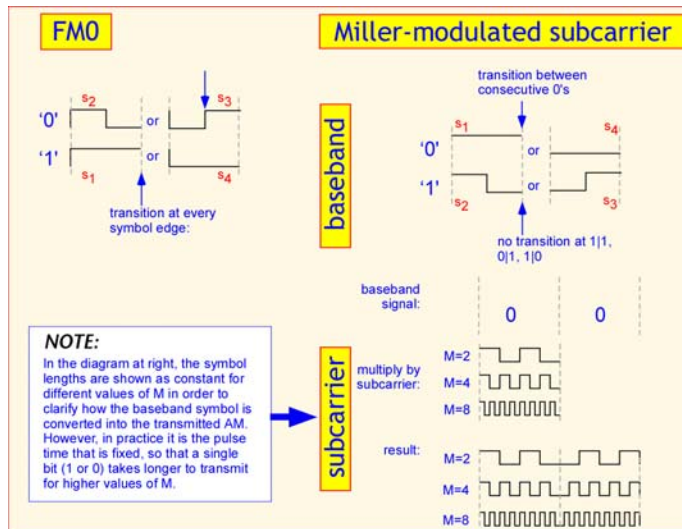
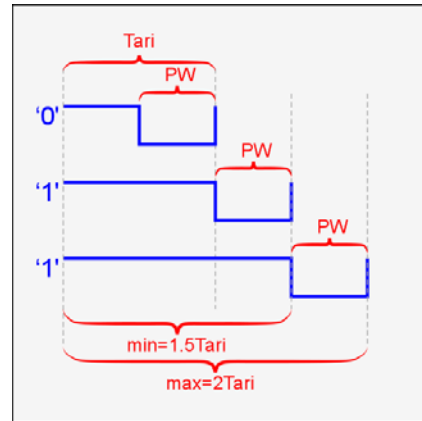
Collision resolution in Gen II uses a different approach from the binary-tree-based algorithms used in class 0 and class 1 tags. Gen II uses a variation of slotted Aloha, somewhat similar to the collision-resolution employed in Ethernet networks. If multiple tags are present in the field, the reader can issue a Query command with a parameter Q that describes the size of the arbitration space. Tags randomly select an arbitration value from 0 to 2<sup>Q</sup>-1, and then decrement that value on each succeeding QueryRep command until the value reaches 0. Tags that have a zero-valued counter reply to the Query. If the reader sees few responses, it can change the value of Q to make the arbitration space smaller. If the reader sees many collisions, the value of Q can be increased to make more room to arbitrate large numbers of tags.



Up to 4 simultaneous inventory sessions can be supported by each tag, using separate status flags for each session. Because the singulation process makes use only of random numbers generated as needed to support reader communications, the reader never transmits the EPC of the tag, reducing the likelihood of interception of any sensitive information.

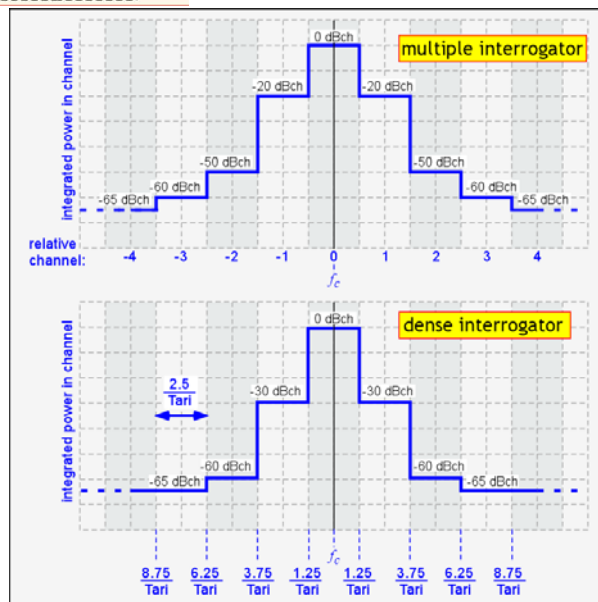
The reader and tag physical-layer symbols and modulation are different from those used in class 0 or class 1. The reader employs pulse-interval encoding. A binary '0' is a high-low pair, and the length of this symbol defines the important reference time  $T_{ari}$ . The binary '1' consists of a high-period at least  $T_{ari}$  long, followed by a low power pulse of the same duration  $PW$  as the 0. The binary '1', as shown in the diagram, is at least 1.5  $T_{ari}$  long but may be as long as 2  $T_{ari}$ .

The reader packet preamble for Query commands includes a time reference signal,  $TR_{cal}$ , that the tag uses in combination with a **divide ratio** DR to determine the data rate it should use for its reply.



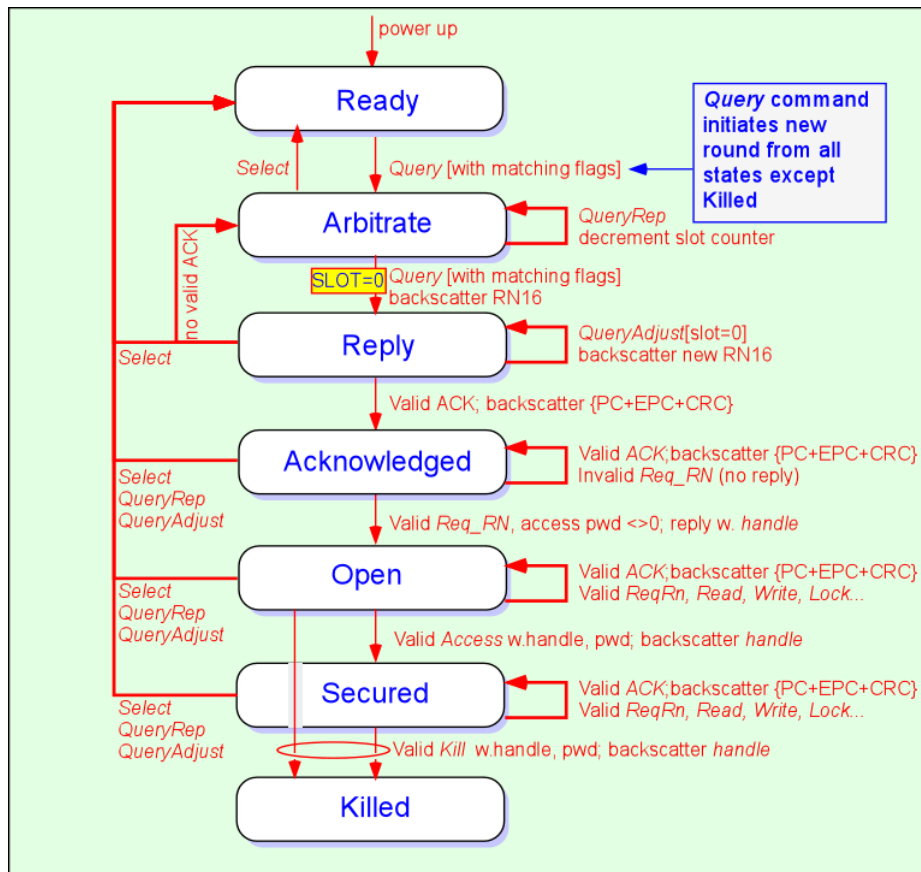
Depending on what the reader requests, the tag may reply using FM0 modulation (similar but not identical to the F2F scheme used in the class 1 tags), or a **Miller-modulated subcarrier** (MMS) symbol set, basically consisting of FM0 symbols multiplied by a higher-frequency square wave. This system supports a wide range of data rates from around 20 Kbps to 640 Kbps, and corresponding variations in tolerance to noise and interference, at the cost of some extra intelligence required from the tag IC.

The Gen II standard also provides for three different types of readers. **Single interrogators** are readers that simply meet local regulations for RF emissions, and are substantially the same as currently-available technology. **Multiple-interrogator** readers are certified to meet a more demanding spectral emission mask, in which reader emission into adjacent frequency channels is reduced by at least 20 dB, and into next-adjacent channels by at least 50 dB. Finally, **dense interrogator** readers are required to suppress adjacent-channel emission by at least 30 dB, and next adjacent channel emission by 60 dB, as shown in the diagram.



An active Gen II tag can be in one of 7 states. The Ready state is entered when the tag

powers up. A Query command from the reader causes the tags whose flags match the Query to enter the Arbitrate state, in which they create a slot counter value and decrement it on successive Queries until the counter value reaches 0. When the counter is 0, the tags enter the Reply state and attempt to send a random number to the reader. If the reader echoes that random number, the tag sends its unique EPC and enters the Acknowledged state. Once a tag has been Acknowledged, the reader can send individual commands to that tag in either an Open (non-secure) state, or using simple one-time-pad encryption in the Secured state. Finally, a tag can be Killed; after acknowledging its demise, the tag should remain in the Killed state permanently and no longer respond to any commands.



Reader commands are intentionally of differing bit lengths, in order to save link time and provide some simple error checking. Some commands also use a packet error check (CRC) to detect bit errors.

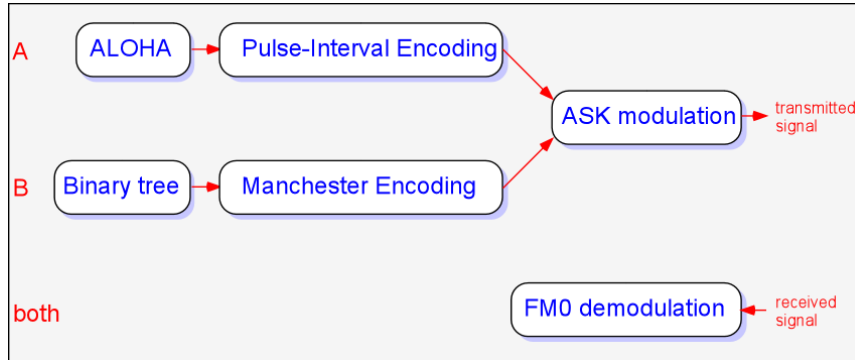
### 1.4.4.2 ISO

The international standards organization has defined a number of standards covering RFID hardware and operation. Currently, ISO is defining a series of tag and reader standards under ISO 18000, covering operation at LF, HF, UHF, and microwave bands. ISO 18000-3 describes 13.56 MHz tags and readers, generally assuming a thin, flexible form factor appropriate to smart cards or labels. ISO 18000-4 describes operation at 2.45 GHz, including both passive and active versions. ISO 18000-6 describes two variant forms (A and B) of UHF tags. Finally, ISO 18000-7 describes active tags operating at 433 MHz, providing long range and high data rates but at much higher expense than passive tags.

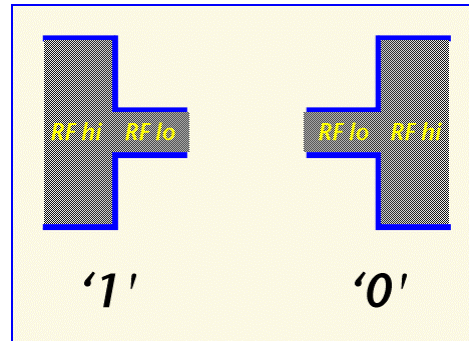
ISO 15963 specifies unique tag identification numbers, and 15961 and 15962 specify data protocols and encoding. ISO 18046 and 18047 specify test methods for tags and readers.

### 1.4.4.2.1 ISO 1800-6 Summary

ISO18000-6 describes two variants, type A and type B, using distinct forward-link modulations, collision-resolution approaches, and command sets, though both use FM0 modulation for the tag-to-reader link. The Stationary portal reader supports ISO 18000-6B.

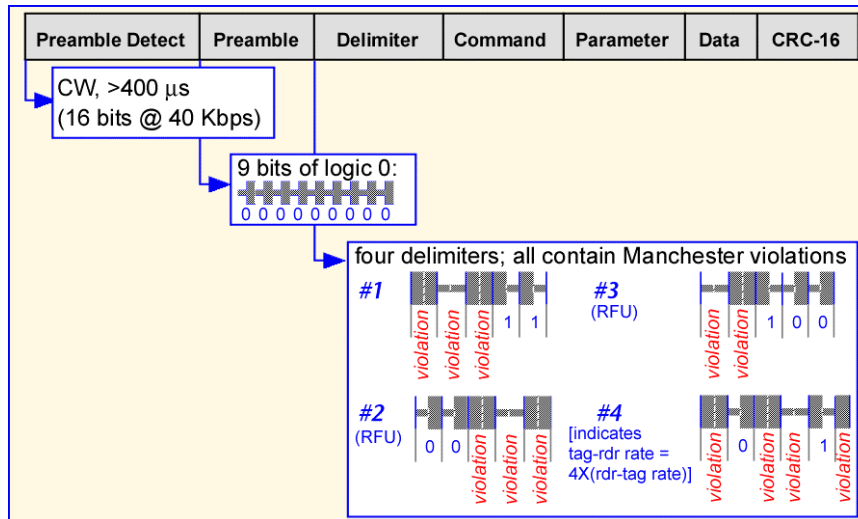


In the 18000-6B variant, Manchester-encoded symbols are used by the reader, with amplitude-modulation depth of either 100% or 11%. Binary '0' and binary '1' symbols have the same duration, but the opposite order: a '1' begins with RF power high, whereas a '0' begins with RF power low. There is no requirement for a power transition at every symbol edge, so the tag must be able to synchronize with the reader and sample at the appropriate times to avoid misinterpreting transmitted symbols.



The tags use FM0 (same as the basic Gen II modulation, described in section 1.4.4.1.3 above) to communicate back to the readers.

The communications protocol is packet-based with a relatively complex reader packet.



The tag replies with a simpler packet after a wait time that depends on the current data rate.

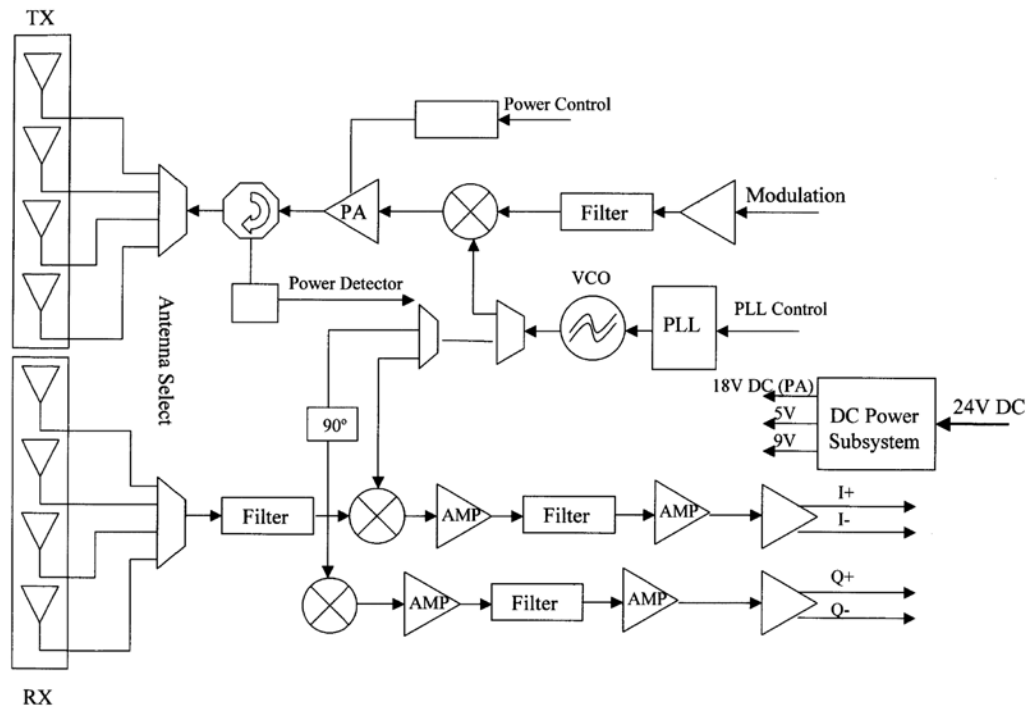
Quiet	Return Preamble	Data	CRC-16
-------	-----------------	------	--------

The tags maintain 8 flags, though only 4 are currently used. Two of the flags track initialized status and write status; the other two are related to battery-powered tags. Tag memory is organized as up to 256 blocks of 1 byte each. The tag state diagram is relatively simple, with four basic states: power-off, ready, ID, and data\_exchange. Collision resolution employs another slotted-Aloha variant. Instead of changing the size of the singulation space in response to collisions, the reader issues a failure notice, causing tags with non-zero counter values to increment their counters. When a successful singulation occurs, the reader issues a success notice causing tags to decrement their counters. Thus when collisions are frequent, tags will count up and respond infrequently; when collisions are rare, tags will count down and respond.

There are mandatory commands for selecting or unselecting groups, initializing a tag population, and sending SUCCESS or FAIL notices to the tags, and reading tags. Additional commands for WRITE and LOCK functions are recommended but not required.

## ***1.5 Stationary portal RFID Reader Theory of Operation***

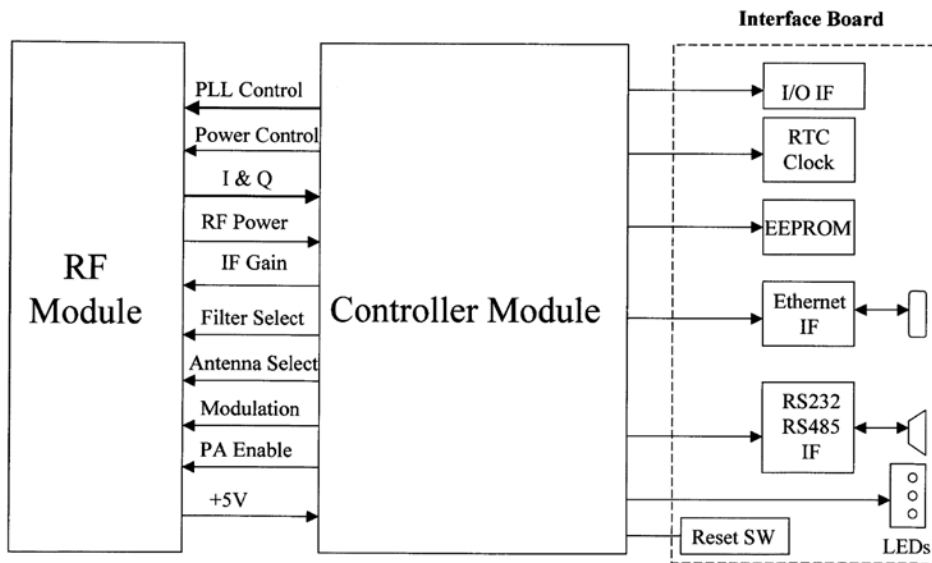
The Stationary portal RFID reader consists of a transmitter and receiver, both employing the same local oscillator and direct up- and down-conversion from the carrier frequency, configured for operation within the US Industrial Scientific and Medical (ISM) band at 902-928 MHz. The transmitter signal both provides power to passive tags and delivers commands to the tags. The system is thus full-duplex in the sense that the transmitter continues to operate during reception of tag signals, but half-duplex in terms of data transmission, since when tag data is being received the transmitted signal is unmodulated CW. In a typical exchange, the transmitter first powers up and sends a CW signal to provide power to tags in the read zone. Then a baseband on-off-keyed modulation, appropriately filtered, is imposed on the CW signal with a mixer. The reader data provides tags with synchronization information, requests tags to transmit their unique IDs and other data in memory, and may write new data to a tag or erase its memory, etc. After a command is given, the transmitter continues to transmit unmodulated CW power at the carrier frequency; this CW signal both provides power to operate the tag's integrated circuit, and provides the RF signal that the tags backscatter to send their signals back to the reader. The details vary depending on the protocol being used; see section 1.4.4 for a discussion of the differing protocols.



The backscattered signal is filtered and then mixed to baseband using the same VCO signal employed by the transmitter; the Stationary portal reader is a *homodyne* radio. In-phase / quadrature (I/Q) demodulation is employed in order to ensure that the baseband signal can be received despite variations in the absolute phase of the reflected carrier. (Without this provision, depending on the exact separation of the tag and reader antenna, the cable lengths, and other factors that cannot be controlled, the reflected signal would at times be in quadrature with the signal from the VCO, so that the mixer would produce no baseband output.) The outputs of the two mixers are filtered and amplified and then demodulated to extract the reflected signal from the tags. After each command set the power shuts down while processing of the commands proceeds. The nominal channel spacing is 500 KHz, providing 50 channels (with guard bands) within the ISM band. In accordance with FCC regulations, the carrier frequency periodically ‘hops’ in a pseudo-random fashion over the ISM band to avoid persistent interference with other unlicensed users.

The overall system consists of the RF module, a controller, and interfaces to serial and Ethernet ports for communication with a host computer or network.





## 1.6 Host-Reader Interface

If you want to create your own software to communicate with and control stationary portal readers, see the document “SR2200 UHF Multi-Protocol RFID Reader RS-232 Serial Port Host Interface Protocol” for control using the serial port.

## 1.7 Troubleshooting / technical support

## 1.8 Technical specifications

Parameter	Specification
Operating Frequency	US ISM band (902-928 MHz); frequency-hopping
Protocol support	EPCGlobal Class 0, Class 0+, Class 1 Gen 1 and Gen 2
RF Transmit Power	1 Watt
Read Range	6 meters [20 feet] typical
Antenna ports	Up to 4 pairs of (Transmit/Receive); mini-UHF connectors
Reader modes	Host initiation mode or autonomous operation based on timer or external trigger
Host interface	Serial control over RS232, or TCP/IP over Ethernet; complies with EPCGlobal draft Reader Host Specification
Operating temperature	0 to 50°C (32 to 122°F)
Storage temperature	-20 to 70°C (-4 to 158°F)
Power supply	24 VDC, 2.5 A
FCC certification	FCC part 15 unlicensed operation [PENDING AT TIME OF WRITING]

## **1.9 Notices**

### **1.9.1 RFID limitations**

Communication between tags and readers at UHF frequencies is a complex phenomenon depending on details of the environment surrounding the tags and reader(s) as well as the equipment being used. Some environmental aspects (such as tag placement and orientation) may be controllable by the user; others (such as reflections of the RF radiation by ambient objects) are generally not. Careful installation and testing, and development and adherence to appropriate operating procedures, are indispensable for successful implementation of RFID. WJ Communications Inc. makes no representation or warranty that any specific configuration of RFID tags and readers will provide any given performance characteristics.

### **1.9.2 Safety**

Any use of this equipment with antennas or cabling installed outdoors or otherwise exposed to inclement weather must avoid proximity with power lines or other high-voltage conductors, and provide for proper grounding and lightning arresting devices to protect the equipment user in the event of a lightning strike. See National Electrical Code (NEC) requirements articles 725, 800, and 810 for further information.

Do not operate the stationary portal readers in any area where critical safety equipment may be sensitive to RF interference, such as medical or life support equipment.

Do not operate the stationary portal readers on board any aircraft in flight, or at any other time when operation of radio devices such as cellular phones is prohibited.

Personnel should not be closer than 23 cm (9 inches) from any Stationary portal reader antenna for prolonged periods of time. See FCC bulletins 56 and 65 for further information on electromagnetic field exposure.

### **1.9.3 Limitation of liability**

The information in this manual is subject to change without notice and does not represent a commitment on the part of WJ Communications Inc. WJ Communications, Inc. specifically disclaims liability for any and all direct, indirect, special, general, incidental, consequential, punitive or exemplary damages, including but not limited to loss of profits, revenue, or anticipated loss of profits or revenue, arising out of the use or inability to use any WJ Communications Inc. product, even if WJ Communications Inc. has been advised or the possibility of such damages or they are foreseeable, or for claims by any third party.

### **1.9.4 Patents**

Portions of the products described in this manual may be covered by granted or currently-pending US and foreign patents.

### **1.9.5 Copyright notice**

The contents of this document are the property of WJ Communications, Incorporated, except where otherwise noted. Individuals who have purchased or otherwise legally acquired the stationary portal reader hardware units described in this document are expressly permitted to make copies of the document, in electronic or paper form, for personal, backup, and archival use. Brief segments may be excerpted and used with attribution for descriptive purposes in commentaries, reviews, or other informational documents. All other reproduction in whole or in part is expressly prohibited without the consent of the copyright owner.

Copyright 2005 by WJ Communications, Inc.

## **1.9.6 Comments and feedback**

Comments and feedback on this manual or the stationary portal readers are welcomed:

By phone: 1-800-WJ1-4401 (951-4401) or (972) 644-2328 x13

By email: [RFID.info@wj.com](mailto:RFID.info@wj.com)

By physical mail: WJ Communications  
TNEX Products Division  
1909 N. Glenville Dr., Suite 200  
Richardson, TX 75081

## **1.10 Regulatory Compliance**

### **1.10.1 FCC Statement**

This equipment has been tested [PENDING AT THE TIME OF THIS WRITING!] and found to comply with the limits for a Class B digital device, pursuant to Part 15 of the FCC Rules. These limits are designed to provide reasonable protection against harmful interference in a residential installation. This equipment generates, uses and can radiate radio frequency energy and, if not installed and used in accordance with the instructions, may cause harmful interference to radio communications. However, there is no guarantee that interference will not occur in a particular installation. If this equipment does cause harmful interference to radio or television reception, which can be determined by turning the equipment off and on, the user is encouraged to try to correct the interference by one or more of the following measures:

- Reorient or relocate the receiving antenna.
- Increase the separation between the equipment and receiver.
- Connect the equipment into an outlet on a circuit different from that to which the receiver is connected.
- Consult the dealer or an experienced radio/TV technician for help.

NOTE: Changes or modifications not expressly approved by WJ Communications could void the user's authority to operate the equipment described in this manual.

#### **1.10.1.1 RF Radiation Exposure Statement**

These devices comply with FCC radiation exposure limits set forth for an uncontrolled environment, and users must follow specific operating instructions for satisfying RF exposure compliance.