

SP-130 Manual

1. Contents

- 1) Contents
- 2) Caution
- 3) Battery care
- 4) Connecting to computer
- 5) Guide to using camera
- 6) Installing software (windows'98se. me.2000)
- 7) Installing software (windows'XP)
- 8) Caution when using product
- 9) Specifications

2. Caution

- Before using product, read through manual and follow directions carefully.
- Warranty does not cover damage caused by user's carelessness of disassembling by force.
- Do not place on inclined or unstable object.
- To prevent damages to product, do not store camera in damp places.
- Do not disassemble, if damage occurs, warranty will not cover responsibility for the damage.
- Do not disassemble, or expose batteries to flames or excessive heat.
- The product has a built-in rechargeable battery
- When battery indicator is low, connect to computer for recharge.
- When camera is inoperative, use thin object to press reset button on bottom of camera.
- Before installing camera software, deactivate any anti-virus program.
- After installing camera software, if there is any problem contact to computer vendor.

3. Battery care

- Rechargeable battery.
- Data link to computer recharges battery
- Charging time: 2 hours
- If temperature is below 0° efficiency will decrease
- Battery time: constant use approximately 2 hours, power saving mode 7 days
- When not in use for 3 minutes, power saving mode automatically activates.

4. Connection to computer

- Connect USB Cable to computer port
- Use only cable provided when transferring information and recharging

5. Guide to using camera

- *How to use digital camera
- Shutter button: push to take picture.

- Mode: power On/Off & change mode
- Select: select mode & strobe mode
- USB Port: pc connection
- Short range photography: adjust lens
- Self-timer: Activate timer (10sec)

Camera + Best : SXGA Mode(1280x1024)

Camera + Normal : VGA Mode(640x480)

Camera + Low : CIF Mode(320x240)

AVI file: to start and stop recording, press shutter button

Self-timer function: 10sec

To delete a picture, select mode to trash

To delete all, select mode to trash all

When using flash, flash picture mode activated automatically

Flash activates automatically, when needed (automatic flash)

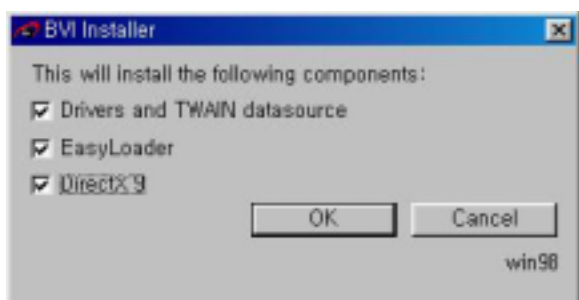
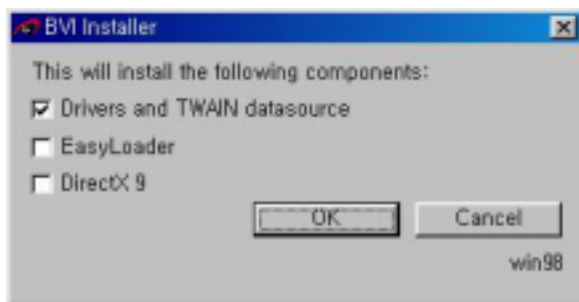
Deactivate flash

Computer connection mode

Close range photo mode (appears when lens is adjusted)

6). Camera Setup (Windows 98SE, ME, 2000)

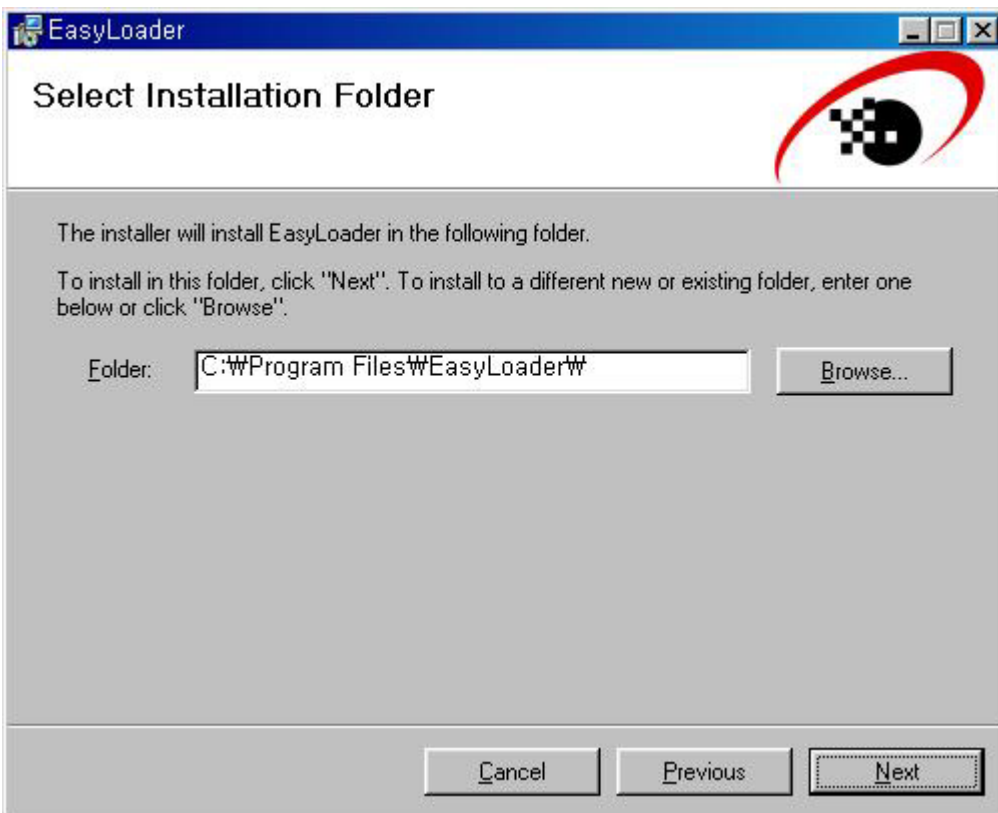
- 1) Insert CD into computer
- 2) When installation wizard starts, select everything and click "Ok"



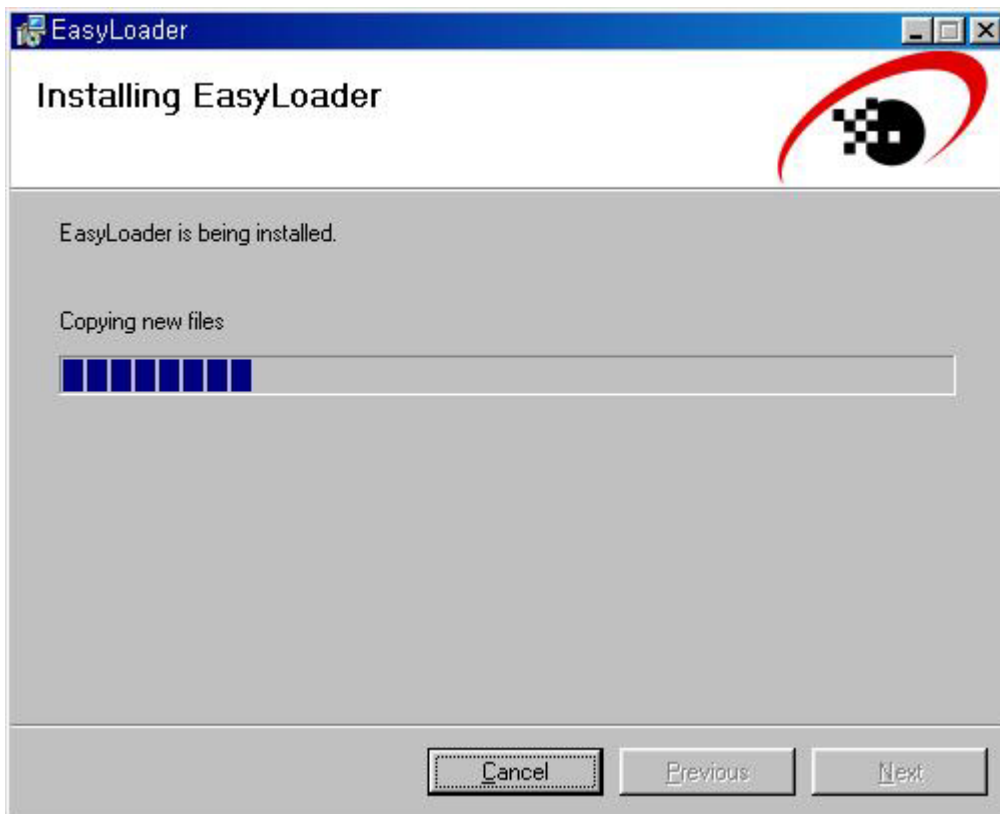
- 3) Click "Next"



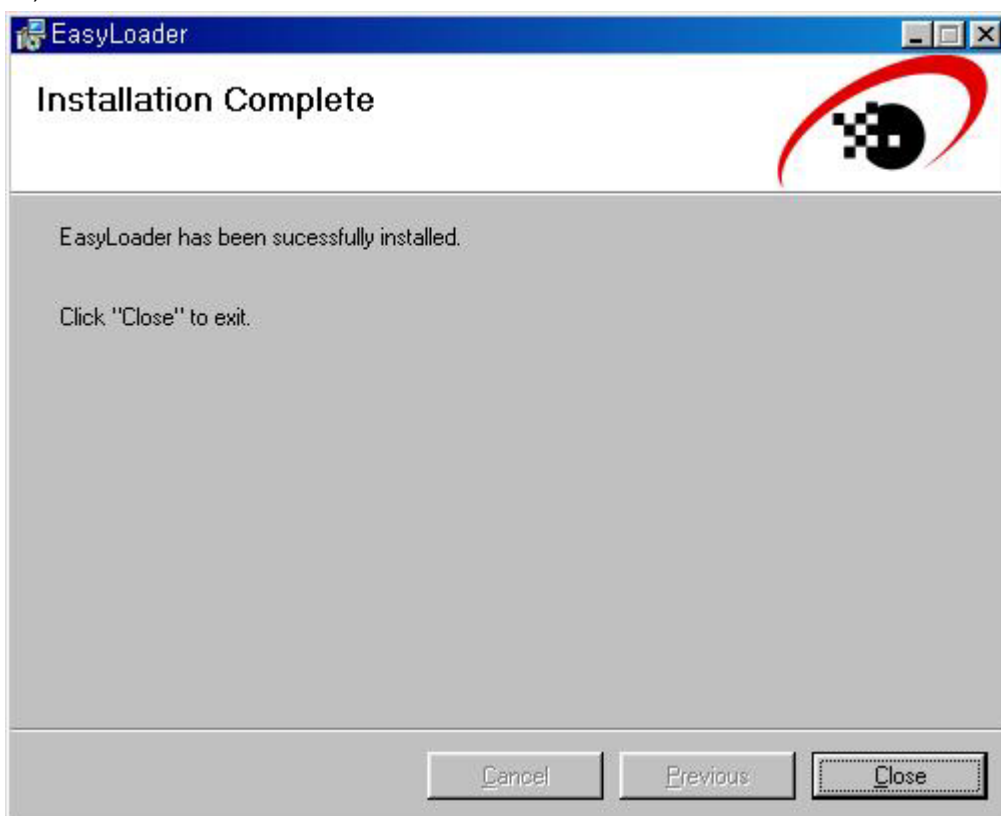
4) Click "Next"



5) Installation progress



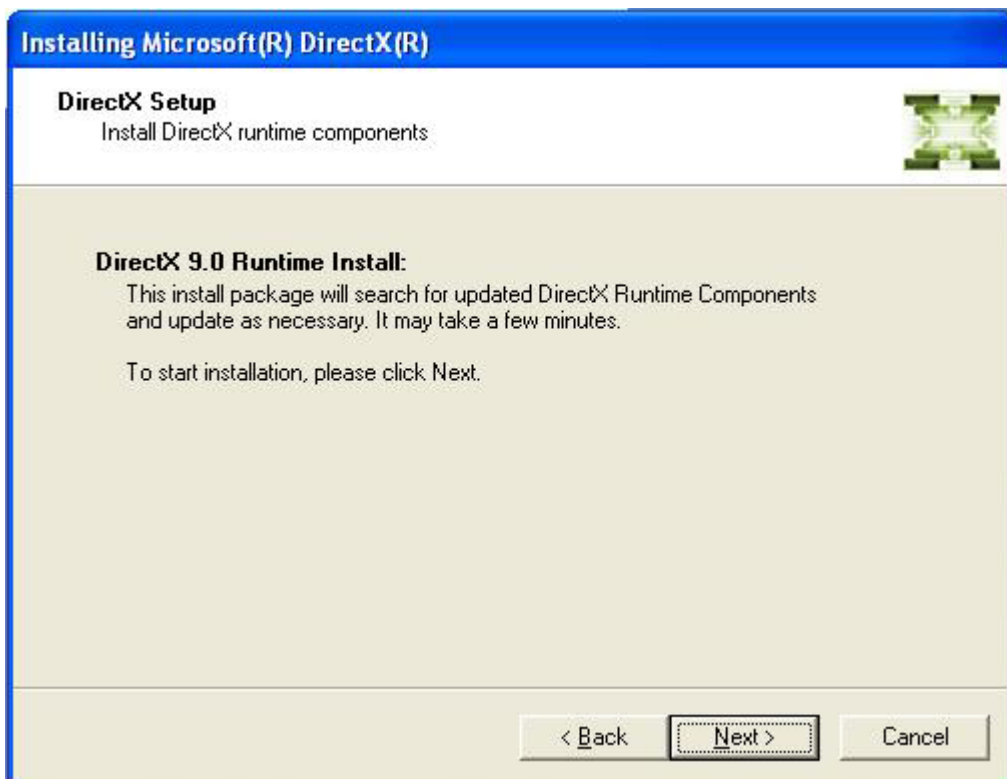
6) Click "Close"



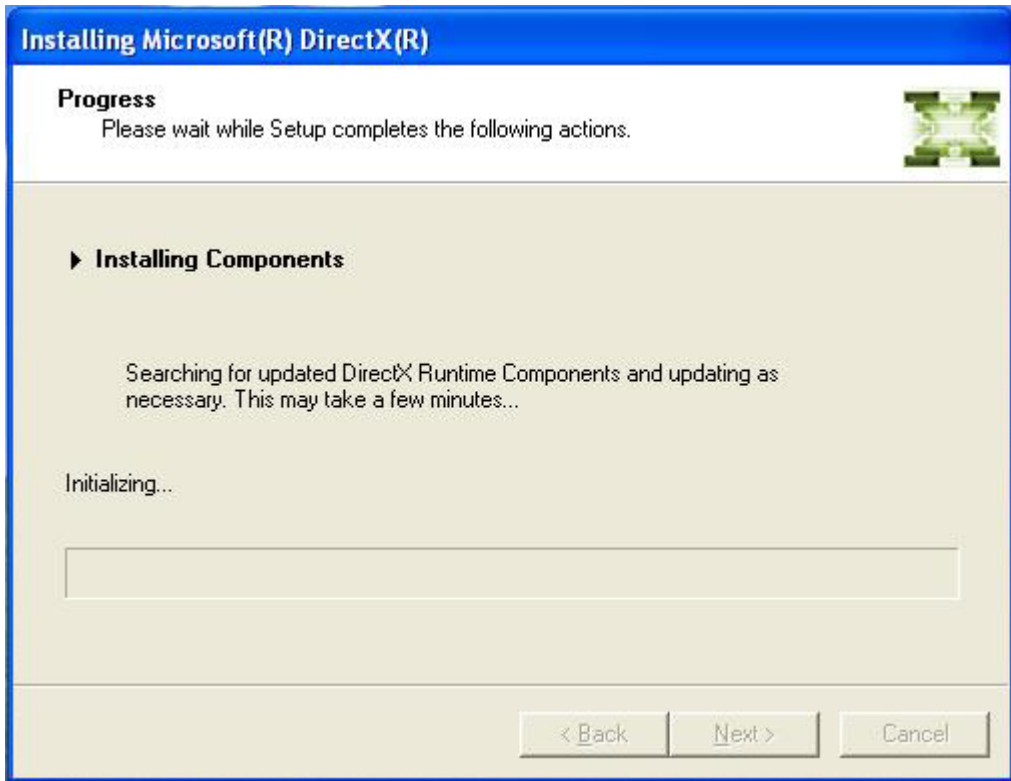
7) Click "I accept the agreement" and "Next"



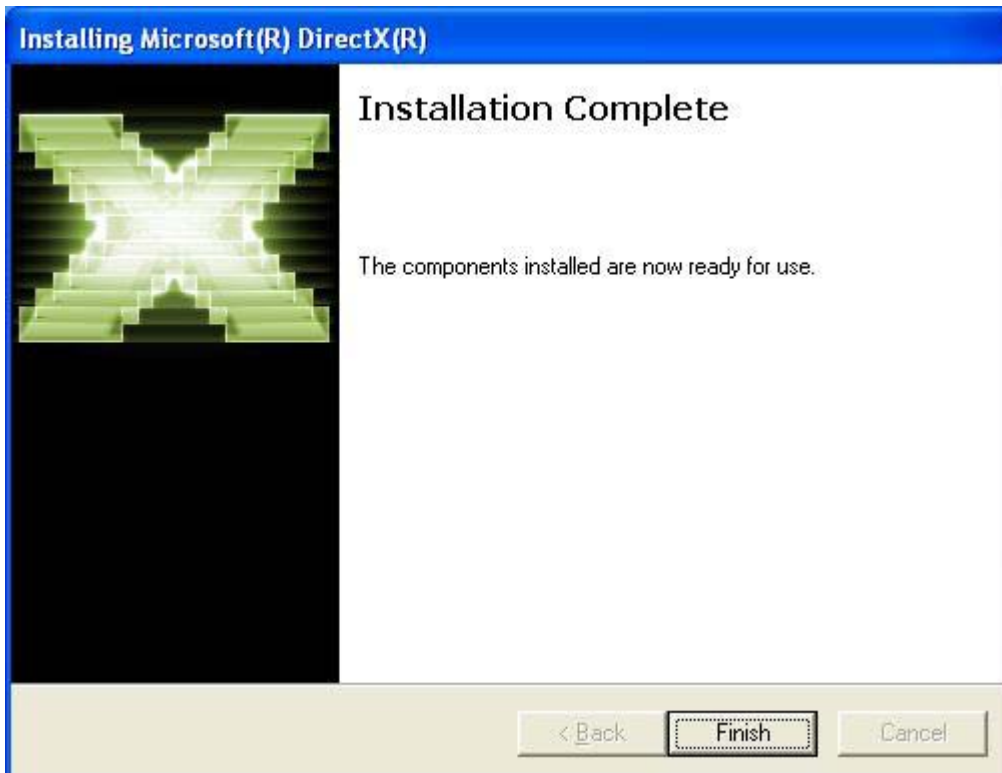
8) Click "Next"



9) Installation Progress

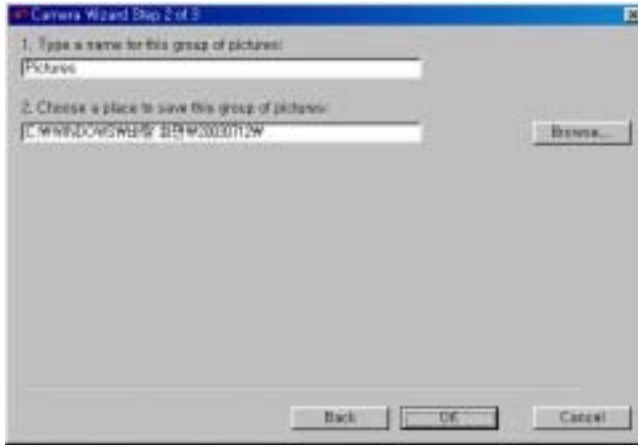


10) Click "Finish"

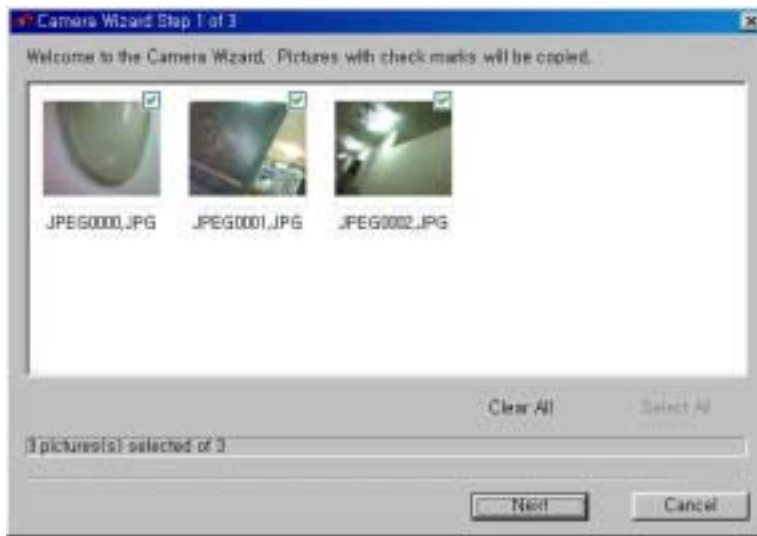


11) Reboot computer and connect camera to computer

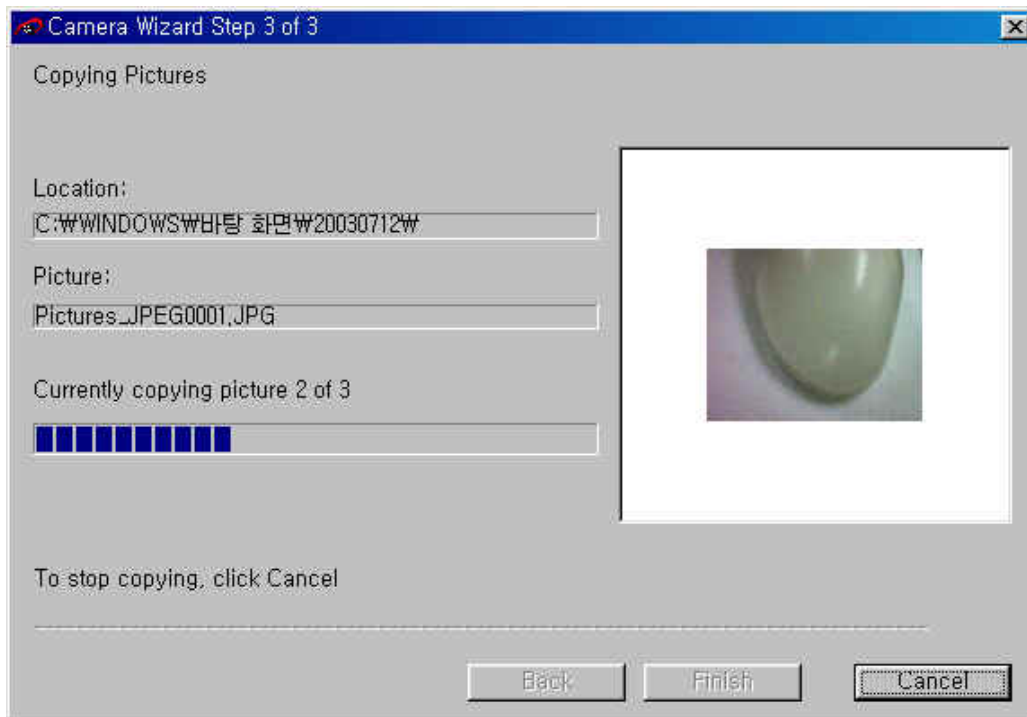
12) When wizard displays, click "Ok"



13) Choose the picture(s) you want to save and click "Next"

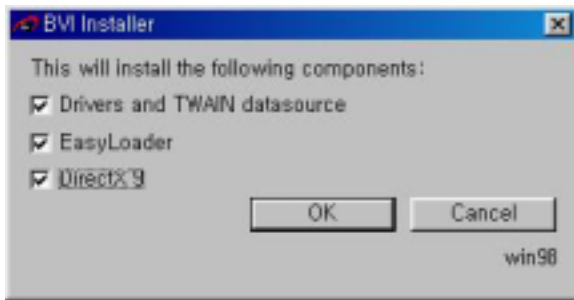
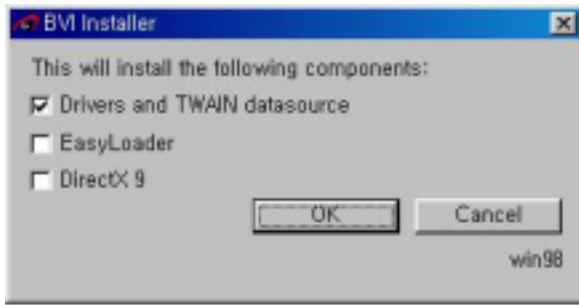


10) Save to folder



7. Camera Setup (Windows XP)

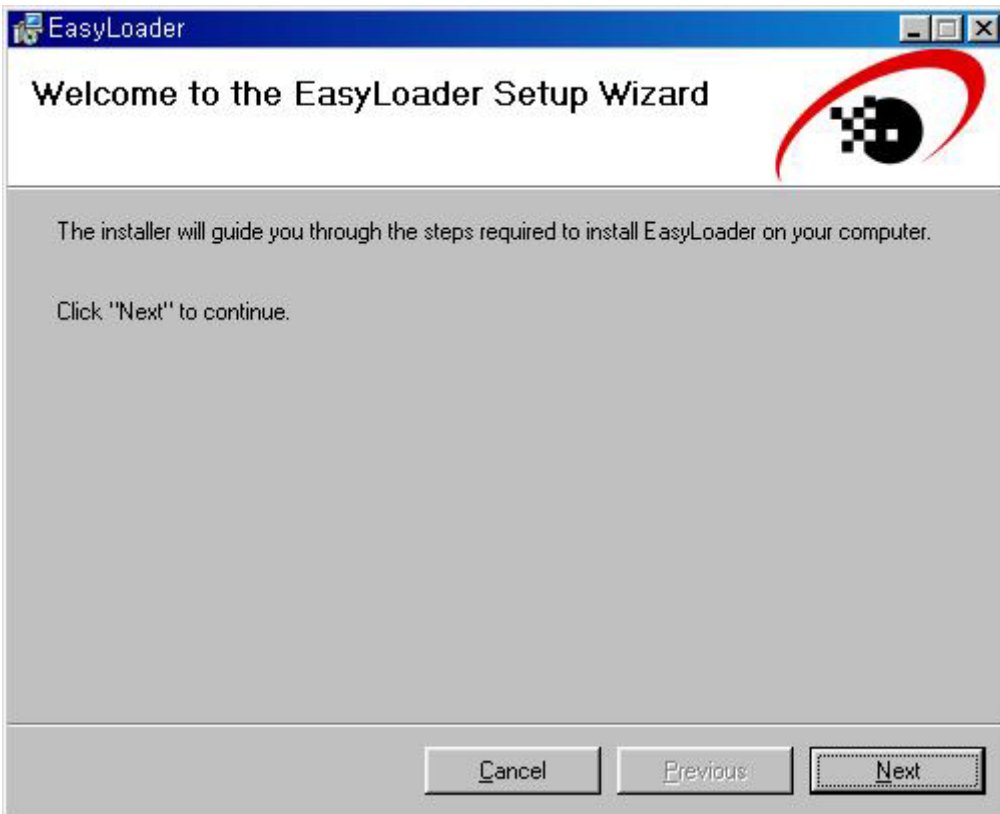
- 1) Insert CD into computer
- 2) When installation wizard starts, select everything and click "Ok"



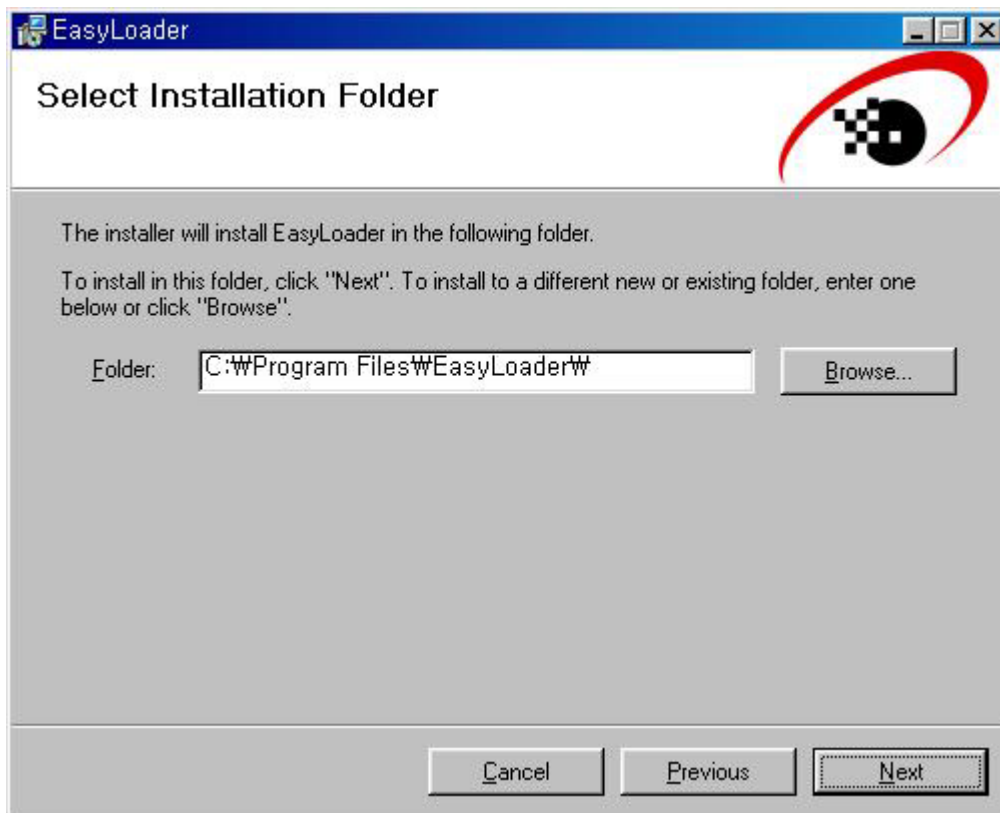
- 3) Click "Continue Anyway"



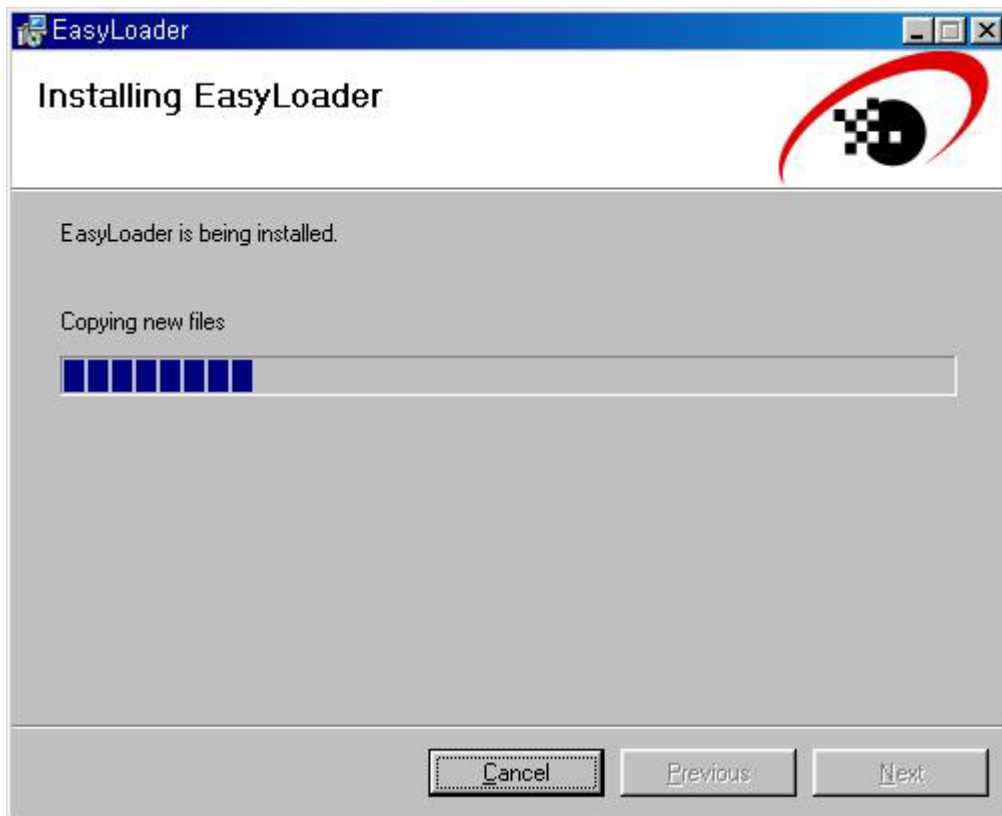
- 5) Click "Next"



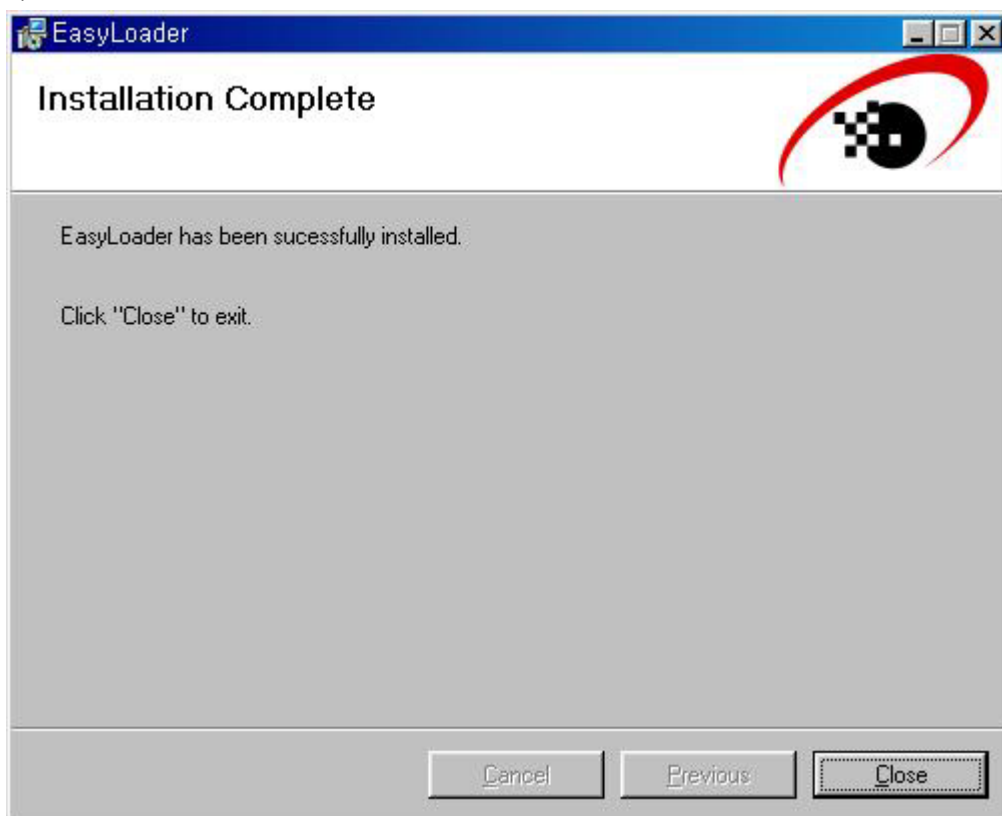
6) Click "Next"



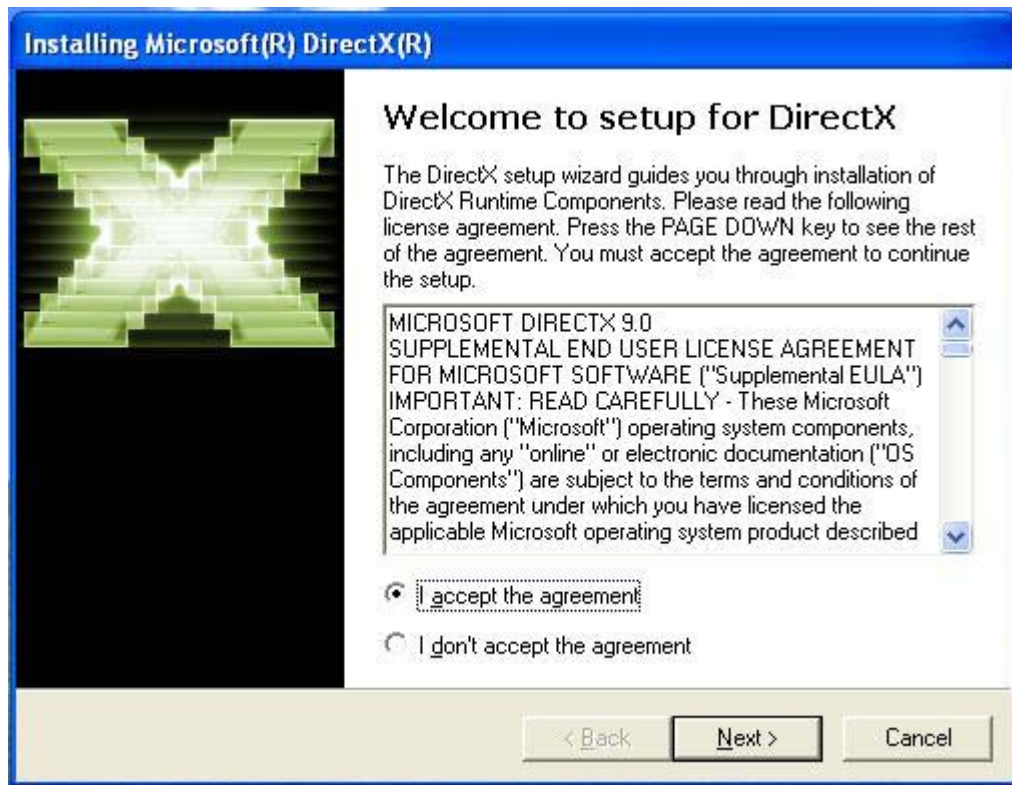
7) Installation progress



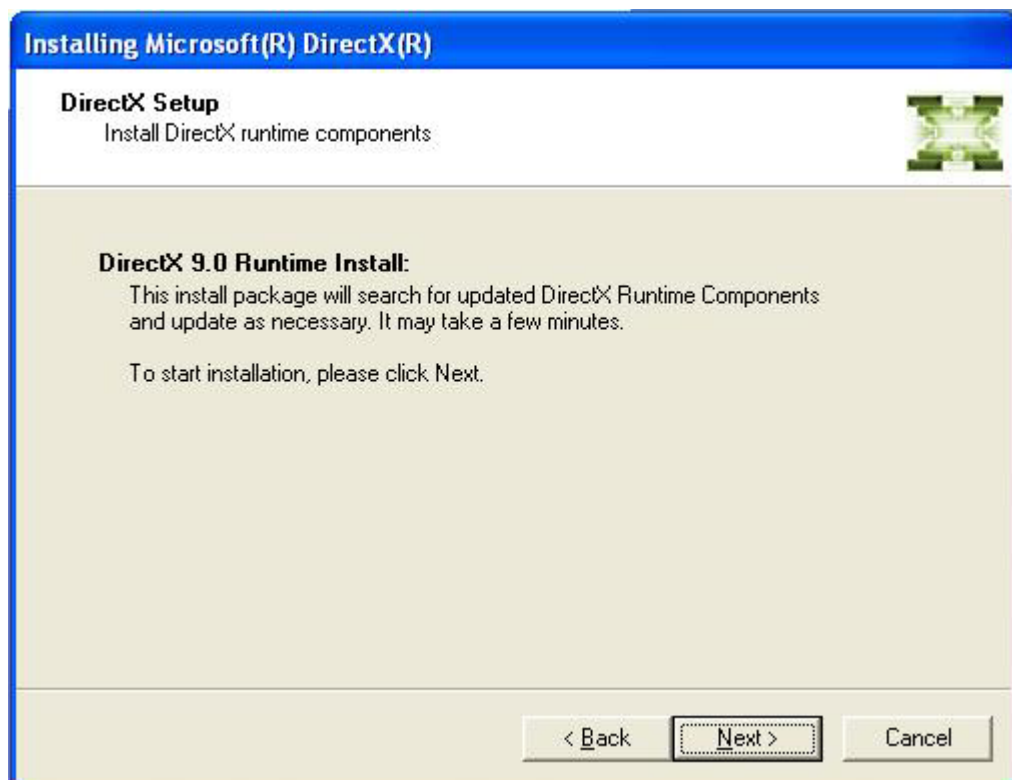
8) Click "Close"



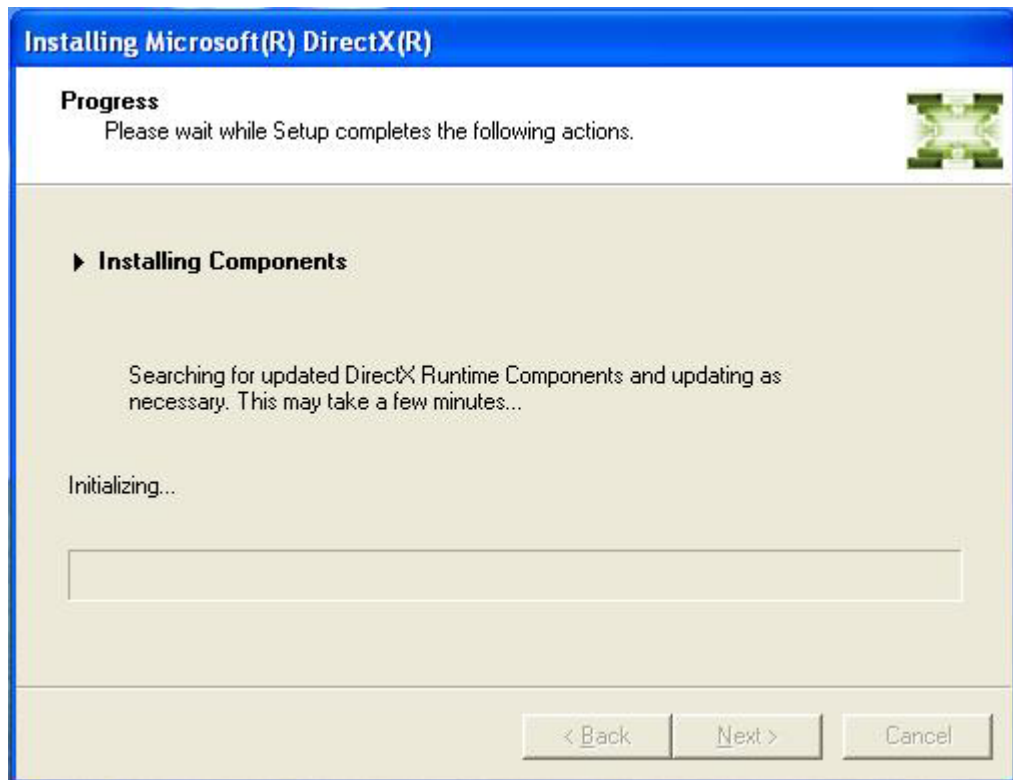
9) Click "I accept the agreement" and "Next"



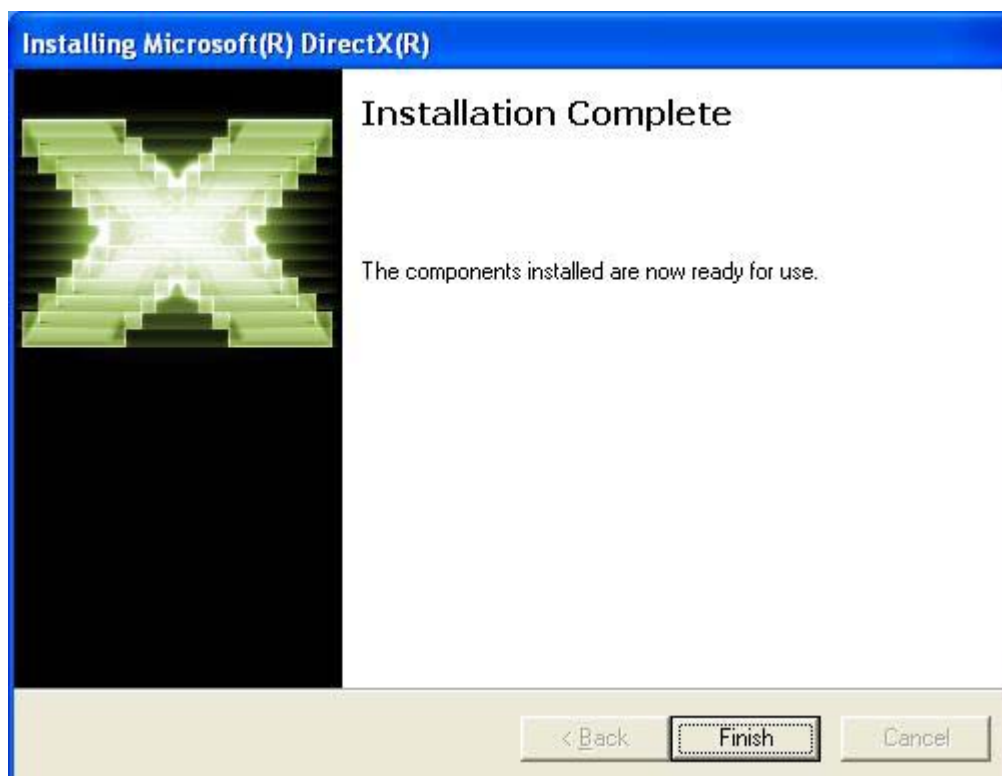
10) Click "Next"



11) Installation progress



12) Click "Finish"



13) Reboot computer and connect camera to computer

14) Click "Next"



15) Click "Continue Anyway"

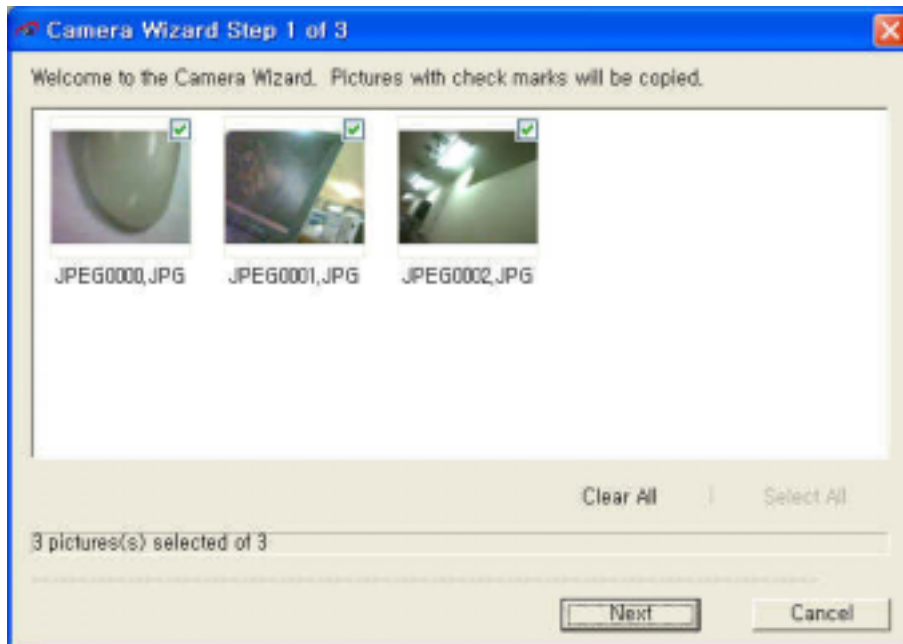


16) Click "Finish"

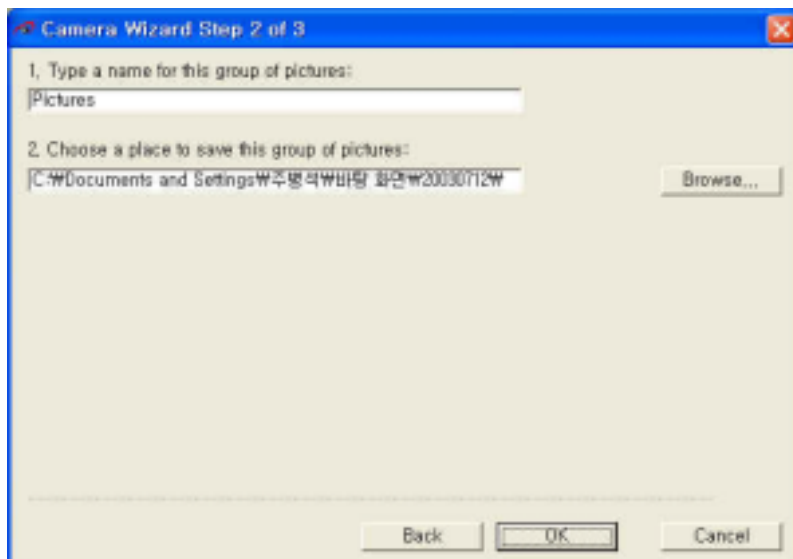


17) Reboot computer and connect camera to computer.

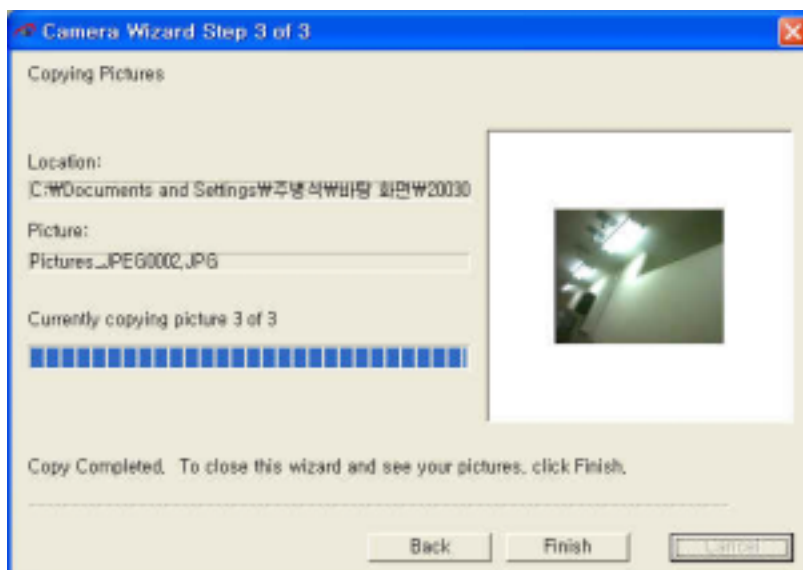
18) When wizard displays, click "Next"



19) Click "OK"



20) Click "Finish"
Save to folder



8. Caution when using product

- 1) Don't store in hot or humid area.
- 2) Don't expose to extreme light
- 3) Use soft cloth to clean lens and viewfinder.
- 4) Don't disassemble or modify
- 5) Use with care.

9. Specifications

Sp-130

- 1) Digital camera, USB PC camera, Video Clip.
- 2) CMOS Sensor
- 3) Image size 1280*1024(SXGA), 640*480(VGA), 320*240(CIF)
- 4) AVI file
 - 10~15fps(VGA)
 - 30fps(CIF)
- 5) Color: 24bit
- 6) Auto white balance
- 7) Image format
 - Jpeg file
- 8) Memory: flash memory 16MB
- 9) PC interface: USB Cable
- 10) Power: lithium-ion polymer rechargeable battery , USB Port
- 11) Camera status: LCD
- 12) Slim camera
- 13) Size (w*h*d) 85*56*10.8 cm
- 14) Weight: 55g

Sp-130 special feature

- 1) Auto focus
- 2) Auto power saving mode
- 3) Auto shutter
- 4) Self timer (10sec)
- 5) AVI file
- 6) Desktop, laptop combined use stand
- 7) Editing function
 - PC editing image
 - Video conferencing
 - TWAIM32 support
 - O/S: windows'98se/me/2000/xp
- 8) External phone camera
- 9) Slim and convenient

SP-130 contents

- 1) Strap
- 2) USB cable
- 3) CD (driver, software, manual, utility)
- 4) Desktop, laptop stand
- 5) Manual
- 6) Strobe Flash (option)

FCC NOTICE

This device complies with Part 15 of the FCC Rules. Operation is subject to the following two conditions:
(1) This Device may not cause harmful interference, and
(2) This device must accept any interference received, including interference that may cause undesired operation.

Caution: Changes or Modifications not expressly approved by the party responsible for compliance could void the users authority to operate the equipment.

This equipment has been tested and found to comply with the limits for a Class B digital device, pursuant to part 15 of the FCC Rules. These limits are designed to provide reasonable protection against harmful interference in a residential installation. This equipment generates, uses and can radiate radio frequency energy and, if not installed and used in accordance with the instructions, may cause harmful interference to radio communication. However, there is no guarantee that interference will not occur in a particular installation. If this equipment does cause harmful interference to radio or television reception, which can be determined by turning the equipment off and on, the user is encouraged to try to correct the interference by one or more of the following measures :

- Reorient or relocate the receiving antenna.
- Increase the separation between the equipment and receiver.
- Connect the equipment into an outlet on a circuit different from that to which the receiver is connected.
- Consult the dealer of an experienced radio/TV technician for help.

