

USING

PEN

MOUSE

TABLET

CUSTOMIZING

PEN

MOUSE

TABLET

POP-UP MENU

APPLICATION-SPECIFIC SETTINGS

TROUBLESHOOTING

intuos[®] 3



User's Manual for Windows[®] & Macintosh[®]

Wacom Intuos[®] 3 User's Manual for Windows[®] & Macintosh[®]

English version 1.0, April 03, 2004

Copyright © WACOM Company, Limited, 2004

All rights reserved. No part of this manual may be reproduced except for your express personal use. Wacom reserves the right to revise this publication without obligation to provide notification of such changes. Wacom does its best to provide current and accurate information in this manual. However, Wacom reserves the right to change any specifications and product configurations at its discretion, without prior notice and without obligation to include such changes in this manual.

Penabled, Tool ID, QuickPoint, and DuoSwitch are trademarks, and Intuos and Wacom are registered trademarks of WACOM Company, Limited.

Adobe, Acrobat, Reader, and Photoshop are either registered trademarks or trademarks of Adobe Systems Incorporated in the United States and/or other countries. Microsoft and Windows are either registered trademarks or trademarks of Microsoft Corporation in the United States and/or other countries. Apple, the Apple logo, and Macintosh are registered trademarks of Apple Computer, Inc., registered in the U.S. and other countries. Any additional company and product names mentioned in this documentation may be trademarked and/or registered as trademarks. Mention of third-party products is for information purposes only and constitutes neither an endorsement nor a recommendation. Wacom assumes no responsibility with regard to the performance or use of these products.



Watch for the Penabled logo to ensure you are getting the natural feel and superior performance of Wacom's patented cordless and battery-free pen technology.

CONTENTS

| | | | |
|---|----|---|----|
| About the manual | 5 | Customizing the Mouse | 36 |
| Navigating the manual | 6 | Customizing Mouse buttons | 36 |
| WORKING WITH INTUOS3 | 7 | Customizing the Mouse fingerwheel | 37 |
| Intuos3 tablet features | 8 | Tablet to screen mapping | 38 |
| Intuos3 input tools | 9 | Pen mode | 38 |
| Intuos3 optional tools | 10 | Mouse mode | 39 |
| Setting up your work area | 11 | Orientation | 39 |
| Using the Grip Pen | 12 | Screen area | 40 |
| Holding the Pen | 12 | Force proportions | 41 |
| Pointing | 13 | Tablet area | 42 |
| Clicking | 14 | Mapping to multiple monitors | 43 |
| Dragging | 14 | Customizing the tablet functions | 44 |
| Using the side switch | 15 | Customizing Tablet Keys | 45 |
| Drawing with pressure-sensitivity | 16 | Customizing tablet Touch Strips | 46 |
| Drawing with tilt | 16 | Advanced Touch Strip settings | 49 |
| Erasing | 17 | Customizing the Pop-up Menu | 50 |
| Eye-hand coordination exercise | 18 | Working with multiple tools | 51 |
| Using the Mouse | 19 | Working with application-specific settings | 52 |
| Using the Airbrush | 20 | Creating an application-specific setting | 53 |
| Working with the tablet | 21 | Changing settings for a specific tool and application | 54 |
| Using the Tablet Keys | 22 | Removing application-specific settings | 54 |
| Using the Touch Strips | 23 | TROUBLESHOOTING | 55 |
| CUSTOMIZING | 24 | Testing your tablet | 56 |
| Opening the control panel | 24 | Testing your tools | 57 |
| Control panel overview | 25 | Testing the Tablet Keys | 58 |
| Control panel settings | 26 | Testing the tablet Touch Strips | 58 |
| Customizing the Pen | 27 | Testing a Pen | 59 |
| Adjusting tip feel and double-click | 28 | Testing a Mouse | 60 |
| Adjusting eraser feel | 29 | Troubleshooting tables | 61 |
| Advanced tip and eraser pressure settings | 30 | General problems | 61 |
| Customizing tool buttons | 31 | Windows-specific problems | 64 |
| Button functions | 32 | Macintosh-specific problems | 65 |
| Customizing tilt sensitivity | 35 | | |



| | | | |
|--|----|--|----|
| Technical support options | 67 | Radio and television interference | 77 |
| Obtaining driver downloads | 68 | FCC notice | 77 |
| APPENDICES | 69 | CE declaration | 77 |
| Caring for your tablet and tools | 69 | License and Warranties | |
| Replacing the Pen tip | 70 | (Worldwide, Except for Europe, Africa and Middle East) | 78 |
| Uninstalling the software | 70 | Software License | 78 |
| Changing the tablet mode | 71 | Limited Warranty (Worldwide, Except Europe, Africa and Middle East) | 78 |
| Installing multiple tablets | 71 | Warranty Service in the U.S. and Canada | 80 |
| Product specifications | 72 | Warranty on Sales Outside of U.S. and Canada (Except Europe, Africa and Middle East) | 80 |
| General specifications for all Intuos3 tablets | 72 | License and Warranty | |
| Intuos3 4x5/A6 tablet (model PTZ-430) | 72 | (Europe, Africa and Middle East) | 81 |
| Intuos3 6x8/A5 tablet (model PTZ-630) | 72 | Software License Agreement | 81 |
| Intuos3 9x12/A4-regular tablet (model PTZ-930) | 72 | Entitlement to Use the Software | 81 |
| Intuos3 Grip Pen (model ZP-501E) | 73 | Limited Warranty | 81 |
| Intuos3 Mouse (model ZC-100) | 73 | GLOSSARY | 83 |
| Intuos3 Airbrush (model ZP-400E) | 73 | INDEX | 85 |
| Intuos3 Ink Pen (model ZP-130) | 73 | | |
| Product information | 74 | | |
| Ordering parts and accessories | 74 | | |
| Tablets | 75 | | |
| Tools | 75 | | |
| Other parts and accessories | 76 | | |

About the manual

This combined interactive User's Manual for Windows and Macintosh provides quick access to information about Intuos3. Just click on a navigation button or highlighted word to move through the document. The information is common to both platforms and Windows screen captures are shown, unless otherwise noted.

- In the [contents](#) you can go directly to a topic by clicking on it.
- [Working with Intuos3](#) is the learning chapter, and introduces you to the many capabilities of your Intuos3 tablet. It describes the various tablet models, the features and functions of each Intuos3 tool, and includes exercises for new users.
- [Customizing](#) describes how you can change the control panel settings to optimize your Intuos3 tablet and tools for the way you like to work.
- Want to test your tablet and tools? Need troubleshooting guidelines? [Troubleshooting](#) is where you will find the answers to most common questions.
- The [appendices](#) include a variety of information: tips on caring for your tablet and tools, a how-to on uninstalling the software, your license and warranty, and more. If you are using more than one tablet on your computer, you will find instructions on adding and working with multiple tablets.

Note: This manual does not contain information on installing your tablet. Please refer to your product Quick Start Guide and to the automated software installer (located on the Wacom Tablet CD) for details on installing your Wacom tablet.

If you are new to electronic documentation, be sure to read [navigating the manual](#).

Here are some other points to keep in mind:

- The tablet size descriptions shown within this manual reflect usage for both the USA and European markets, and are separated by a "/". For example, in the descriptor "4x5/A6", "4x5" is the tablet sizing descriptor for markets in the USA. "A6" is the descriptor for European markets. Within this manual, USA tablet size descriptors are always shown before the "/".
- SMALL CAPITAL LETTERS are used to identify the names of keyboard keys, dialog boxes, and control panel options.
- Remember that you can always use the Adobe Reader zoom-in tool to increase the size of the manual on your display screen.
- The following kinds of information are not included with this product: information about your specific computer hardware or operating system, or information about your application software. Your best source for this information is the set of manuals and disks that came with your hardware, operating system, or application.
- Many graphics applications have built-in support for Intuos3 features (such as pressure-sensitivity, tilt, airbrush simulation, and fingerwheel input for the Intuos3 Mouse). You can find a listing of applications that support these features at Wacom's web site (see [product information](#)). For information on how best to use Intuos3 features within a specific application, refer to the instructions in that application's manuals.

Navigating the manual

Use the navigation controls to move through the manual:



Go to front page.

[CONTENTS](#)

Go to table of contents.

[INDEX](#)

Go to index.



Go back to previous view.



Page back, or page forward.

[HEADING TEXT](#)

Go to beginning of section.

[topic](#)

Go to topic.



Topic continued.

Adobe Reader provides you with additional tools for using and printing the manual. Refer to the Adobe Reader help for more information.

WORKING WITH INTUOS3

This section introduces you to the Intuos3 professional pen tablet. Intuos3 consists of a tablet that serves as your work area and the [Intuos3 input tools](#) you use on the tablet. The quickest way to learn about Intuos3 is to become familiar with its appearance and features. If you are new to using a pen tablet, read the following sections to learn about your Intuos3 tools and how to use them with the tablet.

Note: Intuos3 tools will only work on an Intuos3 tablet. They will not work on an Intuos or Intuos2 series tablet. Likewise, older Intuos or Intuos2 input tools will not work on your Intuos3 tablet.

[Intuos3 tablet features](#)

[Intuos3 input tools](#)

[Setting up your work area](#)

[Using the Grip Pen](#)

[Using the Mouse](#)

[Using the Airbrush](#)

[Working with the tablet](#)

Intuos3 tablet features



Pen stand

Cable
Recessed cable tracks on the back of the tablet allow the cable to exit the top or left of the tablet.

Status LED

Customizable
Tablet Keys

Touch Strip controls

Note: 4x5/A6 tablet models come equipped with Tablet Keys and a single Touch Strip located to the left of the tablet's active area.



Tablet work surface
Identifies the tablet active area.

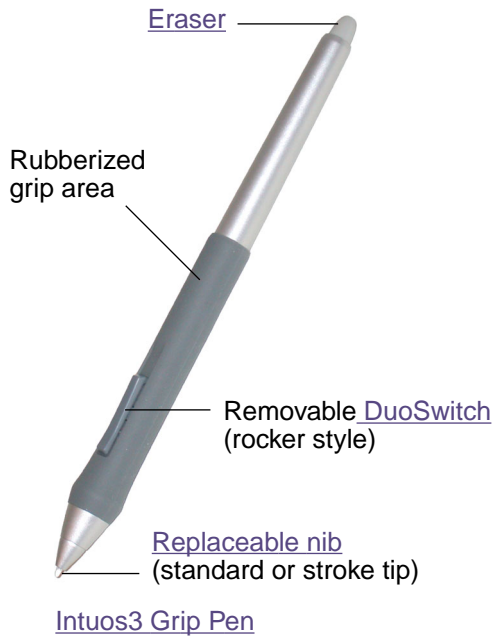
Note: Intuos3 6x8/A5 tablet shown. To learn more about your tablet, see [working with the tablet](#). For a complete listing of Intuos3 tablets, see [ordering parts and accessories](#).

Intuos3 input tools

Various input tools are available for your tablet. All Intuos3 tools are cordless, batteryless, and ergonomically designed. Each tool also features a unique [Tool ID](#), which enables you to work with multiple tools and to customize each tool differently.

The Intuos3 Grip Pen is a pressure-sensitive freehand tool for image editing and creating natural-looking pen and brush strokes.

If you prefer to use a mouse for general navigation, pointing, and clicking, just set aside your Intuos3 Pen and place the Intuos3 Mouse on the tablet – the mouse is cordless and symmetrically designed so you can use it just as easily in your left or right hand.



[Fingerwheel](#). An integrated middle button and rolling wheel that can be used for up and down scrolling in the active window. It can also be customized to perform a variety of button functions.

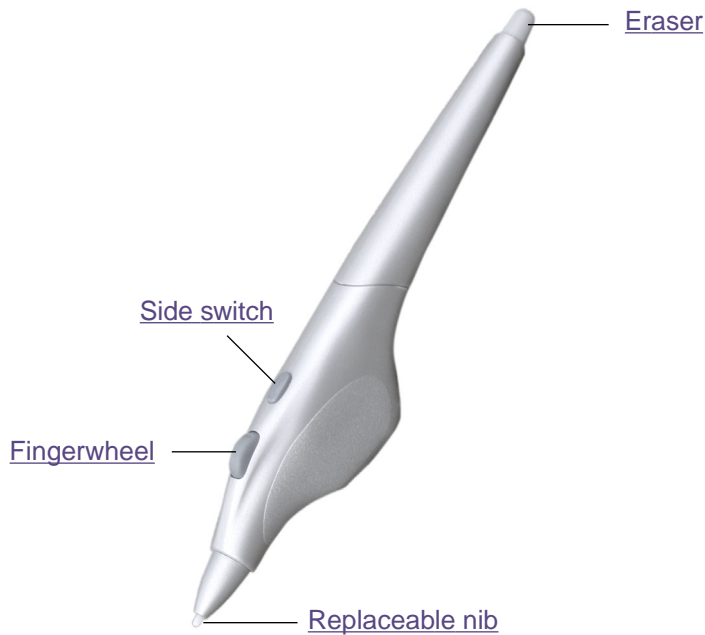


[Programmable buttons](#) can be customized for the way you like to work.

Note: Some product configurations may not include the Intuos3 Mouse.

Intuos3 optional tools

Like the Intuos3 Grip Pen, the optional Airbrush is a pressure-sensitive freehand tool for image editing and creating natural-looking pen and brush strokes.



[Intuos3 Airbrush](#) (optional accessory)



Intuos3 Ink Pen (optional accessory)

The Ink Pen is pressure-sensitive and comes with replaceable inking cartridges. With the Ink Pen you can write or draw as you do with a regular pen – just place a sheet of paper on your tablet and everything you write will be captured on paper and on your computer.

For information on these and other available Intuos3 tablets, tools, or parts and accessories, see [ordering parts and accessories](#). Visit Wacom's web site for a list of applications supporting the Ink Pen and Airbrush features. See [product information](#).

Setting up your work area

To minimize fatigue, organize your work area so you can work comfortably. Position your tablet, input tools, and keyboard so they are easily accessible without unnecessary reaching. Your monitor should be positioned so you can view it comfortably with a minimum of eyestrain. For best results, orient the tablet so the screen cursor follows the same direction as your hand movements on the tablet.



Here are some other points to keep in mind:

- Take short breaks between tasks to stretch and relax your muscles.
- Use a gentle grip when working with your tools.
- Alternate tasks and tools throughout the day.
- Maintain a good posture at all times. Minimize awkward postures and repetitive movements that cause discomfort.
- Change your position if you feel any discomfort due to your work position.

Note: Wacom makes no representation, promise or guarantee that Wacom products will cure or prevent, in whole or in part, mouse-induced repetitive stress symptoms, injuries or conditions. Individual results may vary. Always obtain competent medical advice to determine the most appropriate treatment for your specific situation.

See [working with the tablet](#) for additional information.

Using the Grip Pen

The Intuos3 Grip Pen is cordless, batteryless, and pressure sensitive. There are four basic techniques for using the pen: pointing, clicking, double-clicking, and dragging. With a bit of practice, using the pen will become second nature to you. If you are unfamiliar with using the pen, try the exercises on the following pages.

[Holding the Pen](#)

[Pointing](#)

[Clicking](#)

[Dragging](#)

[Using the side switch](#)

[Drawing with pressure-sensitivity](#)

[Drawing with tilt](#)

[Erasing](#)

[Eye-hand coordination exercise](#)

Holding the Pen

Hold the Intuos3 Pen like you would a normal pen or pencil. Make sure the DuoSwitch is in a convenient location where you can toggle it with your thumb or forefinger, but not accidentally press the switch while drawing. You can tilt the pen in any way that feels most comfortable for drawing.



Position for drawing



Position for erasing

Your tablet comes with a free-standing pen stand that is used to hold your pen when it is not in use. Position the pen stand within easy reach of your tablet. When you are between tasks, store the pen either horizontally or vertically in the pen stand; this makes the pen available for quick, easy access when you are working.

Important: When the Intuos3 Pen is not in use, place it in the pen stand or lay it flat on your desk. To maintain the sensitivity of your pen tip, do not store the pen in a container where it will rest on its tip. Leaving an Intuos3 tool on the tablet may interfere with screen cursor positioning when using other pointing devices.



Pointing

The Intuos3 Pen positions the pointer (or cursor) on your screen. You can position the screen cursor two different ways, like a pen ([PEN mode](#)) or like a mouse ([MOUSE mode](#)).

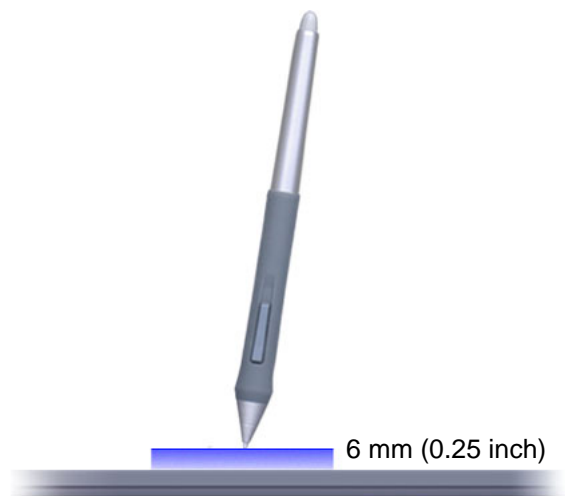
- In PEN mode, the tablet's active area is a mapped representation of your computer screen where every point on the active area corresponds to exactly one point on the display screen; wherever you place the pen on the tablet, the screen cursor will jump to the corresponding point on the screen. This is the default setting for the pen.
- In MOUSE mode, the default setting for the Intuos3 Mouse, you move the cursor with a "pick up and slide" action similar to using a traditional mouse.



Try moving the screen cursor by lifting the pen and placing the pen tip in a new location on the tablet. The cursor instantly jumps to the new location.

When positioning the screen cursor and operating the side switch, the pen tip needs to be within 6 mm (0.25 inch) of the tablet surface. You do not need to touch the tablet with the pen tip in order to move the screen cursor or use the side switch.

All Intuos3 tools, including the mouse, work only over the active area of the tablet.



Hints:

- If you are used to working with a mouse and find that using a pen is somewhat difficult, try the [eye-hand coordination exercise](#).
- Pointing is easier when you orient the tablet so the screen cursor follows the same direction as your hand movements on the tablet.

Clicking

You typically click to highlight or select something on the screen, and double-click to open it.

Clicking. To click, tap the pen tip once on the tablet, or press the pen tip on the tablet with enough force to register a click. (There is no audible pen tip “click” sound.) Try clicking on a folder icon by moving the screen cursor over the icon and pressing down on the pen tip. The folder should highlight when you press.

Double Clicking. To double-click, quickly tap the tablet twice in the same place with the pen tip. This is like clicking twice with a mouse button. Try double-clicking on a folder icon to open it.

Hints:

- Press the upper side switch to double-click in Windows, or the lower switch to double-click on Macintosh systems. This is easier than tapping twice with the pen tip, and is the preferred method of double-clicking with a pen.
- **Windows:** You can make navigating with the pen easier by configuring Windows to select when the pen is over an icon and to launch the icon with a single click. To turn on this feature:
 Windows Me, 2000, or XP: Open a folder, select the TOOLS pull-down menu, and FOLDER OPTIONS.... From the GENERAL tab select the option SINGLE-CLICK TO OPEN AN ITEM (POINT TO SELECT).
 Windows 98: Open a folder, select the VIEW pull-down menu, and FOLDER OPTIONS.... From the GENERAL tab select the WEB STYLE option.



Dragging

Dragging is used to select and move objects on the screen. To drag, first point to an object. Then press the pen tip to the tablet and slide it across the tablet surface. The selected object will move across the screen. To select text, move the screen cursor to the beginning of a text line, then drag the pen across the tablet until the text is highlighted.

First, try moving an icon on the screen. Then, within a document, select some text by pressing and dragging the pen tip across the text.



Using the side switch

The Intuos3 Grip Pen is equipped with a DuoSwitch. This switch has two programmable functions that can be selected by rocking the switch in either direction. You can use the DuoSwitch whenever the pen tip is within 6 mm (0.25 inch) of the tablet's active area. You do not have to touch the pen tip to the tablet in order to use the switch.

Windows: The upper switch position is set to DOUBLE-CLICK, and the lower switch is set to RIGHT-CLICK by default.



Macintosh OS X: The upper switch is set to INK TOGGLE, and the lower switch is set to DOUBLE-CLICK by default.

Hint: Press the upper side switch to double-click in Windows, or the lower side switch to double-click on Macintosh systems. This is easier than tapping twice with the pen tip.

Note: The DuoSwitch on the Grip Pen can be removed if you do not need the switch functionality. See [other parts and accessories](#) for information on ordering an alternate pen grip for use with the side switch removed.

To assign new switch functions, see [customizing tool buttons](#).

Drawing with pressure-sensitivity

The Intuos3 Pen responds to the nuance and inflection of your hand movements, enabling you to create natural-looking pen and brush strokes. Many graphics applications have drawing tools that respond to the pressure you place on the pen. For example, in some drawing programs sliders are used to vary brush characteristics (width, color, and opacity). These characteristics can be controlled much better by the pen's pressure-sensitivity – you can vary line width, blend colors, and change opacity with the pressure you exert upon the pen.

To draw with pressure-sensitivity, first select a pressure-sensitive tool from your application's tool palette. Then draw along the surface of the tablet while applying various amounts of pressure downward on the tip of the pen. Press hard for thick lines or dense color. Press gently for thin lines or softer color. To adjust the tip feel, see [adjusting tip feel and double-click](#).

Visit our web site for a list of graphics applications that support pressure. See [product information](#).



Drawing with tilt

As with pressure-sensitivity, the tablet recognizes when you tilt the pen from vertical to inclined positions. In some drawing applications, tilt can be used to control line shape and thickness. This is like working with an airbrush where tilt can be used to make a line thin when the tool is vertical, or wide when the tool is tilted. In other applications, you can adjust tilt to define brush characteristics such as width, color and opacity.

To test tilt, draw a curve in a graphics application (such as Painter) that supports tilt. Be sure that the tilt function in your application is active, then change the tilt of the pen as you draw to vary the shape and thickness of the brush stroke.

As an example, when the brush shape dynamics in Photoshop have been configured for tilt operation, tilting the pen results in an elongated pattern. This simulates the effects of an airbrush spray that is angled away from the paint surface.



To adjust the amount of pen tilt required to produce a desired tilt effect in your application, see [customizing tilt sensitivity](#). Visit our web site for a list of applications that support tilt. See [product information](#).

Erasing

The eraser on the Intuos3 Pen works like the eraser on a pencil. In graphics applications that support the pen's eraser, you can erase intuitively and naturally. When you use the pen's eraser, the application will automatically switch to the eraser tool. In applications that support pressure-sensitivity, you can select pressure-sensitive tools in an application's tool palette to vary the width and depth of your erasures as you change the amount of pressure you exert upon the pen.

You can also use the eraser in many standard office applications. The eraser will not be pressure sensitive in these applications, but you can use it to select and delete text or spreadsheet cells.



Try your eraser by opening Notepad (Windows) or TextEdit (Macintosh) and typing a few words. Use the eraser to select the text. When you lift the eraser, the text will be deleted. For further information on using your eraser, see [adjusting eraser feel](#).

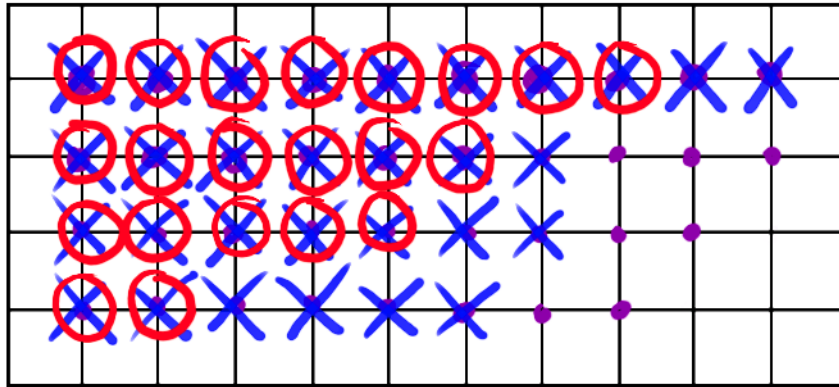
Visit our web site for a list of graphics applications that support the eraser (see [product information](#)). If the eraser is not supported in an application, you can still use the eraser for navigating and drawing.

Eye-hand coordination exercise

If you use a mouse, you may remember how long it took to get used to positioning the screen cursor. Your Intuos3 Grip Pen, likewise, will take a bit of practice to master the technique of positioning the screen cursor in [PEN mode](#). This may seem difficult at first, but it is more natural and faster than in [MOUSE mode](#).

This exercise is designed to retrain your eye-hand coordination for using the pen:

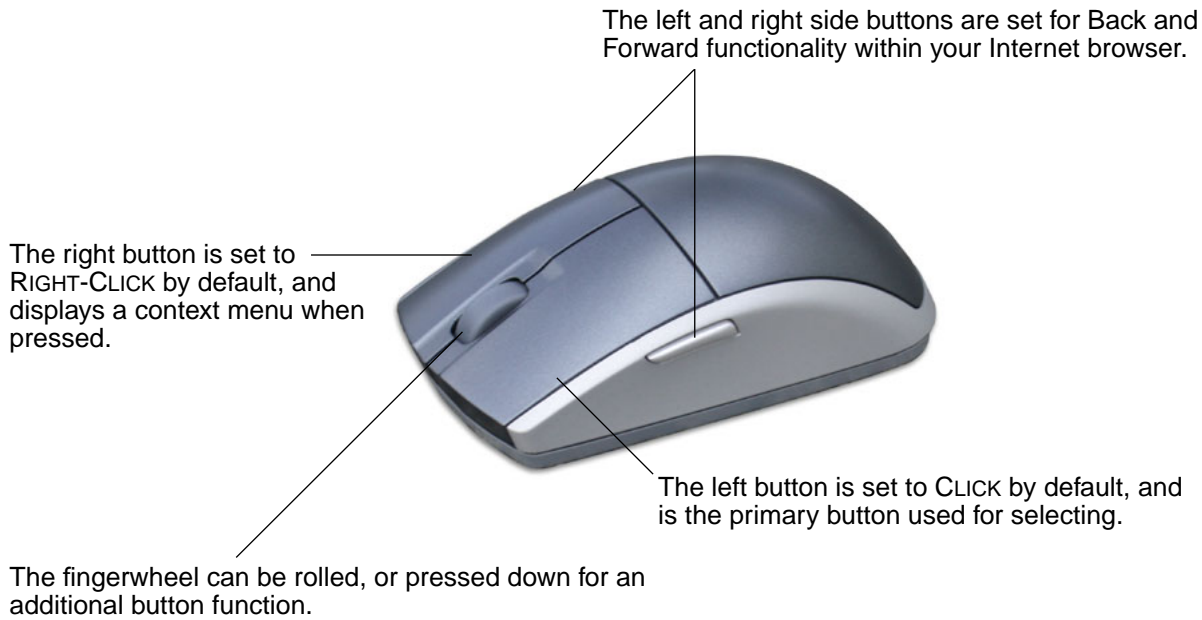
1. Open any graphics application. Use the line tool to draw a rectangular grid with line spacings of about 20-25 mm (3/4 to 1 inch). You can use your traditional mouse to do this.
2. Choose a free-hand tool in your application and use the pen to draw a dot at each grid intersection.
3. Draw an X at each grid intersection.
4. Now draw a circle around each intersection. Your screen should look like this:



5. Clear your screen and make a simple drawing of your own. The more you use your Intuos3 Pen, the easier drawing and navigation will become.

Using the Mouse

The Intuos3 Mouse is a cordless, batteryless, maintenance-free mouse that works on any Intuos3 tablet.



- **Rolling.** By default, rolling the fingerwheel will scroll in most windows and applications. Move the fingerwheel forward to scroll up, and back to scroll down. You can also set the fingerwheel to issue a custom keystroke for each notch of wheel movement. This is useful when working with repetitive functions, such as zooming in Photoshop or moving forward and backward within your Internet browser.
- **Wheel button.** Press down on the wheel to perform a button click. The wheel button is set to middle-click by default.

Hint: For MS Office applications that support a wheel mouse, press the CTRL key and move the fingerwheel to zoom in and out.

Note: Some product configurations may not include the Intuos3 Mouse.

Important: When the Intuos3 Mouse is not in use, place it on your desk. Leaving an Intuos3 tool on the tablet may interfere with screen cursor positioning when using other pointing devices, or may prevent your computer from going to sleep.

To learn how to adjust the mouse behavior for your preferences, see [customizing the mouse](#).

Using the Airbrush

The optional Intuos3 Airbrush works like the pen, but also includes a fingerwheel for an additional degree of control. With proper software support, you can simulate realistic airbrushing. For example, tilting the Airbrush can cause the spray pattern to elongate and feather out. Rolling the fingerwheel can adjust the spray intensity, and pressure on the tip can control the brush size.

All other functions work similarly to the pen. For additional information, see [using the Grip Pen](#).

Important: When the Airbrush is not in use, lay it flat on your desk. To maintain the sensitivity of your Airbrush tip, do not store the Airbrush in a container where it will rest on its tip. Leaving an Intuos3 tool on the tablet may interfere with screen cursor positioning when using other pointing devices.

Hold the Airbrush with your thumb and middle finger. The fingerwheel should be in a convenient location for you to roll it with your index finger. Tilt the Airbrush to find a comfortable position that allows you to paint and draw with pressure-sensitivity.

For Windows, the side switch is set for a RIGHT-CLICK by default. For Macintosh, the switch is set for DOUBLE-CLICK.

Roll the fingerwheel backwards to increase ink flow or brush size, and forward to reduce it.

Your index finger should operate the wheel independently of the pressure you apply to the tip.



Visit Wacom's web site to learn where to purchase an Intuos3 Airbrush, and which applications currently support the Airbrush fingerwheel. See [product information](#).

Working with the tablet

The middle area of the Intuos3 tablet is the working, or active, area for the pen and mouse. Rest your hand on the tablet and then work with the pen on the active area of the tablet just as if you were using a ball point pen on a piece of paper. See [using the Grip Pen](#) and [using the mouse](#) for more information about using your input devices on the tablet.

To speed up your workflow in graphics and other applications, all Intuos3 tablets feature Tablet Keys and Touch Strip(s) located next to the tablet's active area. While using the pen with your dominant hand on the active area, you can simultaneously use your other hand to operate the Tablet Keys or Touch Strip. For example, you can change the properties of your tool without removing your hands from the Intuos3 tablet. (Note that 4x5/A6 tablet models come with Tablet Keys and a single Touch Strip.)

Tablet Keys. Press the customizable Tablet Keys to perform frequently used functions or keystrokes. By default, the keys emulate keyboard modifier keys. In Photoshop, this provides quick access to the grabber hand and alternate tools.



Touch Strip. Slide your finger over the Touch Strips to zoom, scroll, or perform custom keystroke actions. By default, the Touch Strips enable you to zoom in most graphics applications and to scroll in other applications. You can also set them to issue custom keystrokes. For example, you might set a Touch Strip function to change brush sizes when working in Photoshop.

Using the Tablet Keys

Press the Tablet Keys with your secondary hand to toggle between tools or change tool properties while you are using your primary hand to work with your pen on the Intuos3 tablet. The default settings were chosen to optimize your workflow in Photoshop and other graphics applications, using the following modifier keys:

Button 1: CTRL modifier key for Windows. COMMAND (Apple key) for Macintosh.

Button 2: SHIFT modifier key.

Button 3: ALT modifier key for Windows. OPTION modifier key for Macintosh.

Button 4: SPACE key (spacebar).



6x8/A5 tablet shown.

The Tablet Keys are chordable. For example, pressing keys 3 and 1 together simulates ALT+CTRL in Windows, or OPTION+COMMAND on Macintosh systems.

Tips:

- In Photoshop, pressing the spacebar (key 4 on your Intuos3 tablet) switches the currently selected tool to the hand tool and lets you pan (move) the image within the application window.
- In Photoshop and many other graphics applications, the ALT, CTRL, and SHIFT modifier keys modify a tool or switch to a complementary tool while the modifier key is pressed.

The Tablet Keys are fully customizable, enabling you to make the best possible use of them. You may want to consider the following ways of working with the Tablet Keys:

- Set a pair of keys to commonly used keystrokes, such as [and] to decrease and increase your brush size in Photoshop.
- Set a key to a commonly used keyboard shortcut in order to open files or start an application.
- If you prefer not to (or cannot) use the side switches on your Intuos3 Pen, then set a Tablet Key to right-click or double-click.
- Choose from any of the other available functions.

See [customizing Tablet Keys](#) for more details on the available Tablet Key settings.

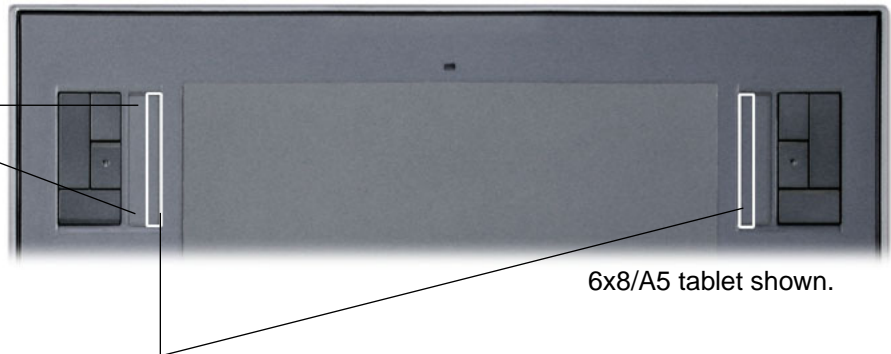
If you require different key functions in different applications, you can easily set up application-specific settings for the tablet controls. See [creating an application-specific setting](#) for more information.

Using the Touch Strips

Slide your finger over the Touch Strip to quickly zoom in or out, scroll up or down, or perform other functions with your secondary hand while using your dominant hand to work with your pen or mouse. You can also set each Touch Strip to issue custom keystrokes. For example, you might set a Touch Strip action to cycle through layers when working in Photoshop. You can use the Touch Strips in three different ways:

- **Standard operation:** Slide your finger up or down to zoom, scroll, or issue the assigned keystroke function.
- **Continuous operation:** Press and hold your finger at either end of the Touch Strip to continuously scroll. This is useful for scrolling through long documents or web pages.
- **Single step operation:** Press and release your finger at either end of the Touch Strip to zoom, scroll, or issue the assigned keystroke function one step at a time.

Press and hold here for continuous operation, or press and release for single step operation.



To use the tip of your Intuos3 Pen to operate the Touch Strip, rest the pen tip against the edge of the Touch Strip adjacent to the tablet's active area. Then press hard enough to issue a click and move the pen tip up or down along the Touch Strip edge. (Only the inside edge of the Touch Strip responds to pen input.)

By default, the Touch Strips enable you to zoom in most graphics applications and to scroll in other applications. Each Touch Strip can be independently customized to meet your needs.

Many applications support two methods of zooming. In Photoshop, Painter, and some other applications, you can specify the center point for zooming by pointing with your Intuos tool while operating the Touch Strip (make sure you are pointing inside the document window with an Intuos tool). Otherwise, the image will zoom centering on the document window.

Tip: Photoshop users who frequently change brush sizes may want to assign the [and] keys to a Touch Strip. Sliding your finger up or down the Touch Strip will then change the brush size without the need to reach for the keyboard or access the Photoshop BRUSHES palette.

See [customizing tablet Touch Strips](#) and [advanced Touch Strip settings](#) if you would like to customize the way your tablet Touch Strip(s) work.

CUSTOMIZING

After you master the basics of using your Intuos3 professional pen tablet, you may want to customize the way Intuos3 works. This chapter describes how to use the Wacom Tablet control panel to adjust your Intuos3 tablet and tool settings.

Advanced users can learn how to further optimize Intuos3 by creating [application-specific settings](#).

[Opening the control panel](#)

[Control panel overview](#)

[Control panel settings](#)

Opening the control panel

To open the control panel, use the Intuos3 tool you wish to customize on the tablet:

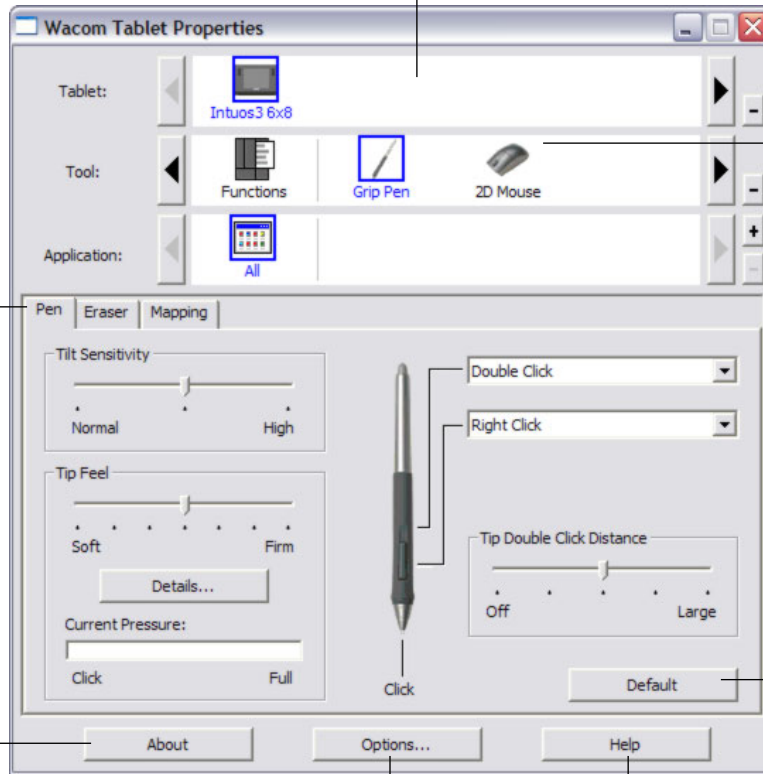
- **Windows.** Click on the Windows START button and choose ALL PROGRAMS. (For versions other than Windows XP, choose the PROGRAMS group.) Then select WACOM TABLET and choose the WACOM TABLET option.
- **Macintosh.** Open SYSTEM PREFERENCES from either the Dock, the Apple menu, or from the APPLICATIONS folder. Then double-click on the WACOM TABLET icon.

After you have opened the Wacom Tablet control panel, you can begin customizing Intuos3.

Control panel overview

Use the Wacom Tablet control panel to customize Intuos3.

The upper portion of the control panel displays icons representing your TABLET, TOOLS, and the APPLICATIONS with customized tool settings.



Tabs display customizable settings for the selected tool.

Displays a dialog box containing information about the tablet and tablet software, including an option to access the DIAGNOSTICS dialog box.

Displays advanced options.

Displays this User's Manual.

Choose FUNCTIONS to customize your tablet control and Pop-up Menu settings.

Choose PEN to customize your Intuos3 Pen settings.

Choose MOUSE to customize your Intuos3 Mouse settings.

The DEFAULT button resets the selected tab to its default settings.

As you explore the control panel, experiment with different settings to find what works best for you. Any changes you make will take effect immediately, but you can always click DEFAULT to return a tab to the factory settings. See [control panel settings](#) for more information on the features and functions of each tab.

Tool Tips are available for most control panel items. Simply position the screen cursor over an item and let it rest there; in a few moments the Tool Tip will pop up.

Additionally, your keyboard tab and arrow keys can be used to navigate the control panel.



Control panel lists and tabs: The control panel TABLET, TOOL, and APPLICATION lists allow you to select the tablet, tool, or application for which you want to change settings. To change tool settings, open the control panel using the tool you wish to customize. The tool will be automatically selected in the TOOL list, and the appropriate tabs will be displayed. To customize settings for a different tool, select it from the TOOL list by clicking on its icon (the appropriate tabs will be displayed). See [customizing the pen](#), [customizing the mouse](#), and [customizing the tablet functions](#) for more information.

The TABLET list displays an icon for any supported tablet that has been installed on your system. All settings shown below this list apply to the selected tablet.

The TOOL list displays an icon for the tablet FUNCTIONS, and for each Intuos3 tool that has been used on the tablet. When a new tool is first used on the tablet it is automatically added to the tool list, and functions with the default settings. See also [working with multiple tools](#).

The APPLICATION list lets you define tool settings that only apply to a specific application. See [working with application-specific settings](#).



Your current selections are highlighted.

Note: The control panel APPLICATION list is for advanced users; it is not necessary to select or add applications in order to customize your Intuos3 tool(s).

Control panel settings

Use these sections as a reference when working with the Wacom Tablet control panel; they provide detailed information about each tab and some of the more complex topics. Many of the sections also contain useful customizing tips.

[Customizing the Pen](#)

[Customizing the Mouse](#)

[Tablet to screen mapping](#)

[Customizing the tablet functions](#)

[Customizing the Pop-up Menu](#)

[Working with multiple tools](#)

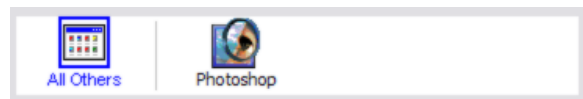
[Working with application-specific settings](#)

Customizing the Pen

Customizing your Intuos3 Pen is easy. First open the Wacom Tablet control panel using the pen. The pen will be selected in the TOOL list and the appropriate tabs will be displayed. Select a tab and choose from the available options.



[Tablet to screen mapping](#)



[Working with application-specific settings](#)

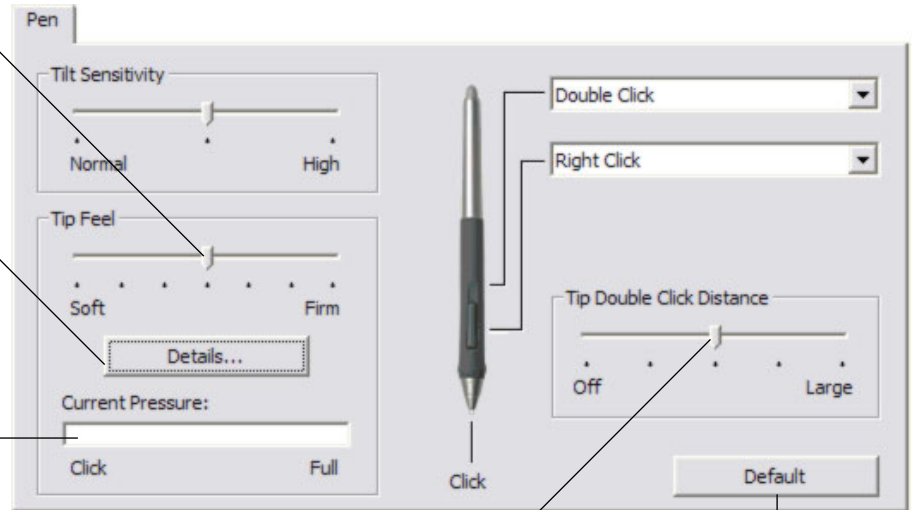
Adjusting tip feel and double-click

To adjust the tip sensitivity of your Intuos3 Pen, select the PEN tab. To create broad brush strokes or to click with a light touch, use a soft tip setting. For maximum control while drawing thin lines, use a firm tip setting.

Customizes the amount of pressure needed to click or draw. Drag the slider to a softer or firmer setting.

Displays the tip [FEEL DETAILS](#) dialog box where you can further customize the tip sensitivity.

Press down on the tablet with your pen tip to test the current tip feel setting. You can use the CURRENT PRESSURE bar to determine how hard you must press on the pen to reach maximum pressure.



Adjusts the size of the double-click area. A larger setting makes double-clicking easier.

Drag the slider to the OFF position if you do not want [double-click assist](#).

Returns the tab settings to their factory default conditions.

Hints:

- Use a soft TIP FEEL for a wider range of pressure values with most pressure-sensitive applications.
- In some applications a soft pressure setting can make the pen overreact – any small press on the pen is magnified on the screen. If you experience this, try a firmer TIP FEEL setting.
- **Double-clicking:** To make double-clicking easier, expand the tap area that accepts a double-click (the double-click distance).

Note: A large double-click distance may cause a delay at the beginning of your brushstrokes in some drawing applications. If you notice such effects, try setting a smaller double-click distance and using the side switch to double-click (see [using the side switch](#)). You can also set one of the Tablet Keys to double-click.

Adjusting eraser feel

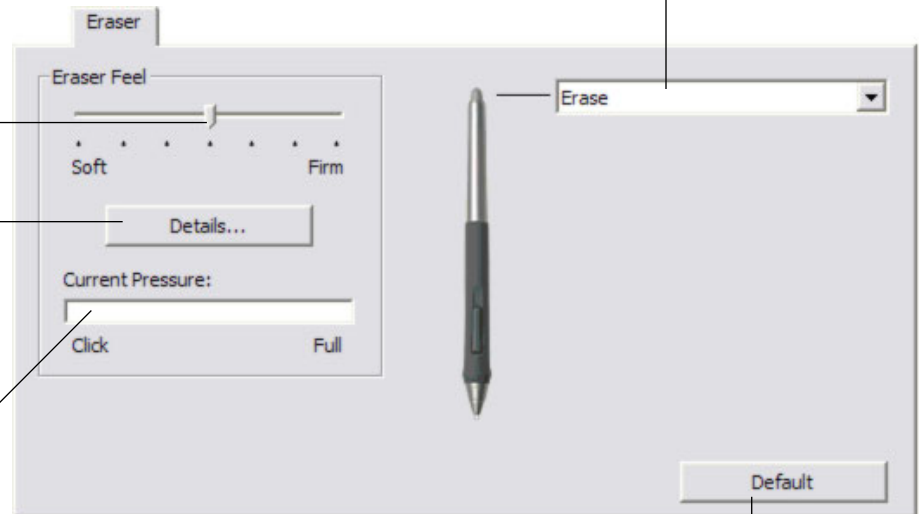
To adjust the eraser sensitivity of your Intuos3 Pen, select the ERASER tab. To erase with a broad stroke or to click with a light touch, use a soft eraser setting. For maximum control while erasing, use a firm eraser setting.

Select the [button functions](#) to perform when using the eraser.

Customizes the amount of pressure needed to erase. Drag the slider to a softer or firmer setting.

Displays the eraser [FEEL DETAILS](#) dialog box where you can further customize the eraser sensitivity.

With your screen cursor positioned over an empty area of your desktop, press down on the tablet with your tool's eraser to test the current eraser feel setting. You can use the CURRENT PRESSURE bar to determine how hard you must press on the eraser to reach maximum pressure.



Returns the tab settings to their factory default conditions.

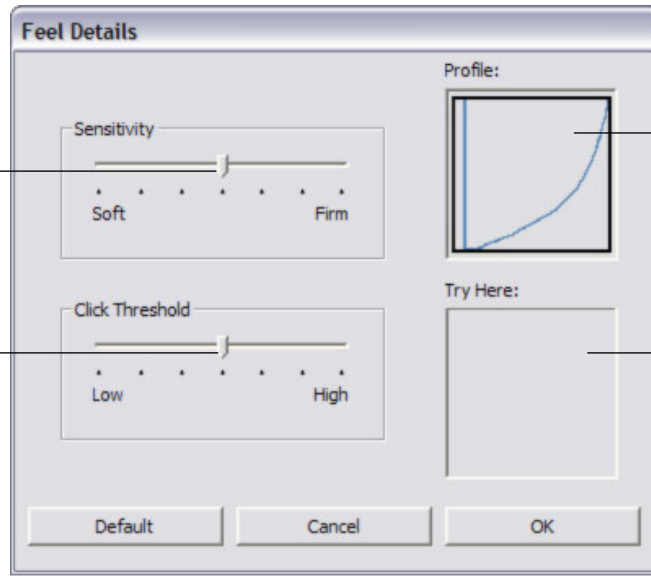
Advanced tip and eraser pressure settings

To further customize tip or eraser pressure settings, from the PEN or ERASER tab click on the DETAILS... button to display the FEEL DETAILS dialog box. The options within this dialog box enable you to change the tip or eraser pressure sensitivity and click threshold settings independently. (In the PEN and ERASER tabs, these settings are adjusted simultaneously with the TIP FEEL or ERASER FEEL slider.)

Important: The TIP FEEL or ERASER FEEL slider overrides the detail pressure settings. If you customize the detail settings, then drag the slider, your detail settings will be removed.

Drag the slider to select a pressure sensitivity setting. If you have a soft touch and want to achieve full pressure without having to apply full force to your pen, choose a softer setting.

Drag the slider to adjust the click threshold level. This setting determines the amount of force required to generate a tip click.



The PROFILE graphically displays the selected pressure SENSITIVITY curve and CLICK THRESHOLD settings.

A curve that increases quickly makes the pen feel more sensitive.

Using your pen tip or eraser, make several strokes within the box to test the results of your changes.