

Directions

Meanings of icons:



Forbidding: forbid improper operations to avoid damaging the Notebook PC.



Caution: cautions for operators to avoid potential damages. Please note and remember.



Importance: important information, common notes, definitions, general knowledge and references, etc.

Other trademarks and trade name may be used in this manual to refer to either the entities claiming the marks and names or their products. The manufacture disclaims any proprietary interest in trademarks and trade names other than its own.

Information in this manual is subject to change without notice.

Reproduction in any manner whatsoever without the written permission from the manufacture is strictly forbidden.

Product images in this manual are for your reference only.

Content

Directions	1
Safety Precautions	4
1 Knowing Your Notebook PC	6
1-1 Top Side	6
1-2 Right Side	7
1-3 Left Side.....	7
1-4 Rear Side.....	7
1-5 Bottom Side	7
2 Caring the Notebook PC	8
2-1 LCD Screen	8
2-2 Hard Disk Drive (HDD)	8
2-3 Battery Pack	9
2-4 Keyboard	9
2-5 Touch Pad	9
2-6 Other accessories	9
2-7 If the water comes into the Notebook PC	10
2-8 Other Notes	10
3 Traveling with the Notebook PC	11
3-1 Attention.....	11
3-2 How to enter the suspend mode	11
4 Keep the data for future possible use	12
4-1 HDD Partition.....	12
4-2 Class the data in the HDD	12
5 Getting Started	13
5-1 Install the Rechargeable Battery.....	13
5-2 Remove the Battery Pack	13
5-3 Connecting the Power Adapter	14
6 Using Your Notebook PC	15
6-1 Turning on the Notebook PC	15
6-2 Adjust the Brightness of LCD Screen	15
6-3 Keyboard Usage.....	15
6-4 Touch Pad(Optional)	16
6-5 Card Reader Usage	17
6-6 The Memory Card	18
7 Internet Connection	18
7-1 Connect the Lineate LAN	18
7-2 Wireless LAN	19
8 Bluetooth(Optional)	20
8-1 Initial Bluetooth Configuration Wizard	20

8-2 Add a Bluetooth Device.....	21
8-3 Establish a connection	22
8-4 Bluetooth Service Selection	22
8-5 Terminate a connection.....	22
9 Power Managing System.....	23
9-1 Battery System	23
9-1-1 Checking Battery Power	23
9-1-2 Charging the Battery Pack	24
9-1-3 Low Power Warning	24
9-1-4 Battery Power	24
9-1-5 Store the Battery Pack	24
9-1-6 Prolonging the Battery's Life	24
9-2 Power Management Modes	25
9-2-1 Standby mode of the System	25
9-2-2 Hibernate	25
9-2-3 Log Off	25
9-2-4 Restart the System	26
9-3 Power Saving	26
9-3-1 Connect the Adapter without using Battery Pack	26
9-3-2 Adjust the brightness of LCD Screen.....	26
10 Upgrading Your Notebook PC	27
10-1 Connect the External Monitor	27
10-1-1 How to connect the External Monitor	27
10-1-2 Connect Keyboard and Mouse	27
10-1-3 Connect Audio Device.....	27
10-1-4 Lock Port.....	28
10-2 Enter the BIOS Setup Menu	28
11 Appendix	30
11-1 Troubleshooting.....	30
11-2 Specifications	32

Safety Precautions

1. DO NOT press or touch the LCD Screen. DO NOT place the Notebook PC with small items, they may scratch LCD Screen or enter the Notebook PC.
2. DO NOT expose the Notebook PC to dirty or dusty environment. Keep the environment clean and dry.
3. DO NOT place the Notebook PC on uneven or unstable work surface.
4. DO NOT place or drop objects on the top of the Notebook PC. DO NOT shove any foreign objects into the Notebook PC. DO NOT cover the LCD Screen strongly.
5. DO NOT expose the Notebook PC to strong magnetic or electrical fields; DO NOT place the floppy disk near or on the Notebook PC, that may loss the data of the floppy disk.
6. DO NOT leave the Notebook PC facing the sun as it can damage the LCD Screen, especially in the car.
7. SAFE TEMP: This Notebook PC should only be used in environments with ambient temperatures between 5°C (41°F) and 35°C (95°F).
8. DO NOT expose the Notebook PC to or use near liquids, rain, or moisture.
9. Caution: risk of explosion if battery is replaced by an incorrect type. Dispose of used batteries according to the instructions.
10. DO NOT throw the Notebook PC in municipal waste. Check local regulations for disposal of electronic products. Please recycle the Battery Pack, and check with your Local Authority or retailer for recycling advice.
11. The Notebook PC and the Adapter may occur some heat during operating or charging. DO NOT leave the Notebook PC on your lap or any part of the body in order to prevent discomfort or injury from heat exposure.
12. INPUT RATING: Refer to the rating label on the Notebook PC and be sure that the Power Adapter complies with the rating. Only use attachments or accessories specified by the manufacturer.
13. Checking the connections between the main unit and attachments before turning on the Notebook PC.
14. DO NOT use the Notebook PC during eating food avoid dirtying the Notebook PC.
15. DO NOT insert anything into the Notebook PC that may result in short circuit or damage the circuit.
16. Powering off the Notebook PC, if you want install or remove some external devices, which are not support hot-plug.
17. Disconnect the Notebook PC from the electrical outlet and remove any installed batteries before cleaning. And Keep it away from children.
18. DO NOT disassemble the Notebook PC, only a certified service technician should perform repairs on your computer. Otherwise, problem may result and the manufacturer should not hold responsibility for the damage.
19. Only use Battery Packs approved by the manufacturer or else damage may occur.
20. The Notebook PC has some little metal flake to disperse heat. DO NOT place the Notebook PC on soft objects (e.g.: bed, sofa, your lap), or else the Notebook PC may become hot and halt the system operating.

Notice for the USA FCC Part 15:

This equipment has been tested and found to comply with the limits for a Class B digital device, pursuant to Part 15 of the FCC Rules.

These limits are designed to provide reasonable protection against harmful interference in a residential installation.

This equipment generates, uses and can radiate radio frequency energy. However, there is no guarantee that interference will not occur in a particular installation. If this equipment does cause harmful interference to radio or reception, which can be determined by turning the equipment off and on, the user is encouraged to try to correct the interference by one or more of the following measures:

- Reorient or relocate the receiving antenna.
- Increase the separation between the equipment and receiver.
- Connect the equipment into an outlet on a circuit different from that to which the receiver is connected.
- Consult the dealer or an experienced technician for help.

This device complies with part 15 of the FCC Rules. Operation is subject to the following two conditions:

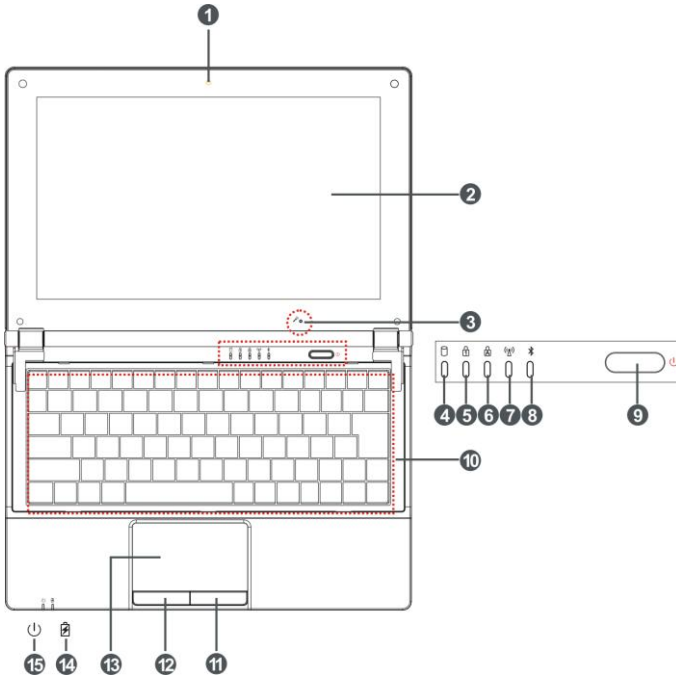
- 1) This device may not cause harmful interference, and
- 2) This device must accept any interference received, including interference that may cause undesired operation.

CAUTION: To comply with the limits of the Class B digital device, pursuant to Part 15 of the FCC Rules, this device is comply with Class B limits. All peripherals must be shielded and grounded. Operation with non-certified peripherals or non-shielded cables may results in interference to radio or reception.

MODIFICATION: Any changes or modifications not expressly approved by the grantee of this device could void the user's authority to operate the device.

1 Knowing Your Notebook PC

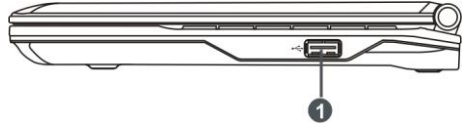
1-1 Top Side



1. **Built-in Camera**
Click Fn+F1 to turn on or off the camera function.
2. **LCD Screen**
3. **Microphone**
4. **HDD Status Indicator**
Light is green when the HDD is in active mode.
5. **Numeric Keypad Indicator**
Click Fn+NumLk to turn on the light and the numeric keypad is unlocked.
6. **Cap Lock Indicator**
Light is green when the cap keypad is unlocked.
7. **WiFi/3G Indicator**
8. **Bluetooth Indicator**
* The Bluetooth is optional that it may be unavailable for your PC.
9. **Power button**
10. **Keyboard**
11. **Right-key**
12. **Left-key**
13. **Touch Pad**
14. **Charge Indicator**
Light is orange during being charged and is green when the battery is fully charged or discharged; light flashes when the battery is weak.
15. **Power Indicator**

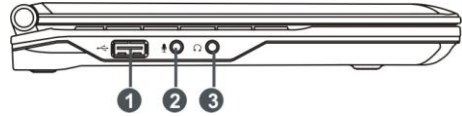
1-2 Right Side

1. USB Port (2.0)



1-3 Left Side

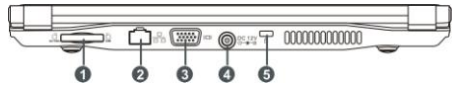
1. USB Port (2.0)
2. Microphone Jack
3. Headphone Jack



The USB card can only be inserted in one orientation. Force to insert the card may in result of damage.

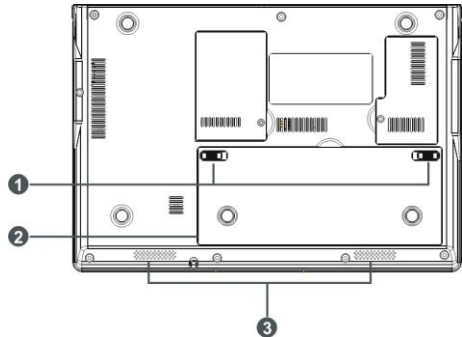
1-4 Rear Side

1. SD/MMC/MS Port
2. Ethernet/LAN Port
3. VGA Port
4. Power Jack
5. Lock Port



1-5 Bottom Side

1. Battery Latch
2. Lithium Rechargeable Battery
3. Speakers



2 Caring the Notebook PC

The Notebook PC is a precision device; the error operation may damage the device.

2-1 LCD Screen

LCD Screen is the most delicate component of the Notebook PC and comprised of thin glass. It may be broken up by external abrupt force. DO NOT scratch the cover of the Notebook PC, or the scrape on the cover cannot remove.

- ✧ DO NOT cover the LCD Screen strongly, or else damage may occur.
- ✧ DO NOT place objects on the keyboard to avoid damaging the screen and keyboard when you cover the LCD Screen.
- ✧ Place the Notebook PC in carrying case to protect it from dirt, water, shock and scratches before traveling.
- ✧ DO NOT drop or place heavy objects on the LCD Screen.
- ✧ DO NOT scratch the LCD Screen with your fingernails or any hard objects.
- ✧ Use a soft and lint-free cloth to wipe your Notebook PC and wipe it gently in order to avoid damaging the LCD Screen.
- ✧ Shut down the LCD Screen, if the Notebook PC will not be used for a long time.
- ✧ DO NOT clean the LCD Screen with chemical cleaners.
- ✧ The LCD Screen DOES NOT come into contact with hard objects (E.g.: cloth button, watchband).
- ✧ Use a soft and lint-free dry cloth to wipe the LCD Screen smoothly. DO NOT use your hand to wipe the LCD Screen directly.
- ✧ DO NOT spill liquid into the Notebook PC as it can damage the components of the Notebook PC.
- ✧ Cover the LCD Screen smoothly in order to avoid moving the hinges and flashing the LCD Screen.



DO NOT clean the Touch Pad with acidic cleaner or spray cleaning solution directly on the Notebook PC.

2-2 Hard Disk Drive (HDD)

- ✧ Place the operating Notebook PC in steady and even table. Poor handling of the Notebook PC may damage the HDD.
- ✧ The HDD is the most delicate component in turning on and powering off the system. The HDD operates at unsteady fast speeds during turning on the Notebook PC; the vibrancy may damage the track of HDD. If the axes of the HDD have not stop completely at the powering off the Notebook PC, the vibrancy may damage the HDD.

2-3 Battery Pack

- ✧ Please recycle the Battery Pack, and check with your Local Authority or retailer for recycling advice.
- ✧ DO NOT put the Battery Pack near or into the fire, or else it may cause fire or explode.
- ✧ The Battery Pack will short circuit if the Battery Pack is punctured or reassembled
- ✧ The ideal temperature range that the Battery Pack be used is between 20°C -30°C . Any temperatures above or below this range will shorten the life of the Battery Pack.

2-4 Keyboard

Keyboard is the most often used component by finger directly. Use a little brush to clean or a can of compressed air to remove dust from between the keys on the keyboard. Moisten a soft, lint-free cloth with water or cleaner and wipe the surface of the keys smoothly.

If the water seeps into the keyboard, the circuit will not be damaged directly because of the no-power supply keyboard. But the deteriorate of the Printed circuit board will occur and will result in malfunction of the keyboard. Contact your dealer for advises at this moment.

2-5 Touch Pad

- ✧ Keep your hand clean when using the Touch Pad, or else the cursor is out of control.
- ✧ If the Touch Pad is dirty, moisten a soft, lint-free cloth with water and wipe the Touch Pad smoothly.
- ✧ The Touch Pad is pressure sensitive, DO NOT scratch the Touch Pad with hard objects, or rest heavy objects on it.

2-6 Other accessories

Following the below steps before cleaning your Notebook PC and the accessories.

1. Turn off the Notebook PC. Disconnect your Notebook PC and all external devices from their electrical outlets and remove the installed battery.
2. Use the little dust collector to pump the dust from the slot of plug or keyboard.
3. Moisten a soft, lint-free cloth with water and wipe the surface of the Notebook PC smoothly. DO NOT seep liquid into the Notebook PC in order to avoid shorting of circuit and the damage of the Notebook PC.
4. Turn on the Notebook PC after drying it.

2-7 If the water comes into the Notebook PC

- ✧ DO NOT turn on the Notebook PC immediately.
- ✧ Disconnect the outlet cable and detach the Battery Pack in order to turn off the Notebook PC, instead of pressing the POWER button to turn off it. Disconnect all external devices.
- ✧ Spill out the water from the Notebook PC. Use a soft and waterish paper or cloth to wipe the surface of the Notebook PC lightly.
- ✧ Use the fanner to dry the Notebook PC and the accessories, and then send it to the service center for advice.
- ✧ DO NOT use hair drier to dry the Notebook PC, or the high temperature may distort it.
- ✧ DO NOT place the Notebook PC into the dirty carrying case again.

2-8 Other Notes

- ✧ DO NOT expose the Notebook PC in hot environment for a long time, especially in the car. Or the parts of the Notebook PC will be metamorphic.
- ✧ Keep the data for future possible use termly.
- ✧ Renew the hardware or software termly in order to keep the Notebook PC compatible and steady.

3 Traveling with the Notebook PC

Turn off the Notebook PC and disconnect all lines before moving it. Following the below steps, if you want to travel with your Notebook PC.

3-1 Attention

1. Charge the Battery Pack and the spare Battery Pack fully.
2. Turn off the Notebook PC and disconnect from the wall outlets.
3. Shut down the LCD Screen completely and smoothly.
4. Disconnect the AC lines.
5. Disconnect all lines.
6. Place the Notebook PC in carrying case to protect it from dirt, water, shock and scratches before traveling.
7. Check that you have taken the spare Battery Pack, AC Adapter, power lines, manual and warranty card. DO NOT forget the passwords of the Notebook PC and HDD.
8. Find out the voltage type in the countries you will visit. Your Notebook PC comes with a universal AC-DC adapter, so you only need to buy the different power cords to connect the different outlets or the hotel may provide universal outlets to support your power cord as well as voltages.



If you drive your car with the Notebook PC, DO NOT leave the Notebook PC facing the sun. Place it in the shady and cool area.



DO NOT remove the HDD immediately while or after operating. Set the Notebook PC into the Standby mode or Hibernation mode, before moving it.



The connection between Internet and your Notebook PC will be interrupted when the system enter the hibernation mode.

3-2 How to enter the suspend mode

Click the left button of the mouse on the “Start”→ Click the left button of the mouse on the “Turn Off Computer”, Click the left button of the mouse on “Stand By” or “Hibernation” items, then the system will enter the standby mode or Hibernate mode.

If you will attend a meeting with the Notebook PC and want still keep the Notebook PC in the current state, please set the system into suspend mode. When you turn on the Notebook PC again, the system will return the last state, which you want.

4 Keep the data for future possible use

Your computer has been fully tested and complies with the system specifications before shipping. However, incorrect operations, mishandling or any other reasons may loss your data, e.g.: Delete or cover the data by error, Damage the HDD by vibration, Damaged by Network virus, Disaster, Loss the data because of being stolen.

4-1 HDD Partition

The damage of the HDD or the operating system may be result in the loss of the data in the HDD.

So you need to save your data to another memory card to avoid losing the data.

In order to improve the performance of your Notebook PC, the HDD of your Notebook PC can be formatted with some partitions, C, D and so on. Save files to the any partitions except C partition. Then you can retrieval or reinstall the operating system without damaging your data.

Select the available software to part the HDD, as you like.

4-2 Class the data in the HDD

- 1) Files: Office files, Pictures, Music and so on.
- 2) E-mail: Sent mail, Address List and so on.
- 3) Information of Website: The favorite of Explorer, Bookmarks of Net-scape and so on.



Save these data to the same file, or else you may forget copying some files to the spare HDD or the other memory card. Please save your data for future possible use termly.

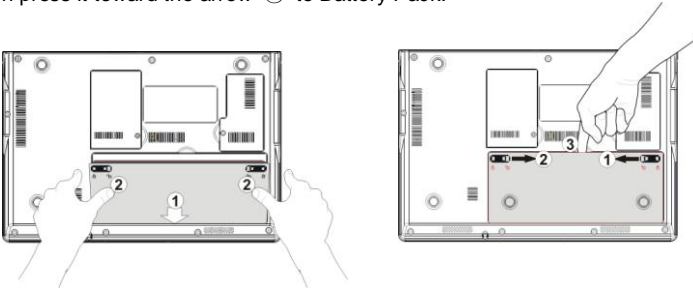
5 Getting Started

5-1 Install the Rechargeable Battery

Power the Notebook PC before using it. There are two ways to power the Notebook PC: Use the AC Adapter to power it or use the removable Battery Pack.

The Notebook PC is designed to work with a removable Battery Pack. Your Notebook PC may or may not have its Battery Pack installed. If your Notebook PC does not have its Battery Pack installed, using the following procedures to install the Battery Pack:

Place the Battery Pack into the card-slots of the Notebook PC toward the arrow ① and then press it toward the arrow ② to Battery Pack.



5-2 Remove the Battery Pack

1. Turn off the Notebook PC, and disconnect all lines.
2. Shut down and turn over the computer to access its base in flat and clean work surface.
3. Slide the Battery Latch toward the arrow ① and slide the Battery Latch toward the arrow ②.
4. Pull the Battery Pack out from the Notebook PC toward ③.



WARNING! For safety reasons, DO NOT disassemble the Battery Pack, DO NOT short the circuit, DO NOT throw the Battery Pack into fire and keep it away from children.



When the Notebook PC with Battery Pack (disconnect the adapter) turns on, the Power Indicator will turn on. And the light will turn off when in standby mode or system halting.



DO NOT attempt to remove the Battery Pack while the Notebook PC turns on, as this may result in the loss of working data.



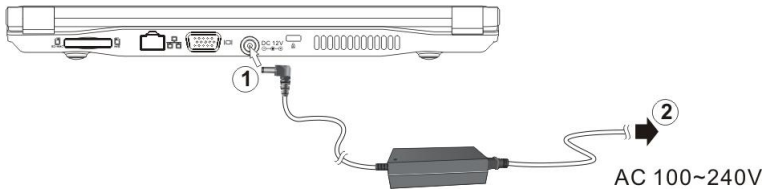
Damage may occur if you use a different adapter to power the Notebook PC or use the Notebook PC's adapter to power other electrical devices.

5-3 Connecting the Power Adapter

The Notebook PC comes with a universal AC-DC adapter and the allowable input voltage of adapter is from 100V to 240V.

Following the below steps to connect the adapter:

1. Take the adapter and the power cord, and then connect the adapter with the power cord.
2. Plug the DC end of adapter into the power jack of the Notebook PC.
3. Insert the AC end to the wall outlet
4. Check the connections above correctly before turning on the Notebook PC.



DO NOT remove the Notebook PC if the HDD is being read or written, that may result in the loss of the data and the damage of the disk. Follow the system steps to turn off the Notebook PC.

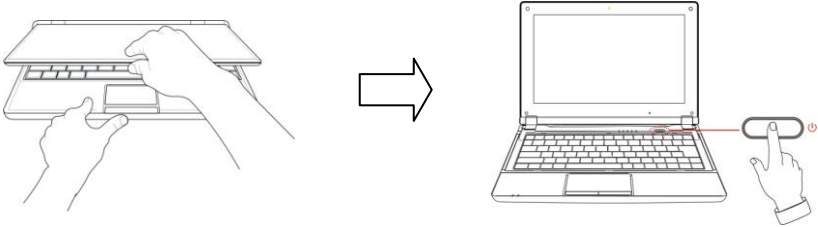


Your Notebook PC and the accessories may differ from the pictures shown.

6 Using Your Notebook PC

6-1 Turning on the Notebook PC

1. Open the LCD screen and adjust the angle of the Notebook PC's LCD Screen
2. Press the POWER button to turn on the Notebook PC.



6-2 Adjust the Brightness of LCD Screen

The Notebook PC uses an active matrix TFT LCD and provides a Display (Monitor) Output Port to connect the external monitor. The Notebook PC supports the function to adjust the LCD Screen through the following composite buttons.


Click	Function
<Fn>+<F10>	Shift between LCD Screen and external monitor
<Fn>+<F11>	Decrease the brightness of screen
<Fn>+<F12>	Increase the brightness of screen

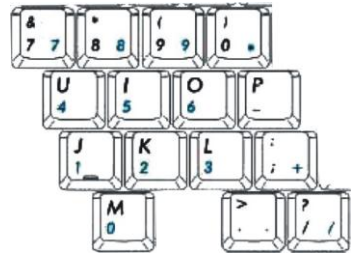


LCD Screen is made of glass and may be damaged if the Notebook PC is dropped or shoves any hard object.

6-3 Keyboard Usage

The Notebook PC's integrated a U.S standard keyboard with 82 keys.

- ✧ Click the numeric/symbol keys to input the desired keys after starting the keyboard.
- ✧ Press <Fn+NumLk> key to enable the keypad, the  light indicates that the keypad is active; press <Fn+NumLk> key again to disable the keypad.



Each key on the keyboard may have multiple functions in different software.

Function Keys

These function keys with the color word or icon sign means that their function only can be activated when clicking the function key and the <Fn> key at the same time.




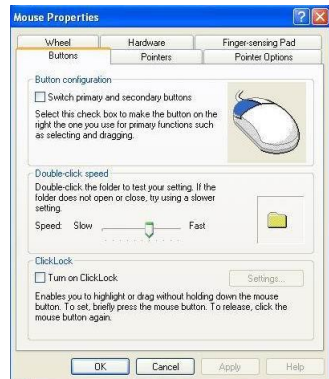
- ◇ <Fn>+<F1>: Turn on or turn off the camera window.
- ◇ <Fn>+<F2>: Turn on or turn off the WiFi.
- ◇ <Fn>+<F3>: Turn on or turn off the mute.
- ◇ <Fn>+<F4>: Turn down the volume.
- ◇ <Fn>+<F5>: Turn up the volume.
- ◇ <Fn>+<F6>: Turn on or off the 3G network window.
- ◇ <Fn>+<F10>: Shift between LCD Screen and external monitor.
- ◇ <Fn>+<F11>: Decrease brightness of LCD Screen.
- ◇ <Fn>+<F12>: Increase brightness of LCD Screen.

6-4 Touch Pad(Optional)

The Notebook PC preinstall the software “Finger-sensing Pad”, which is a pointing device used in electronic devices, when the cursor control is in demand. To move the cursor, the user can just lightly slide on the surface of the smooth sense area. Please refer to the following detailed operation:

ClickLock Function

Move the cursor to the icon  at the right-bottom corner of the desktop and right click the pad, then select “Settings” to enter the menu “Mouse Properties” as shown right:

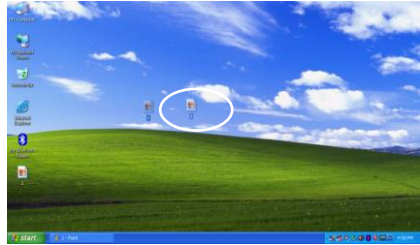


On the menu, click to tick the panel in front of “Turn on ClickLock” and then click “Setting” to enter the label “Setting for ClickLock” that you can click to adjust the respond time to lock as shown right.

Click “OK” to return to menu “Mouse Properties” after setting after adjustment, then click “Apply”—“OK” to activate the clicklock function.





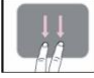

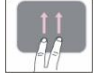



Since the function is activated, the mouse would be locked in the desired time and the folder would remove as the cursor; click the right button of the mouse again to place it on the new desired position, that enable you to highlight or drag without holding down the mouse button.



Multi-Finger Gesture

The software “Finger-sensing Pad” provides intuitive multi-finger gestures, which can be applied to customized functions, like Zoom In/Out, Scrolling, etc. See as below:

Illustration	Gesture	Function	Illustration	Gesture	Function
	Expand	Zoom Out Object		Flick Right	Forward
	Narrow	Zoom In Object		Flick Left	Backward
	Scroll Down	Next Page		Rotate	Clockwise Object
	Scroll Up	Previous Page		Rotate	Anticlockwise Object

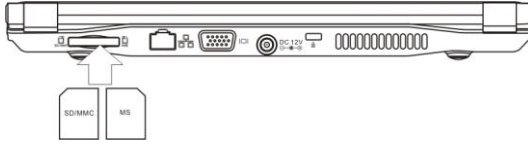
6-5 Card Reader Usage

The Notebook PC has a single built-in memory card reader that can read the following flash memory cards: Secure Digital, Multi-Media Card, Memory Stick. See the manual of the relevant card for more information.

6-6 The Memory Card

Insert The Memory Card

The card only can be inserted in one orientation (with the card's electrical contacts towards the bottom of the unit). Force to insert the card may in result of damage.



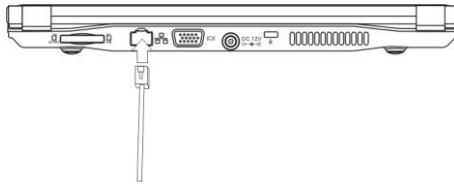
Pull out the Memory Card

Stop the card's operation, then pull the card out from the port.

7 Internet Connection

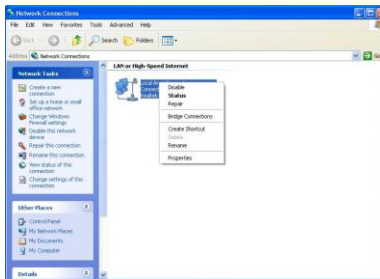
7-1 Connect the Lineate LAN

Before connecting the network with your computer, setup your network system first, and then connect telecommunication line to your Notebook PC.



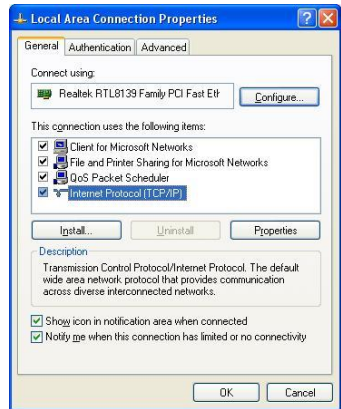
Setting the Network system

Click the right button of the mouse on the "My Network Places", click the left button of the mouse on the "Properties" item to enter the "Network Connections" windows, as show below:



Contact your Internet service provider for more information about the setting of IP and DNS.

Click the right button of the mouse on the icon of “Local Area Connections”, click left button of the mouse on the “Properties” item to display the menu of “Local Area Connection Properties”, as show right:

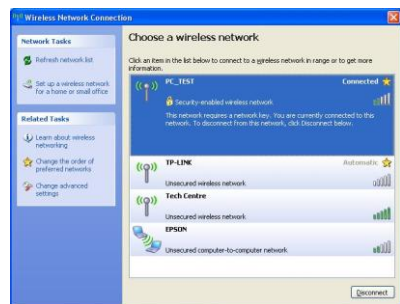


On the menu of “Local Connections Properties”, click the left button of the mouse on the “Internet Protocol(TCP/IP)”→ click the left button of the mouse on the “Properties” to enter the “Internet Protocol (TCP/IP) Properties” windows. Select the “General” label on the “Internet Protocol (TCP/IP) Properties” windows, and enter the address of your IP and DNS, or select “Obtain an IP address automatically”.

7-2 Wireless LAN

Click <Fn>+<F2> to turn the wireless network on or off. When the wireless network turns on, the WIFI Indicator turns green and the icon of WIFI will display on the right-bottom of the desktop.

Click the right button of the mouse on the icon of WIFI, click the left button of the mouse on the “View Available Wireless Networks” of the pop-up menu or click the left button of the mouse doubly on the icon of WIFI to enter the windows of “Wireless Network Connection”, as show below:



While you don't need to use the WIFI network, press <Fn>+<F2> to turn off and it can increase the usage time of the Battery Pack.

Click the left button of the mouse on the “Refresh” of the windows, the system will search and list the available wireless Networks. The information of the Networks will be displayed when you select the relevant network. Some Networks may need to type the password before connecting.




8 Bluetooth(Optional)

The Notebook PC supports Bluetooth function under Window XP. You are enabled to communicate wirelessly with other Bluetooth enabled computers, mobile phones or the related devices.

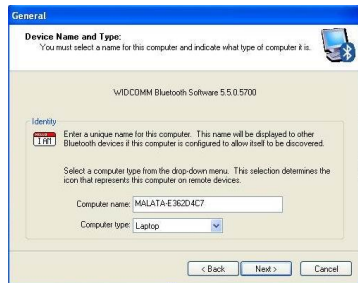


You can also purchase the Bluetooth software from the local distributor or its authorized center.

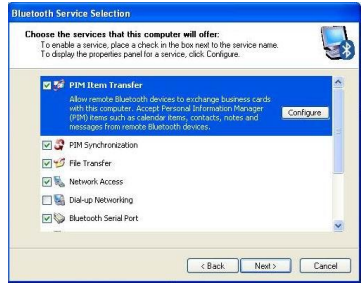
8-1 Initial Bluetooth Configuration Wizard

After turning on the Notebook PC, click the right button of the mouse on the Bluetooth icon  at the right-bottom corner of the desktop and select “Start using Bluetooth” on the pop-up menu to enter the menu “Initial Bluetooth Configuration Wizard” as shown below,

Then click to select the location where you like the Bluetooth icon to place; click “Next” to enter the menu “General” to set the name and the type of the computer.



After setting, click “Next” to enter the menu as below; if needs to configure the Bluetooth services that this computer will offer to other Bluetooth devices, click “Next” and it would enter the menu “Bluetooth Service Selection”.



On the above menu, you can select the desired service offered by the computer.

After the service item selected, click “Next” to enter the wizard menu for “to connect the Bluetooth computers, phones, handsets and so on”; to start connecting with another Bluetooth device now, click “Next”; if desires to connect later, click “Skip” and complete Initial Bluetooth configuration.



Initial Bluetooth Configuration Wizard is just available when you start using the Bluetooth at the first time.


8-2 Add a Bluetooth Device



Before this step, please active your Bluetooth device (mobile phone, bluetooth earphone and ect).



You can also click “Next” as in the above menu ”to start connecting with another Bluetooth device now” to add a Bluetooth device.

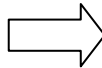
After initialization, click the right button of the mouse on the Bluetooth icon  and select “Add a Bluetooth Device” as shown below:



On the above menu, click “Next” to start searching, the found Bluetooth devices will be listed on the window.

8-3 Establish a connection

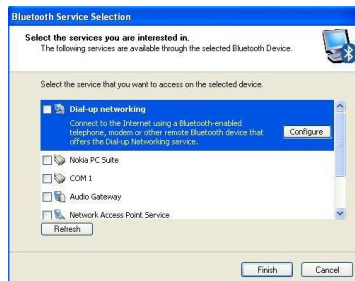
On the above window, select one Bluetooth device and click "Next" to enter the menu, see as below (ex: for 5300 mobile):



The system would auto create one passkey when you use the Bluetooth for the first time, or you can enter one passkey as you like and please remember it; then input the same one in your Bluetooth device as the instruction to finish the pairing.


8-4 Bluetooth Service Selection

Proceed, the "Bluetooth Service Selection" window would appear, which shows the Bluetooth Service that your bluetooth device can supply as shown below:



On the menu, tick one panel in front of the service function item and click "Next" to set. After that, you can enjoy the Bluetooth function.

8-5 Terminate a connection

Click the right button of the mouse on the icon  and select "Stop the Bluetooth Device".



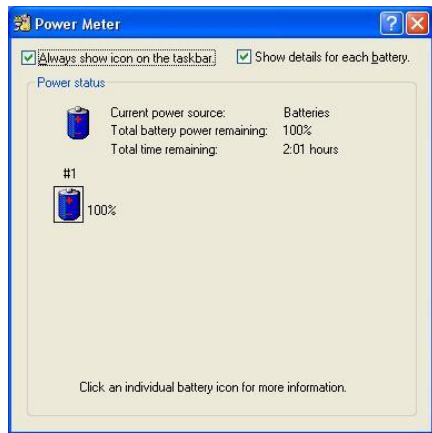
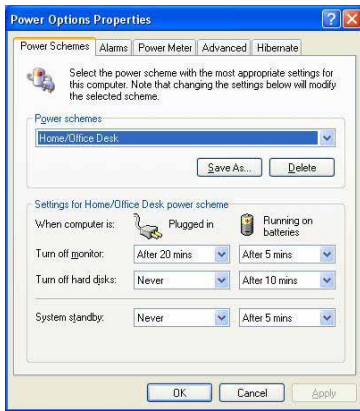
9 Power Managing System

9-1 Battery System

The Notebook PC is designed to work with a removable and high capability Battery Pack.

9-1-1 Checking Battery Power

Click the left button of the mouse on “Start”, click the left button of the mouse on “Control Panel”, and click the left button of the mouse doubly on “POWER Options”, the “Power Options” menu will display. Click the left button of the mouse on “Power Meter” label to check the power of the battery.



Set the shortcut to check the remaining battery power: click the left button of the mouse on “Advanced” label, select “ Always show icon on the taskbar”. Then move your cursor over the power icon in the left-bottom of the desktop to see the battery power.



DO NOT attempt to remove the Battery Pack while the Notebook PC is turned on, as this may result in loss of working data and damage of the Notebook PC.



When you use your Notebook PC first time, check the remaining battery power, and make sure that the new Battery Pack has been completely charged.



The Battery Pack has limit on the number times it can be recharged. In any case, the Battery Pack’s usage time will eventually decrease and a new Battery Pack must be purchased from an authorized dealer for this Notebook PC.

9-1-2 Charging the Battery Pack

When you use your Notebook PC first time, check the remaining battery power, and make sure that the new Battery Pack has been completely charged before the Notebook PC is disconnected from external power.

The Battery Pack begins to charge as soon as the Notebook PC is connected to the external power, and the Charge Indicator light will turn on. When the Battery Pack charges completely, the Charge Indicator light will turn off. Save your working data or connect the adapter when the battery power is low. And the battery will stop charging if the battery is fully charged.

9-1-3 Low Power Warning

The system will display the warning windows and advise you to connect the adapter, when battery power is low. Save your working data if you don't have the adapter at this moment. The warning function can be set in the "Power Options" menu.

9-1-4 Battery Power

The Battery Pack's actual figure varies will depend on how you use the power saving features, your general work habits, the CPU, system memory size, and the size of LCD Screen. Please turn on the manage power function and connect the adapter to save electric power.

9-1-5 Store the Battery Pack

DO NOT leave the Battery Pack discharged; the Battery Pack will discharge over time. But in any case, the Battery Pack's usage time will eventually decrease and a new Battery Pack must be purchased.

It is ideal that the battery be stored in a temperature range between 10°C and 35°C. Any temperatures above or below this range will shorten the life of the battery. If the temperature is too high, it may cause fire or explode.



DO NOT throw the Notebook PC in municipal waste. Check local regulations for disposal of electronic products.

9-1-6 Prolonging the Battery's Life

- ◇ Use the AC adapter wherever the AC wall outlet is available. Charge the battery completely for using in your traveling.
- ◇ The ideal working temperature is from 20°C to 30°C. Any temperatures above or below this range will shorten the actual usage time of the Battery Pack.
- ◇ After charging the Battery Pack completely, keep the Battery Pack in the Notebook PC. It will stop charging if the Battery Pack is fully charged and not be damaged.

- ◇ DO NOT leave the Battery Pack discharged over three month, the Battery Pack will be damaged, it must continue to be charge every three months, as well as the spare Battery Pack.
- ◇ Purchase an additional Battery Pack.
- ◇ DO NOT often plug or pull the Adapter from the electric outlets, it is the best way to prolong the Battery Pack's life.
- ◇ The life expectancy of the Battery Pack is approximately 300 recharges.
- ◇ Store the Battery Pack in cool and dry place, the ideal temperature is from 10°C to 30°C. The Battery Pack will discharge quickly in hot environment and the life of the Battery Pack will be shortened.
- ◇ DO NOT throw the Notebook PC in municipal waste. Check local regulations for disposal of electronic products.
- ◇ DO NOT put the Battery Pack near or in the fire, or else it may cause fire or explode.
- ◇ The Battery Pack will short circuit if the Battery Pack puncture or reassemble.

9-2 Power Management Modes

9-2-1 Standby mode of the System

The function of Standby mode: Store your current data and status in RAM, turn off the external device, but the Power Indicator Light still turns on. If you press the POWER button, the system will operate again.

9-2-2 Hibernate

In "Hibernate" mode: The current data and status are stored on HDD and the Notebook PC turns off (the Power Indicator Light will turn off). Press the POWER button to restarting the system.

Activate the "Hibernate" function: Click the left button of the mouse on the "Hibernate" label of the "Power Options Properties" windows, select the "Enable Hibernate", then "System Hibernate" will display in "Power Options Properties" windows.

9-2-3 Log Off

Click the left button of the mouse on "Start" → click the left button of the mouse on "Turn Off Computer" → select "Standby" or "Hibernate" → Enter the standby mode or the hibernate mode.

If the system is force to turn off because of using up the power in the standby mode. Your current data and status will be stored on the HDD. The system will operate again after changing a power-full battery or connecting the wall outlets.

When the power is used up, the Notebook PC will exit the standby mode and turn off. Store your working data, before using up the power of the Battery Pack.

9-2-4 Restart the System

Press POWER button to exit the suspend mode and enter the current status. And the “restart” function will reactivate all the operating programs.



Press and hold the POWER button for over 4 seconds to turn off the Notebook PC if the system halts. Press and hold the POWER button for over 2 seconds to turn off in normal mode.

9-3 Power Saving

When you use a battery as the source power for your Notebook PC, you can take advantage of power management settings to conserve battery life.

9-3-1 Connect the Adapter without using Battery Pack

The Battery Pack has a limit on the number times it can be recharged. DO NOT use the Battery Pack if you have the adapter.

9-3-2 Adjust the brightness of LCD Screen

If necessary, adjust the brightness of the LCD Screen in order to save the electric power. Close the LCD Screen if you don't need to use your computer for a brief period.

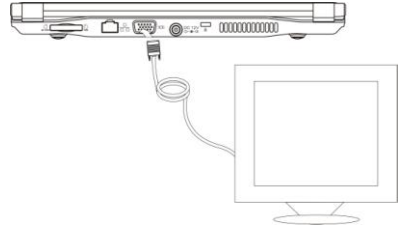
10 Upgrading Your Notebook PC

10-1 Connect the External Monitor

The Notebook PC supplies a VGA port for connecting External Monitor or projective device.

10-1-1 How to connect the External Monitor

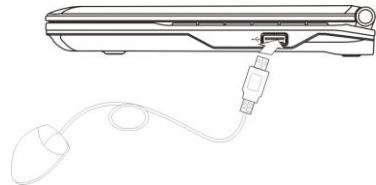
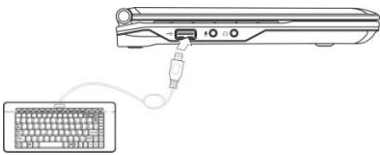
1. Turn off the Notebook PC and insert the 15-pin D-sub monitor plug to the external monitor.
2. Turn on the Notebook PC.



<Fn>+<F10>: Shift between LCD Screen and external monitor.

10-1-2 Connect Keyboard and Mouse

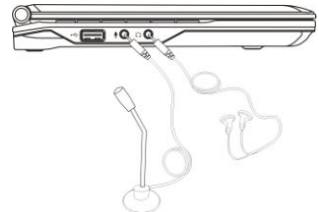
The Notebook PC's integrated a U.S standard keyboard with 82 keys. If you want to use the external keyboard or mouse, connect the external keyboard and external mouse by the USB port.



When you disconnect the external keyboard or external mouse from the computer, grasp the connector, not the cable itself, and pull firmly but gently to avoid damaging the cable.

10-1-3 Connect Audio Device

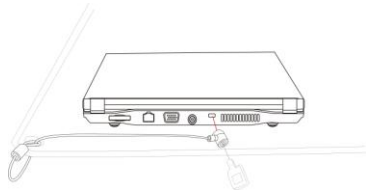
The Notebook PC can be connected headphone, sound box and microphone.



The speaker will turn off automatically after connecting the external headphone to the Notebook PC. Excessively loud volume could damage your hearing. So turn down the volume before connecting earphone, and then raise the volume to comfortable level.

10-1-4 Lock Port

The Lock Port allows the Notebook PC to be secured using and can prevent the Notebook PC to be removed from a fixed object.



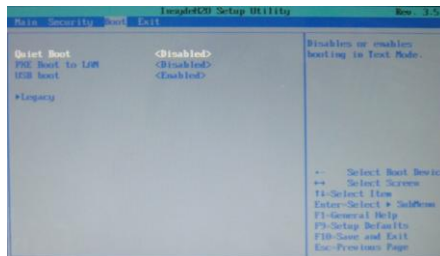
10-2 Enter the BIOS Setup Menu

Follow the below steps to enter the BIOS Setup Menu:

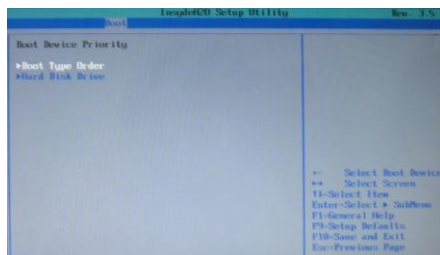
1. Click F2 button quickly during loading the system, then the system will enter “Setup Utility” as shown below:



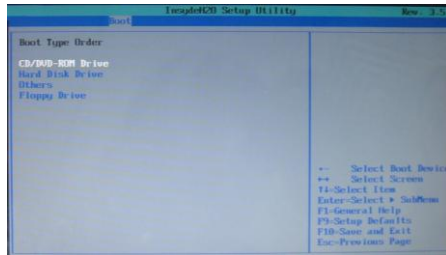
2. Click the left/ right direction keys to select “Boot” and click the Enter button to enter the below menu:



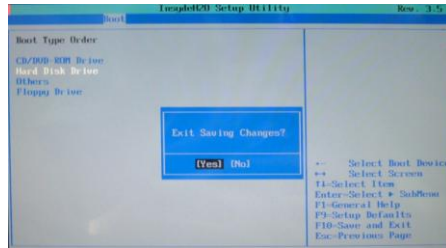
On the menu, click the up/down direction keys to select “Legacy” and click the Enter button to enter the below menu:



3. Click the up/down direction keys to select “Boot Type Order” and click the Enter button to enter the below menu:



4. Click the “Shift” + “+” or click “-” directly to remove the option position and then click the up/down direction button to select the startup option. Proceed to click F10 to popup the dialogue box and select “Yes” firstly, then click the Enter button to save the setting as shown below:



There is no need to change the startup order and click F12 directly to select the temporary startup option after turning on the unit.

11 Appendix

11-1 Troubleshooting

Q1: How to turn off the Notebook PC when the halted system cannot warm boot?

A: Press the POWER button and hold 4 or 6 seconds to turn off the Notebook PC.

Q2: How to check the Notebook PC if the Notebook PC cannot be turned off?

A: 1.If the power is low, connect to the electric outlets.

2.Check that the video display system is not in the external monitor mode.

3.Make sure the indicator of the adapter turns on and the adapter works well.

4. Remove the U disk, SD card and any other external device.

Q3: If the water come into the Notebook PC

A: 1. DO NOT turn on the Notebook PC.

2. Disconnect the outlet cable and detach the Battery Pack in order to turn off the Notebook PC, instead of pressing the POWER button to turn off it. Disconnect all external devices.

3. Spill out the water from the Notebook PC. Use a soft and waterish paper or cloth to wipe the surface of the Notebook PC lightly.

4. Use the fanner to dry the Notebook PC and the accessories, and then send to the service center for advice.

5. DO NOT place the Notebook PC into the dirty carrying case to again.

Q4: After entering the standby mode, why the system cannot reactivate and how to check this problem?

A: Definition:

Standby Mode: Store your current data and status in RAM, turn off the external device, but the Power Indicator Light still turns on. Press POWER button to operate the system again.

Suspend Mode: The computer saves the current state of the system in RAM and switches off power to the CPU. The power indicator light flashes in this mode.

Press the POWER button to restart the system.

Q5: Why the system cannot be recover?

A: 1.Damage from External memory or built-in memory: If the data are saved to an error memory address, the data cannot restore.

2. Incompatible external device: The system may enter the standby mode and cannot resume, when the incompatible external device is connected to the Notebook PC.

3.Error from drive program or application program: The system may refuse to operate some files (file formats: .dll, .sys, .exe and so on.) and enter the standby mode or hibernate mode. If the incompatible application program will be refused by the operating system, the system may fail to recover.

Q6: How to check the system which cannot recover?

- A: 1.Remove the external devices and their device program.
2.Refresh BIOS system
3.Refresh the appropriate program.
4.Remove the error application program.
5.Reinstall the operating system.
6.Send back the Notebook PC for checking.

Q7: How to prolong the life of the Battery Pack?

- A: 1. Adjust the brightness of the LCD Screen to proper level.
2. Turn down the volume.
3. Make the appropriate setting in the Power Management menu.

Q8: If the image isn't clear

- A: Check that the lens is clear or not, if not, clean with the soft cloth.

Q9: If the mobile moves slowly

- A: The camera needs some light when gathering the data and the speed will be slow if the light condition isn't good. Please adjust the screen position of the Notebook PC or the position of the user.

The image display also shall be slower by the heavy loading for the system when the many applications are running. Please close the unused procedure.

Note:

Q8 and Q9 are the questions when you are using the camera for video capture, conferencing, and chatting.

11-2 Specifications

Main Feature	
CPU	Intel Atom N270 (1.6GHz, 533MHz FSB)
CPU Power Consumption	2.5W MAX
L1 Cache Size	On-die, primary 32-kB instructions cache and 24-kB, write-back data cache
L2 Cache Size	512-kB on-die second level cache
Memory (#)	512M/1GB/2GB
Memory Type	DDRII 533/667/800 MHz
Storage	
HDD Capacities (#)	160GB (Max 250GB)
TFT Screen	
TFT Screen Size	10" inch
Screen Type	TFT
Description	TFT LCD 1024X600 (WSVGA)
Built-in Camera	
Resolution	0.3M Pixels
Bluetooth	
Specification	V2.1+EDR
Video/Audio Feature	
Video Card Type	Intel GMA 950

Video Card Capacity	Share Dynamic EMS Memory 128MB(Max)
Audio System	Built-in speaker
Sound Card Type	HD Codec
I/O Device	
Mouse	Touch Pad
Keyboard	U.S 82-key keyboard
Condition	
Operating Temperature	5-35℃
Operating Humidity	35%-85%
Storage Temperature	-20-55℃
Storage Humidity	20%-93%
Power	
Adapter	AC 100~240V; DC 12V
Output Power (maximum)	≤36W
Battery (Type)	Lithium rechargeable battery
Voltage	7.4V
Port Standard	
LAN	LAN Type: 10/100Base-T Wireless Card: 802.11 b/g
Audio Port	Headphone Port, Speaker, Built-in Microphone, Microphone Port
USB Port	USB-A Port(x2), USB2.0

SD Card Port	Support SD/MMC/MS Card	
VGA Port	D-15 Output	
Physical Features		
Weight	No battery	About 0.9Kg
	With battery	About 1.1Kg
Dimension	266*182*27mm	



Design and specifications are subject to change without notice. The # symbol means that the item is optional.