

# **WIFI-9002**

**MALATA**

**User's Manual**

**Part Name: 802.11b/g/n Wireless Model**

**Part No.: WIFI-9002**

**Version: V1.0**

## Revision History

Release	Date	Revision	Initials
1.0	2009-11-14	Initial release	JY

**Notice for the USA FCC Part 15:**

This equipment has been tested and found to comply with the limits for a Class B digital device, pursuant to Part 15 of the FCC Rules.

These limits are designed to provide reasonable protection against harmful interference in a residential installation.

This equipment generates, uses and can radiate radio frequency energy. However, there is no guarantee that interference will not occur in a particular installation. If this equipment does cause harmful interference to radio or reception, which can be determined by turning the equipment off and on, the user is encouraged to try to correct the interference by one or more of the following measures:

- Reorient or relocate the receiving antenna.
- Increase the separation between the equipment and receiver.
- Connect the equipment into an outlet on a circuit different from that to which the receiver is connected.
- Consult the dealer or an experienced technician for help.

This device complies with part 15 of the FCC Rules. Operation is subject to the following two conditions:

- 1) This device may not cause harmful interference, and
- 2) This device must accept any interference received, including interference that may cause undesired operation.

**MODIFICATION:** Any changes or modifications not expressly approved by the grantee of this device could void the user's authority to operate the device.

**CAUTION:**

- 1) To comply with the limits of the Class B digital device, pursuant to Part 15 of the FCC Rules, this device is comply with Class B limits. All peripherals must be shielded and grounded. Operation with non-certified peripherals or non-shielded cables may results in interference to radio or reception.
- 2) This Transmitter must not be co-located or operating in conjunction with any other antenna or transmitter.
- 3) For product available in the USA market, only channel 1~11 can be operated. Selection of other channels is not possible.

**IMPORTANT NOTE:**

- 1) This module is intended for OEM integrator. The OEM integrator is still responsible for the FCC compliance requirement of the end product, which integrates this module.
- 2) 20cm minimum distance has to be able to maintained between the antenna and the users for the host this module is integrated into. Under such configuration, the FCC radiation exposure limites set forth for an population/uncontrolled environment can be satisfied.
- 3) Any changes or modifications not expressly approved by the manufacturer could void the user's authority to operate this equipment.

**USERS MANUAL OF THE END PRODUCT:**

In the users manual of the end product, the end user has to be informed to keep at least 20cm separation with the antenna while this end product is installed and operated. The end user has to be informed that the FCC radio-frequency exposure guidelines for an uncontrolled environment can be satisfied. The end user has to also be informed that any changes or modifications not expressly approved by the manufacturer could void that user's authority to operate this equipment. If the size of the end product is smaller than 8\*10cm, then additional FCC part 15.19 statement is required to be available in the user's manual:

This device complies with Part 15 of FCC rules. Operation is subject to the following two conditions:

- (1) this device may not cause harmful interference and
- (2) this device must accept any interference received, including interference that may cause undersired operation.

**LABEL OF THE END PRODUCT:**

The final end product must be labeled in a visible area with the following " Contains FCC ID: SMFWIFI9002 ". If the size of the end product is larger than 8\*10cm, then the following FCC part 15.19 statement has to also be available on the label: This device complies with Part 15 of FCC rules.

Operation is subject to the following two conditions:

- (1) this device may not cause harmful interference and
- (2) this device must accept any interference received, including interference that may cause undersired operation.

If the above two sentences can't show on product body due to product size or label size, it could be put into the end product user manual.

## Table of Contents

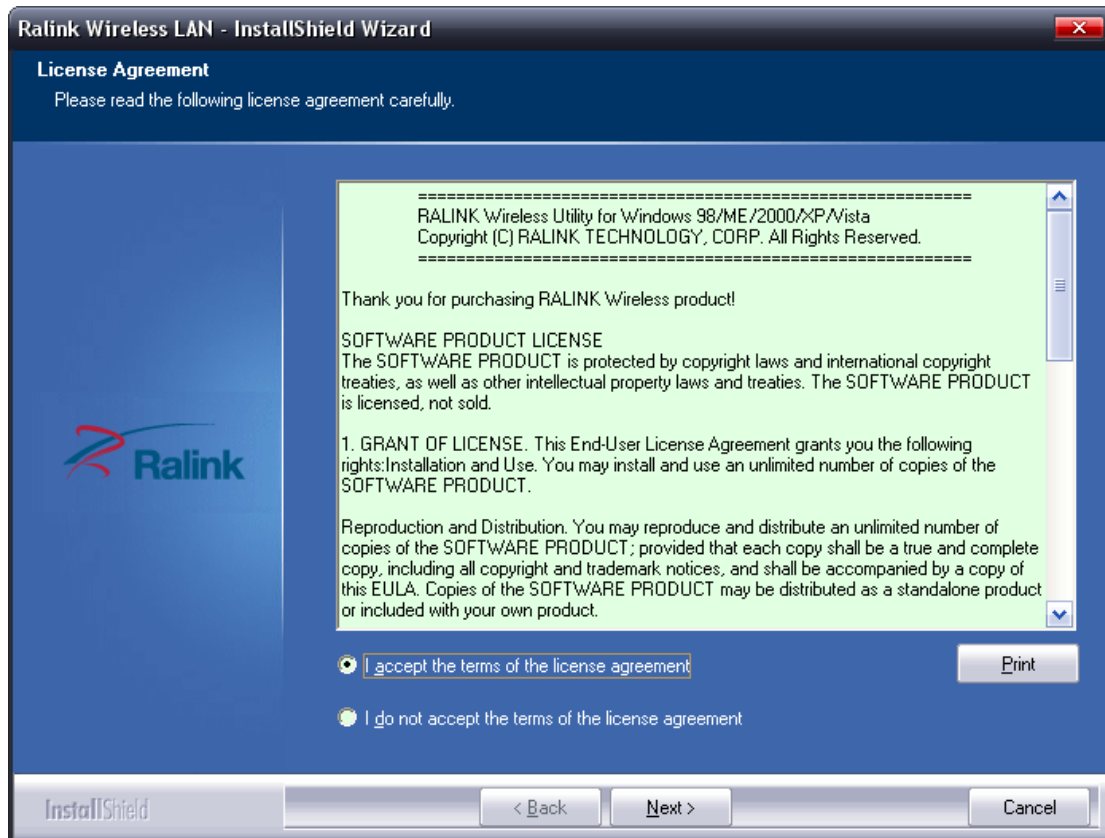
<b>1. INSTALL THE DRIVER-----</b>	<b>4</b>
<b>2.CONNECT-----</b>	<b>6</b>
<b>3.MAKE CONNECTION-----</b>	<b>7</b>
<b>4.UNINSTALL THE DRIVER-----</b>	<b>12</b>

# 1. Install the driver

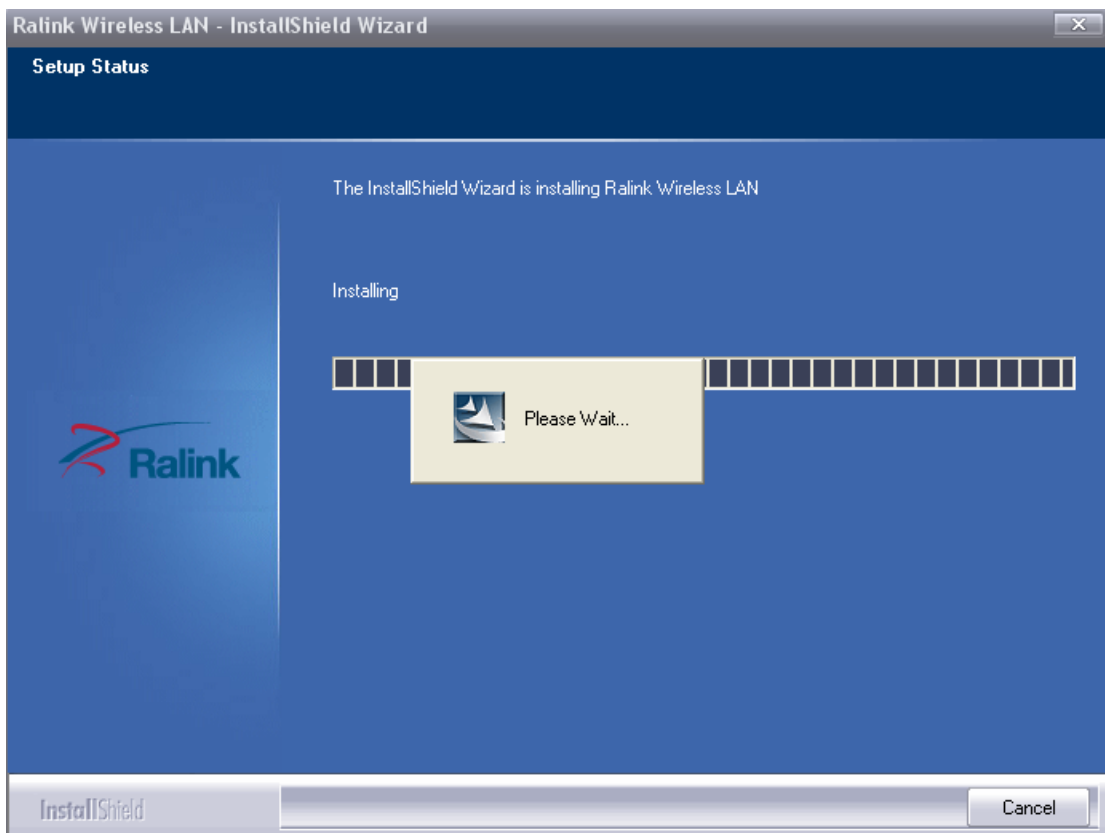
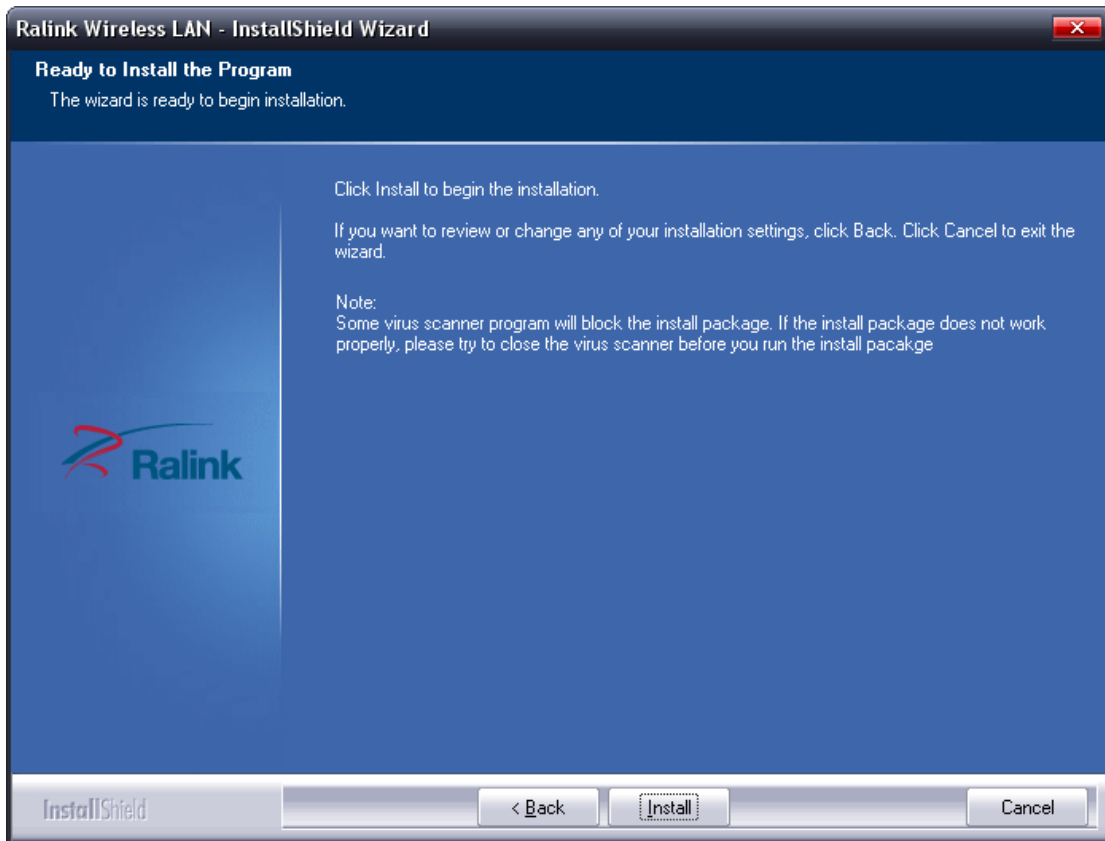
**Step1** Insert the installation CD into your CD-ROM driver, Double click the

icon  to start setup.

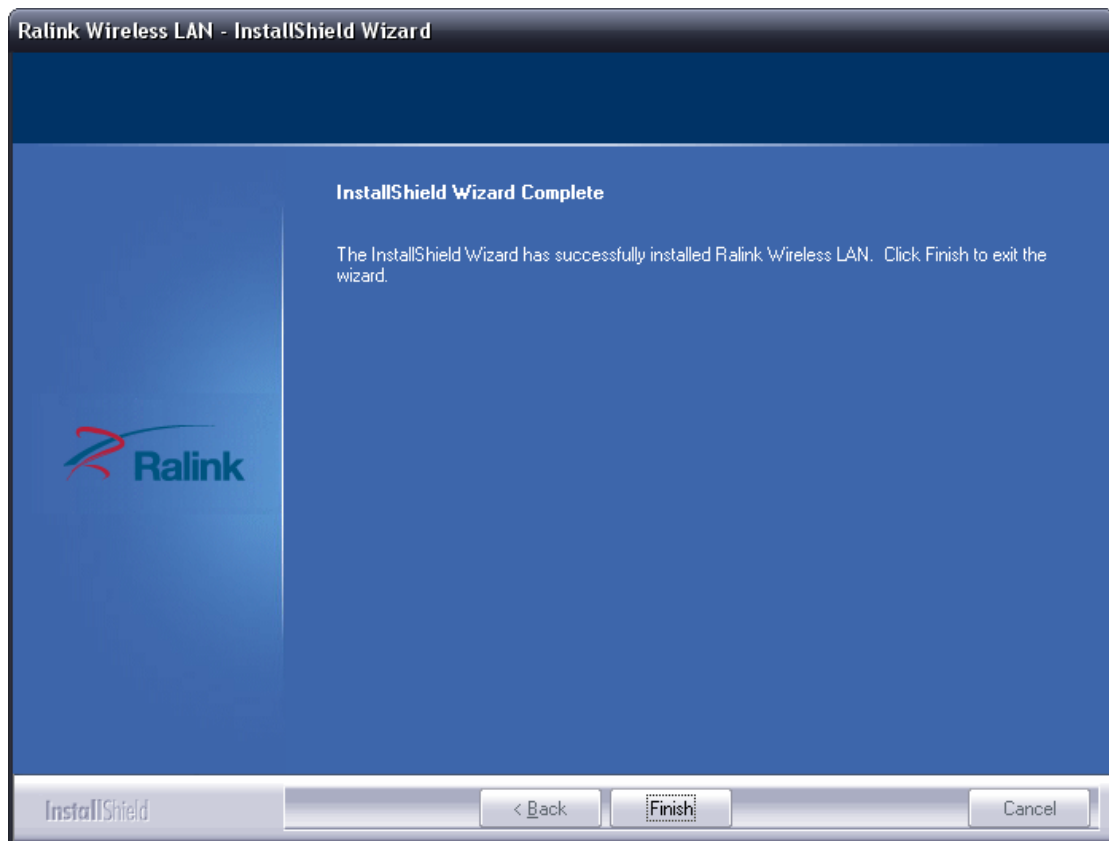
**Step2** Choose *I accept the terms of the license agreement* and click *next* to go on.



**Step3** Click *Install* to begin the setup.



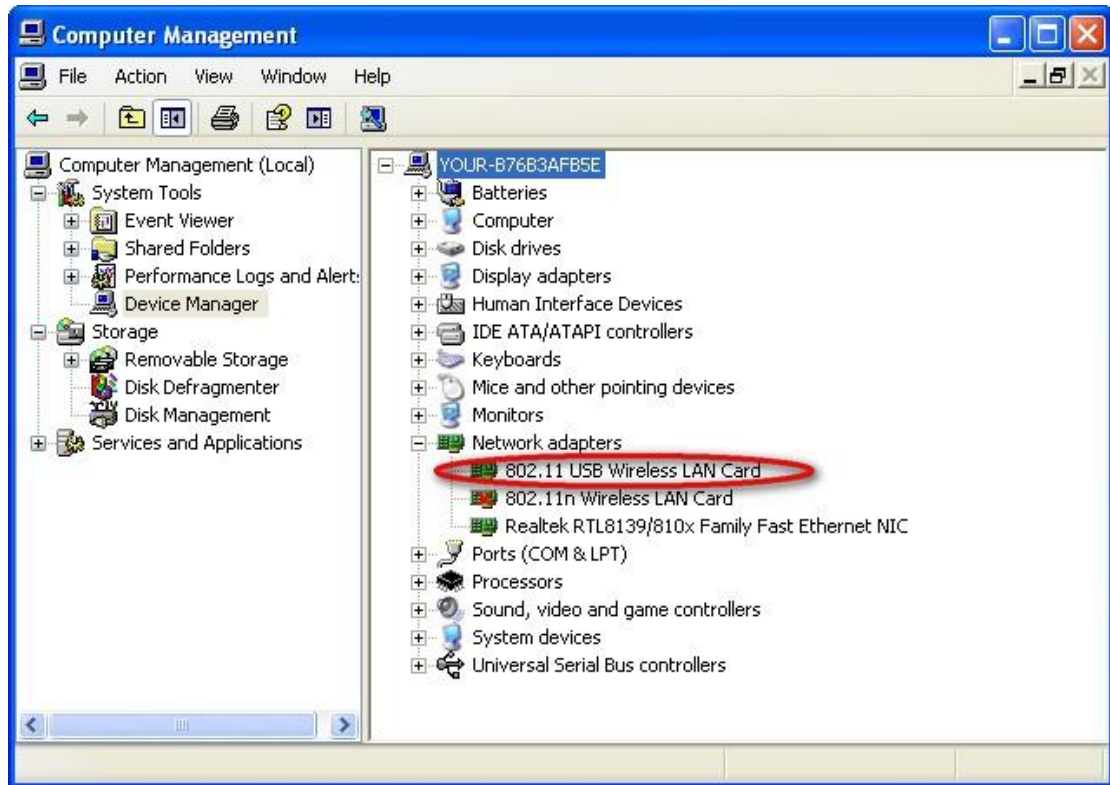
**Step4** Click **Finish** to complete the setup.



## 2. connect

Plug in your usb wireless LAN adapter, it will be recognized and auto installed. Just confirmed it like below:



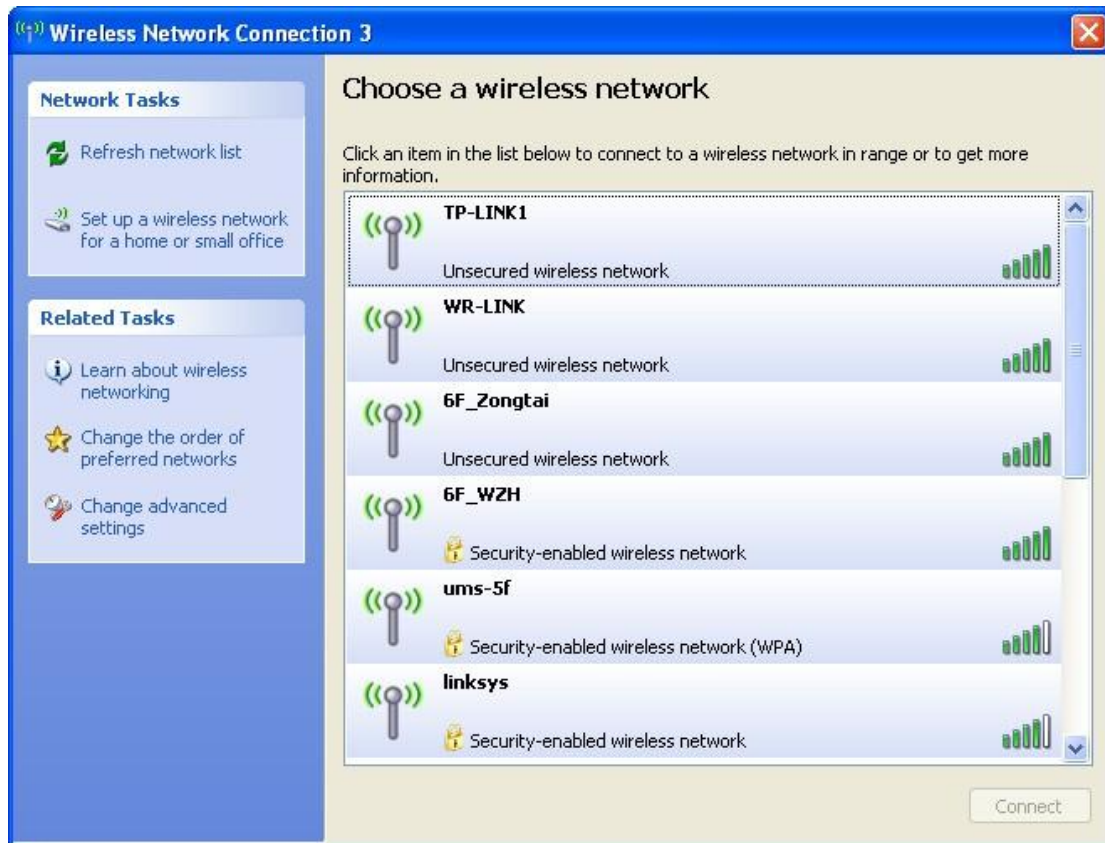


### 3. Make connection

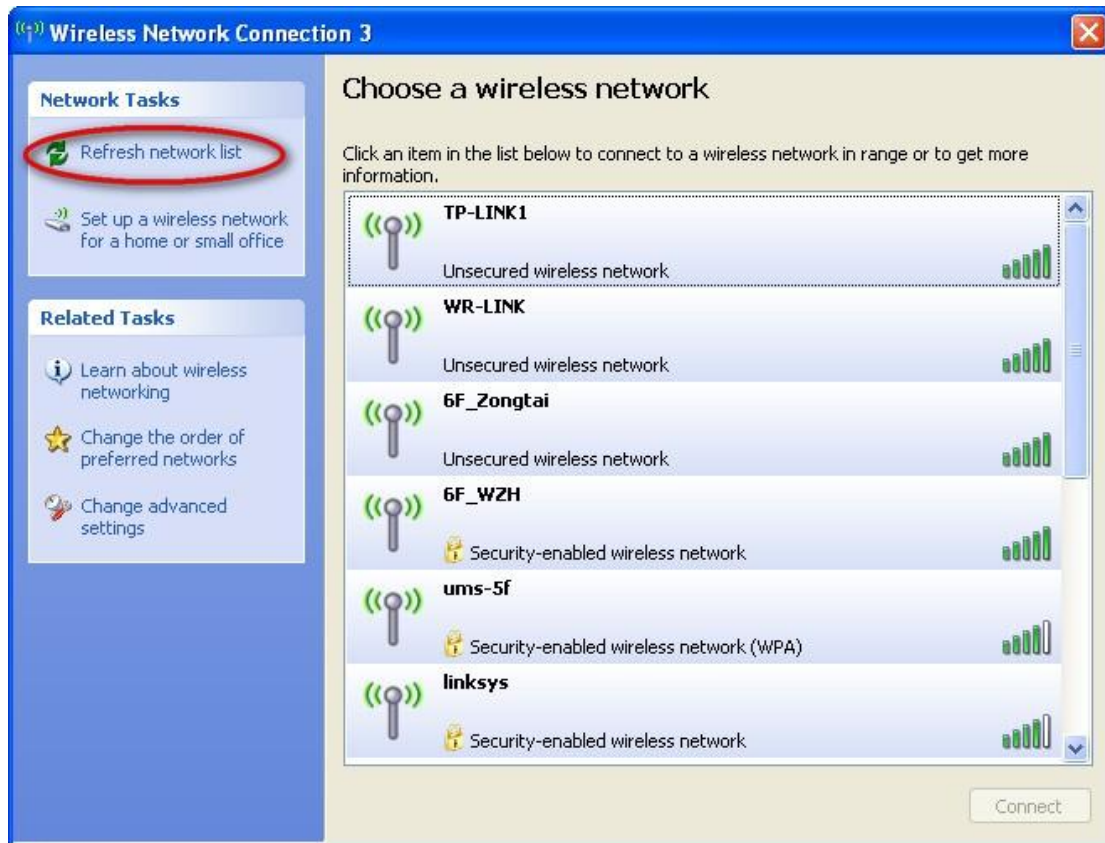
Double click the icon



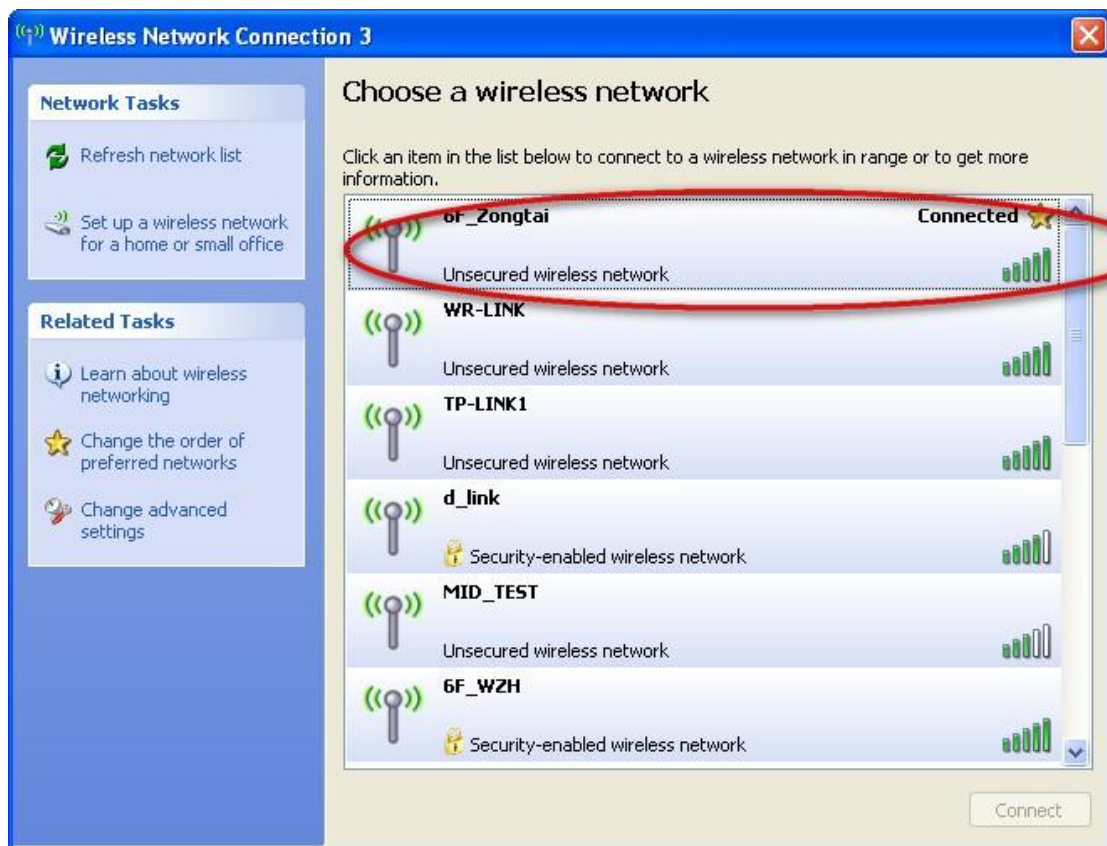
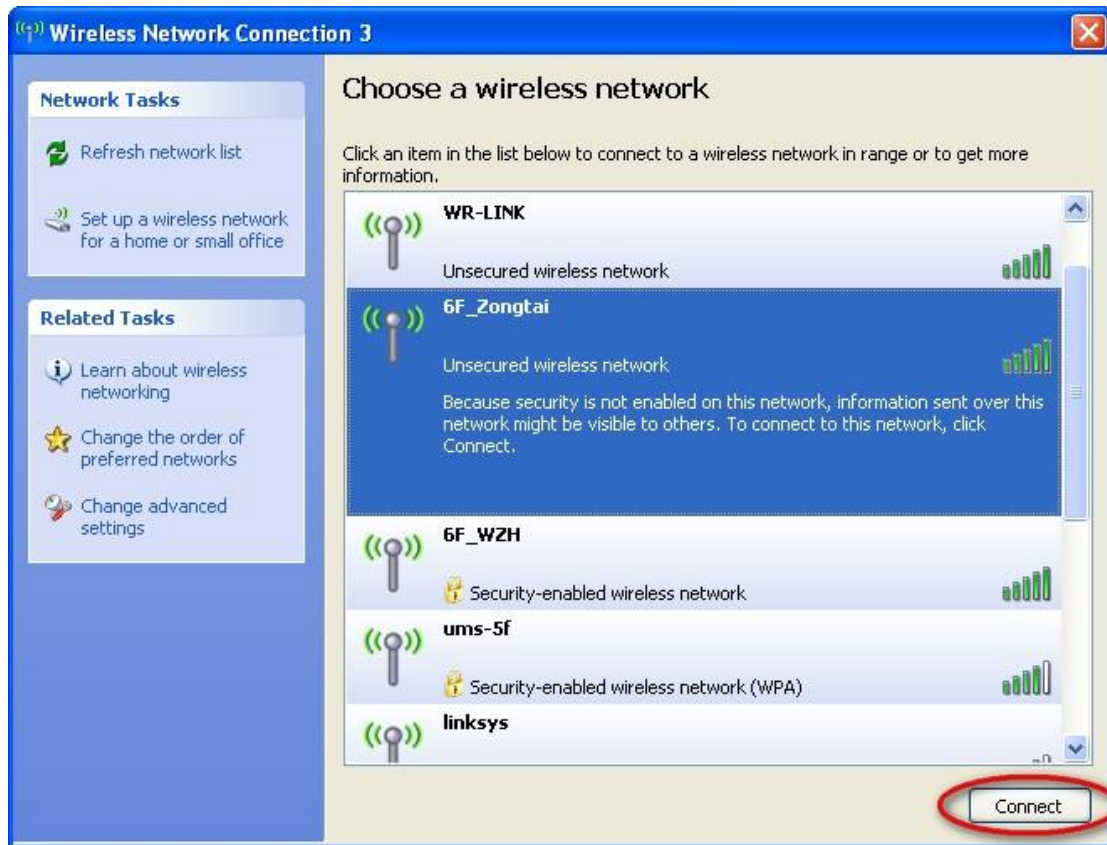
You will see:



You can click the button **Refresh network list** to find which AP is in range, they will show on the window.

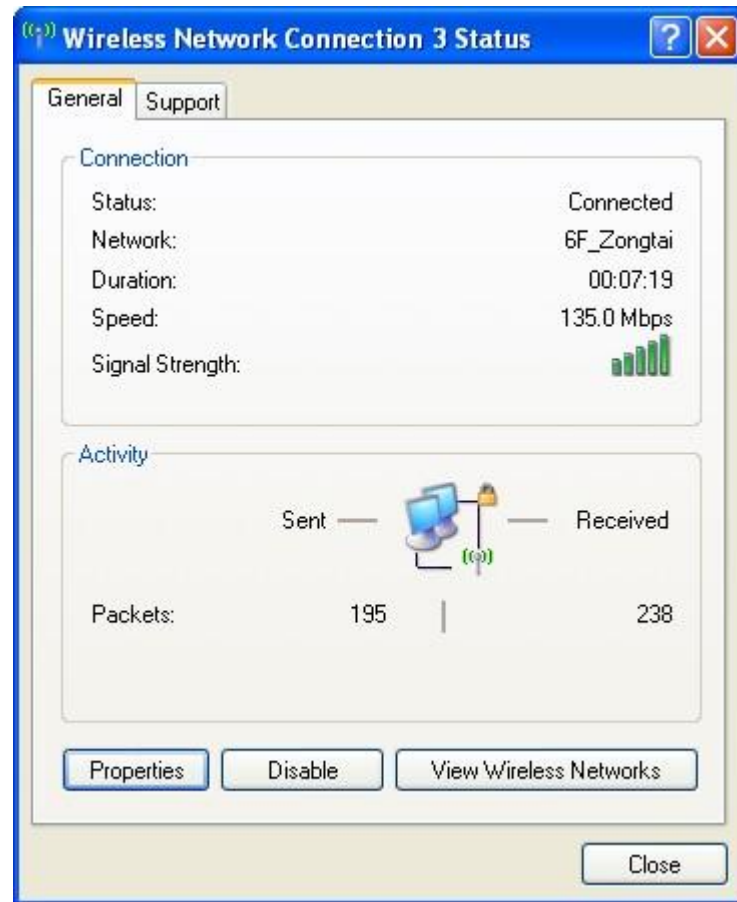


Choose one you want to connect, and click the button **connect** to finish the connection. An infrastructure connection is completed.

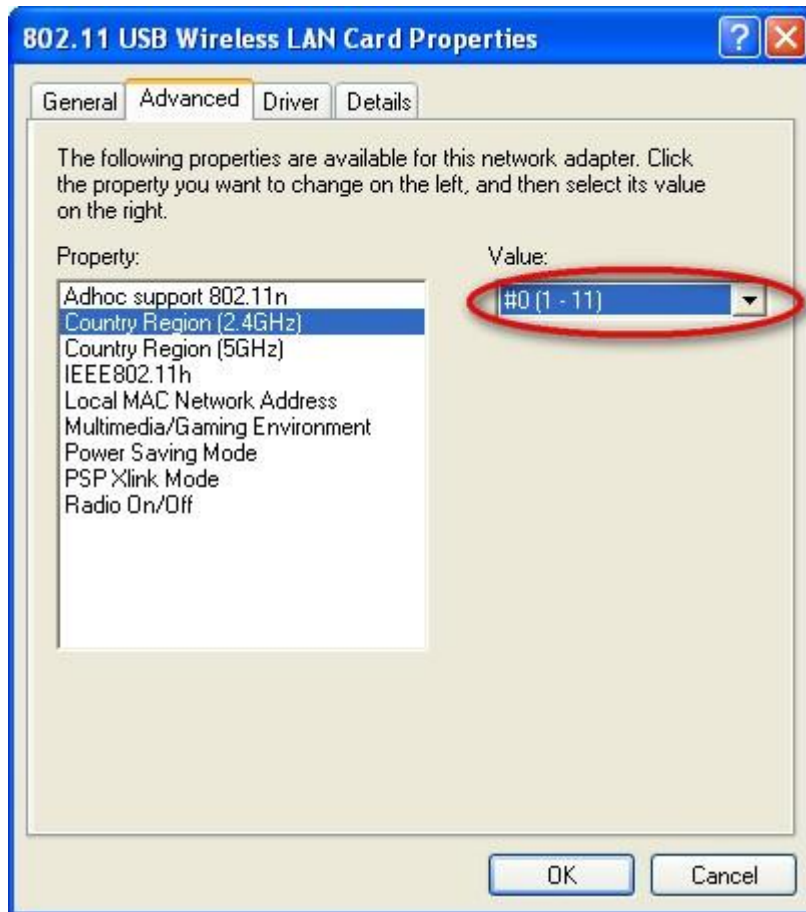


Double click the icon  10:13 AM

You will see the Wireless Network Connection Status



**Note:** please choose correct channel setting up to your law. For example, ch13 is permitted in your country, and you set your router at ch13, while you choose ch1ch11 (default setting), you will never find the AP. So you should have to choose ch1ch13 in Advanced page as below.

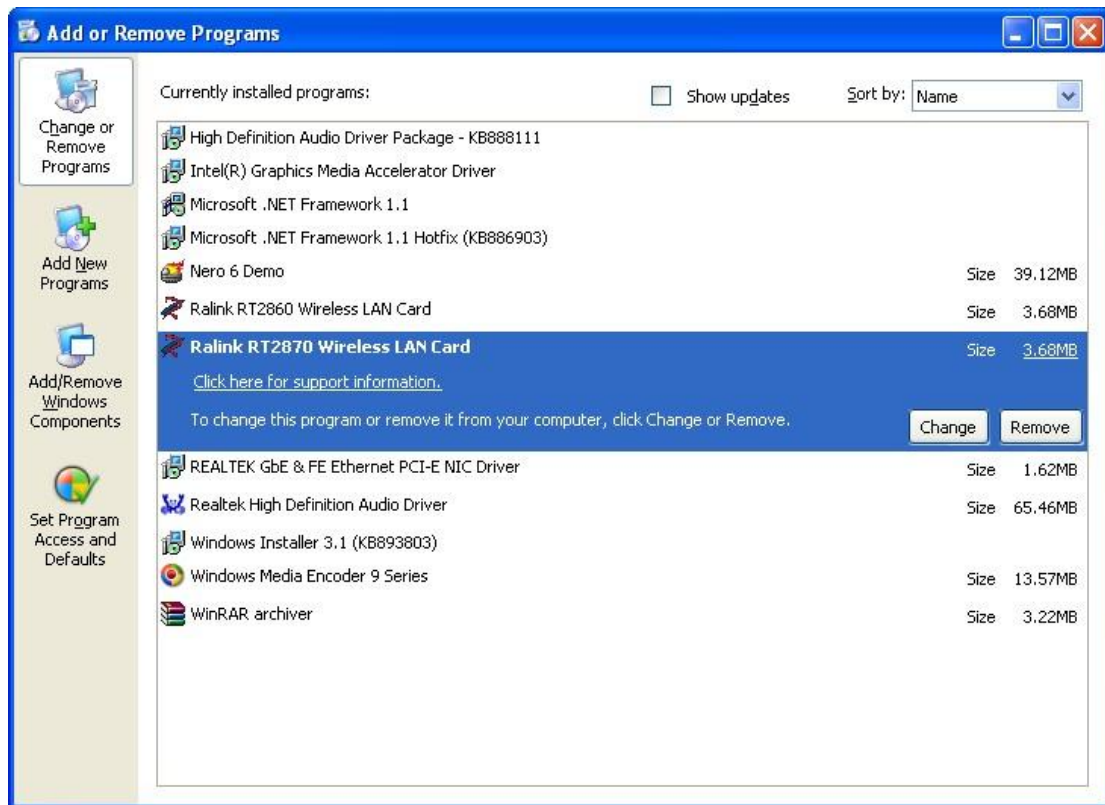


#### 4. Uninstall the driver

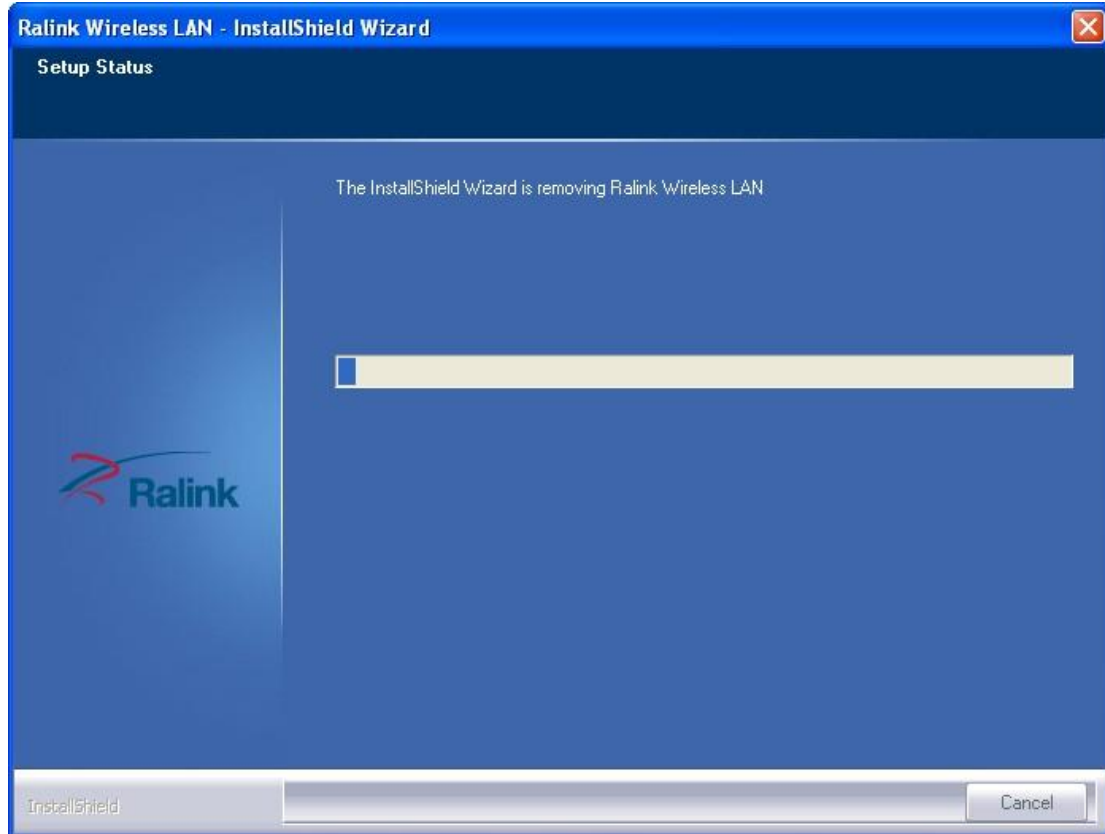
In the case you need to uninstall the driver, please refer to the follow steps.

**Step1** Go to Start –Control Panel-Add or Remove Programs





**Step2** Select Ralink RT2870 Wireless LANCard, and click the button **Remove**



**Step3** Click the button *Finish* to complete the uninstallation.

