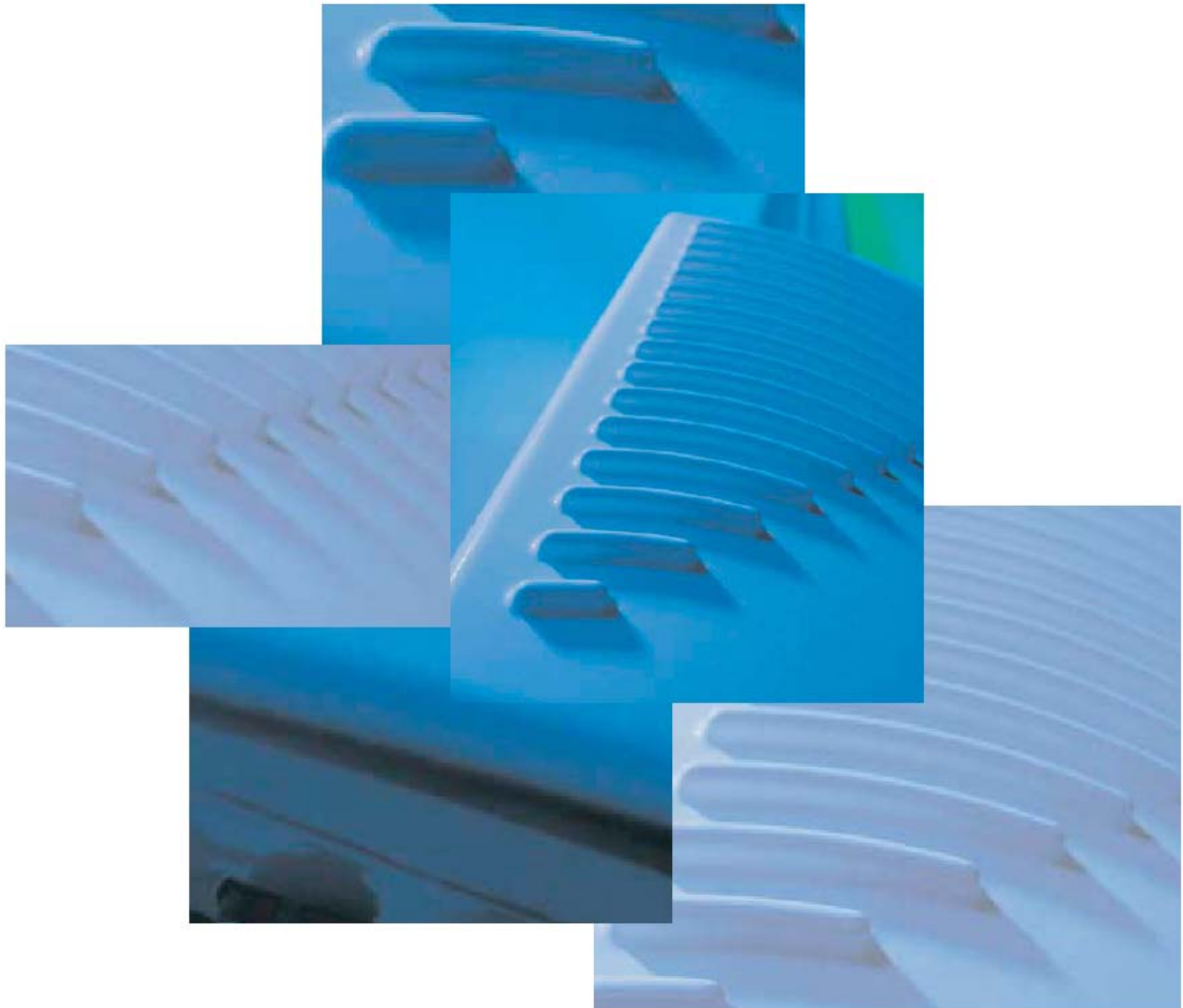




**SPEEDLAN 9200, PROFESSIONAL INSTALLATION
GUIDELINES USER GUIDE ADDENDUM**



ADDITION TO 34357-MNL (FOR SPEEDLAN 9200, 2.4/5.8/4.9)

Table of Contents:

[1. Background Information on the Installation of Speedlan 9200](#)2

[2. 2.4 GHz SPEEDLAN 9200 Installation Requirements](#)2

[3. 5.8 GHz SPEEDLAN 9200 Installation Requirements](#)3

[4. 4.9 GHz SPEEDLAN 9200 Requirements](#)3

1. Background Information on the Installation of Speedlan 9200

Wave Wireless requires a Professional Installer to install the Speedlan 9200 product

The Speedlan 9200 was tested for compliance to the Federal Communication Commission (FCC) rules part 15.247 and the testing results indicated the need for some special guidelines for the Professional Installer to follow when installing the Speedlan 9200.

2. 2.4 GHz SPEEDLAN 9200 Installation Requirements

The installer is to follow the diagram in Figure 2-5 of the Speedlan 9200 User guide, Wave Wireless part number 34357-MNL.

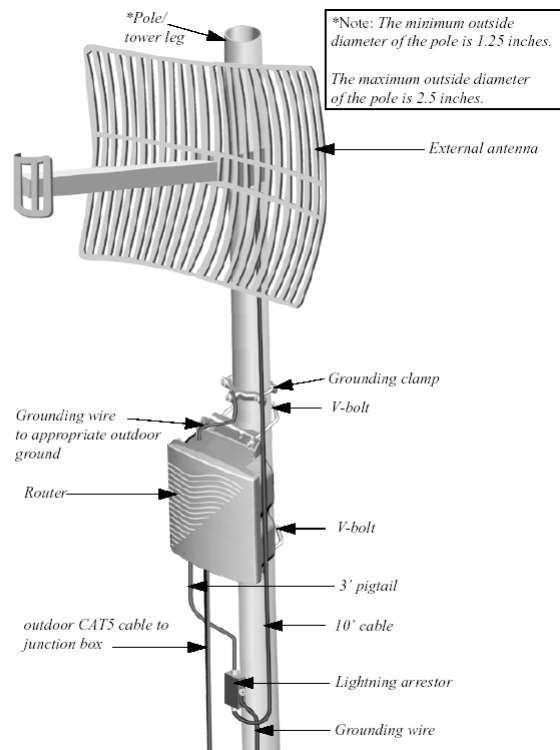


Figure 2-5: SPEEDLAN 9200 installation

3. 2.4 GHz SPEEDLAN 9200 Installation Requirements

The professional installer must follow the following guidelines in table 1 when installing the SPEEDLAN 9200 at 2.4 GHz.

| Antenna Type | (802.11g), MAX TXPO Setting: |
|------------------------|---|
| 24 dBi, Parabolic Grid | +17 dBm, except +15 dBm on Channel 11 |
| 16 dBi, 90° Sector | +17 dBm, except +14 dBm on Channel 1 & 11 |
| 15 dBi, Yagi | +17 dBm, except +13 dBm on Channel 1 & 11 |
| 12 dBi OMNI | +17 dBm, except +15 dBm on Channel 1 & 11 |
| 8 dBi Patch | +17 dBm, except +15 dBm on Channel 1 and +17 dBm, except +14 dBm on Channel 11 |

For 802.11b, +17 dBm no TXPO restrictions

4. 5.8 GHz SPEEDLAN 9200 Installation Requirements

The professional installer must follow the following guidelines in table 1 when installing the SPEEDLAN 9200 at 5.8 GHz

| Antenna Type | (802.11a), MAX TXPO Setting: |
|----------------------------|---|
| 29 dBi, Parabolic Grid | +17 dBm, Band-Stop or Band Pass filter required before Antenna |
| 23 dBi, Panel | +17 dBm, Band-Stop or Band Pass filter required before Antenna |
| 17 dBi, Backfire Parabolic | +17 dBm, no restrictions |
| 16 dBi, 120° Sector | +17 dBm, no restrictions |
| 8 dBi OMNI | +17 dBm, no restrictions |

The installer is to follow the diagram in Figure 2-5 of the Speedlan 9200 User guide, Wave Wireless part number 34357-MNL. The filter is to installed directly on the antenna or in line with the lightning arrestor

5. 4.9 GHz SPEEDLAN 9200 Requirements

The professional installer must follow the following guidelines in table 1 when installing the SPEEDLAN 9200 at 4.9 GHz:

4.9 GHz complies with Part 90, Subpart Y,

As per 90.1215, the maximum antenna gain 9dBi for OMNI antennas. The maximum antenna gain is 26 dBi for directional antennas used in Point-to-Point or Point-to-Multipoint.

For each dB increase in antenna gain over the above stated values, the transmit power must be reduced correspondingly