



**BT-2000**

Bluetooth Phone-Audio-USB Dongle

# User's Manual

**BT-2000** Bluetooth Phone & Audio & USB Dongle



## Note

"Changes or modifications not expressly approved by the party responsible for compliance could void the user's authority to operate the equipment."

"This device and its antenna must not be co - located or operating in conjunction with any other antenna or transmitter."

# Before Getting Started

Cautions in Use

**BT-2000**

Bluetooth Phone·Audio·USB Dongle



## Features

BT-2000 is a multi - functional Bluetooth Dongle for non-Bluetooth Mobile Phone, PC, PDA, MP3 (MPEG4), TV, and Mini-Component with Audio Jack (Both 2.5mm and 3.5mm earphone jack provided). This BT-2000 adopted Bluetooth spec. 1.2 so that it improves sound quality, supports fast connection to the other Bluetooth devices and enables users to pair each of different Bluetooth devices. However, it supports mono sounds in case corresponding devices have mono soundtracks.



## Enclosures

### <Gender Cable>



BT-2000



Gender Cable for  
Mobile Phone  
(4 Pole, 2.5mm)



Gender Cable for  
MP3 Player/PDA  
(3 Pole, 3.5mm)



USB  
Cable



User's  
Manual

### <Optional>

#### Gender Cable for...



Earphone &  
MIC of the PC  
(3 Pole, 3.5mm)



Old-fashioned  
Mobile phone  
(3 Pole, 2.5mm)



Mobile  
phone  
(10 Pole, 12 Pole)



## Connecting gender cable to the other products



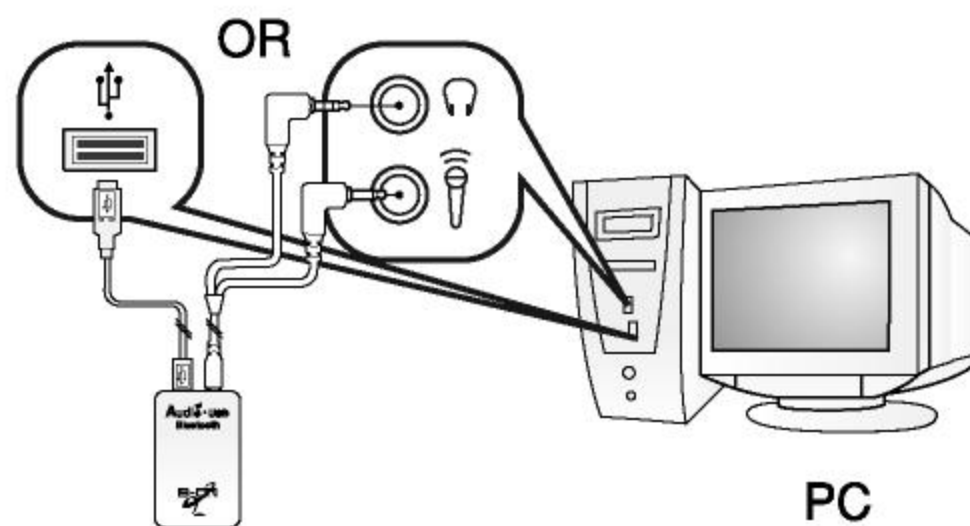
Mobile Phone

Gender Cable with  
<4 Pole, 2.5mm>



MP3 Player

Gender Cable with  
<3 Pole, 3.5mm>



PC

Gender Cable with  
<3 Pole, 3.5mm>

# Before Getting Started

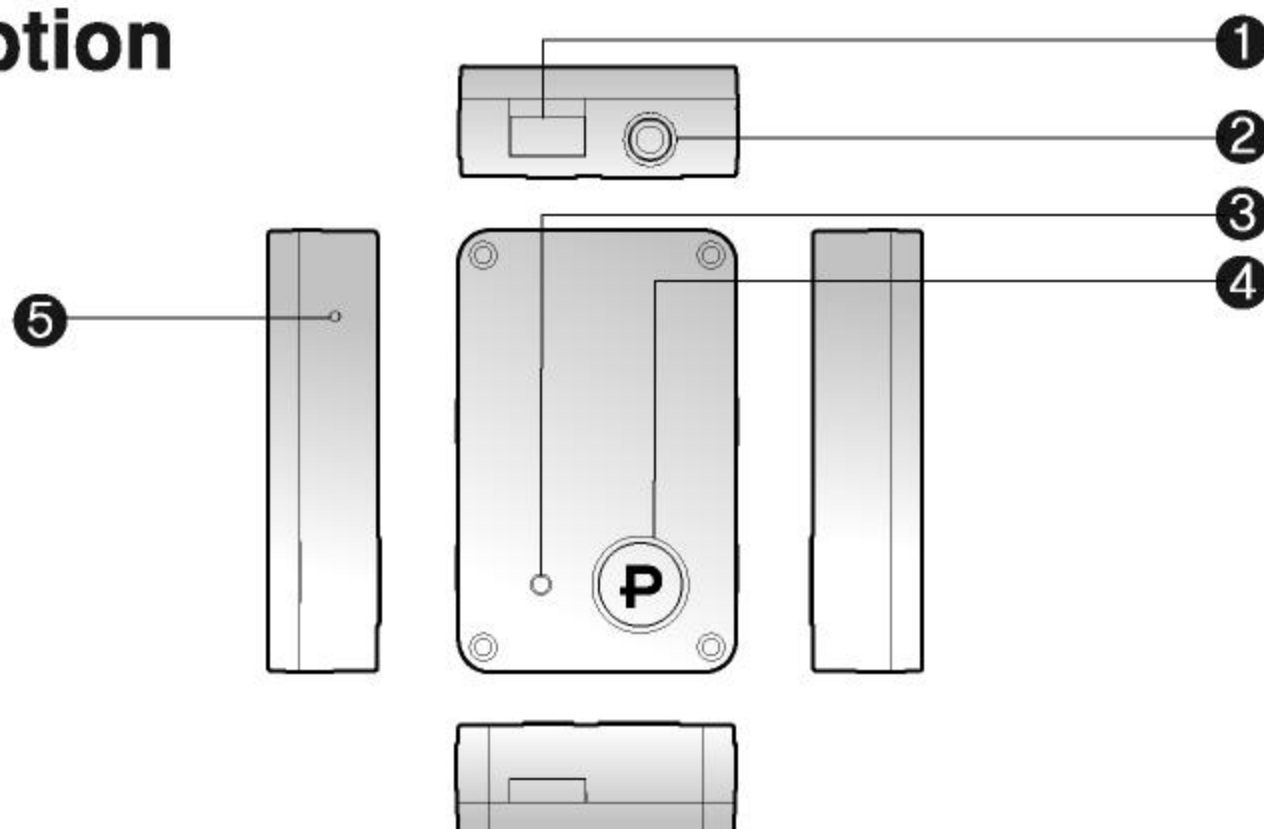
Cautions in Use

**BT-2000**

Bluetooth Phone·Audio·USB Dongle



## Description



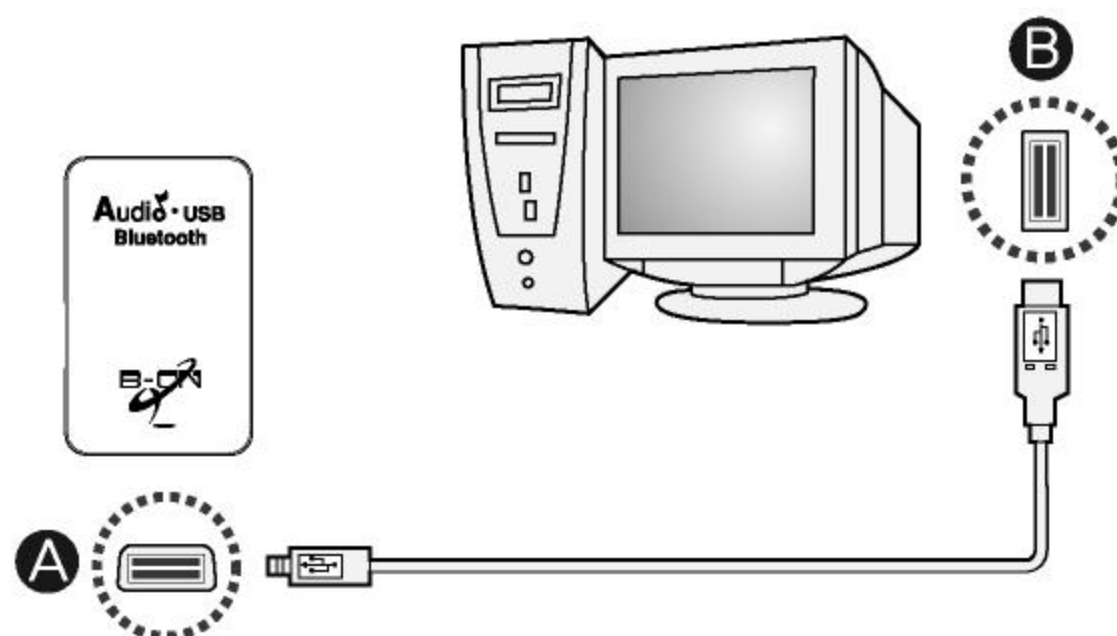
- 1. USB Port (Charging)
- 2. Gender Cable Jack
- 3. LED : Indicator Light

- 4. P : Power On / Power Off / Pairing
- 5. RESET



## Charging the battery

- 1. Connect BT-2000's USB Port (A) to PC's USB Port (B).
- 2. During charging, BT-2000 indicator light flashes red, and when finished charging, indicator light goes out.
- 3. When the red LED indicator light turns off, disconnect BT-2000's USB Port from PC's USB Port (B).



## <Charging time>

It usually takes approximately 1 hour to fully recharge the BT-2000 battery.

## <Low Battery>

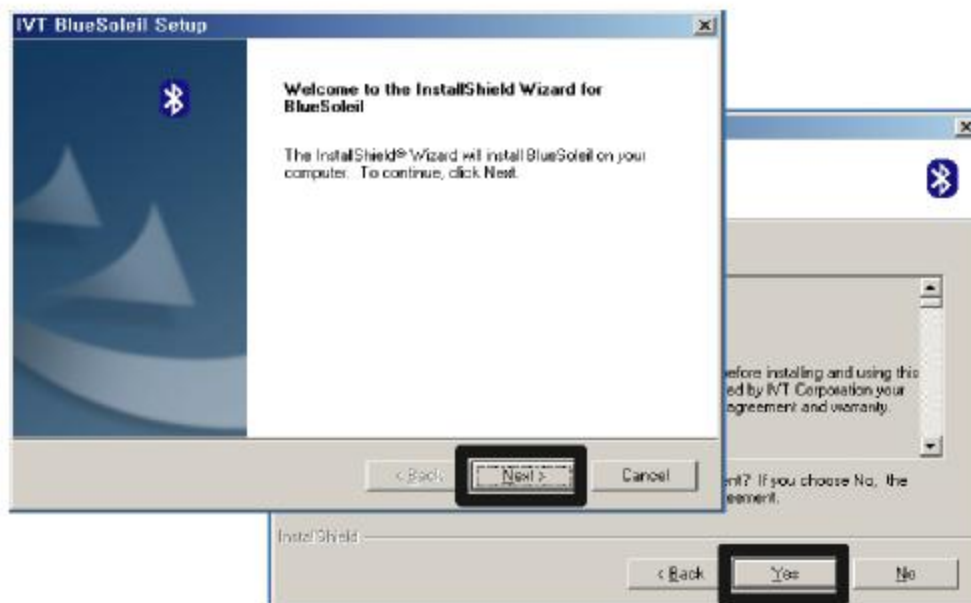
When the battery becomes low, the red LED indicator turns on. Please recharge the battery.



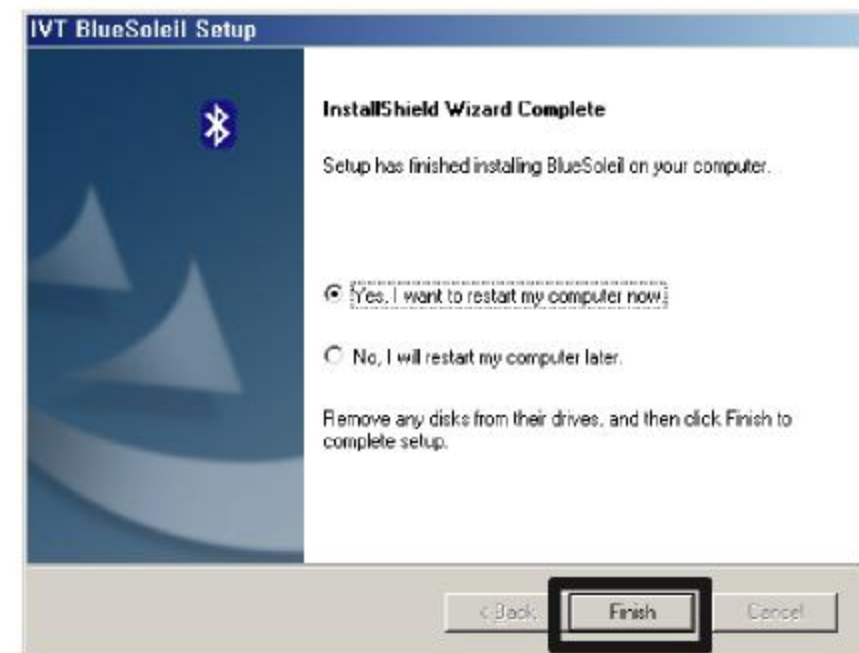


## Setting up BlueSoleil program (For USB Dongle users)

1. Access IVT Corporation Homepage ([www.ivtcorporation.com](http://www.ivtcorporation.com)) to download updated version of BlueSoleil program once. Double click on the "BlueSoleil" icon to install.



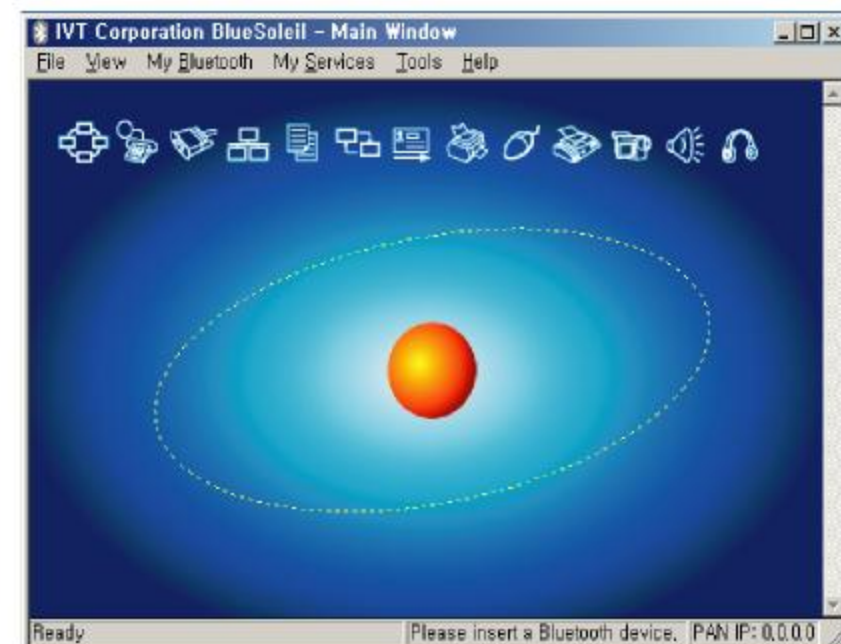
2. You need to reboot your PC after the installation.



3. After installing, there is 'BlueSoleil' shortcut icon on the Windows desktop and 'BlueSoleil' icon will be displayed at the bottom right corner of the Windows desktop.



4. The BlueSoleil Main Window will appear as below after double clicking on 'BlueSoleil' icon.







## Pairing BT-2000 with the Bluetooth Headset



There are three Bluetooth dongle functions of BT-2000 as below.

### <Pairing BT-2000 with Bluetooth Headset as Audio & Phone Dongle Mode at the same time>


- 1) Set up Bluetooth headset(BT-1000) as a standby mode to pair it with BT-2000 once.  
(Refer to page 8<Pairing the BT-1000>)
- 2) Press and hold  button until the LED indicator blinks blue and red in turns.  
This is Audio Dongle Mode.
- 3) Press and hold  button again.
- 4) After pairing, the blue LED indicator will blink two times with five-second interval.

**Notice** You don't need to pair BT-2000 with Bluetooth headset (BT-1000 or the others) again when connecting for each other. Please just turn it on if you have already paired once.

### <Pairing BT-2000 with Bluetooth Headset as Phone Dongle Mode only>

1. Set up Bluetooth headset as a standby mode to pair with it BT-2000 once.  
(Refer to page 8<Pairing the BT-1000>)
2. Press and hold  button until the LED indicator flashes blue. This is Phone Dongle Mode.
3. Press and hold  button again.
4. After pairing, the blue LED indicator will blink two times with five-second interval.

### <Pairing BT-2000 with Bluetooth Headset as USB Dongle Mode only>



1. Connect USB Cable to PC's USB slot.
2. Execute BlueSoleil program. (Refer to page no. 15 <Setting up BlueSoleil program (For USB Dongle users)>)
3. Press and hold  button until LED indicator flashes purple or blue.
4. Set up Bluetooth headset (BT-1000 or the others) as a standby mode to pair it with BT-2000 once.(Refer to page 8<Pairing the BT-1000>)
5. Pair Bluetooth headset (BT-1000 or the others) with BT-2000.(Refer to page no. 17<Pairing BT-2000 with Bluetooth Headset by BlueSoleil program>)

**Notice** You don't need to enter Bluetooth Passkey again when connecting BT-2000 with Bluetooth Soleil program later if you have already paired once.



## Power On & Power Off

### <Power On>

1. Using Audio & Phone Dongle Mode at the same time: Press and hold the  button until the LED indicator flashes blue and red in turn.
2. Using Phone Dongle Mode only: Press and hold the  button until the LED indicator.





flashes blue.

- Using USB Dongle Mode only: After connecting USB cable to PC, press and hold **(P)** button until the LED indicator flashes purple or blue.

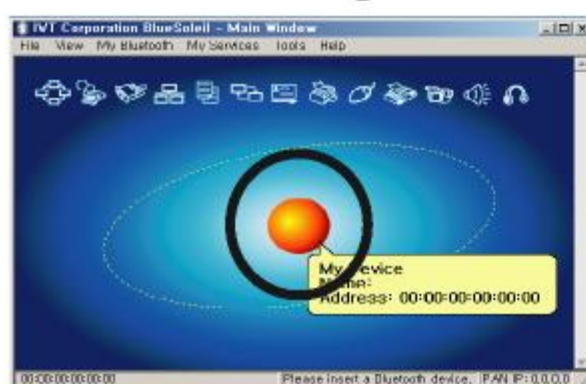
### <Power Off>

- Using Audio & Phone Dongle Mode at the same time: Press and hold **(P)** button until the LED indicator flashes red.
- Using Phone Dongle Mode only: Press and hold **(P)** button until the LED indicator flashes red.
- Using USB Dongle Mode only: Just disconnect USB cable from PC to turn it off.

### <Pairing BT-2000 with Bluetooth Headset by BlueSoleil program>

- Please double click on BlueSoleil' shortcut icon on the Windows desktop first. And double-click to 'My Device icon' or 'Center icon ball' to search for surrounding Bluetooth devices.

(Figure 1)



**Notice** 'My Device icon' or 'Center icon ball' This icon represents the client computer. It is called the 'My Device icon' or Center icon ball' in this user manual. (Figure 1)

- You may right-click on the connected Bluetooth device(BT-1000 or the others), select Connect and highlight the service you want to use. And then, double click the remote Bluetooth device you want to connect and you will be asked to enter the Bluetooth Passkey. Please type the Bluetooth Passkey, '0000' in the Passkey field.(Figure 3)

(Figure 3)



- The Bluetooth headset(BT-1000 or the others), one of 'Remote Bluetooth Devices' will appear around the 'My Device icon' as below. And, connectable icon will be yellow when double-click to Bluetooth headset.(BT-1000) (Figure 2)

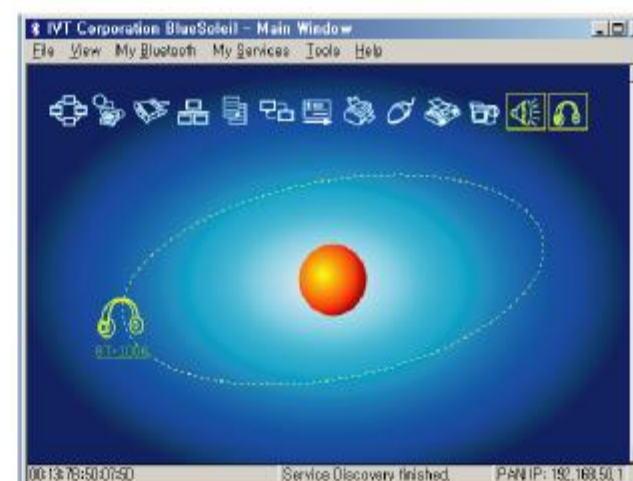
(Figure 2)



**Notice** Remote Bluetooth Device The icons(  ,  ) represents 'Remote Bluetooth Devices' around the 'My Device icon'.

- If the pairing process for <Audio / Video Service> succeeds, the beep sound is heard. (In case of <Bluetooth Headset Service>, press **(P)** button when the beep sound is heard.)

(Figure 4)





**<Audio/ Video Service>**

Listening to music files in the PC

**<Bluetooth Headset Service>**

Talking over the PC(via Skype) or Bluetooth Mobile Phone

**<Stop a Bluetooth Service Connection>**

Select a started service and right click the service. On the popup menu, select Stop Service. The service icon turns white. The service is stopped.




**Using BT-2000 as Audio & Phone Dongle Mode at the same time**

Users can listen to the music files from non-Bluetooth Audio devices by wireless. Also, during listening to the music files, you can receive a incoming call and talk over the phone by switching mode from Audio Dongle to Phone Dongle.




**<Listening to the music>**

Users can listen to the music files after pairing BT-2000 with Bluetooth headset (BT-1000 or the others).

**<Talking over the Mobile Phone during playback>**

1. Press  button on the Bluetooth headset (BT-1000) when receiving a incoming call from mobile phone applied MP3 Player function during listening to the music files on the mobile phone.
2. If you press  button on the Bluetooth headset (BT-1000) to stop talking or caller hangs up by himself/herself, music sound is heard automatically. However, this soundtrack is mono sound, not stereo sound then. Therefore, you need to press  button on the Bluetooth headset (BT-1000) briefly to change sound from mono to stereo.

**<Last Number Redialing>**

1. Press  button on the Bluetooth headset (BT-1000) briefly.
2. If you press  button on the Bluetooth headset (BT-1000) to stop talking or caller hangs up by himself/herself, music sound is heard automatically. However, this soundtrack is mono sound, not stereo sound then. Therefore, you need to press  button on the Bluetooth headset (BT-1000) briefly to change sound from mono to stereo.

**Using BT-2000 as Phone Dongle Mode only**

Users can enjoy cord-free headset convenience with non-Bluetooth mobile phone.

**<Last Number Redialing>**





1. Press  button on the Bluetooth headset (BT-1000) briefly in standby mode.
2. Press  button on the Bluetooth headset (BT-1000) briefly stop talking.

**Notice** The users may need to press  button on the Bluetooth headset (BT-1000) two times according to specific types of mobile phone.

**<Receiving a Call>** 1. Press  button on the Bluetooth headset (BT-1000) briefly.



**Notice** This function is only available for ring mode on the mobile phone.






## Using BT-2000 as USB Dongle Mode only

After pairing BT-2000 with Bluetooth headset (BT-1000), users can listen to the music file from non-Bluetooth PC by connecting BT-2000 to USB slot. Also, users can talk over the PC via Skype remotely.



### <Listening to the music>

1. Pair BT-2000 with Bluetooth headset (BT-1000 or the others) after executing BlueSoleil program. (Refer to Pairing BT-2000 with Bluetooth Headset by BlueSoleil program)
2. Listen to the music files via Window Media Player or Winamp.
3. Users can select previous/next song by pressing ,  button on Bluetooth headset (BT-1000) briefly.

### <Stop / Pause / Play>

1. Stop: Press  button on the Bluetooth headset (BT-1000) briefly during playback.
2. Pause: Press  button on the Bluetooth headset (BT-1000) briefly during playback.
3. Play: Press  button on the Bluetooth headset (BT-1000) briefly to go back to playback mode.

### <Taking over the phone during playback>

1. Press  button on the Bluetooth headset (BT-1000) briefly when receiving a coming call.
2. Press  button on the Bluetooth headset (BT-1000) briefly to end a call.

### <Talking over the PC via internet (Sykpe)>

Access Skype Homepage ([www.skype.com](http://www.skype.com)) to download updated version of software program once. And, double click on the "SkypeSetup" icon to install.

### \*\* One-on-One Call

- 1) Connect green & pink jack of gender cable for PC only to each socket of PC.  
(Green jack of gender cable <-> Earphone socket of the PC | Pink jack of gender cable <-> MIC socket of the PC)





- 2) Log in with your Skype Name & Password.
- 3) Add your friend to your "Contact List", simply right-click the name from the search results and select "Add to Contacts".
- 4) Select a Skype Name and then click the "Call button" (📞) at the bottom of the window.
- 5) To end a call, click the "Cancel button" (📞).

### **\*\* Conference Calls**

- 1) Connect green & pink jack of gender cable for PC only to each socket of PC.  
(Green jack of gender cable <-> Earphone socket of the PC  
Pink jack of gender cable <-> MIC socket of the PC)
- 2) Log in with your Skype Name & Password.
- 3) Right-click a new contact from your Contact List and choose "Invite to conference".
- 4) Select a Skype Name and then click the "Call button" (📞) at the bottom of the window.
- 5) To end a call, click the "Cancel button" (📞).



## **LED indicator**

### **<Using Audio & Phone Dongle Mode at the same time>**

- \* During Power-on (Before pairing): The blue LED indicator blinks one time with every ten-second interval.
- \* During pairing with the Bluetooth headset (BT-1000 or the others): The blue LED indicator blinks briefly and continuously.
- \* Low battery: All of LED indicator lights will turn red.
- \* During charging: The LED indicator flashes red.
- \* Fully charged: The red LED indicator goes out.
- \* During playback: The blue LED indicator blinks one time with every five-second interval.
- \* Stop playback: The blue LED indicator blinks two times with every five-second interval.
- \* During talking over the phone: The blue LED indicator blinks three times with every five-second interval.

### **<Using Phone Dongle Mode only>**

- \* During Power-on (Before pairing): The blue LED indicator blinks one time with every ten-second interval.
- \* During pairing with the Bluetooth headset (BT-1000 or the others): The blue LED indicator blinks briefly and continuously.
- \* In a standby mode after pairing with the Bluetooth headset (BT-1000 or the others): The blue LED indicator blinks two times with every five-second interval.
- \* Low battery: All of LED indicator lights will turn red.
- \* During charging: The LED indicator flashes red.
- \* Fully charged: The red LED indicator goes out.
- \* During talking over the phone: The blue LED indicator blinks three times with every five-second interval.

### **<Using USB Dongle Mode only>**

- \* During Power-on (Before pairing): The blue LED indicator blinks one time with every ten-second interval.
- \* Being in use: The purple or blue LED indicator blinks one time with every one-second interval.
- \* During charging: The red LED indicator turns on.
- \* Fully charged: The red LED indicator goes out.





### Troubleshooting Checklist

When troubles with the player occur, please check the following troubleshooting checklist:

**1. When disconnection is occurred often.**

BT-2000 is within 30 feet(10 meters) of the mobile phone for access range. Please keep BT-2000 free from the devices propagating the electro wave because they may jam conversation.

The electro wave is unstable. Use BT-2000 after moving to the other places.

**2. It doesn't play any music files.**

Only MP3 file is available for playing back according to specific types of Bluetooth mobile phone.

**3. No sound while you are on the phone.**

Check Volume level.

### Specification

Bluetooth Compliance	Bluetooth specification v 1.2
Supporting Bluetooth Profile	Headset, Hands-free, Audio Out and Audio Remote Control
Frequency Range	2400MHz - 2483.5MHz
Transmitting Power	4dBm
Maximum Cordless	Distance 30 feet (10 meters)
Standby Time	Audio : Max. 48 hours / Phone : Max. 170 hours
Talk Time	Approx. 10 hours
Music Playing Time	Approx. 8 hours
Recharging Time	Approx. 1 hours
Dimensions / Weight	27(W) X 43(H) X 10(D) mm / 14g
System Requirement	USB Dongle: Win 98SE, 2000, ME, XP
	Phone&Audio / Phone Dongle : 4 pole 2.5mm, 3 pole 2.5mm, 3 pole 3.5mm, 10 pole, 12 pole for PC





[www.b-on.co.kr](http://www.b-on.co.kr)



Gum-Cheon ku Ga-san Dong 493-6 DaeRyung  
Techno Town 6cha #901 Seoul, Korea  
Tel : 82-2-2108-5200 | Fax : 82-2-2108-5205  
E-mail : [eric@wavesys.co.kr](mailto:eric@wavesys.co.kr)