

Opinion Plus

Installation Document

VERSION 4.74

Prepared by

WAVETEC®

www.wavetec.com

Revision Chart

Version	Primary Author(s)	Description of Version	Date Completed
1.0	Dilas Zooni Meraj dilas.zooni@wavetec.com.pk	The document contains a complete set of steps for configuring Opinion Plus Application.	April 24 th , 2015
1.1	Dilas Zooni Meraj dilas.zooni@wavetec.com.pk	Updated the setting menu for release 4.7	Dec 1 st , 2015
1.2	Syed Moaz Hasan moaz.hasan@wavetec.com.pk	Update for Installation 10" opinion plus and configuring 10" opinion plus	Feb 2 nd , 2016

TABLE OF CONTENTS

<i>Revision Chart</i>	1
1. INSTALLATING OPINION PLUS ON CLIENT SITE	3
1.1 Installation of Opinion Plus 7 inch unit	3
1.2 Installation of Opinion Plus 10 inch unit	4
2. CONFIGURING OPINION PLUS APPLICATION	6
2.1 Configuration via Telnet	6
2.2 Configuration via Setting Menu.....	8
3. CONFIGURING OPINION PLUS 10" APPLICATION	11
3.1 Configuration Static IP.....	11
4. APPENDIX	12
4.1 Connecting to Client's WIFI network.....	12
5. CONTACT US	22
6. FCC STATEMENT	23

1. INSTALLATING OPINION PLUS ON CLIENT SITE

1.1 Installation of Opinion Plus 7 inch unit

While setting up the Opinion Plus on client side following steps are required to be performed.

- Power on the Opinion Plus device by plugging the adapter to the power socket.
- Plug the Ethernet Wire to the Opinion Plus device if you have the Ethernet Based Opinion Plus.



***Note:**

Make sure that Client has DHCP enabled on their network.

- If you have Wifi based Opinion Plus then follow the Appendix section to connect your Device to Client's Wifi Network.

1.2 Installation of Opinion Plus 10 inch unit

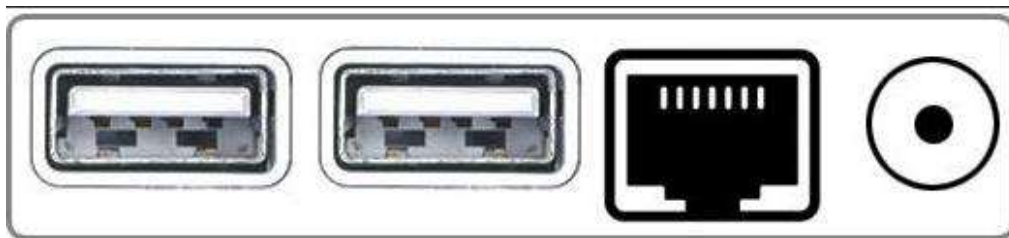
While setting up the Opinion Plus on client side following steps are required to be performed.

- Power on the Opinion Plus device by plugging the adapter cord into device and connecting it to the power socket.



After plugging in the adapter set LAN wire if you wish to connect it through LAN wire.

- 10" opinion plus can be connected through LAN or WIFI, below is the image that shows LAN port



Opinion Plus 10" can be connected through LAN wire and it consist of two USB port as well

2. CONFIGURING OPINION PLUS APPLICATION

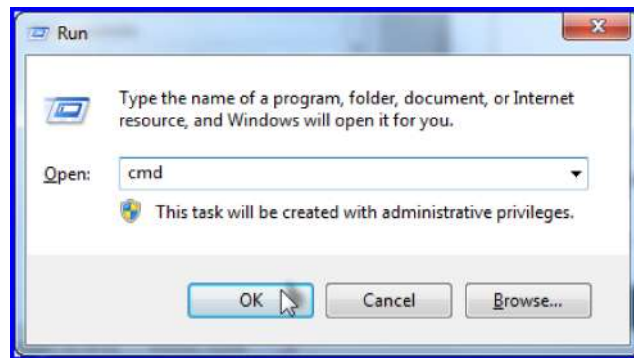
Before Configuring the Opinion Plus, make sure you have an updated application version installed in your Device. If an updated version of application is available on the Release site then download the latest version and follow the Appendix section to install the new Application.

The Opinion plus can be configured in two ways:

- i Configuration via telnet.
- ii Configuration via setting menu (Controller IP and reset time only)

2.1 Configuration via Telnet

Open up the DOS prompt from Start-> Run-> and by typing “CMD” and press enter.



DOS windows will open now type **telnet IP address** of player and **port 6500** and press enter.

```

C:\Windows\system32\cmd.exe
Microsoft Windows [Version 6.1.7601]
Copyright (c) 2009 Microsoft Corporation. All rights reserved.

C:\Users\dilas.zooni>telnet 10.10.10.90 6500
  
```

Now type the command and press enter.

```

Administrator: C:\Windows\system32\cmd.exe

serverip
Please enter server IP (192.4.70.145) :
192.4.70.145
Connection to host lost.
  
```

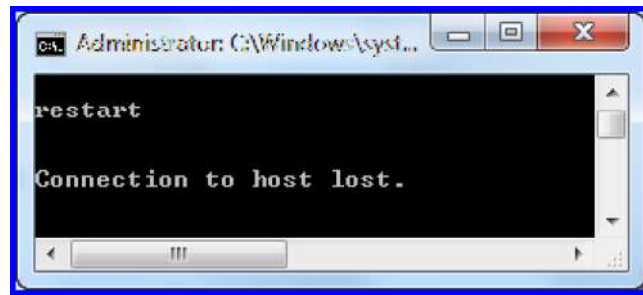
Similarly, configure the device by typing other commands like these:

Telnet Command	Description
serverip	To set/update Server IP address.
mode	To set/update eQ mode On/Off.
eqticketport	To set/update eQ ticket listening port number. 1500
telnetport	To set/update telnet listening port number. 6500
counterid	To set/update counter number.
branchid	To set/update branch id
controllerip	To set/update controller IP's
heartbeat	To set/update heartbeat (enter integer in seconds)
encoding	To set/update encoding scheme (UTF-16)

resetime

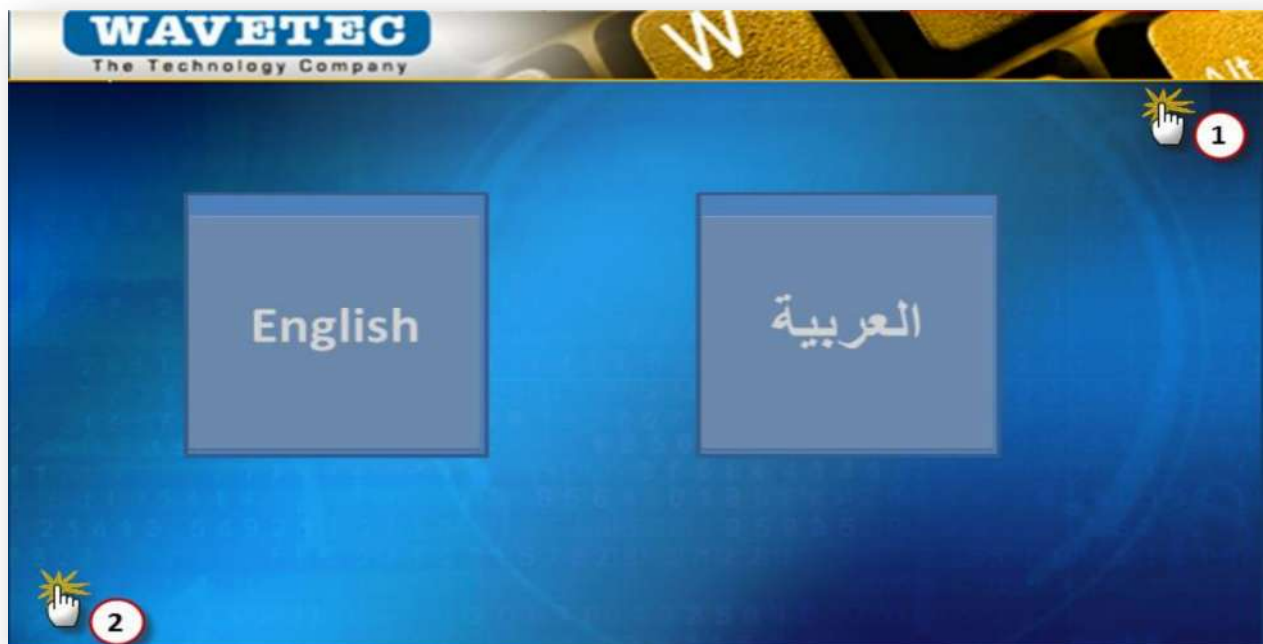
To set/update application reset time(hh:mm)

Once the configuration has been made, restart the Application in order to apply effect of the changes made.

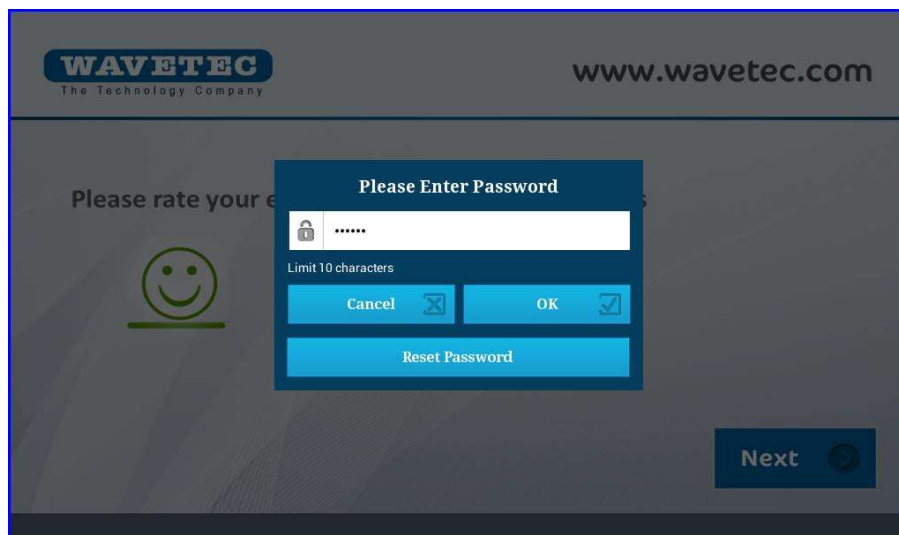


2.2 Configuration via Setting Menu

- Tap the top right and bottom left corner of the Opinion plus Tablet screen in order to enter in configuration menu as illustrated in the figure below:



- Doing so shall take you to the pop up for password



- To go in to setting menu password is **cfu123**.
- On successful password settings screen will appear as shown below

Server IP :	<input type="text" value="10.10.10.6"/>
eQ Mode :	<input type="checkbox"/> eQ Mode Off
eQ ticket listening port :	<input type="text" value="1500"/>
Settings telnet port :	<input type="text" value="6500"/>
Counter Number :	<input type="text" value="1"/>
Branch ID :	<input type="text" value="2"/>
Controller IP (Comma separated (,)) :	<input type="text" value="10.10.10.53"/>
Active Time on Charging (Minutes)	<input type="text" value="1"/>
Heartbeat Interval (Seconds) :	<input type="text" value="30"/>
Select encoding scheme :	<input type="text" value="UTF-16"/>
Application resettime (24 - hour clock) :	<input type="text" value="23"/> HH <input type="text" value="50"/> MM
<input type="button" value="SSHdroid"/> <input type="button" value="System Settings"/> <input type="button" value="Show Bar"/> <input type="button" value="Hide Bar"/>	
<input type="button" value="Save Settings"/> <input type="button" value="Test Settings"/> <input type="button" value="Force Close"/>	

WAVETEC

Server IP: Make sure the Server is set to the IP of the computer from where the poll will be downloaded.

eQ Mode: If you want to run your Opinion Plus in eQ Mode, check the box. If the Opinion Plus is to be run in standalone mode, this box will remain unchecked.

eQ ticket listening port: This port is used for broadcast listening from controller. (Set as 1500)

Settings telnet port: For configuration (Set as 6500)

Counter Number: Set the counter number for the device. Make sure it is unique for each device.

Branch ID: Make sure the branch ID is same as of the branch where the poll is to be updated. Branch ID of each branch can be viewed at any time by going to the Branch Configuration Tab provided on the Opinion Plus Portal.

Controller IP: Enter the IP of the Controller.

Active time on charging: It is the screen timeout setting when device is on charging and remains idle or inactive so it will reduce the brightness after configured time. By default, opinion plus dims the brightness of the screen after 1440 minutes of inactivity.

***Important Note:** If you have made any changes in inactive time on charger disconnect or active time on charging, you're required to unplug and plug the power cable in order to make the settings affective.

Heartbeat Interval: Set the heartbeat interval in seconds after which it ensures the connection with the Opinion Plus Portal.

Encoding Scheme: It is used for different languages used in Opinion Plus Poll. For instance, UTF-16 is used for Urdu, Arabic & Spanish. If you want to use English only then you can set UTF- 8.

Application Reset time: Set the application reset time at which the application will be restarted.

Test settings button provide you an option to test the connectivity with the Opinion Plus Portal.

Force Close button provides you an option to close the application and bring Opinion Plus on menu screen. The password for force close is 'cfu678.'

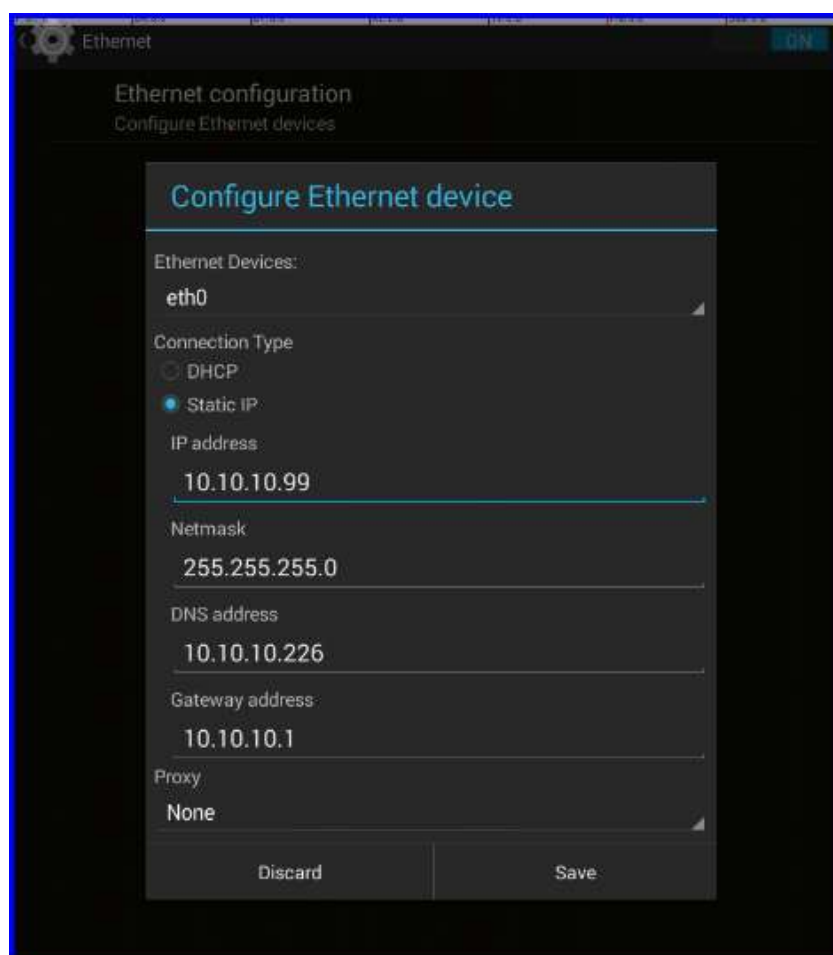
After making necessary changes to the setting click 'Save Settings'.

3. CONFIGURING OPINION PLUS 10" APPLICATION

Opinion Plus 10" has a feature of LAN port and can be configure through Ethernet with a static IP

3.1 Configuration Static IP

Go to Settings → Ethernet → Ethernet configuration



Note: To configure Ethernet you need to switch off Wi-Fi and work on Ethernet only, this device can work on Ethernet or Wi-Fi

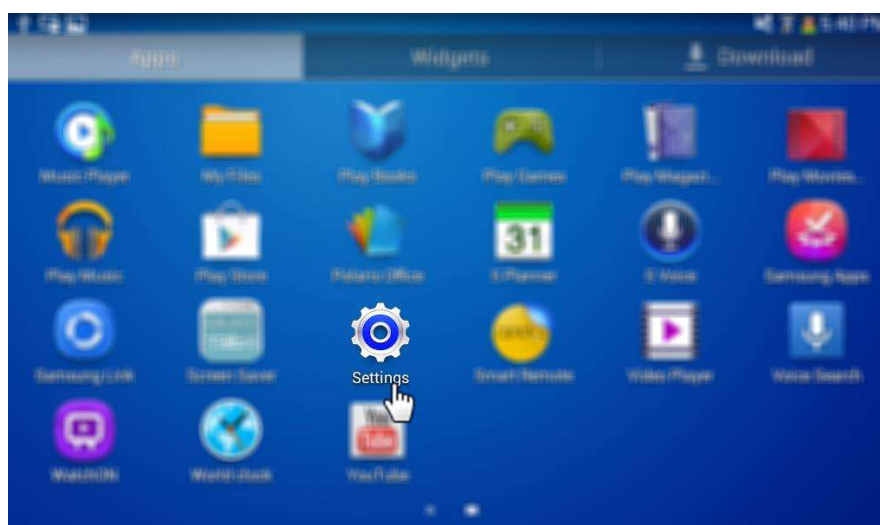
4. APPENDIX

4.1 Connecting to Client's WIFI network

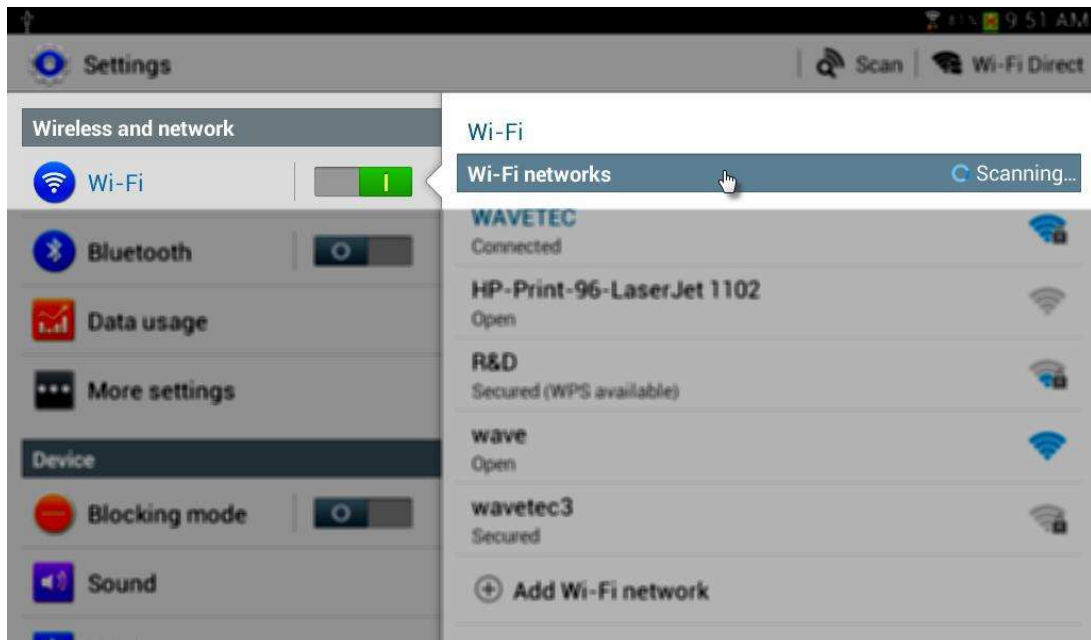
Go to settings menu and then press the Force Close button and provide password to Close the Application.



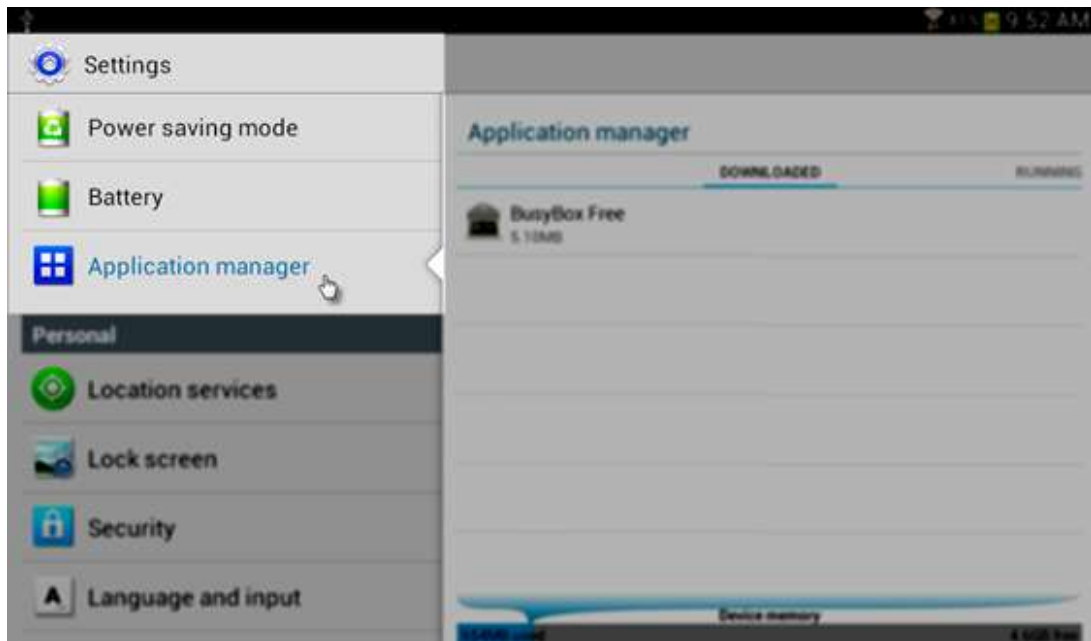
Select 'setting' option from main menu



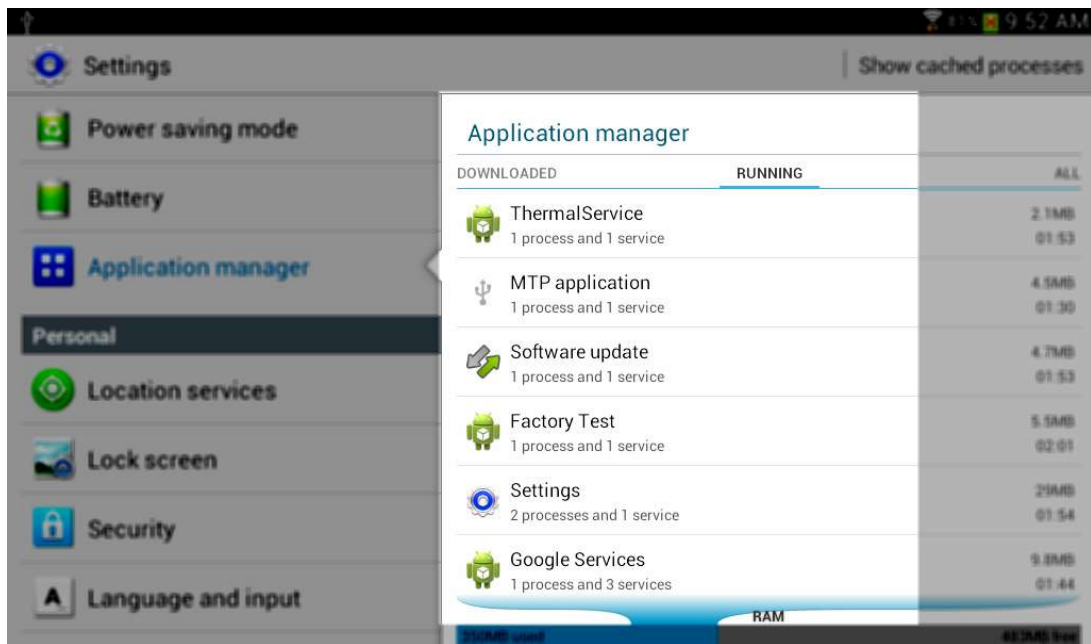
- Enter Wi-Fi setting and connects Client's Wifi network.



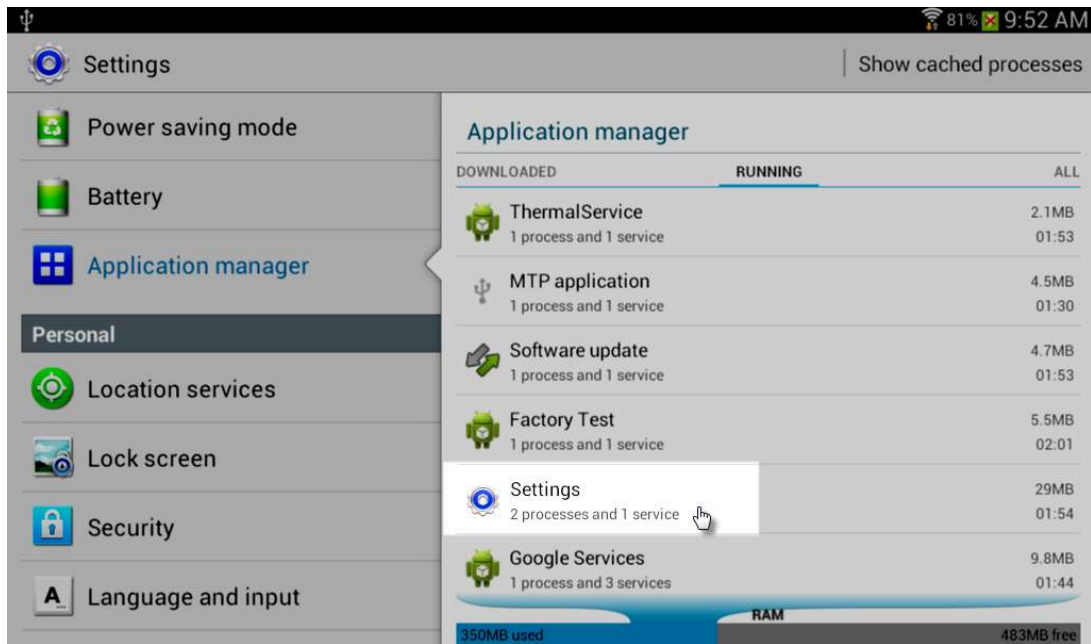
- Now Select application manager from setting menu



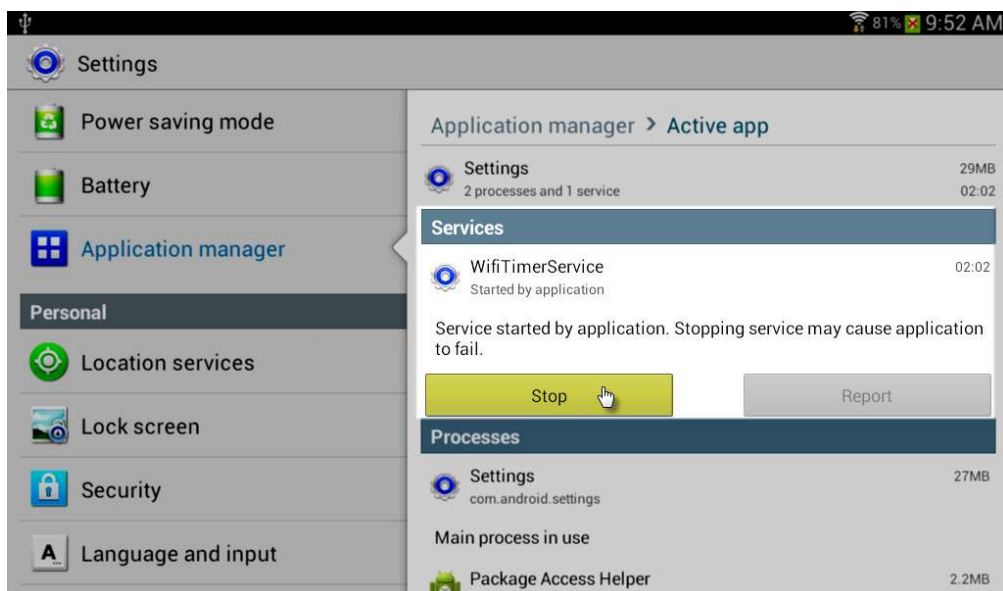
- Enter into running option



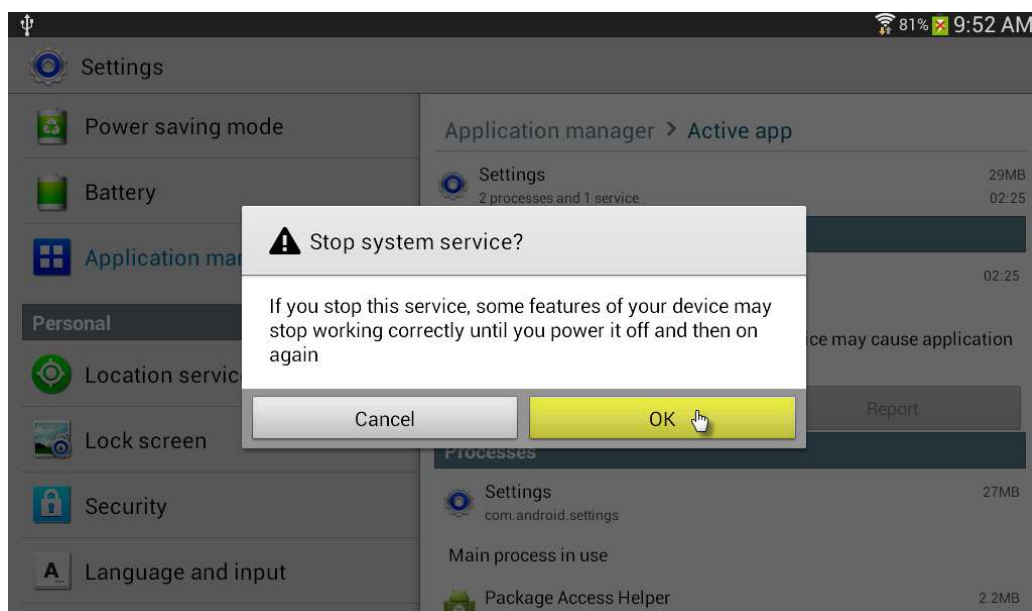
- Click 'settings'



- And press stop



- And click ok to it

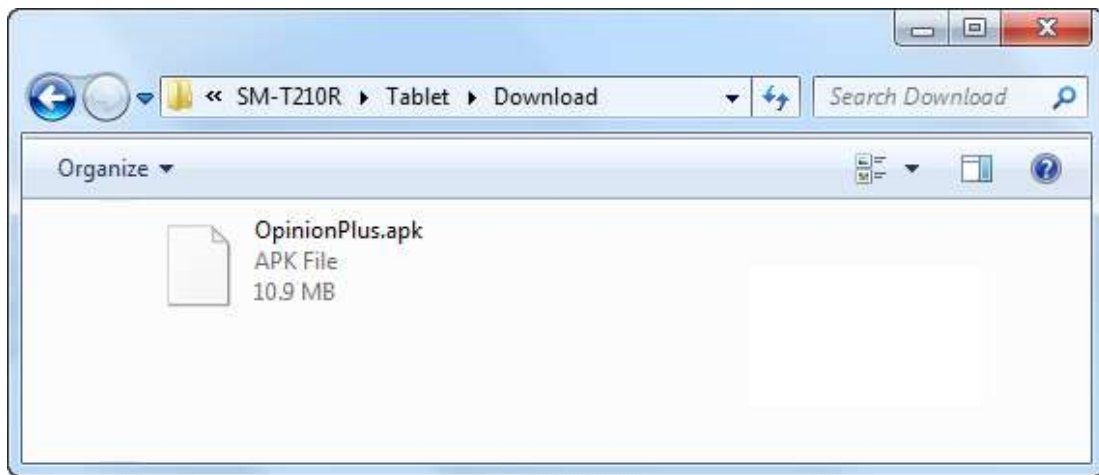


- Upon which device will come on main menu
- Again open the application Installing Opinion Plus Application

If your Opinion Plus Device is not installed with latest Application then either follow the Link to Central Update your Application through WaveSpherePortal or Follow the below steps to install new Application using your PC.

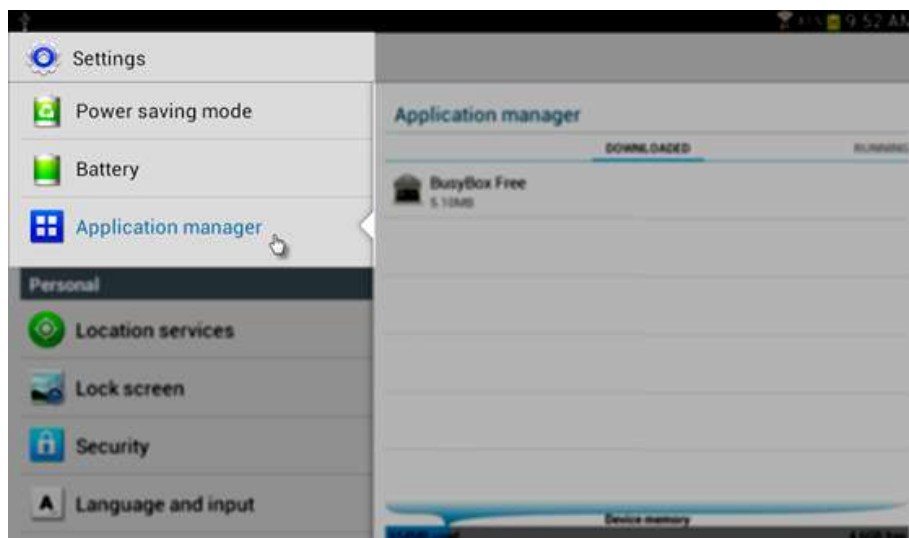
<https://drive.google.com/a/wavetec.pk/file/d/0BzY5FXaLPvvySVJIURxM1hWdnM/view>

For installing the Application, Connect the Opinion Plus device with your computer and copy the Opinion Plus Application in Downloads Folder of the Opinion Plus device.

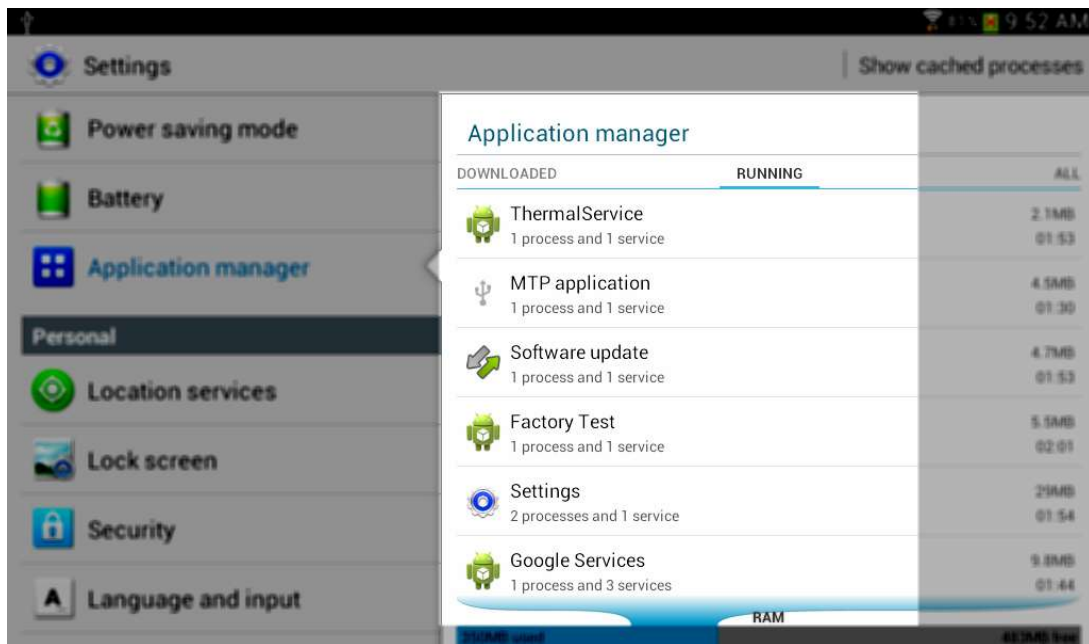


Now **Force Close** the existing Application by using Settings menu and then uninstall the existing Application from Application Manager.

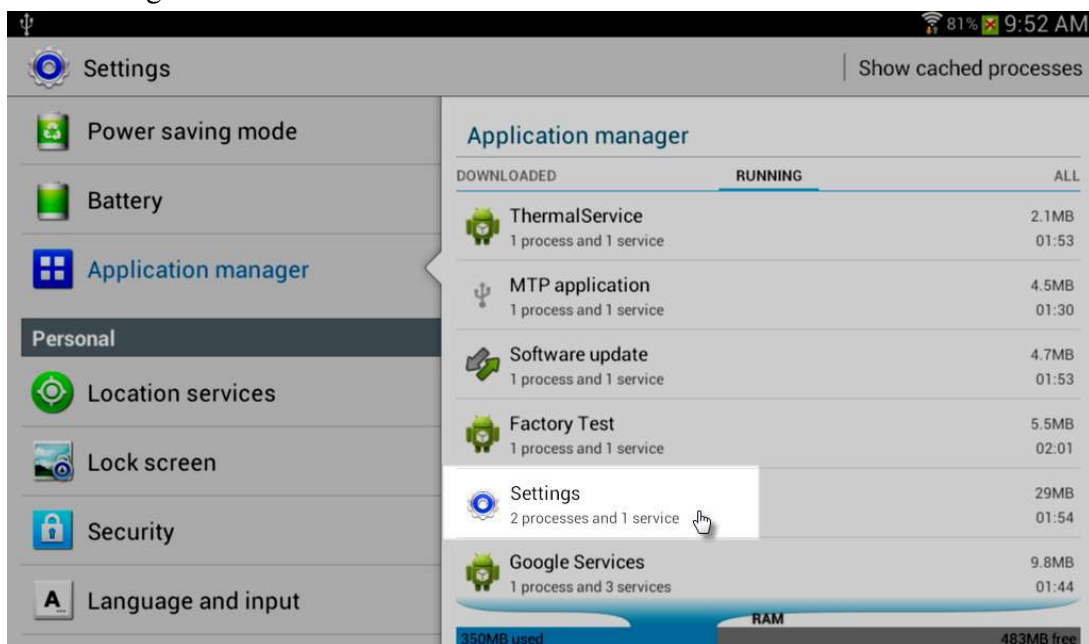
Now Select application manager from setting menu



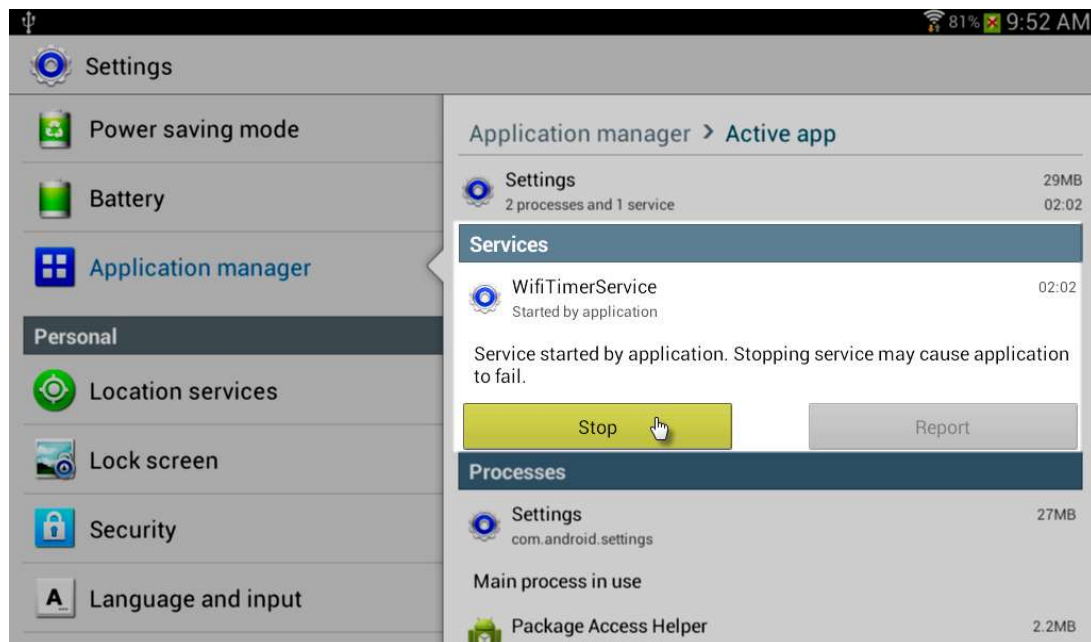
- Enter into running option



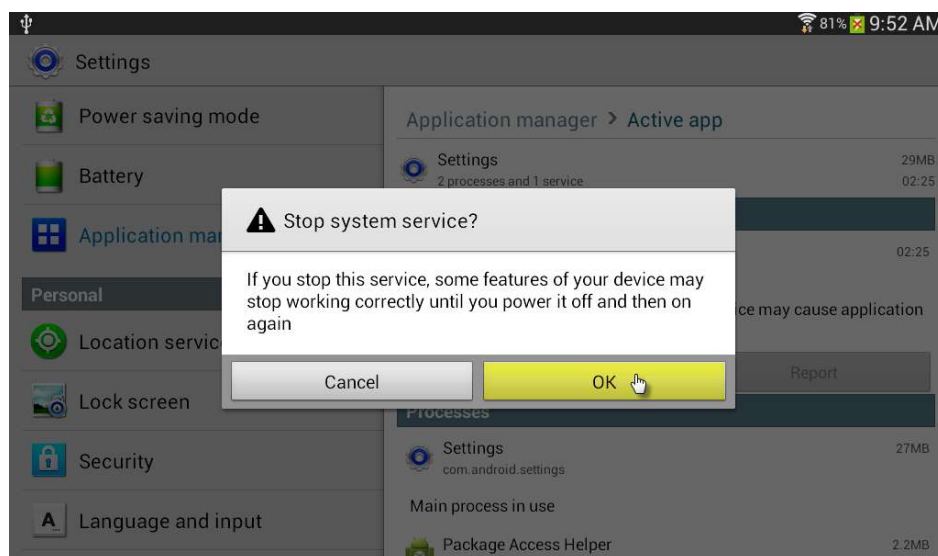
- Click 'settings'



- And press stop



- And click ok to it

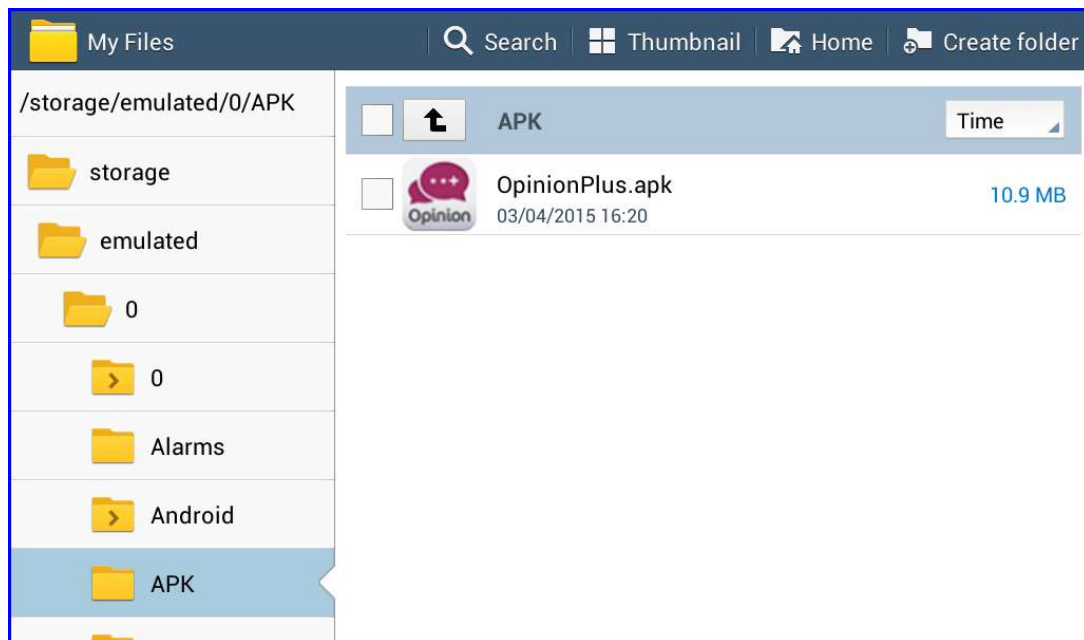


- Upon which device will come on main menu

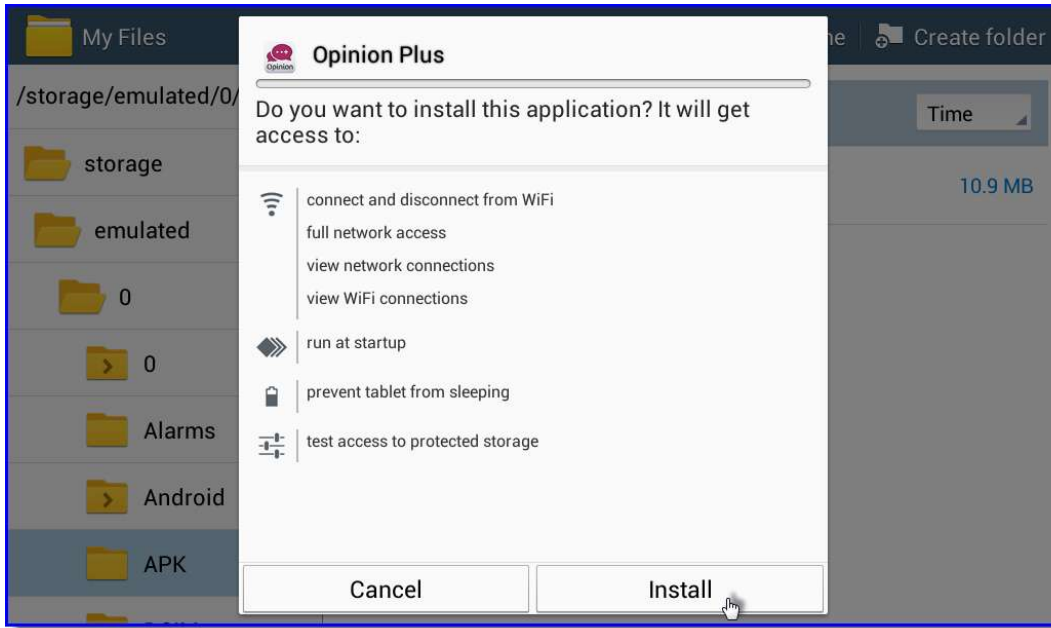
Now Select My files application in Samsung tablet. This will open the file explorer.



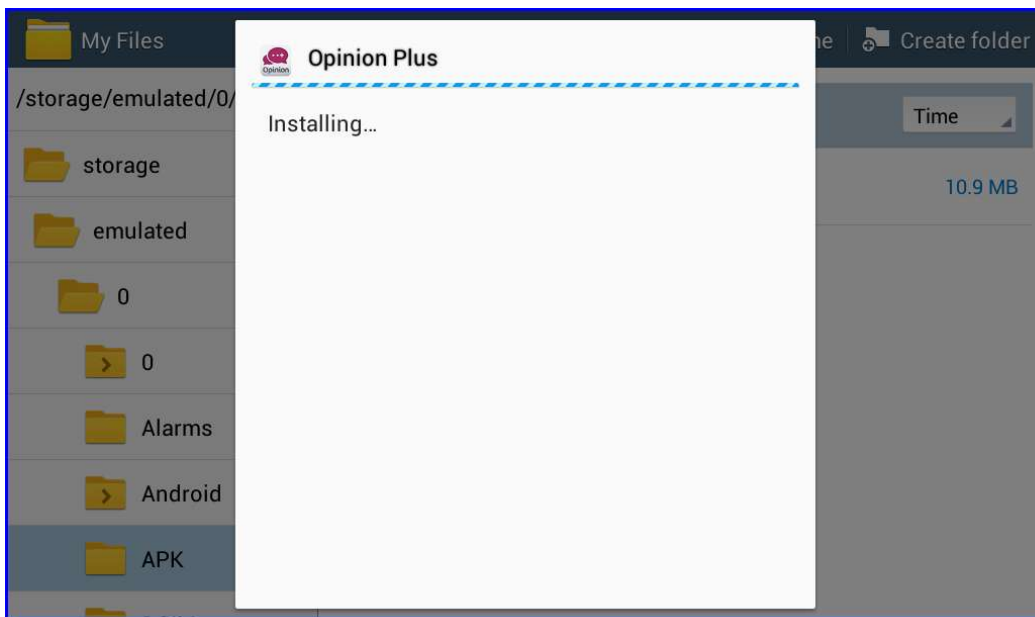
The folder contains the **OpinionPlus.apk** file. Click on it for installing the updated new APK.



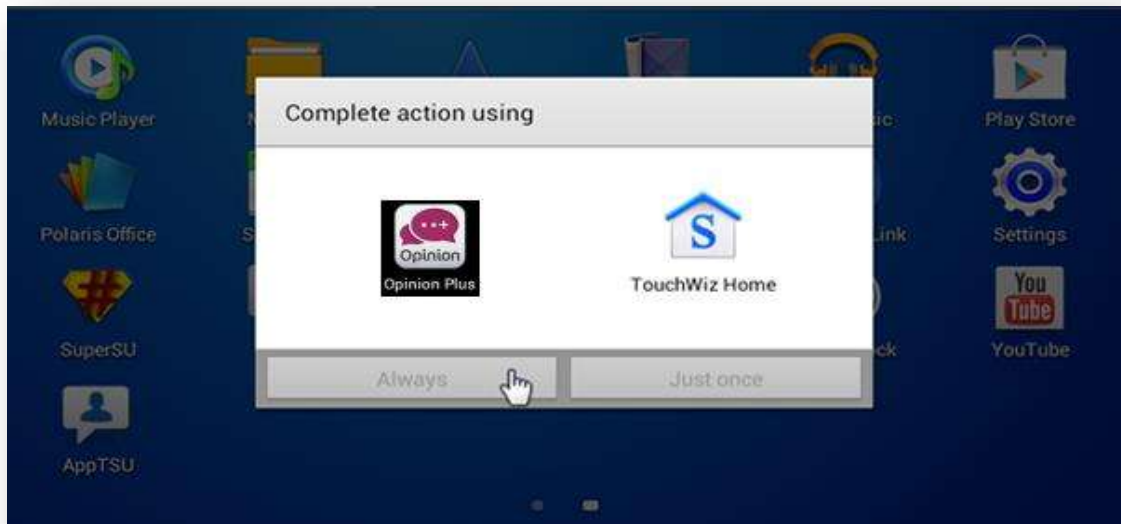
The device will ask for an options for installing application. Click on “Next” and “Install” as shown in figure below:



The installation of application will begin and the subsequent screen will appear. It will take few seconds to install.



When the installation completed, the “app installed” message will appear on the screen. Tap open to launch the application and select the **Always** option to launch it always on tablet restart.



5. CONTACT US

In case you may require further assistance regarding the ‘**Opinion Plus**’, please contact us at support.int@wavetec.com

Head Office
United Arab Emirates, Dubai
Wavetec FZCO
Address: Industrial License No. 175
Light Industrial Unit # 9
Dubai Silicon Oasis
P.O. Box 341133
Phone: +971 (4) 326 31 93
Fax: +971 (4) 326 31 92
Email: support.int@wavetec.com
Web: <http://www.wavetec.com>

6. FCC STATEMENT

This device complies with Part 15 of the FCC Rules. Operation is subject to the following two conditions:

(1) This device may not cause harmful interference, and (2) This device must accept any interference received, including interference that may cause undesired operation.

Warning: Changes or modifications not expressly approved by the party responsible for compliance could void the user's authority to operate the equipment.

NOTE: This equipment has been tested and found to comply with the limits for a Class B digital device, pursuant to Part 15 of the FCC Rules. These limits are designed to provide reasonable protection against harmful interference in a residential installation. This equipment generates uses and can radiate radio frequency energy and, if not installed and used in accordance with the instructions, may cause harmful interference to radio communications. However, there is no guarantee that interference will not occur in a particular installation. If this equipment does cause harmful interference to radio or television reception, which can be determined by turning the equipment off and on, the user is encouraged to try to correct the interference by one or more of the following measures:

- Reorient or relocate the receiving antenna.

- Increase the separation between the equipment and receiver.

- Connect the equipment into an outlet on a circuit different from that to which the receiver is connected.

- Consult the dealer or an experienced radio/TV technician for help.

FCC Radiation Exposure Statement:

This equipment complies with FCC radiation exposure limits set forth for an uncontrolled environment. This equipment should be installed and operated with minimum distance 20cm between the radiator & your body.