

EL2IN1-1102T

USER GUIDE

Laptop



Introduction and Table of Contents

| TABLE OF CONTENTS | Page |
|---|------|
| 1.0 Introduction..... | 1 |
| 1.1 Overview | 2 |
| 2.0 Appearance and Buttons..... | 3 |
| 2.1 Introduction to Desktop..... | 4 |
| 2.2 Windows Start Menu | 4 |
| 2.3 Introduction to App Interface | 4 |
| 3.0 Basic Operations..... | 6 |
| 3.1 Sleep, Restart and Shut Down | 6 |
| 3.2 Recovery..... | 6 |
| 3.3 Bluetooth..... | 7 |
| 3.4 Security Management | 8 |
| 4.0 Features | 9 |

1.0 INTRODUCTION

This User Guide is designed to guide you through the key functions and features of your new Ultra Slim Laptop. Please read carefully to ensure an optimal user experience and keep it handy for future reference.

NOTE:

To change from English language prompts to Spanish language prompts, please go to “Control Panel,” then to “Clock, Language and Region,” and then to “Language” to change from English to Spanish.

Overview and Notes

1.1 OVERVIEW

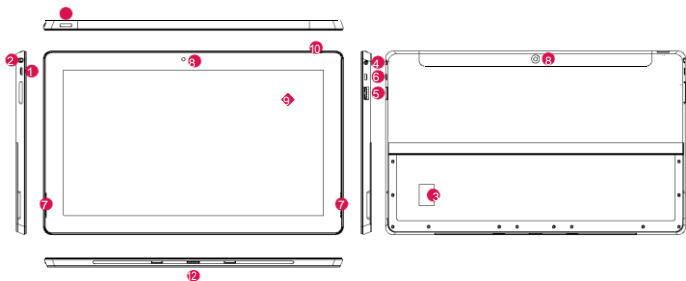
The new 11.6" TEQNIO 2in1 Laptop(EL2IN1-1102T) from EPIK Learning™ features Windows 10, a standard resolution screen of 1920x1080 and boasts a 1.8GHz Intel Cherry Trail Quad Core Processor. With the Laptop you can access the web, news, local business information and the Windows Store, where you can download your favorite apps, games, movies and more! With the built-in Bluetooth function you can seamlessly pair your Laptop with any Bluetooth compatible devices. You can store all your important documents, pictures and movies with its 32 GB of memory. The storage capacity can also be expanded up to 128 GB using the Micro-Card Reader slot. The Epik Ultra Slim Laptop is your answer for a full-featured, all-in-one laptop.

NOTES

- The Epik Laptop is a high-density electronic product. DO NOT attempt to disassemble the device.
- Please do not drop or bang the device.
- Avoid using this product in the following environments: Extremely hot or cold places, high humidity, dusty areas, direct sunlight or long-term exposure to the sun.
- The product may be cleaned with a damp cotton cloth; the use of any chemical cleaning fluid is prohibited. Please keep the product away from water at all times.
- If you use headphones, DO NOT use them while crossing the street, riding a bicycle or driving a motorcycle.
- Please use approved battery, battery charger and accessories only. The use of any other type of products would be a breach of warranty and may be dangerous.
- If you have any questions regarding the use of this product, please contact your local dealer or contact the Epik Learning customer service center directly at support@epiklearning.com or call (888) 999-1244.
- Epik Learning will not be held responsible for any files lost due to product damage, repair or other causes. Please be sure to follow instructions in the User Guide and backup your files in a timely manner.

Appearance and Buttons

2.0 APPEARANCE AND BUTTONS





- ① 1. USB Port
- ② 2. Headphone Jack
- ③ 3. Micro SD Slot
- ④ 4. DC Jack
- ⑤ 5. USB Port
- ⑥ 6. HDMI Port
- ⑦ 7. Speaker
- ⑧ 8. Camera
- ⑨ 9. LCD
- ⑩ 10. Mic
- ⑪ 11. Power
- ⑫ 12. Keyboard Connector

Introduction to Desktop

2.1 INTRODUCTION TO THE DESKTOP

You must log on to your Microsoft account before the start up application can run.

2.2 WINDOWS START MENU

Press the key  on the keyboard or click the icon  on the screen until you see the Start Menu. All applications/programs are displayed in the form of “magnets” listed on the screen. Click on any of the icons to open.



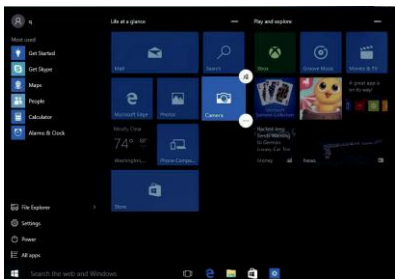
2.3 INTRODUCTION TO APP INTERFACE

If you want to pin more application programs on the Start interface, press and hold the application program for about one second, and release the magnet until the pop-up option appears and select “Pin to Start” to fix to the start screen, or just press and move to the start screen. (Screen 1).



Introduction to Desktop (Cont'd)



(Screen 1)



(Screen 2)

Conversely, if you want to cancel or delete a certain application in the Start screen, press and hold the application program magnet for about one second and click . You can also click  to check more menu options, such as resizing the magnet you want. (Screen 2) Slide it to the left from the right side of the screen to start Action Center to check the laptop status: Rotation lock, Bluetooth, Brightness, etc.

Basic Operations

3.0 BASIC OPERATIONS

3.1 Sleep, Restart and Shutdown

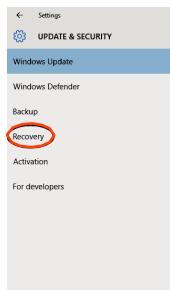
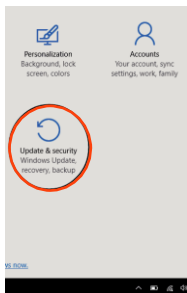
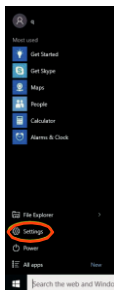
Force Reset / Shutdown


If the laptop freezes, you can press and hold the Power button for 8~12 seconds, then the laptop will shutdown.



3.2 RECOVERY


Follow the steps below







Click the  button in the lower left corner of screen and select **“Settings”** then select **“Update & Security”**, click on **“Recovery”**. The program will walk you through simple steps necessary to recover your system.

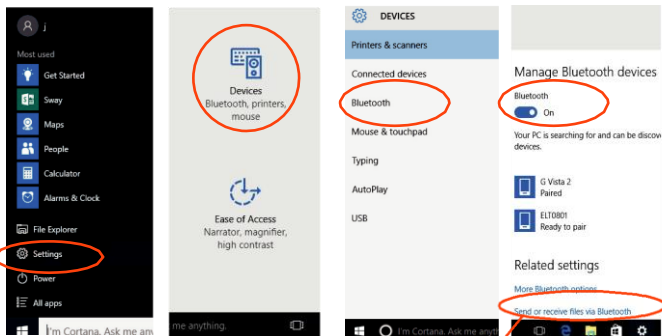
Basic Operations (Cont'd)

3.3 BLUETOOTH

- Click the  button in the lower left corner of screen.
 - Select “Settings”
 - Select “Devices”, click on “Bluetooth”.
- a) Make sure the Bluetooth switch is set to “On”
After you turn on Bluetooth, the laptop will auto-search other devices you can pair with your device.

Send or Receive Files via Bluetooth

- b) Send a File: Before sending files, you should open the window, "Select where to send your files": Click the icon  at lower right corner of desktop -  - Send a File.
- c) Receive a File: Before receiving the files, you should open the window "Waiting for a connection": Click the icon  at lower right corner of desktop -  - Receive a File.




Send or Receive Files via Bluetooth



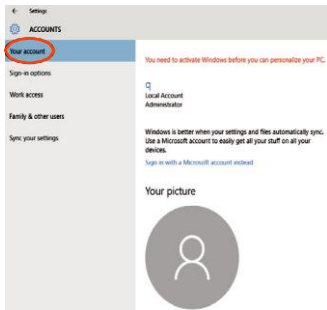
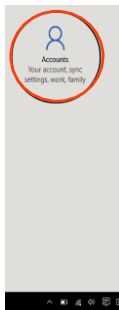
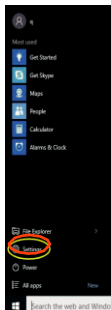
Basic Operations (Cont'd)

3.4 SECURITY MANAGEMENT

Method for quick setup:

Click the  button in the lower left corner of screen and select “Settings”.

Select “Accounts” on the right and click “Create local account” in “Your account” on the right side. After creating a user name and a password for Windows Live ID Account, input username, password, confirm password and password prompt.



Features

4.0 FEATURES

| | |
|--------------------|-------------------------------------|
| • Screen Size | 11.6" |
| • Resolution | 1920x1080 |
| • Panel Type | IPS |
| • Design | 2in1 |
| • Operating System | Windows 10 |
| • Processor | Intel Cherry Trail |
| • Processor | Quad Core |
| • Processor | 1.8 GHz |
| • Storage | 32GB |
| • Memory (RAM) | 4GB |
| • Expansion Slot | Micro SD |
| • Front camera | 2MP |
| • Rear camera | 2MP |
| • Battery | 10000 mAh Lithium - – UP TO 6 HOURS |
| • micro USB | 1 |
| • HDMI | 1 x micro |
| • USB 3.0 | 2 |

Items are included in your package:

- * Laptop
- * Power Adapter
- * User Manual
- * Keyboard

FCC Statement

This device complies with part 15 of the FCC Rules. Operation is subject to the following two conditions:

(1) This device may not cause harmful interference, and (2) this device must accept any interference received, including interference that may cause undesired operation.

Any Changes or modifications not expressly approved by the party responsible for compliance could void the user's authority to operate the equipment.

Note: This equipment has been tested and found to comply with the limits for a Class B digital device, pursuant to part 15 of the FCC Rules. These limits are designed to provide reasonable protection against harmful interference in a residential installation. This equipment generates uses and can radiate radio frequency energy and, if not installed and used in accordance with the instructions, may cause harmful interference to radio communications. However, there is no guarantee that interference will not occur in a particular installation. If this equipment does cause harmful interference to radio or television reception, equipment generates, uses and can radiate radio frequency energy and, if not installed and used in accordance with the instructions, may cause harmful interference to radio communications. However, there is no guarantee that interference will not occur in a particular installation. If this equipment does cause harmful interference to radio or television reception,

- Reorient or relocate the receiving antenna.
- Increase the separation between the equipment and receiver.
- Connect the equipment into an outlet on a circuit different from that to which the receiver is connected.
- Consult the dealer or an experienced radio/TV technician for help.

FCC RF Radiation Exposure Statement

This equipment complies with FCC RF radiation exposure limits set forth for an uncontrolled environment.