

# Table of contents

Safety Instructions .....	2
Main Functions.....	7
Basic Operations.....	9
Home screen .....	10
Install the APK application .....	11
Uninstall the APK application .....	12
Movies .....	13
Camera .....	14
Music .....	15
Regular Settings .....	15
Connect Computer.....	18
Common Issues .....	18

# Safety Instructions

Read these safety instructions before using your device and store them for possible future reference. Always follow these basic safety precautions when using your Mobile device. This reduces the risk of fire, electric shock, and injury.

- Do not expose this product to rain or moisture.
- Keep the device out of direct sunlight and heat sources.
- Protect the power cord. Route power cords so that they are not likely to be walked on or pinched by items placed on or against them. Pay particular attention to the point where the cord attaches to the device.
- Only use the AC adapter included with the device. Using any other power adapter voids your warranty.
- Do not remove the cover. There are no user-serviceable parts inside.
- If the charger cord is damaged, have it repaired by the manufacturer, its service or a similarly qualified person in order to avoid any hazard.
- The charger is not intended for use by persons (including children) with reduced physical, sensory or mental capacity. Persons who have not read the manual, unless they have received explanations by a person responsible for their safety and supervision should not use this unit.
- Children should be monitored to ensure that they do not play with the charger.
- The charger should always be readily accessible.
- The device should not be exposed to dripping or splashing water.
- No objects filled with liquids such as vases shall be placed on the device.
- Always leave a minimum distance of 10 cm around the unit to ensure sufficient ventilation.
- Naked flame sources, such as candles, should not be placed on top of the device.
- The device is intended for use only in a temperate climate.
- CAUTION: Danger of explosion if battery is incorrectly replaced or not replaced by the same type or equivalent.
- The battery should not be exposed to excessive heat such as sunshine, fire or similar.
- Different types of batteries, new and used batteries should not be mixed.
- The battery must be installed according to the polarity.

- If the battery is worn, it must be removed from the product.
- The battery must be disposed of safely. Always use the collection bins provided (check with your dealer) to protect the environment.

### **Clean your Device**

Treat the screen gently. To clean fingerprints or dust from the screen, we recommend using a soft, non-abrasive cloth such as a camera lens cloth.

If the charger cord is damaged, have it repaired by the manufacturer, its service or a similarly qualified person in order to avoid any hazard.

The charger is not intended for use by persons (including children) with reduced physical, sensory or mental capacity. Persons who have not read the manual, unless they have received explanations by a person responsible for their safety and supervision should not use this unit.

Children should be monitored to ensure that they do not play with the charger.

The charger should always be readily accessible.

The device should not be exposed to dripping or splashing water.

No objects filled with liquids such as vases shall be placed on the device.

Always leave a minimum distance of 10 cm around the unit to ensure sufficient ventilation.

Naked flame sources, such as candles, should not be placed on top of the device.

The device is intended for use only in a temperate climate.

**CAUTION:** Danger of explosion if battery is incorrectly replaced or not replaced by the same type or equivalent.

The battery should not be exposed to excessive heat such as sunshine, fire or similar.

Different types of batteries, new and used batteries should not be mixed.

The battery must be installed according to the polarity.

If the battery is worn, it must be removed from the product.

The battery must be disposed of safely. Always use the collection bins provided (check with your dealer) to protect the environment.

### **SWITCH OFF IN RESTRICTED AREAS**

Turn off the power when the use of the mobile device is not authorized or when it may cause interference or danger, for example; on board an aircraft, near medical equipment, fuel, chemicals or blasting sites.

### **ROAD SAFETY COMES FIRST**

Check the current laws and regulations in the area where you drive, regarding the use of mobile devices such as this mobile device.

- Do not hold this mobile device while driving
- Concentrate fully on the driving
- Radio Frequency (RF) can affect certain electronic systems in your car, such as the audio-stereo system or security equipment.
- An airbag inflates with great force. Do not store the mobile device or any of its accessories in the area above the bag or in its deployment area.

## **INTERFERENCE**

All wireless devices are susceptible to interference which can affect their performance.

## **AUTHORISED PERSONNEL**

Only qualified personnel are authorized to install or repair this product

## **ACCESSORIES**

Only use batteries, chargers and other accessories which are compatible for this device. Do not connect incompatible products.

## **KEEP YOUR DEVICE DRY**

Your device is not water proof. Keep it dry.

## **CHILDREN**

Keep the mobile device in a safe place out of the reach of young children. Your mobile device contains small pieces which can present a choking hazard.

## **Precautions for use**

### **This mobile device conforms to guidelines for exposure to radio frequency.**

Your mobile device is a radio transmitter and receiver. It was designed to meet the limits recommended by international guidelines on the exposure to radio-waves. These guidelines were developed by an independent scientific organisation, the ICNIRP, and include safety margins designed to assure the protection of all, regardless of their age or state of health.

The recommendations on exposure guidelines for mobile devices employ a unit of measure, known as the Specific Absorption Rate or SAR. The SAR limit, as defined in the ICNIRP recommendations is 2.0 watts/kilogram (W/Kg) averaged over 10 grams of cellular tissue.

In tests to determine the SAR the device is used in positions of standard operation at its highest certified power level in all tested frequency bands. The actual SAR level of a device in use can be less than the maximum value

because the device is designed to only use the power necessary to reach the network. This value changes depending on a number of factors such as the distance from a network base station.

### **Radio Frequency Interference**

Radio frequency emissions from electronic equipment can interfere with other electronic equipment and can cause malfunctions. Although this mobile device has been designed, tested and manufactured in accordance with the EU regulations on radio frequency emissions, the mobile device's wireless transmitter and electrical circuits can cause interference with other electronic equipment. We recommend that you take the following precautions :

Plane : Wireless equipment can cause interference in aircraft.

- Turn off the mobile device before boarding a plane
- Do not use on the runway without the crew's permission.

Vehicles : Telephone radio- frequency emissions can affect a motor vehicle's electronic systems. With regards to your vehicle, check with the manufacturer or dealer.

### Medical Implants :

To avoid any interference with the medical device, manufacturers of medical devices recommend a minimum distance of 15cm between wireless equipment and a medical implant such as a pacemaker or defibrillator. The following is recommended to people who have such devices :

- Always keep the wireless device at a distance of over 15cm from the medical device.
- Do not carry the wireless device in a breast pocket.
- Hold the wireless device at the ear opposite the medical device
- Turn off the wireless device if there is any suspicion of interference occurring.
- Follow the instructions provided by the manufacturer of the medical implant.

If you are fitted with a medical implant and have any questions regarding the use of wireless equipment, consult your doctor.

### Hearing :

Warning : If you use headphones there is a risk of not being able to hear outside sounds clearly. Do not use headphones if there is a risk of endangering your safety.

Some wireless devices can interfere with the proper functioning of hearing aids.

#### Other medical devices :

Radio transmitting equipment, including wireless devices such as this mobile device, can interfere with the operation of inadequately protected medical equipment. Consult a doctor or the manufacturer of the medical equipment to see if the equipment is adequately protected from external Radio Frequency energy. Turn your device off in places where regulations apply, especially in hospitals.

#### Health Facilities :

Hospitals and health facilities may be using equipment that is particularly sensitive to external radio-frequency emissions. Turn your mobile device off when staff or signs tell you to.

#### Blasting sites and identified areas :

Switch off your equipment in zones where the atmosphere is potentially explosive. Follow all official instructions. Sparks in such areas could cause an explosion or fire, resulting in serious bodily injury or death. Switch off your device in gas stations, especially near the gas pumps. Carefully observe instructions on use in fuel depots, storage and distribution areas, at chemical plants or in areas where explosives are used.

Areas with a potentially explosive atmosphere are often, but not always clearly marked. These include areas where it is normally advisable to switch off engines, the area below deck on boats, facilities where chemicals are transferred or stored and areas where the air contains chemicals or particles such as grain, dust or metallic powder. Check with the manufacturers of vehicles that use LPG (such as butane or propane) if the device can be used safely in their vicinity.

All our mobile devices conform to international standards and regulations, and where appropriate national recognition, to limit the exposure of users to electro magnetic fields. These standards and regulations were adopted after extensive scientific research. This research does not link the use of mobile phones with any adverse effects on health if the equipment is used in accordance to standards and regulations.

However, if you want to reduce the levels of exposure to radio frequency radiation you can limit your time using the mobile device in wireless mode because the length of time is a contributing factor to the exposure received by a person. Similarly, keeping the mobile device away from the body is another factor, as exposure levels lessen dramatically with distance.

## Main Functions

- **With WIFI for mobile internet browsing**
- **OS: Android 4.2**
- **Supports multiple audio formats**
- **Built-in microphone, super long time recording**
- **Free set of energy-saving settings, display brightness, the interface background**
- **Support E-book reading, dependent bookmarks, automatically browsing, horizontal and vertical screen switching function**
- **Support TF card and OTG function, scalable storage space**

**Appearance :**

## Basic Operations

### 1. Turn on

A long press on the power bottom turns on the device

### 2. Turn off

In the normal state, long press the power button to shutdown, select "OK" when popup whether to shut down the inquiry box.


### 3. Power Reset

Crash maybe occurred in the process of using due to Smart operating system .Tap the RESET button to force shutdown and then reboot if occurred.


### 4. Screen Saver

Press the power button, turn off the screen into the screen saver state, if you want to activate screen, press the power button again to enter the screen lock state, then slide the lock button to unlock.


### 5. Back to the desktop

Tap the screen bottom lower left of the Home icon "" can return to the desktop under any interface

### 6. Back to the previous interface

Tap the Back icon "" lower left of the screen bottom can return to the previous desktop under any interface

### 7. Settings

Tap the "" controls upper-right of the screen access to the application bar, tap the " Settings "icon into the set menu list interface

## 8. Charging

Plug the DC connector of adapter into the DC-in of device. Plug the adapter into AC power socket. While charging, the device may heat up. This is normal and should not affect your device's lifespan or performance. When the battery is fully charged (the charging icon is no longer moving), unplug the adapter, driver from the device and then from the power socket.

[Warning]

\*. Make sure the machine on a single charge once a month, then shut down before storing it without long use after fully charged.

\*. Pls do not use the device while it is charging.

Tips: using authorized accessories can enjoy adequate security to guarantee the maintenance services.

Before using the device for the first time, you should charge the battery. The power adapter (charger) is a key component of the device and plays a vital role in protecting it work properly and your safety.

Unauthorized chargers can cause batteries to explode or damage your device. Any damage caused by misuse is not covered by warranty.

## Home screen

1. By default, the home screen can open multiple pages, Implied icons are "Browser" and "Camera", etc. Sliding left / right can switch desktop display.

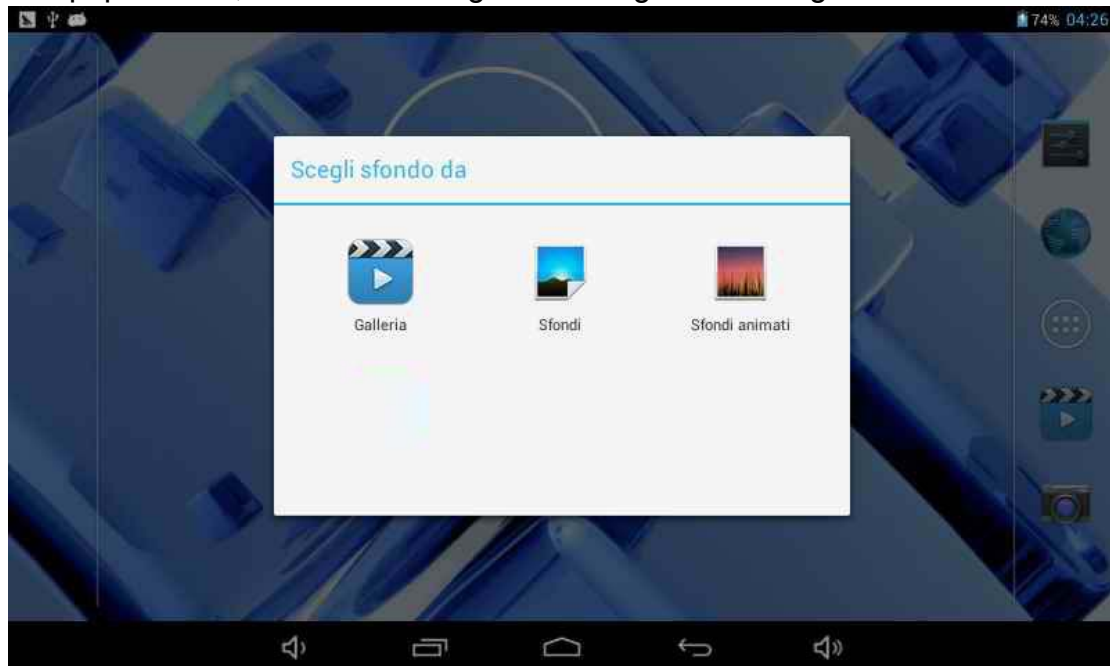


## 2. Set wallpaper

Long press the blank space of the home screen, then popup "Select

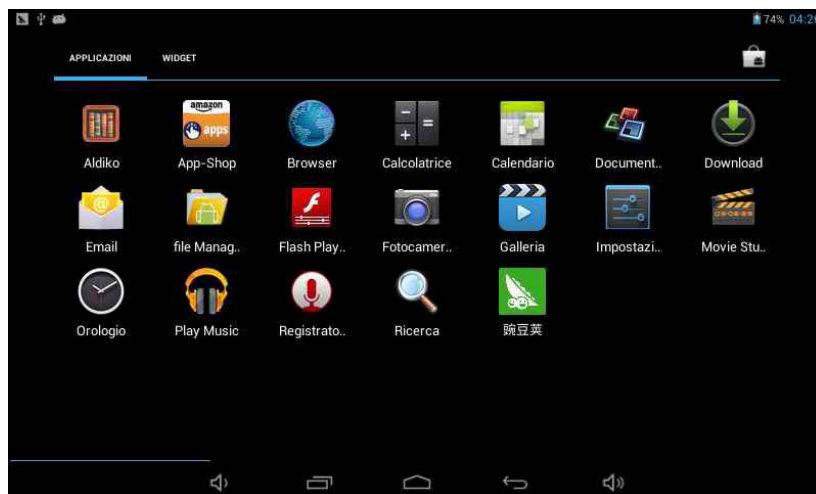


Wallpaper from", Choose an image according to the categories.



### 3. Display all applications

All installed applications will be displayed if tap "☐" control upper right of the screen under the main interface.



### 4. Notification bar

Under the main interface, tap the status bar icon, such as USB connection into the notifications panel, which can display the current status of the USB, TF card status and the running application and status.

### 5. Mobile Desktop icon

Under the home screen, long press the application icon on the home screen, then you can move the selected icon after the icon be enlarged.

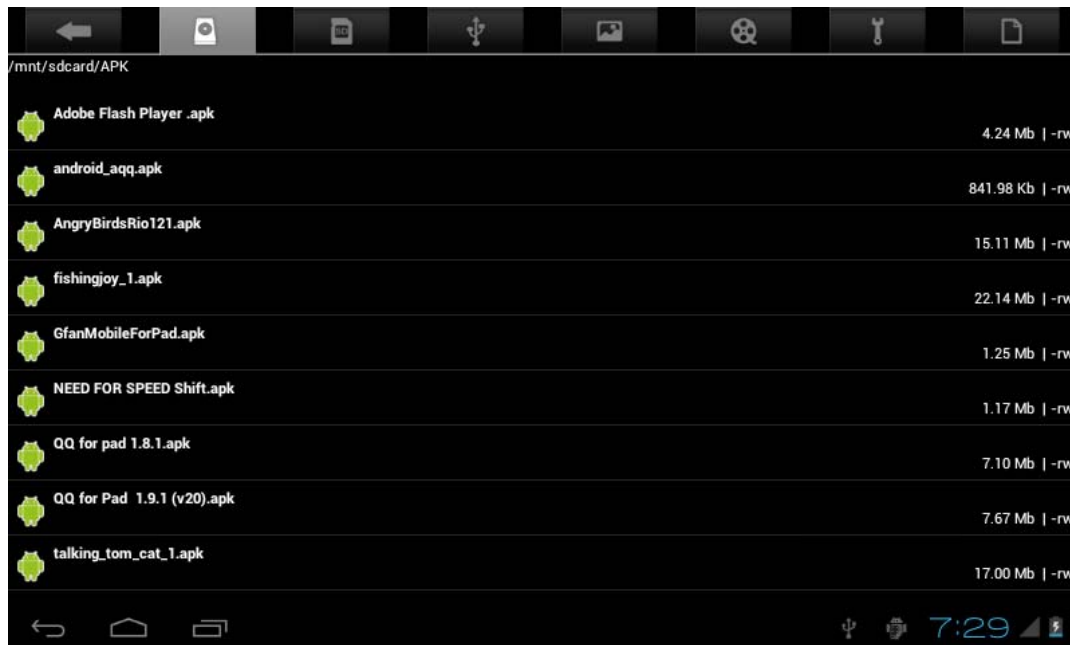
### 6. Delete the desktop icon

Under the home screen, long press the application icon on the home screen, move the selected icon to the trash can icon upper of the screen after the icon be enlarged, then stop pressing when the icon area displays orange and the

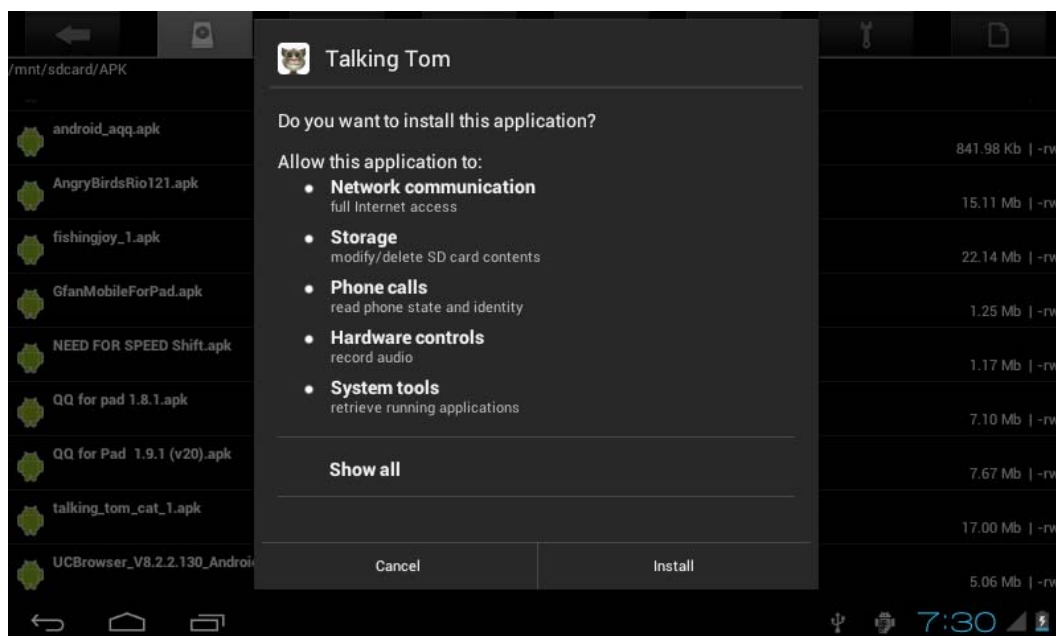
desktop icon can be deleted .

## Install the APK application

1. Copy the needed APK format application into the device or TF card.
2. Tap "File Manager" to find the APK format application you want to install .



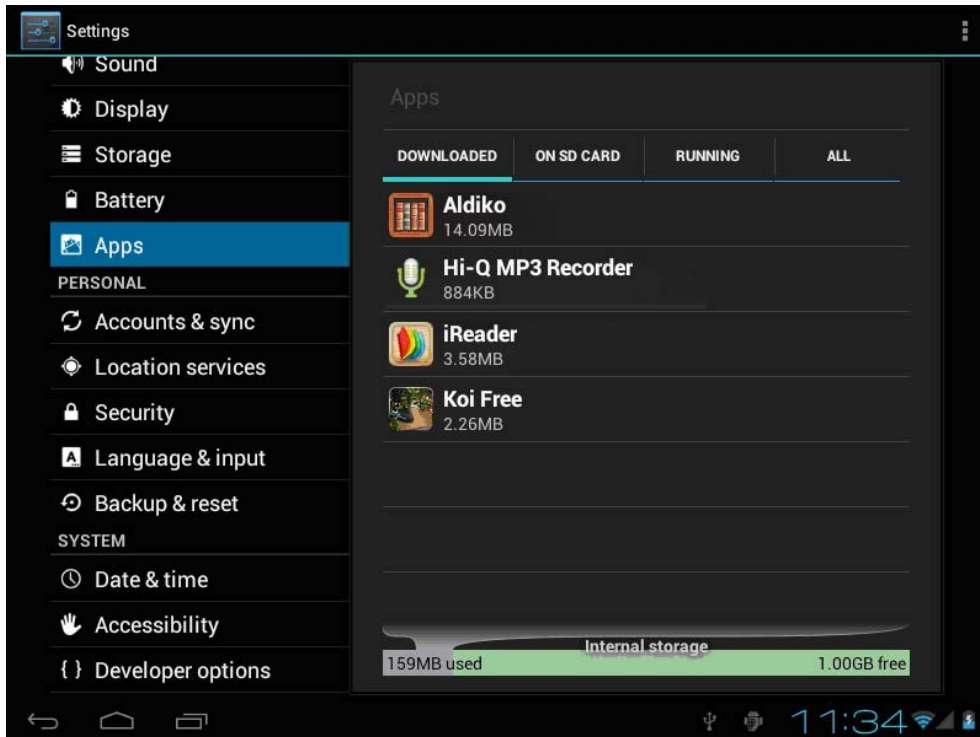
3. Tap the APK format application you want to install ,then popup "Do you want to install this application?"



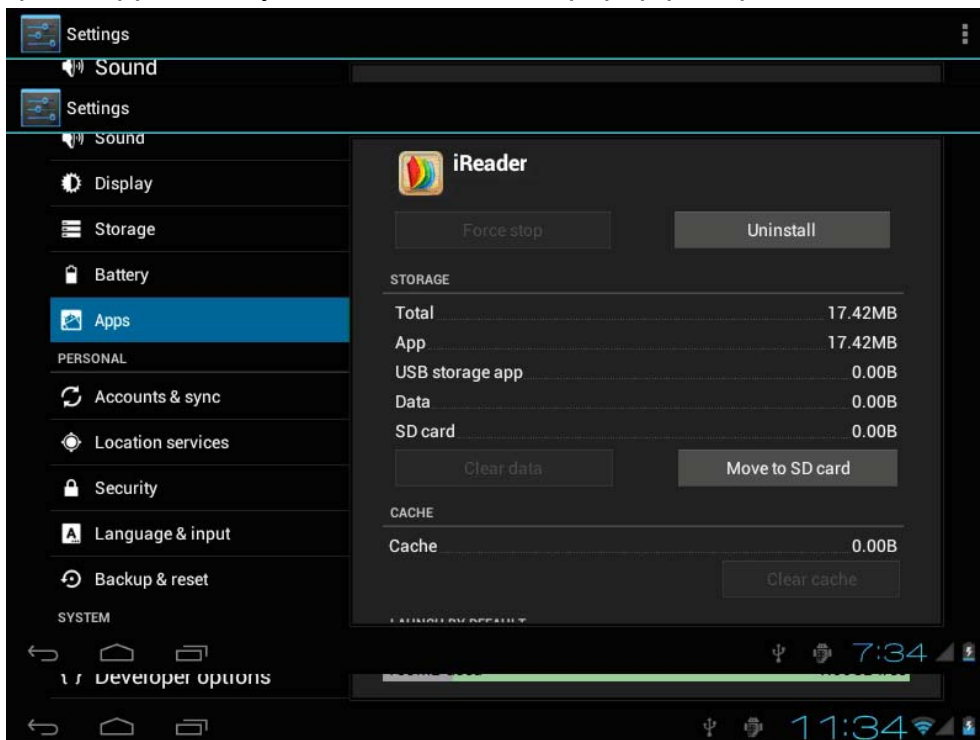
4. Tap "Install" to begin the installation of APK application

## Uninstall APK application

1. Tap "Settings" controls, tap "Settings" into Settings menu, then tap "Apps" and display installed applications list.

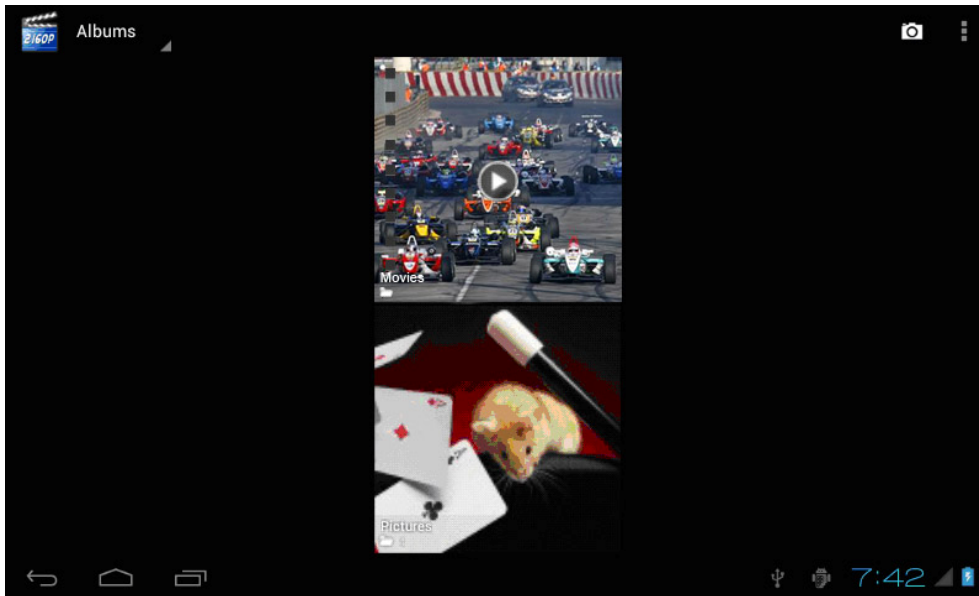


2. Tap the application you want to uninstall, popup prompt uninstall boxes



## Movies

1. Tap "Super -HD" in the home screen access to media files player interface.




2. Tap "Movies" access to the video file interface, then tap the video you want to watch



## Camera

1. Built-in camera to take photos and video

Tap "camera" to take photos and video, "" is status of taking photos, tap

"" to take photos and preserve automatically, "" is recording video, tap

"🔴" to start, tap "⏸️" again to pause, tap "⚙️" to set related functions.



## Music

1. Select "Music" in application bar access to music file list screen.



- Files: tap the music you selected and play music
- Tap 🏠 back to home screen, tap ⬅️ back to previous screen.
- Tap up and down to process page.
- Artist: display music files classified by Artist
- Albums: display music files classified by album
- Songs: display all music files
- Playlists: display music files

- Now playing: access to the background music player interface.

## Regular Settings

1. Select "settings" after access into application bar to set list interface.

2. WIRELESS&NETWORKS

Wi-Fi function on or off

Wi-Fi settings set up and manage a network connection.

### 3. Sound

Volumes: adjust the volume level for call ringtones, music and videos, alarm ringtones, device system, and notifications.

Default Notification: Select the application which you want default notice.

Touch sounds: Set the device to sound when you unlock the touch screen.

Screen lock sounds: Set the device to sound when you lock the touch screen.

### 4. Display

Brightness: Set the brightness of the display.

Wallpaper: Select wallpaper for the home screen

Auto-rotate screen: viewing in portrait or landscape, adjusting automatically to fit the new orientation

Sleep:set sleeping time

Font size: set the size of the font

Accelerometer coordinate system: set the accelerometer coordinate system

Screen adaptation: used to adjust part of games' screen size.

### 5. Storage

Displays the memory card and USB storage settings of available storage space

### 6. Battery

Displays the battery level or charging status

Caution: Risk of explosion if battery is replaced by an incorrect type. Dispose of used batteries according to the instructions

### 7. Apps

View "DOWNLOADED", "ON SD CARD", "RUNNING" and "ALL" applications list, etc.

### 8. Accounts & sync

Change the settings for the auto sync feature or manage accounts for synchronization.

### 9. Location Services

Set to use the "Google's location service" and "Location & Google search" to gather and use data based on your location

### 10. Security

Screen lock: set screen lock and owner info

Encrypt tablet

Passwords: make passwords visible

Device administrators: view or deactivate device administrators

Unknown sources: allow installation of non-Market apps

Trusted credentials: display trusted CA certificates

Install from SD card: Install certificates from SD card

Clear credentials: remove all certificates

### **11. Language & input**

Language: Select a display language for all menus and applications.

Personal dictionary: Add a word by touching the Add (+) button

KEYBOARD&INPUT METHODS: set keyboard and input methods

SPEECH: Set the voice search and text-to-Speech (TTS) output

MOUSE/TRACKPAD: set pointer speed

### **12. Back up and reset**

Back up my data and reset factory data

### **13. Date & time**

Set date and time

### **14. Accessibility**

TalkBack: Set turn on /off TalkBack

Large text: display large text

Auto-rotate screen

Touch & hold delay: set the time of touch and hold delay

Install web scripts: set whether to allow the installation of web scripts.

### **15. Developers options**

USB Debugging: debug mode when USB is connected

Development device ID: display development device ID

Stay awake: screen will never sleep while charging

Allow mock locations

HDCP checking: use HDCP checking for DRM content only

Desktop backup password: Set the full desktop backup password.

Strict mode enabled : flash screen when apps operating do long operations on main thread

Pointer location: screen overlay showing current touch data

Show touches: show visual feedback for touches

Show screen updates: flash areas of screen when they update

Show CPU usage: screen overlay showing current CPU usage

Force GPU rendering: Use 2D hardware acceleration in applications

Window animation scale: animation scale 1x

Transition animation scale: animation scale 1x

Don't keep activities: Destroy every activity as soon as the user leaves it

Background process limit: standard limit

Show all ANRs: show App Not Responding dialog for background apps

### **16. About tablet**

Touch panel 7" capacitive 5 points

Android 4.1

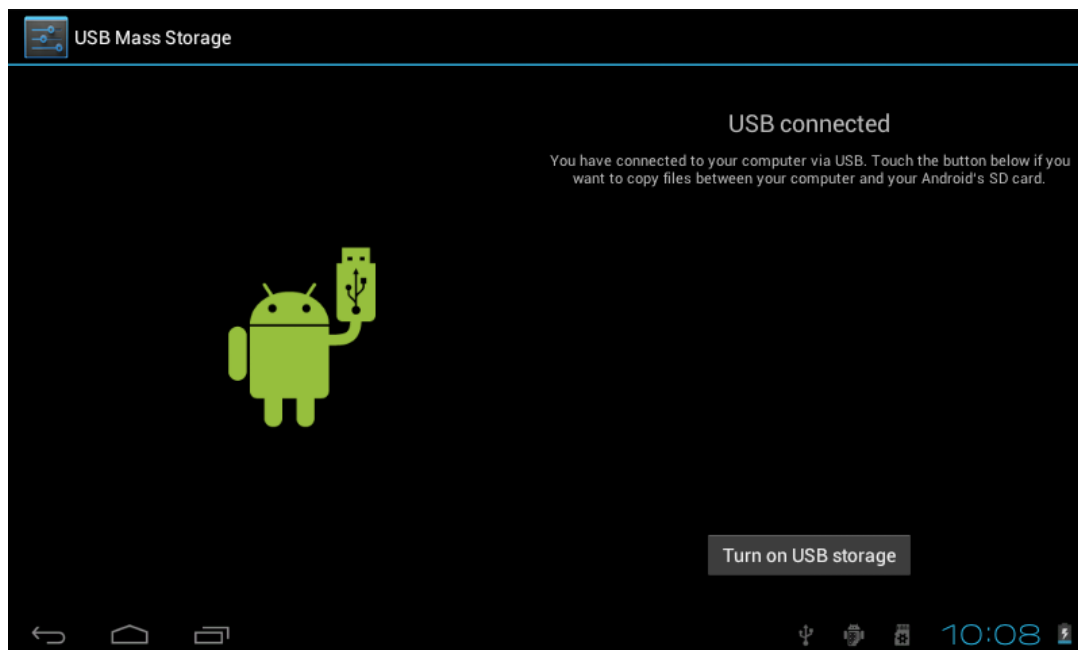
Resolution 800 X 480

Storage 8GB Nand flash+ 512MB DDR III  
Micro card reader Max: 32GB  
USB port 2.0  
Digital camera 0,3 mega pixels + 2.0 mega pixels  
WIFI 802,11b/g/n  
Supported formats :  
Picture file jpeg,jpg,bmp,gif,png  
Audio mp3,mp2,ape,wma,wav,flac,ogg,aac,3gp  
Video rmvb,mkv,wmv,mov,mp4,pmp,mpeg,mpg,flv,3gp,mpg,h,264  
Battery 2400mAH  
Accessories included  
Main adaptor AC240V/DC5V2A  
User manual

## Connect computer

The device could connect to PC via USB wire for data copy and delete.

1. Connected the device to PC port via USB wire, then there will be showed "USB connected" on PC screen
2. Tap "USB connected" option, select "open USB storage setting", then you can see movable hardware icon which can be operated like using USB.



## Common Issues

### 1. Out of run



Check the batteries whether it out of charge.

Checking after get connected to the power adapter.

If it still can not turn on after charging, please contact the customer service center.

## **2. No voice in the earphone**

Make sure the volume is not turned down all the way

Unplug the headset, then plug it in again. Make sure you push connector all the way in.

## **3. Charging issues**

Please make sure the setting of the charger is according with the device.

Please don't use the front USB ports for charging

## **4. Download issues**

Make sure it connect with PC properly.

You'd better not to use the front USB port to connect to PC.

## **5. Why some of downloaded videos can not play normally?**

The device is compatible with most of video file format, but there still have some differences in format, encoded mode, Resolution and code rate etc. it could result in some of the videos can not play or have play issues. our suggestion is that use the three party adapter softwares for transforming in the PC then copy to the device.

## **6. Device crashed or can't turn on**

Once device crashed during the running time, It can be restarted via tap the RESET button at the side of device.

## FCC Information and Copyright

This equipment has been tested and found to comply with the limits for a Class B digital device, pursuant to part 15 of the FCC Rules.

These limits are designed to provide reasonable protection against harmful interference in a residential installation. This equipment generates,

uses and can radiate radio frequency energy and, if not installed and used in accordance with the instructions, may cause harmful interference

to radio communications. However, there is no guarantee that interference will not occur in a particular installation. If this equipment does

cause harmful interference to radio or television reception, which can be determined by turning the equipment off and on, the user is

encouraged to try to correct the interference by one or more of the following measures:

- Reorient or relocate the receiving antenna.
- Increase the separation between the equipment and receiver.
- Connect the equipment into an outlet on a circuit different from that to which the receiver is connected.
- Consult the dealer or an experienced radio/TV technician for help.

### 15.19 Labelling requirements.

This device complies with part 15 of the FCC Rules. Operation is subject to the following two conditions:

- (1) This device may not cause harmful interference, and
- (2) this device must accept any interference received, including interference that may cause undesired operation.

changes or modifications not expressly approved by the party responsible for compliance could void the user's authority to operate the equipment.

**FCC RF warning** statement: the device has been evaluated to meet general RF exposure requirement , The device can be used in portable exposure condition without restriction.