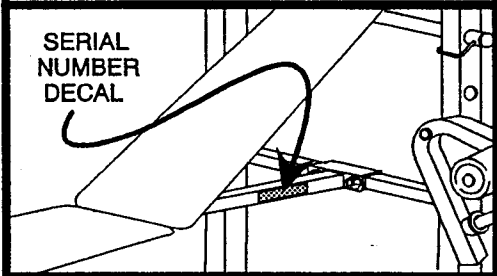


ULTRAMAX

multi-function 14 in 1 bench

MODEL 1033

MODEL NO. 1033 ~~1033~~
SERIAL NO.
Write serial number in the space
above for reference.



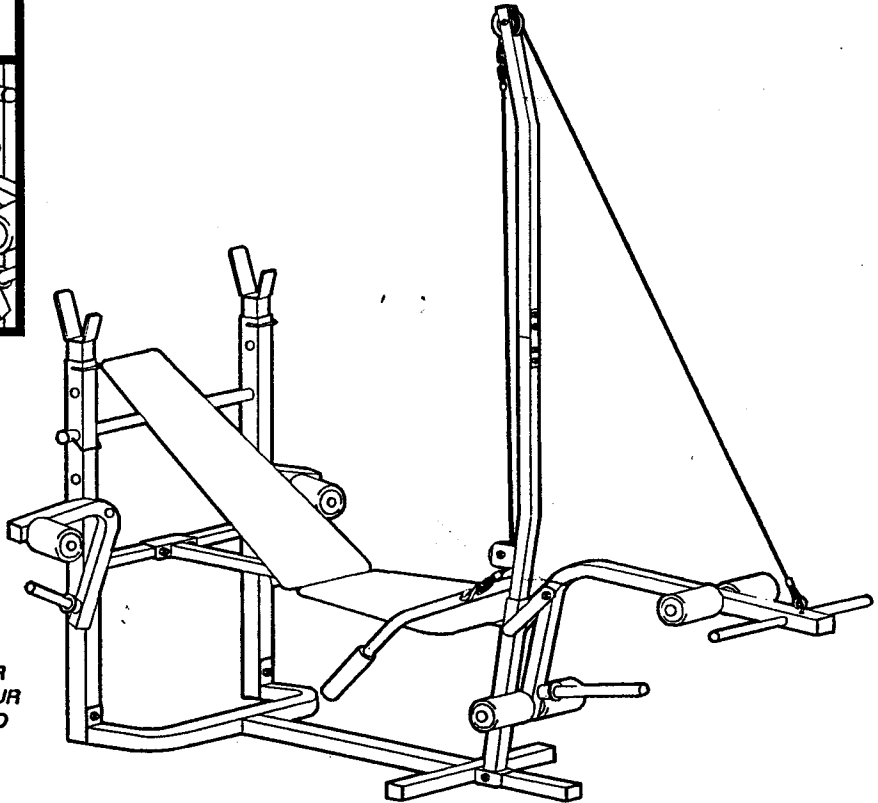
WAIT, READ THIS FIRST!

If you find this unit to have missing or defective parts
please have ready the following information listed
below before calling the 800 NUMBER.

The ASSEMBLY MANUAL
MODEL NUMBER of this UNIT
PART NAME or DESCRIPTION
ORDERING NUMBER
THE QUANTITY of each part that you need.

THE MODEL NUMBER of this unit can be found
in the UPPER LEFT-HAND or RIGHT-HAND CORNER
of this page. The MODEL NUMBER is a series of FOUR
or FIVE NUMBERS, or a NUMBER preceded by TWO
LETTERS.

THE PART NAME or DESCRIPTION and the
ORDERING NUMBER can be found on the PARTS
LIST PAGE.



weider

OWNER'S MANUAL

MADE IN CANADA

WEIDER is committed to providing you complete customer satisfaction. If you have any questions concerning the assembly of this product or find damaged or missing parts, we guarantee you direct assistance. **AVOID THE HASSLE OF CONTACTING THE STORE FOR PARTS.** Call our "CUSTOMER ASSISTANCE LINE" for assistance with parts and information by calling our toll free number 1-800-225-0653, Mon.-Fri., 8am-5pm CST.

IMPORTANT: Read all safety precautions and instructions in this manual carefully before using this equipment. Save this manual for future reference.

Printed in CANADA

WEIDER SPORTING GOODS, INC.
21100 Erwin Street, Woodland Hills, CA. 91367 USA

TABLE OF CONTENTS

Table of Contents	1
Important Safety Precautions	1
Introduction	1
Assembly Steps	5-11
Maintenance Tips	3
Parts List	2-3
Ordering Parts	4

INTRODUCTION

Thank you for choosing Weider fitness equipment. Your Weight Bench is designed and engineered to give you many hours of weight conditioning.

This manual is provided to help you understand the simple assembly, adjustments, and use of the Weight Bench. In addition to assembly instructions it also contains conditioning guides, maintenance tips, and parts information.

Please take the time to read all the information contained in this manual and after assembly is completed keep it for future reference.

IMPORTANT SAFETY PRECAUTIONS

WARNING: To reduce the risk of serious injury, read the important safety precautions before using this equipment.

1. Read all instructions in this manual before using this equipment.
2. Use this equipment only as described in this Owner's Guide.
3. Inspect and tighten all parts each time this equipment is used. Replace any worn parts immediately.
4. Keep hands away from moving parts other than the designated handles.
5. Keep small children away from this equipment during use.

WARNING: Before beginning this or any exercise program consult your physician. This is especially important for individuals over the age of 35 or persons with pre-existing health problems. Read all instructions before using. Weider assumes no responsibility for personal injury or property damage sustained by or through the use of this product.

SAVE THESE INSTRUCTIONS

1033 PART LIST

DIAGRAM NO.	PART NAME	QTY	ORDERING NO
1	UPRIGHT	1	C1260-G01*G01
2	BASE FRAME	1	C4193-G01*G01
3	MAIN FRAME	1	C4194-G01*G01
4	BACKREST	1	C1421-G01*G01
5	SEAT	1	C1422-G01*G01
6	LONG ANGLE IRON	2	C6293-G01*G01
7	WEIGHT PIN - LEG EXTENSION - 1" X 13 3/4"	1	C7312-G01*G01
8	LEG EXTENSION	1	C4195-G01*G01
9	PAD BAR - LEG EXTENSION - 3/4" X 13 1/2"	2	C7313-F01*G01
10	WEIGHT BAR - 1" X 12"	1	C7314-G01*G01
11	FOAM ROLLER PAD - 3" X 5 1/2"	6	C0411-C04*G01
12	CABLE - LONG	1	C6660-G01*G01
13	CABLE - SHORT	1	C6661-G01*G01
14	MAST TOP SECTION	1	C4196-G01*G01
15	MAST BOTTOM SECTION	1	C4197-G01*G01
16	MAST CONNECTOR PLATE	2	C7735-G01*G01
17	PULLEY	2	AA-8034*G01
18	LAT BAR	1	C6226-C15*G01
19	FOAM GRIP - 1" X 5"	2	C0417-B05*G01
20	BUTTERFLY - RIGHT	1	C4198-G01*G01
21	BUTTERFLY - LEFT	1	C4199-G01*G01
22	PAD BAR - BUTTERFLY - 3/4" X 9"	2	C7315-G01*G01
23	WEIGHT PIN - BUTTERFLY - 1" X 10 1/2"	2	C7316-G01*G01
24	ADJUSTABLE UPRIGHT	2	C1261-G01*G01
25	BACKREST ADJ BAR	1	C6403-G01*G01
26	ARM CURL PAD	1	C1423-G01*G01
27	PAD SUPPORT	1	C6294-G01*G01
30	5/16" NYLON LOCK NUT	10	HH-5012*G01
31	5/16" X 2 1/2" HEX HEAD BOLT	2	HH-5053*G01
32	5/16" X 3 1/4" HEX HEAD BOLT	1	HH-5297*G01
34	5/16" X 1 3/4" EYELET BOLT	2	HH-5313*G01
35	5/16" X 2" CARRIAGE BOLT	4	HH-5311*G01
36	5/16" ACORN NUT	5	HH-5433*G01
37	5/16" X 5" HEX HEAD BOLT	2	HH-5328*G01
38	5/16" X 2" HEX HEAD BOLT	1	HH-5054*G01
39	5/16" X 2 1/4" HEX HEAD BOLT	3	HH-5199*G01
40	1/4" NYLON LOCK NUT	2	HH-5011*G01
41	1/4" X 3/4" ROUND HEAD MACHINE SCREW	8	HH-5022*G01
42	1/4" X 2" ROUND HEAD MACHINE SCREW	2	HH-5256*G01

1033 PART LIST

DIAGRAM NO.	PART NAME	QTY	ORDERING NO
45	3/8" NYLON LOCK NUT	3	HH-5088*G01
46	3/8" X 2 1/2" HEX HEAD BOLT	1	HH-5018*G01
47	3/8" X 1 1/2" HEX HEAD BOLT	1	HH-5068*G01
48	3/8" X 2" HEX HEAD BOLT	1	HH-5244*G01
51	STOPPER PIN	2	WW-7038*G01
55	2" SQUARE PLASTIC INSERT CAP	2	AA-8002*G01
56	1 1/2" SQUARE PLASTIC INSERT CAP	6	AA-8125*G01
57	1" ROUND PLASTIC COVER CAP - 15'	1	AA-8070*G01
58	3/4" ROUND PLASTIC INSERT CAP	7	AA-8004*G01
59	1" ROUND PLASTIC INSERT CAP	5	AA-8005*G01
59-A	1" ROUND PLASTIC COVER CAP - (9-1 WRITTEN INSIDE)	2	AA-8093*G01
60	7/8" ROUND PLASTIC INSERT CAP	2	AA-8088*G01
61	1 1/2" SQUARE PLASTIC INSERT CAP (#240 - 14-16 GA)	1	AA-8001*G01
64	LOCKING PIN - SMALL	2	WW-7002*G01
65	5/16" I.D. X 13/32" LONG METAL SPACER	2	HH-5526*G01
67	1/2" O.D. X 3/4" LONG METAL SPACER	1	HH-5259*G01
68	1/2" O.D. X 1 3/8" LONG METAL SPACER	1	HH-5264*G01
69	1/2" O.D. X 3" LONG PLASTIC SPACER	2	AA-8128*G01
70	S-HOOK	2	WW-7030*G01
71	WEIGHT STOP	3	AA-8112*G01
72	PLASTIC SLEEVE - 1 1/8" O.D. X 2" LONG	2	AA-8091*G01
80	UPRIGHT DECAL	1	DE-4373*G01
	ASSEMBLY MANUAL	1	CNN-1255*G01
	HARDWARE BAG (BOLTS & NUTS)	1	C8789-G01*G01
	HARDWARE BAG (PLASTICS)	1	C8790-G01*G01

MAINTENANCE TIPS

Keeping your weight bench in good condition will help insure you many hours of safe, enjoyable exercise. Following an easy maintenance routine will prevent premature wear and unnecessary parts replacement.

1. Check all fasteners, nuts and bolts, and caps to see that they are tight and fitted properly.
2. Lubricate all moving parts frequently to keep handles and other parts moving smoothly and eliminate squeaks and excessive noise.
3. Painted surfaces can be cleaned with a soft cloth and a mild, non-abrasive detergent.

ORDERING PARTS

Weider is dedicated to insure that each product is manufactured to the highest standards and that this product reaches the customer in the best possible condition. In the event that you find any problem in workmanship or missing parts please call our toll free product service number: 1-800-225-0653.

Weider provides replacement parts at no charge to the customer for one year if it is determined that the part was defective from the manufacturer or if any part is missing from the original, un-opened carton.

If it becomes necessary to order replacement parts the following action and information is required:

1. Your Owner's I.D. card must be returned to us to verify the product you have purchased, your name, address, and the date of your purchase. No charge replacement parts will not be sent without this information on file with our Parts Department.

2. Parts may be ordered using the parts order card which is included with this product or by calling our product service number: 1-800-225-0653.

3. Before ordering parts by phone have ready the following information to expedite your order:

- a. Name of the product (ULTRA MAX)
- b. Model number of product (1033)
- c. Serial number of the product located on a decal on the frame
(See front cover for location of decal)
- d. Ordering number of part (See Parts List page.)
- e. Description of the part from the Parts List page
- f. Country of manufacturer (See cover.)

The same information is required when placing your order by mail.

If you need parts or assistance do not return this product to the store, simply contact Weider Customer Assistance at 1-800-225-0653 Monday - Friday 8 a.m. - 5 p.m. CST.

All parts and service inquiries should be directed to:

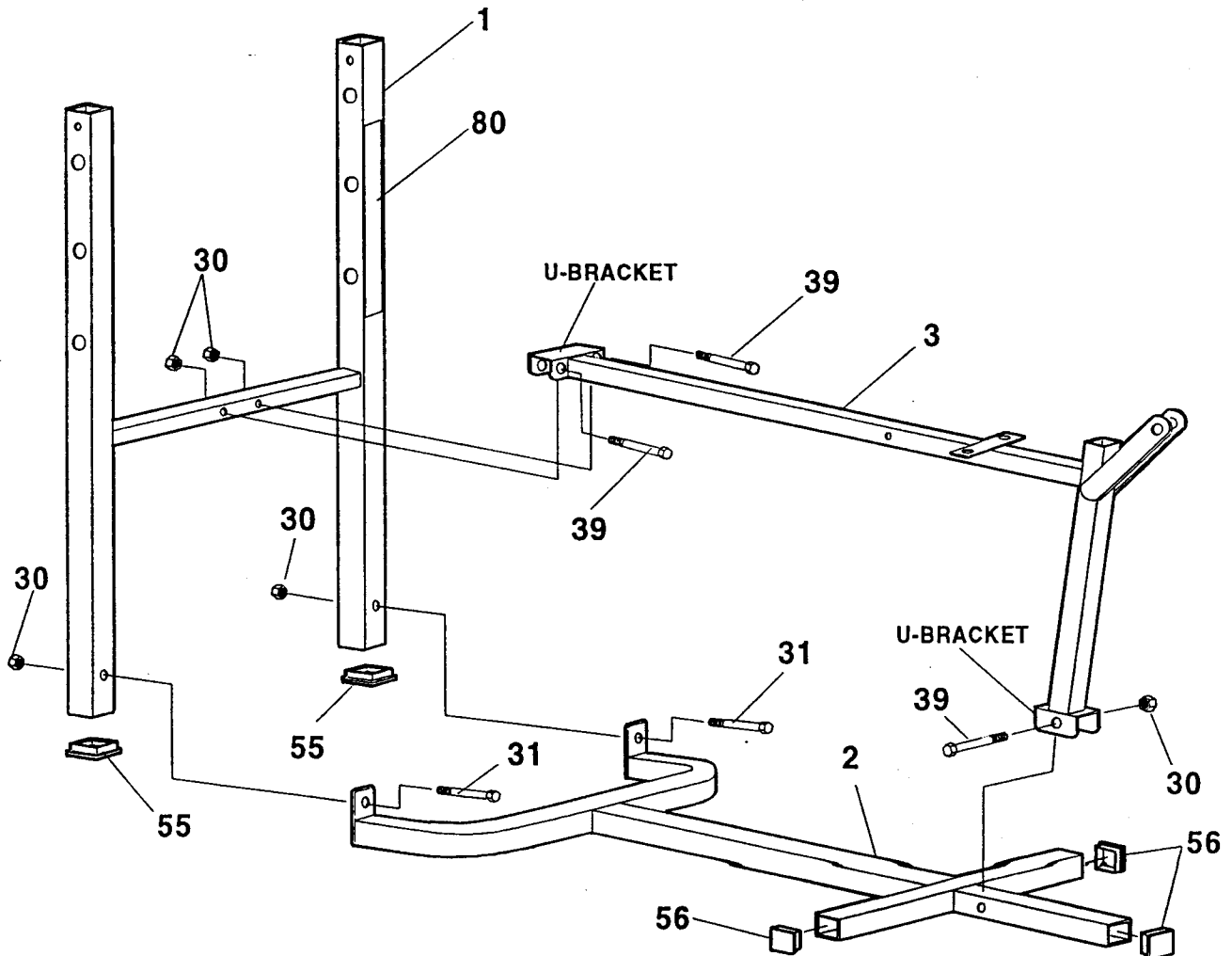
Weider Sporting Goods
Parts Service Department
900 West St. John Street
Olney, Illinois 62450

STEP 1 FRAME ASSEMBLY

PART NAME	QTY
30 5/16" NYLON LOCK NUT	5
31 5/16" X 2 1/2" HEX HEAD BOLT	2
39 5/16" X 2 1/4" HEX HEAD BOLT	3
55 2" SQUARE PLASTIC INSERT CAP	2
56 1 1/2" SQUARE PLASTIC INSERT CAP	3

- Begin by pressing 2" SQUARE PLASTIC INSERT CAPS (55) into the bottom ends of the UPRIGHT (1).
- Align the BASE FRAME (2) with the UPRIGHT (1) and secure using 5/16" X 2 1/2" HEX HEAD BOLTS (31) to bolt through the bracket of the Base Frame and into the front of the Upright. Secure with 5/16" NYLON LOCK NUTS (30).

- Assemble the MAIN FRAME (3) to the UPRIGHT (1) and BASE FRAME (2) by positioning the rear U-bracket of the Main Frame over the cross-member tube of the Upright and positioning the front U-bracket over the Base Frame tube.
- Secure the rear U-bracket at the UPRIGHT (1) using 5/16" X 2 1/4" HEX HEAD BOLTS (39) to bolt through the U-bracket and then through the front of the Upright. Secure with 5/16" NYLON LOCK NUTS (30).
- Secure the front U-bracket at the BASE FRAME (2) using a 5/16" X 2 1/4" HEX HEAD BOLT (39) and bolting through the U-bracket and then through the Base Frame. Secure with a 5/16" NYLON LOCK NUT (30).
- Press 1 1/2" SQUARE PLASTIC INSERT CAPS (56) onto the ends of the BASE FRAME (2).
- Remove the backing from the UPRIGHT DECAL (80) and affix to the front of one side of the UPRIGHT (1).



STEP 2 BACKREST & SEAT ASSEMBLY

PART NAME	QTY
30 5/16" NYLON LOCK NUT	1
32 5/16" X 3 1/4" HEX HEAD BOLT	1
41 1/4" X 3/4" ROUND HEAD MACHINE SCREW	6
65 5/16" I.D. X 13/32" LONG METAL SPACER	2

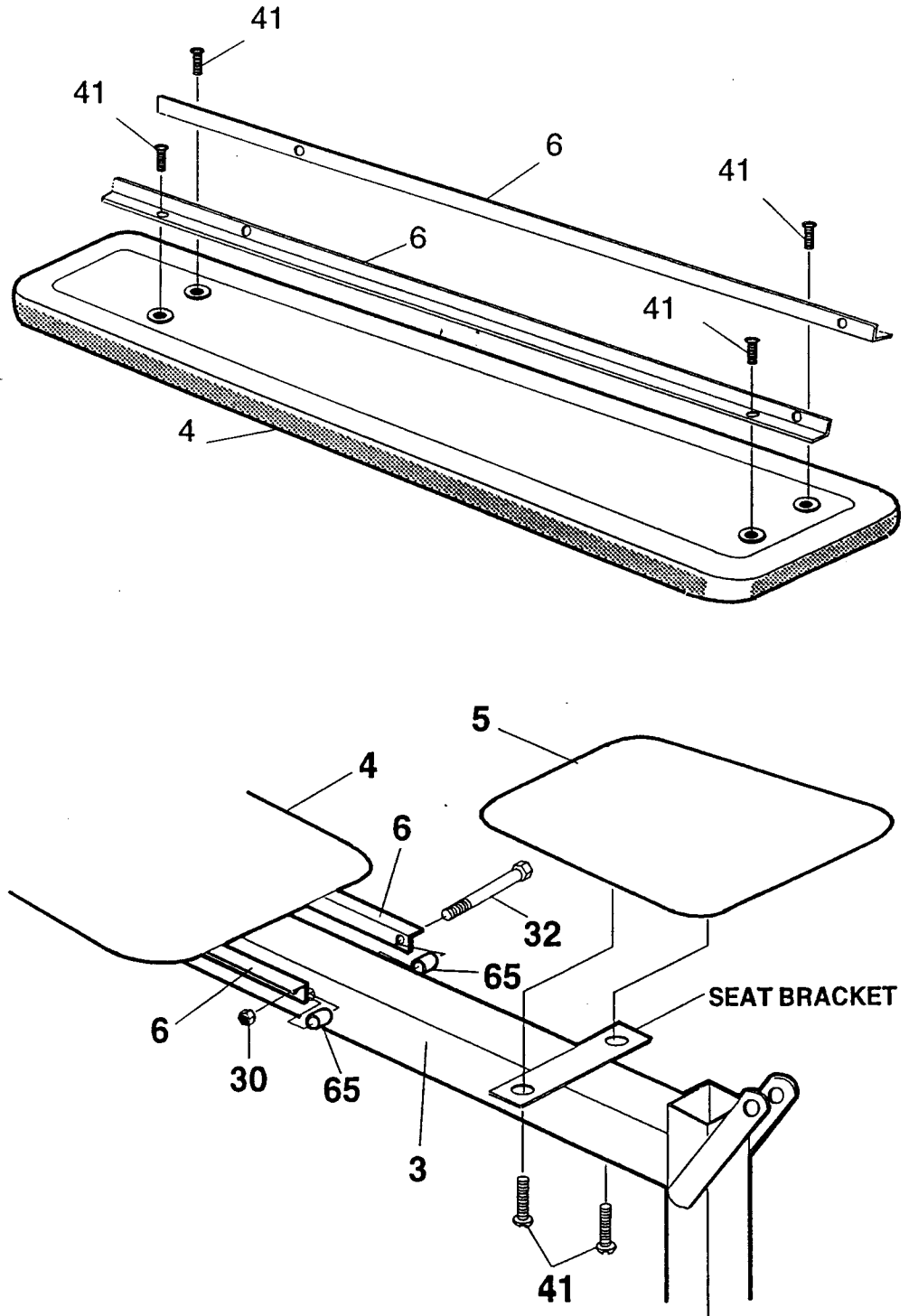
Turn the BACKREST (4) over to expose the threaded holes. Position the LONG ANGLE IRONS (6) so that the flat side faces the inside of the Backrest. Fasten with 1/4" X 3/4" ROUND HEAD MACHINE SCREWS (41). DO NOT COMPLETELY TIGHTEN THESE SCREWS AT THIS TIME!

The bottom end of the BACKREST (4) is the end that the LONG ANGLE IRONS (6) extend past. This is the end that is assembled to the MAIN FRAME (3).

Straddle the LONG ANGLE IRONS (6) on the BACKREST (4) over the bolt hole location on the MAIN FRAME (3). Assemble a 5/16" X 3 1/4" HEX HEAD BOLT (32) into the large hole at the very end of one of the Long Angle Irons and then into a 5/16" I.D. X 13/32" LONG METAL SPACER (65). The Hex Head Bolt will then go all the way through the Main Frame. As the Bolt comes out of the Main Frame on the other side, place another 13/32" LONG METAL SPACER (65) onto the Bolt and push the Bolt the rest of the way through into the opposite Long Angle Iron. Secure with a 5/16" NYLON LOCK NUT (30).

TIGHTEN ALL SCREWS ON THE BACK OF THE BACKREST AT THIS TIME.

Align the SEAT (5) onto the Seat Bracket on the MAIN FRAME (3) and attach with 1/4" X 3/4" ROUND HEAD MACHINE SCREWS (41) by bolting up through the Seat Bracket and then into the Seat.

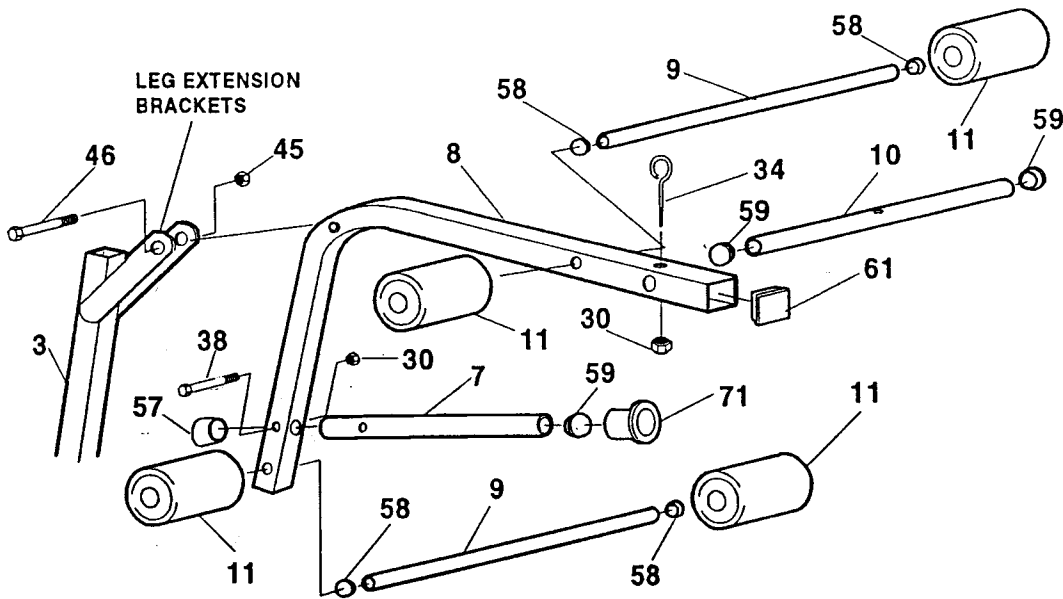


STEP 3 LEG EXTENSION ASSEMBLY

PART NAME	QTY
30 5/16" NYLON LOCK NUT	2
34 5/16" X 1 3/4" EYELET BOLT	1
38 5/16" X 2" HEX HEAD BOLT	1
45 3/8" NYLON LOCK NUT	1
46 3/8" X 2 1/2" HEX HEAD BOLT	1
57 1" ROUND PLASTIC COVER CAP	1
58 3/4" ROUND PLASTIC INSERT CAP	4
59 1" ROUND PLASTIC INSERT CAP	3
61 1 1/2" SQUARE PLASTIC INSERT CAP (#240)	1
71 WEIGHT STOP	1

First, insert the WEIGHT PIN (7) through the angled hole in the lower front of the LEG EXTENSION (8). Align the bolt holes and secure using a 5/16" X 2" HEX HEAD BOLT (38) to bolt through the Leg Extension and then through the Weight Pin. Secure with a 5/16" NYLON LOCK NUT (30).

Place a 1" ROUND PLASTIC COVER CAP - 15' (57) over the rear extended portion of the WEIGHT PIN (7). Slide a WEIGHT STOP (71) (flared side out) over the Weight Pin until it is against the LEG EXTENSION (8) Frame. Press a 1" ROUND PLASTIC INSERT CAP (59) into the end of the tube.



Insert a 1 1/2" SQUARE PLASTIC INSERT CAP (#240 - 14-16 GA. - WRITTEN INSIDE) (61) into the upper end of the LEG EXTENSION (8).

Position the LEG EXTENSION (8) between the Leg Extension Brackets on the MAIN FRAME (3). Secure using a 3/8" X 2 1/2" HEX HEAD BOLT (46) to bolt through the Bracket and then through the Leg Extension. Secure with a 3/8" NYLON LOCK NUT (45). DO NOT OVER TIGHTEN OR THE LEG EXTENSION WILL NOT BE ABLE TO SWING FREELY!

Select the WEIGHT BAR (10) - a round tube 1" in diameter and 12" long with a hole in the center. Press 1" ROUND PLASTIC INSERT CAPS (59) into the ends of the tube. Assemble the Weight Bar into the large hole at the very end of the LEG EXTENSION (8). Align the bolt holes and secure using a 5/16" X 1 3/4" EYELET BOLT (34) to bolt through the top of the Leg Extension and then through the Weight Bar. Secure with a 5/16" NYLON LOCK NUT (30).

Select the two PAD BARS (9) - round tubes 3/4" in diameter and 13 1/4" long. Press 3/4" ROUND PLASTIC INSERT CAPS (58) into both ends of the tubes.

» NOTE: To each end of the PAD BARS (9), wipe a small amount of liquid dish detergent along the length of the Bars. This helps in the assembly of the Foam Roller Pads. When the detergent dries, it acts as an adhesive.

Onto one end of each PAD BAR (9), press a 3" X 5 1/2" FOAM ROLLER PAD (11).

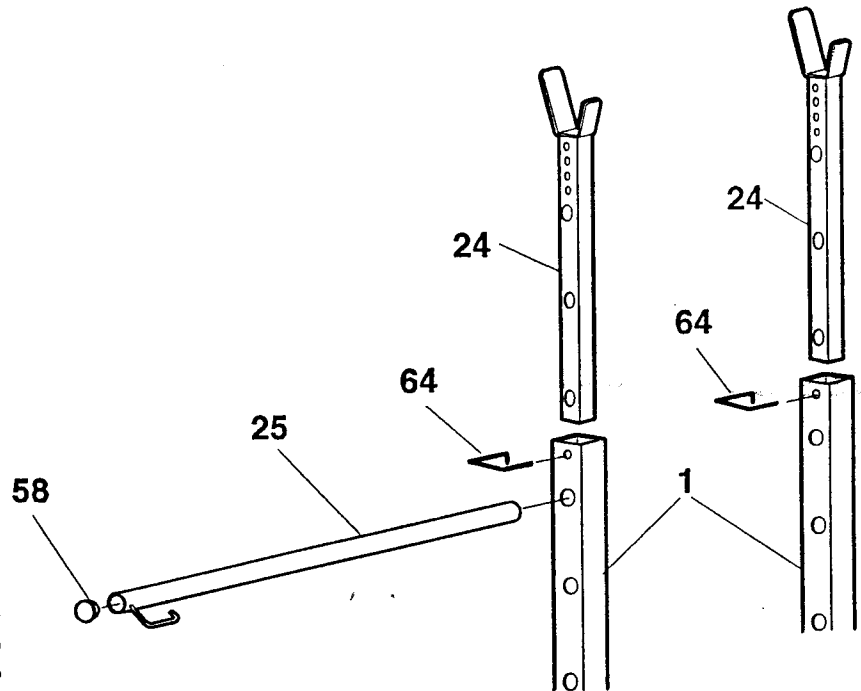
Assemble one PAD BAR (9) into the lower hole location on the LEG EXTENSION (8). Assemble another 3" X 5 1/2" FOAM ROLLER PAD (11) onto the opposite end of the Bar.

Assemble the other PAD BAR (9) into the hole location on the upper LEG EXTENSION (8). Assemble another 3" X 5 1/2" FOAM ROLLER PAD (11) onto the opposite end of the Bar.

STEP 4 ADJUSTABLE UPRIGHT ASSEMBLY

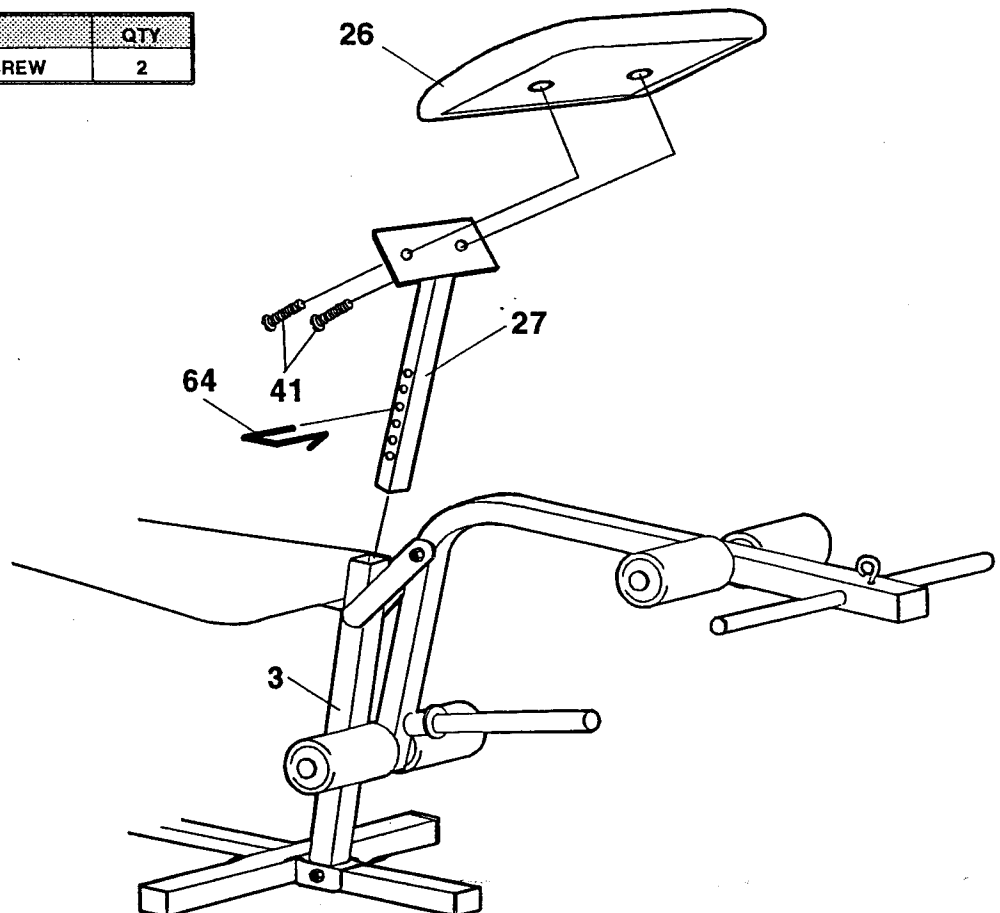
PART NAME	QTY
58 3/4" ROUND PLASTIC INSERT CAP	1
64 LOCKING PIN - SMALL	2

- Insert the ADJUSTABLE UPRIGHT (24) into the UPRIGHT (1).
- Use LOCKING PINS - SMALL (64) to adjust the height of the ADJUSTABLE UPRIGHTS (24).
- Press a 3/4" ROUND PLASTIC INSERT CAP (58) into the handle end of the BACKREST ADJ BAR (25). Slide the Backrest Adj Bar into any of the hole patterns on the UPRIGHT (1). This Bar is used to adjust the incline of the BACKREST (4) and the height of the ADJUSTABLE UPRIGHTS (24) when using the Backrest in an incline position. When the Backrest is in the flat position, the height of the Adjustable Uprights can be adjusted by the use of the LOCKING PINS - SMALL (64).

**STEP 5 ARM CURL ASSEMBLY**

PART NAME	QTY
41 1/4" X 3/4" ROUND HEAD MACHINE SCREW	2

- Assemble the ARM CURL PAD (26) to the PAD SUPPORT (27) using 1/4" X 3/4" ROUND HEAD MACHINE SCREWS (41) to bolt through the Support and into the Pad.
- To use the Arm Curl Pad, insert the PAD SUPPORT (27) into the top of the MAIN FRAME (3) and adjust to the desired height by inserting a LOCKING PIN - SMALL (64) into the appropriate hole and allowing it to rest on top of the Frame. (You will need to use one of the Locking Pins from the Adjustable Uprights.)

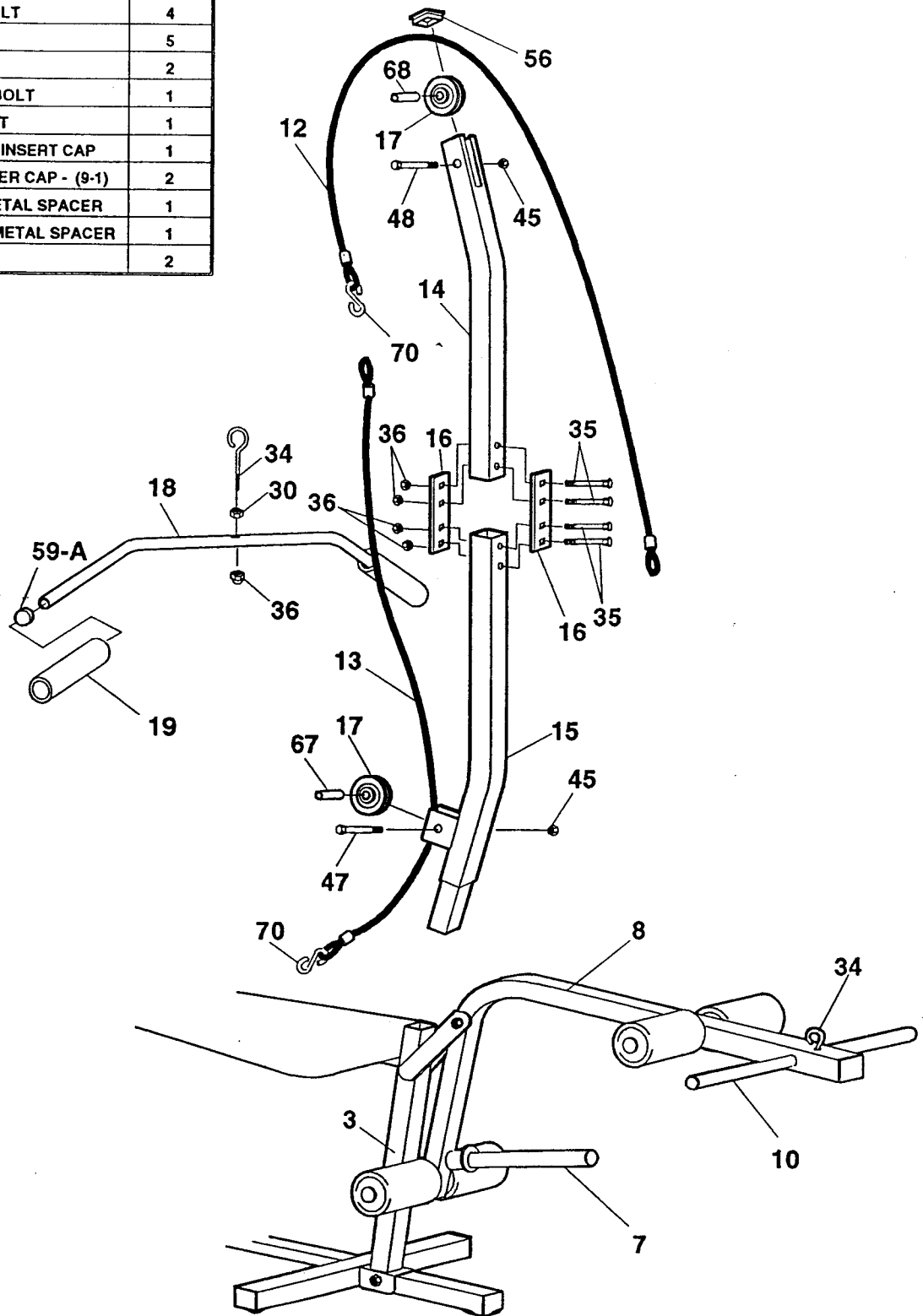


STEP 6 MAST ASSEMBLY

PART NAME	QTY
30 5/16" NYLON LOCK NUT	1
34 5/16" X 1 3/4" EYELET BOLT	1
35 5/16" X 2" CARRIAGE BOLT	4
36 5/16" ACORN NUT	5
45 3/8" NYLON LOCK NUT	2
47 3/8" X 1 1/2" HEX HEAD BOLT	1
48 3/8" X 2" HEX HEAD BOLT	1
56 1 1/2" SQUARE PLASTIC INSERT CAP	1
59-A 1" ROUND PLASTIC COVER CAP - (9-1)	2
67 1/2" O.D. X 3/4" LONG METAL SPACER	1
68 1/2" O.D. X 1 3/8" LONG METAL SPACER	1
70 S-HOOK	2

Connect the MAST TOP SECTION (14) and the MAST BOTTOM SECTION (15) using MAST CONNECTOR PLATES (16) and securing with 5/16" X 2" CARRIAGE BOLTS (35) by bolting through the Plates and then through the Mast Sections. Fasten with 5/16" ACORN NUTS (36).

Insert a 1/2" O.D. X 3/4" LONG METAL SPACER (67) into the PULLEY (17). Drape the SHORT CABLE (13) over the Pulley and assemble the Pulley into the Pulley Plates at the bottom of the MAST BOTTOM SECTION (15), trapping the Cable behind the Pulley. Secure in place using a 3/8" X 1 1/2" HEX HEAD BOLT (47) and bolting through the Plates and into the Pulley. Secure with a 3/8" NYLON LOCK NUT (45).



- Insert a 1/2" O.D. X 1 3/8" LONG METAL SPACER (68) into a PULLEY (17). Insert the Pulley into the top of the TOP MAST SECTION (14) and using a 3/8" X 2" HEX HEAD BOLT (48), bolt in place by bolting through the top of the Mast and then through the Pulley. Secure with a 3/8" NYLON LOCK NUT (45).
- Drape the LONG CABLE (12) over the PULLEY (17).
- Cap the top of the MAST TOP SECTION (14) with a 1 1/2" SQUARE PLASTIC INSERT CAP (56).
- Press 1" ROUND PLASTIC COVER CAPS - (9-1 Written Inside) (59-A) into each end of the LAT BAR (18). Apply a small amount of liquid dish detergent to each end of the Lat Bar and assemble the FOAM GRIPS (19) onto each end of the Lat Bar.
- Thread a 5/16" NYLON LOCK NUT (30) onto an 5/16" X 1 3/4" EYELET BOLT (34) - all the way to the top of the threads - and then insert the Bolt down through the top of the center hole in the LAT BAR (18). Secure with a 5/16" ACORN NUT (36).
- Insert S-HOOKS (70) through the one loop end of each CABLE (12) and (13).

USING MAST ASSEMBLY

STEP 1 ROWING AND CURLS

Insert the Mast Assembly into the MAIN FRAME (3). Connect the loop of the LONG CABLE (12) into the 5/16" X 1 3/4" EYELET BOLT (34) on the LEG EXTENSION (8). Connect the S-HOOK (70) end of the LONG CABLE (12) to the loop end of the SHORT CABLE (13) and then connect the S-Hook end of the SHORT CABLE (13) to the LAT BAR (18). With this configuration, Rowing and Curl Exercises may be performed. Free weights can be loaded on either or both the WEIGHT PIN (7) or the WEIGHT BAR (10).

STEP 2 LAT PULL DOWNS

To do Lat Work, either sitting or standing; connect the LAT BAR (18) directly to the S-HOOK (70) end of the LONG CABLE (12). Load weight on either the Leg Extension WEIGHT PIN (7) or the WEIGHT BAR (10).

CAUTION

1. ALLOWING THE LEG EXTENSION TO FREE FALL OR BANG INTO THE FRONT LEG OF THE MAIN FRAME CAN CAUSE DAMAGE TO THE FRAME AND THE LEG EXTENSION. DO NOT EXCEED 100 LBS. OF WEIGHT.
2. WHEN WEIGHTS ARE USED ON THE LEG EXTENSION, THE SAME AMOUNT OF WEIGHT SHOULD BE ADDED TO THE REAR OF THE BENCH. THIS CAN BE DONE BY PLACING A WEIGHTED BARBELL ACROSS THE UPRIGHT OR HAVING YOUR TRAINING PARTNER STAND ON THE FRAME BASE.
3. USE LOCKING COLLARS FROM DUMBBELLS TO SECURE WEIGHTS ON THE LEG EXTENSION WEIGHT PINS.

STEP 7 BUTTERFLY ASSEMBLY

PART NAME	QTY
30 5/16" NYLON LOCK NUT	2
37 5/16" X 5" HEX HEAD BOLT	2
40 1/4" NYLON LOCK NUT	2
42 1/4" X 2" ROUND HEAD MACHINE SCREW	2
51 STOPPER PIN	2
56 1 1/2" SQUARE PLASTIC INSERT CAP	2
58 3/4" ROUND PLASTIC INSERT CAP	2
59 1" ROUND PLASTIC INSERT CAP	2
60 7/8" ROUND PLASTIC INSERT CAP	2
69 1/2" X 3" LONG PLASTIC SPACER	2
71 WEIGHT STOP	2
72 1 1/8" O.D. X 2" LONG PLASTIC SLEEVE	2

» There are two Butterfly attachments with this unit: a RIGHT BUTTERFLY (20) and a LEFT BUTTERFLY (21). Instructions are given for one and are repeated to assemble the other.

Assemble the end with the hole of the 3/4" X 9" BUTTERFLY PAD BAR (22) into the large hole in the side and at the upper end of the Butterfly Frame. (Assemble this into the side of the Frame which does not have the welded round tube.) Aligning bolt holes and using a 1/4" X 2" MACHINE SCREW (42), bolt down through the top of the Butterfly Frame and then through the Butterfly Pad Bar. Secure with a 1/4" NYLON LOCK NUT (40).

Press a 3/4" ROUND PLASTIC INSERT CAP (58) into the end of the BUTTERFLY PAD BAR (22). Slide a 3" X 5 1/2" FOAM ROLLER PAD (11) onto the end of the Butterfly Pad Bar. Again a small amount of liquid dish detergent will help with this assembly.

At the other end of the Butterfly Frame, there is a large angled hole on the inside of the Frame. Assemble the end of the BUTTERFLY WEIGHT PIN - 1" X 10 1/2" (23) with the hole, into the large hole on the inside of the Frame. Using a 5/16" X 5" HEX HEAD BOLT (37), bolt through the Butterfly Frame and then through the Weight Pin. Assemble a 1/2" X 3" LONG PLASTIC SPACER (69) onto the Bolt end and secure with a 5/16" NYLON LOCK NUT (30).

Press a 1" ROUND PLASTIC INSERT CAP (59) into the end of the WEIGHT PIN (23). Slide a WEIGHT STOP (71) over the Weight Pin until it is against the Butterfly Frame.

Assemble a 1 1/8" O.D. X 2" LONG PLASTIC SLEEVE (72) over the Welded Round Tube on the Butterfly Frame.

Slide the entire assembly now into the Welded Tube Bracket on the UPRIGHT (1).

Insert the STOPPER PIN (51) into the center of the assembly (rounded end first), making sure the side of the Stopper Pin that has a raised section is aligned with the hole in the Welded Butterfly Round Tube. Push the Stopper Pin into the Welded Butterfly Tube until it clicks into place as the raised section exits the hole.

Press a 7/8" ROUND PLASTIC INSERT CAP (60) into the Welded Butterfly Round Tube.

Press a 1 1/2" SQUARE PLASTIC INSERT CAP (56) into the top end of the Butterfly Frame.

