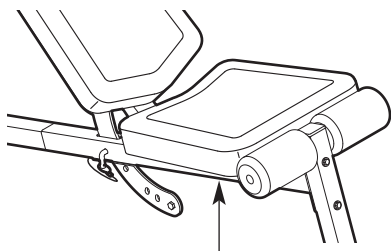


# WEIDER® 150 TC

**Model No. WEEVBE5909.0**

**Serial No. \_\_\_\_\_**

Write the serial number in the space above for reference.



Serial Number Decal (under seat)

## USER'S MANUAL

### QUESTIONS?

If you have questions, or if there are missing parts, please contact us:

**Call: 08457 089 009**

**From Ireland: 053 92 36102**

**Website: [www.iconsupport.eu](http://www.iconsupport.eu)**

**E-mail: Visit [www.iconsupport.eu](http://www.iconsupport.eu)**

**Write:**

**ICON Health & Fitness, Ltd.**

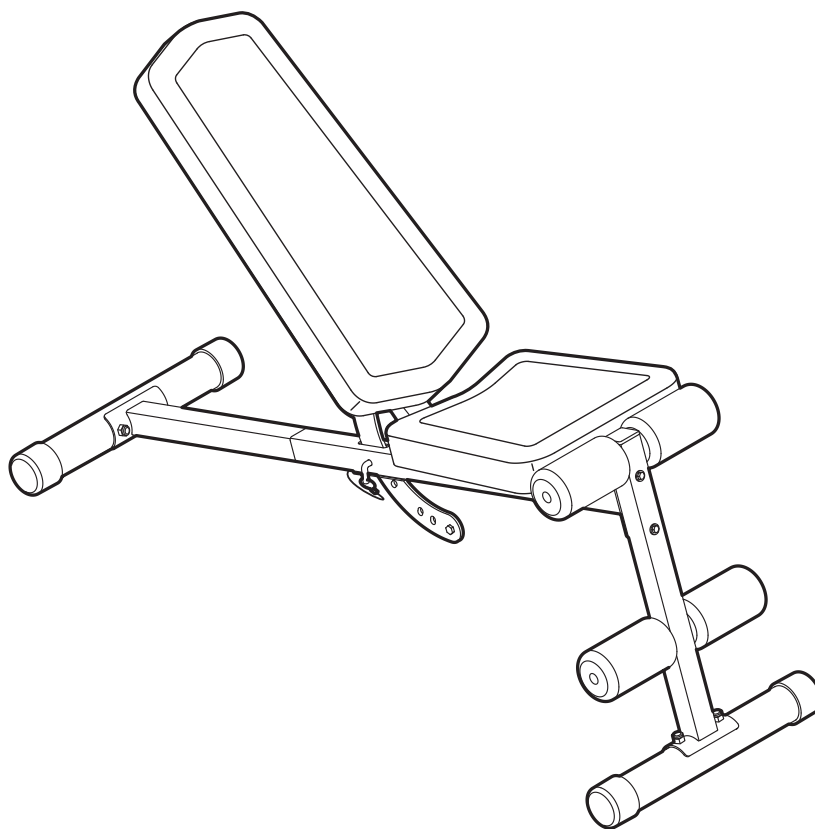
**c/o HI Group PLC**

**Express Way**

**Whitwood, West Yorkshire**

**WF10 5QJ**

**UK**



### CAUTION

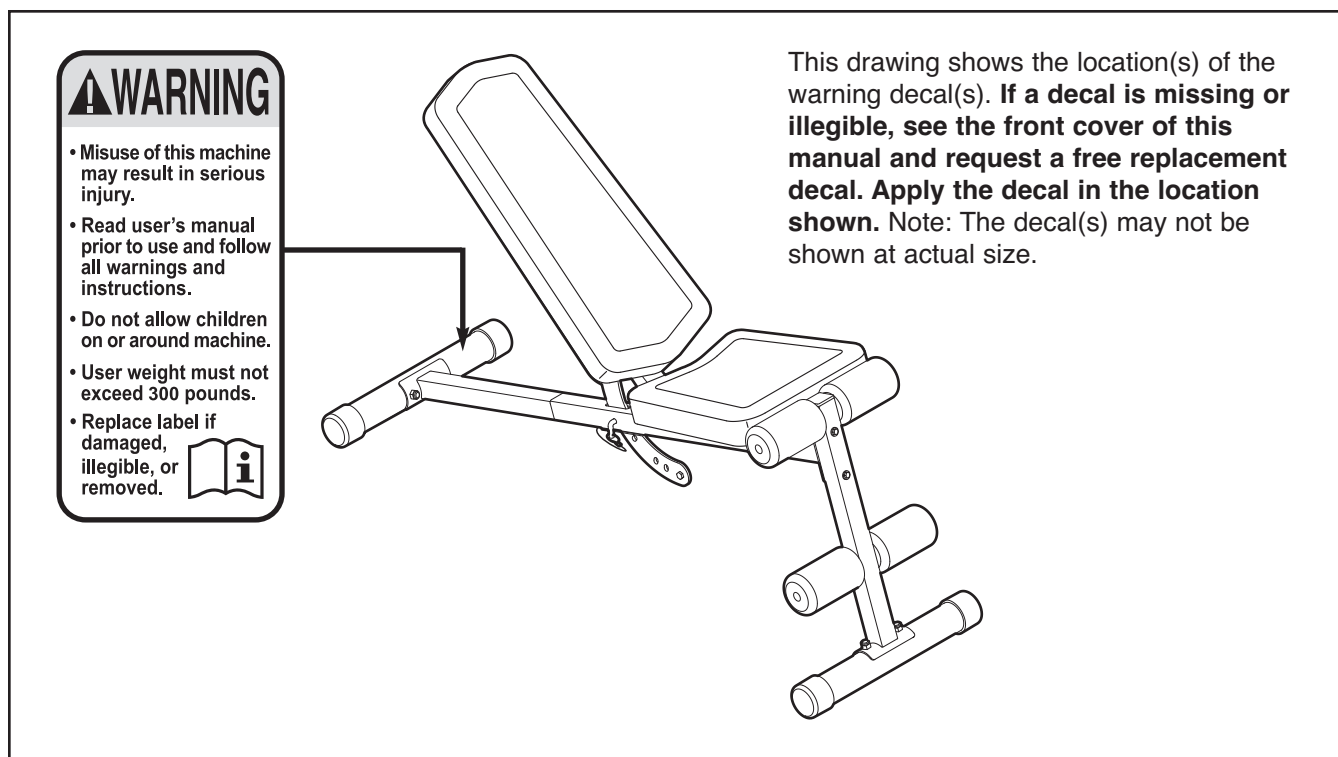
**Read all precautions and instructions in this manual before using this equipment. Save this manual for future reference.**

[www.iconeurope.com](http://www.iconeurope.com)

# TABLE OF CONTENTS

WARNING DECAL PLACEMENT .....	2
IMPORTANT PRECAUTIONS .....	3
BEFORE YOU BEGIN .....	4
PART IDENTIFICATION CHART .....	5
ASSEMBLY .....	6
ADJUSTMENT .....	9
EXERCISE GUIDELINES .....	9
PART LIST .....	10
EXPLODED DRAWING .....	11
ORDERING REPLACEMENT PARTS .....	Back Cover

## WARNING DECAL PLACEMENT



# IMPORTANT PRECAUTIONS

**⚠️ WARNING:** To reduce the risk of serious injury, read all important precautions and instructions in this manual and all warnings on your weight bench before using your weight bench. ICON assumes no responsibility for personal injury or property damage sustained by or through the use of this product.

1. Before beginning any exercise program, consult your physician. This is especially important for persons over age 35 or persons with pre-existing health problems.
2. It is the responsibility of the owner to ensure that all users of the weight bench are adequately informed of all precautions.
3. The weight bench is intended for home use only. Do not use the weight bench in a commercial, rental, or institutional setting.
4. Use the weight bench only on a level surface. Cover the floor beneath the weight bench to protect the floor.
5. Inspect and properly tighten all parts regularly. Replace any worn parts immediately.
6. Keep children under age 12 and pets away from the weight bench at all times.
7. The weight bench is designed to support a maximum weight of 410 lbs. (186 kg) including a maximum user weight of 300 lbs. (136 kg). Do not use more than 110 lbs. (50 kg) of weight with the weight bench. Note: The weight bench does not include weights.
8. Wear appropriate exercise clothes while exercising; do not wear loose clothes that could become caught on the weight bench. Always wear athletic shoes for foot protection while exercising.
9. Keep hands and feet away from moving parts.
10. Always make sure that the locking pin is fully inserted into the frame and the pivot bracket before you exercise.
11. Over exercising may result in serious injury or death. If you feel faint or if you experience pain while exercising, stop immediately and cool down.
12. Use the weight bench only as described in this manual.

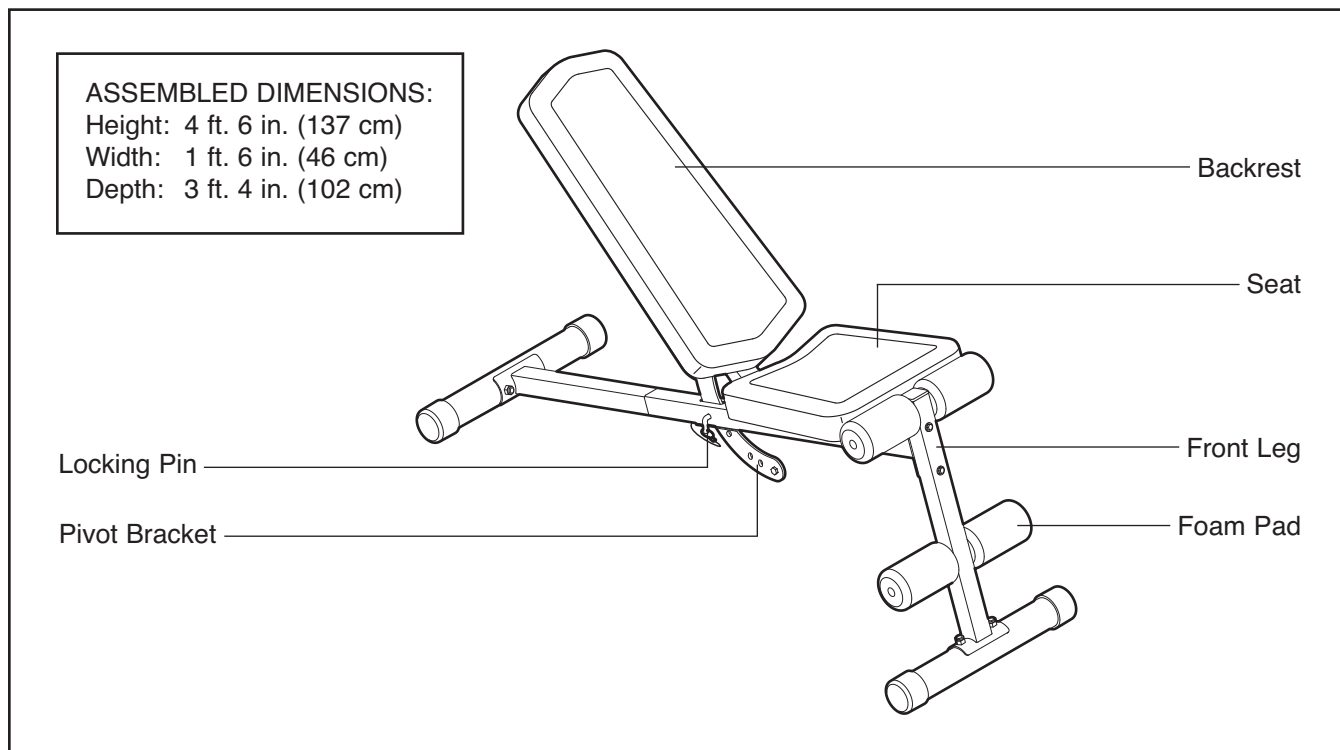
# BEFORE YOU BEGIN

Thank you for selecting the versatile WEIDER® 150 TC weight bench. The 150 TC weight bench is designed to help develop the major muscle groups of the upper body. Whether your goal is to tone your body, build dramatic muscle size and strength, or improve your cardiovascular system, the weight bench will help you to achieve the specific results you want.

**For your benefit, read this manual carefully before you use the weight bench.** If you have questions

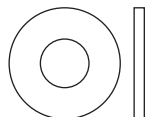
after reading this manual, please see the front cover of this manual. To help us assist you, note the product model number and serial number before contacting us. The model number and the location of the serial number decal are shown on the front cover of this manual.

Before reading further, please familiarize yourself with the parts that are labeled in the drawing below.



# PART IDENTIFICATION CHART

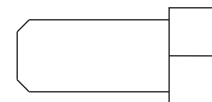
Refer to the drawings below to identify small parts used in assembly. The number in parentheses by each drawing is the key number of the part, from the PART LIST near the end of this manual. **Note: If a part is not in the hardware kit, check to see if it has been preattached.**



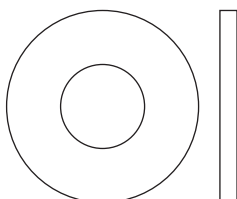
M6 Washer (22)



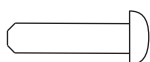
M10 Locknut (19)



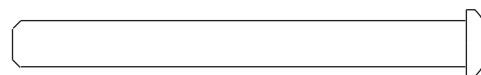
M10 x 20mm Bolt (25)



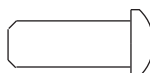
M10 Washer (20)



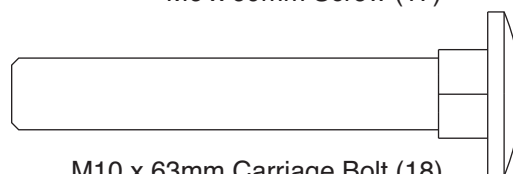
M4 x 16mm  
Screw (28)



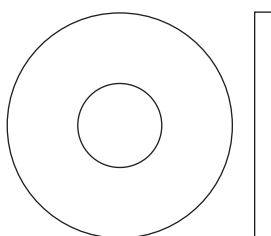
M6 x 60mm Screw (17)



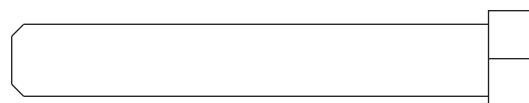
M6 x 16mm  
Screw (24)



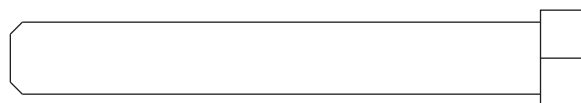
M10 x 63mm Carriage Bolt (18)



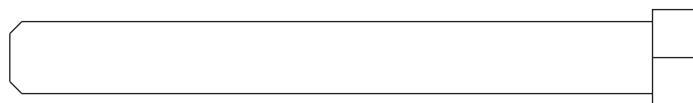
M10 Large Washer (27)



M10 x 63mm Bolt (16)



M10 x 70mm Bolt (26)



M10 x 85mm Bolt (23)

# ASSEMBLY

**To make assembly easier, carefully read the following information and instructions:**

- Assembly requires two persons.
- Because of its weight and size, the weight bench should be assembled in the location where it will be used. Make sure that there is enough clearance to walk around the weight bench as you assemble it.
- Place all parts in a cleared area and remove the packing materials. Do not dispose of the packing materials until assembly is completed.
- For help identifying small parts, use the PART IDENTIFICATION CHART on page 5.

- The following tools (not included) may be required for assembly:

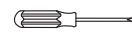
two adjustable wrenches



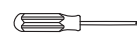
one rubber mallet



one standard screwdriver



one Phillips screwdriver



Assembly may be more convenient if you have a socket set, a set of open-end or closed-end wrenches, or a set of ratchet wrenches.

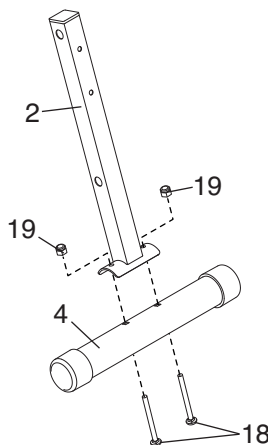
1.

**To make assembly easier, make sure that you understand the information in the box above.**

Locate the Stabilizer (4) without the warning decal.

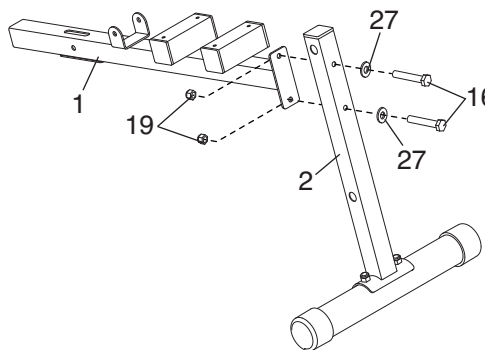
Attach the Stabilizer (4) to the Front Leg (2) with two M10 x 63mm Carriage Bolts (18) and two M10 Locknuts (19). **Do not tighten the Locknuts yet.**

1



2. Attach the Frame (1) to the Front Leg (2) with two M10 x 63mm Bolts (16), two M10 Large Washers (27), and two M10 Locknuts (19). **Do not tighten the Locknuts yet.**

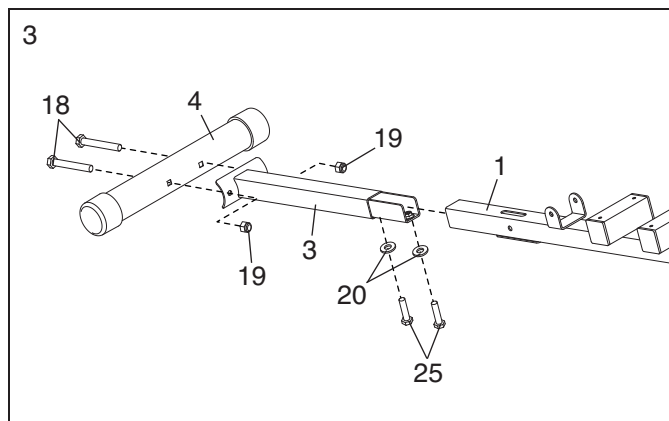
2



3. Attach the other Stabilizer (4) to the Rear Leg (3) with two M10 x 63mm Carriage Bolts (18) and two M10 Locknuts (19). **Do not tighten the Locknuts yet.**

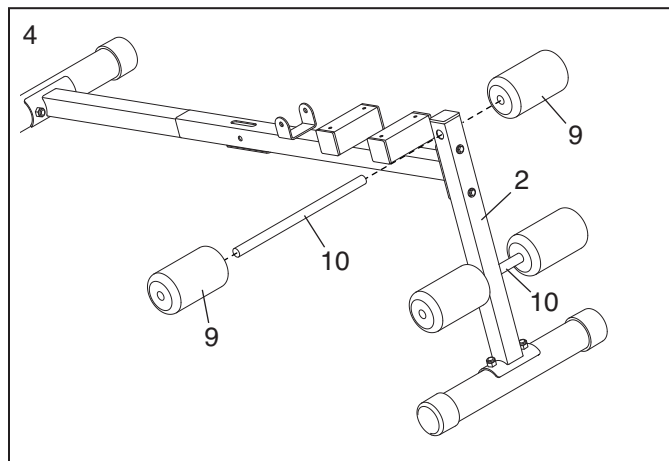
Attach the Rear Leg (3) to the Frame (1) with two M10 x 20mm Bolts (25) and two M10 Washers (20).

**See steps 1–3.** Tighten the M10 Locknuts (19).



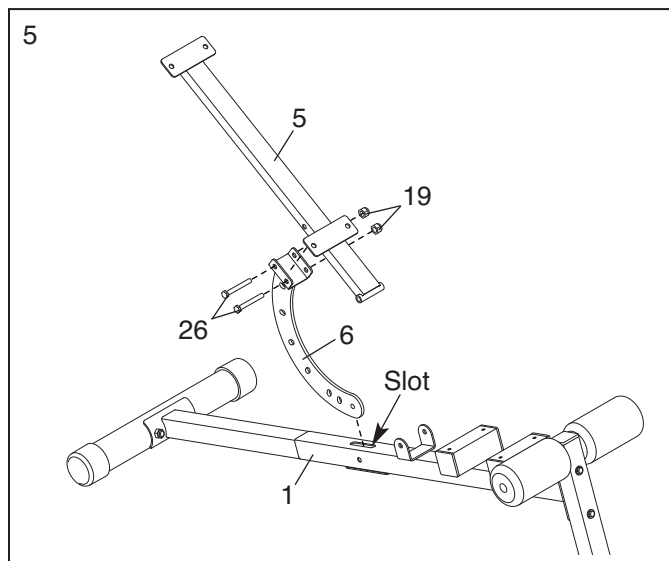
4. Insert a Pad Tube (10) into the Front Leg (2). Wet the ends of the Pad Tube with soapy water, and slide a Foam Pad (9) onto each end of the Pad Tube.

**Repeat this step with the other Pad Tube (10).**



5. Attach the Pivot Bracket (6) to the Backrest Frame (5) with two M10 x 70mm Bolts (26) and two M10 Locknuts (19). **Do not tighten the Locknuts yet.**

Insert the Pivot Bracket (6) into the slot in the Frame (1).

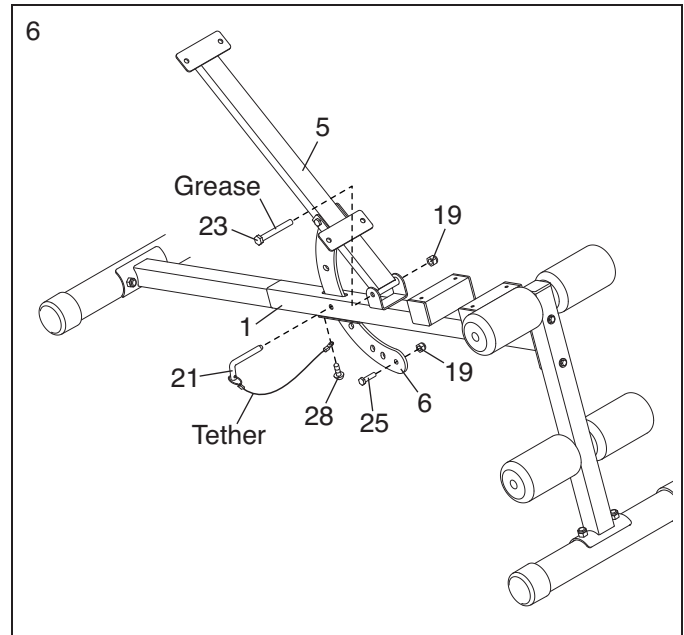


6. Apply some of the included grease to an M10 x 85mm Bolt (23). Attach the Backrest Frame (5) to the Frame (1) with the Bolt and an M10 Locknut (19). **Do not overtighten the Locknut; the Backrest Frame must pivot easily.**

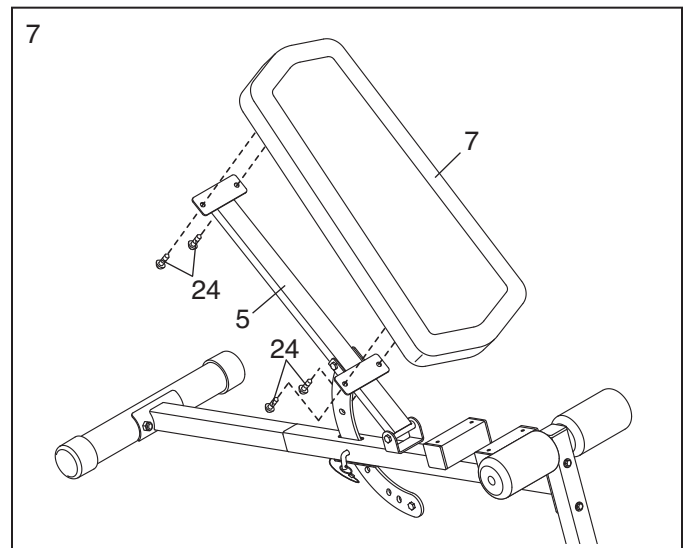
Attach the tether on the Locking Pin (21) to the bottom of the Frame (1) with an M4 x 16mm Screw (28). Next, insert the Locking Pin into the Frame and into an adjustment hole in the Pivot Bracket (6).

Attach an M10 x 20mm Bolt (25) and an M10 Locknut (19) to the hole in the end of the Pivot Bracket (6).

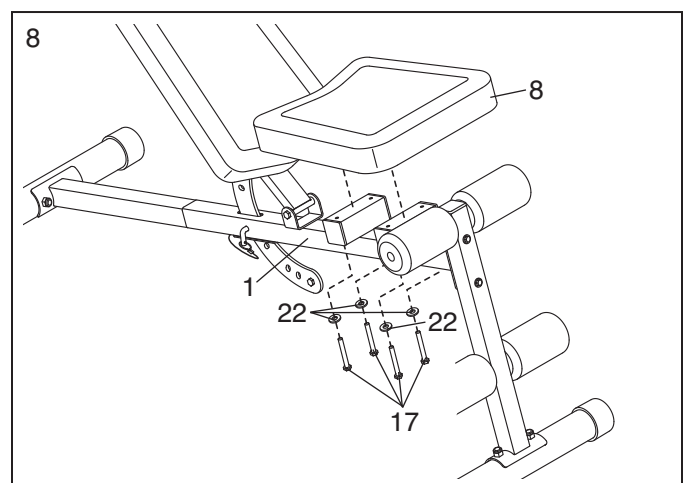
**See step 5.** Tighten the M10 Locknuts (19).



7. **Orient the Backrest (7) as shown.** Attach the Backrest to the Backrest Frame (5) with four M6 x 16mm Screws (24).



8. Attach the Seat (8) to the Frame (1) with four M6 x 60mm Screws (17) and four M6 Washers (22).



9. **Make sure that all parts are properly tightened before you use the weight bench.**



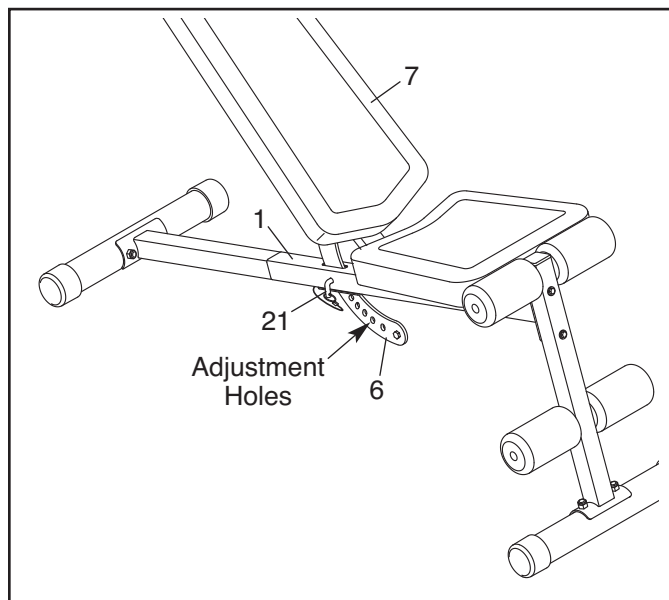
# ADJUSTMENT

## ADJUSTING THE BACKREST

The Backrest (7) can be used in a declined position, a level position, or any of four inclined positions.

To adjust the Backrest, first remove the Locking Pin (21) from the Frame (1). Move the Backrest to the desired position, and reinsert the Locking Pin into the Frame and an adjustment hole in the Pivot Bracket (6).

**WARNING:** Make sure that the Locking Pin (21) is fully inserted into the Frame (1) and the Pivot Bracket (6).



# EXERCISE GUIDELINES

## FOUR TYPES OF STRENGTH WORKOUTS

Note: A “repetition” is one complete cycle of an exercise, such as one sit-up. A “set” is a series of repetitions.

**Muscle Building**—Work your muscles near their maximum capacity and progressively increase the intensity of your exercise. Adjust the intensity level of an individual exercise as follows:

- Change the amount of resistance used.
- Change the number of repetitions or sets performed.

Use your own judgment to determine the amount of resistance that is right for you. Begin with 3 sets of 8 repetitions for each exercise you perform. Rest for 3 minutes after each set. When you can complete 3 sets of 12 repetitions without difficulty, increase the amount of resistance.

**Toning**—Tone your muscles by working them to a moderate percentage of their capacity. Select a moderate amount of resistance and increase the number of repetitions in each set. Complete as many sets of 15 to 20 repetitions as possible without discomfort. Rest for 1 minute after each set. Work your muscles by completing more sets rather than by using high amounts of resistance.

**Weight Loss**—To lose weight, use a low amount of resistance and increase the number of repetitions in each set. Exercise for 20 to 30 minutes, resting for a maximum of 30 seconds between sets.

**Cross Training**—Combine strength training and aerobic exercise by following this type of program:

- Strength training workouts on Monday, Wednesday, and Friday.
- 20 to 30 minutes of aerobic exercise on Tuesday and Thursday.
- One full day of rest each week to give your body time to regenerate.

## WORKOUT GUIDELINES

Familiarize yourself with the equipment and learn the proper form for each exercise. Use your own judgment to determine the appropriate length of time for each workout, and the numbers of repetitions and sets to complete. Progress at your own pace and be sensitive to your body's signals. Follow each workout with at least one day of rest.

**Warming Up**—Start with 5 to 10 minutes of stretching and light exercise. A warm-up increases your body temperature, heart rate, and circulation in preparation for exercise.

**Working Out**—Include 6 to 10 different exercises in each workout. Select exercises for every major muscle group, emphasizing areas that you want to develop. To give balance and variety to your workouts, vary the exercises from workout to workout.

**Cooling Down**—Finish with 5 to 10 minutes of stretching. Stretching increases the flexibility of your muscles and helps to prevent post-exercise problems.

## EXERCISE FORM

Move through the full range of motion for each exercise and move only the appropriate parts of the body. Perform the repetitions in each set smoothly and without pausing. The exertion stage of each repetition should last about half as long as the return stage. Exhale during the exertion stage of each repetition and inhale during the return stroke. Never hold your breath.

Rest for a short period of time after each set:

- Muscle Building—Rest for three minutes after each set.
- Toning—Rest for one minute after each set.
- Weight Loss—Rest for 30 seconds after each set.

## STAYING MOTIVATED

For motivation, keep a record of each workout. Write the date, the exercises performed, the resistance used, and the numbers of sets and repetitions completed. Record your weight and key body measurements once a month. To achieve good results, make exercise a regular and enjoyable part of your life.

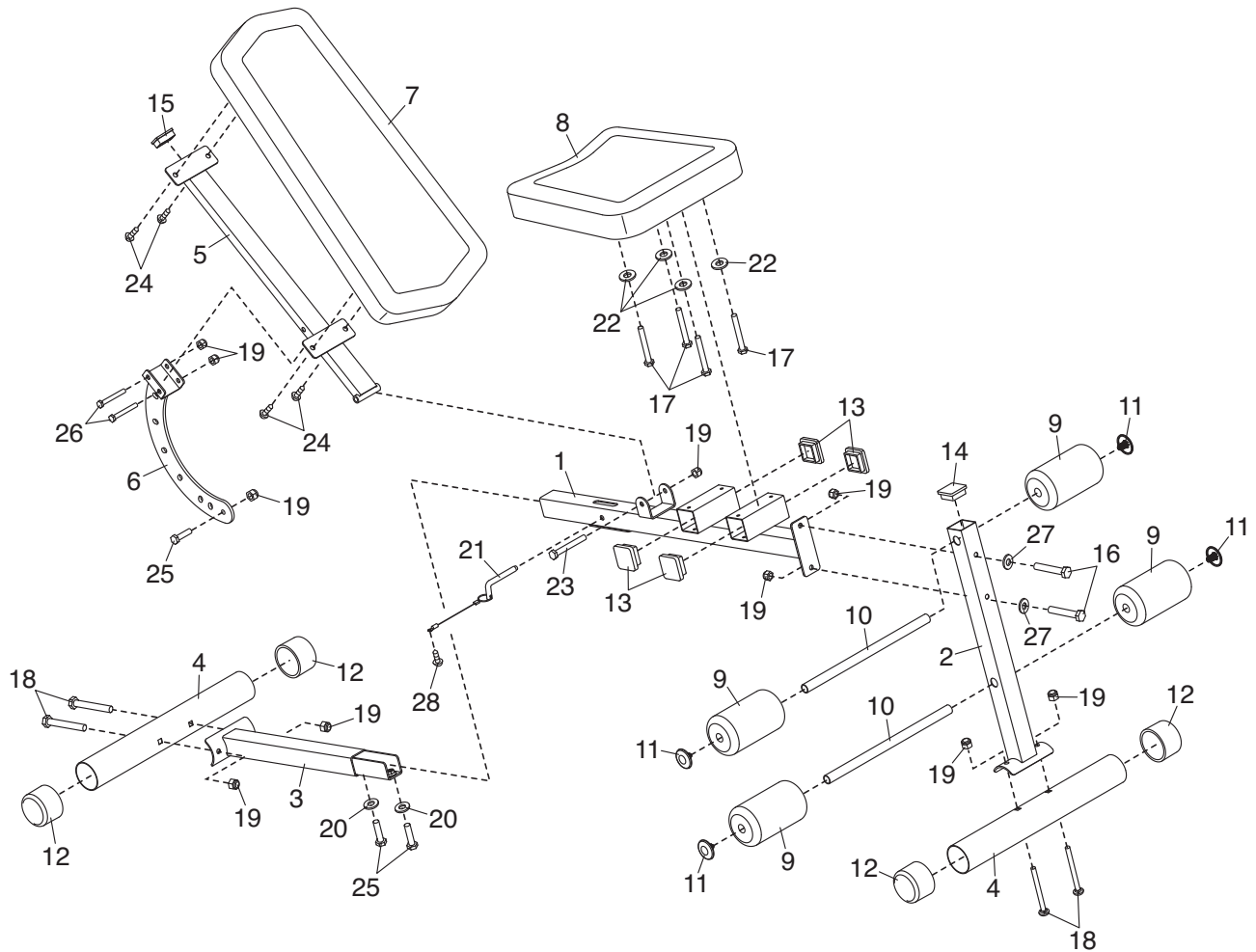
---

## PART LIST—Model No. WEEVBE5909.0

R0909A

Key No.	Qty.	Description	Key No.	Qty.	Description
1	1	Frame	17	4	M6 x 60mm Screw
2	1	Front Leg	18	4	M10 x 63mm Carriage Bolt
3	1	Rear Leg	19	10	M10 Locknut
4	2	Stabilizer	20	2	M10 Washer
5	1	Backrest Frame	21	1	Locking Pin
6	1	Pivot Bracket	22	4	M6 Washer
7	1	Backrest	23	1	M10 x 85mm Bolt
8	1	Seat	24	4	M6 x 16mm Screw
9	4	Foam Pad	25	3	M10 x 20mm Bolt
10	2	Pad Tube	26	2	M10 x 70mm Bolt
11	4	19mm Round Inner Cap	27	2	M10 Large Washer
12	4	50mm Round Outer Cap	28	1	M4 x 16mm Screw
13	4	50mm Square Inner Cap	*	—	User's Manual
14	1	45mm Square Inner Cap	*	—	Exercise Guide
15	1	25mm x 50mm Inner Cap	*	—	Grease Packet
16	2	M10 x 63mm Bolt			

Note: Specifications are subject to change without notice. For information about ordering replacement parts, see the back cover of this manual. \*These parts are not illustrated.



---

# ORDERING REPLACEMENT PARTS

To order replacement parts, please see the front cover of this manual. To help us assist you, be prepared to provide the following information when contacting us:

- the model number and serial number of the product (see the front cover of this manual)
- the name of the product (see the front cover of this manual)
- the key number and description of the replacement part(s) (see the PART LIST and the EXPLODED DRAWING near the end of this manual)