

## 8. ACCESSING YOUR CONTROL POINT USER INTERFACE

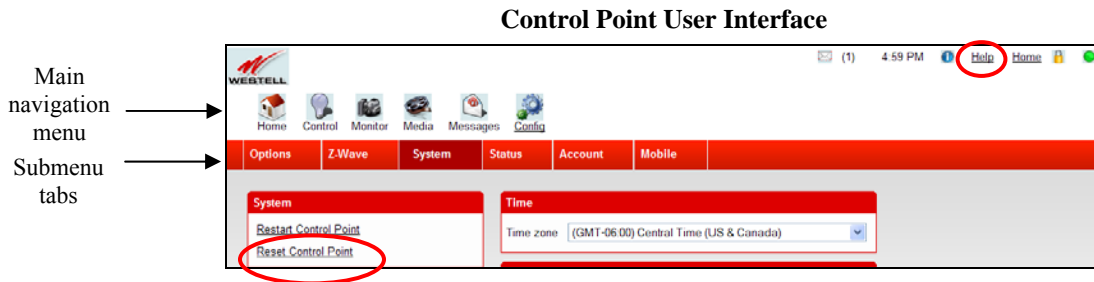
**IMPORTANT:** The following sections assume that your Internet network is up and functioning properly, that your 7502AG Control Point and 7521FF Camera devices are installed, and that you have QuickTime installed.

Now that you have activated your Control Point, you are ready to customize the configurable features of your service, such as Camera and Media settings, Sensors, Schedules, etc. Control Point provides a User Interface that allows you to access these features and customize them to your preference.

To access the Control Point User Interface, start your browser and type the following IP address in the browser's address bar:

**http://192.168.1.16**

Then, press **Enter** on your keyboard. The Control Point User Interface should appear in your browser.



### Navigating the Control Point User Interface

The Control Point User Interface displays a main navigation menu at the top of each page, allowing you to navigate to the various pages of your Control Point service. Clicking the sub-menu tabs—located below the main menu options—allows you to access specific services within the main menu.

**NOTE:** If you are at a page and need help, click the **Help** link in the upper-right corner of the screen to learn more about that page.

### Resetting the Control Point to Factory Defaults

If you decide to reset your Control Point to its factory default settings, simply press the **Reset** button on the back of the unit for more than 10 seconds, and then wait for the Control Point to reset. Alternatively, you can reset the Control Point to factory defaults by clicking the **System** tab within the **Config** menu, as explained later in this User Guide. Resetting the Control Point to factory defaults may be useful for recovering from situations where the device is performing abnormally.

**NOTE:** If you reset the Control Point to factory default settings, you will need to sign in to your Control Point again to access the User Interface. If needed, refer to section 7.2 for details on signing in to your Control Point.

The following sections provide details on configuring your Control Point services. From this point forward the 7502AG will be referred to as the “Control Point.” And the 7521FF Camera will be referred to as the “Camera.”

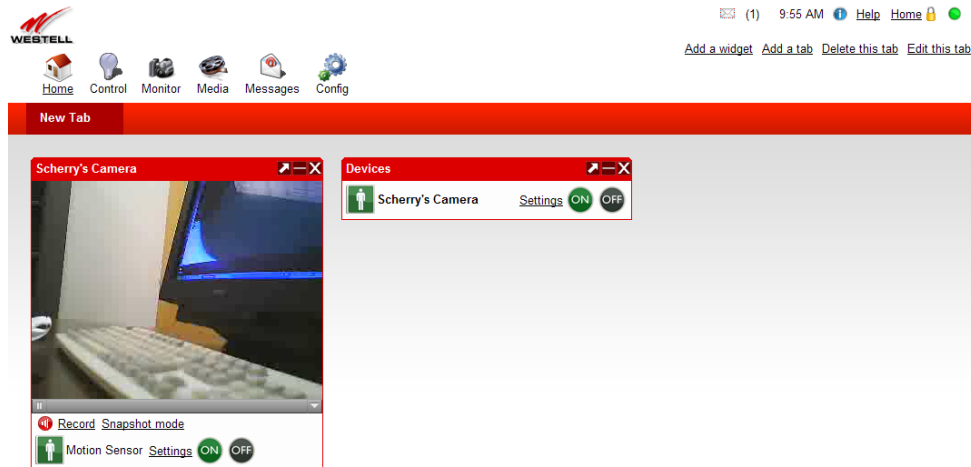
## 9. HOME

If you have accessed your Control Point services, as explained in section 8 of this User Guide, you can begin customizing your service. By default, the following Home page appears when you first access the Control Point User Interface. Devices will not be displayed in the Home page until you have configured them. For example, in the following home page, a Camera device has been configured.

A set of links appear in the upper-right area of the home page. By clicking these links, you can do the following:

- Add a widget—A widget acts like a mini-panel that can be moved, collapsed, and expanded.
- Add a tab—Allows you to add additional tabs to your home page. Each tab in the home page can contain as many widget as you like and allows you to customize its layout.
- Delete this tab—Allows you to delete tabs that you have created.
- Edit this tab—Allows you to rename a tab and edit the layout of the tab.

The following sections describe these links.

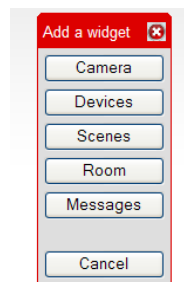


## 9.1 Creating Widgets and Tabs

For example, in the home page, if you click **Add a widget**, the following panel appears. Each widget provides the functionality of its content type:

- Camera—Displays live feeds from an IP camera connect to your Control Point.
- Devices—Enables you to quickly control devices you’ve already set up.
- Scenes—Allows you to run existing scenes.
- Room—Allows you to add rooms.
- Messages—Allows you to view messages sent by Control Point.

To add a widget, click the button of the widget you want to add. If you do not want to add a widget, click **Cancel** to close the panel.



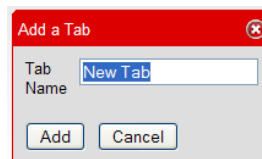
Each widget has at least three buttons in its upper-right corner:

- Clicking the **X** button removes the widget from the page.
- Clicking the – button collapses the widget to a single line (it is then replaced by a + button that restores the widget to its original size).
- Clicking the arrow pointing upwards and to the right maximizes the widget to fill the tab (it is then replaced by an arrow pointing downwards and to the left that restores the widget to its original size).



You can add Tabs to your home page to help organize different types of services. For example, you could place all your Camera widgets in a tab labeled “Cameras” and all your Device widgets in a tab labeled “Devices.” By default your home page displayed the tab labeled “New Tab.”

To add a tab, to your home page, click the **Add a tab** link. The following panel appears. Enter the desired name in the field provided and then click **Add** to continue. The new tab will appear in the submenu of your home page.



If you want to make changes to a tab that you have already created, in the submenu, click the tab you want to change, and then click **Edit this Tab**. If you want to delete a tab, click **Delete this Tab**.

## 9.2 Using the Administrator Links

Several small icons appear in the upper-right corner of the Control Point User Interface. Use these icons to access various administrative features in your Control Point:

- Click the envelope icon to jump to the Messages page and view your messages. A number is displayed next to the envelope, indicating the number of messages received.
- View the number in parenthesis to see how many messages have been received/sent.
- View the time reference to know the time of day.
- Hover your mouse over the information icon (the lowercase i) to display your Control Point's software version.
- Click the **Help** link to learn more about the page you are at.
- Click the **Away** link to change the Control Point's Global Security state.

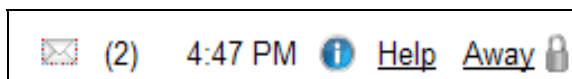
Note: The link displayed here depends on the state you have configured in your Control Point. As discussed later in this User Guide, Control Point has three Global Security states (Home, Away, Stay) that provide you with flexibility in controlling and monitoring your devices. This feature allows your IP camera and other devices to behave differently depending on whether you are at home, away from home, or staying inside—e.g., at home but asleep.

- Click the lock icon to toggle between Administrator Mode and User Mode. If you turn on Administrator mode, you will need to enter a password whenever you want to take advantage of the User Interface's advanced features.

To turn on Administrator mode, click the lock icon, enter your password in the pop-up screen, and then click OK .



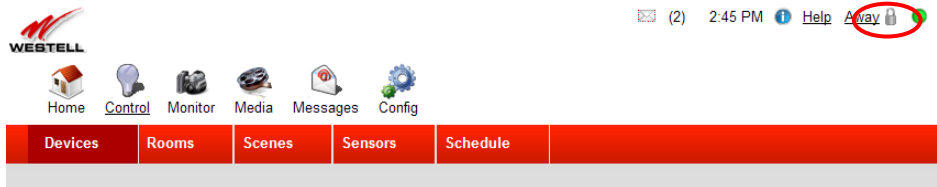
When Administrator Mode is turned on, the lock icon will appear dimmed.



## 10. CONTROL

If you click the **Control** icon in the main navigation menu, the following page appears. The Control feature allows you to setup the services that you want Control Point to monitor or use. This section explains the different services and operations within the Control menu. To access a page within the Control menu, click the desired submenu tab. The Devices tab is selected by default.

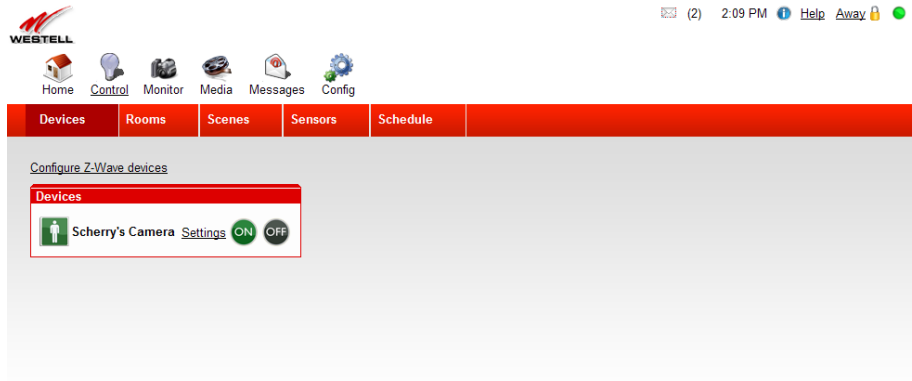
**NOTE:** Before proceeding in the Control menu, please make sure that Administrator mode is turn on. If the lock icon appears dimmed, Administrator Mode is on.



### 10.1 Devices

The Devices page displays a list of the devices you have already configured, as well as the motion/audio sensor components of some cameras. Use this page to view and control your devices.

- To turn devices on and off, click the corresponding buttons.
- To change a device's name, click on the name and then type the desired name. (You must be in Administrator Mode to unlock restricted access.)
- To add devices to your system, click the Z-Wave link.



## Configuring a Z-Wave Device

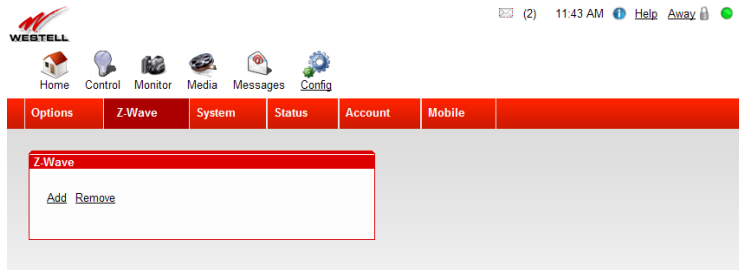
If you click the [Configure Z-Wave devices](#) link, the following page appears.

**NOTE:** You can also access this page by clicking the Config icon in the main navigation menu.

Z-Wave<sup>®</sup> is a wireless communications standard designed for home automation, specifically to remote control applications in residential and light commercial environments. The technology has been standardized by the Z-Wave Alliance, an international consortium of manufacturers that oversees interoperability between Z-Wave products and enabled devices. Using a Z-Wave adapter allows you to control home electronic devices such as a lighting, appliances, entertainment systems, or any device in your home that runs on electricity. Once you have installed your Z-Wave adapter, attached a device, and setup your Control Point service, you can access your service from your home, office, mobile phone, or wherever you have Internet access, allowing you to control the device locally or remotely through your Control Point User Interface.

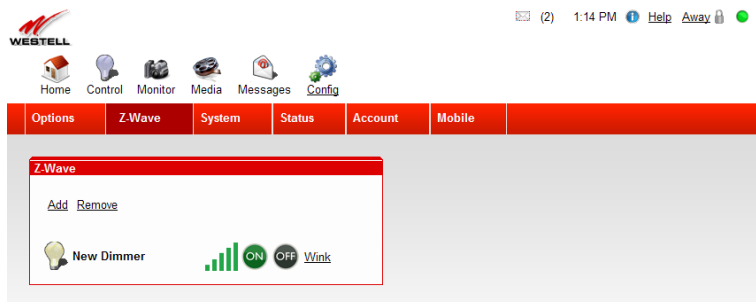
**NOTE:** Z-Wave adapters are not included with your kit; however, they can be purchased from computer hardware retailers.

To add a Z-Wave device, click the [Add](#) link. Plug your Z-Wave device into an AC wall socket or power strip. Then make sure your Z-Wave device is turned on. You might need to wait a brief moment for the Z-Wave device to register with the Control Point.



After the Z-Wave device has registered with the Control Point, the following screen appears. The Z-Wave panel now displays an icon indicating that the device has been detected. For example, if you have a lamp connected to your Control Point, you can do the following:

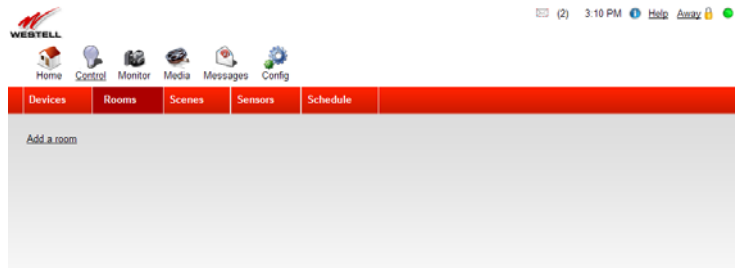
- Click any of the green vertical bars to control how bright or dim you want the lamp emit light.
- Click the ON/OFF buttons to set the device to the corresponding state.
- Click the [Wink](#) link, to control whether you want the lamp to blink on and off.
- Click the text (“New Dimmer” by default) and type and save a new name for your device.



## 10.2 Rooms

If you click the Rooms tab within the Control menu, the following page appears. By organizing your cameras and devices into **Rooms**, you can make it easier to find the exact camera you want to control.

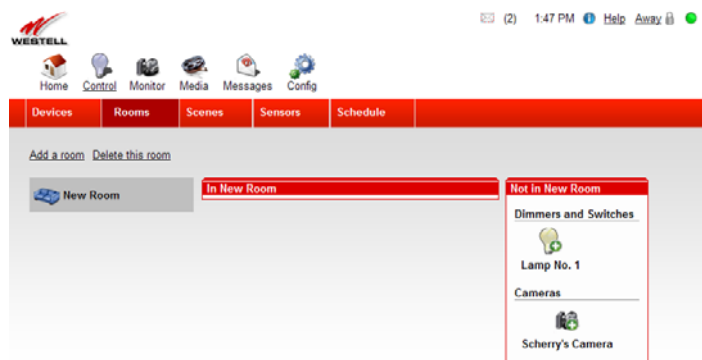
To create a Room, click the [Add a Room](#) link.



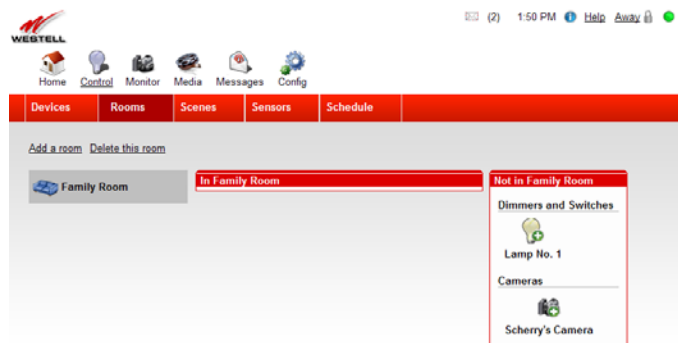
The following page appears, and a “In New Room” panel has been added to the page.

**NOTE:** The “In New Room” panel will be empty the first time you create a new Room.

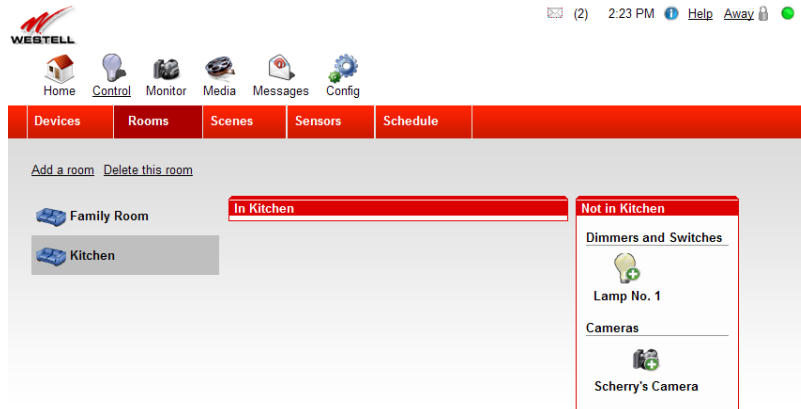
Next, click on the text ("New Room" by default) next to the Couch icon, and type a new name for the room.



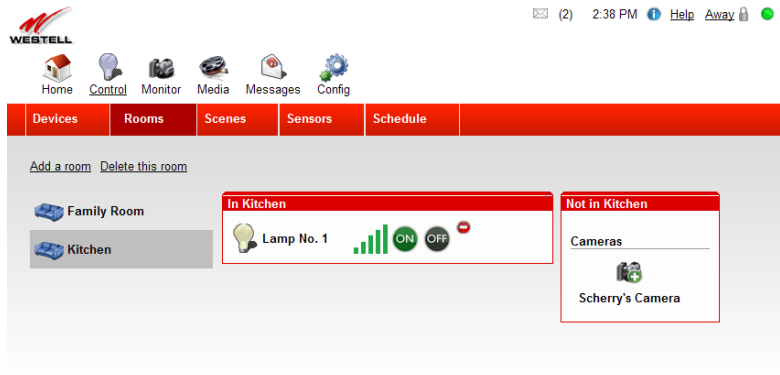
For example, this room has been given the name “Family Room,” and the panel names have been updated. You can add additional rooms by clicking the [Add a room](#) link.



Included in the Rooms panel is a list of all the Z-Wave devices and Cameras that are registered with your Control Point, but that are not currently in the selected Room.



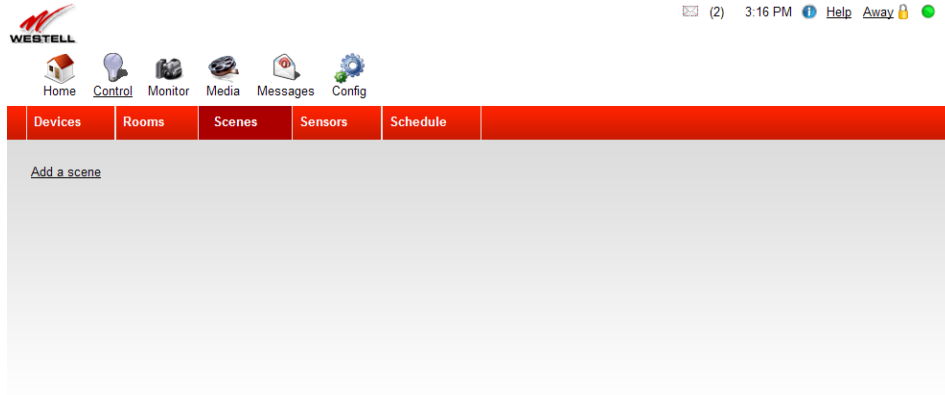
To move a device to a selected, room, click the plug symbol on the device you want to move to the selected room. Clicking the plus symbol + moves any Camera or Z-Wave device moves from list into the selected room, as shown in the following page. Then if you want to remove a device, simply click the minus symbol – to move the device back to the list.





## 10.3 Scenes

If you click the Scenes tab within the Control menu, the following page appears.



**NOTE:** You must be in Administrator Mode if you want to Add or Delete a Scene, Edit a Scene's name, or Add more devices to a Scene.

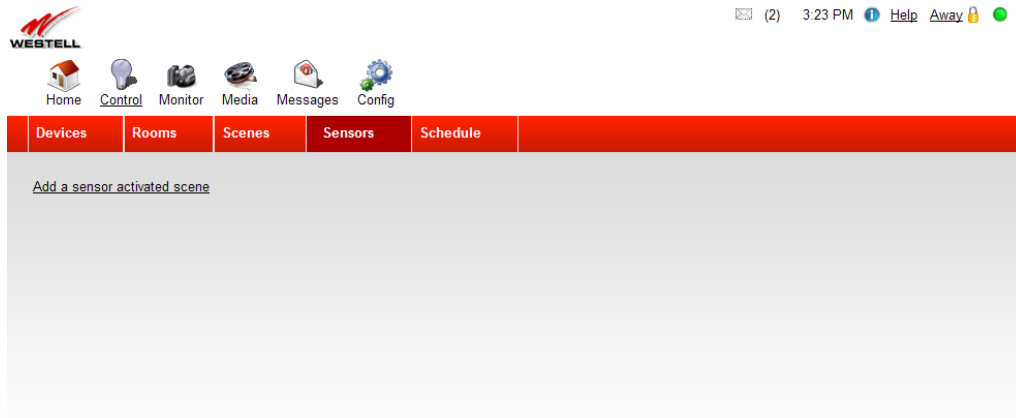
To create a Scene, do the following:

1. Turn on Administrator Mode by clicking the lock icon in the upper-right corner of the page. If the icon appears dimmed, Administrator Mode is already on.
2. Click the Control icon, then go to the Scenes tab.
3. Click the Add a scene icon to create a new Scene.
4. Enter your password in the pop-up screen to gain access to restricted features. Click OK to continue.
5. Click on the Scene's name ("New Scene" by default) and type in the new name of the scene.
6. Click on the clipboard icon next to the Scene's name to focus on it. You will see some lists just like the ones you saw when creating and filling a Room.

You can add cameras and behaviors (e.g., Sleep and Send message) to the Scene just like you added cameras to your Room. When you add a camera to a Scene, it will appear in the listing under the Scene name. Clicking on any camera in the listing will let you focus on it. Focusing on a camera while editing a Scene allows you to set its Scene state. When a Scene is Run, all cameras in that Scene switch to their Scene states. Remember to click the **Save** button after editing a Scene to save your changes. You can Run a Scene at any time.

## 10.4 Sensors

If you click the Sensors tab within the Control menu, the following page appears. This page allows you to configure motion, occupancy, and audio sensors, and allows you to set up what events should occur when the sensors are triggered.



To set up a trigger, do the following:

1. Click the [Add a sensor activated scene](#) link to create a special type of Scene that responds to detected motion/occupancy/sound. Click on its name ("New sensor scene" by default) and type in the new name of the Sensor scene.
2. Click on the red hand icon next to the Sensor scene name to focus on it. You will see a dialog with several fields:
  - Clicking on Add a sensor will bring up a list of all of the sensors you have set up so far. Click on as many of them as you like to add them to this Sensor scene. The Sensor scene will be Run whenever any sensor it contains detects motion/occupancy/sound
  - Once the sensor is added, click on "Sensor Activate" to have the scene run when there is activity on the sensor or click Sensor reset to have the scene run when the sensor no longer senses activity
  - Clicking on Add a scene will bring up a list of all of the scenes you have set up so far. Click on as many of them as you like to add them to this Sensor scene. When the Sensor scene is Run, all of the scenes it contains will also be Run
  - Clicking on Devices to turn on will bring up a list of all of the devices you have set up so far. Click on as many of them as you like to add them to this Sensor scene. When the Sensor scene is Run, all of the devices it contains will turn on
  - Clicking on Devices to turn off will bring up a list of all of the devices you have set up so far. Click on as many of them as you like to add them to this Sensor scene. When the Sensor scene is Run, all of the devices it contains will turn off
  - Selecting Enable for the Log Message field will cause a message to be added to the Control Point activity log whenever the Sensor scene is Run. If you select Disable, no message will be added to the activity log when the Sensor scene is Run



- Clicking on Set the camera will bring up a list of all of the cameras you have set up so far. Click on as many of them as you like to add them to this Sensor scene. When the Sensor scene is Run, all of the cameras it contains will begin recording
- The number in the Scene running time in seconds field of the dialog is the length of time in seconds that the scene will keep running when the Sensor scene is Run. This is the length of time that any cameras in the scene will record. Any devices turned off by the scene will be turned back on after this time, and any devices turned on by it will be turned back off
- You have several options about when you would like this Sensor scene to be enabled. Selecting Always will make it always enabled and selecting Never will make it never run. Selecting In selected state(s) will make three checkboxes appear, labeled with the three Global Security States. You can check as many of them as you like (note that checking all three is the same as selecting Always)

For example, you have created a trigger that causes the camera in your living room to record for 15 seconds when motion is detected. This means that every time your living room sensor detects motion, it will cause your camera to record for 15 seconds. But this is not useful to you during the day when you or your family is at home, so you can set the Sensor scene to only be enabled in the Stay and Away states. This will make it so that when your security state is set to Home, motion in your living room will not trigger the camera.

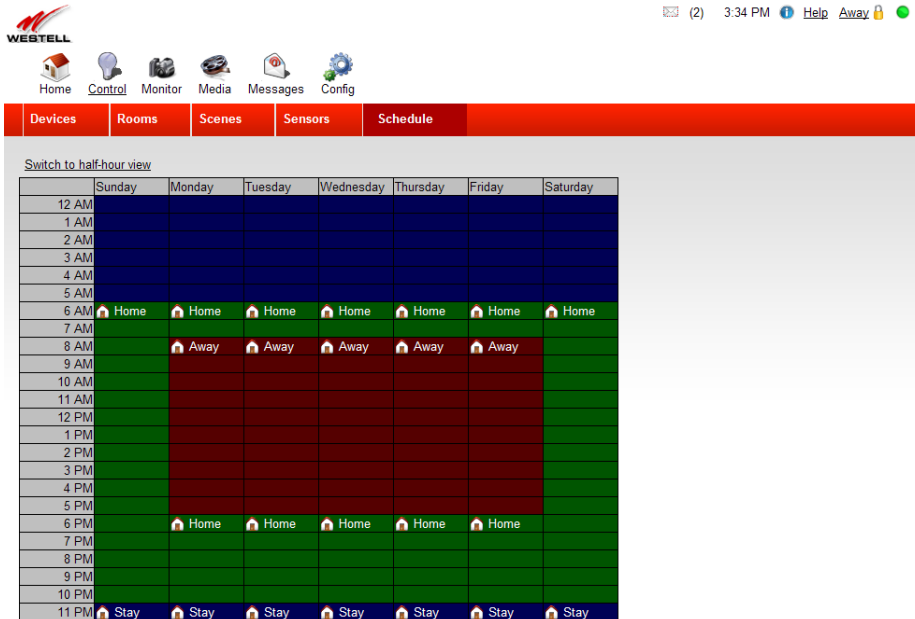
**NOTE:** Some IP cameras can also act as motion/occupancy sensors. Some IP cameras (like your 7521FF Camera) come equipped with built-in audio sensors in addition to motion/occupancy sensors. You can use any camera built-in motion/occupancy or audio sensor to set up triggers exactly as you would an ordinary motion/occupancy sensor. Built-in motion/occupancy sensors appear with the same "person" icon as ordinary motion/occupancy sensors. Audio sensors appear with a microphone icon. If you would like built-in sensors to appear in your Devices tab or widgets, you will need to turn on Administrator Mode, and click on Config, then check the show camera sensors check box.

## 10.5 Schedule

If you click the Schedule tab within the Control menu, the following page appears. By creating a **Schedule**, you can set the Scenes you have already created to be automatically Run at a time of your choice. The Schedule is essentially a Scene organizer. A reasonable default Schedule comes pre-configured on your Control Point. Using the link in the upper-left corner of the page, you can choose which view you want to display.

- [Switch to half-hour view](#)—Click this link to display the schedule in half-hour increments.
- [Switch to hour view](#)—Click this link to display the schedule in hour increments.

**NOTE:** To make changes to the Schedule, you must be in Administrator mode. If you're in Administrator Mode, you can click on any field in the spreadsheet for which something has been scheduled to change or delete it from the Schedule.



	Sunday	Monday	Tuesday	Wednesday	Thursday	Friday	Saturday
12 AM							
1 AM							
2 AM							
3 AM							
4 AM							
5 AM							
6 AM	Home	Home	Home	Home	Home	Home	Home
7 AM	Home						
8 AM		Away	Away	Away	Away	Away	
9 AM							
10 AM							
11 AM							
12 PM							
1 PM							
2 PM							
3 PM							
4 PM							
5 PM							
6 PM		Home	Home	Home	Home	Home	
7 PM							
8 PM							
9 PM							
10 PM							
11 PM	Stay	Stay	Stay	Stay	Stay	Stay	Stay

To set up or adjust your schedule, do the following:

1. Click on any field of the spreadsheet to bring up a dialog which contains three lists:
  - The list labeled Scenes will contain all of the Scenes you have created
  - The list labeled Home States will contain the three Global Security States - Home, Away, Stay
  - The list labeled Schedule Recording will contain all of the cameras you have added to your Control Point
2. Click on one item in any of the lists to go on to the next dialog. It will prompt you to enter a time (the spreadsheet is broken into 30-minute intervals, but you can enter any time you like into the field) and select the days of the week for which you'd like to schedule the behavior. If you selected a camera in Step 3, you will also be prompted to enter a recording duration.



## **Global Security State (GSS)**

Global Security State is a feature that allows your IP camera or devices to behave differently depending on if you are at home, away or staying inside. When you create a sensor scene on your camera in the sensors tab of the control page, you have the option to enable the camera to record always, never or in this GSS mode. It is useful when you want to set the camera to record motion when away from home, but not when you are at home and active around the house.

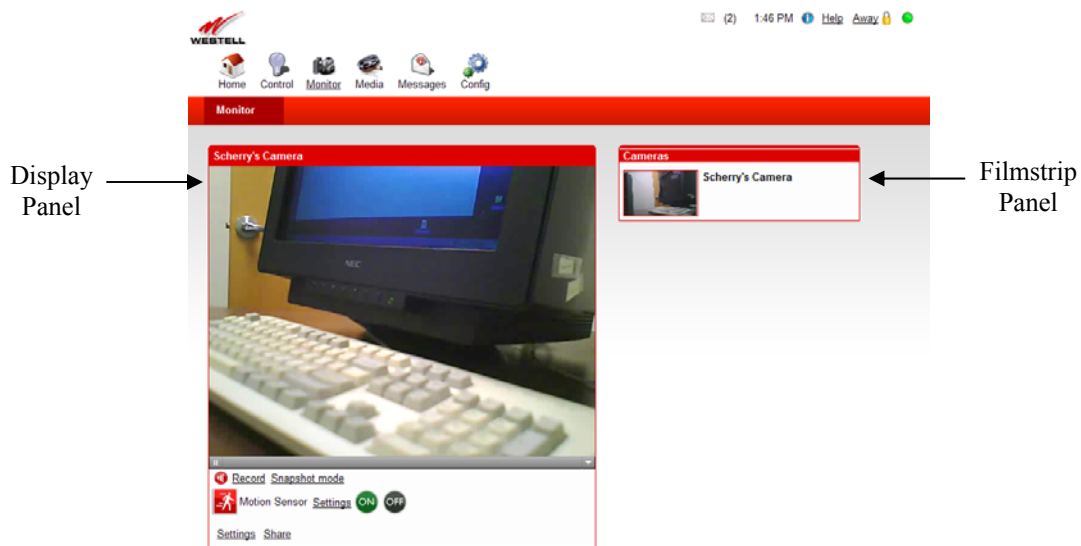
GSS is set by default and based on the typical times people are usually at home, away or asleep. To change the GSS, simply click on the time and day in your schedule and select the correct mode (home, away, stay) you would prefer based on your preferences. This GSS mode will continue in your schedule until you enter a different mode to begin at another time of the day/night.

- Home—Home is the GSS mode where you or someone else is in the home and active. The sensor in the camera will not trigger and send notifications to your email or mobile phone.
- Away—Away is when nobody is at home and motion sensed by the camera will send you notifications and record activity if configured to do so by you.
- Stay—Stay is when people are generally at home but there is no activity in the house (i.e., when sleeping) and the camera or other devices will be triggered if activity is sensed.

## 11. MONITOR

If you click the **Monitor** icon in the main navigation menu, the following page appears. This page displays two panels: Display and Filmstrip.

- Display—The Display panel, located on the left of the page, displays whatever is in the Camera's view.
- Filmstrip—The Filmstrip panel, located on the right, displays a thumbnail of the Camera's image. If more than one Camera is connected to the Control Point, the Filmstrip panel will display a list of Camera thumbnails.



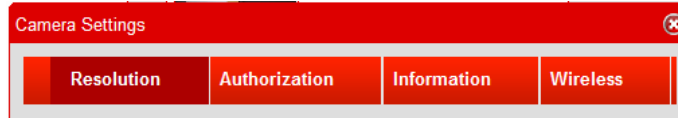
### 11.1 Display Panel

Several links are provided at the bottom of the Display panel that allow you to edit different Camera settings. Clicking these links allows you to do the following:

- Record—Allows you to create record session of the Camera's streamed images.
- Snapshot mode—Allows you to change from Streaming mode to Snapshot mode.
- Motion Sensor Settings—Allows you to set the motions sensor settings in your Camera.
- ON/OFF Button—Allows you to toggle the Motion Sensor On or Off.
- Settings—Allows access to the detailed settings of your Camera.

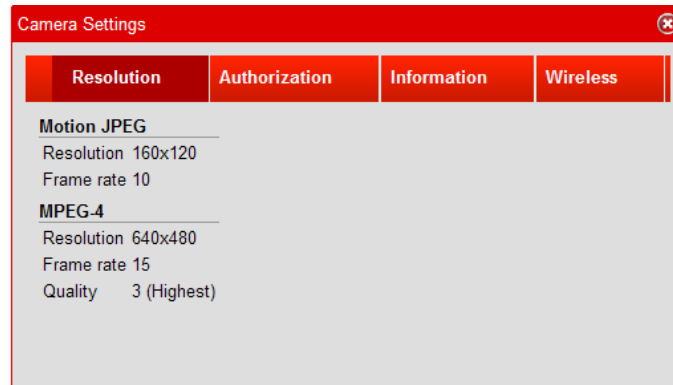
## Camera Settings

If you clicked the [Settings](#) link in the Display panel, the following tabs appear. Click the tab of the page you want to access. The following sections explain various Camera settings.



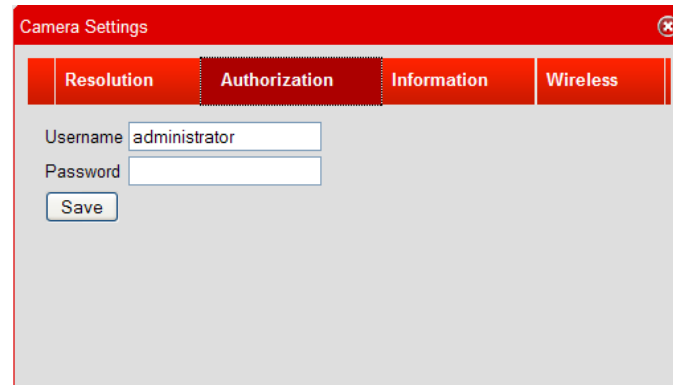
### 11.1.1 Resolution

For example, if you click the Resolution tab, the following panel appears. The Resolution panel provides characteristics of the Camera's image settings.



### 11.1.2 Authorization

If you click the Authorization tab, the following panel appears. The panel allows you to set up the Username and Password for your Camera. Then, whenever you want to change the Advanced features in your Camera, authorization will be required (you will need to enter the password) to make changes. Type your Username and Password, and then click **Save** to save the settings to your Control Point.



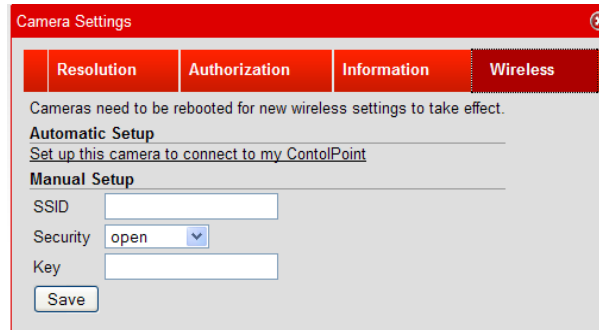
### 11.1.3 Information

If you click the Information tab, the following panel appears. The Information panel provides additional details on Camera.



### 11.1.4 Wireless

If you click the Wireless tab, the following panel appears. Use this screen to configure the Camera settings for wireless connection to the Control Point. If you enter any settings into this page, click **Save** to save the settings.



## Privacy Mode

Your Camera has a privacy mode button located on the front of the Camera above the lens. Pressing this button allows you to turn on or turn off your Camera's video modes: Privacy and Streaming.

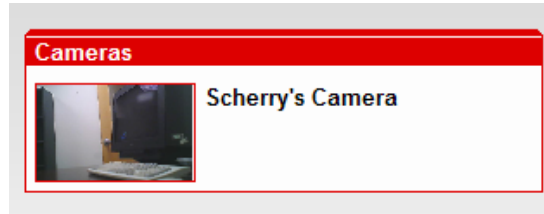
**Privacy Mode**—When the Camera is in Privacy Mode, the button's light turns green to signify that privacy mode is on, and that video streaming is off.

**Streaming Mode**—When the Camera is in Streaming Mode, the button's light turns off to signify that privacy mode is off, and that video streaming is on.

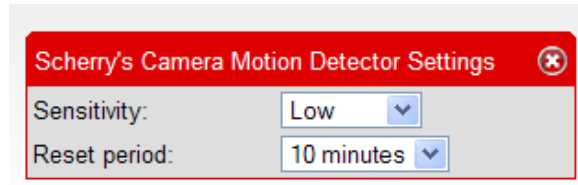


## 11.2 Filmstrip Panel

If you click on any thumbnail in the Filmstrip panel, the Camera's video feed will be shown in the Display panel,



If you click the [Settings](#) link in the Filmstrip panel, the following panel appears. Use this panel to set the sensitivity and reset period values for your Camera.



## 12. TECHNICAL SUPPORT INFORMATION

Contact your Internet service provider for technical support.

## 13. PRODUCT SPECIFICATIONS

### Computer Minimum Requirements

- Pentium® or higher class machines
- Microsoft® Windows® Vista™ or Macintosh® OS X or higher
- 64 MB RAM (128 MB recommended)
- 10 MB of free hard drive space
- 10/100 Base-T Network Interface Card (NIC)
- Explorer® 7.0 or later, Firefox® 3.0, or later, Safari® 2.0 or later

### 7502AG Specifications

#### LEDs

- POWER
- USB1
- USB2
- ETHERNET
- WIFI
- INTERNET
- Z-Wave
- SERVICE

#### Connectors

- WAN: 10/100 BaseT RJ-45 modular jack
- LAN: 10/100 BaseT RJ-45 modular jack
- USB1
- USB2
- Power: Barrel connector

#### Power

- Power Supply: External 120 VAC (10%) to 12 VDC wall-mount power supply
- Power Consumption: Less than 8 watts typical, from 120 VAC

### Dimensions

- Height: 1.3 in. (3.30 cm)
- Width: 7.0 in (17.78 cm)
- Depth: 4.9 in. (12.44 cm)

### Weight

- Approx. 1 lb (0.45 kg)

### Environmental

- Ambient Operating Temperature: +32 to +104 °F (0 to +40 °C)
- Relative Humidity: 5 to 95%, non-condensing

### EMC/Safety/Regulatory Certifications

- FCC Part 15, Class B
- ANSI/UL Standard 60950-1
- CAN/CSA Standard C22.2 No. 60950-01 First Edition dated
- UL, CSA, ACTA 968-A-3
- Industry Canada CS03

### 7521FF Specifications

#### LEDs

- POWER
- NETWORK

#### Connectors

- LAN: 10/100 BaseT RJ-45 modular jack
- Power: Barrel connector

#### Power

- Power Supply: External 120 VAC (10%) to 5 VDC wall-mount power supply

## 14. SOFTWARE LICENSE AGREEMENT

**READ THE TERMS AND CONDITIONS OF THIS LICENSE AGREEMENT CAREFULLY. THIS SOFTWARE IS COPYRIGHTED AND LICENSED (NOT SOLD). BY INSTALLING AND OPERATING THIS PRODUCT, YOU ARE ACCEPTING AND AGREEING TO THE TERMS OF THIS LICENSE AGREEMENT. IF YOU ARE NOT WILLING TO BE BOUND BY THE TERMS OF THIS LICENSE AGREEMENT, YOU SHOULD PROMPTLY RETURN THE SOFTWARE AND HARDWARE TO WESTELL TECHNOLOGIES, INC. THIS LICENSE AGREEMENT REPRESENTS THE ENTIRE AGREEMENT CONCERNING THE SOFTWARE BETWEEN YOU AND WESTELL TECHNOLOGIES, INC. (REFERRED TO AS "LICENSOR"), AND IT SUPERSEDES ANY PRIOR PROPOSAL, REPRESENTATION, OR UNDERSTANDING BETWEEN THE PARTIES.**

**1. License Grant.** Licensor hereby grants to you, and you accept, a nonexclusive license to use the Compact Disk (CD) and the computer programs contained therein in machine-readable, object code form only (collectively referred to as the "SOFTWARE"), and the accompanying User Documentation, only as authorized in this License Agreement. The SOFTWARE may be used only in connection with the number of systems for which you have paid license fees as dictated in your support agreement. You agree that you will not assign, sublicense, transfer, pledge, lease, rent, or share your rights under this License Agreement. You agree that you may not nor allow others to reverse assemble, reverse compile, or otherwise translate the SOFTWARE.

You may retain the SOFTWARE CD for backup purposes only. In addition, you may make one copy of the SOFTWARE in any storage medium for backup purposes only. You may make one copy of the User's Manual for backup purposes only. Any such copies of the SOFTWARE or the User's Manual shall include Licensor's copyright and other proprietary notices. Except as authorized under this paragraph, no copies of the SOFTWARE or any portions thereof may be made by you or any person under your authority or control.

**2. Licensor's Rights.** You acknowledge and agree that the SOFTWARE and the User's Manual are proprietary products of Licensor protected under U.S. copyright law. You further acknowledge and agree that all right, title, and interest in and to the SOFTWARE, including associated intellectual property rights, are and shall remain with Licensor. This License Agreement does not convey to you an interest in or to the SOFTWARE, but only a limited right of use revocable in accordance with the terms of this License Agreement.

**3. License Fees.** The fees paid by you under the support agreement are paid in consideration of the licenses granted under this License Agreement.

**4. Term.** This License Agreement is effective upon your opening of this package and shall continue until terminated. You may terminate this License Agreement at any time by returning the SOFTWARE and all copies thereof and extracts there from to Licensor. Licensor may terminate this License Agreement upon the breach by you of any term hereof. Upon such termination by Licensor, you agree to return to Licensor the SOFTWARE and all copies and portions thereof.

**5. Limitation of Liability.** Licensor's cumulative liability to you or any other party for any loss or damages resulting from any claims, demands, or actions arising out of or relating to this Agreement shall not exceed the license fee paid to Licensor for the use of the SOFTWARE. In no event shall Licensor be liable for any indirect, incidental, consequential, special, or exemplary damages or lost profits, even if Licensor has been advised of the possibility of such damages. **SOME STATES DO NOT ALLOW THE LIMITATION OR EXCLUSION OF LIABILITY FOR INCIDENTAL OR CONSEQUENTIAL DAMAGES, SO THE ABOVE LIMITATION OR EXCLUSION MAY NOT APPLY TO YOU.**



*User Guide*

*Control Point Home Monitoring Service*

**6. Governing Law.** This License Agreement shall be construed and governed in accordance with the laws of the State of Illinois. You submit to the jurisdiction of the state and federal courts of the state of Illinois and agree that venue is proper in those courts with regard to any litigation arising under this Agreement.

**7. Costs of Litigation.** If any action is brought by either party to this License Agreement against the other party regarding the subject matter hereof, the prevailing party shall be entitled to recover, in addition to any other relief granted, reasonable attorney fees and expenses of litigation.

**8. Severability.** Should any term of this License Agreement be declared void or unenforceable by any court of competent jurisdiction, such declaration shall have no effect on the remaining terms hereof.

**9. No Waiver.** The failure of either party to enforce any rights granted hereunder or to take action against the other party in the event of any breach hereunder shall not be deemed a waiver by that party as to subsequent enforcement of rights or subsequent actions in the event of future breaches.



## **15. PUBLICATION INFORMATION**

Westell Control Point Home Monitoring Service (Models 7502AG, 7521FF)  
Document Part Number 030-300589 Rev. A

© 2009 Westell, Inc.  
All rights reserved.

ENERGY STAR is a registered mark owned by the U.S. government.  
Z-Wave is a registered trade mark of Zensys, Inc. and its subsidiaries in the United States and other countries.  
QuickTime and the QuickTime logo are trademarks or registered trademarks of Apple Computer, Inc., used under license therefrom.  
All other trademarks and registered trademarks are the property of their respective owners.