

CSI-CPBH-MG-C4, CSI-CPBH-MG-P4,
CSI-CPBH-MG-C2/P2, CSI-CPBH-MG-AW4,
CSI-CPBH-MG-C2/AW2, CSI-CPBH-MG-P2/AW2,
CSI-CPBH-MO-C4, CSI-CPBH-MO-P4,
CSI-CPBH-MO-C2/P2, CSI-CPBH-MO-AW4,
CSI-CPBH-MO-C2/AW2, CSI-CPBH-MO-P2/AW2,
CSI-CPBH-MX-C4, CSI-CPBH-MX-P4,
CSI-CPBH-MX-C2/P2, CSI-CPBH-MX-AW4,
CSI-CPBH-MX-C2/AW2, CSI-CPBH-MX-P2/AW2,

Table of Contents

Product Registration Information	4
Document Purpose / Intended Users	4
Radio and Television Interference	4
Application	4
Safety Guidelines	4
Important Safety Information	4
Acronyms and Definitions	5
Product Introduction	5
Functional Overview	6
Electrical Characteristics	6
Mechanical Specifications	6
AC Power Specifications	6
Environmental Requirements	6
Mechanical Drawing	7
System Set-Up Considerations	7
Mounting the Co-Pilot Beacon	7
Typical Co-Pilot/BTS Interconnection with Internal CDMA Timing (MO Series)	8
Typical Co-Pilot/Repeater Interconnection with Internal GPS Timing (MG Series)	9
Typical Co-Pilot/Repeater Interconnection with External TM-4 (MX Series)	10
Optional Accessories	11
Important Installation Notes	11
Powering Up the Unit	11
Local Communication Interface Ports	11
Web based GUI Session	12
Element Management System	13
System Info Tab	13
System Status and Configuration Tab	14
Administration Tasks Panel	15
Supplemental Configuration Tab	16
SNMP Configuration Tab	16
Alarms Tab	17
Setup Element Configuration Tab	17
Special Icons	18
Install Software Icon	18
Copy Logs Icon	18
Reboot Icon	18
Collapse/Expand Icon	19
Alarm Status Icon	19
Administration Tasks Collapse/Expand Icon	20
Elements Collapse/Expand Icon	21
EIA232 Pin Specifications	22
USB Interface	22
Ethernet	22
Monitoring & Alarms	22
Text Menu Interface	23
Local Access	23
User Interface	25
Login	25
Main Menu	25
Telnet Session (Remote Access)	26
Set Parameters Menu	26
Co-Pilot Beacon Configuration	30
Transmitter Configuration	30

System Configuration	31
Networking Configuration	32
System Commands	33
Key Features	34
Multiple Beacon Configuration.....	34
Detected RF Power Shutdown	34
Timing Reference Source	34
Control Parameter Details	34
Master Shutdown.....	34
Timing Reference Selection	34
Channel Frequency Numbers.....	35
Signal Transmit Enables.....	35
PN Offset.....	36
Tau (Delay Correction).....	36
Co-pilot beacon Per Channel Transmit Power	36
Composite Transmit Power	36
Manual Shutdown	36
Auto Shutdown Enable	36
Auto Shutdown Threshold	36
Detected Power	36
Additional Tips	37
One Year Limited Warranty	39
Industry Certifications/Registration Numbers	39
Index.....	40

Product Registration Information

The serial number may be found on the label on the bottom panel near the power connectors. Note this number below. Retain this manual, along with proof of purchase, to serve as a permanent record of your purchase.

MODEL NUMBER

SERIAL NUMBER

PURCHASE DATE

POINT OF SALE COMPANY

DISCLAIMER: All information and statements contained herein are accurate to the best of the knowledge of Cellular Specialties, Inc. (CSI), but Cellular Specialties makes no warranty with respect thereto, including without limitation any results that may be obtained from the products described herein or the infringement by such products of any proprietary rights of any persons. Use or application of such information or statements is at the users sole risk, without any liability on the part of Cellular Specialties, Inc. Nothing herein shall be construed as licence or recommendation for use, which infringes upon any proprietary rights of any person. Product material and specifications are subject to change without notice. Cellular Specialties' standard terms of sale and the specific terms of any particular sale apply.

Document Purpose / Intended Users

The purpose of this document is to provide a step-by-step procedure to help the experienced technician/engineer install and commission an in-building wireless enhancement pilot beacon system. Following the procedures outlined will minimize risks associated with modifying a live system and prevent service interruptions. This document assumes the technician/engineer understands the basic principles and functionality involved with the system. It is geared to the practical concerns of the installer.

Radio and Television Interference

NOTE: This equipment has been tested and found to comply with the limits for a Class A digital device, pursuant to Part 15 of the FCC rules. These limits are designed to provide reasonable protection against harmful interference when the equipment is operated in a commercial environment. This equipment generates, uses and can radiate radio frequency energy and, if not installed and used in accordance with the instruction manual, may cause harmful interference to radio communications. Operation of this equipment in a residential area is likely to cause harmful interference in which case the user will be required to correct the interference at his own expense. Changes and Modifications not expressly approved by Cellular Specialties, Inc. can void your authority to operate this equipment under Federal Communications Commission's rules.

Industry Canada Notice for 850 and 1900MHz Band Models

This device complies with Industry Canada licence-exempt RSS standard(s). Operation is subject to the following two conditions: (1) this device may not cause interference, and (2) this device must accept any interference, including interference that may cause undesired operation of the device.

Avis de conformité des modèles 850 et 1900 MHz à la réglementation d'Industrie Canada

Cet appareil est conforme aux normes CNR d'Industrie Canada applicables aux appareils radio exempts de licence. Son exploitation est soumise aux deux conditions suivantes: (1) cet appareil ne doit pas causer d'interférence radioélectrique, et (2) cet appareil doit accepter toute interférence radioélectrique, incluant les interférences susceptibles d'affecter son fonctionnement de façon indésirable.

Safety Guidelines

The general safety information in this guideline applies to both operating and service personnel. Specific warnings and cautions will be found in other parts of this manual where they apply, but may not appear in this summary. Failure to comply with these precautions or specific warnings elsewhere in the manual violates safety standards of design, manufacture, and intended use of equipment. Cellular Specialties, Inc. assumes no liability for the customer's failure to comply with these requirements:

Grounding

This pilot beacon system is designed to operate from 100-240 VAC and should always be operated with the ground wire properly connected. Do not remove or otherwise alter the grounding lug on the power cord.

Explosive Atmospheres

To avoid explosion or fire, do not operate this product in the presence of flammable gases or fumes.

Lightning Danger

Do not install or make adjustments to this unit during an electrical storm. Use of a suitable lightning arrester, such as CSI's model number CSI-CAP, is very strongly recommended.

No User Serviceable Parts Inside

HAZARDOUS VOLTAGES ARE PRESENT WHEN THE COVER IS REMOVED. Opening the chassis will void your warranty. If you suspect a malfunction with this product, call your dealer or the Cellular Specialties Support Line at: **(603) 626-6677, Toll Free (USA) 1-877-844-4274.**

Important Safety Information

Antennas used for the purpose of radiating signals indoors are limited to a *maximum* gain of 3 dBi. Each antenna must be positioned to observe minimum separation requirements from all users and bystanders. The following guidelines should be used when considering separation distances.

INDOOR antennas must be placed such that, under normal conditions, personnel cannot come within 20 cm (~8.0 in.) from any inside antenna. Adhering to this minimum separation will ensure that the employee or bystander cannot exceed RF exposures beyond the maximum permissible limit as defined by section 1.1310 i.e. limits for General Population/Uncontrolled Exposure.

Acronyms and Definitions

3GPP2	The standards body comprised of representatives of interested companies that is responsible for the development and maintenance of the operational standards for the CDMA2000 system. Http://www.3gpp2.org
AGC	Automatic Gain Control
CDMA	Code Division (or, Domain) Multiple Access: The general term for the technology used in the CDMA2000 system as well as others. Also a shorthand reference to the CDMA2000 system and its derivatives such as 1xEV-DO
Chip	A single element, a '1' or a '0', of the PN Sequence in a CDMA system. The chip rate for the CDMA2000 system is 1.2288 Mchips/second.
CSI	Cellular Specialties Incorporated
DAS	Distributed Antenna System
ERP	Effective Radiated Power
EST	Even Second Tick: In the CDMA2000 cellular system all time values are referenced to the start of the even seconds of time as indicated by GPS.
FCC	Federal Communications Commission
FPGA	Field Programmable Gate Array
GPS	Global Positioning System
IF	Intermediate Frequency
LED	Light Emitting Diode
NEMA	National Electrical Manufacturers Association
PA	Power Amplifier
PN	Pseudo random Number: A number chosen by some algorithm that approximates a random process. Can be short for "PN Sequence", "PN Number", or "PN Offset" when discussing the CDMA2000 system.
PN Number	In the CDMA2000 system only a subset of the possible PN Offsets are used for base station identification. Each of these allowed offsets is given a unique number from 0 to 511.
PN Offset	In the CDMA2000 System each base station is identified by the offset in time from the EST at which the start of the Pilot PN Sequence occurs. The offset is specified in terms of number of chips.
PN Sequence	A sequence of pseudo random numbers. In the CDMA2000 system several such sequences are used. The one relevant to ICEBreaker is the Pilot, or Short, sequence which is a 2^{15} element long sequence of ones and zeros.
PPS	Pulse per Second: Refers the pulse repetition rate of the timing signal used as a time reference.
RF	Radio Frequency
SBC	Single Board Computer
Tau	Timing Offset or Delay Adjustment: In the CDMA2000 system the timing of the downlink signal is required to be aligned with the EST as it is transmitted from the antenna. Tau allows the timing of the internal PN Sequence to be adjusted to compensate for the delays of the base station hardware such that the timing will be correct at the antenna
USB	Universal Serial Bus

Product Introduction

The pilot beacon generator facilitates E911 and other location based services (LBS) for in building and/or DAS based installations of CDMA2000/1xEV-DO cellular networks. In these situations the normal methods based for location determination, direct reception of GPS by the mobile station or triangulation using the signals from multiple base stations, do not work. Signals from the GPS system are sufficiently weak that even if the mobile station's GPS receiver might ultimately be able to lock on to the satellites, the acquisition time will be too long. And since indoor service is typically provided either by a single strong local cell or by using a repeater, there aren't multiple signals on which to triangulate while DAS based deployments result in too many signals with indeterminate timing. By placing a pilot signal at a known PN offset the LBS algorithm can quickly and reliably be made aware that it is within a specific building or other location where normal location determining solutions are ineffective. This information can be used to aid the GPS receiver in acquiring signals if they are present or be used as a position report directly until more accurate information becomes available.

Functional Overview

Electrical Characteristics

Characteristic	Performance Limit
Number of Bands per Beacon	1
CDMA Band Class	0 (Cell), 1 (PCS) and 15 (AWS)
Max # Simultaneous Channels/Beacon	8 (Cell) 11 (PCS and AWS)
Number of Unique PN Offsets/Beacon	1
Composite TX Power	+20 dBm
Spurious Emissions Limits	< -45 dBc Δf .75 to 1.98 MHz < -60 dBc Δf 1.98 to 4.0 MHz < -65 dBc Δf 4.0 to 16 MHz < -75 dBc Δf > 16 MHz
Carrier Frequency Accuracy	20 Hz (.2 ppm) Cell Band 40 Hz (.2 ppm) PCS Band 45 Hz (.2 ppm) AWS Band When locked to GPS
Pilot Timing Jitter	< 10 nsec rms, <50 nsec peak
Rho	> 0.98
Tau Adjustment Range	- 166.7 to + 166.7 μ sec (+/- 25.6 CDMA chips)
Tau Adjustment Resolution	20 nsec (one 40th of a CDMA chip)

Mechanical Specifications

Parameter	Specification	Notes
Pilot Beacon Size		
Height	1.73 in.	
Width	19.00 in.	
Depth	18.02 in.	
Weight	8.4lbs / 3.8kg	
Thermal Management	Fan Cooled	
Surface Coating	Powder Coat	
Color	Satin Black	

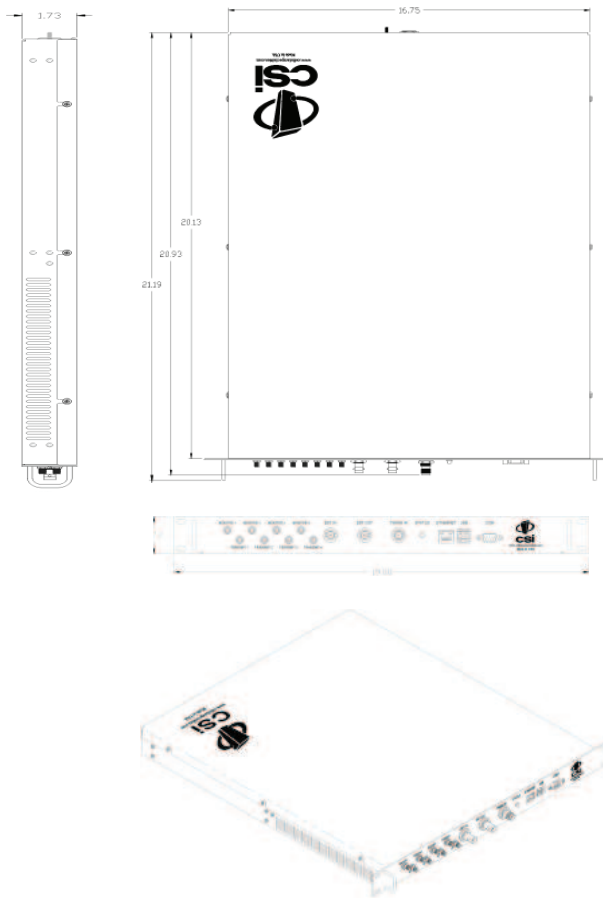
AC Power Specifications

Parameter	Specification	Notes
AC Voltage	100 - 240 VAC	External Power Supply
AC Current	1.7 Amps 0.9 Amps	@ 120 VAC @ 230 VAC
AC Power Frequency	47 - 63 Hz	
Heat Output	500 BTU/Hr	

Environmental Requirements

Parameter	Specification	Notes
Temperature Range	-30° to +48°C (-22° to +118°F)	
Relative Humidity	5% to 95%	Non-condensing

Mechanical Drawing

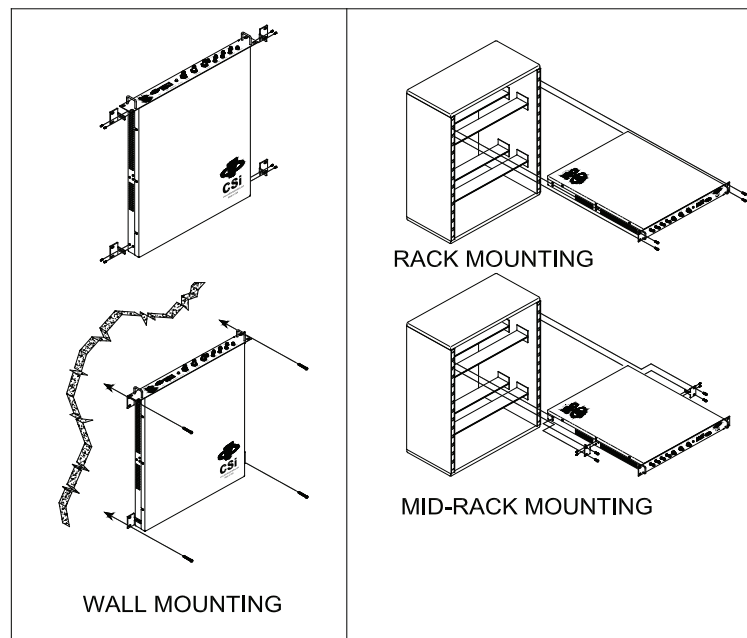


System Set-Up Considerations

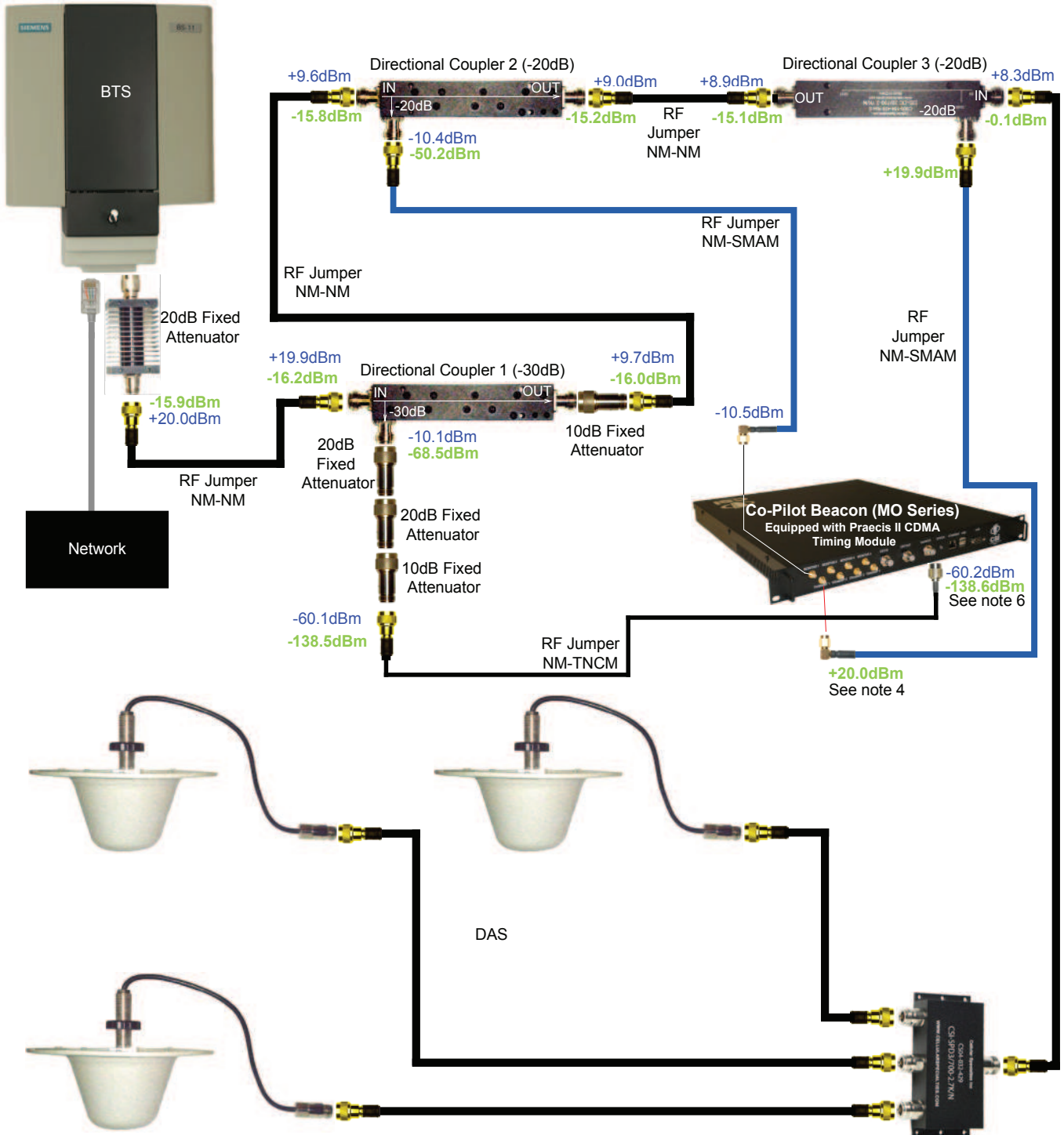
All cables should be checked for shorts and opens. Also verify that there are no cables with loose or poor connections. It is critical that the installer contact the service provider before the system is turned on.

Mounting the Co-Pilot Beacon

The following diagram illustrates the best method for mounting the pilot beacon to a wall in an typical installation.



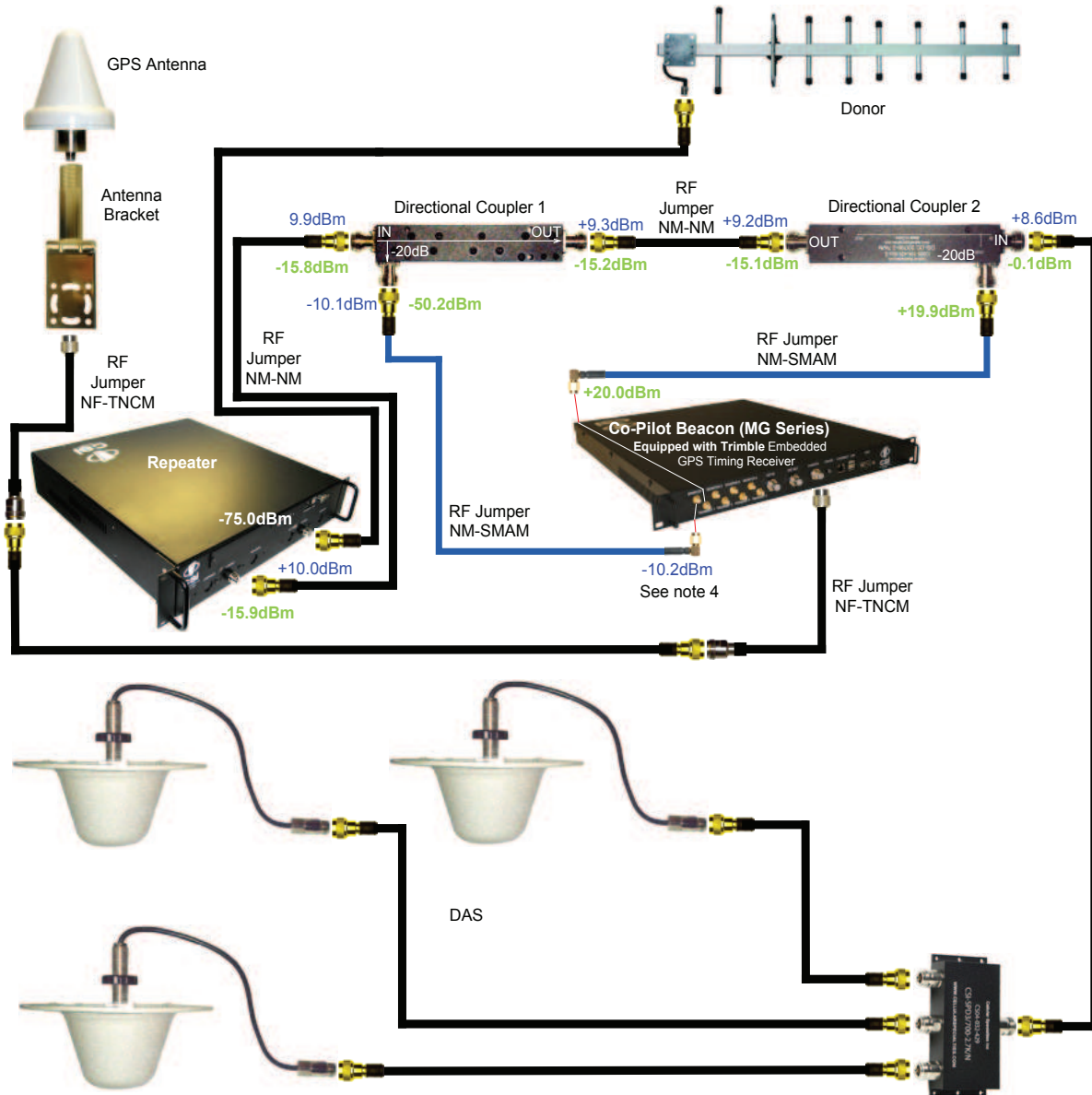
Typical Co-Pilot/BTS Interconnection with Internal CDMA Timing (MO Series)



Notes:

1. It is recommended that all unused ports be terminated at 50 ohms. When properly terminated, the possibility of false shutdown is minimized because high reflections at open ports are eliminated.
2. The values shown in this drawing are only an example. Power levels encountered at each installation may require different coupling, pads, and threshold values.
3. This example assumes a BTS with power at the output set to 40dBm, co-pilot beacon output set at 20dBm.
4. Threshold Power Level in this example is set to -20dBm (Approximately 10dB below the power level at the monitor input.)
5. DAS Power Detection and Shutdown functionality:
 - If **RF Detector** measures Input power lower than the **Threshold Power Level** set by the user, then the Co-Pilot Beacon's RF power output will be shut down.
 - An alarm occurs. (Delay approximately one second on-off and one second off-on.)
6. Co-pilot beacon signal reflecting back to the input of the CDMA timing source must never be allowed to exceed -124dBm.

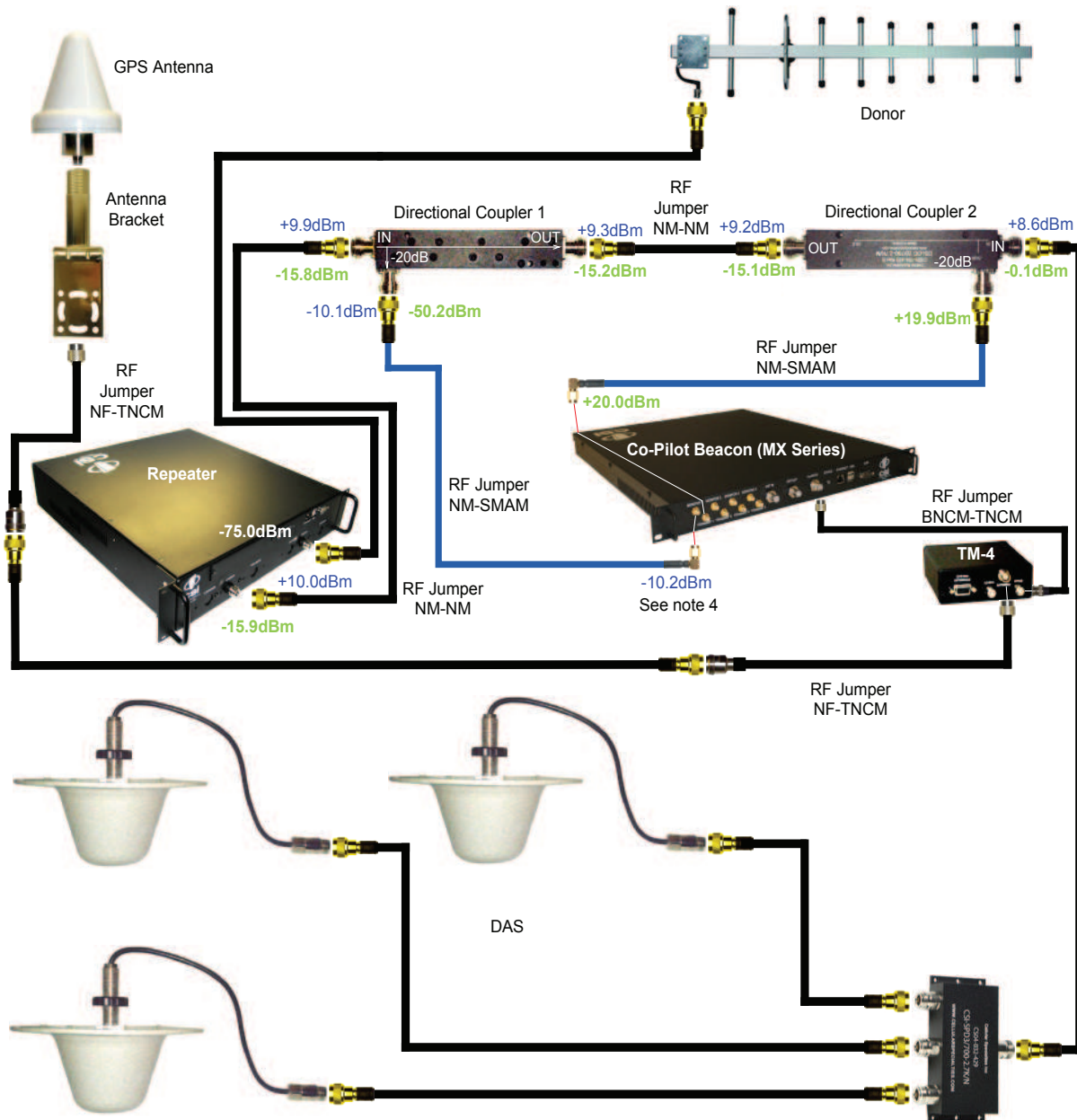
Typical Co-Pilot/Repeater Interconnection with Internal GPS Timing (MG Series)



Notes:

1. It is recommended that all unused ports be terminated at 50 ohms. When properly terminated, the possibility of false shutdown is minimized because high reflections at open ports are eliminated.
2. The values shown in this drawing are only an example. Power levels encountered at each installation may require different coupling, pads, and threshold values.
3. This example assumes **-75dBm** input at the repeater, repeater gain set to 85dB, co-pilot beacon output set to 20dBm and use of 20dB directional couplers with 20dB coupling, and assumed 15dB worst case directivity.
4. Threshold Power Level in this example is set to **-20dBm** (Approximately 10dB below the power level at the monitor input.)
5. DAS Power Detection and Shutdown functionality:
 - If **RF Detector** measures Input power lower than the **Threshold Power Level** set by the user, then the Co-Pilot Beacon's RF power output will be shut down.
 - An alarm occurs. (Delay approximately one second on-off and one second off-on.)

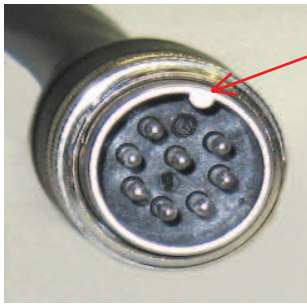
Typical Co-Pilot/Repeater Interconnection with External TM-4 (MX Series)



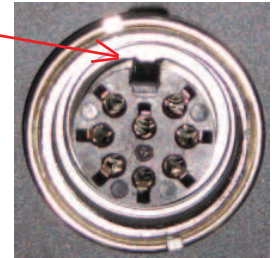
Notes:

1. It is recommended that all unused ports be terminated at 50 ohms. When properly terminated, the possibility of false shutdown is minimized because high reflections at open ports are eliminated.
2. The values shown in this drawing are only an example. Power levels encountered at each installation may require different coupling, pads, and threshold values.
3. This example assumes -75dBm input at the repeater, repeater gain set to 85dB, co-pilot beacon output set to 20dBm and use of 20dB directional couplers with 20dB coupling, and assumed 15dB worst case directivity.
4. Threshold Power Level in this example is set to -20dBm (Approximately 10dB below the power level at the monitor input.)
5. DAS Power Detection and Shutdown functionality:
 - If **RF Detector** measures Input power lower than the **Threshold Power Level** set by the user, then the Co-Pilot Beacon's RF power output will be shut down.
 - An alarm occurs. (Delay approximately one second on-off and one second off-on.)

Warning: Power supply cable connector is keyed for proper orientation and is designed to lock into place.



Keyed for proper alignment, do not force connector into place.



Optional Accessories

A complete line of accessories is available from Cellular Specialties, Inc. Check with your CSI distributor for any additional items needed. Below are just a few examples suitable for most in-building needs.

- **Inside Omnidirectional Antenna**
 - Quad-band - model number: **CSI-AO/700/2.7K/3**
 - **Directional Couplers**
 - 6dB - model number: **CSI-DC6/700-2.7K/N**
 - 10dB - model number: **CSI-DC10/700-2.7K/N**
 - 15dB - model number: **CSI-DC15/700-2.7K/N**
 - 20dB - model number: **CSI-DC20/700-2.7K/N**
 - 30dB - model number: **CSI-DC30/700-2.7K/N**
 - **Power Dividers**
 - 2:1 - model number: **CSI-SPD2/700-2.7K/N**
 - 3:1 - model number: **CSI-SPD3/700-2.7K/N**
 - 4:1 - model number: **CSI-SPD4/700-2.7K/N**
 - **Grounding Kit** - model number: **CSI-GKIT**
 - **Lightning Arrestor** - model number: **CSI-CAP**
- Battery backup, 4 hr Single band
2 hour dual band - model number: **CS48-985-601**

Important Installation Notes

- The installer should refer to the Safety Guidelines section and the Important Safety Information section for proper antenna selection and installation. To avoid serious injury or death and damage to the pilot beacon, do not install server antennas near overhead power lines or high power components. Allow enough distance so that if antennas should fall they will not come in contact with those components.
- Close proximity to the server antennas with the pilot beacon in operation may expose the user or installer to RF fields that exceed FCC limits for human exposure.

WARNING! PILOT BEACON AND/OR HANDSET DAMAGE **MAY** OCCUR IF A HANDSET IS CONNECTED DIRECTLY TO THE PILOT BEACON OR THE COAX THAT LEADS TO THE PILOT BEACON.

Powering Up the Unit

During Power up, the pilot beacon will require approximately three minutes for the internal computer to boot up. During this time the LED on the front panel may light and go out several times. When boot is complete and no alarm conditions exist, the LED indicators will be illuminated green.

Do not unplug the unit while it is in the boot up process!

Local Communication Interface Ports

To allow monitoring and control, the pilot beacon is equipped with four ports that provide external communication access (1 Ethernet CAT-5, 1 DB-9 serial, and 2 USB). The Ethernet, CAT-5 port is provided as a primary communications port to the PC. One serial interface, COM 1, can provide communications to local PC. The USB interface provides a means to download files from a memory device. The DB-9 pin assignments of COM 1 conform to the standard Electronic Industries Association (EIA232) specification. A diagram of the pin descriptions is provided on the next page for reference.

Connecting a null modem cable to the COM 1 port and using a terminal emulation program with a PC will allow communication to the control processor's Text Menu Interface (TMI) for trouble shooting and advanced diagnostics. Call CSI technical support for assistance if you need to access these advanced features or for further information.

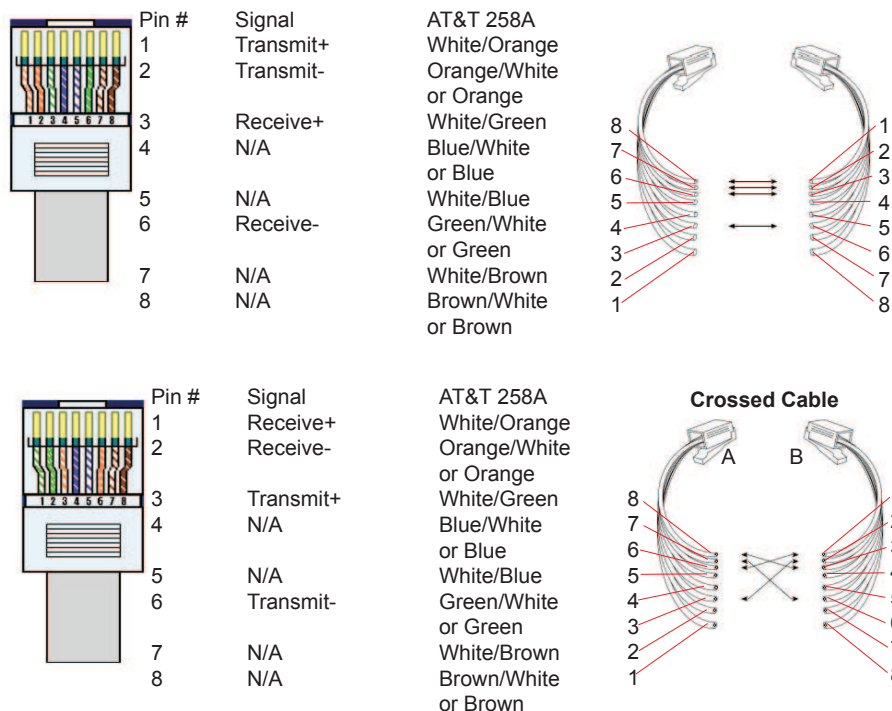
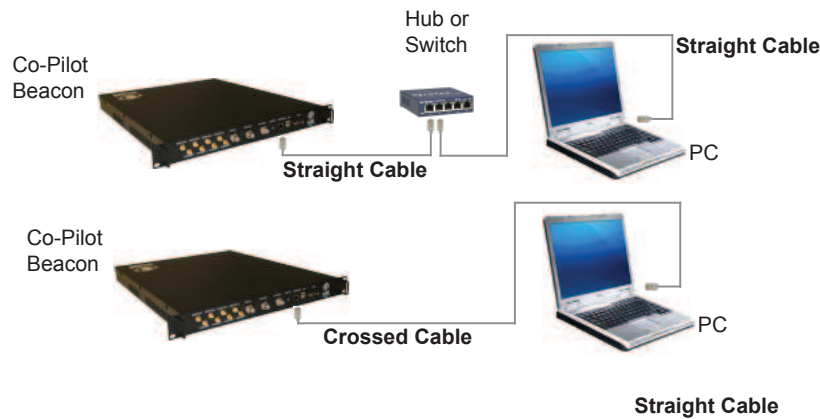
The proprietary external GPS receiver connection is made at the port labeled "GPS". **Do not connect other devices or non-straight-through serial extension cables to this port.** Place the GPS receiver in a location with the best view of the unobstructed sky that is possible, although a 100% open view of the sky is not necessary to achieve a stable time lock.

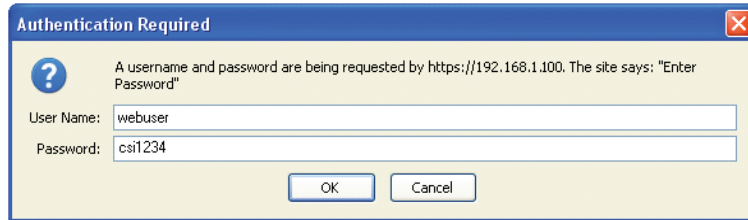
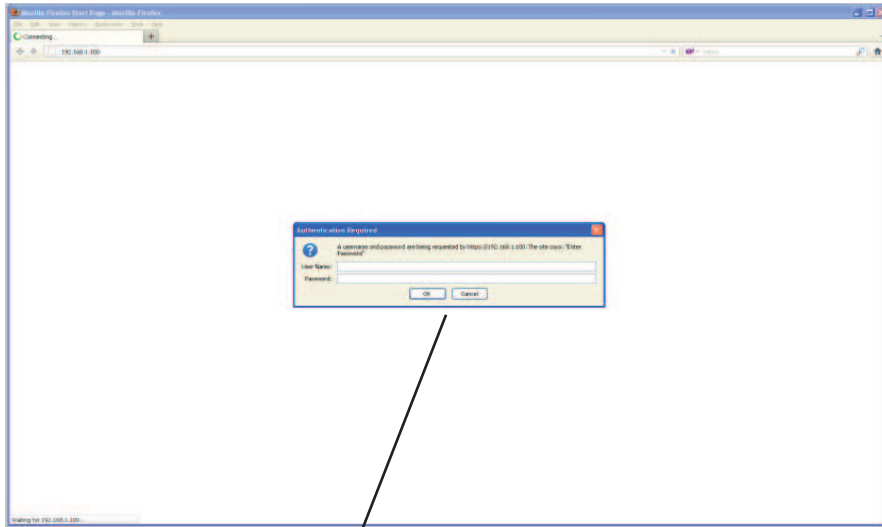
Web based GUI Session

Primary access to the unit is gained using a LAN connection and a web browser program such as Firefox by Mozilla, or Internet Explorer from Microsoft. The beacon ships with the default IP address of 192.168.1.100, but it can be changed later if required.

Connecting directly to the unit from a laptop or PC **with a crossed CAT-5E cable** or over a LAN the user types the IP address of the unit into the browser address line to connect. Most users will need to update the TCP/IP settings on their computer to enable connection to a host that has a static IP. Select "Use the following IP Address" and enter the IP Address as follows: 192.168.1.x, where "x" = any number from 2 to 254 inclusive other than 100. The subnet mask is 255.255.255.0. Questions pertaining to these settings should be referred to the user's IT department or you may refer to the Additional Tips section at the end of this manual. When connection is made the user will be prompted for a user name and password. For the purpose of the GUI session, the default user name is **webuser** and the password is **csi1234**. This can also be changed as required. Internet access is not required to use the GUI. If you are connecting using a laptop, verify that your Ethernet port is powered. Some laptops will not allow Ethernet connection when on battery power. If this is the case with the laptop you are using you will need to plug it in or update the power settings. °See below for detail with regard to cables and connecting to your PC.

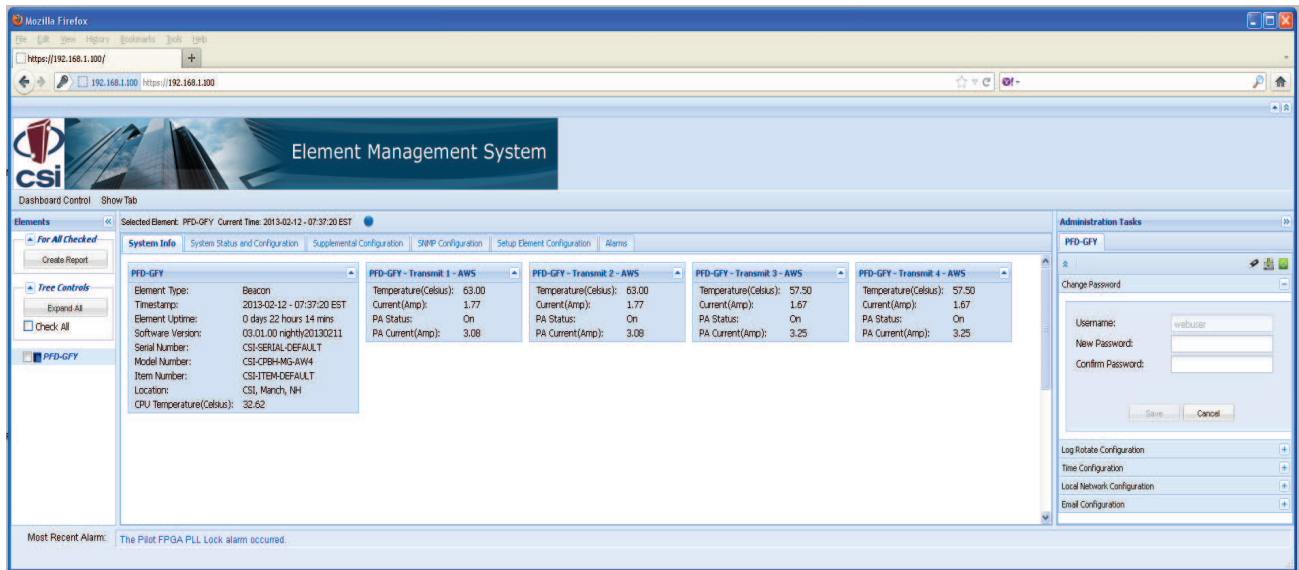
The diagram below shows the normal use of Crossed and Straight cables.





Element Management System

System Info Tab



After a successful login the Element Management System (EMS) is displayed with the System Info tab shown. This tab contains status information about the element that is selected in the element tree.

System Status and Configuration Tab

This tab contains various panels that provide the ability to change data that is related to system administration of the element.

The Beacon Control is used to set values that are common to all of the Beacon Transmitters in this element. Note - the timing synch source must be selected in order to activate the transmitters.

Beacon Transmitter Control panels shown collapsed here but can be expanded or moved as desired by the user.

The System Status and Configuration tab provides the ability to change various element specific parameters. The configuration panel, expanded and displayed here, is specific to the type of the element that is selected in the element tree. The Beacon Control panel as shown here allows the user to change beacon specific data such as CDMA channels

The Log Rotate Configuration panel contains parameters used to configure archived system log files.

File Count: 10

File Size (Kilobytes): 100

Save Reset

Above is illustrated the expanded Log Rotate Configuration panel, found in the Administration Tasks section, and an important, very useful feature of the EMS, the Tool Tips. When the user hovers his cursor over any tab or icon a tool tip appears to explain the function or feature. Because of the tool tips not all tabs, panels and features will be shown in full detail in this manual.

Power Detector Settings - Transmit 1 - AWS

Detected Power (dBm): -43.6

Shutdown: Enable Disable

Shutdown Threshold (dBm): -20.0

Transmitter Settings - Transmit 1 - AWS

Transmission: On Off

Per Channel Power (dBm): 9.0

Composite Power (dBm): 19.4

PN Settings - Transmit 1 - AWS

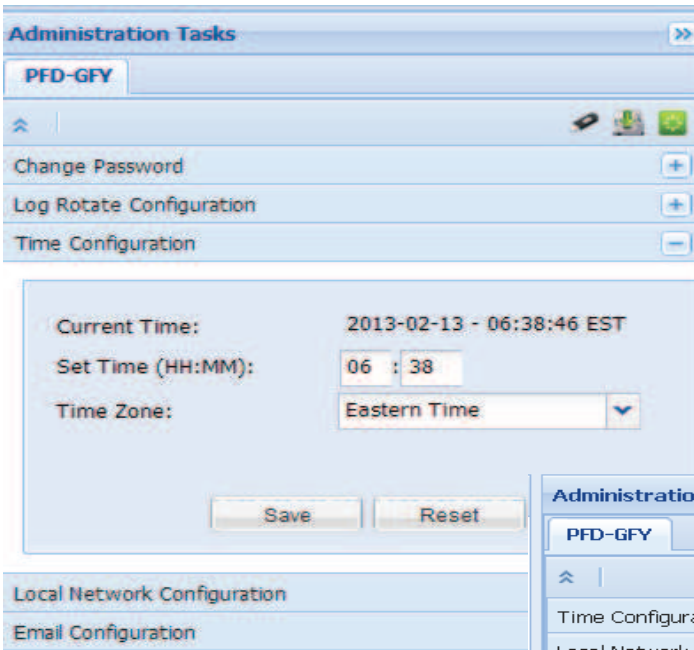
Name	PN Offset	Tau Delay Correction (µSecs)	Absolute Power Per Chan (dBm)	Relative Power Per Chan (dB)	Enabled
PNA	0	0.00	9.0	0.0	<input type="checkbox"/>

CDMA Channel Settings - Transmit 1 - AWS

Physical Channel Number	Enabled	Channel
1	<input checked="" type="checkbox"/>	90
2	<input checked="" type="checkbox"/>	91
3	<input checked="" type="checkbox"/>	92
4	<input checked="" type="checkbox"/>	93
5	<input checked="" type="checkbox"/>	94
6	<input checked="" type="checkbox"/>	95
7	<input checked="" type="checkbox"/>	96
8	<input checked="" type="checkbox"/>	97
9	<input checked="" type="checkbox"/>	98
10	<input checked="" type="checkbox"/>	99
11	<input checked="" type="checkbox"/>	100

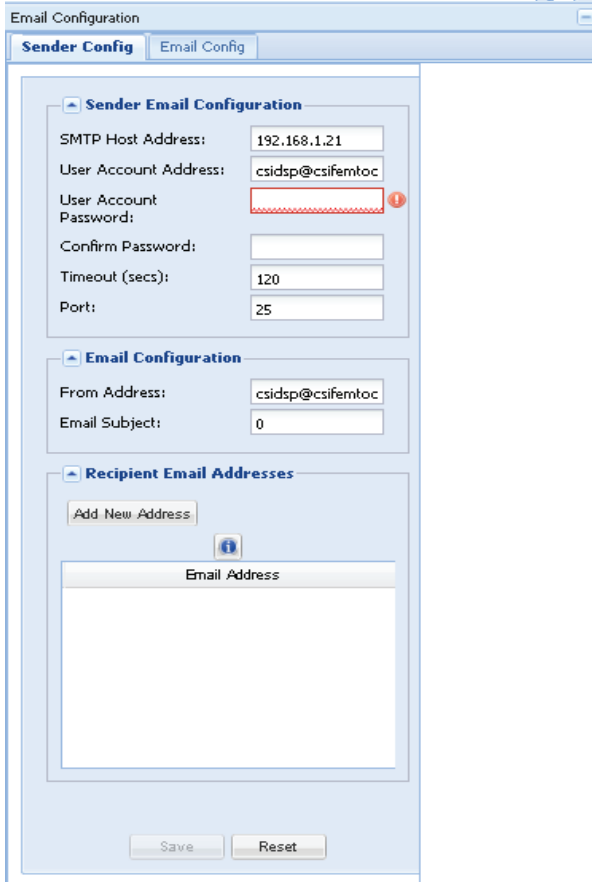
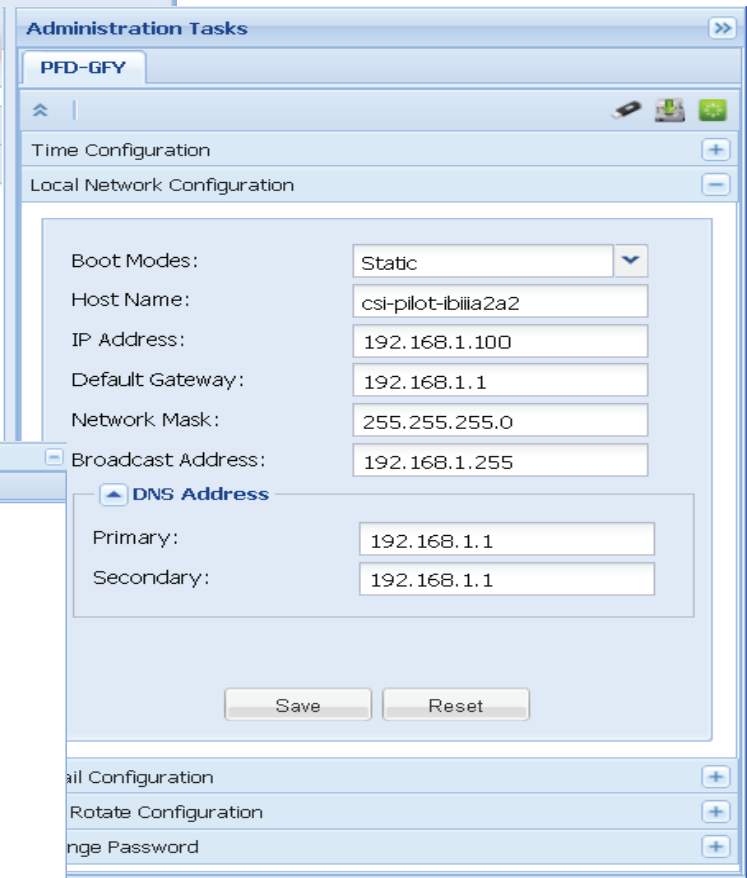
Save Reset

Administration Tasks Panel



The Time Configuration panel contains information to configure time settings, such as the current hour, minute, and time zone.

The Local Network Configuration Panel contains parameters such as Host Name, IP address and all other information needed for network configuration.

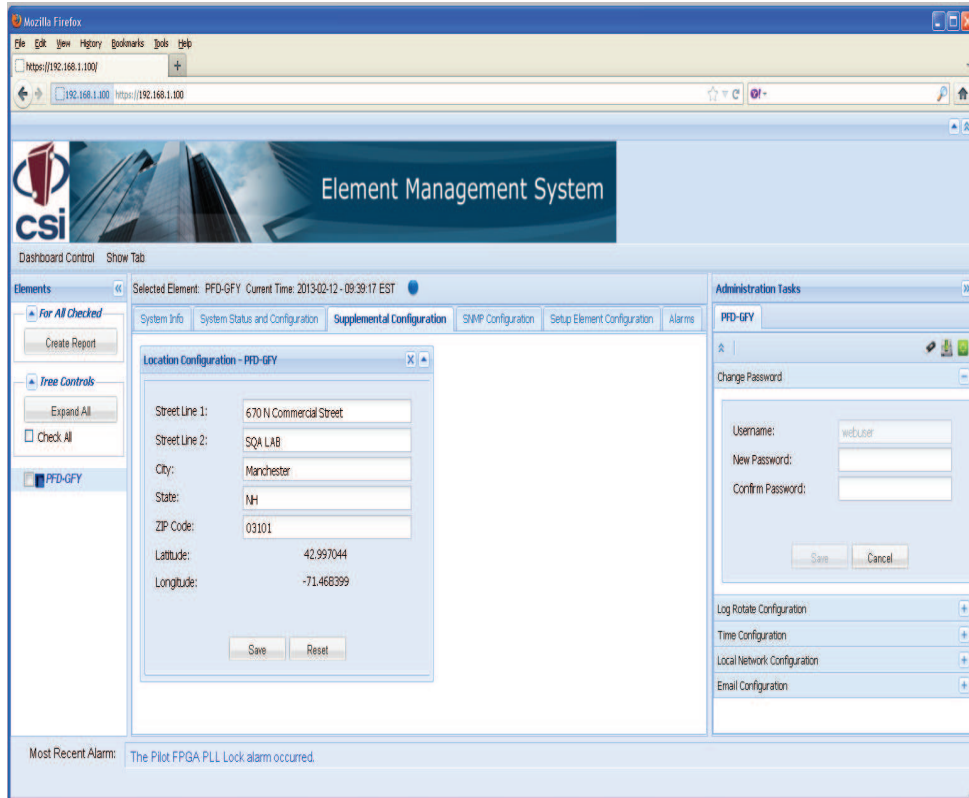


This panel provides the ability to configure Email related parameters.

The **Email Sender Config** tab provides the ability to configure information that will appear in an Email message that is sent when an alarm is configured on the Alarm Configuration panel to be reported to SNMP and the configured Email recipients.

The **Email Config** tab provides the ability to change parameters related to the configuration of the Email. It also allows the user to send a test Email.

Supplemental Configuration Tab

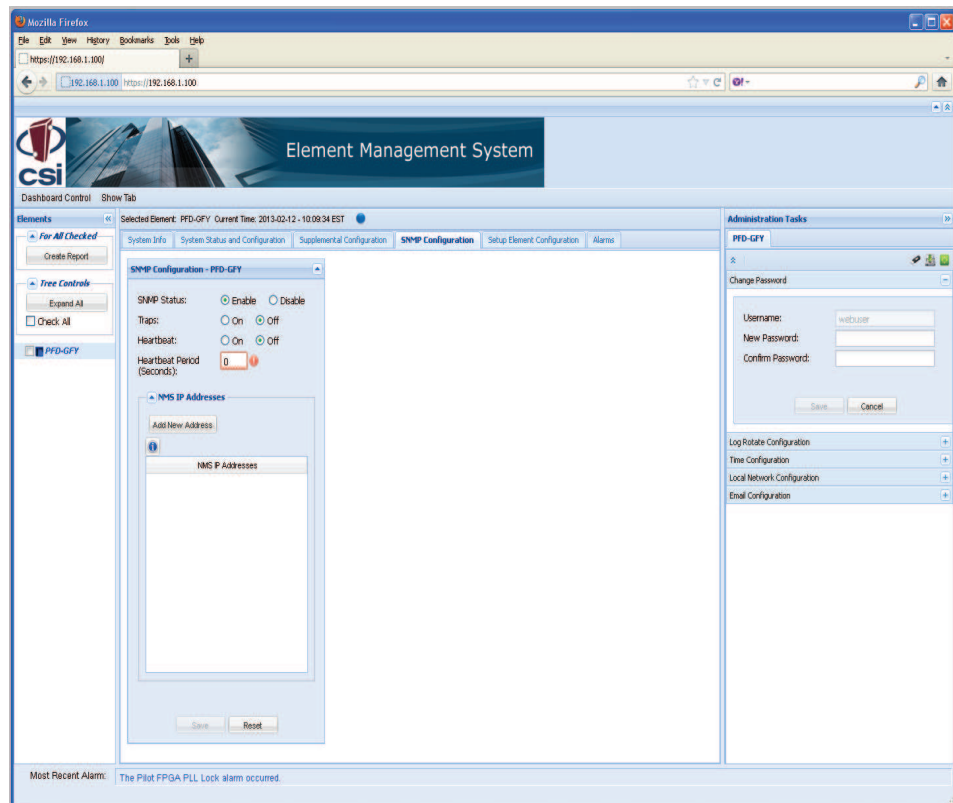


The Supplemental Element Configuration tab provides the ability to change other element specific parameters not supported on the System Status and Configuration tab. The panel displayed is specific to the type of the element that is selected in the element tree.

If the selected element is a beacon, a Location Information panel is shown. If the selected element is a repeater, a Filter Programming panel is shown.

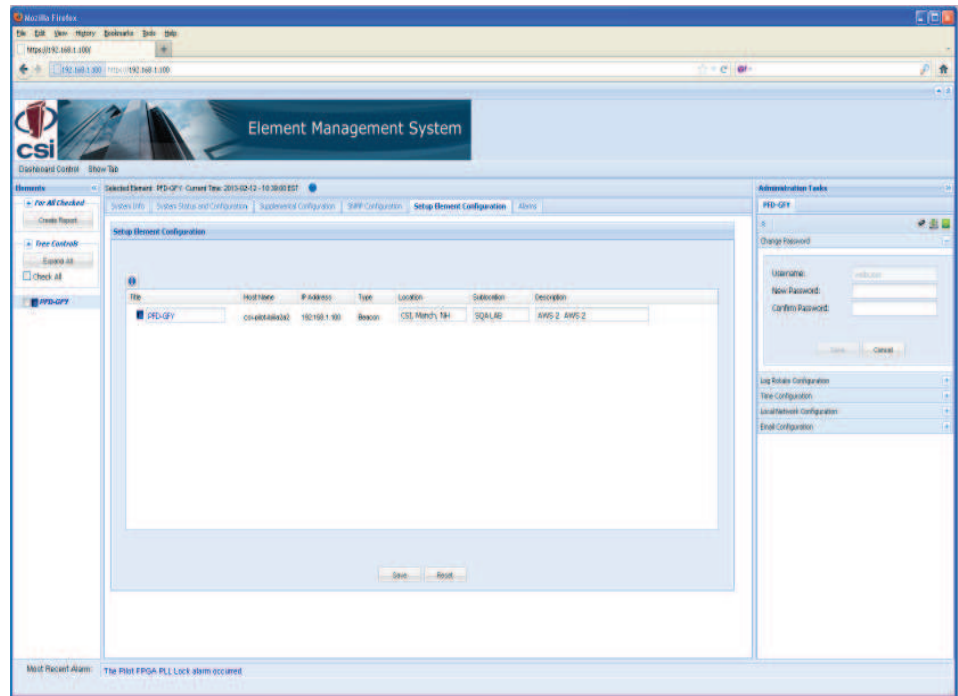
SNMP Configuration Tab

The SNMP Configuration tab provides the ability to change SNMP agent-specific parameters.

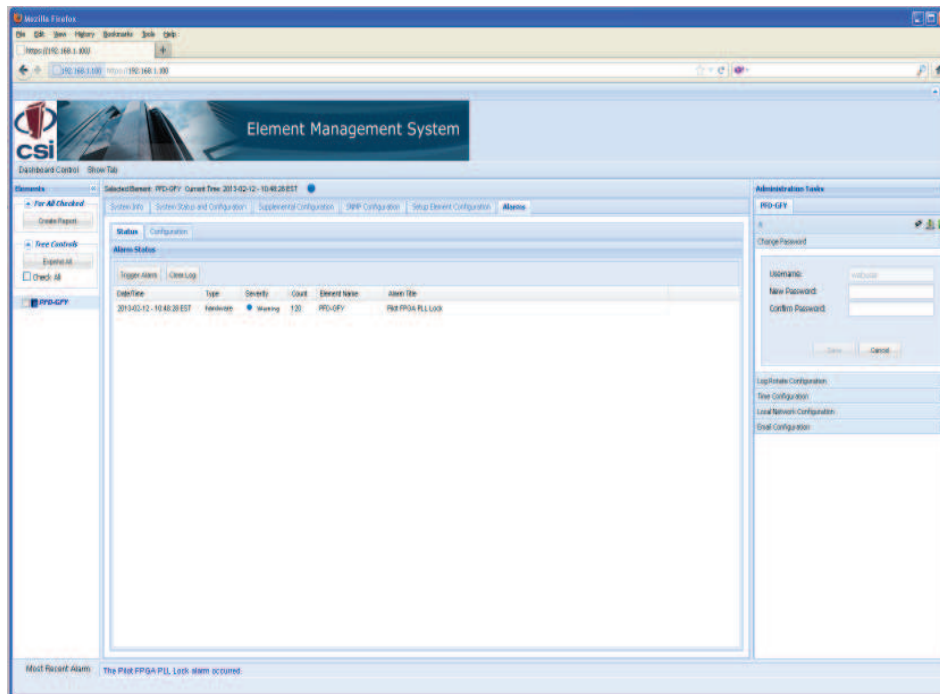


Setup Element Configuration Tab

The Setup Element Configuration panel allows the user to update identification information about the elements in the network.



Alarms Tab



The Alarms tab shows panels that allow the user to view the alarms on the element and to configure alarms for reporting to SNMP and the configured Email recipients.

Status panel shows alarms that exist on the element and their corresponding corrective actions. Hover over the Alarm Title to see a description and corrective action for any alarms that exist on the element. Alarms can be cleared and a test alarm can be triggered on this panel.

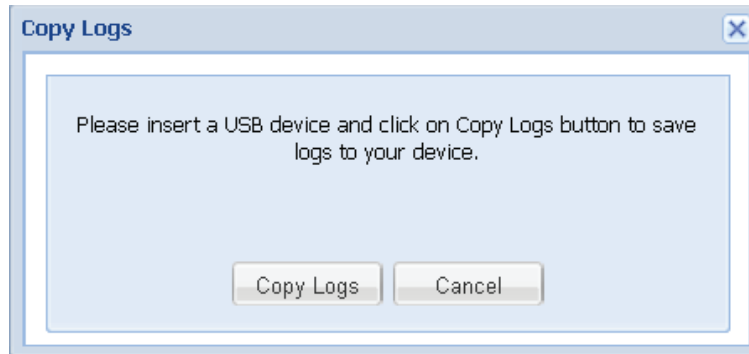
Configuration panel provides the ability to enable and disable the reporting of a particular alarm to SNMP and the configured Email recipients.

Special Icons

Copy Logs Icon



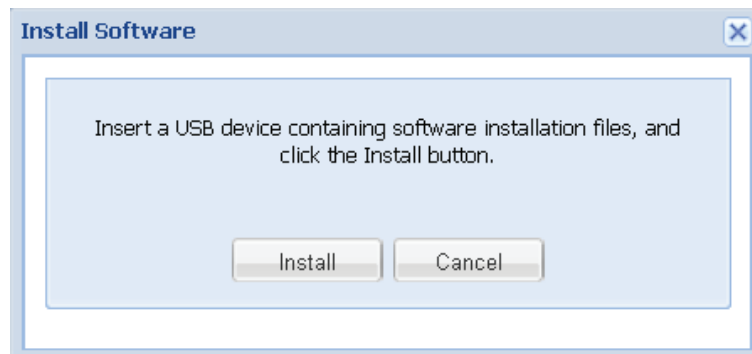
Clicking on the copy logs button will bring the user to the copy logs dialog box shown below. This feature will allow the user to copy the alarm logs to a thumb drive for archiving and analysis.



Install Software Icon



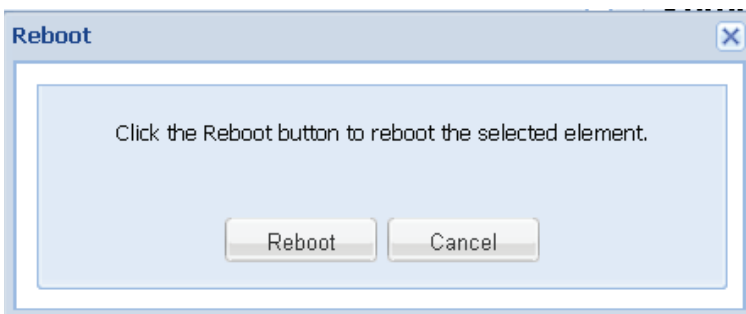
The Install Software button will bring the user to the Install Software dialog box shown below. This feature will allow the user to copy and install new software to the co-pilot beacon from a thumb drive.



Reboot Icon

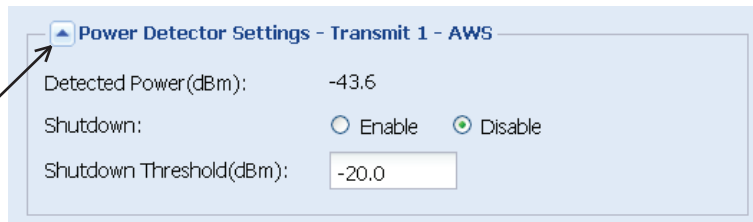


The Reboot button will bring the user to the Reboot dialog box shown below. This feature will allow the user to reboot the selected element from a thumb drive.



Collapse/Expand Icon

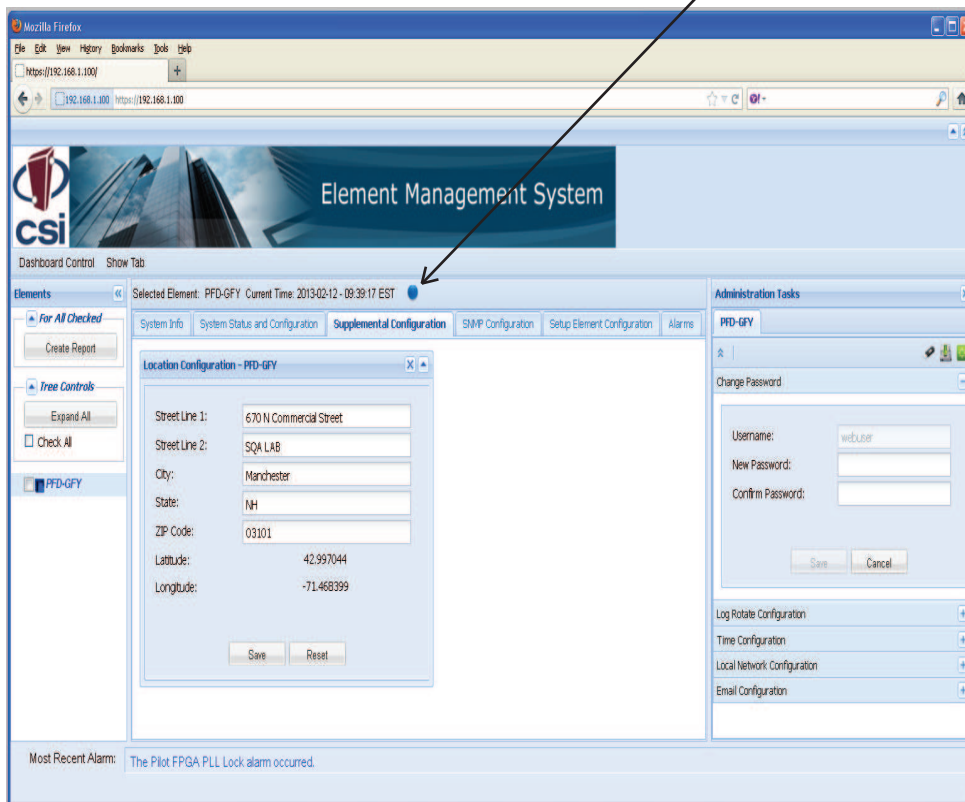
To collapse or expand any panel the user can click on this icon.

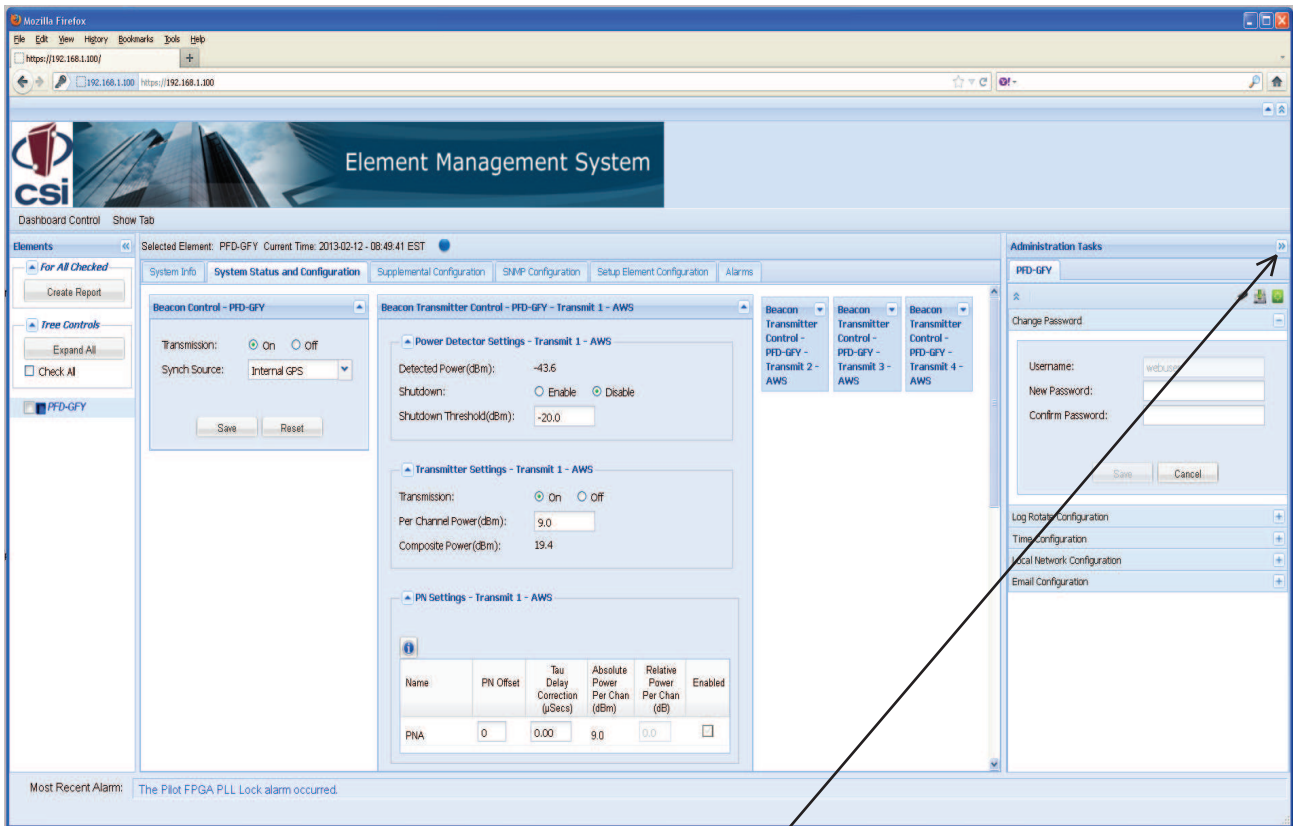


Alarm Status Icon



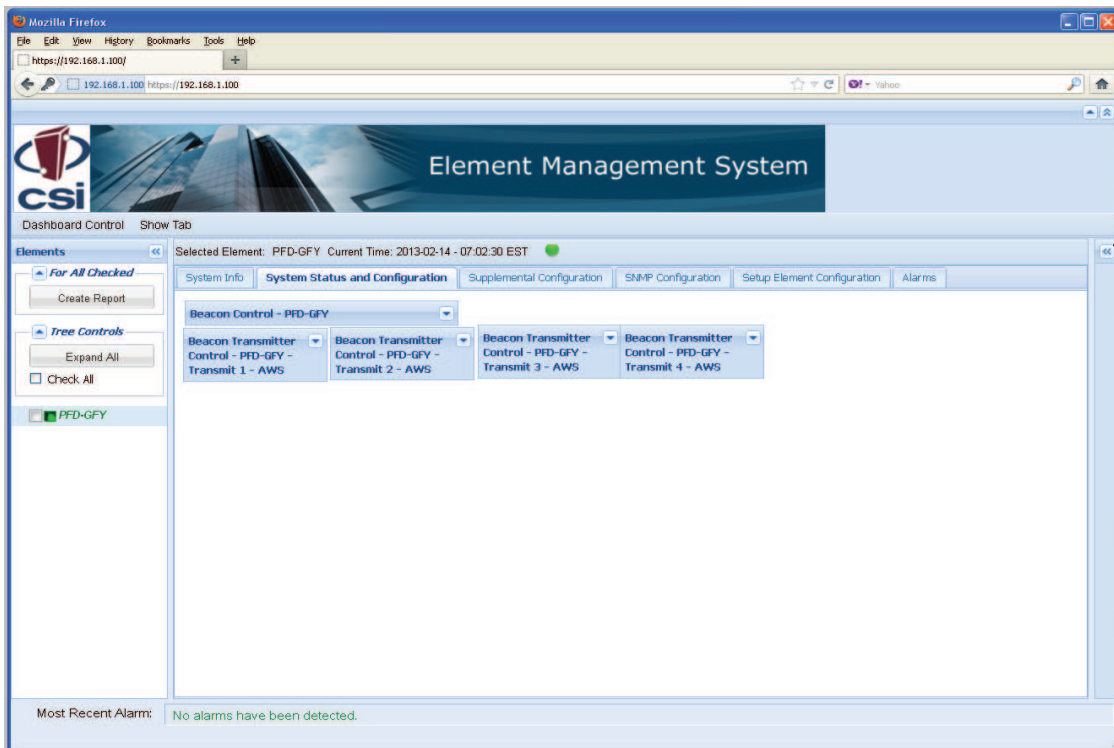
This icon indicates alarm status. When there are no alarms this icon is green. Major alarms will cause it to turn red. Clicking the icon will open the Alarms Tab so that the user can review the alarms.



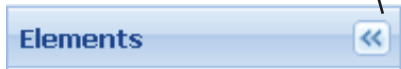
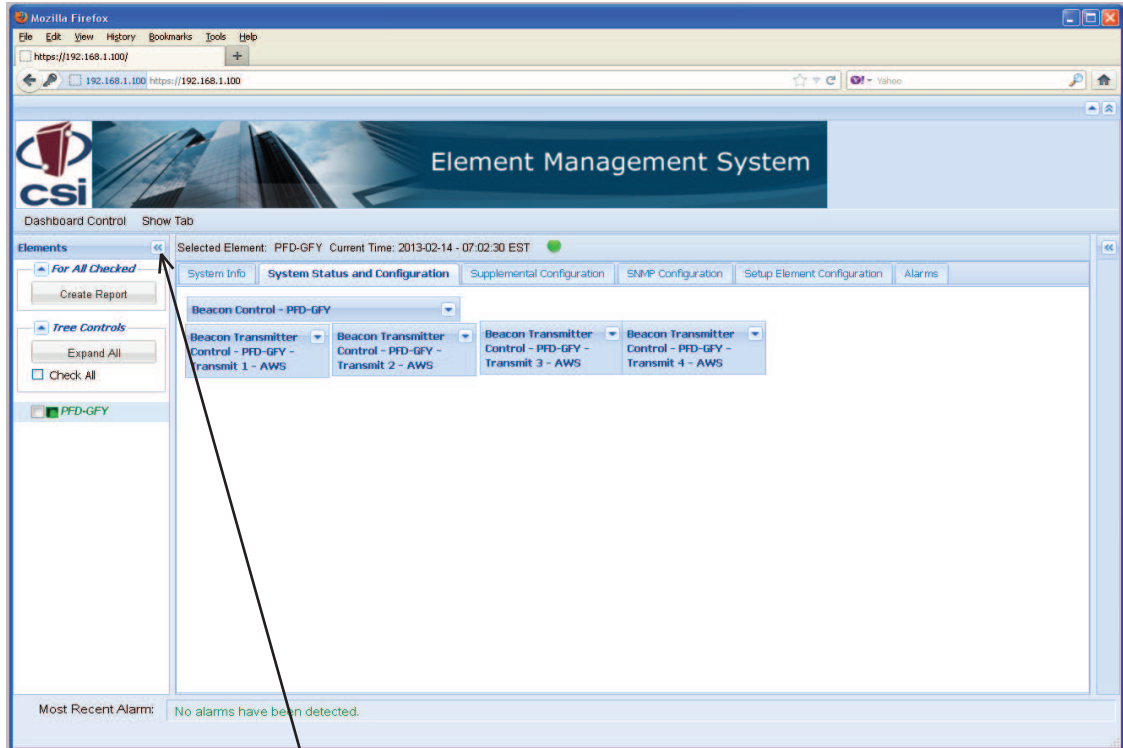


Administration Tasks

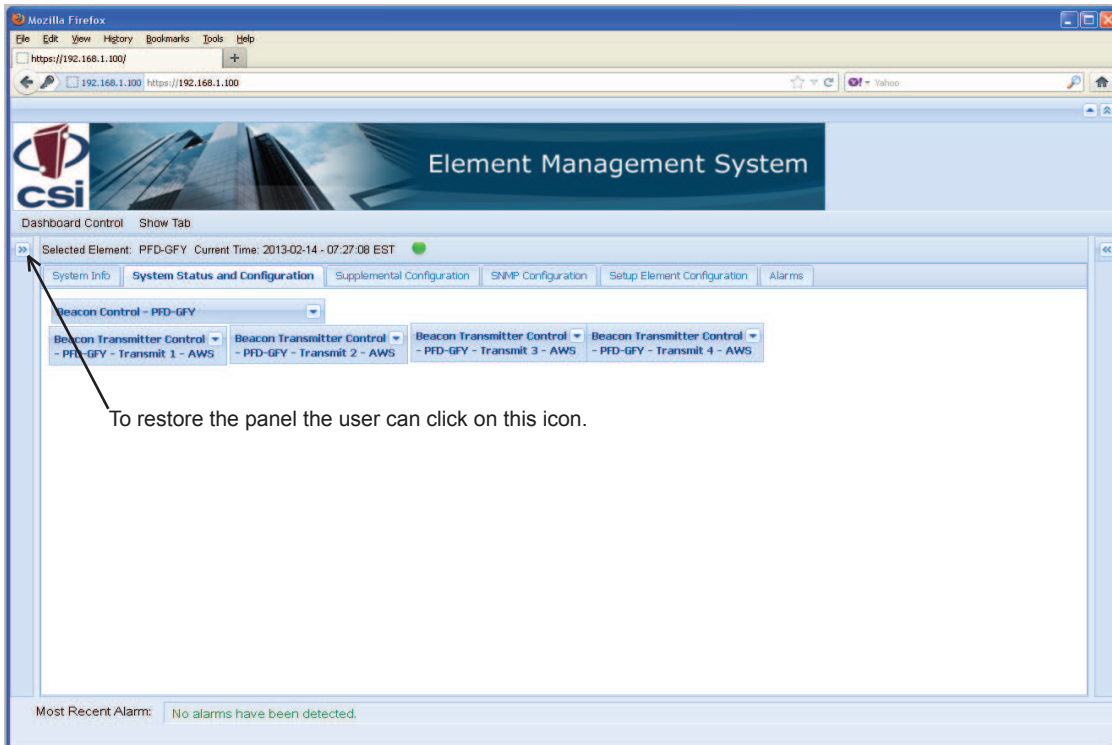
Administration Tasks Collapse/Expand Icon



To restore the panel the user can click on this icon.

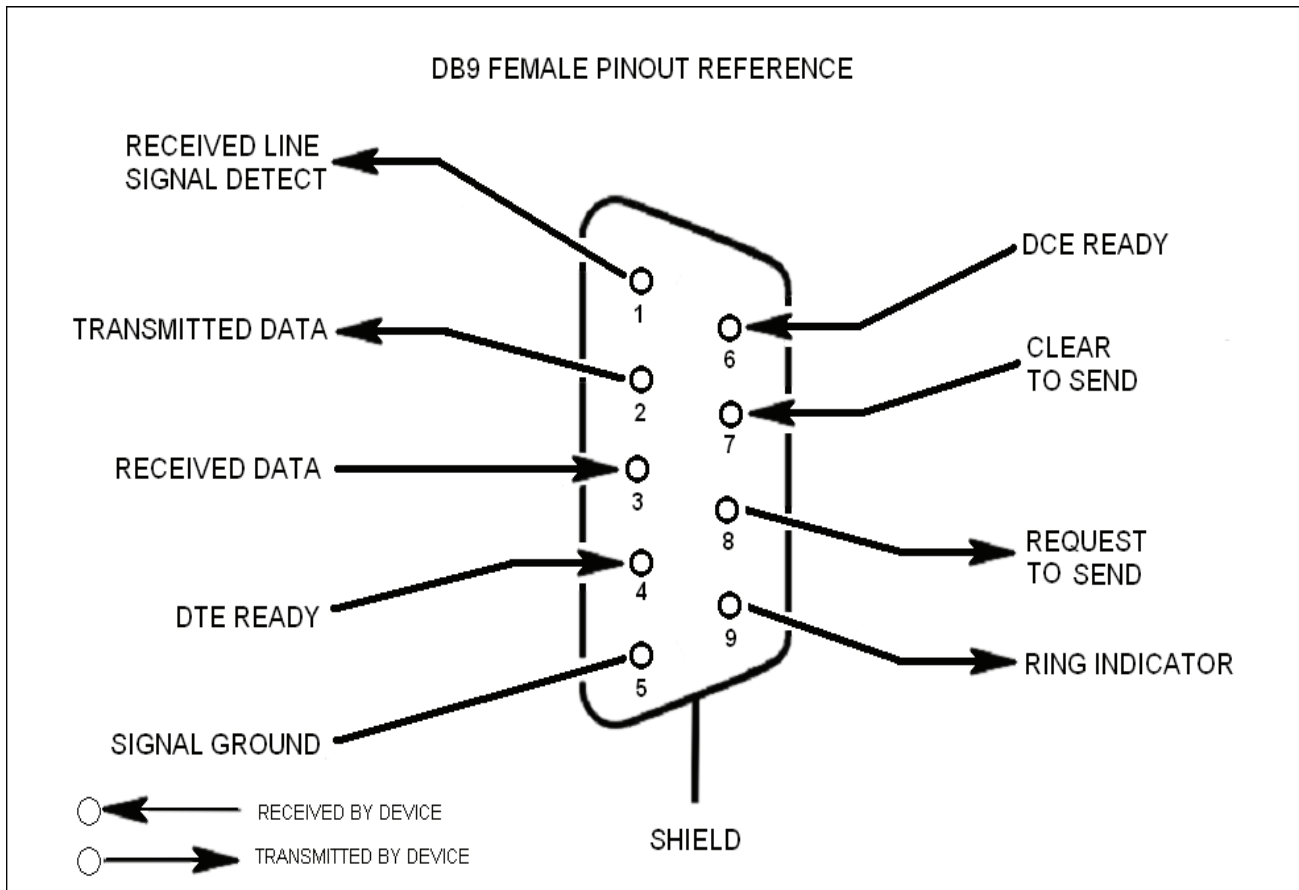


Elements Collapse/Expand Icon



To restore the panel the user can click on this icon.

EIA232 Pin Specifications



The diagram above is for reference only, it's intended to provide a quick source for pinout information in the event it should be necessary to adapt your serial cable because of an unusual connector configuration. In the vast majority of cases this information will not be needed.

USB Interface

The Universal Serial Bus (USB) interface conforms to Intel's Universal Host Controller Interface (UHCI) version 1.1 dated March 21, 1996. This interface will support data transfer rates up to 12 Mbps and can be used for software updates.

Ethernet

The Ethernet AUI conforms to IEEE 802.3 and is capable of supporting 10/100 Mbps communications speeds. This port is used to provide access to the UI.

Monitoring & Alarms

There are no physical connections provided to exclusively and specifically communicate system or alarm status. Information with regard to system or alarm status is provided by the GUI accessible via the communication ports described earlier.

Text Menu Interface

Local Access

Local access to the repeater Text Menu Interface, also known as the TMI or console interface, is made by connecting a Female to Female serial cable, (not supplied with the repeater or this software update), as shown in figure 1, from the serial connector of the laptop to either of the serial ports on the bottom end panel of the repeater. These connectors are labeled COM 1 and COM 2. In some cases, a gender adapter may be needed if the computer serial port or cable connectors are not the same as shown in figure 1. Figure 2 shows a connector gender adapter. In some cases when a newer laptop is used that does not have a serial port, a USB serial adapter may be required. A Tripp-Lite, model: USA-19HS is recommended. The USB media you've used for this upgrade should be inserted in an available USB port before starting the upgrade process.



Figure 1

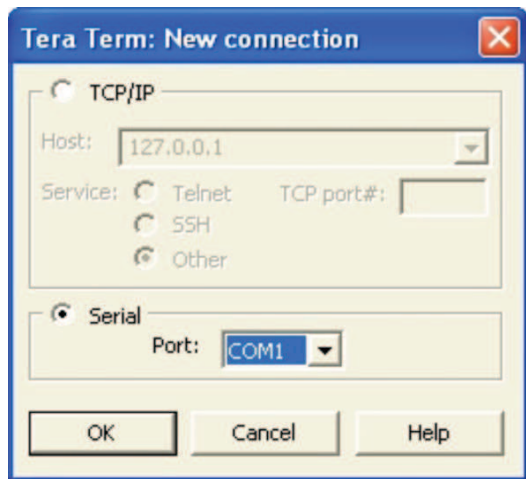
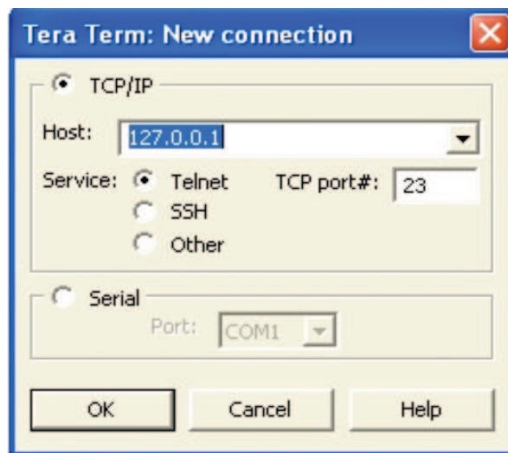


Figure 2

Many terminal emulation programs will work if properly configured. In the following description, "TeraTerm" is used to establish the TMI session. This program is readily available via the Internet and is free from Ayera Technologies at: <http://www.ayera.com/teraterm/>

TeraTerm Pro Web works on Windows 95/98, 2000, XP. Here is the latest TeraTerm Pro Web release: Version 3.1.3, October 8, 2002. ttp313.zip

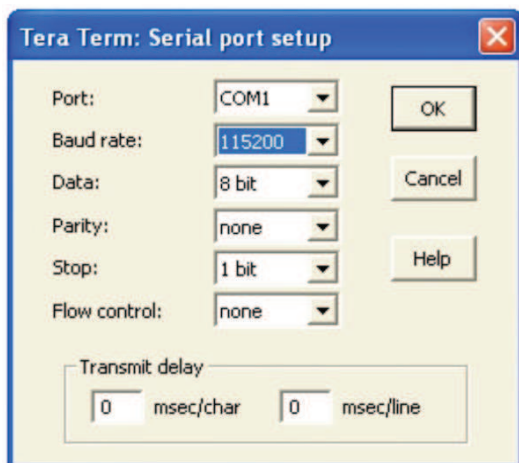
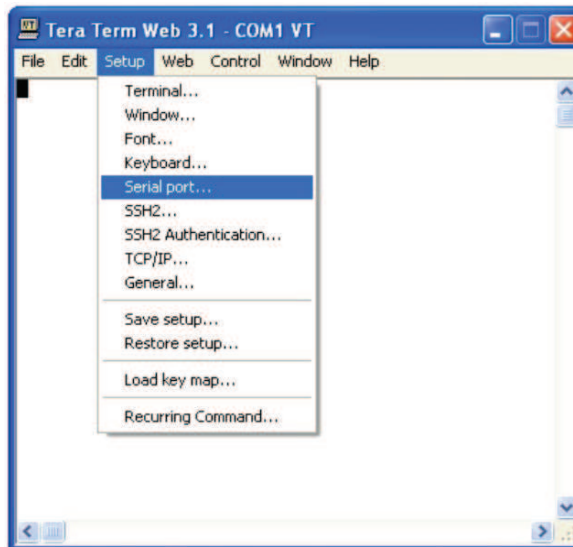
When the program is started, the following screen is displayed.



Select the Serial radio button and press OK as shown below.

Note: It may be necessary, in the System Properties section of the control panel; using Device Manager to determine what COM port your computer uses for the communications port. In this case it is COM 1. This is not to be confused with the serial port on the bottom panel of the repeater labeled COM 1.

Pressing "OK" will open up a blank dialog screen. Go to the setup dropdown menu and select Serial port to make changes to the serial port setup.



Configure the terminal program for the correct COM port, in this case COM 1 and 115200 baud rate as shown below.

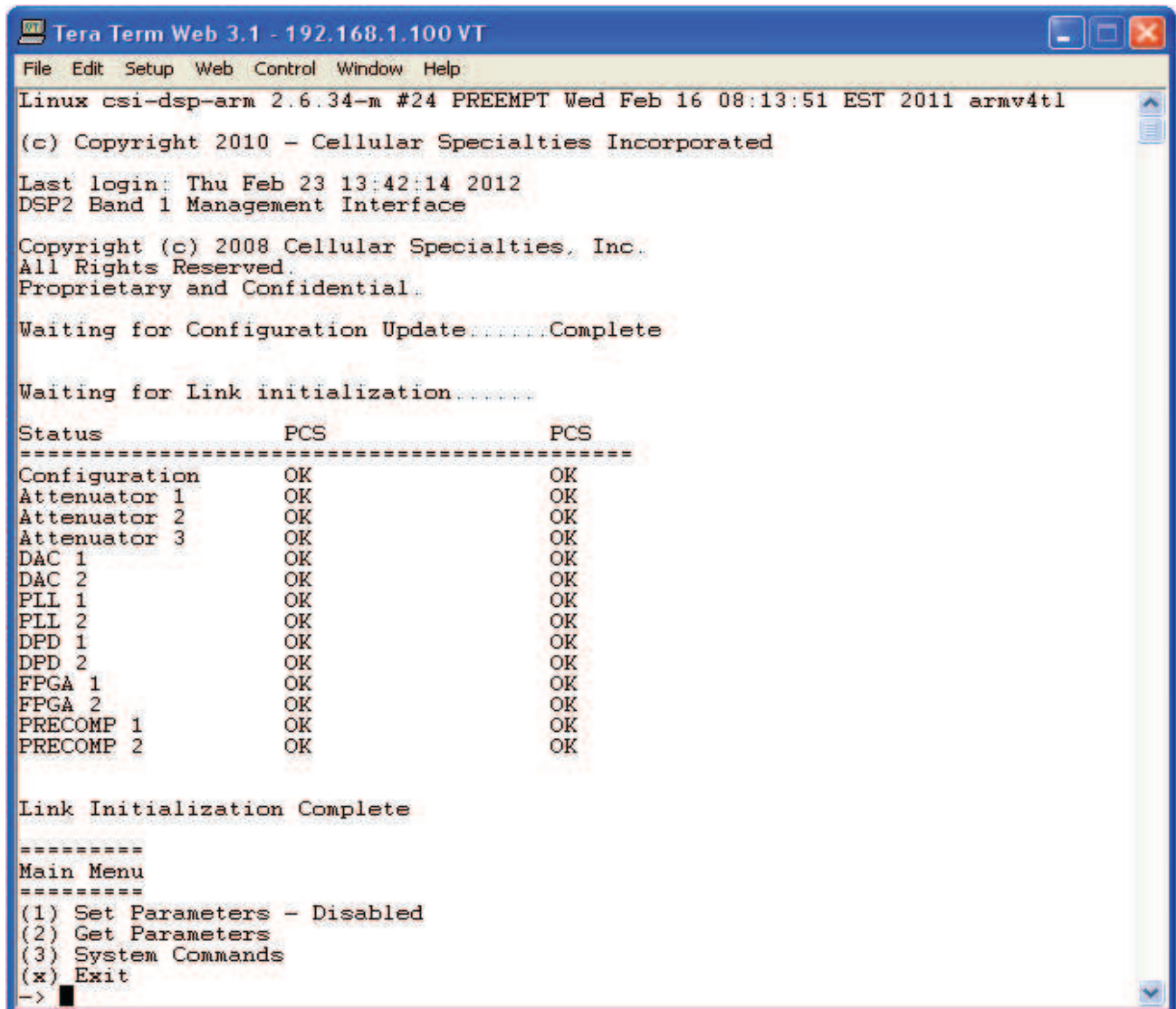
User Interface

Login

Once the unit has completed its boot up and link initialization phases it will display the login prompt. The username is "bandone" for the first two beacons and "bandtwo" for the second two beacons. The password is "csi1234".

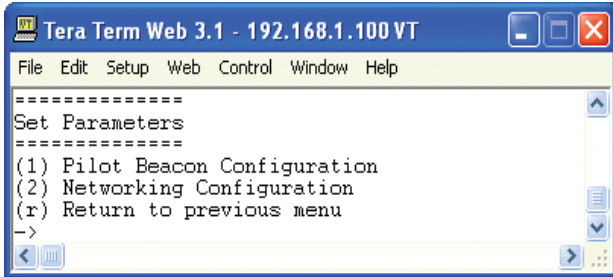
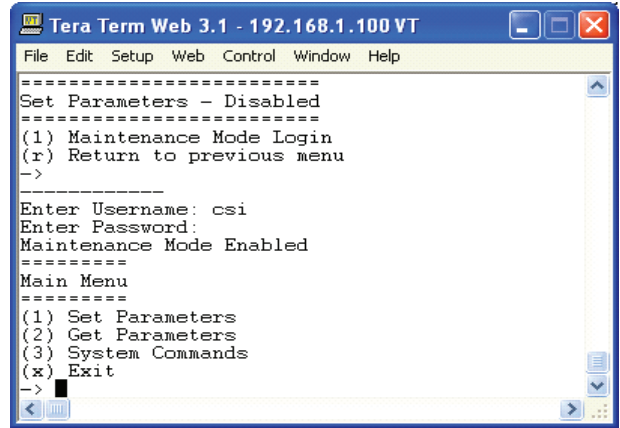
Main Menu

Upon successful login the unit displays the main menu.



```
Tera Term Web 3.1 - 192.168.1.100 VT
File Edit Setup Web Control Window Help
Linux csi-dsp-arm 2.6.34-m #24 PREEMPT Wed Feb 16 08:13:51 EST 2011 armv4tl
(c) Copyright 2010 - Cellular Specialties Incorporated
Last login: Thu Feb 23 13:42:14 2012
DSP2 Band 1 Management Interface
Copyright (c) 2008 Cellular Specialties, Inc.
All Rights Reserved.
Proprietary and Confidential.
Waiting for Configuration Update.....Complete
Waiting for Link initialization.....
Status          PCS          PCS
-----
Configuration   OK           OK
Attenuator 1    OK           OK
Attenuator 2    OK           OK
Attenuator 3    OK           OK
DAC 1           OK           OK
DAC 2           OK           OK
PLL 1           OK           OK
PLL 2           OK           OK
DPD 1           OK           OK
DPD 2           OK           OK
FPGA 1          OK           OK
FPGA 2          OK           OK
PRECOMP 1      OK           OK
PRECOMP 2      OK           OK
Link Initialization Complete
=====
Main Menu
=====
(1) Set Parameters - Disabled
(2) Get Parameters
(3) System Commands
(x) Exit
-> █
```

When "Set Parameters" is first selected the unit will ask for the maintenance mode login. (The default username for the maintenance mode is "csi" and the password is "csi1234".)

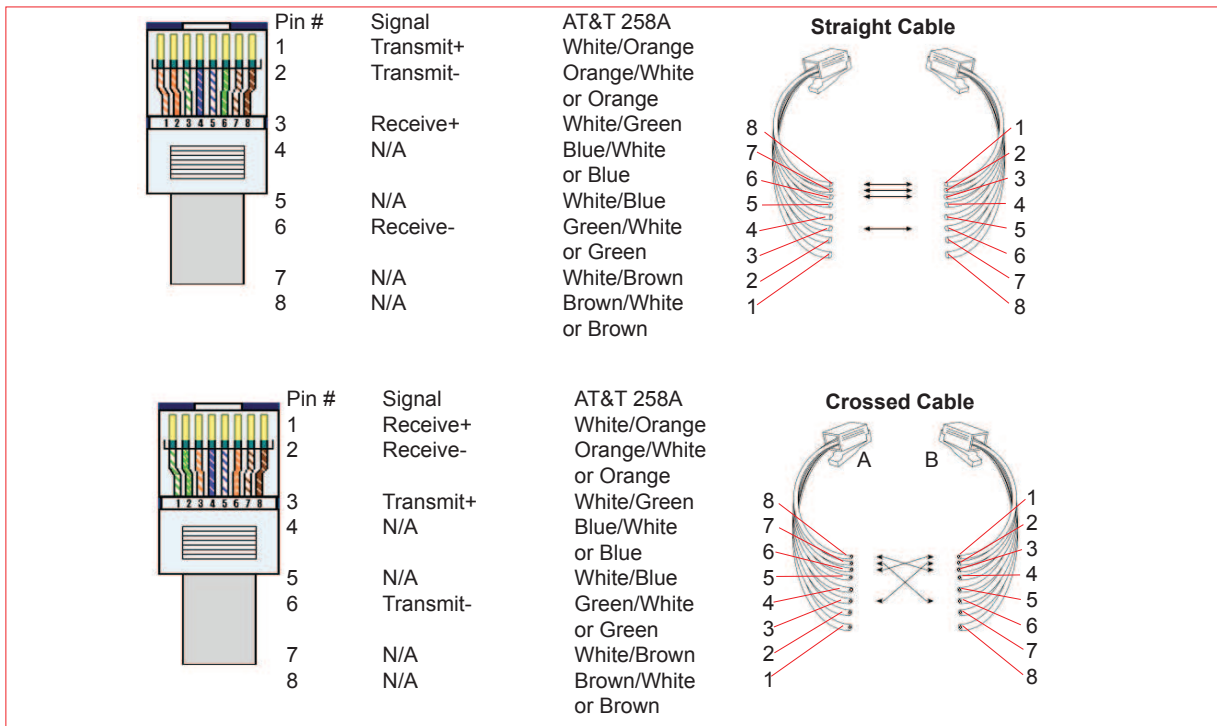
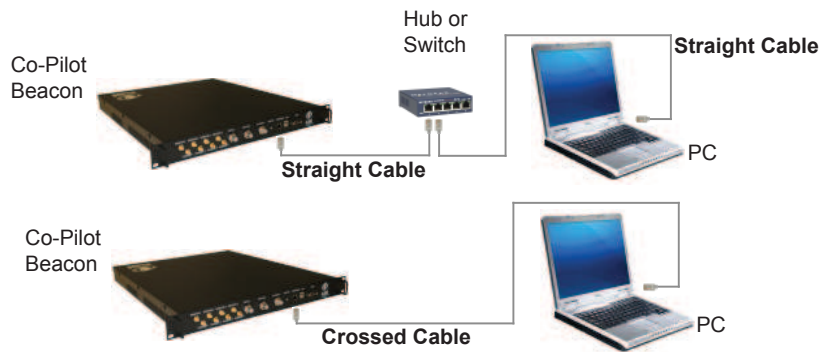


Set Parameters Menu

Once the maintenance mode login is performed successfully the main menu will be displayed again but without the "(Disabled)" qualifier on the "Set Parameters" choice.

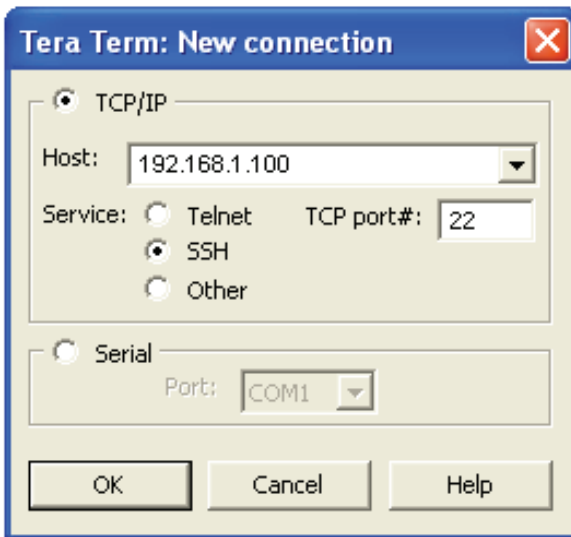
Telnet Session (Remote Access)

The diagram below shows the normal use of Crossed and Straight cables.

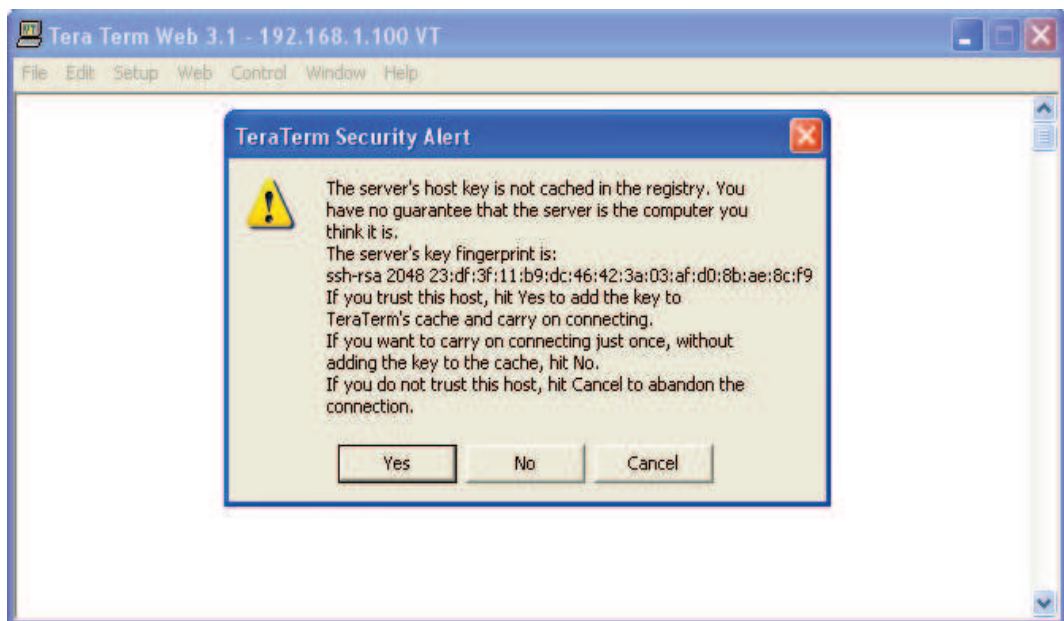


Remote access to the repeater may be gained through a LAN connection and a terminal emulation program for TCP/IP. As with the serial connection, many terminal emulation programs will work, if properly configured. In the following description, "TeraTerm" is used to establish the Telnet session. Also, it will be required that the network configuration of the computer and the repeater being controlled be set up with the same Sub Net and Sub Net Mask in order to establish a link. In other words, the IP addresses of both the computer used and the repeater must use the same group of IP address number sets. For example, the repeater ships with the default IP address of 192.168.1.100 and a Sub Net Mask of 255.255.255.0. In order to connect, the computer to be used for the link would normally need an IP address of something like 192.168.1.12 with a Sub Net Mask of 255.255.255.0, the same Sub Net Mask as the repeater. In this example note: the last digit of the IP address may be any number except 1,100 and 255. Configuring your PC is normally fairly straight forward but it does vary somewhat with the operating system involved. If you require assistance, contact your IT department and they will be able to set up your PC for you or you may review the Additional Tips Section at the end of the manual.

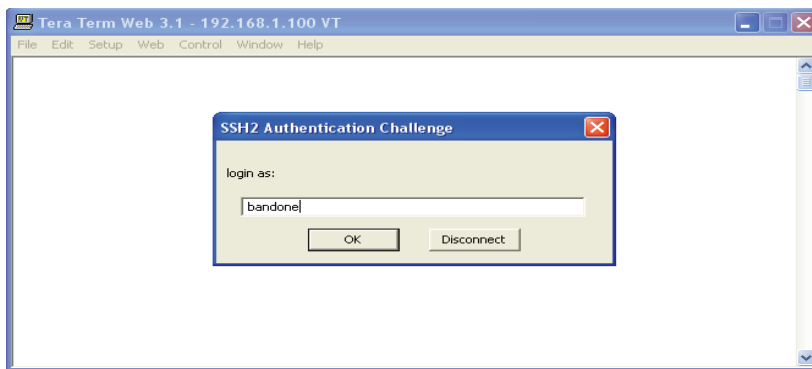
When the TeraTerm program is started, the following screen is displayed. Change the default host IP address to the IP address of the repeater to be controlled. In the case of a new install, the default address is 192.168.1.100 and has been assigned at the factory. Select the service Telnet. The TCP Port must be 23.



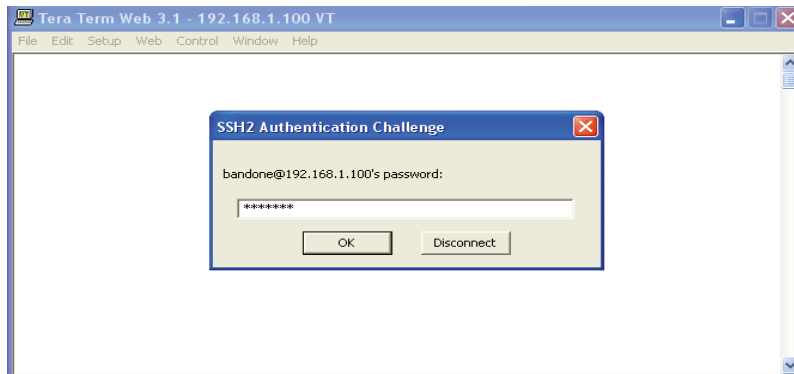
Pressing the "OK" button will display the security alert shown below.



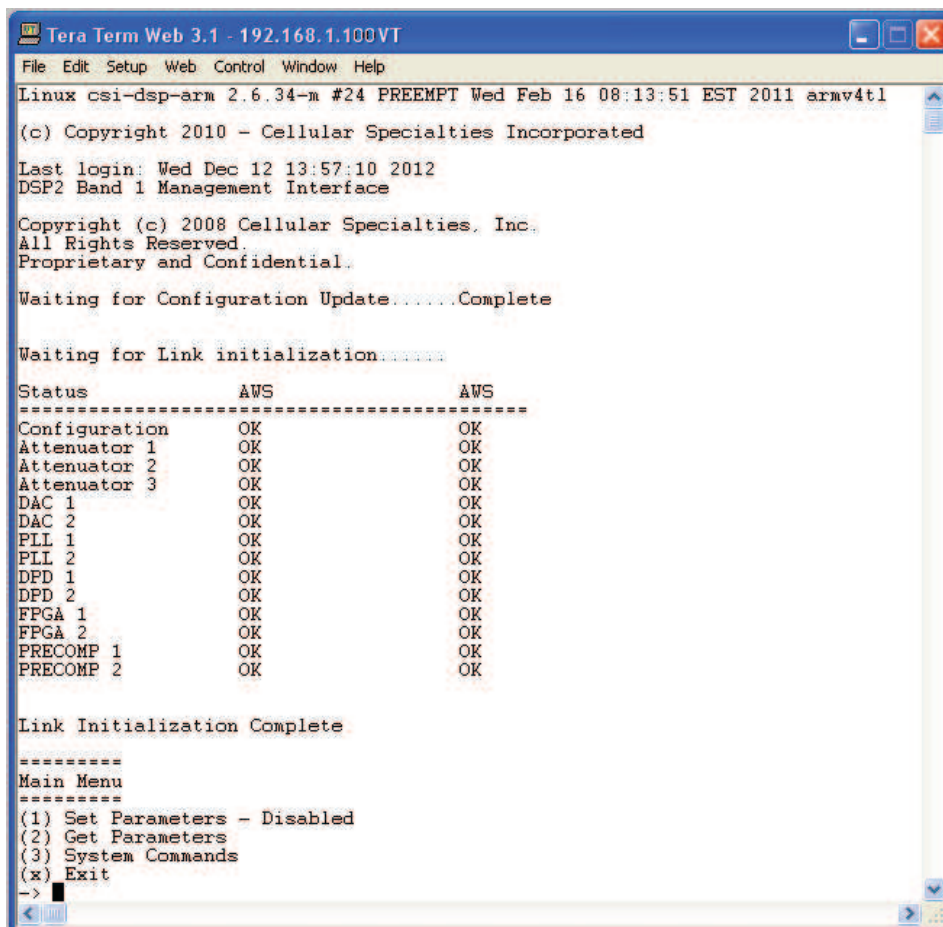
Click the yes button and the first SSH2 Authentication Challenge screen is displayed. The user then types the username in the space provided. In multi beacon units, each set of beacons are changed independently and requires an independent login. To make changes default user names are "bandone" for the first two beacons and "bandtwo" for the second two beacons respectively .

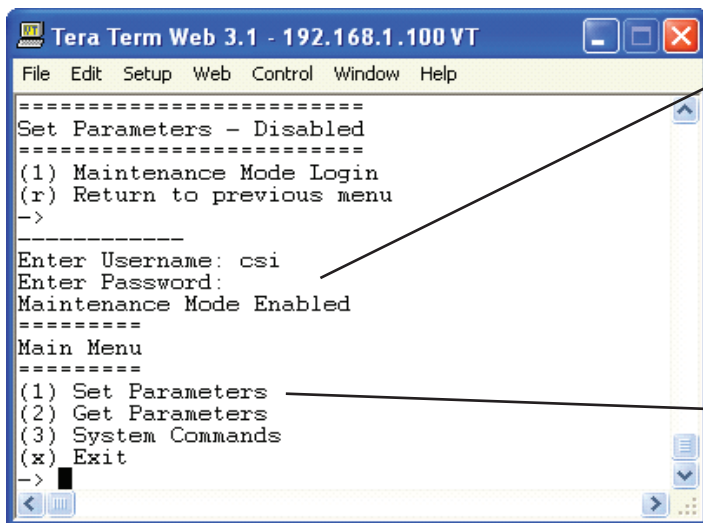


Press OK after entering the user name and the second SSH2 Authentication Challenge will be displayed.



In the field provided, type the user name for the beacon to be changed. The default password is “csi1234” for all beacons. After typing the password press OK and the main menu will be displayed as shown next.



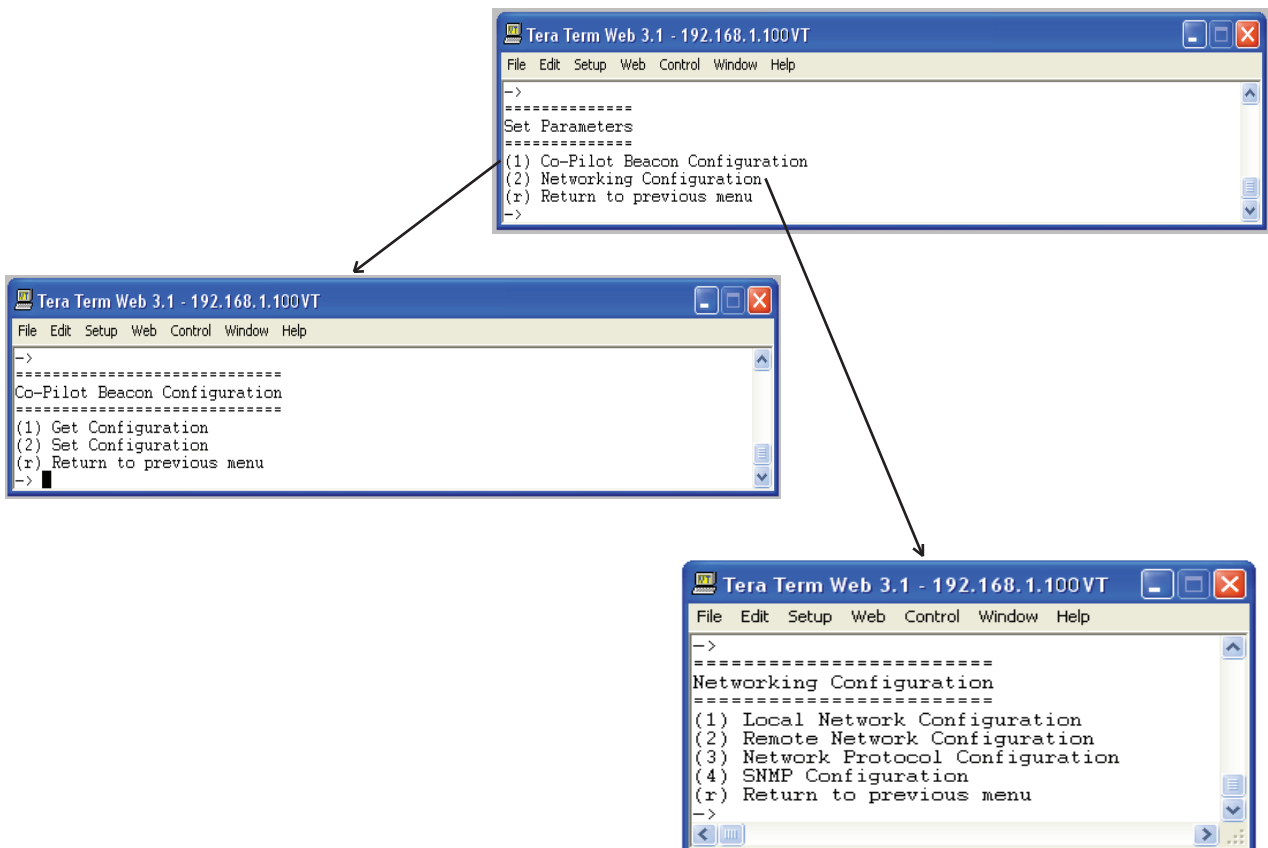


When "Set Parameters" is first selected the unit will ask for the maintenance mode login. (The default username for the maintenance mode is "csi" and the password is "csi1234".)

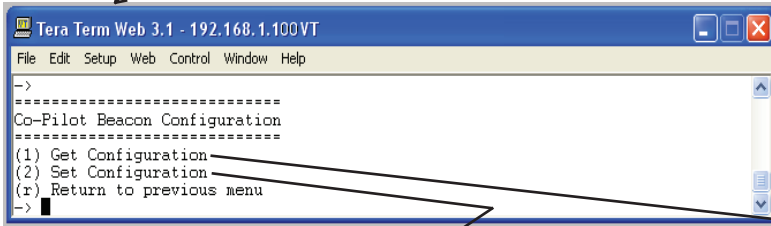
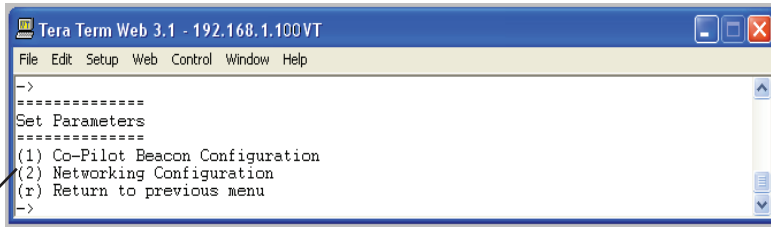
Once the maintenance mode login is performed successfully the main menu will be displayed again but without the "(Disabled)" qualifier on the "Set Parameters" choice.

Set Parameters Menu

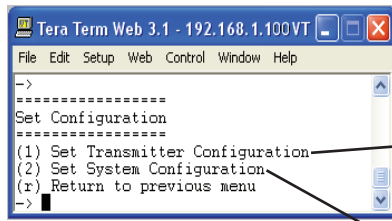
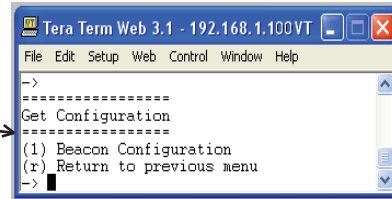
Selection of option 1 will display the Co-Pilot Configuration Menu. Option 2 displays the Networking Configuration Menu. These menus allow the user to choose set up options menus that are fairly self explanatory but are displayed in the following pages for clarification.



Co-Pilot Beacon Configuration

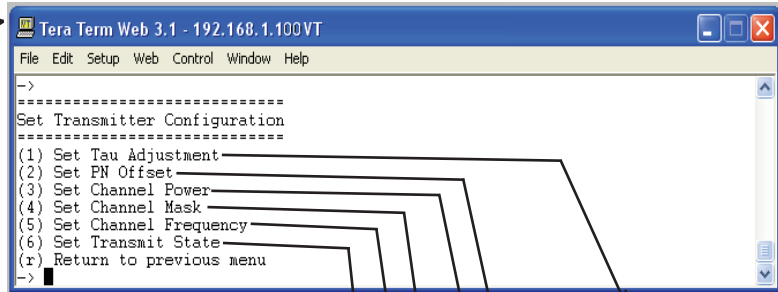


Selecting option 1 will display the current beacon configuration but does not allow the user to change any setting.



Selection of option 2 allows for the setting of Transmitter and System Configuration.

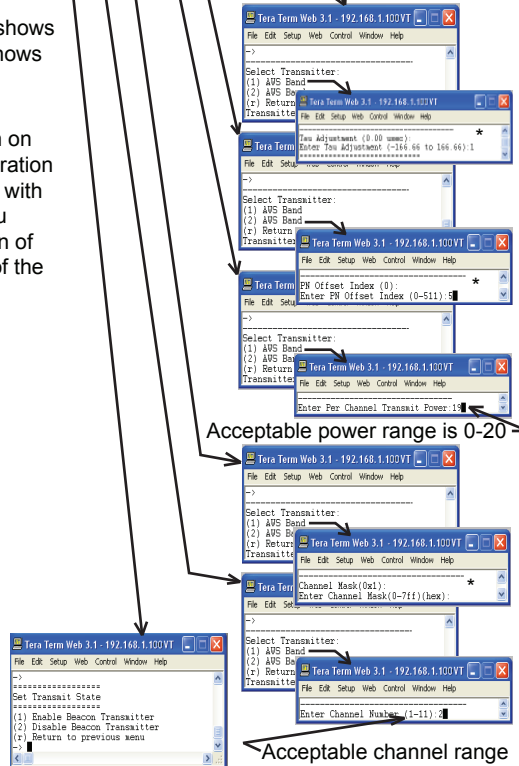
Transmitter Configuration



See next page for the Set System Configuration selections.

* Note Top line parenthesis shows current value. Bottom line shows range of acceptable values.

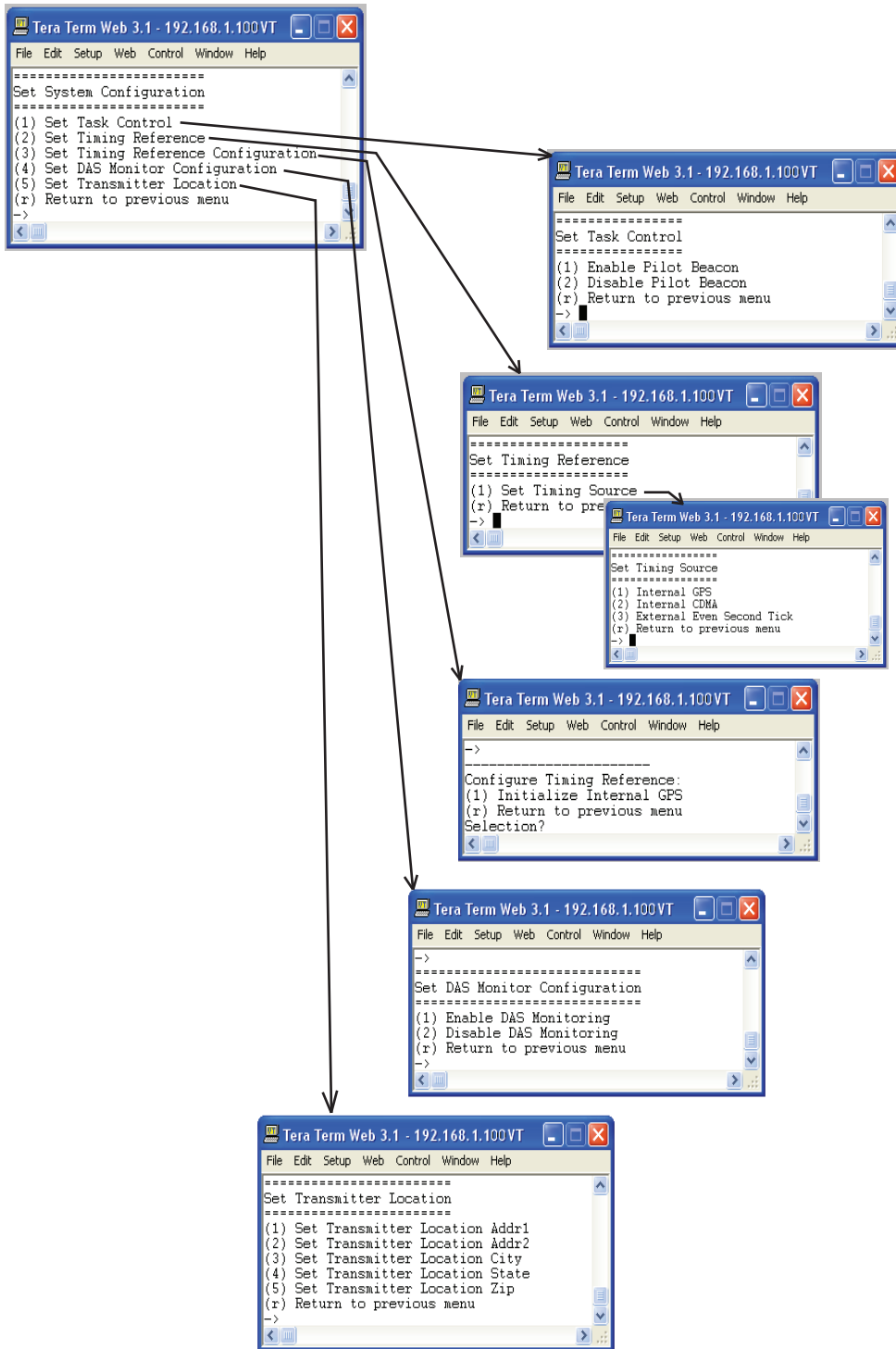
When selecting each option on the Set Transmitter Configuration menu the user is presented with the Select Transmitter menu first to allow for the selection of transmitter for this section of the unit.



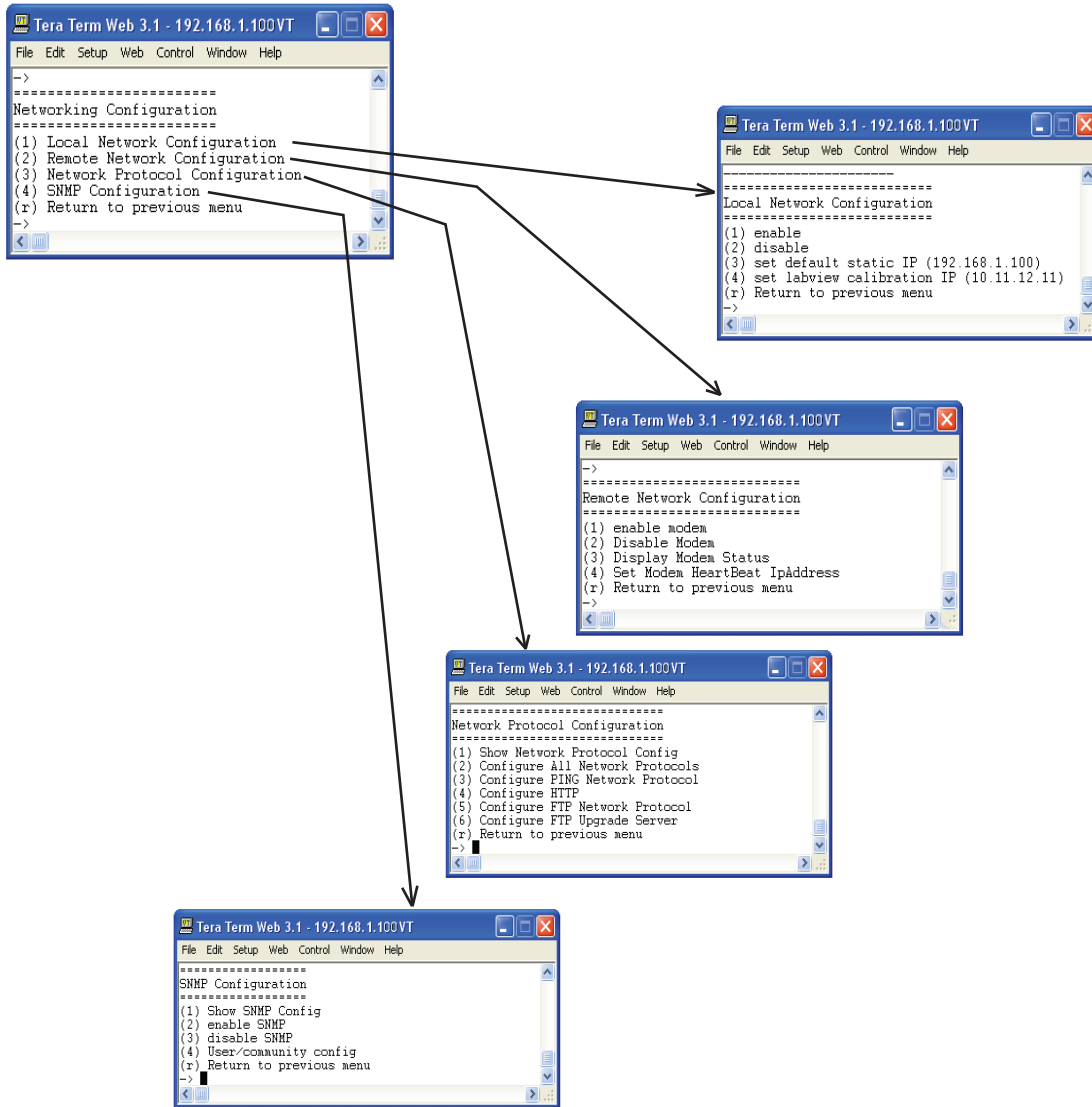
Acceptable power range is 0-20

Acceptable channel range

System Configuration

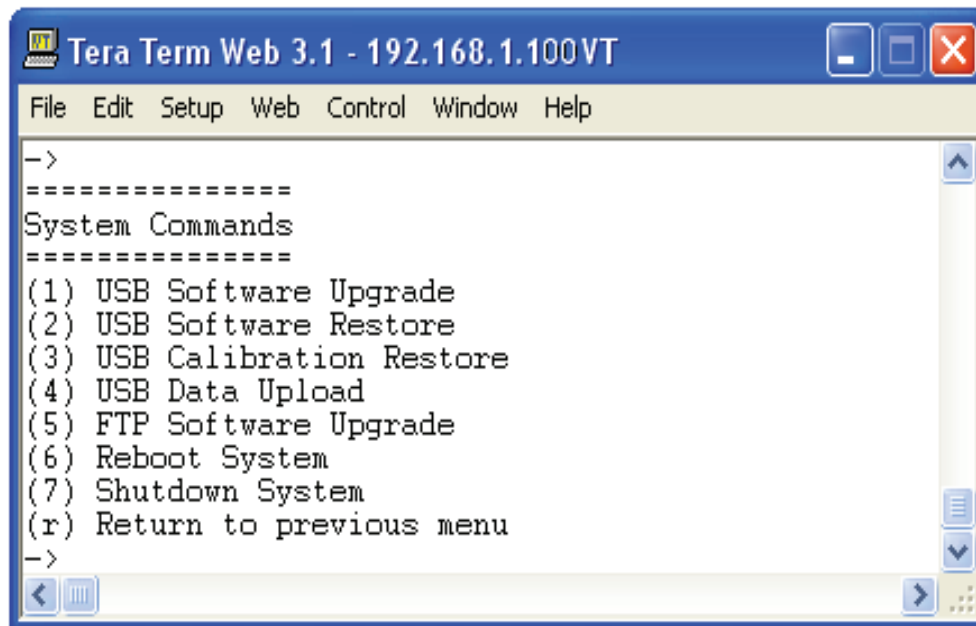


Networking Configuration



If the user is unclear about the network configuration that should be used for setup of the Co-Pilot Beacon, he or she should contact the Network Administrator for information with regard to the specific network settings.

System Commands



The System Commands Menu will allow the user to upgrade and restore the unit OS, restore factory calibration settings, upload new data files, upgrade FTP software, reboot and shutdown the system.

Key Features

Multiple Beacon Configuration

Each unit contains four independent beacons. These can be all in the same band or two of one band and two of another.

Detected RF Power Shutdown

The product contains an RF power detector for each transmitter that can be used to sense the power being transmitted by the DAS. Loss of the DAS requires that the beacon be shut down in order to provide some possibility for mobile devices to connect to the low level signal of the macro network.

The shutdown threshold is set by the user. When the detected power falls below the set threshold the transmit power of all beacons is shut down and an alarm is issued. When the power rises above the threshold the beacons are turned back on.

Timing Reference Source

A GPS derived timing reference is always required for the proper operation of the Co-co-pilot beacon. That timing reference can be provided by one of the following:

- An optional internal GPS receiver
- An optional internal CDMA timing receiver
- The CSI supplied external CDMA Timing Reference Receiver
- The CSI supplied external precision GPS Timing Reference (Spectrum Instruments TM-4)
- Any user-supplied GPS Receiver capable of providing a TTL compatible even second tick aligned to GPS (not UTC) time.

Control Parameter Details

Master Shutdown

The Master Shutdown shuts down the transmissions from all beacons in the product.

Timing Reference Selection

There are three alternatives for the timing reference source and all beacons in the product use the same reference.

- Internal GPS
- Internal CDMA
- External Even Second Sync

The choices that are available will depend on the product type as follows:

- MX- "External" only
- MG- "External" and "Internal GPS"
- MO- "External" and "Internal CDMA"

The default choice will also depend on the product type as follows:

- MX- "External"
- MG- "Internal GPS"
- MO- "Internal CDMA"

Selecting "Internal GPS" enables the use of the internal GPS receiver. An appropriate antenna with a clear view of the sky must be connected to the "Timing In" connector of the Co-pilot beacon. This choice is only available if the unit includes the optional GPS timing reference.

Selecting "Internal CDMA" enables the use of the internal CDMA receiver. Either an appropriate antenna, or a cable carrying a valid CDMA Base Station signal, must be connected to the "Timing In" connector of the Co-pilot beacon. This choice is only available if the unit includes the optional CDMA timing reference.

Selecting "External Even Second" enables the use of a TTL compatible even second pulse via the "EST In" connector of the Co-Co-pilot beacon. The rising edge of the pulse is used as the time reference and must be aligned with the start of the even second of GPS (not UTC) Time.

The even second tick provided by the selected Timing Reference will appear on the "EST Out" connector.

Channel Frequency Numbers

Each co-pilot beacon can transmit up to eleven simultaneous CDMA2000 signals. The carrier frequency for each signal is set by entering the desired CDMA channel number for that signal.

Thus, there are eleven Channel Number fields, one for each of the possible signals.

The CDMA channel number is a unit less integer value

The range is 1 to 799 and then 991 to 1023 for cell band, 1 to 1199 for PCS band, and 25 to 875 for AWS band. Duplicate channel numbers are not allowed.

The default values for a Cell Band beacon are:

Signal 1: CDMA Channel 1005
Signal 2: CDMA Channel 1
Signal 3: CDMA Channel 89
Signal 4: CDMA Channel 177
Signal 5: CDMA Channel 265
Signal 6: CDMA Channel 353
Signal 7: CDMA Channel 441
Signal 8: CDMA Channel 529
Signal 9: CDMA Channel 617
Signal 10: CDMA Channel 705
Signal 11: CDMA Channel 793

The default values for a PCS Band beacon are:

Signal 1: CDMA Channel 1
Signal 2: CDMA Channel 120
Signal 3: CDMA Channel 239
Signal 4: CDMA Channel 358
Signal 5: CDMA Channel 477
Signal 6: CDMA Channel 596
Signal 7: CDMA Channel 715
Signal 8: CDMA Channel 834
Signal 9: CDMA Channel 953
Signal 10: CDMA Channel 1072
Signal 11: CDMA Channel 1192

The default values for a AWS Band beacon are:

Signal 1: CDMA Channel 25
Signal 2: CDMA Channel 110
Signal 3: CDMA Channel 195
Signal 4: CDMA Channel 280
Signal 5: CDMA Channel 365
Signal 6: CDMA Channel 450
Signal 7: CDMA Channel 535
Signal 8: CDMA Channel 620
Signal 9: CDMA Channel 705
Signal 10: CDMA Channel 790
Signal 11: CDMA Channel 875

Channel to frequency formulas are shown below:

Cell Channels 1-799 - $.03 \times (\text{Ch\#} + 870) = (\text{Frequency})\text{MHz}$.

Cell Channels 991-1023 - $.03 \times (\text{Ch\#} - 1023) + 870 = (\text{Frequency})\text{MHz}$.

PCS Channels 1-1199 - $.05 \times (\text{Ch\#} + 1930) = (\text{Frequency})\text{MHz}$.

AWS Channels 25-875 - $.05 \times (\text{Ch\#} + 2110) = (\text{Frequency})\text{MHz}$.

Signal Transmit Enables

Each of the eleven signals for a given beacon can be individually turned on or off. There is one transmit enable field for each signal.

The default values for Cell Band beacons are:

Signal 1: Enabled
Signal 2: Enabled
Signal 3: Enabled
Signal 4: Enabled
Signal 5: Enabled
Signal 6: Enabled
Signal 7: Enabled
Signal 8: Disabled
Signal 9: Disabled
Signal 10: Disabled
Signal 11: Disabled

The default values for PCS Band beacons are:

Signal 1: Disabled
Signal 2: Disabled
Signal 3: Disabled
Signal 4: Disabled
Signal 5: Disabled
Signal 6: Disabled
Signal 7: Disabled
Signal 8: Disabled
Signal 9: Disabled
Signal 10: Disabled
Signal 11: Disabled

The default values for AWS Band beacons are:

Signal 1: Disabled
Signal 2: Disabled
Signal 3: Disabled
Signal 4: Disabled
Signal 5: Disabled
Signal 6: Disabled
Signal 7: Disabled
Signal 8: Disabled
Signal 9: Disabled
Signal 10: Disabled
Signal 11: Disabled

PN Offset

Each beacon has its own PN Offset. The PN Offset is a unitless integer value with a range of 0 to 511. The default value is zero.

Tau (Delay Correction)

There is a single Tau value for each beacon in a given product unit. Tau is a real value in units of microseconds with a range of -166.7 to +166.7 μ sec and one decimal place of precision. Internally the value will be rounded to the nearest 1/40th of a CDMA chip.

Co-pilot beacon Per Channel Transmit Power

This setting controls the CDMA Channel Power output by a given Co-pilot beacon for each carrier. All enabled carriers are transmitted at the same power level. The total transmit power will be the sum of the power of all enable carriers. The user must set this power level such that the total transmit power does not exceed the specified maximum transmit power for the Co-pilot beacon.

The Output Power is specified in dBm with a range of 0.0 to 20.0 and a resolution of 0.5.

Composite Transmit Power

Composite output power is a display only field. The value is calculated from the Per Channel Tx Power and the number of channels that are enabled.

Manual Shutdown

Manual Shutdown allows the user to shut down transmission from the given beacon

Auto Shutdown Enable

The detected power shutdown feature can be enabled or disabled.

Auto Shutdown Threshold

The shutdown threshold is entered in units of dBm.

The allowable range is -26 to +4 dBm

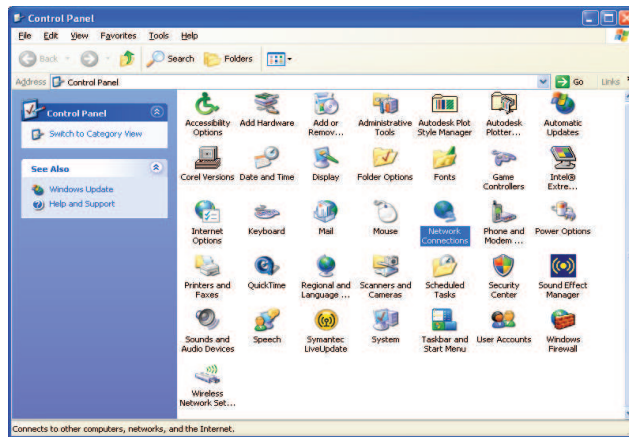
Detected Power

Detected power is a display only field that displays the current reading of the power detector for the given beacon. The measured power is displayed in units of dBm and has a range of -30 to +10.

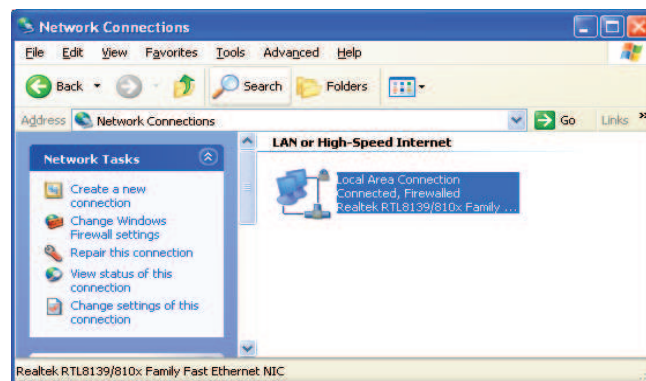
Additional Tips

Instructions to change TCP/IP settings on your Windows computer.

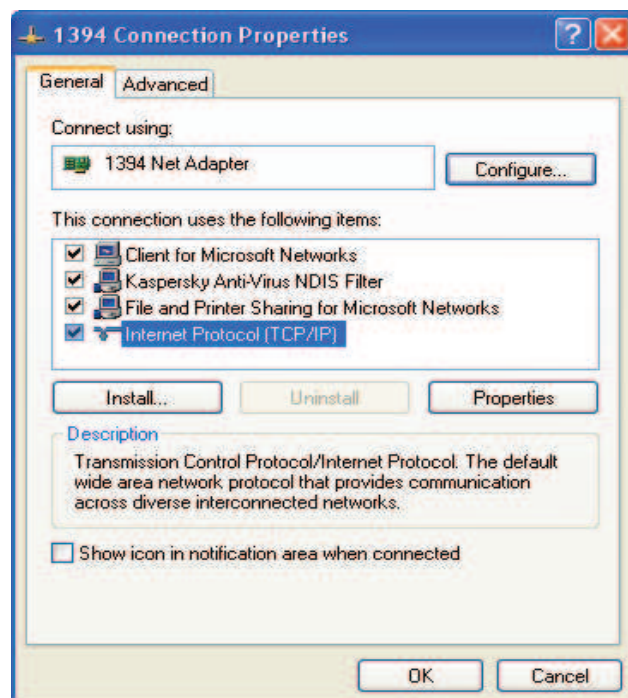
Click in the Network Connections Icon in the Control Panel. See below.



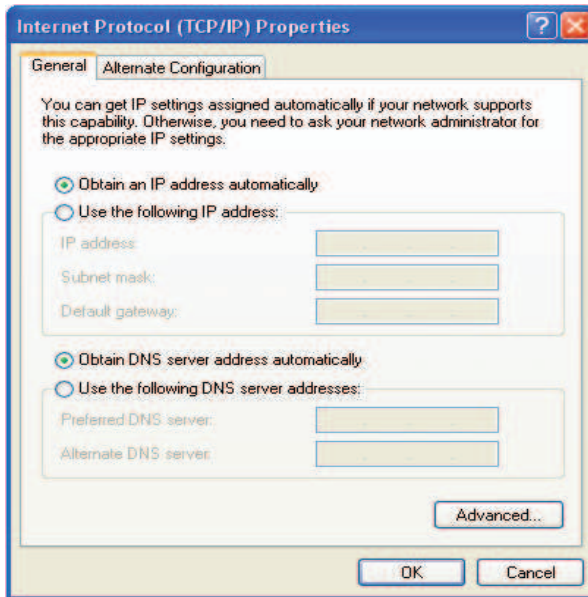
Right click on Local Area Connection - and select "Properties".



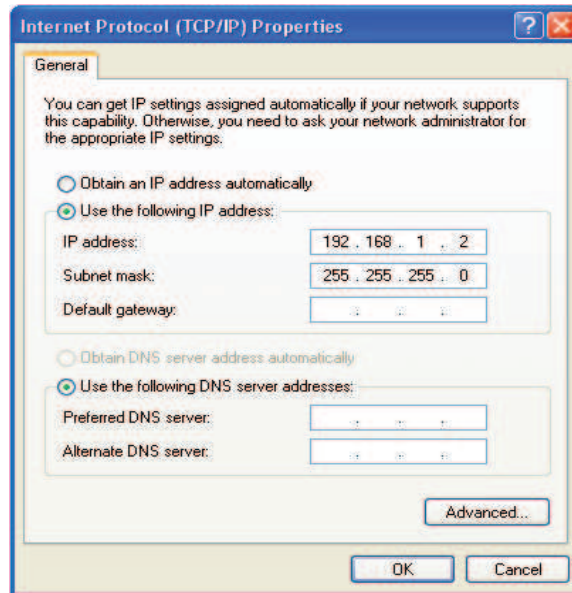
Scroll down to "Internet Protocol (TCP/IP)" and click on the "Properties" button.



If you are set up to use DHCP, the window shown below will be displayed.



Select "Use the following IP address:" and enter "192.168.1.2." The subnet mask should automatically populate to "255.255.255.0".



Nothing else will need to be chosen or entered. Click "OK", then "OK again and retry connection.

A crossover Ethernet cable (supplied) must be used for Web Interface access. As a reminder, you must verify the Ethernet port on your laptop is powered. If your laptop is on battery power, the Ethernet port may be inactive by default. If this is the case simply plug in the laptop to a 110vac source or change the power settings to enable the Ethernet port when the laptop is using battery power.

One Year Limited Warranty

Seller warrants that its products are transferred rightfully and with good title; that its products are free from any lawful security interest or other lien or encumbrance unknown to Buyer; and that for a period of one year from the date of installation or fifteen months from the date of original shipment, whichever period expires first, such products will be free from defects in material and workmanship which arise under proper and normal use and service. Buyer's exclusive remedy hereunder is limited to Seller's correction (either at its plant or at such other place as may be agreed upon between Seller and Buyer) of such defects by repair or replacement at no cost to Buyer. Transportation costs in connection with the return of products to Seller's plant or designated facility shall be paid by Buyer. The provisions of this warranty shall be applicable with respect to any product which Seller replaces pursuant to it. SELLER MAKES NO WARRANTY, EXPRESS OR IMPLIED, OTHER THAN AS SPECIFICALLY STATED ABOVE. EXPRESSLY EXCLUDED ARE THE IMPLIED WARRANTIES OF MERCHANTABILITY AND FITNESS FOR PURPOSE. THE FOREGOING SHALL CONSTITUTE ALL OF SELLER'S LIABILITY (EXCEPT AS TO PATENT INFRINGEMENT) WITH RESPECT TO THE PRODUCTS. IN NO EVENT SHALL SELLER BE LIABLE FOR SPECIAL, CONSEQUENTIAL OR INCIDENTAL DAMAGES, INSTALLATION COSTS, LOST REVENUE OR PROFITS, OR ANY OTHER COSTS OF ANY NATURE AS A RESULT OF THE USE OF PRODUCTS MANUFACTURED BY THE SELLER, WHETHER USED IN ACCORDANCE WITH INSTRUCTIONS OR NOT. UNDER NO CIRCUMSTANCES SHALL SELLER'S LIABILITY TO BUYER EXCEED THE ACTUAL SALES PRICE OF THE PRODUCTS PROVIDED HEREUNDER. No representative is authorized to assume for Seller any other liability in connection with the products.

Industry Certifications/Registration Numbers

NVRCSI-CPBRW-CP, NVRCSI-CPBRW-AW

UL - Power Supply: UL60950-1

Index

A

AC Current 6
AC Power Frequency 6
AC Power Specifications 6
Acronyms and Definitions 5
AC Voltage 6
Additional Tips 37
Administration Tasks Collapse/Expand Icon 20
Administration Tasks Panel 15
Alarms Tab 17
Alarm Status Icon 19
Application 4
Auto Shutdown Enable 36
Auto Shutdown Threshold 36

B

Box Weight 6

C

Channel Frequency Numbers 35
Collapse/Expand Icon 19
Composite Transmit Power 36
Control Parameter Details 34
Co-Pilot Beacon Configuration 30
Co-pilot beacon Per Channel Transmit Power 36
Copy Logs Icon 18

D

Depth 6
Detected Power 36
Detected RF Power Shutdown 34

E

EIA232 Pin Specifications 22
Element Management System 13
Elements Collapse/Expand Icon 21
Environmental Requirements 6
Explosive Atmospheres 4

F

Functional Overview: 6

G

Grounding 4

H

Height 6

I

Important Installation Notes 11
Industry Certifications/Registration Numbers 39
Install Software Icon 18

K

Key Features 34

L

Lightning Danger 4
Limited Warranty 39
Local Communication Interface Ports 11
Login 25

M

Main Menu 25
Manual Shutdown 36
Master Shutdown 34
Mechanical Drawing 7
Mechanical Specifications 6
Monitoring & Alarms 22
Multiple Beacon Configuration 34

N

Networking Configuration 32
null modem adapter 23

O

Optional Accessories 11

P

PN Offset 36
Powering Up the Unit 11
Power supply cable connectors 11
Product Introduction 5
Product Registration Information 4

R

Reboot Icon 18
Relative Humidity 6

S

serial cable 23
Set Parameters Menu 26, 29
Setup Element Configuration Tab 17
Signal Transmit Enables 35
SNMP Configuration Tab 16
Supplemental Configuration Tab 16
Surface Coating 6
System Commands 33
System Configuration 31
System Info Tab 13
System Set-Up Considerations 7

T

Tau (Delay Correction) 36
TCP/IP settings 37
Telnet Session 26
Telnet Session (Remote Access) 26
Temperature Range 6
terminal emulation programs 24
Text Menu Interface 23
Thermal Management 6
Timing Reference Selection 34
Timing Reference Source 34
Transmitter Configuration 30

U

UL - Power Supply 39
USB Interface 22
User Interface 25

W

Warranty 39
Web based GUI Session 12, 23
Width 6

Notes

Notes

Notes



960-1146-002 rev 006



670 North Commercial Street
Manchester, NH 03101

Toll Free: 1.877.844.4274
Phone: 603.626.6677
Fax: 603.626.6042

www.cellularspecialties.com