



PS71090 2W Public Safety Signal Booster

Users Guide

PRODUCT MANUAL



DISCLAIMER

All information and statements contained herein are accurate to the best of Westell Technologies knowledge. Westell makes no warranty with respect there to, including without limitation any results that may be obtained from the products described herein or the infringement by such products of any property rights of any persons. Use or application of such information or statements is at the users' sole risk, without any liability on the part of Westell. Nothing herein shall be construed as license or recommendation for use, which infringes upon any propriety rights of any person. Product material and specifications are subject to change without notice. Westell standard terms of sale and the specific terms of any particular sale apply.

Table of Contents

PREFACE	7
Purpose.....	7
Scope.....	7
Audience.....	7
Document Organization	8
References.....	9
Document Conventions.....	9
Safety Notices	10
Technical Support.....	10
Acronyms and Abbreviations.....	10
Copyright and Trademark Acknowledgements	10
1 GENERAL INFORMATION	11
1.1 Document Purpose and Intended Users	11
1.2 Application	11
1.2.1 Product Registration Information.....	11
1.3 Safety Guidelines.....	12
1.3.1 Important Safety Information.....	13
1.4 FCC Part 90 Signal Boosters	13
1.5 FCC Contact Information.....	14
2 PRODUCT OVERVIEW	15
2.1 Product Information.....	15
2.2 Product Features	15
2.3 Included Accessories	16
2.4 Optional Accessories	16

3 PRODUCT SPECIFICATION	17
3.1 RF Specifications	17
3.2 Power Specification	17
3.3 Mechanical Specification	18
3.4 Environmental Specification	18
3.5 GUI Items.....	19
3.6 Alarm Status	20
3.7 Alarm Relay.....	21
4 PRODUCT APPEARANCE	22
4.1 External Configuration	22
5 INSTALLATION GUIDELINES	23
5.1 Important Installation Guidelines	23
5.2 Donor Antenna Installation Guidelines	24
5.3 Indoor Antenna Installation Guidelines.....	24
5.4 Mounting the Signal Booster	25
5.5 Verifying the Physical System Setup.....	26
5.6 Controlling the Signal Booster.....	26
5.7 Connecting to the Alarm Relay Panel.....	27
5.8 Connecting the Power Cable.....	29
5.9 Connecting the Battery Back-up Cable	31
6 SYSTEM OPERATION	32
6.1 Operating the Program.....	32
6.2 Status.....	34
6.3 Control	38

7.0 INSTALLING SOFTWARE INSTALLATION	43
7.1 Upgrading the Firmware	46
7.2 IP Change	48
7.2.1 IP Change Window	48
7.2.2 Static IP Setting	49
7.2.3 DHCP IP Setting	49
APPENDIX A IMPORTANT PRODUCT INFORMATION.....	50
A.1 Registration Number.....	50
A.2 UL.....	50
APPENDIX B ACRONYMS AND ABBREVIATIONS.....	51

TABLE OF FIGURES

Figure 1-1: Product Registration.....	11
Figure 4-1: External Product Configuration.....	22
Figure 5-1: Repeater Mounting Bracket Mounted on Repeater Rear.....	25
Figure 5-3A: Ethernet Cable.....	26
Figure 5-3BA: Ethernet Connectors.....	26
Figure 5-4: Stripped Cable Conductors.....	27
Figure 5-5: Alarm Relay 9 Position D-Sub Connector.....	27
Figure 5-6: Alarm Relay Cable Connected to Repeater.....	28
Figure 5-7: Remove the Power Connector Cap.....	29
Figure 5-8: Connector Keys.....	29
Figure 5-9: Power Cable Connected to Repeater.....	30
Figure 5-10: Power Cable Connected to Repeater.....	30
Figure 5-11: Battery Cable Connected to Repeater.....	30

Figure 6-1: Status Mode..... 34

Figure 6-2: Control Mode Page..... 38

Figure 6-3: Native to Destination Directory..... 43

Figure 6-4: Click Next to Begin Installation..... 44

Figure 6-5: Installation Progress Window..... 44

Figure 6-6: Installation Complete..... 45

Figure 7-1: Firmware Upgrade Progress Window showing File Open tab 46

Figure 7-2: Firmware Version Check..... 46

Figure 7-3: Firmware Update Status..... 47

Figure 7-3: IP Settings..... 48

Figure 7-4: IP Change Window..... 48

Figure 7-5: Static IP Address..... 49

Figure 7-6: DHCP IP Address..... 49

LIST OF TABLES

Table P-1: Document Conventions..... 9

Table 2-1: Included Accessories..... 16

Table 2-2: Optional Accessories16

Table 3-1: RF Specifications..... 17

Table 3-2: Power Specifications..... 17

Table 3-3: Mechanical Specifications..... 18

Table 3-4: Environmental Specifications..... 18

Table 3-5: GUI Items..... 19

Table 3-6: Alarm Status..... 20

Table 3-7: Alarm Relay..... 21

Table 5-1: Alarm Relay Connections..... 28

Table B-1: Acronyms and Abbreviations..... 51

Preface

This Preface includes the following:

- Purpose
- Scope
- Audience
- Document Organization
- References
- Document Conventions
- Safety Notices
- Technical Support
- Acronyms and Abbreviations
- Copyright and Trademark Acknowledgements

Purpose

This manual contains information and procedures for the operation of the Westell PS71090 Public Safety Signal Booster.

Changes that occur after the publishing date may be incorporated by a complete manual revision or as additions.

Scope

Reference this manual when there is a need to add enhanced signal capability to a new or existing system, to monitor a system, make maintenance adjustments, or address alarms.

Audience

This manual is intended for installers and users who are familiar with similar types of equipment.

Document Organization

This manual includes the following chapters:

- **Chapter 1: General Information** – Outlines the document purpose and intended users, application, product registration, safety guidelines, disclaimer and FCC Part 90, FCC Warning Labels.
- **Chapter 2: Product Overview** – Provides product information, describes product features and lists accessories.
- **Chapter 3: Product Specification** – Provides tables containing RF, power, mechanical and environmental specifications. Also provides information about GUI items, alarm status and alarm relay.
- **Chapter 4: Product Appearance** – Provides physical specifications, photographs and information about the external and internal Signal Booster configuration.
- **Chapter 5: Installation Guidelines** – Lists guidelines for installing the Signal Booster and antennas.
- **Chapter 6: Software Installation** – Outlines the steps required to install the software.
- **Chapter 7: System Operation** – Describes product operation, including how to open the communication port and describes the functions in the Status and Control pages.
- **Appendix A: Important Product Information** – Provides the product registration number and internal power supply information.
- **Appendix B: Acronyms and Abbreviations** – A table of acronyms and abbreviations and definitions for each.

References

- FCC Part 90

Document Conventions

Table P-1 lists the conventions used throughout this document.

Table P-1: Document Conventions

Convention	Description
DANGER!	Description of an imminent hazard that, if not avoided, may result in severe personal injury or death. Before you work on equipment, be aware of the hazards involved with electrical and RF circuitry and be familiar with standard practices for preventing accidents.
WARNING!	Description of an imminent hazard that, if not avoided, may result in personal injury or serious equipment damage.
CAUTION	Description of a conditions or practice that could cause damage to equipment or property. Communicates information that is crucial to preventing loss of data or damage to hardware or software, and actions that could result in equipment failure.
IMPORTANT	Additional important information that the user must be aware of, but is not related to a hazard.
NOTE	Additional information that is beneficial for the user to know, but is not related to a hazard.
Bold	Bold text indicates an action or provides emphasis.
Click	Instructs the user to press the primary (typically left) mouse button while the pointer is over the specified location.
Right-click	Instructs the user to press the secondary (typically right) mouse button while the pointer is over the specified location.
Double-click	Instructs the user to press the primary (typically left) mouse button twice, rapidly, while the pointer is over the specified location.
Select	Instructs the user to perform a selection on the screen by clicking an active object.
Enter	Instructs the user to type text using the keyboard.
>	Indicates a level in a menu. For example, Start>Programs prompts the user to click on Start, then locate and click Programs under the Start menu.

Safety Notices

This general safety information applies to both operating and service personnel. Specific warnings and cautions are located in other parts of this manual where they apply and may not appear in this summary. Failure to comply with these precautions or specific warnings elsewhere in the manual violates the safety standards of design, manufacture, and intended use of equipment.

Westell assumes no liability for the customer's or user's failure to comply with these requirements:

- **Explosive atmospheres** - To avoid explosion or fire, do not operate this product in the presence of flammable gases or fumes.
- **Lightning danger** - Do not install or make adjustments to this unit during an electrical storm.

WARNING!

Changes and Modifications not expressly approved by Westell can void your authority to operate this equipment under Federal Communications Commission's rules.

Technical Support


If you suspect a malfunction with this product or have a technical question, call your dealer or the Westell Support Line at: (603) 626-6677, Toll Free (USA) 1-877-844-4274, press option 2, and then option 1. Westell Support can also be reached via email at IBWsupport@westell.com.

Acronyms and Abbreviations

Refer to Appendix B for definitions of the acronyms and abbreviations used in this manual.

Copyright and Trademark Acknowledgements

The following products are referred to in this manual:

-  **WESTELL** is a registered trademark of Westell Technologies, Inc.

1 General Information

1.1 Document Purpose and Intended Users

The purpose of this document is to provide a step-by-step procedure to help experienced technicians or engineers install and commission an in-building Passive Wireless Distributed Antenna System (DAS) using Westell's PS71090 2W Public Safety Signal Booster. Follow the instructions in this guide to minimize risks associated with modifying a live system and preclude service interruptions. This document assumes the technician or engineer understands the basic principles and functionality involved with an RF Signal Booster and in-building wireless systems. This guide has been written to address the practical concerns of the installer.

1.2 Application

Use this guide whenever there is a need to add enhanced signal capability to an existing system or when a Signal Booster is included in a new installation.

1.2.1 Product Registration Information

The serial number is located on the label on the panel near the power connectors. Record this number in Figure 1-1. Retain this manual, along with proof of purchase, to serve as a permanent record of your purchase.

MODEL NUMBER	SERIAL NUMBER	PURCHASE DATE
<input type="text"/>	<input type="text"/>	<input type="text"/>
POINT OF SALE COMPANY		
<input type="text"/>		

Figure 1-1: Product Registration

1.3 Safety Guidelines

The general safety information in this guideline applies to both operations and service personnel. Specific warnings and cautions are located in the applicable manual sections, but may not appear in this summary. Failure to comply with these precautions or specific warnings elsewhere in the manual violates safety standards of design, manufacture, and intended use of equipment. Westell assumes no liability for the customer's failure to comply with these requirements:

Grounding: This Signal Booster is designed to operate at 110VAC @ 1.02A maximum current and must always be operated with the ground wire properly connected.

Explosive atmospheres: To avoid explosion or fire, do not operate this product in the presence of flammable gases or fumes.

Lightning danger: Do not install or adjust this unit during an electrical storm.

No user-serviceable parts are inside the unit. Hazardous voltages are present when the cover is removed. Opening the chassis will void your warranty. If you suspect a malfunction with this product, call your dealer or Westell's technical support line at 1.877.844.4274.

CAUTION

Turn the Signal Booster power off when connecting or disconnecting cables.

1.3.1 Important Safety Information

Antennas used for the purpose of radiating signals indoors are limited to a maximum gain of 3 dBi. Each antenna must be positioned to observe minimum separation requirements from all users and bystanders.

The following guidelines must be used when considering separation distances:

- Indoor antennas must be placed so that under normal conditions, personnel cannot come within 20 cm (~8 in) of any inside antenna. Adhering to this minimum separation will ensure that the employee or bystander cannot exceed RF exposures beyond the maximum permissible limit as defined by FCC Regulations section 1.1310 Limits for general population/uncontrolled exposure.
- Outdoor antenna must be positioned so that under normal conditions, personnel cannot approach closer than 120 cm (~4 ft.). A directional antenna having a maximum gain of 3.75 dBi is used, and precautions should be taken to prevent personnel from routinely passing through the main radiation beam at a distance closer than specified.

1.4 FCC Part 90 Signal Boosters

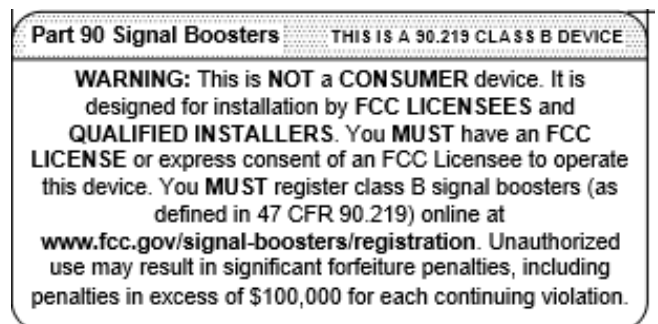
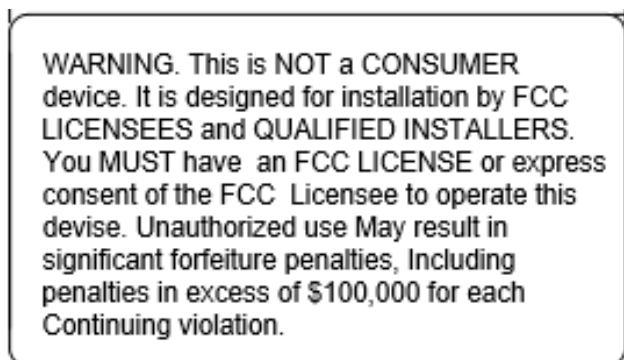
WARNING!

THIS IS A 90.219 CLASS B DEVICE

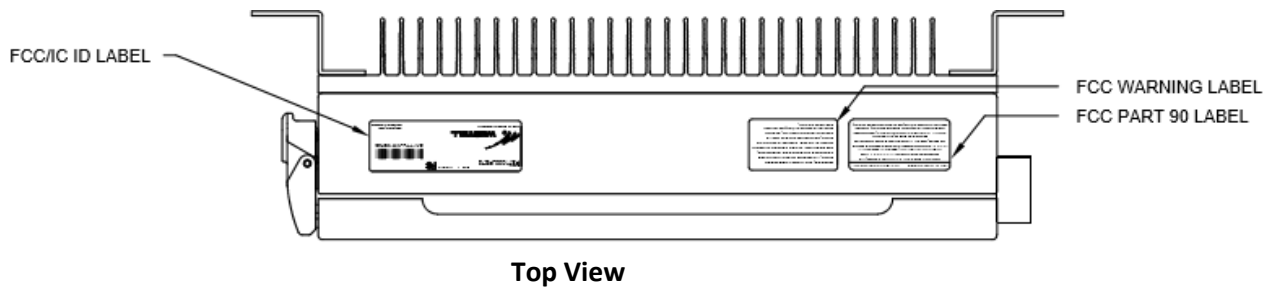
This is not a consumer device. It is designed for installation by FCC licensees and qualified installers. You must have an FCC license or express consent of an FCC Licensee to operate this device. You must register class B signal boosters (as defined in 47 CFR 90.219) online at www.fcc.gov/signal-boosters/registration. Unauthorized use may result in significant forfeiture penalties, including penalties in excess of \$100,000 for each continuing violation.

FCC Warning Labels

The following labels will appear on the PS71090 Signal Booster in accordance with the FCC:



FCC Label Placement on the PS71090:



1.5 FCC Contact Information

Federal Communications Commission
445 12th Street SW
Washington, DC 20554

Phone: 1-888-225-5322

TTY: 1-888-835-5322

Fax: 1-866-418-0232

2 Product Overview

2.1 Product Information

The PS71090 Signal Booster was developed for use in enclosed structures where signals from local public safety towers to operate mobile units is poor or unavailable. Adequate signal strength must be available outside the structure as a prerequisite to achieving in-building coverage. The device is connected to an external antenna, normally located on a roof, and to one or more internal antennas placed strategically throughout the area where wireless service is desired.

The external antenna is typically directional, such as a Yagi or Panel antenna. Internal antennas are typically omnidirectional, although various other types may be used, depending on the coverage application. The Signal Booster amplifies both the uplink (mobile to base) and downlink (base to mobile) signals, thus facilitating communications to and from the intended wireless infrastructure.

With a maximum total of 90 dB nominal gain on both the uplink and downlink, gain can be adjusted over a range from 60 dB to 90 dB in 1 dB steps.

The Signal Booster is controlled using a computer connected to the RJ45 Female Network Connector labeled 'GUI'. There are also LED indicators to indicate alarm status, OSC and power. Refer to Figure 4-1.

2.2 Product Features

- Easy installation
- Light and small
- Control using a Windows-based Graphical User Interface (GUI) and accessed by connecting a laptop or desktop computer to the 8P8C/RJ45 Female Network Connector labeled 'GUI'
- User gain control
- Automatic level control
- Automatic shutdown function
- Oscillation protection
- Overdrive protection
- Under/over voltage protection
- Fault protection
- Alarm notification
- SNMP
- Persistent status and error information
- Battery Back-up Input

2.3 Included Accessories

Table 2-1 contains the items that are shipped with the PS71090 Public Safety Signal Booster.

Table 2-1: Included Accessories

Quantity	Description
1	AC Power Cable, 5 feet 10 inches
1	DC Power Cable, 5 feet 10 inches
1	Ethernet cable, 6 feet 1 inch
1	Alarm Relay Serial Cable, 4 feet 9 inches
1	USB Drive containing the User Manual and Software
5	Mounting Screws
5	Drywall Anchors

2.4 Optional Accessories

A complete line of accessories is available from Westell. Check with your Westell distributor for any additional items needed. Some products that are suitable for most in-building needs are listed in Table 2-2.

Table 2-2: Optional Accessories

Directional couplers	
6 dB	ClearLink-DC6/340-2.7K/N
10 dB	Clearlink-DC10/340-2.7K/N
15 dB	Clearlink-DC15/340-2.7K/N
20 dB	Clearlink-DC20/340-2.7K/N
30 dB	Clearlink-DC30/340-2.7K/N
Power dividers	
2:1	Clearlink-SPD2/340-2.7K/N
3:1	Clearlink-SPD3/340-2.7K/N
4:1	Clearlink-SPD4/340-2.7K/N

3 Product Specification

3.1 RF Specifications

Table 3-1: RF Specifications

Parameter		Specification	Note
Frequency Range	UL	788~805 MHz 806~809 MHz Sub-Band1 806~816 MHz Sub-Band2 806~824 MHz Sub-Band3	Each band, 700 & 800, are independently Controlled via the GUI
	DL	758~775 MHz 851~854 MHz Sub-Band1 851~861 MHz Sub-Band2 851~869 MHz Sub-Band3	
Linear Output Power	UL / DL	+33dBm	Shared Across Bands
Gain	UL / DL	90dB (±1.0dB)	
Gain Adjustment Range	UL / DL	30dB±1dB	1dB step
AGC Range	UL / DL	25dB (±1dB)	
Pass Band Ripple	UL / DL	±1.5dB Typ. (Peak-To-Peak 3dB)	
3rd Order Intercept Point	UL / DL	+42.5dBm	
Input VSWR	UL / DL	< 2:1	
Maximum Input No damage Power	UL / DL	+10dBm	
Propagation Delay	UL / DL	4µs Max.	
Noise Figure	UL	5dB Typ. 6.5dB Max.	
Input / Output Impedance	UL / DL	50 Ohms	

3.2 Power Specification

Table 3-2: Power Specifications

Parameter	Specification	Note
Main Power Input Voltage	110 VAC	Internal AC DC Power Supply

Battery Input Voltage	24 VDC to 30 VDC	External Battery Power Supply
Power Connector	IEC320	AC/DC
Power Consumption	<112W Max.	<4 Amps Max.

3.3 Mechanical Specification

Table 3-3: Mechanical Specifications

Parameter	Specification	Note
Size	17.7 x 14.1 x 4.7 in	L x H x D
Connectors	Link/Service Antenna Ports	4.3-10 type (female)
	AC Power In	AC cord
	DC(Battery) Power In	DC cord
	Frame Ground	Two-Lug ground Ports
	RJ-45 Ethernet-1 (10/100 Base-T)	GUI Interface
	RJ-45 Ethernet-2 (10/100 Base-T)	SNMP Interface
	9P D-SUB, female	Alarm Relay Interface
Mounting Type	Wall-Mount with 4 holes	2 holes in each side
Enclosure Lock	Key Lock	Two-Key Lock
Heat Dissipation	Natural Convection	
Finish	Red color Paint	

3.4 Environmental Specification

Table 3-4: Environmental Specifications

Parameter	Specification	Note
Operating Temperature	-30°C ~ +50°C (ambient)	-22F ~ +122F
Storage Temperature	-40°C ~ +60°C (ambient)	-40° F to +140° F
Operating Humidity	5% ~ 95%	
Environmental	IP-65, NEMA 4 Compliance	

3.5 GUI Items

Table 3-5: GUI Items

Parameter	Specification	Note
UL/DL Output Readings	11dBm to 36dBm	Reads and displays the UL/DL output power
Alarm Readout Displays	PLL LD(Lock Detector), Isolation, UL/DL shutdown, DC Fail, Relay Status, UL/DL VSWR, Manual Amp	Displays alarm status
UL/DL Shutdown Setting	29dBm to 36dBm	Use to set the peak power (shutdown level)
UL/DL Gain Setting	0dB to 30dB	Used to set the UL/DL system gain.
System Location Display	PS71090 PS-SMR700/800 Company, Address, City, State, Contact	Displays the Signal Booster name and information.
Control Send	All Control Page Settings	Used to save settings in the Control page.
Isolation	Settable to 0db -or- 15dB.	
VSWR	Adjustable from 1-30	
Quit	None	Closes the GUI page.

Refer to **Section 6 System Operation** for more information about the GUI.

3.6 Alarm Status

Table 3-6 Alarm Status

Signal Booster Unit LED			Condition/Troubleshooting
POWER	ISO	ALARM	
x	x	x	Power Supply is Out Of Order (inside Signal Booster)
Blinking GREEN	Blinking RED	Blinking RED	during isolation checking status
Solid GREEN	Off RED	Off RED	Normal condition at Power Up
Solid GREEN	Blinking RED	Off RED	Insufficient distance (Isolation) exists between the DL and UL Antenna. You should turn off power and re-install the DL and UL antenna for right isolation distance. (ALARM 1 , ALARM 2)
Solid GREEN	Off RED	Solid RED	This condition is Shut-Down Alarm. Received signal from cell tower is too strong (more than AGC range). Relocate DL Antenna to different location to reduce received signal (ALARM 2)
Solid GREEN	Off RED	Blinking RED	This condition is PLL Lock Detected Fail Alarm. (ALARM 1 , ALARM 2)
Blinking GREEN	Off RED	Off RED	AC failure (ALARM 1)
Solid GREEN	Off RED	Solid RED	DL VSWR Alarm (ALARM 3)
Solid GREEN	Off RED	Solid RED	UL VSWR Alarm (ALARM 3)
GREEN	Off RED	Solid RED	Manual Amp Alarm (ALARM 2)
Off RED	Off RED	Off RED	Power Failure (ALARM 1) Batt fail (Low , High), DC fail

- **ALARM 1 : System component failure, and/or loss of power – AC/DC (Pin 1,2,3)**
- **ALARM 2 : Active RF emitting device failure / PA failure (Pin 4,5,6)**

● **ALARM 3 : Antenna failure – Donor and Server VSWR Alarm (Pin7,8,9)**

3.7 Alarm Relay

Table 3-7 Alarm Relay

Shutdown Signal	Relay Status	Note
Normally Open	NO (pin 2) + CC (pin 3)	PIN 1 NC, PIN 2 NO, PIN 3 CC
Normally Closed	NC (pin 1) + CC (pin 3)	PIN 4 NC, PIN 5 NO, PIN 6 CC PIN 7 NC, PIN 8 NO, PIN 9 CC

NOTE

Either method in Table 3-7 would trigger the following alarms: Antenna Malfunction, PA Failure and Power Failure.

4 Product Appearance

4.1 External Configuration

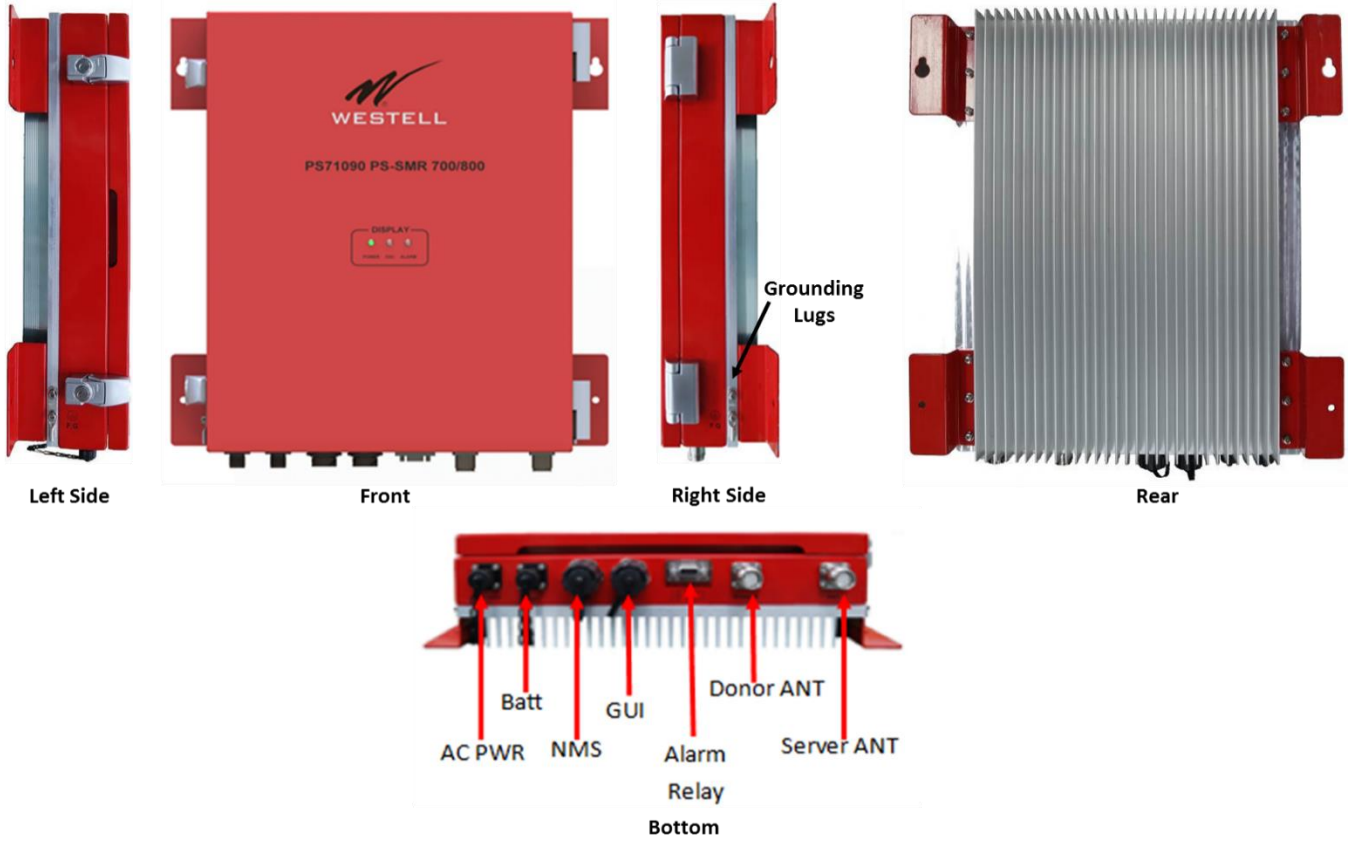


Figure 4-1: External Product Configuration

5 Installation Guidelines

5.1 Important Installation Guidelines

- The PS71090 Signal Booster is designed for indoor use only.
- The PS71090 Signal Booster must be installed in a vertical orientation (i.e. Connectors on the bottom of the unit).
- Inadequate isolation between the outside and inside antennas may cause regenerative feedback in the system.
 - This feedback can cause the amplifier to emit a continuous signal at maximum amplitude, and, in some cases, interfere with normal operation of the donor site. Careful consideration of the layout and placement of the system is imperative to minimize this possibility and to minimize the amount of signal leaking from the building.
- Do not disassemble the Signal Booster.

DANGER!

- Refer to the 1.3 Safety Guidelines section for proper antenna selection and installation. To avoid serious injury, death and/or damage to the Signal Booster, do not install donor or server antennas near overhead power lines or high power components. Allow enough distance so that falling antennas would not come in contact with those components.
- Electric shock may occur if the Signal Booster is installed in close proximity to water.

WARNING!

- Amplifier or handset damage may occur if a handset is connected directly to the Signal Booster or to the coax that leads to the Signal Booster.
- The PS71090 Signal Booster must be connected to ground for protection.
- We recommend that installers do not wear jewelry or metal accessories when installing this Signal Booster.
- Do not place cables or tools that may damage the Signal Booster in close proximity to it.
- Check the installation site for hazardous conditions such as water-covered floors or badly worn or damaged cables prior to installation.
- Lifespan and performance of the Signal Booster may be reduced if the unit is operating outside its nominal temperature range.

CAUTION

- **Close proximity to the donor or server antennas with the Signal Booster in operation may expose users or installers to RF fields that exceed FCC limits for human exposure.**
- **Turn power to the Signal Booster off when connecting or disconnecting cables.**

5.2 Donor Antenna Installation Guidelines

- Accurately determine the azimuth to the donor site. Obtain the donor site information and approval from the service provider/carrier.
- Ensure that the radiation path to the donor site is unobstructed.
- Mount the donor antenna at or toward the edge of the roof, in the direction of the donor site. Avoid having the RF signal from the donor pass above the location(s) of the service antennas. Normally, the service antennas are installed behind and below the donor antenna, as viewed from above. This approach helps avoid interference and feedback to and from the service antennas.
- Normally, mounting the donor antenna higher will allow a less obstructed path to the donor site. However, in high traffic metro areas, avoid mounting the donor antenna higher than necessary, as the quality of the donor signal may become less stable and it is more likely to encounter adjacent channel interference.
- When possible, shield the rear of a donor antenna by locating it so that any HVAC units and/or penthouse structures are behind the antenna, relative to the donor cell site location.

5.3 Indoor Antenna Installation Guidelines

- Use omnidirectional antennas (see section 2.4. Optional Accessories) indoors and locate them centrally with respect to the intended coverage area to minimize signal leakage to the outside. Only use directional antennas indoors in special cases when higher gain and directionality would be helpful and RF exposure limits will not be exceeded.
- To avoid Signal Booster uplink overload and gain limiting, mount the indoor antennas away from areas where mobile subscribers frequently use their phones, such as desks or dispatch areas.
- To determine the quantity and locations of indoor antennas, measure Received Signal Strength Indication (RSSI) using DM Tool software to determine areas of weak signals. These are the approximate areas where indoor antennas may be needed.
- Be aware that the signal from an indoor antenna, in most cases, can be expected to penetrate approximately two standard sheet rock walls to reach users. If the signal must travel through more than two walls, or if the walls are made of materials other than sheet rock, it may be necessary to split the available signal and add more antennas.

5.4 Mounting the Signal Booster

Follow the instructions in this section to mount the Signal Booster on a wall.

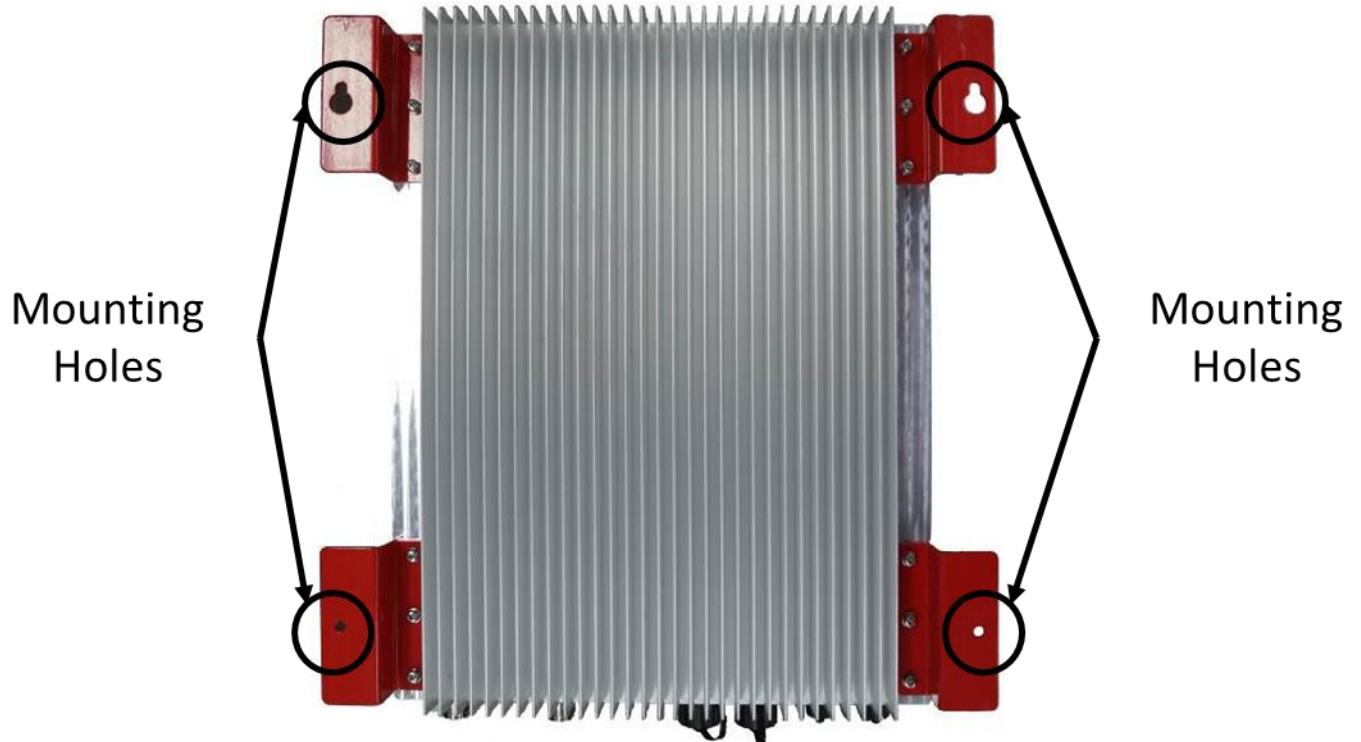


Figure 5-1: Signal Booster Mounting

1. Using the PS71090 as a template, mark the four (4) locations for the wall anchoring system screws.
2. Move the PS71090 unit and drill the mounting holes at the marks in the wall.
Install a wall anchor in each of the four (4) drilled holes.
3. Install the top two (2) screws into the anchors, leaving enough room to slide the screws into the oblong holes of the top of the unit's mounting positions.
4. Once the Unit is hung on the top two (2) screws finish fastening the top screws.
5. Install the bottom two (2) screws into the anchors, fastening the Unit to the wall.

5.5 Verifying the Physical System Setup

- Check all cables for shorts and opens. Verify that there are no cables with loose or poor connections. RF leakage could cause oscillation to occur under some conditions.
- If the rooftop antenna (donor antenna) is directional, check it for proper alignment along the calculated compass heading. Typically, the directional antenna would be aimed at the same site that your handset uses, but that may not always be the case.
- If cables and alignment are acceptable, and a problem persists, use a spectrum analyzer to examine the signal environment in which the unit is operating. The existence of strong adjacent channel signals within the frequency band(s) can cause the AGC to reduce the amplifier's gain or cause alarms. In some cases, additional filtering or attenuation may be required to reject these unwanted signals. In some instances, the donor antenna can be reoriented horizontally to place the interference source in an antenna pattern null.

5.6 Controlling the Signal Booster

Control and monitoring the Signal Booster requires that a properly configured computer with Westell PS71090 control software installed is connected via an Ethernet cable, such as the one shown in Figure 5-3. Connect the Ethernet cable from the Network Interface port of a computer to the GUI port on the bottom end panel of the Signal Booster.



Figure 5-3A: Ethernet Cable



Figure 5-3B: Ethernet Connectors

5.7 Connecting to the Alarm Relay Panel

Use the provided Alarm Relay Serial Cable to connect the PS71090 Public Safety Signal Booster to the alarm relay panel. If the provided cable is not long enough for your system, you will need to build one.

1. Strip the outer serial cable insulation back to expose the inner conductors, Figure 5-4. Only the red, black and brown conductors will be used. You may cut the remaining conductors back to end of the outer insulation to keep them out of the way.
2. Strip back the insulation on the ends of each conductor.

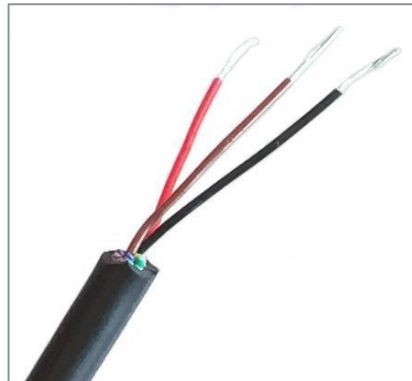


Figure 5-4: Stripped Cable Conductors

3. Remove the protective cover on the Alarm Relay 9 position D-Sub connector.



Figure 5-5: Alarm Relay 9 Position D-Sub Connector

4. Connect the 9 position D-Sub connector at one end of the serial cable to the Alarm Relay connector on the PS71090, Figure 5-6. Be sure to fasten the connector screws securely.



Figure 5-6: Alarm Relay Cable Connected to Signal Booster

5. Connect the stripped end of the serial cable to the alarm relay panel. Refer to Table 5-1 for connection information.

Table 5-1: Alarm Relay Connections

Pin Number	Contact Type	Conductor Color
1	NC	Black
2	NO	Brown
3	CC	Red

5.8 Connecting the Power Cable

Use the provided AC Power Cable to connect the PS71090 Public Safety Signal Booster to an AC power source.

1. Remove the cap from the AC 110V power connector on the Signal Booster, Figure 5-7.

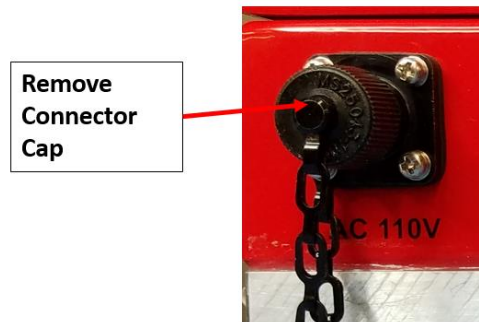


Figure 5-7: Remove the Power Connector Cap

2. Connect the power cable to the AC 110V power connector on the Signal Booster, Figure 5-9.

NOTE

The Signal Booster connector and the cable connector are keyed as shown in Figure 5-8.

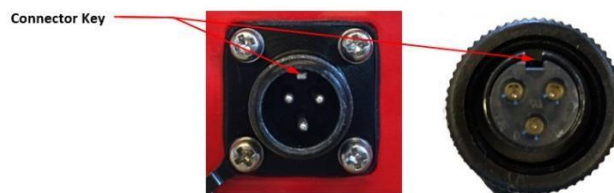


Figure 5-8: Connector Keys

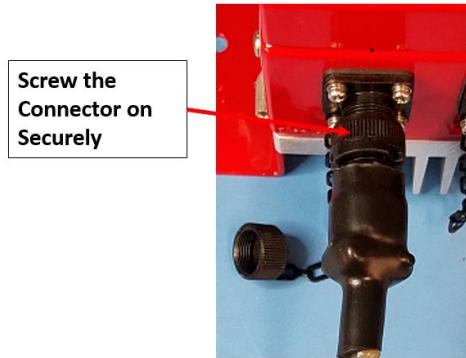


Figure 5-9: Power Cable Connected to Signal Booster

3. Screw the connector on securely.
4. When the Signal Booster is properly set up and ready to have power applied, plug the other end into the 110VAC outlet.



Figure 5-10: Power Cable Connected to Signal Booster

5.9 Connecting the Battery Back-up Cable

Use the provided DC Power Cable to connect the PS71090 Public Safety Signal Booster to a Battery Back-up power source.



Figure 5-11: Battery Cable Connected to Signal Booster

6 System Operation

6.1 Operating the Program

Access the PS71090 Public Safety Signal Booster using the provided **PS71090 PS-SMR 700/800** software through a LAN connection. **The Signal Booster ships with the IP address 192.168.1.150.**

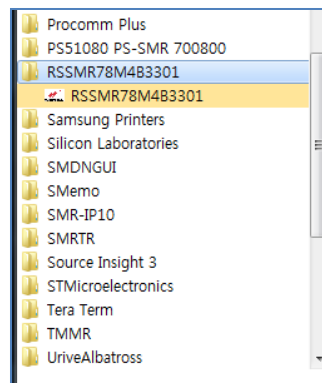
To connect directly to the Signal Booster from a laptop or PC with a crossover CAT-5E cable or over a LAN, change the TCP/IP settings on your computer to enable a connection to a host that has a static IP.

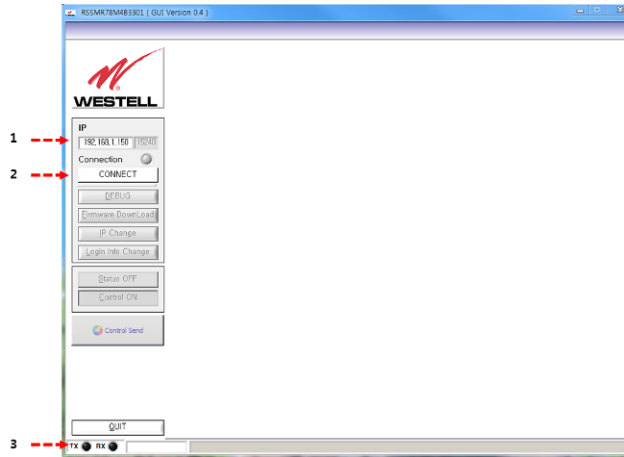
1. Select **Use the following IP Address** and enter the IP address **192.168.1.x**, where 'x' is any number from 2 to 254, inclusive, other than 150.
2. Ensure that the subnet mask is set to 255.255.255.0.

NOTE

Refer questions about these settings to your IT department.

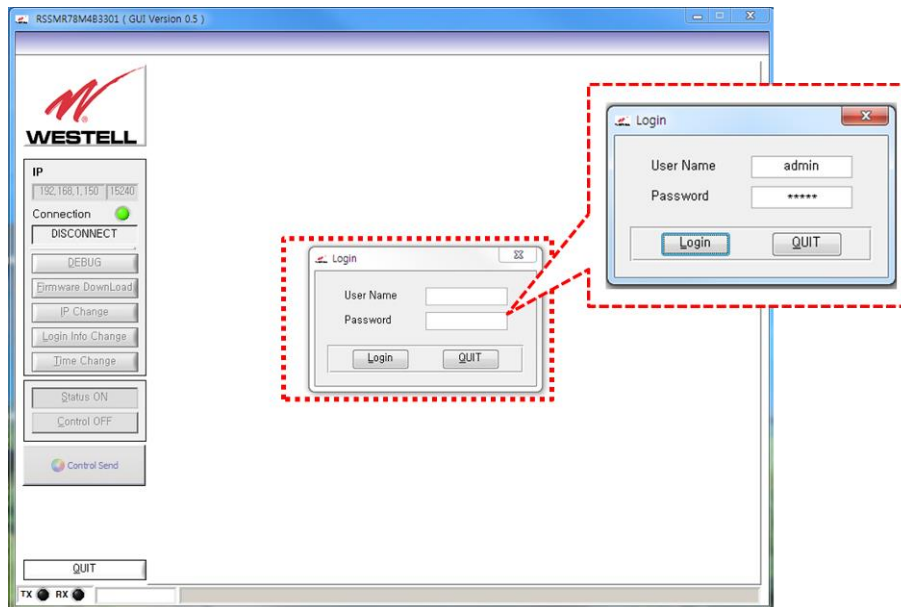
- 1) Navigate to the RSSMR78M4B3301.exe software file and double-click to run it. The Status page, displays.





Item	Description
1	IP Address Field (editable when Connect button is displayed)
2	Connect/Disconnect toggle button
3	TX/RX LED indicates the state of communication with the Signal Booster and GUI

- 2) Verify that the IP address in the upper right of the page is correct. If it is not, edit it in the IP Address field.
- 3) Click the Connect button. The button label changes to Disconnect.

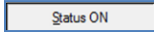


(Default) User Name : **admin**

(Default) Password : **admin**

6.2 Status

Clicking the **Status** button in the menu on the left of the page changes the button text to



and displays the Status Mode page, described in this section.

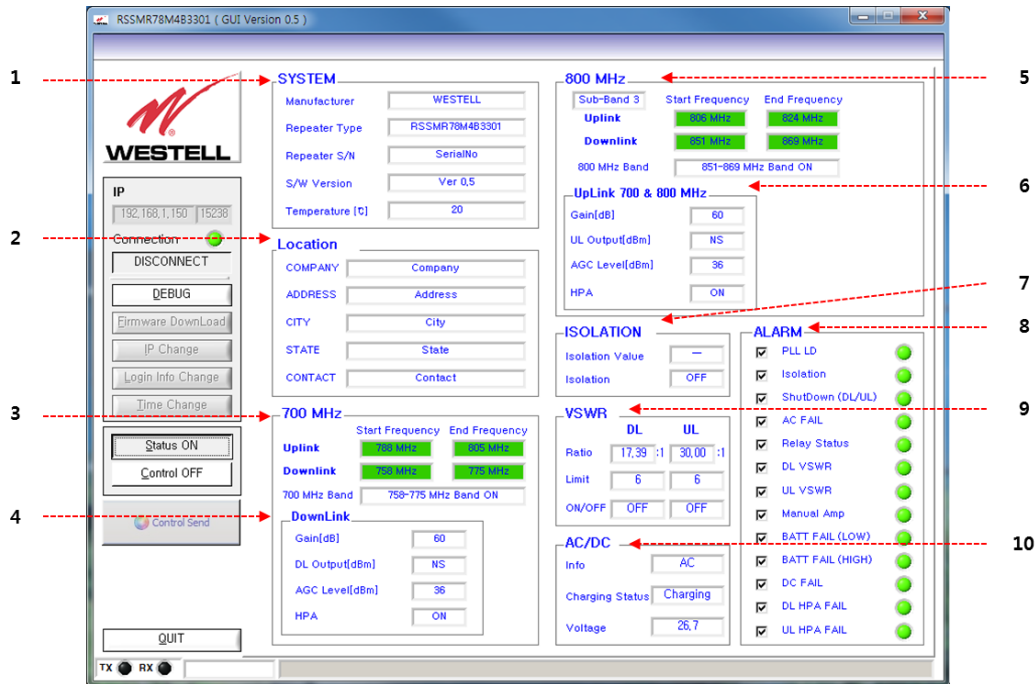


Figure 6-1: Status Mode Page

Item #	Section	
<p>1</p> <p>SYSTEM</p> <p>Manufacturer: WESTELL</p> <p>Repeater Type: RSMR78M4B3301</p> <p>Repeater S/N: SerialNo</p> <p>S/W Version: Ver 0.4</p> <p>Temperature [C]: 24</p>	<p>System Not User-Configurable/Informational Only</p>	
	<p>Manufacture</p>	Displays the Signal Booster's manufacturer
	<p>Signal Booster Type</p>	Displays Signal Booster Model Number
	<p>Signal Booster S/N</p>	Displays Signal Booster Serial Number
	<p>S/W Version</p>	Displays firmware version of the control board
	<p>Temperature</p>	Displays internal temperature of the Signal Booster
	<p>2</p> <p>Location</p> <p>COMPANY: Company</p> <p>ADDRESS: Address</p> <p>CITY: City</p> <p>STATE: State</p> <p>CONTACT: Contact</p>	<p>Location</p>
<p>Company</p>		Company information display
<p>Address</p>		Address information display
<p>City</p>		City information display
<p>State</p>		State information display
<p>Contact</p>		Contact information display

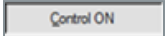
Item #	Section	
<p>3</p> <p>700 MHz</p> <p>Start Frequency End Frequency</p> <p>Uplink 788 MHz 805 MHz</p> <p>Downlink 758 MHz 775 MHz</p> <p>700 MHz Band 758-775 MHz Band ON</p> <hr/> <p>700 MHz</p> <p>Start Frequency End Frequency</p> <p>Uplink 788 MHz 805 MHz</p> <p>Downlink 758 MHz 775 MHz</p> <p>700 MHz Band 758-775 MHz Band OFF</p>	700 MHz	
	Uplink	
	Start Frequency	Displays 700 MHz uplink Start frequency
	Stop Frequency	Displays 700 MHz uplink Stop frequency
	Downlink	
	Start Frequency	Displays 700 MHz downlink Start frequency
	Stop Frequency	Displays 700 MHz downlink Stop frequency
	700MHz Band	Allows Main-band to be set to Select
	<p>4</p> <p>DownLink</p> <p>Gain[dB] 90</p> <p>DL Output[dBm] NS</p> <p>AGC Level[dBm] 36</p> <p>HPA ON</p>	Downlink
		Gain [dB]
DL Output[dBm]		Displays output level of the 700 MHz range
AGC Level [dBm]		Sets unit's maximum AGC output value
HPA		Allows the user to toggle the downlink HPA on or off
Item #	Section	
<p>5</p> <p>Sub-Band 1 Start Frequency End Frequency</p> <p>Uplink 806 MHz 809 MHz</p> <p>Downlink 851 MHz 854 MHz</p> <p>800 MHz Band 851-854 MHz Band ON</p> <hr/> <p>Sub-Band 2 Start Frequency End Frequency</p> <p>Uplink 806 MHz 816 MHz</p> <p>Downlink 851 MHz 861 MHz</p> <p>800 MHz Band 851-861 MHz Band ON</p>	800 MHz	
	Sub-band 1	
	Uplink	
	Start Frequency	Displays sub-band 1 uplink Start frequency
	Stop Frequency	Displays sub-band 1 uplink Stop frequency
	Downlink	
	Start Frequency	Displays the sub-band 1 downlink start frequency
	Stop Frequency	Displays sub-band 1 downlink Stop frequency
	800MHz Band	Allows sub-band 1 to be set to Select
	Sub-band 2	
	Uplink	
	Start Frequency	Displays sub-band 2 uplink Start frequency
	Stop Frequency	Displays sub-band 2 uplink Stop frequency
	Downlink	
	Start Frequency	Displays sub-band 2 downlink start frequency
	Stop Frequency	Displays sub-band 2 downlink Stop frequency
	800MHz Band	Allows sub-band 2 to be set to Select

Item #	Section	
<p>5, continued</p> <p>Sub-Band 3 Start Frequency End Frequency</p> <p>Uplink 806 MHz 824 MHz</p> <p>Downlink 851 MHz 869 MHz</p> <p>800 MHz Band 851-869 MHz Band ON</p>	Sub-band 3	
	Uplink	
	Start Frequency	Displays sub-band 3 uplink Start frequency
	Stop Frequency	Displays sub-band 3 uplink Stop frequency
	Downlink	
	Start Frequency	Displays sub-band 3 downlink Start frequency
	Stop Frequency	Displays sub-band 3 downlink Stop frequency
	800MHz Band	Allows sub-band 3 to be set to Select
	<p>6</p> <p>UpLink 700 & 800 MHz</p> <p>Gain[dB] 90</p> <p>UL Output[dBm] NS</p> <p>AGC Level[dBm] 36</p> <p>HPA ON</p>	Uplink 700 & 800 MHz
		Gain (dB)
UL Output [dBm]		Displays uplink output level
ALC Level [dBm]		Sets the unit's maximum ALC output value
HPA		Allows the user to toggle the uplink high power amplifier on or off
<p>7</p> <p>ISOLATION</p> <p>Isolation Value 105 +</p> <p>Isolation ON</p>		Isolation
	Isolation Value	When power is on, an isolation check is performed and the values are displayed
	Isolation	The isolation check can be performed with the RF on or off
	<p>Note: Neither the isolation check, nor recheck, will indicate a change in power levels if the unit's own power has been switched off.</p>	
Item #	Section	
<p>8</p> <p>ALARM</p> <ul style="list-style-type: none"> <input checked="" type="checkbox"/> PLL LD <input checked="" type="checkbox"/> Isolation <input checked="" type="checkbox"/> ShutDown (DL/UL) <input checked="" type="checkbox"/> AC FAIL <input checked="" type="checkbox"/> Relay Status <input checked="" type="checkbox"/> DL VSWR <input checked="" type="checkbox"/> UL VSWR <input checked="" type="checkbox"/> Manual Amp <input checked="" type="checkbox"/> BATT FAIL (LOW) <input checked="" type="checkbox"/> BATT FAIL (HIGH) <input checked="" type="checkbox"/> DC FAIL <input checked="" type="checkbox"/> DL HPA FAIL <input checked="" type="checkbox"/> UL HPA FAIL 	Alarm Status Not User-Configurable/Informational Only (GREEN = Normal; RED = Alarm)	
	PLL LD	Display alarm
	Isolation	Display alarm
	Shutdown (DL/UL)	Display alarm
	DC Fail	Display alarm
	Relay Status	Display alarm
	DL VSWR	DL Path VSWR check
	UL VSWR	UL Path VSWR check
	Manual Amp	User HPA OFF Alarm
	BATT FAIL (LOW)	BATT Low Power Alarm
	BATT FAIL (HIGH)	BATT High Power Alarm

Item #	Section																					
	DC FAIL	BATT / AC Power Alarm																				
	DL HPA FAIL	DL Path HPA Alarm																				
	UL HPA FAIL	UL Path HPA Alarm																				
<p style="text-align: center;">9</p> <p>VSWR</p> <table border="1" style="width: 100%; border-collapse: collapse;"> <tr> <td></td> <td style="text-align: center;">DL</td> <td></td> <td style="text-align: center;">UL</td> <td></td> </tr> <tr> <td>Ratio</td> <td style="text-align: center;">8,72</td> <td style="text-align: center;">:1</td> <td style="text-align: center;">30,00</td> <td style="text-align: center;">:1</td> </tr> <tr> <td>Limit</td> <td style="text-align: center;">6</td> <td></td> <td style="text-align: center;">6</td> <td></td> </tr> <tr> <td>ON/OFF</td> <td style="text-align: center;">ON</td> <td></td> <td style="text-align: center;">ON</td> <td></td> </tr> </table>		DL		UL		Ratio	8,72	:1	30,00	:1	Limit	6		6		ON/OFF	ON		ON		VSWR (DL / UL)	
	DL		UL																			
Ratio	8,72	:1	30,00	:1																		
Limit	6		6																			
ON/OFF	ON		ON																			
	Ratio	VSWR Ratio Status Display, 0.00 to 30.00																				
	Limit	VSWR Ratio Alarm Limit , Set 0.00 to 30.00																				
	On/Off	VSWR Alarm Display Enable(On)/Display(Off)																				
<p style="text-align: center;">10</p> <p>AC/DC</p> <table border="1" style="width: 100%; border-collapse: collapse;"> <tr> <td>Info</td> <td style="text-align: center;">AC</td> </tr> <tr> <td>Charging Status</td> <td style="text-align: center;">Charging</td> </tr> <tr> <td>Voltage</td> <td style="text-align: center;">26,9</td> </tr> </table>	Info	AC	Charging Status	Charging	Voltage	26,9	AC/DC															
Info	AC																					
Charging Status	Charging																					
Voltage	26,9																					
	Info	AC or BATT Status Display																				
	Charge Status	Charge Status Display Charge / Discharge																				
	Voltage	AD or DC Voltage Display 0.0 ~ 29.0																				

6.3 Control

Clicking the **Control** button in the menu on the left of the page changes the button text to



and displays the Control Mode page, described in this section.

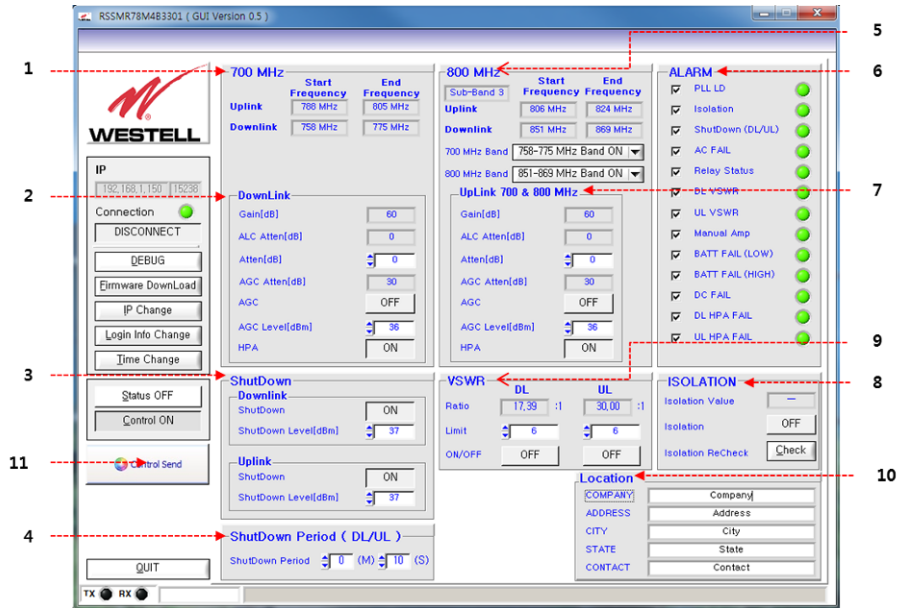
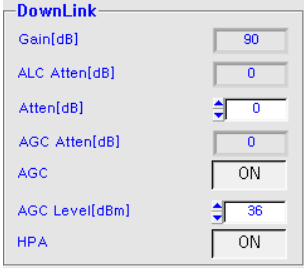
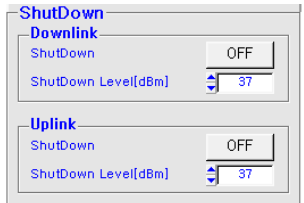

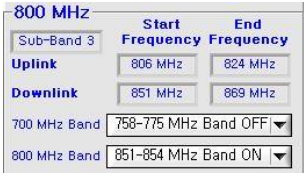
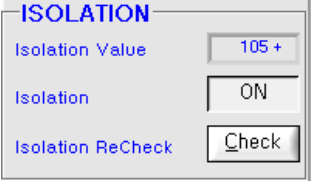
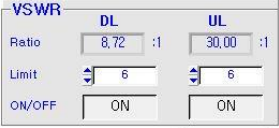




Figure 6-2: Control Mode Page

Item #	Section									
<p>1</p> <table border="1"> <tr> <td></td> <td>Start Frequency</td> <td>End Frequency</td> </tr> <tr> <td>Uplink</td> <td>788 MHz</td> <td>805 MHz</td> </tr> <tr> <td>Downlink</td> <td>758 MHz</td> <td>775 MHz</td> </tr> </table>		Start Frequency	End Frequency	Uplink	788 MHz	805 MHz	Downlink	758 MHz	775 MHz	700 MHz
		Start Frequency	End Frequency							
	Uplink	788 MHz	805 MHz							
	Downlink	758 MHz	775 MHz							
		Uplink								
		Start Frequency	Displays 700 MHz uplink Start frequency							
		Stop Frequency	Displays 700 MHz uplink Stop frequency							
	Downlink									
	Start Frequency	Displays the 700 MHz downlink Start frequency								
	Stop Frequency	Displays the 700 MHz downlink Stop frequency								

Item #	Section	
<p>2</p> 	Downlink	
	Gain [dB]	Displays downlink gain in the 700 MHz range
	ALC Atten [dB]	Displays attenuation value by ALC
	Atten [dB]	Displays attenuation value controlled by down link
	AGC Atten [dB]	Displays attenuation value controlled by AGC
	AGC	Control Auto Level Control Function On/Off
	AGC Level [dBm]	Sets the unit's maximum ALC output value
	HPA	Down link HPA On/Off
	<p>3</p> 	Shutdown Allows the shut-down level to be set
		Downlink
Shutdown		Allows the downlink shutdown level to be set to on or off.
Shutdown Level [dBm]		Allows the maximum shutdown level to be set between 23 and 37
Uplink		
Shutdown		Allows the uplink shut down level to be set to on or off
Shutdown Level [dBm]		Allows the maximum shutdown level to be set between 23 and 37
<p>4</p> 		Shutdown Period Allows the shutdown period to be set
	Shutdown Period	Allows the shutdown period to be set in minutes and seconds.
Item #	Section	
<p>5</p> 	800 MHz	
	Sub-band 1	
	Uplink	
	Start Frequency	Displays sub-band 1 uplink Start frequency
	Stop Frequency	Displays sub-band 1 uplink Stop frequency
	Downlink	
	Start Frequency	Displays sub-band 1 downlink Start frequency
	Stop Frequency	Displays sub-band 1 downlink Stop frequency
	800 MHz Band	Allows sub-band 1 to be set to Select
	Sub-band 2	
	Uplink	
	Start Frequency	Displays sub-band 2 uplink start frequency

Item #	Section	
<p style="text-align: center;">6</p> <div style="border: 1px solid gray; padding: 5px;"> <p>UpLink 700 & 800 MHz</p> <p>Gain[dB] <input type="text" value="90"/></p> <p>ALC Atten[dB] <input type="text" value="0"/></p> <p>Atten[dB] <input type="text" value="0"/></p> <p>AGC Atten[dB] <input type="text" value="0"/></p> <p>AGC <input type="text" value="ON"/></p> <p>AGC Level[dBm] <input type="text" value="36"/></p> <p>HPA <input type="text" value="ON"/></p> </div>	Gain (dB)	Displays status of the uplink gain
	ALC Atten [dB]	Displays attenuation value controlled by ALC
	Atten [dB]	Sets the attenuation value
	AGC Atten [dB]	Displays attenuation value controlled by AGC
	AGC	Control Auto Gain Control Function On/Off
	AGC Level [dBm]	Sets the unit's maximum AGC output value
	HPA	Uplink HPA On/Off
<p style="text-align: center;">7</p> <div style="border: 1px solid gray; padding: 5px;"> <p>ALARM</p> <p><input checked="" type="checkbox"/> PLL LD ●</p> <p><input checked="" type="checkbox"/> Isolation ●</p> <p><input checked="" type="checkbox"/> ShutDown (DL/UL) ●</p> <p><input checked="" type="checkbox"/> AC FAIL ●</p> <p><input checked="" type="checkbox"/> Relay Status ●</p> <p><input checked="" type="checkbox"/> DL VSWR ●</p> <p><input checked="" type="checkbox"/> UL VSWR ●</p> <p><input checked="" type="checkbox"/> Manual Amp ●</p> <p><input checked="" type="checkbox"/> BATT FAIL (LOW) ●</p> <p><input checked="" type="checkbox"/> BATT FAIL (HIGH) ●</p> <p><input checked="" type="checkbox"/> DC FAIL ●</p> <p><input checked="" type="checkbox"/> DL HPA FAIL ●</p> <p><input checked="" type="checkbox"/> UL HPA FAIL ●</p> </div>	Alarm (GREEN = Normal; RED = Alarm)	
	PLL LD	Displays alarm
	Isolation	Displays alarm
	Shutdown (DL/UL)	Displays alarm
	DC Fail	Displays alarm
	Relay Status	Displays alarm
	DL VSWR	DL Path VSWR check
	UL VSWR	UL Path VSWR check
	Manual Amp	User HPA OFF Alarm
	BATT FAIL (LOW)	BATT Low Power Alarm
	BATT FAIL (HIGH)	BATT High Power Alarm
	DC FAIL	BATT / AC Power Alarm
	DL HPA FAIL	DL Path HPA Alarm
	UL HPA FAIL	UL Path HPA Alarm

Item #	Section										
<p style="text-align: center;">8</p> 	<p>Isolation</p> <table border="1"> <tr> <td data-bbox="508 289 808 369">Isolation Value</td> <td data-bbox="808 289 1472 369">When power is on, an isolation check is performed and the values display.</td> </tr> <tr> <td data-bbox="508 369 808 449">Isolation</td> <td data-bbox="808 369 1472 449">The isolation check can be performed with the RF on or off.</td> </tr> <tr> <td data-bbox="508 449 808 529">Isolation Recheck</td> <td data-bbox="808 449 1472 529">The isolation check can be performed with the RF on or off.</td> </tr> </table> <p>Note: Neither the isolation check nor recheck will indicate a change in power levels if the unit's own power has been switched off.</p>	Isolation Value	When power is on, an isolation check is performed and the values display.	Isolation	The isolation check can be performed with the RF on or off.	Isolation Recheck	The isolation check can be performed with the RF on or off.				
Isolation Value	When power is on, an isolation check is performed and the values display.										
Isolation	The isolation check can be performed with the RF on or off.										
Isolation Recheck	The isolation check can be performed with the RF on or off.										
<p style="text-align: center;">9</p> 	<p>VSWR</p> <p style="text-align: center;">DL/UL</p> <table border="1"> <tr> <td data-bbox="508 688 808 741">Ratio</td> <td data-bbox="808 688 1472 741">VSWR Ratio Status Display, 0.00 to 30.00</td> </tr> <tr> <td data-bbox="508 741 808 793">Limit</td> <td data-bbox="808 741 1472 793">VSWR Ratio Alarm Limit , Set 0.00 to 30.00</td> </tr> <tr> <td data-bbox="508 793 808 835">On/Off</td> <td data-bbox="808 793 1472 835">VSWR Alarm Display Enable(On)/Display(Off)</td> </tr> </table>	Ratio	VSWR Ratio Status Display, 0.00 to 30.00	Limit	VSWR Ratio Alarm Limit , Set 0.00 to 30.00	On/Off	VSWR Alarm Display Enable(On)/Display(Off)				
Ratio	VSWR Ratio Status Display, 0.00 to 30.00										
Limit	VSWR Ratio Alarm Limit , Set 0.00 to 30.00										
On/Off	VSWR Alarm Display Enable(On)/Display(Off)										
<p style="text-align: center;">10</p> 	<p>Location</p> <table border="1"> <tr> <td data-bbox="508 894 808 936">Company</td> <td data-bbox="808 894 1472 936">Company information display</td> </tr> <tr> <td data-bbox="508 936 808 978">Address</td> <td data-bbox="808 936 1472 978">Address information display</td> </tr> <tr> <td data-bbox="508 978 808 1020">City</td> <td data-bbox="808 978 1472 1020">City information display</td> </tr> <tr> <td data-bbox="508 1020 808 1062">State</td> <td data-bbox="808 1020 1472 1062">State information display</td> </tr> <tr> <td data-bbox="508 1062 808 1115">Contact</td> <td data-bbox="808 1062 1472 1115">Contact information display</td> </tr> </table>	Company	Company information display	Address	Address information display	City	City information display	State	State information display	Contact	Contact information display
Company	Company information display										
Address	Address information display										
City	City information display										
State	State information display										
Contact	Contact information display										
<p style="text-align: center;">11</p> 	<p>Control Send</p> <p>When the unit is fully configured, the settings can be sent to the Signal Booster by clicking the Control Send button.</p>										

7.0 Installing Software Installation

- 1) Insert the included media into your computer and locate the **Setup.exe** file.
- 2) Double-click the file to begin software installation.



- 3) Navigate to the destination directory in which you want to install the file, Figure 6-3.

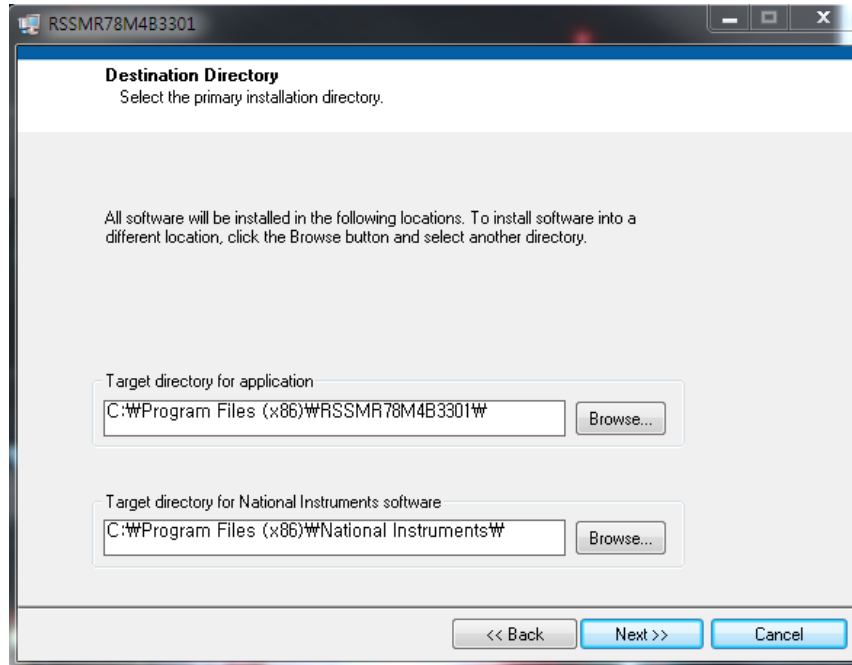


Figure 6-3: Navigate to the destination directory

- 4) Click **Next**. The progress window, displays, Figure 6-4.

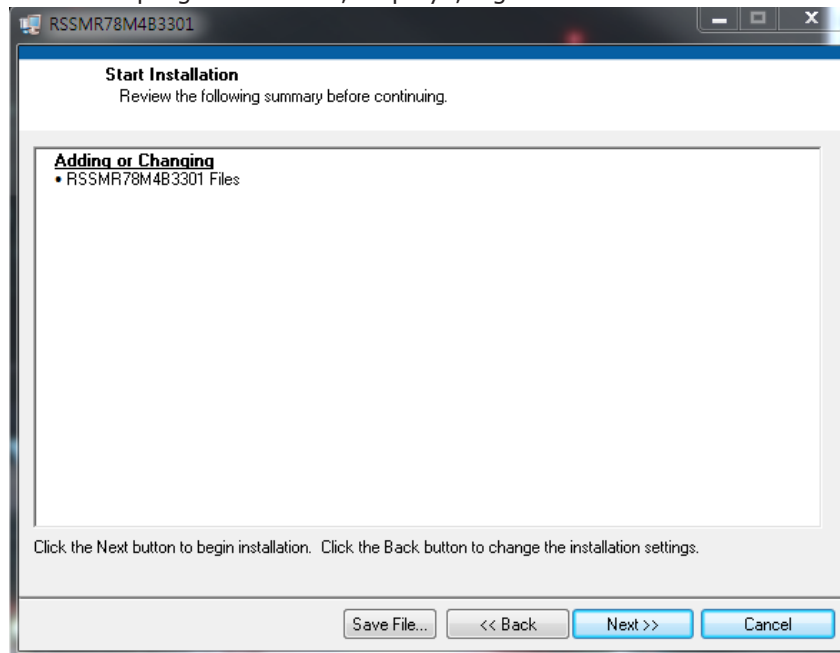


Figure 6-4: Click Next to Begin Installation

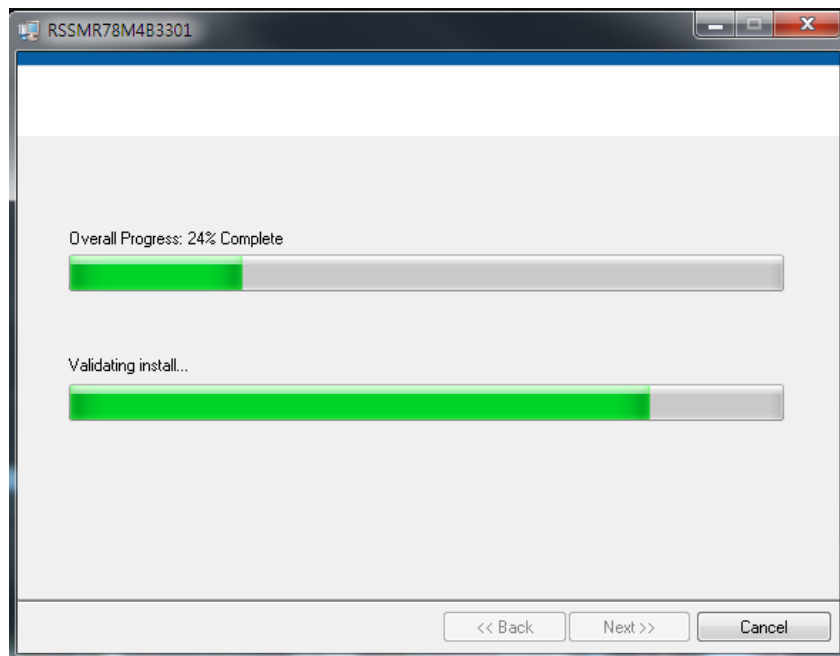


Figure 6-5: Installation Progress Window

- 5) When the installation is complete, click **Finish**, Figure 6-6.

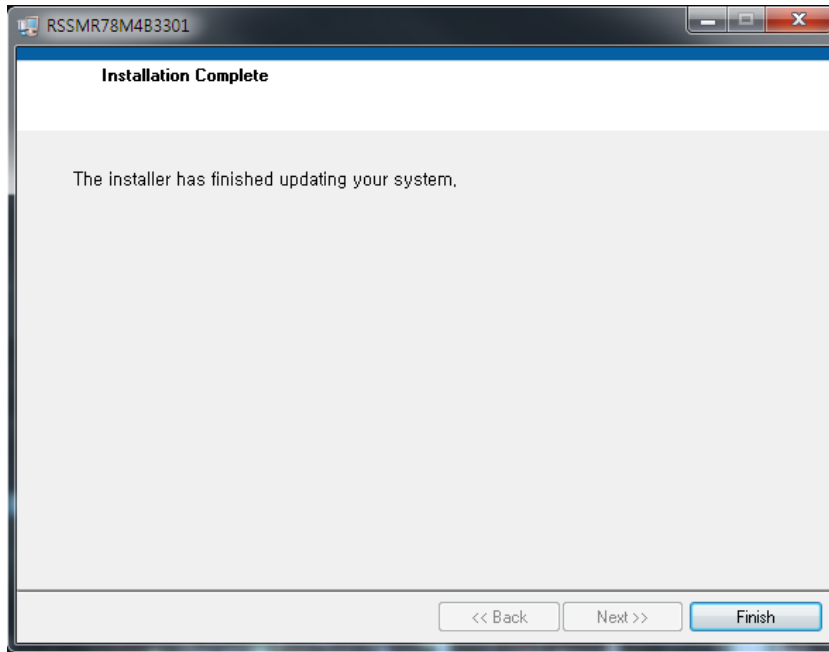


Figure 6-6: Installation Complete

7.1 Upgrading the Firmware

Follow the instructions in this section to upgrade to a newer version of system firmware, if necessary.

1. Click the **Control** button to display the Control page.
2. Click in the IP menu located on the left side of the Control page. The Firmware Upgrade progress window, Figure 7-1, displays.

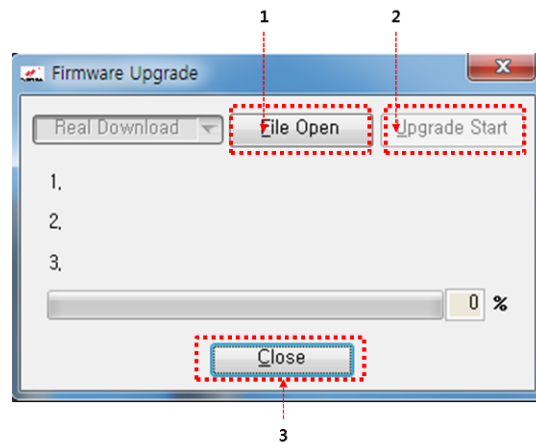


Figure 7-1: Firmware Upgrade Progress Window File Open Tab

3. Click the **File Open** tab in the Firmware Upgrade progress window to display it, Figure 7-1.
4. Click to select the desired version file.
5. Click in the **Specify INI File to Open** browser window, Figure 7-2. The Firmware Version Check dialog window displays, Figure 7-2.

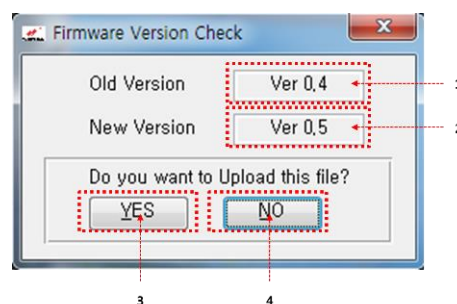


Figure 7-2: Firmware Version Check

6. Click in the Firmware Version Check dialog window, Figure 7-3. The firmware upgrade begins, as indicated by the progress bar in the Firmware Version Check window, Figure 7-3.

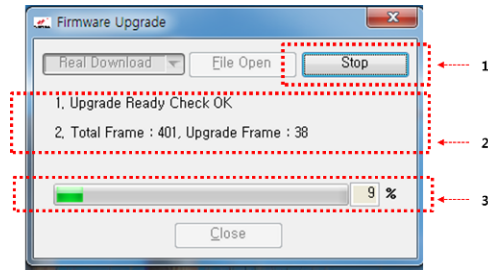


Figure 7-3: Firmware Update Status

#	Item	Function
1	Stop	Button to Stop Upgrade
2	Status	Display real-time upgrade status
3	Progress	Display Upgrade Progress

Note: You can stop the upgrade by pressing the Stop button.

- When upgrade is completed, Firmware Upgrade Window is closed.

7.2 IP Change

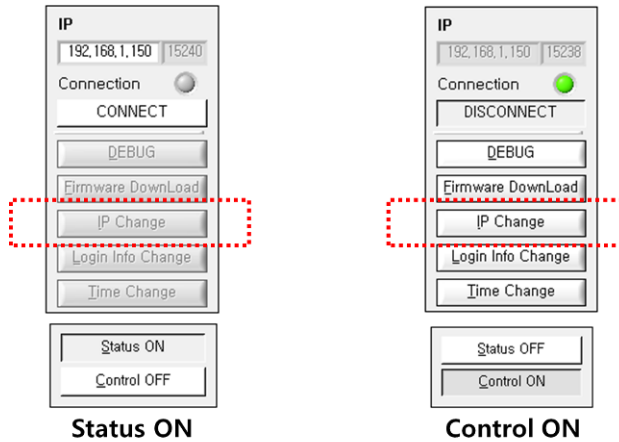


Figure 7-3: IP Settings

1. With Control ON, the IP Change button is activated.

7.2.1 IP Change Window

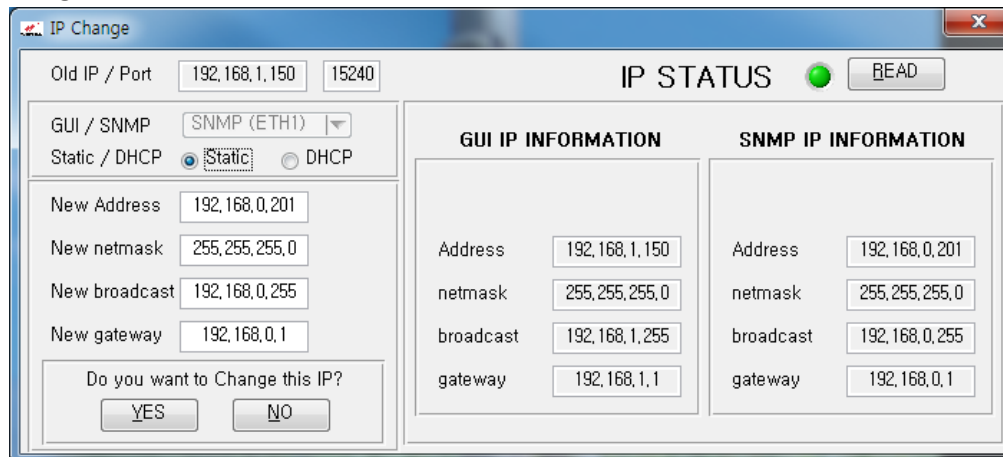


Figure 7-4: IP Change Window

1. Successful completion of IP Read, Status LED turns green and change icon is activated
2. When the IP Change Window is opened, the current status is displayed, Figure 7-10
 - a. Static IP can be set. (See 7.2.2)
 - b. DHCP IP can be set. (See 7.2.3)

7.2.2 Static IP Setting

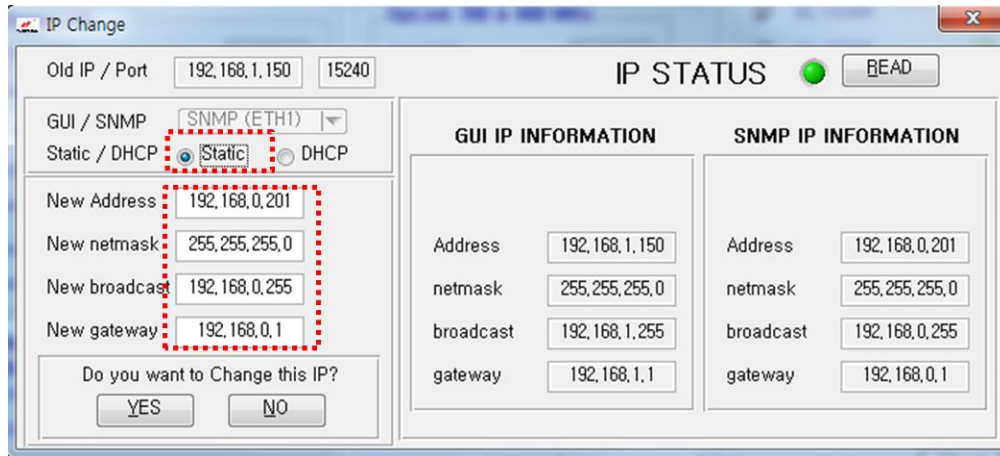


Figure 7-5: Static IP Setting

1. Please write the Address / netmask / broadcast / gateway
2. If have all information set, please press YES button.

7.2.3 DHCP IP Setting

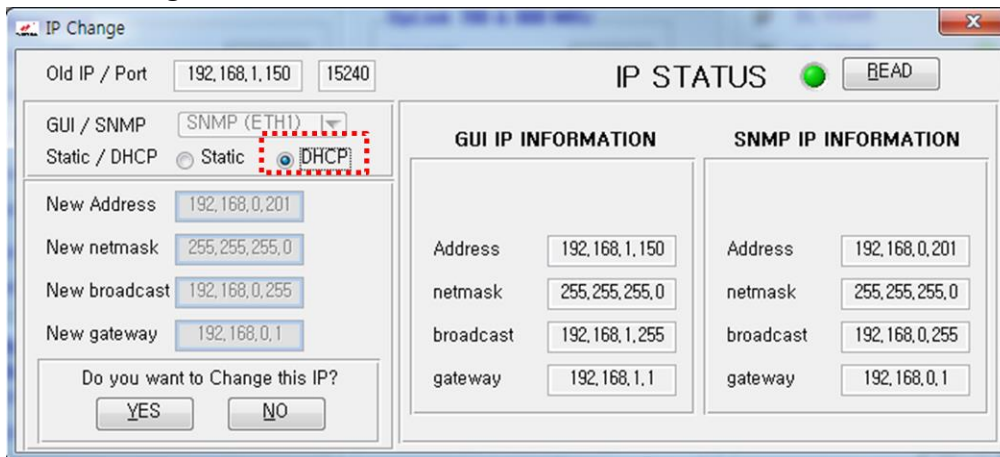


Figure 7-6: DHCP IP Setting

1. After DHCP select please click the YES button.

Appendix A Important Product Information

A.1 Registration Number

FCC – NVRC51080SP78

A.2 UL

This product is UL Listed.

Appendix B Acronyms and Abbreviations

Table B-1 contains the acronyms and abbreviations used in this manual, along with a definition for each one.

Table B-1: Acronyms and Abbreviations

Acronym/Abbreviation	Definition
AC	Alternating Current
AGC	Automatic Gain Control
COM	Communications
dB	Decibels
dBc	Decibels relative to the carrier
dB _i	Decibels relative to isotropic
dBm	The power ratio in decibels (dB) of the measured power referenced to one milliwatt (mW)
DC	Direct Current
DL	Downlink
FCC	Federal Communications Commission
HPA	High-Powered Amplifier
IF SAW	Intermediate Frequency Surface Acoustic Wave
IP	Internet Protocol
LAN	Local Area Network
LED	Light Emitting Diode
MHz	Megahertz
NMS	Network Management System
OSC	Oscillator
PLL LD	Phase-locked loop with lock detection
RF	Radio Frequency
RS-232C	Serial Communication Standard
UL	Uplink
UPS	Uninterruptable Power Supply
VAC	Volts Alternating Current (AC Voltage)
VSWR	Voltage Standing Wave Ratio