



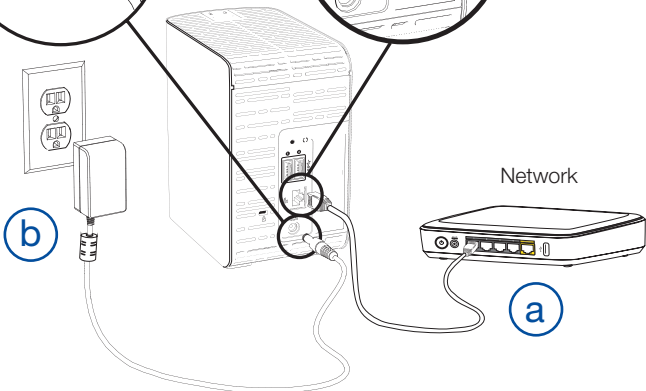
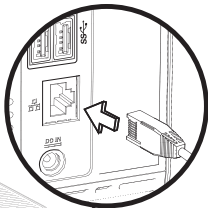
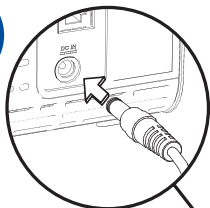
# My Cloud™ EX2

Personal Cloud Storage



Quick Installation Guide

1



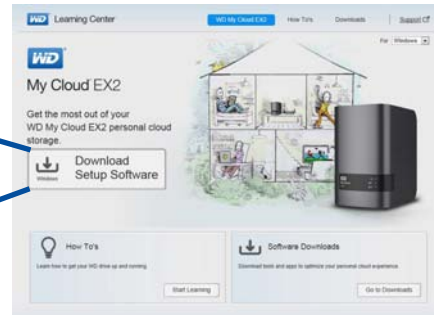
# Client Computers

2



<http://wd.com/setup/wdmycloudEX2>

3



4



OR

# Mobile Devices

2



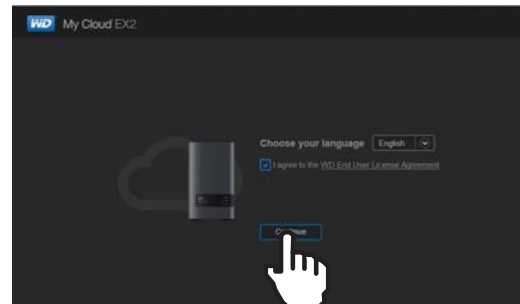
<http://wdmycloudEX2>



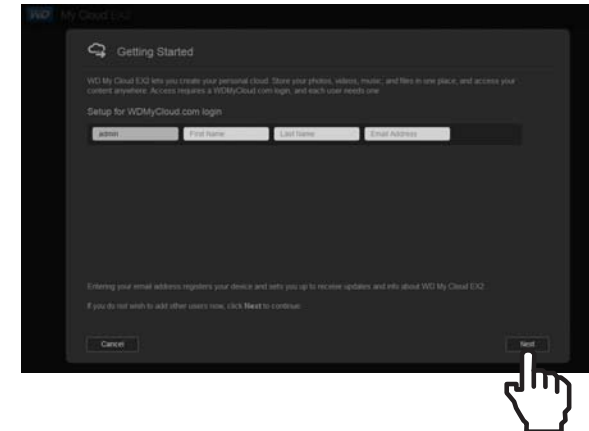
<http://wdmycloudEX2.local>

\* WD My Cloud EX2 and wireless device must be Wi-Fi® connected to the same network.

3



4





<http://products.wd.com/updates>

## Desktop App



**WD My Cloud™**

## Mobile Apps



**WD My Cloud**



**WD Photos™**



<http://products.wd.com/wdmycloud/apps>

- \* WD My Cloud EX2 und das Wireless-Gerät müssen über Wi-Fi mit demselben Netzwerk verbunden sein.
- \* Le WD My Cloud EX2 et le périphérique sans fil doivent être connectés en Wi-Fi au même réseau.
- \* WD My Cloud EX2 e il dispositivo wireless devono essere connessi via Wi-Fi alla stessa rete.
- \* WD My Cloud EX2 y el dispositivo inalámbrico deben tener una conexión Wi-Fi a la misma red.
- \* WD My Cloud EX2 en het draadloze apparaat moeten via Wi-Fi verbonden zijn met hetzelfde netwerk.
- \* WD My Cloud EX2 oraz urządzenie bezprzewodowe muszą być połączone z siecią za pomocą Wi-Fi.
- \* O WD My Cloud EX2 e o dispositivo sem fio devem estar conectados por Wi-Fi à mesma rede.
- \* WD My Cloud EX2 og trådløs enhed skal have oprettet Wi-Fi-forbindelse til det samme netværk.
- \* WD My Cloud EX2 ja langattoman laitteen on oltava Wi-Fi-yhteydessä samaan verkkoon.
- \* WD My Cloud EX2 og den trådløse enheten må være trådløst koblet til det samme lokalnettverket.
- \* WD My Cloud EX2 och trådlös enhet måste vara Wi-Fi-anslutna till samma nätverk.
- \* A WD My Cloud EX2 meghajtónak és a vezeték nélküli eszköznek ugyanarra a hálózatra kell csatlakoznia Wi-Fi kapcsolatok keresztül.
- \* WD My Cloud EX2 ve kablosuz aygıtın, Wi-Fi üzerinden aynı ağına bağlı olması gerekir.
- \* WD My Cloud EX2 a bezdrátové zařízení musí být připojeny ke stejné síti pomocí připojení Wi-Fi.
- \* WD My Cloud EX2 a bezdrôtové zariadenie musia byť pripojené do rovnakej siete pomocou pripojenia Wi-Fi.  
يجب توصيل WD My Cloud EX2 والجهاز اللاسلكي بشبكة Wi-Fi ذاتها. \*
- \* Η μονάδα WD My Cloud EX2 και η ασύρματη συσκευή πρέπει να είναι συνδεδεμένες μέσω Wi-Fi στο ίδιο δίκτυο.
- \* WD My Cloud EX2 およびワイヤレス端末は、同一ネットワークにWi-Fi接続してください。
- \* WD My Cloud EX2 및 무선 장치는 같은 네트워크에 Wi-Fi로 연결되어 있어야 합니다.
- \* WD My Cloud EX2 și dispozitivul fără fir trebuie să fie conectate prin Wi-Fi la aceeași rețea.
- \* WD My Cloud EX2 и беспроводное устройство должны быть подключены по Wi-Fi к одной и той же сети.
- \* WD My Cloud EX2 和无线设备必须通过 Wi-Fi 连接到同一网络。
- \* WD My Cloud EX2 和無線裝置必須透過 Wi-Fi 連線至相同的網路。

# Technical Support Services

<http://support.wd.com>  
<http://www.wd.com>

If you encounter problems with this product, please contact WD Technical Support.

---

## United States/North America

English	800.ASK.4WDC (800.275.4932)
Spanish	800.832.4778

---

## Asia Pacific

(toll free where available)

Asia Pacific (non toll free)	+65.6848.6008
Japan	00 531 650442/ 0120 994 120
Australia & New Zealand	+800.2275.4932

---

## Europe (toll free\*)

0800.27549338

*\* Austria, Belgium, Denmark, France, Germany, Ireland, Italy, Netherlands, Norway, Spain, Sweden, Switzerland, United Kingdom*

Europe (non toll free)	+31.880062100
Russia	8 10 8002 335 50110

---

## Middle East

0031.880062100



Western Digital, WD, and the WD logo are registered trademarks of Western Digital Technologies, Inc. in the U.S. and other countries; and WD My Cloud is a trademark of Western Digital Technologies, Inc. in the U.S. and other countries. Other marks may be mentioned here in that belong to other companies. Specifications subject to change without notice.

© 2013 Western Digital Technologies, Inc. All rights reserved.

Western Digital  
3355 Michelson Drive, Suite 100  
Irvine, California, U.S.A. 92612