

BlueGate 2100

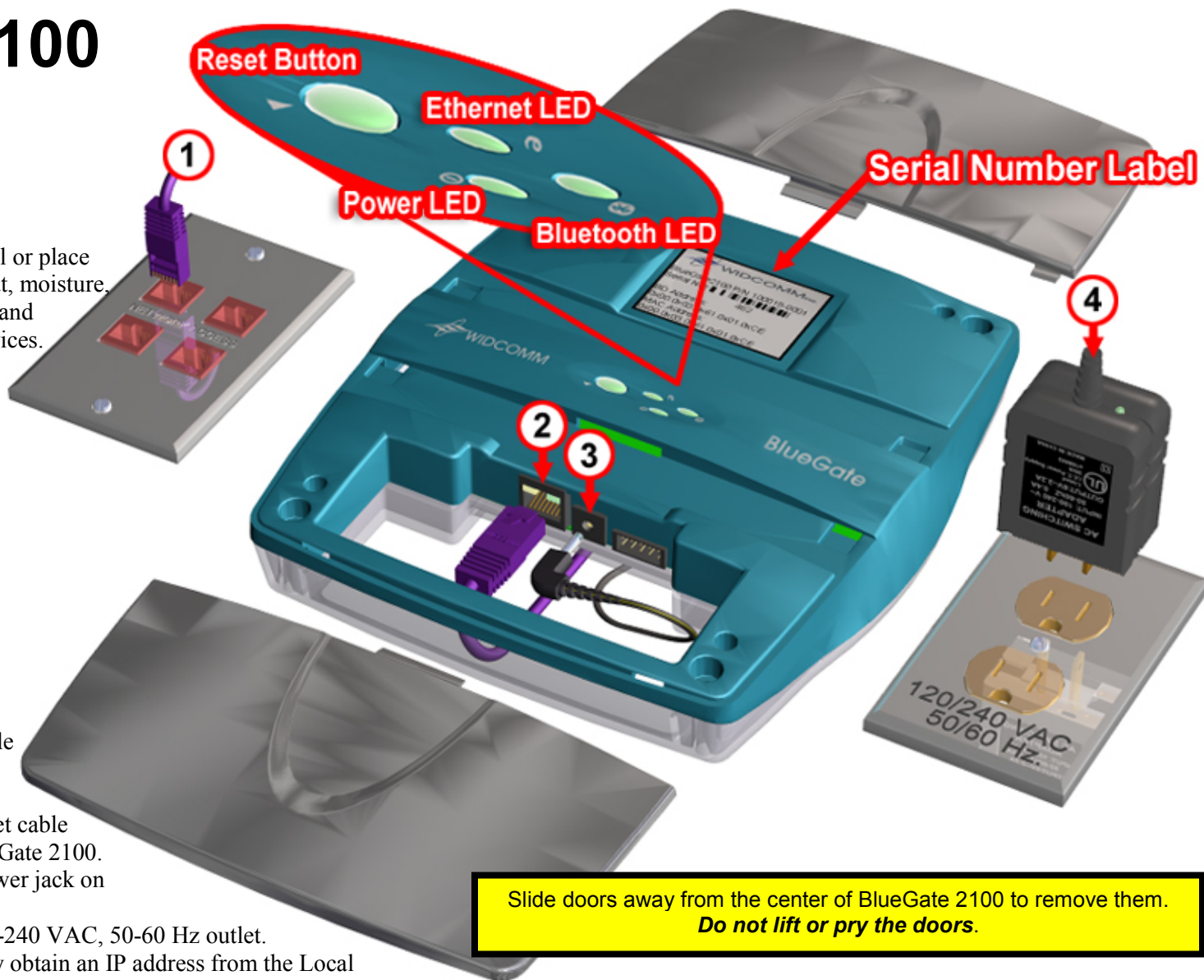
Quick Install

1. Mount BlueGate 2100 on the wall or place it on a flat surface away from heat, moisture, open flames, microwave devices and 2.4 GHz telecommunications devices. Route the Ethernet cable away from other cables that may cause interference.

CAUTION:

Telephone cables often use the same type of connector as network cables; some wall plates, especially in office environments, have both telephone and network jacks in the same plate.

2. Snap one end of the Ethernet cable into the jack of a hardwired connection to the network.
3. Place the other end of the Ethernet cable into the RJ-45 connector on BlueGate 2100.
4. Insert the power plug into the power jack on BlueGate 2100.
5. Plug the power supply into a 120-240 VAC, 50-60 Hz outlet. BlueGate 2100 will automatically obtain an IP address from the Local Area Network DHCP server. Refer to section 5.2 of the BlueGate Administrator's Guide if installing in a non-DHCP environment.
6. Insert the BlueGate 2100 compact disc and enter the MAC (Media Access Control) address (found on the serial number label) on the second screen of the wizard. On the third screen select the "Check to automatically open browser when finished" option and click Finish. If the wizard does not start automatically when the CD is inserted, click `Start > Run`, enter `D:\FindIP.exe` in the dialog box and then click OK.



Slide doors away from the center of BlueGate 2100 to remove them.
Do not lift or pry the doors.

FCC STATEMENT

WIDCOMM, Inc., 9645 Scranton Road, Suite 205, San Diego, CA 92121,
858-453-8400.

BlueGate, PKLWBG-2100.

This device complies with part 15 of the FCC Rules. Operation is subject to the following two conditions: (1) This device may not cause harmful interference, and, (2) This device must accept any interference received including interference that may cause undesired operation.

Per CFR 47, PART 15, Paragraph 15.21: User changes or modifications not expressly approved by the party responsible for compliance could void the users authority to operate the equipment.

Application PKLWBG-2100

Additional Information for the FCC approval of Widcomm Inc.'s BlueGate 2100

RF Exposure Statement

IMPORTANT NOTE: To meet FCC RF exposure compliance requirements the following antenna installation and device operating configurations must be satisfied: *BlueGate 2100 must be wall or ceiling mounted or placed on a surface such that a minimum normal operating distance of 20 centimeters is maintained from the human body at all times.*

LICENSED SOFTWARE

© Copyright 2000 – 2001, WIDCOMM, Inc. (WIDCOMM). All rights reserved.

WARNING

This software and accompanying documentation are protected by copyright law and international treaties. Unauthorized reproduction or distribution of this software, or any portion of it, may result in severe civil and criminal penalties, and will be prosecuted to the maximum extent possible under the law.

Use of this software is governed by the terms of the end user license agreement that accompanies or is included with such software. Unless otherwise noted in the end user license agreement, or herein, no part of the documentation accompanying this software, whether provided in printed or electronic form may be reproduced in any form, or stored in a database or retrieval system, or transmitted in any form or by any means, or used to make any derivative work (such as translation, transformation, or adaptation) without the express, prior written consent of WIDCOMM.

Trademark(s)™ and Registered Trademark(s)®

WIDCOMM, the WIDCOMM logo, and BlueGate are trademarks of WIDCOMM, Inc. Bluetooth and the Bluetooth logos are trademarks owned by Bluetooth SIG, Inc., U.S.A. and licensed to WIDCOMM, Inc.

Other brand and product names may be registered trademarks or trademarks of their respective holders.

Part Number: 100238-1001

Document ID: 010710-0608-BG2100_Start_Here.doc

Start Here



BlueGate 2100

Network Access Point
With
Point-to-Multipoint
Support