

DEX™

A WIRELESS WORLD

USER INSTRUCTIONS

RC-DEX REMOTE CONTROL

CONTENTS

YOUR NEW DEX™ REMOTE CONTROL	4
ACCESSORIES	7
THE BATTERY	8
CHANGING THE BATTERY	9
USING THE REMOTE CONTROL	11
OPERATING RANGE	11
LIGHT-EMITTING DIODE	11
ADJUSTING THE VOLUME	12
CHANGING PROGRAMS	13
CARING FOR YOUR REMOTE CONTROL	14
WARNINGS	15
TROUBLESHOOTING	17
REGULATORY INFORMATION	18

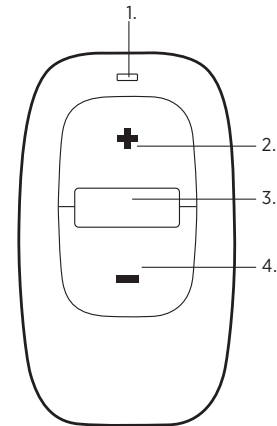
YOUR NEW DEX™ REMOTE CONTROL

We hope you will be pleased with your Widex hearing aid remote control. These user instructions explain how your remote control should be operated. Please read this booklet carefully before you start using your remote control.

The remote control gives simple access to hearing aid functions such as volume adjustment and program change. It is also provided with a light-emitting diode (LED) for visual indication.

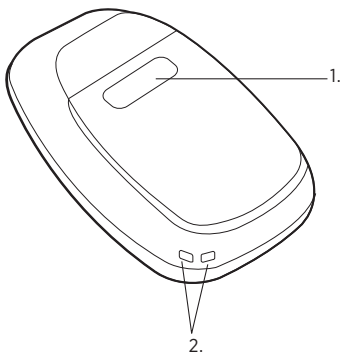
FRONT VIEW

1. LED
2. Volume up
3. Program toggle
4. Volume down



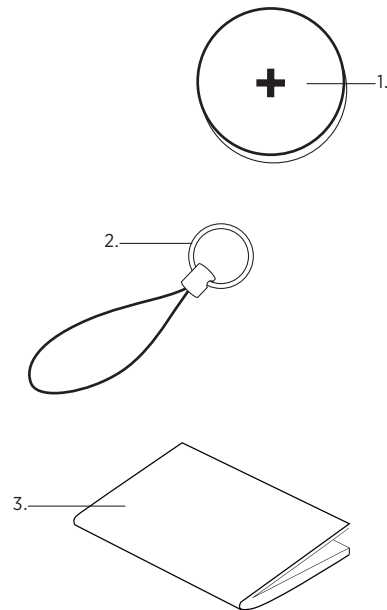
REAR VIEW

1. Battery cover
2. Attachment eye



ACCESSORIES

1. Battery
2. Key ring/string
3. User instructions



THE BATTERY

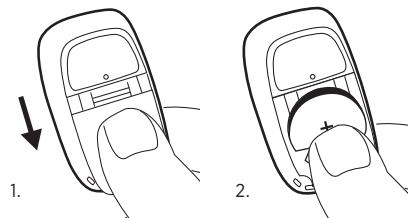
The battery type for this remote control is:
Lithium CR2032

To obtain replacement batteries, please consult your hearing care professional. Please note the expiry date and the recommendations regarding disposal of used batteries on the battery pack.

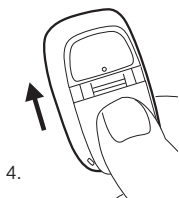
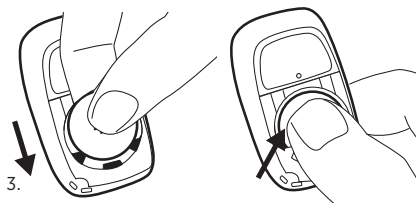
The remote control is on when a functioning battery is correctly placed in the battery compartment. Battery life is up to 12 months, depending on how often you activate the remote control keys.

CHANGING THE BATTERY

1. Slide the battery cover downwards to remove it.
2. Press the battery as illustrated to tip it up, and take it out.



3. Insert the new battery at an angle as illustrated and press to click the battery into place. The plus (+) sign on the battery must face upwards.
4. Replace the battery cover.



USING THE REMOTE CONTROL

The remote control enables you to operate your hearing aid discreetly, e.g. from your pocket or handbag. The remote control is provided with an eye for attachment of a key ring or similar.

OPERATING RANGE

The operating range from the remote control to the hearing aid is up to 1.0 m.

LIGHT-EMITTING DIODE

A green light in the diode indicates that one of the keys on the remote control has been activated.

ADJUSTING THE VOLUME

Press the volume up key (+) briefly to raise the volume. Press the volume down key (-) briefly to lower the volume.

When you activate the volume keys, you will hear a brief beep-tone. When the maximum or minimum adjustment level is reached, you will hear a long beep-tone.

CHANGING PROGRAMS

With your remote control, you can choose from a number of listening programs depending on how many programs your hearing aid has been programmed with. Press the program toggle key briefly to change listening program.

Zen+

If your hearing aid is programmed with the special Zen+ program, you access this by a long key press (2 sec.) on the program toggle key. Short presses on the program toggle key will then allow you to choose from among any available Zen styles. You return to the standard listening program with a long press of the key.

CARING FOR YOUR REMOTE CONTROL

The remote control is a valuable object and should be treated with care. Here are some things you can do to prolong the life of your remote control:

- Do not expose it to extreme temperatures or high humidity.
- Clean the remote control with a soft cloth. Never wash your remote control with water, cleaning solutions or other liquids.
- Do not carry your remote control with you during X-rays, scans or radiation treatments and never place your remote control in a microwave oven. These are some of the types of radiation that can damage your remote control. However, radiation from, for example, room surveillance equipment, burglar alarms or mobile phones is weaker and will not damage your remote control.
- Never try to open or repair the remote control yourself. (To be performed by authorised personnel only).

WARNINGS

Batteries can be dangerous if swallowed or used improperly. Swallowing or improper use can result in severe injury, or even fatalities. In case of ingestion, contact a physician immediately.

- Keep your remote control and its parts, accessories and batteries out of reach of children and anyone else who might swallow such items or otherwise cause injury to themselves. Do not change batteries in front of them and do not let them see where you keep your battery supply. Discard used batteries carefully.
- Never put a battery or hearing aid in your mouth for any reason as you may risk swallowing it.
- Do not use your remote control on aeroplanes or in hospitals without permission.
- Do not use your remote control in mines or other areas with explosive gases.

- Although your remote control has been designed to comply with the most stringent international electromagnetic compatibility standards, the possibility cannot be excluded that it may cause interference with other equipment, such as medical devices.

CAUTION

Risk of explosion if battery is replaced by an incorrect type or recharged.

Dispose of used batteries according to the instructions.

TROUBLESHOOTING

Problem	Possible cause	Solution
Your remote control does not work	The battery is dead or does not work	Change the battery
	The battery in your hearing aid is exhausted	Change the battery
	Out of operating range	Move within operating range

REGULATORY INFORMATION



Hereby, Widex A/S declares that this RC-DEX is in compliance with the essential requirements and other relevant provisions of Directive 1999/5/EC.

A copy of the Declaration of Conformity can be found at: <http://www.widex.com>



FCC ID: TTY-RCDEX
IC: 5676B-RCDEX

FEDERAL COMMUNICATIONS COMMISSION AND INDUSTRY CANADA STATEMENT

This device complies with part 15 of the FCC Rules and RSS-210 of the Canadian Rules. Operation is subject to the following two conditions:

- (1) this device may not cause harmful interference, and
- (2) this device must accept any interference received, including interference that may cause undesired operation.

NOTE: This equipment has been tested and found to comply with the limits for a Class B digital device, pursuant to Part 15 of the FCC Rules. These limits are designed to provide reasonable protection against harmful interference in a residential installation. This equipment generates, uses and can radiate radio frequency energy and, if not installed and used in accordance with the instructions, may cause harmful interference to radio communications. However, there is no guarantee that interference will not occur in a particular installation. If this equipment does cause harmful interference to radio or television reception, which can be determined by turning the equipment off and on, the user is encouraged to try to correct the interference by one or more of the following measures:

- Reorient or relocate the receiving antenna.
- Increase the separation between the equipment and receiver.
- Connect the equipment into an outlet on a circuit different from that to which the receiver is connected.
- Consult the dealer or an experienced radio/TV technician for help.

NOTE: Changes or modifications not expressly approved by the party responsible for compliance could void the user's authority to operate the equipment.



Hearing aids, accessories and batteries should not be disposed of with normal household waste. Please consult your national Widex distributor for advice on how to dispose of these items.

CE 0459

WIDEX • 3540 Lyngø
Denmark • www.widex.com



Printed by HTO / 02-10
9 514 0128 001 #01