



# Hip Talkies

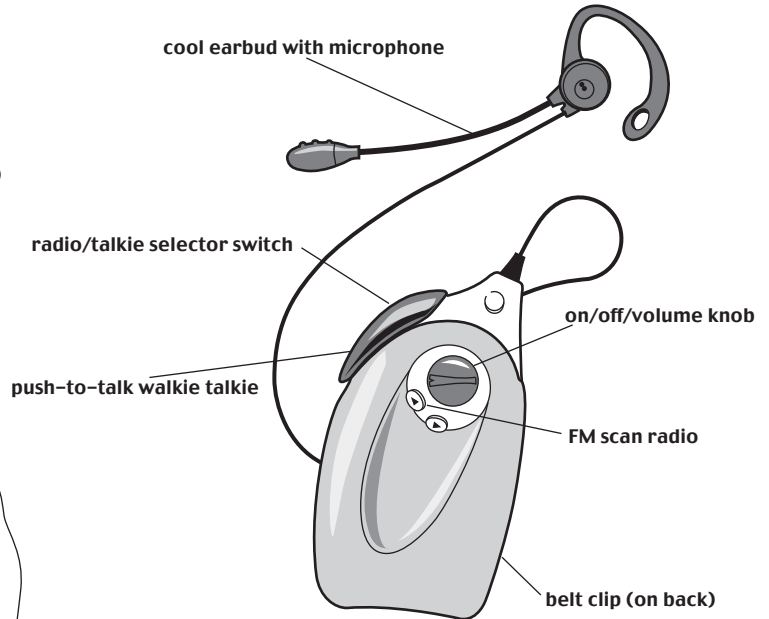
Ages 6 and up  
82013

**Important: keep these instructions. Do not discard.**

- 1 (one) 9-volt battery required per Hip Talkie (batteries not included)  
 Only adults should install and replace batteries  
 Alkaline batteries recommended for longer life  
 Do not use rechargeable batteries  
 Do not recharge non-rechargeable batteries  
 Remove exhausted batteries from the toy  
 Insert batteries with the correct polarity (as shown in figure 2)  
 Do not short-circuit the battery supply terminals

### Hip Talkie features

1. Cool earbud with microphone (wear on left ear only)
2. Belt clip (on back)
3. FM scan radio
4. Push-to-talk walkie talkie
5. Radio/talkie selector switch
6. On/off/volume knob



cool earbud with microphone  
wear on left ear only, as shown

### Parents: to install batteries

- Hip Talkies require two 9-volt Alkaline batteries, one battery for each unit (batteries not included).
1. With a small Phillips screwdriver, remove the screw and battery door on the back of Hip Talkie (figure 1).
  2. Snap battery clip on battery as shown (figure 2).
  3. Place battery into battery compartment.
  4. Replace the battery door and tighten the screw.

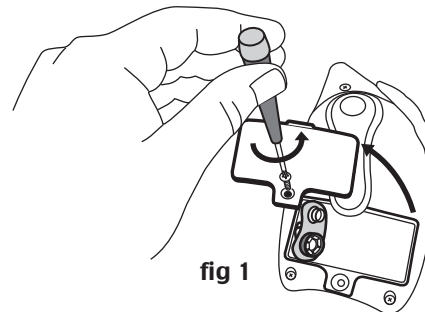


fig 1

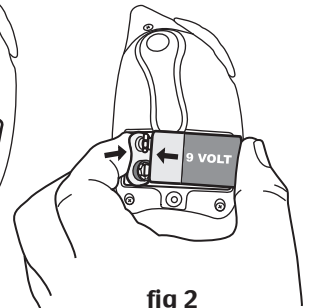


fig 2

### To use the walkie talkie

1. Turn the purple knob on the front clockwise (figure 3). You will hear a click, this means that it is on.
2. Turn knob clockwise (to the right) to increase the volume (figure 3).
3. Move the selector to the talkie position (figure 4).
4. Push the push button to talk to your friend (figure 4). Her Hip Talkie must also be on and selector in the talkie position.
5. Release the push button to listen.
6. To turn off your Hip Talkie turn the purple knob counterclockwise (to the left) until it clicks.

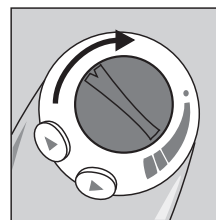


fig 3

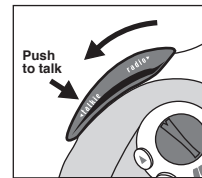


fig 4

### To use the FM radio

1. Turn the hip talkie on using the purple knob (figure 3).
2. Move the selector switch to radio (figure 5).
3. The radio will always start at 88 FM frequency when you turn it on.
4. To find a different station, push the scan button to select the next station higher, (figure 6). The radio automatically scans and stops at the next available higher FM station.
5. To scan down, press the reset button (figure 6) to start scanning from 88 FM.

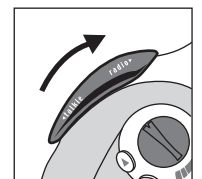


fig 5

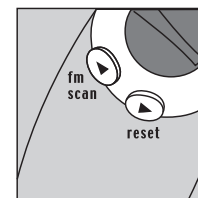


fig 6

**Warning :** Changes or modifications to this toy that are not expressly approved by Wild Planet Toys, Inc. could void the user's authority to operate the toy.

**WARNING:**

**CHOKING HAZARD:** Small Parts.  
Not for Children Under 3 Years.

HIP TALKIES 82013-4000 13/05/02

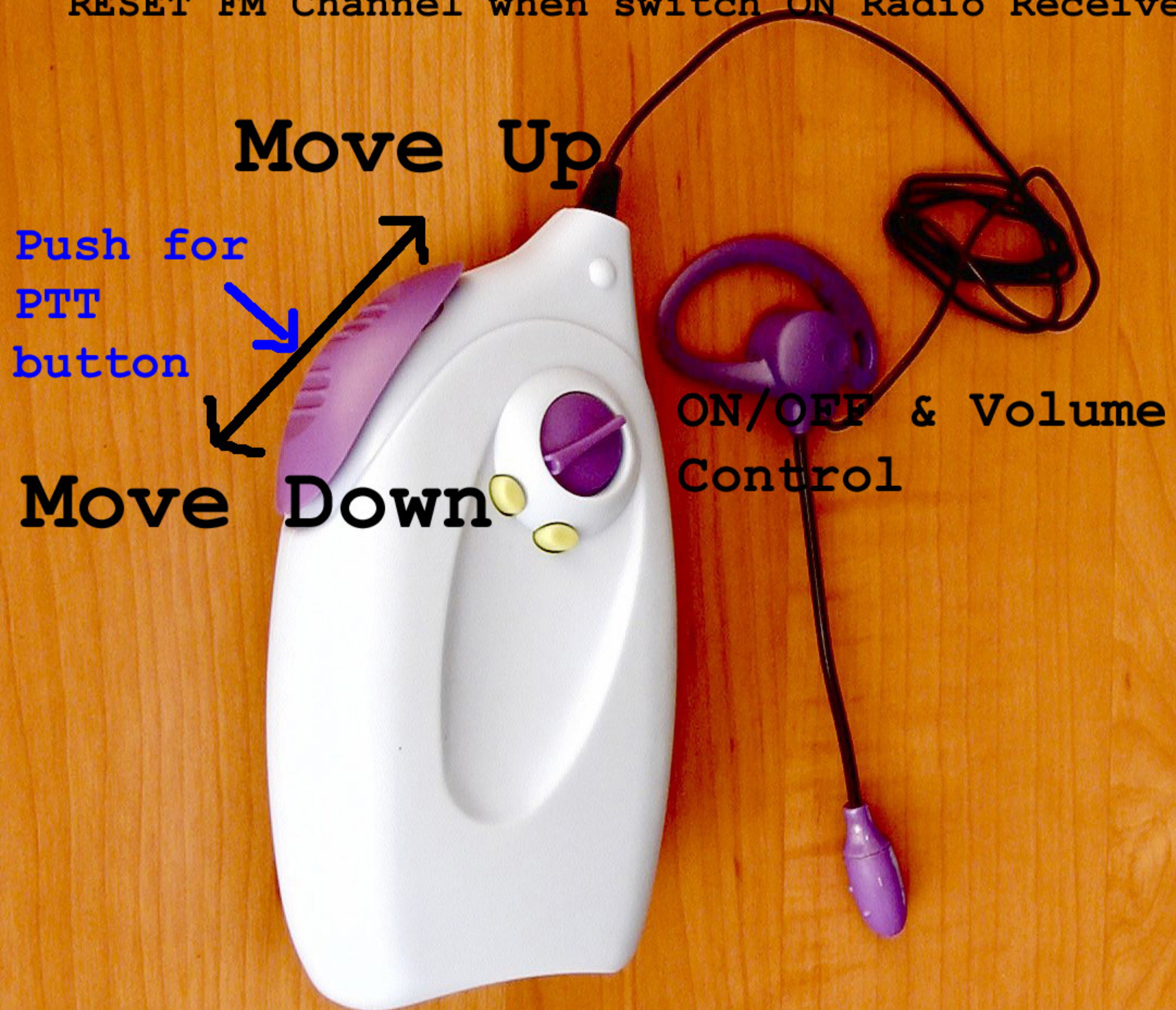
IF YOU HAVE ANY QUESTIONS, PLEASE CONTACT US AT  
1-800-247-6570  
WWW.WILDPLANET.COM  
©2002 Wild Planet Toys, Inc.



After Turn "ON/OFF & Volume Control" clockwise, user can select either:

1. FM Band Radio Receiver\* when Move Switch Up; or
2. Walkie Talkie when Move Switch down.

\*Remark: Yellow buttons are used for SCAN & RESET FM Channel when switch ON Radio Receiver.



Walkie Talkie Mode while Move Switch Down.  
After that, Push Switch for Push-To-Talk.