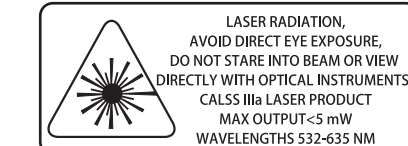


#0848093

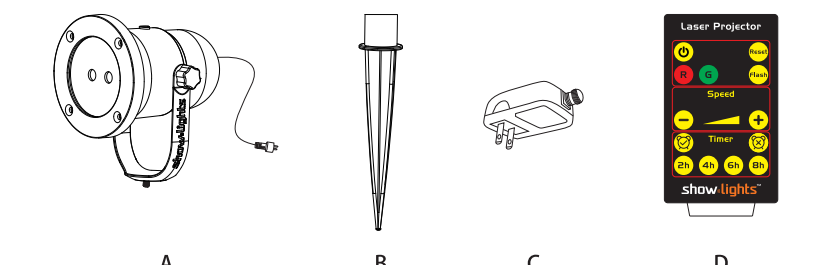


LAZER RADIATION, AVOID DIRECT EYE EXPOSURE. DO NOT STARE INTO BEAM OR VIEW DIRECTLY WITH OPTICAL INSTRUMENTS, CLASS IIIa LASER PRODUCT MAX OUTPUT <5 mW WAVELENGTHS 532-635 NM

Version: 2017

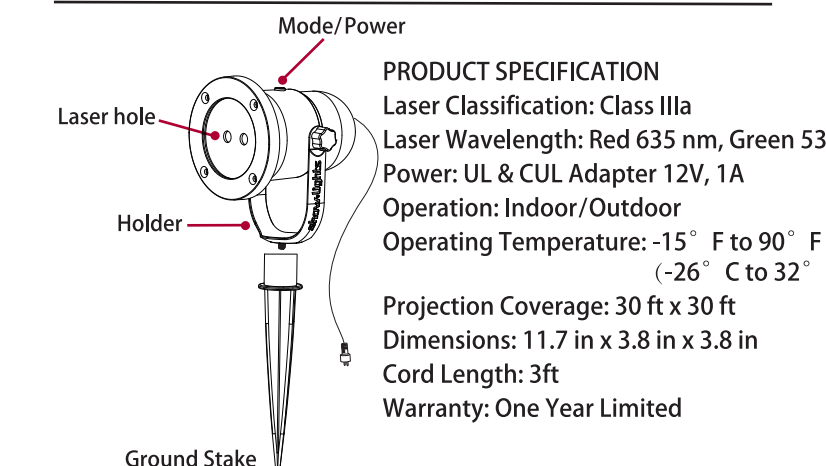
Made in China

PACKAGE CONTENTS



| PART | DESCRIPTION | QUANTITY |
|------|-----------------------------------|----------|
| A | Laser Light Projector With Holder | 1 |
| B | Ground Stake | 1 |
| C | Adapter | 1 |
| D | Remote | 1 |

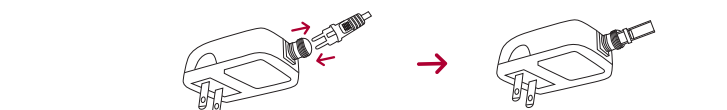
PRODUCT DESCRIPTION



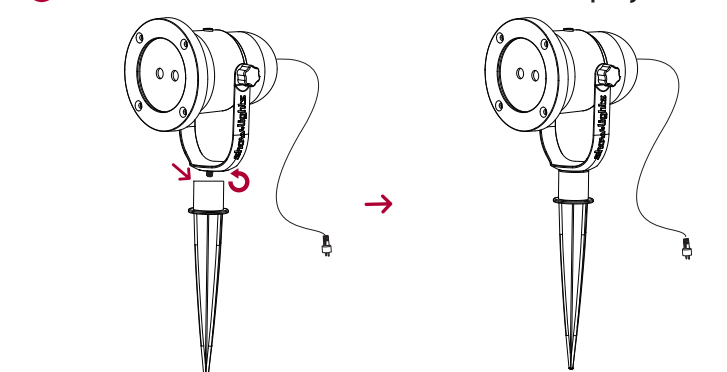
PRODUCT SPECIFICATION
 Laser Classification: Class IIIa
 Laser Wavelength: Red 635 nm, Green 532 nm
 Power: UL & CUL Adapter 12V, 1A
 Operation: Indoor/Outdoor
 Operating Temperature: -15° F to 90° F (-26° C to 32° C)
 Projection Coverage: 30 ft x 30 ft
 Dimensions: 11.7 in x 3.8 in x 3.8 in
 Cord Length: 3ft
 Warranty: One Year Limited

PRODUCT INSTRUCTIONS

1. Connect reverse-prevented adapter as figure shows.



2. Screw the stake to the holder to secure the projector.



MEMORY FUNCTION

Memory Function:
 When power on/turn on, the product would recover to the state before power off/turn off (including mode, color & motor)

PROMPT FUNCTION

Prompt Function: Red and green quick flash thrice.
 1. Turn off by button/remote.
 2. Remote timing related function button operation.
 3. Single Laser (Red or Green), press the remote related color button.
 4. When motor speed reach upper limit or lower limit.

REMOTE CONTROL

Remote Control Instructions

1. Remove insulating tape from the battery compartment before use. This remote is RF and receiving distance allowance is 8 meters.

2. is to turn on/off.

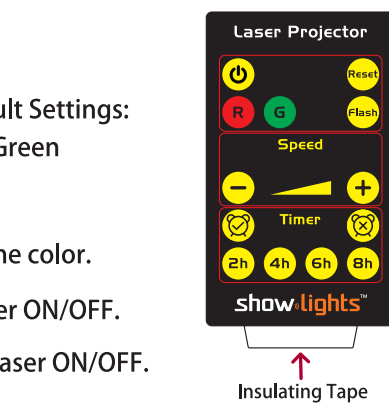
3. Resetting button, turn to Default Settings: Motor faster, steady on Red & Green 6h ON/18h OFF.

4. are the buttons to change the color.
 is the button to control red laser ON/OFF.
 is the button to control green laser ON/OFF.

5. Mode Switchover: Steady, flash.

6. are buttons to control light moving mode. There are four mode options: STATIC, SLOW, FASTER and FASTEST
 Motor Speed Down.
 Motor Speed Up.

7. Press the button to restart preset timer function
 To set timer:
 2h ON/22h OFF; 4h ON/20h OFF; 6h ON/18h OFF; 8h ON/16h OFF
 Press the button, show light laser projector will flash thrice and timer function is canceled.



REMOTE CONTROL

Remote Control Instructions

If the remote control does not work, check battery.

WARNING: This is not a toy and is not intended for use by children.

(A) Do not dispose of the battery in fire as the battery may leak and explode.

(B) Do not mix old and new batteries and not mix alkaline, standard (carbon-zinc), or rechargeable (nickel-cadmium) batteries.

(C) Exhausted batteries are to be removed from the product.

(D) Dispose of battery properly by following directions on battery.

(E) Use CR2025 battery only. Use of other batteries may damage remote control.

(F) Safe for indoor use.

(G) Do not expose the Remote Control to moisture.

MEMORY FUNCTION/PROMPT FUNCTION

Button Mode

1. When turn on the laser and short press the button to switchover to cycle the 6 patterns as bellow:

- Steady on Red
- Steady on Green
- Steady on Red & Green
- Red Flashing
- Green Flashing
- Red & Green Flashing

2. Press and hold the button to turn off under working state.

3. Short press the button to turn on under power off function, would recover to the mode before power off.

a. Connect the power adapter to the laser light projector. The adapter input voltage is AC120V.

b. Timer Function

1. Choose other timer function by remote.
2. Choose the button of to cancel the timer function.

c. Remote Battery Installation: Please refer to the simple diagram of the remote control on the back battery cover.

1. Slide battery cover off.
2. Insert a "CR2025" (3 volt) battery.

SAFETY INSTRUCTIONS

SAFETY ATTENTION

1. Turn off 30 minutes after working 6 hours to last the life time of product.

2. This product is mainly used for outdoor with waterproof ip65. It has excellent radiating ease. Put it far away from the flammable objects or liquids.

3. Please use show light laser projector power adapter to support the light. if you need to change a new adapter, please check the parameter of our adapter before you buy a new one.

CAUTION

1. Danger-laser radiation when open.

2. Avoid direct exposure to beam.

3. Avoid direct eye exposure.

4. Laser radiation-do not stare into beam or view directly with optical instruments.

5. The use of optical instruments with this product will increase eye hazard.

6. Use of controls or adjustments or performance of procedures other than those specified herein may result in hazardous radiation.

7. Do not point the show light laser projector to the airplane or up in the sky.

FEDERAL COMMUNICATIONS COMMISSION (FCC) STATEMENT

FCC Caution: Changes or modifications not expressly approved by the party responsible for compliance could void the user's authority to operate the equipment.

FCC ID: OXGAL66RGM

This device complies with part 15 of the FCC Rules. Operation is subject to the following two conditions: (1) This device may not cause harmful interference, and (2) this device must accept any interference received, including interference that may cause undesired operation.

For a Class B digital device or peripheral, the instructions furnished the user shall include the following or similar statement, placed in a prominent location in the text of the manual:

Note: This equipment has been tested and found to comply with the limits for a Class B digital device, pursuant to part 15 of the FCC Rules. These limits are designed to provide reasonable protection against harmful interference in a residential installation. This equipment generates, uses and can radiate radio frequency energy and, if not installed and used in accordance with the instructions, may cause harmful interference to radio communications. However, there is no guarantee that interference will not occur in a particular installation. If this equipment does cause harmful interference to radio or television reception, which can be determined by turning the equipment off and on, the user is encouraged to try to correct the interference by one or more of the following measures:

-Reorient or relocate the receiving antenna.
 -Increase the separation between the equipment and receiver.
 -Connect the equipment into an outlet on a circuit different from that to which the receiver is connected.
 -Consult the dealer or an experienced radio/TV technician for help.

INDUSTRY CANADA CONFORMITY STATEMENT

This device complies with Industry Canada licence-exempt RSS standard(s). Operation is subject to the following two conditions:
 (1) This device may not cause interference, and
 (2) This device must accept any interference, including interference that may cause undesired operation of the device.

CAN ICES-005(B)/NMB-005(B)



Scan & See Me!
www.ishowlights.com