

ZW1101 Door Window Sensor

FCC/IC

Federal Communications Commission (FCC) Statement

FCC Caution: Any changes or modifications not expressly approved by the party responsible for compliance could void the user's authority to operate this equipment.

This device complies with Part 15 of the FCC Rules. Operation is subject to the following two conditions: (1) This device may not cause harmful interference, and (2) this device must accept any interference received, including interference that may cause undesired operation.

NOTE: This equipment has been tested and found to comply with the limits for a Class B digital device, pursuant to Part 15 of the FCC Rules. These limits are designed to provide reasonable protection against harmful interference in a residential installation. This equipment generates, uses and can radiate radio frequency energy and, if not installed and used in accordance with the instructions, may cause harmful interference to radio communications. However, there is no guarantee that interference will not occur in a particular installation. If this equipment does cause harmful interference to radio or television reception, which can be determined by turning the equipment off and on, the user is encouraged to try to correct the interference by one or more of the following measures: Reorient or relocate the receiving antenna. Increase the separation between the equipment and receiver. Connect the equipment into an outlet on a circuit different from that to which the receiver is connected. Consult the dealer or an experienced radio/TV technician for help. This equipment should be installed and operated with minimum distance 20cm between the radiator and your body.

IC Caution:

This device complies with Industry Canada licence-exempt RSS standard(s). Operation is subject to the following two conditions: (1) this device may not cause interference, and (2) this device must accept any interference, including interference that may cause undesired operation of the device.

DECLARATION DE CONFORMITE D'INDUSTRIE CANADA

Ce périphérique a été testé et reconnu conforme aux limites spécifiées dans RSS-210.

Son utilisation est soumise aux deux conditions suivantes :

- (1) il ne doit pas provoquer d'interférences gênantes et
- (2) il doit tolérer les interférences reçues, notamment celles susceptibles d'en perturber le fonctionnement.



Door window sensor

WARRANTY

Show Home Products warrants this product to be free from manufacturing defects for a period of two years from the original date of consumer purchase. This warranty is limited to the repair or replacement of this product only and does not extend to consequential or incidental damage to other products that may be used with this product.

This warranty is in lieu of all other warranties, expressed or implied. Some states do not allow limitations on how long an implied warranty lasts or permit the exclusion or limitation of incidental or consequential damage, so the above limitations may not apply to you.

This warranty gives you specific rights, and you may also have other rights which vary from state to state. If the unit should prove defective within the warranty period.

WARNING

RISK OF FIRE
RISK OF ELECTRICAL SHOCK
RISK OF BURNS
CONTROLLING APPLIANCES:
EXERCISE EXTREME CAUTION WHEN USING Z-WAVE DEVICES TO CONTROL APPLIANCES. OPERATION OF THE Z-WAVE DEVICE MAY BE IN A DIFFERENT ROOM THAN THE CONTROLLED APPLIANCE, ALSO AN UNINTENTIONAL ACTIVATION MAY OCCUR IF THE WRONG BUTTON ON THE REMOTE IS PRESSED. Z-WAVE DEVICES MAY AUTOMATICALLY BE POWERED ON DUE TO TIMED EVENT PROGRAMMING. DEPENDING UPON THE APPLIANCE, THESE UNATTENDED OR UNINTENTIONAL OPERATIONS COULD POSSIBLY RESULT IN A HAZARDOUS CONDITION. FOR THESE REASONS, WE RECOMMEND DO NOT RETURN THIS PRODUCT TO THE STORE THE FOLLOWING:
DO NOT USE Z-WAVE DEVICES TO CONTROL ELECTRIC HEATERS OR ANY OTHER APPLIANCES WHICH MAY PRESENT A HAZARDOUS CONDITION DUE TO UNATTENDED OR UNINTENTIONAL OR AUTOMATIC POWER ON CONTROL.

SPECIFICATIONS

Model: ZW1101

Power supply: battery ER14250, 1/2AA, 3V.

Signal (Frequency): 908.42 MHz.

Operating Range: Up to 100 feet line of sight

Operating Temp.: -15°C~60°C (5°F ~140°F)

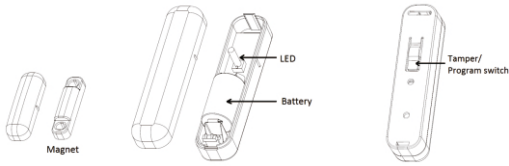
Wireless Controller and the closest Z-Wave receiver module.

Specifications subject to change without notice due to continuing product improvement

Website www.ishowlights.com

Product Introduction and description

Thanks for choosing the show home wireless door/window sensor of the home security device. This sensor is a Z-Wave™ enabled device (interoperable, two-way RF mesh networking technology) and is fully compatible with any Z-Wave™ enabled network. Every mains powered Z-Wave enabled device acts as a signal repeater and multiple devices result in more possible transmission routes which helps eliminate "RF dead-spots". Z-Wave™ enabled devices displaying the Z-Wave™ logo can also be used with it regardless of the manufacturer, and ours can also be used in other manufacturer's Z-Wave™ enabled networks. This sensor monitors door/window and send Z-Wave™ signal when door or window is opened and closed.



Operation

Notice: If you install the entire Z-Wave™ system for the first time, please refer to the installation guide of Z-Wave™ Interface Controller before installing ZW1101.

1. Unscrew the screw fastening the rear cover.
2. Slide the rear cover down.
3. Using the screws or adhesive tape to affix the rear cover on the frame along the opening edge of door / window.
4. Insert a CR123A battery into the battery compartment and LED will start to flash slowly, which means the sensor has not yet been added.
5. For adding to a network: Put the Z-Wave™ Interface Controller into adding mode, and following its instruction to add the ZW1101 to your controller. To get in the adding mode, the distance between sensor and controller is suggested to be in one meter. Press the program switch of ZW1101 for 1 second at least. The LED on the ZW1101 should go solid, if not, please try again. For removing from a network: Put the Z-Wave™ Interface Controller into removing mode, and following its instruction to delete the ZW1101 from your controller. Press the program switch of ZW1101 for 1 second at least to be removed. For "Association": removing the cover of the ZW1101 to get into the "Awake" mode, then put the Z-Wave™ Interface Controller into "Association", and following its instruction to associate the ZW1101 with other device. Close the cover back after "association" done, afterward the ZW1101 will get into "Sleep" mode for power saving. Support one association group (5 nodes). "Awake" mode: it is to leave the "Sleep" mode by removing the cover of ZW1101, to allow the Z-Wave™ Interface Controller to do "add", "remove", "Association" and to reply and receive the commands from controller.
6. Slide back the rear cover and screw fastening with the front cover, the LED should go off.
7. Fix the Magnet by using the adhesive tape or fixing screws, locate the Magnet close to the ZW1101 sensor the distance between these two devices should be in 1.9cm.
8. External Switch: If your window needs two sensors for fully monitoring. You could use an external switch to connect with the ZW1101 for extending detection. The ZW1101 has 2 normally closed contact terminals. These can be used for additional external switch wired contacts. The external switch will send an alarm report (type:01,level:11) by opening the window/door.

Package content:

ZW1101 Sensor-1pcs
Bracket for Contact Magnet-1pcs
Magnet-1pcs
Adhesive tape for Magnet /sensor-2pcs
CR14250 3.0V Battery-1pcs
Screws for bracket/ sensor-4pcs
Installation Operation manual-1pcs

Assemble

Step1. The magnet shall be fixed to close to the specific area, and the distance from sensor shall not be over 1.9cm.

Step2. Fixed with adhesive tap or Screws.



fig1

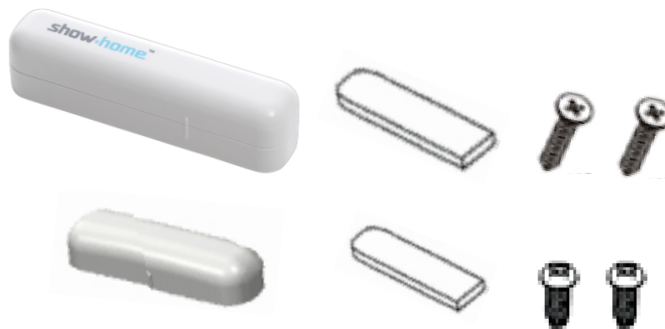


fig2