

Quick Start Guide

2 in 1 Tablet



NOTE:

- **Please charge 10 HOURS before turning on the device.**
- For Spanish users, please go to "Control Panel", then go to "Clock, Language, and Region", then go to "Language" to change from English to Spanish Language OSD.

10.1" Detachable Laptop (Windows)

To assure the product to work in best status please read the guide carefully before operation and keep it well for future use

The new 10.1" 2 in 1 Detachable Laptop MAGNUS III is the next-generation Laptop with Windows 10 . It features with 10.1" IPS High Resolution Screen (800 x 1280) and strong processors of Intel® Atom™ Processor Z8350 (Quad Core, 1.44GHz) CPU providing access to the web for news, weather, or local business info; downloading thousands of Apps from the Windows Store to tap your need, such as games, favorite movie clips, music, and videos. With and detachable dock keyboard MAGNUS III enables you to work with much more portability. With built-in bluetooth function you are able to connect to your bluetooth speaker system / bluetooth earphone to listen to music, or connect to a bluetooth keyboard for easy typing, and send files to another tablet or mobile phone with bluetooth. Equipped with memory of 64GB, you may store plenty of pictures, movies, and documents. Expansion storage is available via Micro Card Reader slot. MAGNUS III is your all-in-one laptop that you can't live without.

Notes

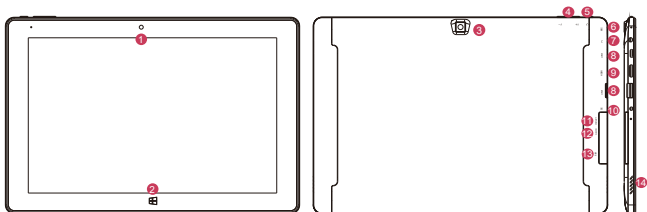
- * This product is highly electric. Do not dismantle.
- * Take necessary precautions to avoid dropping.
- * Store in a cool environment: avoid extreme temperatures, humidity, and dust. Keep product away from strong magnets and long-term exposure to the sun.
- * Clean the device by gently wiping the product with a damp cloth; the use of chemical cleaners is prohibited. Keep out of water.
- * When using headphones for long periods of time, be advised that high volume may cause permanent damage to hearing.
- * When using headphones, be mindful of your surroundings while traveling.
- * Only use permitted battery, charger and accessories. The use of any other type of product could damage the device and may be dangerous.
- * Please deal with waste machinery and accessories according to local environmental regulations.
- * If you have any questions about the product, please contact the store of purchase or iVIEW's customer service center directly.
- * Please follow the user's guide and backup your files. The company is not responsible for any data loss that may occur due to product damage.

Table of Contents

1. Product Overview	2
2. System Setup	3
2.1 Account Setup	3
3. Desktop Functions	4
3.1 Windows Start Menu	4
3.2 Basic Touch Screen Commands	5
3.3 Personalization	6
3.4 Action Center	8
3.5 Task View	8
3.6 Split-Screen	9
4. Additional Functions	9
4.1 4G Cellular	9
4.2 Sleep, Restart and Shut Down	10
4.3 Recovery	10
4.4 Bluetooth	12
4.5 Account Management	13
5. Storage Expansion	13
5.1 Micro SD Card	13
6. Product Features	14
7. Accessories	14

1. Appearance and Button

All view ID:

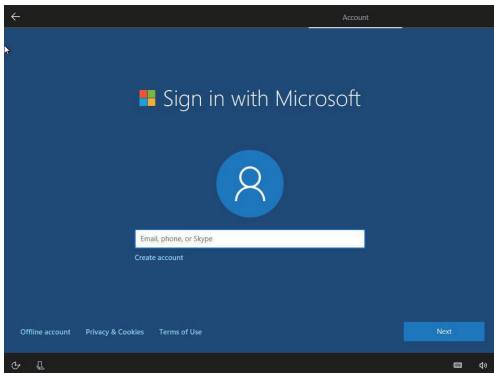


- ❶ Front Camera: Take photos, and record pictures.
- ❷ Home Button.
- ❸ Back Camera: Take photos, and record pictures.
- ❹ Volume- / Volume+: Lower / raise Volume.
- ❺ Power Button: Press it down to start or close the touch screen panel. You can also let the computer enter dormancy through this button or wake from the dormancy mode.
- ❻ MIC: Microphone.
- ❼ Earphone Jack: 3.5mm standard earphone jack can transmit the audio signals of Tablet PC to earphone.
- ❽ Micro USB Jack: You can use it to connect the external USB flash drive, USB flash drive via OTG cable.
- ❾ HDMI: HDMI video output.
- ❿ DC Jack: Connect the adapter for charging.
- ⓫ Reset.
- ⓬ Micro SD Card Slot: The built-in storage card reader slot supports Micro SD and Micro SDHC format.
- ⓭ Micro SIM Card Slot: Insert Micro SIM card to active 4G cellular function.
- ⓮ Loudspeaker: The built-in loudspeaker enables you to hear the sound without having to link additional device.

2. System Setup

Windows will automatically help you set up your internet connection and system preferences.

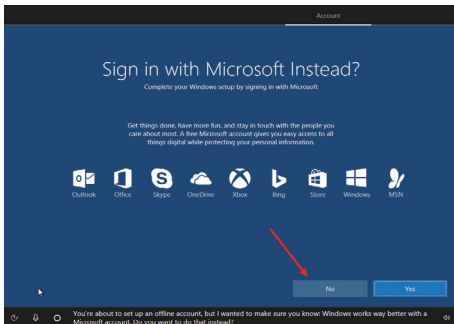
2.1 Account Setup



Once your network is set up, you'll be asked to set up an account. You can add an existing Microsoft account, or you can create one.

If you do not wish to create a Microsoft account at this time, you can select OFFLINE ACCOUNT near the bottom left-hand corner.


(NOTE: Some features, like the Microsoft store, will only be available using a Microsoft account.)



When creating an offline account, you'll be prompted with the screen above. Just select NO, and you'll be able to set up an offline user name and password.

3. Desktop Functions

3.1 Windows Start Menu

You can access the Windows Start Menu by clicking on the Windows Icon in the bottom-left corner of the screen, or by pressing the  key on your keyboard.

Some apps and functions will only be available using a Microsoft Account.



3.2 Basic Touch Screen Commands

Task View



Slide to the right from the left side of the screen to open Task View.

Action Center



Slide to the left from the right side of the screen to open the action center.

Zoom Out



To zoom out on an image or web page, place two fingers on the screen and pinch inwards.

Zoom In



To zoom in on an image or web page, place two fingers on the screen and pinch outwards.

Scroll up



In any menu or page, place finger and slide downwards to scroll to the top of the menu or page.

Drag & Drop



Tap on an App or File with your finger and slide sideways to move that file. Remove finger to place file in new location.

Scroll Down



In any menu or page, place finger and slide upwards to scroll to the bottom the menu or page.

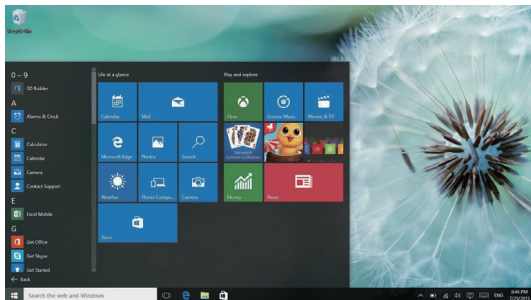
Context Menu



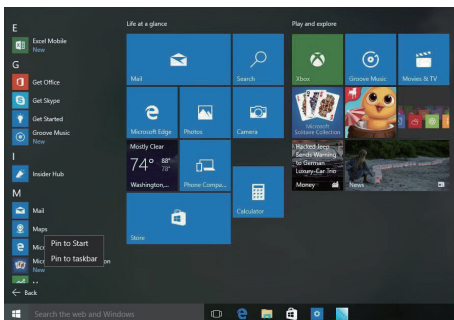
Place your finger on an app or anywhere on the screen and hold for 2 seconds, then release. Just like a right-click on a mouse, this will open a context menu.



3.3 Personalization

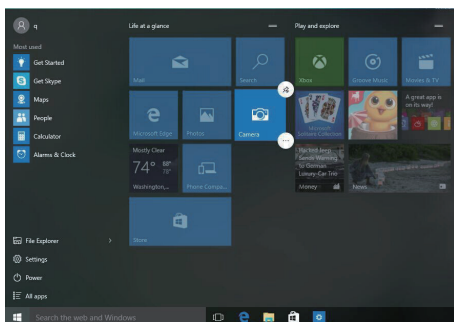
Your device comes with an assortment of pre-installed applications. You can view them all in the start menu, under "All Apps". You can also pin your favorite applications to the start menu or the taskbar for quick access.



If you would like to pin apps to the start menu, right-click, or tap & hold on an application until a menu pops up. From there, you can select “Pin to Start” or select the “More” option if you would like to pin the application to the taskbar.

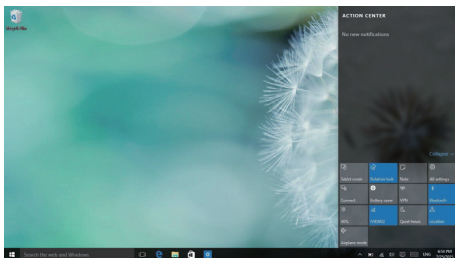


You can also unpin apps that you don't use, by right-clicking and selecting “Unpin”. If you're using the touch screen, tap and hold the pinned application for about one second, click  to unpin it from the Start Menu or Taskbar. You can also click  for additional options.




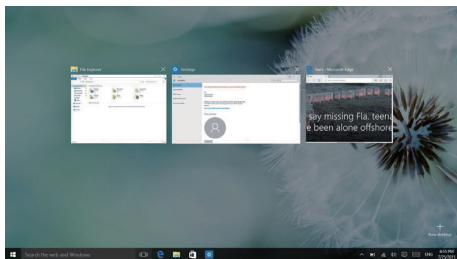
3.4 Action center

From the right side of the screen, place and slide your finger to the left to open the Action Center. Here, you are able to monitor your device's status, access settings, connect to a Bluetooth device, etc.



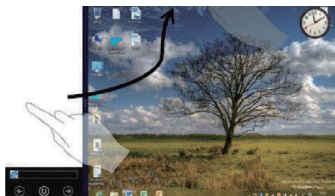
3.5 Task View

From the left side of the screen, place and slide your finger to the right to open Task View. This will display all applications currently running on your device. Click  on an application to close it.

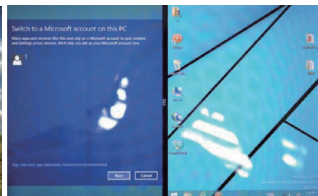


3.6 Split-Screen

If you want to split-screen two applications at the same time, open the two apps you want to use, making sure one of them is full screen. Tap and hold to drag an app to the left side of the screen (Figure 1) to dock it. Select the second app to open on the right side. In (Figure 2), you can press and slide the bar in the center to partition screen space between the two apps.



(Figure 1)

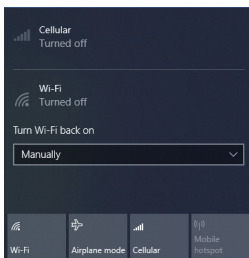


(Figure 2)

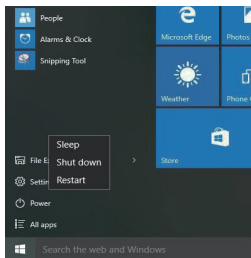
4. Additional Functions

4.1 4G Cellular

The device support 4G cellular function to connect to the Internet. Before insert the micro SIM card, turn off the device. Then, turn on device, from the right side of the screen, place and slide your finger to the left to open the Action Center, click Cellular to activate the 4G cellular function.



4.2 Sleep, Restart and Shut Down



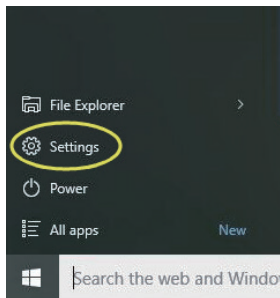
• Forced Reset / Shutdown

If the tablet freezes, you can press and hold the Power button for 8~12 seconds. The tablet will shutdown automatically.

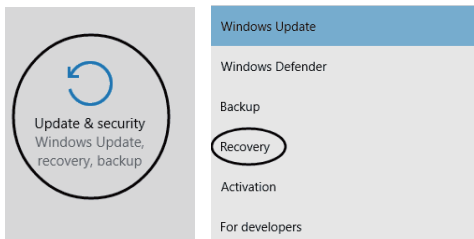
4.3 Recovery

When your device is not performing well, you can perform a Windows Reset. (NOTE: This WILL erase all your data and revert back to factory settings)

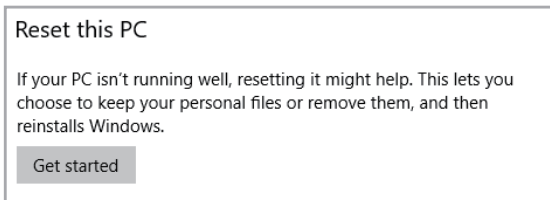
First, click on the start icon, or press the  key on your keyboard. This will bring up the start menu. Select SETTINGS.



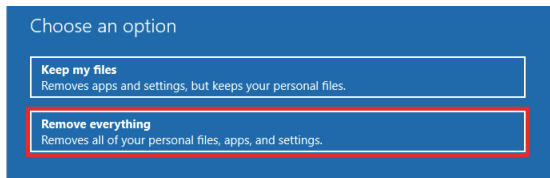
You'll then be brought to the SETTINGS Window. At the bottom, select UPDATE AND SECURITY, followed by RECOVERY.



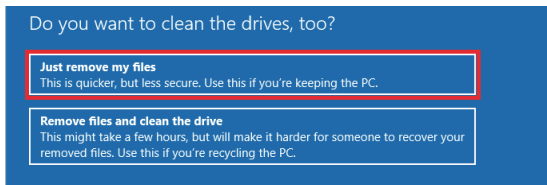
Select the Get Started Button underneath RESET THIS PC.



You will be prompted TWICE. First, select, REMOVE EVERYTHING.





When Prompted again, select JUST REMOVE MY FILES.

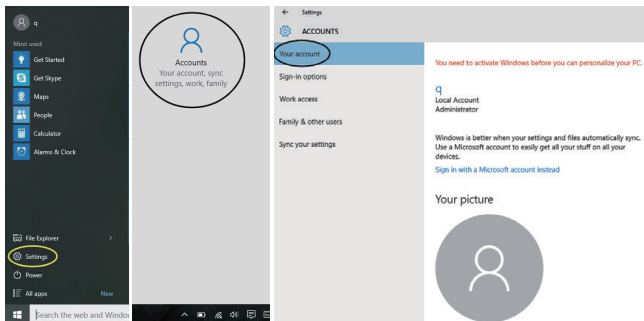


Make sure your device is plugged in, and select RESET. The reset process will take roughly an hour.

4.4 Bluetooth

- a) Turn on Bluetooth by opening the action center and tapping on the Bluetooth Icon. To pair a device, tap and hold the Bluetooth icon until the option "Go to Settings" pops up. Select it. Your 1760AIO will automatically look for devices to pair.
- b) Sending Files: To send files, click on the Bluetooth  icon on the lower right corner of the desktop. Click "Send a File" and follow the instructions provided by Windows.
- c) Receiving Files: To receive files, click on the Bluetooth  icon on the lower right corner of the desktop. Click "Receive a File" and Windows will scan for Bluetooth connections.

4.5 Account management



Account Options:

Open the Start Menu by clicking on the Windows icon at the bottom-left corner of the screen. Select “Settings” followed by “Accounts.” On the right side of the window, you can create an offline account or set up a Microsoft Account for your device. Under “Sign-In Options”, you can change your password or add additional verification methods (PIN number, picture, etc.)

You can also select “Family & Other Users” to add additional users to your device.

5. Storage Expansion

The device comes with 64GB of internal storage. However, you can use the following method to further expand the storage of your device.

5.1 Micro SD Card

You can expand your device's storage space by inserting a Micro SD Card into the CARD slot of your device. Make sure to firmly push the SD Card into the slot until it clicks. The device supports Micro SD cards up to 128GB.

6. Product Features

- * Screen: 10.1" Capacitive Touch Screen, 800 x 1280 IPS High Resolution
- * Processor: Intel® Atom™ Processor Z8350, Quad Core, 1.44GHz
- * OS: Windows 10 Home
- * RAM: 4GB
- * Memory: 64GB
- * Wireless Connection: WIFI 802.11 b/g/n
- * Build in Bluetooth 4.2
- * Support Dual Camera: Front 2.0MP, Rear 5.0MP
- * Support Skype Video Call
- * Support 1080P Full HD Video
- * I/O Port : Micro USB
- * Card Slot: Micro SD Card (Max: 128GB)
- * Audio Output: Stereo Speaker (8Ω 1.0w) / 3.5MM Stereo Headphone Jack
- * Windows Store, Internet Browser, Calendar, Calculator, E-mail
- * Picture Viewing, Music / Video Playback, Games
- * Supports Multi Languages
- * Battery: Built in 6000 mAh / 3.7V Li-ion, Rechargeable
- * Power Source: 5V $\overline{\text{---}}$ 2A

7. Accessories

Below items are included in your package:

- * Complete Device
- * Power Adapter
- * OTG Cable
- * Earphone
- * USB Mouse
- * Sleeve Bag
- * User Manual
- * Detachable Dock Keyboard

Basic warranty Statement

This product is warranted to the original purchaser ONLY, to be free from defects in materials and workmanship under normal use, for **ninety (90) DAYS** (parts and labor) and **one (1) YEAR** (parts only) from the date of original purchase. We agree under the warranty period to replace product if it is determined to be defective at "No Charge" This limited warranty does not cover any loss or damages that occur as result of:

- Cosmetic damage.
- Shipping or improper installation or maintenance.
- Misuse.
- Neglect.
- Any cause other than ordinary commercial or industrial application.
- Adjustment by non-authorized source or any of the products firmware or hardware that you or any third party have modified or altered.
- Improper environment.
- Excessive or inadequate heating or air conditioning or electrical power failures, surges. connection to improper voltage supply or settings or other irregularities.
- Accidents, acts of God.

In the United States and Canada contact Customer Service at www.ivewus.com

*** Please note that in order to have your merchandise repaired and replaced by warranty, you must contact our customer service representatives by email, and get RMA number.**

To obtain factory service, the original purchaser MUST present the following:

1. A sales receipt/proof of purchase indicating date of purchase.
2. Your Name. Place of Purchase. Address. Unit Model.and Description of Problem.
3. Send the unit pre-paid to the address below in the original packaging or reasonable substitute to prevent damage. **No return will be shipped back to a PO BOX.**
4. All of the accessories that came with the product package must be sent along with the main unit.
5. Please include your check or money order in the amount of **\$30.00** to cover handling and return shipping charges We will not be responsible for delays or unprocessed claims resulting from purchaser's failure to provide any or all of the necessary information.
6. There is Additional Shipping Charge for areas outside of United States. For shipping charge please consult with our customer service.

FCC Statement

Changes or modifications not expressly approved by the party responsible for compliance could void the user's authority to operate the equipment.

This equipment has been tested and found to comply with the limits for a Class B digital device, pursuant to Part 15 of the FCC Rules. These limits are designed to provide reasonable protection against harmful interference in a residential installation. This equipment generates uses and can radiate radio frequency energy and, if not installed and used in accordance with the instructions, may cause harmful interference to radio communications.

However, there is no guarantee that interference will not occur in a particular installation. If this equipment does cause harmful interference to radio or television reception, which can be determined by turning the equipment off and on, the user is encouraged to try to correct the interference by one or more of the following measures:

- Reorient or relocate the receiving antenna.
 - Increase the separation between the equipment and receiver.
 - Connect the equipment into an outlet on a circuit different from that to which the receiver is connected.
 - Consult the dealer or an experienced radio/TV technician for help
- This device complies with part 15 of the FCC rules. Operation is subject to the following two conditions (1) this device may not cause harmful interference, and (2) this device must accept any interference received, including interference that may cause undesired operation.

SAR Information Statement

Your 2 in 1 Tablet is a radio transmitter and receiver. It is designed and manufactured not to exceed the emission limits for exposure to radiofrequency (RF) energy set by the Federal Communications Commission of the U.S. Government. These limits are part of comprehensive guidelines and establish permitted levels of RF energy for the general population. The guidelines are based on standards that were developed by independent scientific organizations through periodic and thorough evaluation of scientific studies. The standards include a substantial safety margin designed to assure the safety of all persons, regardless of age and health. The exposure standard for wireless mobile phones employs a unit of measurement known as the Specific Absorption Rate, or SAR. The SAR limit set by the FCC is 1.6 W/kg. * Tests for SAR are conducted with the phone transmitting at its highest certified power level in all tested frequency bands. Although the SAR is determined

at the highest certified power level, the actual SAR level of the phone while operating can be well below the maximum value. This is because the phone is designed to operate at multiple power levels so as to use only the power required to reach the network. In general, the closer you are to a wireless base station antenna, the lower the power output. Before a phone model is available for sale to the public, it must be tested and certified to the FCC that it does not exceed the limit established by the government adopted requirement for safe exposure. The tests are performed in positions and locations (e.g., at the ear and worn on the body) as required by the FCC for each model. The highest SAR value for this model phone when worn on the body, as described in this user guide, is 0.77 W/Kg (Body-worn measurements differ among phone models, depending upon available accessories and FCC requirements). The maximum scaled SAR in hotspot mode is 0.78 W/Kg. While there may be differences between the SAR levels of various phones and at various positions, they all meet the government requirement for safe exposure. The FCC has granted an Equipment Authorization for this model phone with all reported SAR levels evaluated as in compliance with the FCC RF exposure guidelines. SAR information on this model phone is on file with the FCC and can be found under the Display Grant section of <http://www.fcc.gov/oet/fccid> after searching on FCC ID: 2AAWC-MAGNUSIII Additional information on Specific Absorption Rates (SAR) can be found on the Cellular Telecommunications Industry Association (CTIA) web-site at <http://www.wow-com.com>. * In the United States and Canada, the SAR limit for mobile phones used by the public is 1.6 watts/kg (W/kg) averaged over one gram of tissue. The standard incorporates a substantial margin of safety to give additional protection for the public and to account for any variations in measurements. The SAR test distance is 0mm.

***Please review your user
guide carefully before
using this product.***

*Additional troubleshooting information
can be found on the web at:*

***www.iviewus.com and click on “Support”
or email us at support@iviewus.com***