



# Blue Manager User Manual

*Your Wireless Connection*

Version 3.1

Nov. 2003



---

# Table of Contents

<b>TABLE OF CONTENTS .....</b>	<b>2</b>
<b>INTRODUCTION .....</b>	<b>4</b>
<b>OVERVIEW.....</b>	<b>5</b>
<b>INSTALLATION.....</b>	<b>6</b>
<b>Installing Blue Manager.....</b>	<b>6</b>
<b>Installing the USB Dongle.....</b>	<b>7</b>
<b>Installing the PC Card .....</b>	<b>7</b>
<b>USING BLUE MANAGER .....</b>	<b>8</b>
Starting Blue Manager for the First Time .....	8
Overview .....	8
Discovering Devices.....	9
Defining Your Settings.....	9
Exchanging Business Cards .....	12
Send File To ... ..	13
Browse Folders.....	14
Display Services .....	14
Trust Devices.....	15
Properties.....	16
Paste.....	16
Delete.....	17
Disconnect.....	17
New Folder.....	18
Get .....	18
Copy .....	18
File Properties.....	19
Find Device .....	19
Auto Refresh.....	18
Performing Dial-up Networking and LAN Access.....	19
Bluetooth Headset with Blue Manager.....	19
Windigo BT Audio.....	20
<b>Commonly Asked Questions .....</b>	<b>21</b>
<b>TROUBLESHOOTING .....</b>	<b>22</b>
<b>General .....</b>	<b>22</b>
<b>Exchange Business Cards .....</b>	<b>22</b>
<b>Send File To ... ..</b>	<b>22</b>
<b>Browse Folders .....</b>	<b>22</b>
<b>Display Services .....</b>	<b>22</b>

---

<b>Trust Devices.....</b>	<b>23</b>
<b>Properties... ..</b>	<b>23</b>
<b>Paste.....</b>	<b>23</b>
<b>Delete .....</b>	<b>23</b>
<b>New Folder... ..</b>	<b>23</b>
<b>Get.....</b>	<b>23</b>

## **Federal Communications Commission (FCC) Statement**

15.21

You are cautioned that changes or modifications not expressly approved by the part responsible for compliance could void the user' s authority to operate the equipment.

15.105(b)

This equipment has been tested and found to comply with the limits for a Class B digital device, pursuant to part 15 of the FCC rules. These limits are designed to provide reasonable protection against harmful interference in a residential installation. This equipment generates, uses and can radiate radio frequency energy and, if not installed and used in accordance with the instructions, may cause harmful interference to radio communications. However, there is no guarantee that interference will not occur in a particular installation. If this equipment does cause harmful interference to radio or television reception, which can be determined by turning the equipment off and on, the user is encouraged to try to correct the interference by one or more of the following measures:

- Reorient or relocate the receiving antenna.
- Increase the separation between the equipment and receiver.
- Connect the equipment into an outlet on a circuit different from that to which the receiver is connected.
- Consult the dealer or an experienced radio/TV technician for help.

You are cautioned that changes or modifications not expressly approved by the party responsible for compliance could void your authority to operate the equipment.

### **FCC RF Radiation Exposure Statement:**

This equipment complies with FCC radiation exposure limits set forth for an uncontrolled environment. End users must follow the specific operating instructions for satisfying RF exposure compliance. This transmitter must not be co-located or operating in conjunction with any other antenna or transmitter.

---

# Introduction

Congratulations on your Bluetooth product purchase. With Bluetooth, you will be able to wirelessly transfer electronic data seamlessly between Bluetooth-equipped devices anytime and anywhere you need. Your Bluetooth product comes included with XTNDConnect Blue Manager® software from Windigo Systems. Blue Manager is a powerful software program suite that manages the electronic data transfer between Bluetooth-enabled devices. The following pages will introduce you to Blue Manager and explain how you can use this powerful software program to maximize the benefits of Bluetooth technology.

---

# Overview

Blue Manager is a software program that enables Bluetooth-equipped hardware to operate under a variety of different operating systems. Blue Manager currently supports PC computers running under the Windows 98 SE, Windows ME, Windows 2000 and Windows XP operating system. With Blue Manager, you will be able to:

- Find and view in-range Bluetooth devices such as PCs, PDAs, cell phones, access points, modems and other Bluetooth-enabled devices
- Transfer and receive files from remote devices
- Browse shared folders on remote devices
- Perform Dial-up Networking by connecting to Bluetooth-enabled cell phones and modems
- Gain access to local area networks (LANs) by connecting to Bluetooth-enabled access points
- Utilize serial-based legacy applications through virtual communication ports

The Blue Manager software has been designed for functionality and ease of use. Windigo Systems has developed a software application that is both powerful in function, but also very simple and straightforward to use. Blue Manager is the only application tool you will need to take advantage of Bluetooth technology.

This instruction manual provides a general overview of the Blue Manager software as well as instructions on how to use the most common features of Blue Manager. For information on more advanced features of Blue Manager such as LAN access and faxing, please refer to the Help menu in the Blue Manager program.

---

# Installation

Blue Manager currently only supports PCs running under Windows 98 Second Edition, Windows Millennium Edition, Windows 2000 or Windows XP operating systems. Please verify that your computer is operating one of these Windows operating systems before proceeding with the installation process. If your computer is not currently running one of the above Windows operating systems, please contact Windigo to find out if new drivers have been released for your operating system.

The minimum system requirements for the development machine are:

- 75 MB of free hard disk space for full installation
- Windows 98 SE, ME, 2000 or XP.

*\*Please refer to the accompanying Release Notes for known limitations of these products.*

Installation of Blue Manager onto your computer system is a simple process. Please follow the instructions below to install Blue Manager and the Bluetooth USB dongle onto your PC.

## ***Installing Blue Manager***

**Note: Please don't plug in the hardware just yet till the software is successfully installed.**

1. Close all application programs running on your computer before beginning the installation process. The installation process may fail if the computer is running other application programs during the installation of Blue Manager.
2. Insert the Blue Manager installation CD into your CD-ROM drive. The installation program should begin automatically. If the installation program fails to load up automatically, go to Windows Explorer and open the Blue Manager file directory from your CD-ROM. Double click on the Blue Manager icon and then the Setup icon to manually start the installation process.
3. The Blue Manager installation process should launch and bring up a blue installation screen. Once the page has fully loaded, there should be four buttons on the left hand side of the screen. Click on the Installation button to continue with the installation process.
4. The rest of the installation process is completely automated. The program will install the Blue Manager files into a newly created **Extended Systems** directory in your computer's Programs directory. *Under Windows 2000/XP, the modems with Bluetooth DUN COM port, Bluetooth LAN COM port Bluetooth Fax COM port and Bluetooth Serial COM port will be added automatically during the installation; after Blue Manager's being installed, there are two connections will be created: "Bluetooth Dial-up Connection" and "Bluetooth LAN connection Client".*
5. Once the installation process is complete, a window prompt will ask if you would like to restart your computer. Click yes to complete installation of Blue Manager. Once the computer has restarted, take out the Blue Manager installation disk from your CD-ROM.

**Note: Under Windows 98 SE or Windows ME, the installation program will install DCOM first; for other OS such like Windows 2000/XP, Blue Manager will be installed directly.**

---

Blue Manager supports both PC card and USB dongle, this feature does bring users the biggest convenience, below is the instruction about how to install USB dongle and PC Card.

### ***Installing the USB Dongle***

1. Once the Blue Manager installation process has been completed and the computer has restarted, plug the Bluetooth USB dongle into an available USB port on your computer.
2. Your computer should automatically detect the Bluetooth USB dongle and begin installing the necessary device drivers on your computer. The installation process will create some virtual COM ports or modem on your computer to support the Bluetooth USB device.
3. When the USB driver installation process is complete, you can begin using Blue Manager by clicking on the XTNDConnect Blue Manager shortcut on your PC's desktop. This will launch the Blue Manager application.

### ***Installing the PC Card***

1. Once the Blue Manager installation process has been completed and the computer has restarted, plug the Bluetooth USB dongle into the available slot on your computer;
2. Your computer should automatically detect the Bluetooth PC Card and find the necessary device drivers on your computer. The installation process will create some virtual COM ports or modem on your computer to support the Bluetooth device.
3. When the PC Card driver installation process is complete, you can begin using Blue Manager by clicking on the XTNDConnect Blue Manager shortcut on your PC's desktop. This will launch the Blue Manager application.

**Note: With Windows98, after creating the COM ports, the computer will has 6 ports, which are LAN client/host, DUN client/host, Serial and FAX; if the Operating System is Windows2000/XP, there are only 4 ports will be created, they are LAN, DUN, Serial and FAX.**

---

# Using Blue Manager

## *Starting Blue Manager for the First Time*

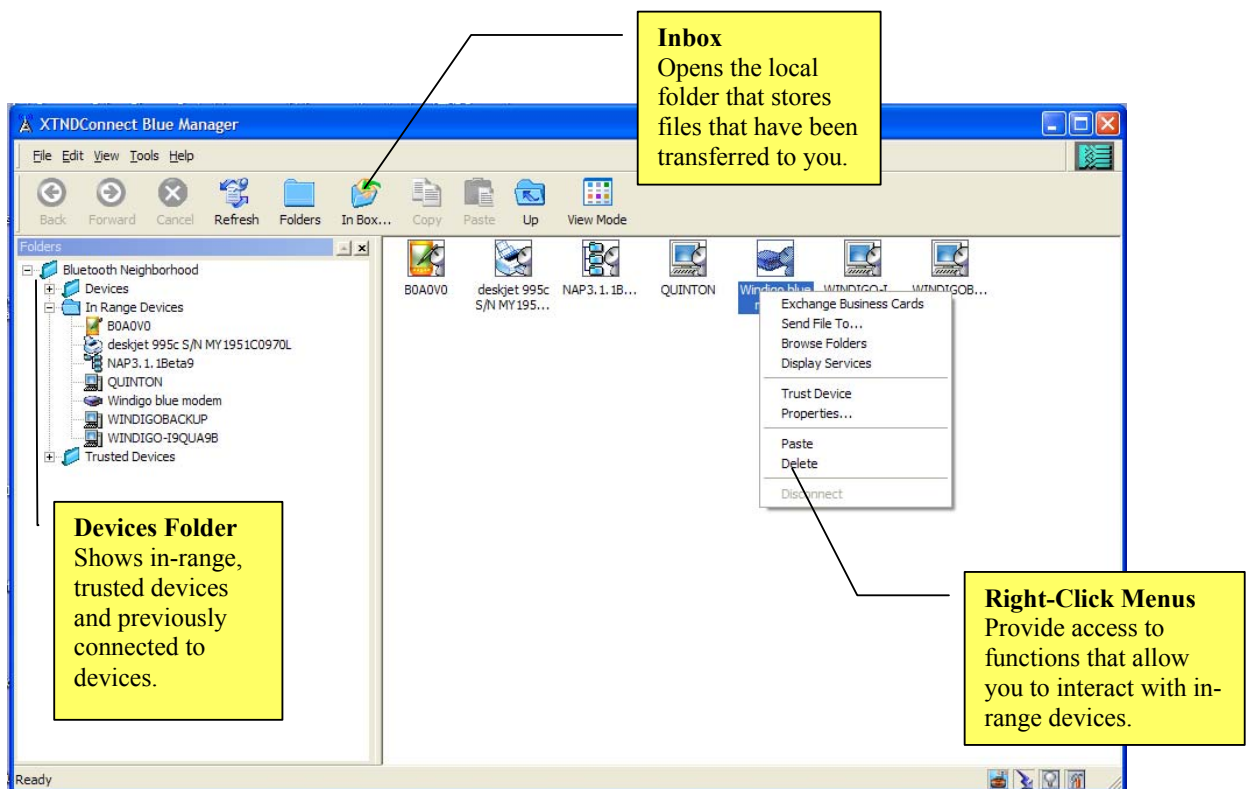
Start Blue Manager by clicking on the Blue Manager application icon located on your desktop. This will simultaneously launch the application. Afterwards, you should see a Bluetooth icon in your system tray and the Blue Manager application. By default, Blue Manager will perform a device inquiry at launch. This setting, as well as several others, can be changed by going to **Tools/ Options.../Settings**.

To view the directory tree, click on the **Folders** toolbar. This setting will remain persistent the next time you open and close the application. The directory tree gives you a starting point for viewing and interacting with remote devices.

## Application Tour

### *Overview*

The following screen shot provides a quick overview of Blue Manager. More information on specific features and capabilities can be found in the application's Help menu.



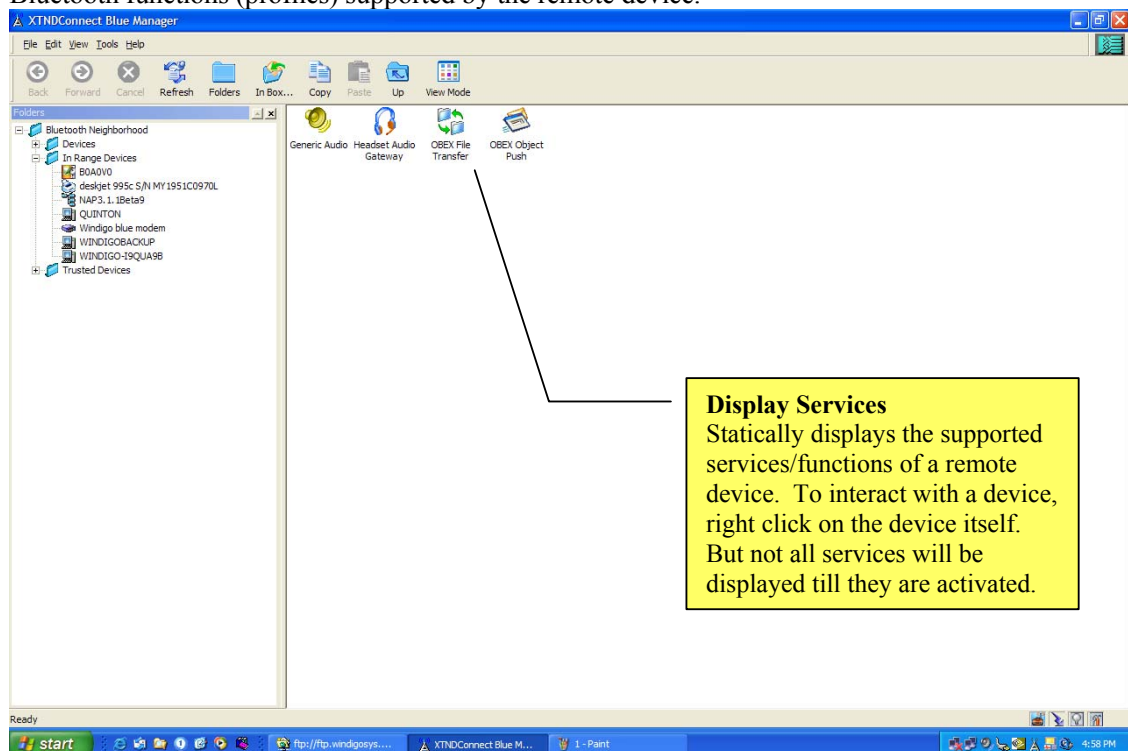


---

### ***Discovering Devices***

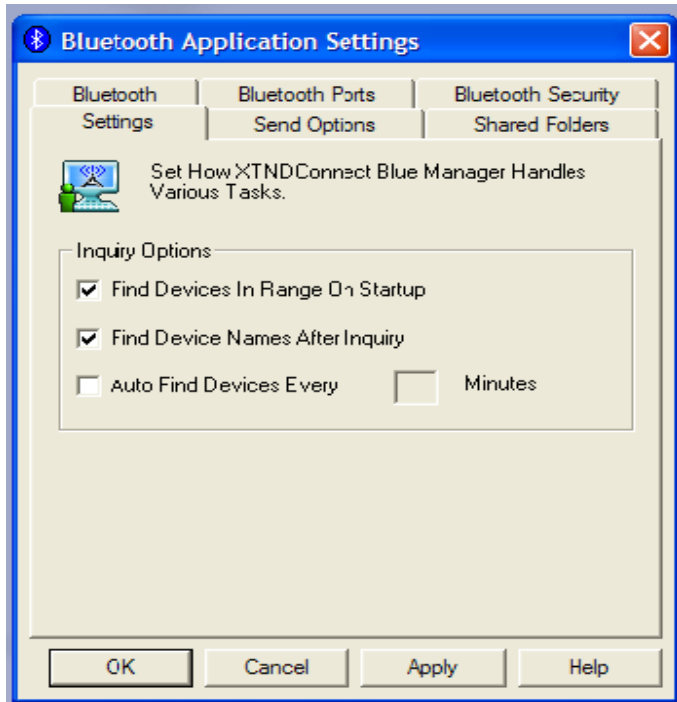
The default setting for Blue Manager is to perform a device inquiry each time the application is started. To change this setting, go to **Tools/Options/Settings** and uncheck **Find Devices In Range On Startup**. To find devices after the application is open, click on the **Refresh** toolbar icon and Blue Manager will make another general inquiry.

To learn more about a remote device's capabilities, you can view its supported Bluetooth services by right clicking on the device and selecting **Display Services**. This command will display the Bluetooth functions (profiles) supported by the remote device.



### ***Defining Your Settings***

To change settings within Blue Manager, go to **Tools/Options/Settings** and the application will display a dialogue box with multiple tabs for customizing your settings. With the Application Settings you can:



**Bluetooth** - Change friendly name, device type and view radio address. In the area 'Computer Name', type in the name that you want your PC identified to other computers as.

**Bluetooth Ports** - View the Com port assignments of the virtual communication ports.

**Bluetooth Security** - Change security setting from no security to complete security. Specify which level of security you require here.

**Settings** - Change inquiry options to find other Bluetooth devices.

**Send Options** – Specify the folder location that you want your files kept during file exchanges with other Bluetooth devices. Create your business card to send to other Bluetooth devices by clicking on the Edit button under 'My Business Card' and entering your contact information.

**Shared Folders** - Establish which local folders you want to make available for remote Bluetooth users to access.

## Buttons

### Exit Button

In the version 2.0 or higher, the Exit button will directly close the application and the software is still running in the background. There is an icon will appear on the right bottom of Windows in the system tray, if user wants to close this application, just right click this icon and select Exit.

### Folders Button

The Show/Hide Folders Pane button will open a Folders navigation window adjacent to the folders display window. This will give a split screen effect that will allow for simple navigation

---

through folders. The Show/Hide Folders Pane function is also found in the main menu under View.

**Inbox Button** 

The Inbox button will take you directly to your Bluetooth Inbox folder. This folder will open within a standard Windows Explorer application. The Inbox function is also found in the main menu under File.

**Paste Button** 

The Paste button will cause the file/s or folder/s that are on the clipboard to be sent to the Device or folder that is currently selected.

**Copy Button** 

The Copy button will put the files or folders selected onto a clipboard so that they can be later pasted to a new location (for example pasted to a different folder where they would then be sent).

**Cancel Button** 

The Cancel button allows a user to stop an operation that is currently being performed. For operations that cannot be canceled, the cancel button will be disabled (it will be grayed instead of full color, and it won't be selectable).

**Back Button** 

The Back and Forward buttons will navigate through folders that have been accessed by the user. If the operations are placed on a line, then the Forward button allows a user to go “forward” to an operation that has been completed. The Back button allows a user to go “back” to an operation that was completed.

**Forward Button** 

The Back and Forward buttons will navigate through folders that have been accessed by the user. If the operations are placed on a line, then the Forward button allows a user to go “forward” to an operation that has been completed. The Back button allows a user to go “back” to an operation that was completed.

**Up Button** 

The Up button is used in folder navigation and will assist in moving you directly to previous folders that you have opened.

**View Button** 

The View button is a quick way to get to the view options that are available in Blue Manager. It will open a menu where you may select the view that you prefer. In any view that you select, an icon of the device type will appear that will be associated with the devices that Blue Manager senses. A green light next to this icon indicates that the device is in range and information can be obtained from it (via a service inquiry or connection attempt).

---

## Refresh Button



The Refresh button will assess the devices in range and their status. The Extended Systems logo located on the top right of the main screen will rotate while Blue Manager is refreshing or otherwise busy.

## Functions

### *Exchanging Business Cards*

The Exchange Business Cards menu option involves trading vCards between two devices. First, the local device's default vCard is sent over to the selected remote device's inbox. After your default vCard has been successfully transmitted, then the remote device's default vCard is transferred into your inbox.

If either side does not have a default vCard present in the set location, then the exchange will fail. NOTE: The default vcard's name and location is set under the menu item **Tools, Options, Send Options**.

When Blue Manager is first installed, the default vcard name and location is root:\btinbox\username.vcf (for example: c:\btinbox\joec.vcf ). However, a default vCard is NOT created for you, and so the Exchange Business Cards option WILL FAIL until you change the default to a vCard that exists or until you create a vCard with the default name and location.

How To Exchange Business Cards:

1. Select a device with which you would like to exchange vCards.
2. Select the **Exchange Business Cards** menu option from any of these locations:
  - a. Select a device with the mouse and then select **File, Exchange Business Cards**.
  - b. Right-click on the device in the Tree View and select **Exchange Business Cards**.
  - c. Right-click on the device in the List View and select **Exchange Business Cards**.

---

### ***Send File To ...***

The Send File To menu option involves transmitting a file from your local device to a remote device. If a folder on the remote device is not open, then the file will be sent to the inbox on the remote device. If the file is sent to a particular folder, then after the send has successfully completed, the view of the folder contents on the local device will be updated to include the new file in the List View.

#### How To Send A File

1. Select a device to which you would like to send a file. If you have not currently browsed into any folders on the device (you will see folders and files in your List View and Tree View), then the file will be sent to the remote device's default inbox.
2. Select the **Send File To...** menu option from any of these locations:
  - Select a device with the mouse and then select **File, Send File To....**
  - Right-click on the device in the Tree View and select **Send File To....**
  - Right-click on the device in the List View and select **Send File To....**

If you have currently browsed into a folder on the device (you will see folders and files in your List View and Tree View), then the file will be sent to the selected location.

- Select a folder with the mouse and then select **File, Send**.
- Right-click on the folder in the Tree View and select **Send**.
- Right-click on a folder or file in the List View and select **Send**.

There are other methods for sending single or multiple files to the remote device.

- While selecting files from the file chooser (dialog box showing files on your local machine after selecting **Send** or **Send File To...**), hold down the control key (**Ctrl**) while selecting files with the mouse. Multiple files can be highlighted, and those files will be sent to the remote device.
- Select a file, multiple files, or a folder from the file chooser or another location such as Windows Explorer, right-click, and select **Cut** or **Copy**. Right-click on a folder or device in the XTNDConnect Blue Manger (Tree View or List View) and select **Paste**. The selected file/s will be sent to the remote device.
- Select a file, multiple files, or a folder from something like the Desktop or Windows Explorer and drag them onto the desired device or into a folder that has been browsed.

NOTE: After the send is complete, the List View should be updated to display the file or files that were transmitted.

---

## ***Browse Folders***

The Browse Folders option involves viewing the files and folders that are shared on a remote device that supports File Transfer. After the first folder has been returned, the folder will appear in the Tree View while the contents of the folder will be displayed in the List View. To browse further into the tree, either click the folder in the Tree View, or right-click in the List View and select **Browse**.

### How To Browse For Folders

1. Select a device whose shared files and folders you would like to see.
2. Select the **Browse** menu option from any of these locations:
  - Select the device and then select **File, Browse**.
  - Right-click on the device in the Tree View and select **Browse Folders**.
  - Right-click on the device in the List View and select **Browse Folders**.

If you have already displayed the shared folders, then the options for browsing further into the tree change.

- Select the folder and then select **File, Browse**.
- In the Tree View left-click on the folder whose files you want to see.
- Right-click on a folder in the Tree View and select **Browse**.
- Right-click on a folder in the List View and select **Browse**.

## ***Display Services***

The Display Services option checks the remote device to see what services it has available for the local device. In addition, if the remote device has a name, then the name will be displayed during this process.

Common Services supported by Blue Manager:

- Dialup Networking
- LAN Access Using PPP
- OBEX File Transfer
- OBEX Object Push
- Serial Port
- Generic Audio
- Headset Audio Gateway
- Fax
- Generic Telephony
- Headset Audio Gateway

Other Services (not yet fully supported through Blue Manager):

- Cordless Telephony
- Generic File Transfer
- Generic Networking
- Intercom
- IrMC Sync

- 
- IrMC Sync Command
  - PnP Information

#### How to Display Services

Select the **Display Services** menu option from any of these locations:

- Select a device and then select **File, Display Services**.
- Right-click on the device in the Tree View and select **Display Services**.
- Right-click on the device in the List View and select **Display Services**.

You can also see services by selecting **Properties...** further down in the menus. If the services have been discovered before, it is convenient just to get the properties because that will also update the available services.

#### *Trust Devices*

The Trust Devices option is often used when the Complete Security option is set. When Complete Security is used, then users at both the local device and the remote device will be asked for Passkeys (an agreed-upon sequence of letters and numbers) each time the two devices would like to communicate. If the remote device is Trusted, then the users will not need to enter Passkeys after the bonds are established whenever the devices are communicating (sending files, browsing folders, and so forth). **NOTE:** Both devices must trust each other. Otherwise, if one of them has the Complete Security option set, then the Passkey Requests will appear.

If a device is trusted, then a check mark will show beside the **Trust Device** menu item whenever the right-click menu is used on the trusted device. In addition, under the status column of the List View when it is showing details, the status of a trusted device will include the word trusted in parentheses after the status. For example: In Range (Trusted). The status will also appear under the **Properties...** of the device (right-click on the device). The trusted device will appear in the Trusted Devices folder AFTER a Refresh operation is done.

#### How to Trust A Device

1. Select the **Trust Device** menu option from any of these locations:
  - Right-click on the device in the Tree View and select **Trust Device**.
  - Right-click on the device in the List View and select **Trust Device**.
1. Enter a Passkey that matches the Passkey of the remote device.

---

### ***Properties...***

The Properties option enables a user to see all of the properties of a device displayed in one window. Before the window is displayed, the local device asks the remote device which services it has available. If the connection is not completed successfully, then the properties window will not be displayed. However, if the service discovery works, then a window will display the following properties:

- **Name**  
The name of the device will be displayed if one has been provided; otherwise, the name will be the address of the remote device.
- **Address**  
The address is the address assigned to the remote Bluetooth device.
- **Class**  
The class is the type of the remote device. Examples are modem or desktop computer.
- **Status**  
The status displays whether or not the remote device is In Range, Connected, Trusted, and so forth.
- **Services**  
The services box displays which types of services are available on the remote device. Common examples are Object Push or Dialup Networking.

#### How To See Device Properties

Select the Properties... menu option from any of these locations:

- Select a device and then select **File, Properties....**
- Right-click on the device in the Tree View and select **Properties....**
- Right-click on the device in the List View and select **Properties....**

You can also see services by selecting **Display Services** higher in the menus.

### ***Paste***

The Paste option allows a user to send file/s or folder/s to a remote device that have been placed on the clipboard. In other words, if a file has been selected and Cut or Copy has been pressed, then it can be pasted onto a device. The action of pasting the file will cause it to be sent to the remote device. The file/s will be placed into the Inbox on the remote device.

If a file or folder is pasted into a folder that is open underneath a remote device, then the file will be sent to that folder on the remote device rather than the device's Inbox.

#### How To Paste A File

NOTE: A file must have been copied onto the clipboard otherwise the **Paste** menu option will not be available.

Select the Paste menu option from any of these locations:

- Select a device in the List View and select **Edit, Paste.**
- Right-click on the device in the Tree View and select **Paste.**
- Right-click on the device in the List View and select **Paste.**



---

## **Delete**

The Delete option allows a user to delete a device from the Tree View and the List View.

NOTE: If an inquiry is later performed and the device is rediscovered, it will appear again in the list. If a device is trusted, deleting the device WILL NOT remove its trusted status. If both devices have trusted each other, the remote device will STILL be able to connect to your device without getting a Passkey request.

If a file or folder is selected, then (if their properties allow permission to the user) they will be deleted from the remote device. If the operation is successful, then the List View and Tree View will be refreshed to show that the file/s or folder/s are gone.

### How To Delete A Device Or A File

Select the Delete option from any of these locations:

- Select a device, file, or folder in the List View and select **Edit, Delete**.
- Select a device, file, or folder in the Tree View and select **Edit, Delete**.
- Select a device, file, or folder in the List View and select **File, Delete File**.
- Select a device, file, or folder in the Tree View and select **File, Delete File**.
- Select a device, file, or folder in the List View and press the Delete key on the keyboard.
- Select a device, file, or folder in the Tree View and press the Delete key on the keyboard.
- Right-click on a device, file, or folder in the List View and select **Delete**.
- Right-click on a device, file, or folder in the Tree View and select **Delete**.

## **Disconnect**

The Disconnect option allows a user to drop a connection to a remote device such as a file transfer connection. In other words, when you are connected to a remote device, you are not allowed to connect to a different remote device until the current connection is ended. Thus, the disconnect option a user to easily drop an active connection.

### How To **Disconnect** From A Remote Device

Select the Disconnect option from one of these two places:

- Right-click on the remote device in the Tree View and select **Disconnect**.
- Right-click on the remote device in the List View and select **Disconnect**.

---

### ***New Folder...***

The New Folder option allows a user to create a folder on a remote device. After the folder has been added, the Tree View and the List View will be updated to display the new folder.

#### How To Create A New Folder

Select the **New Folder...** option from any of these locations:

- Select a file or folder in the List View and select **File, New Folder....**
- Select a folder in the Tree View and select **File, New Folder....**
- Right-click on a file or folder in the List View and select **New Folder....**
- Right-click on a folder in the Tree View and select **New Folder....**

**NOTE:** The new folder will be created in the current directory. Thus, even if you click on a folder in the List View, the new folder will be created beside that folder, not IN that folder.

After the folder is successfully created, the List View and the Tree View will be updated to display the new folder.

### ***Get***

The Get option allows a user to retrieve a file or folder from a remote device and transfer it to the local device. The user will be allowed to select a location to place the file/folder on the local device.

#### How To Get A File or Folder

Select the **Get** option from either of these locations:

- Select a file or folder in the List View and select **File, Get.**
- Right-click on a file or folder in the List View and select **Get.**

Another method for pulling a file from the remote device is to select it in the List View and drag it onto the local machine's Desktop.

### ***Copy***

The Copy option allows a user to select objects to be placed on the windows clipboard. In other words, a copy of the file or folder will be placed in a location where it can later be retrieved by a **Paste** operation.

#### How To Copy A File

1. Select file/s or folder/s.
2. Select the **Copy** menu option from any of these locations:
  - Select the files in the List View and select **Edit, Copy.**
  - Right-click on the files or folders in the List View and select **Copy.**

---

### ***File Properties...***

The Properties option enables a user to see all of the properties of a file or folder displayed in one window.

- Name  
The name of the file or folder is displayed.
- Size  
The size of the file or folder is displayed.
- Modified  
The last date of modification is displayed.
- Permission  
The permission settings of the file or folder are displayed. Options are RWD (Read Permission, Write Permission, Delete Permission).

### **How To See File Properties**

Select the **Properties...** menu option from any of these locations:

- Select a file or folder and then select **File, Properties....**
- Right-click on the file or folder in the Tree View and select **Properties....**
- Right-click on the file or folder in the List View and select **Properties....**

### ***Find Device***

The Find Device option allows a user to enter the Bluetooth address of a device that they would like to add to the device list without doing a full inquiry. The device that is entered will be added to the device list even if the device is currently out-of-range or in non-discoverable mode. Once the device is in the list, a user can attempt all of the same operations that can be performed on devices found through an inquiry.

This utility allows a user to enter specific devices without needing to sort through the long list that can sometimes be generated by an inquiry when a room is full of Bluetooth devices.

**NOTE:** Even if an address is typed incorrectly (ie. the device does not truly exist), if it is in a valid format (AA:AA:AA:AA:AA:AA), then it will be added to the list. Be sure that if you are unable to connect to a device that the address is correct.

Also, the dialog will not accept an address that is not correctly formatted. Make sure that it contains the letters and colons correctly (AA:AA:AA:AA:AA:AA **NOT** AAA:AAA::AAA:AAA:)

### ***Auto Refresh***

With Auto Refresh, user can set the time and Blue Manager can auto search in range devices after this time.

- Click Tools→Options→Setting;
- Check 'Auto find devices every minutes' and then input the number;

### ***Bluetooth Headset with Blue Manager***

Blue Manager support Bluetooth headset audio profile, it allows the conversation between PC and Bluetooth headset.

- 
- Turn on Bluetooth headset and enter pair mode;
  - Run Blue Manager V2.2 or higher version, Blue headset will be found in ‘In Range Device’;
  - Double click the headset icon, user will see one jump out window to prompt user to input password, just input 8888; about the pin code of Bluetooth headset, please check the user manual of Bluetooth headset.
  - On headset side, user can hear ring, push the answer button to establish connection;
  - If PC side has microphone and speakers, PC and headset can talk to each other.

#### ***Windigo BT Audio***

Windigo BT Audio is a new feature, Blue Manager 3.1 or higher version support this feature, with this feature, end user can use Bluetooth headset instead of legacy microphone and speakers. Please see the related document in the Windigo Doc folder, it will show the detail steps how to make connection, and how to use Windigo BT Audio.

#### ***Performing Dial-up Networking and LAN Access***

Blue Manager supports Dial-up Networking and LAN Access by utilizing virtual COM ports in lieu of physical modems or physical COM ports. To perform Dial-up Networking, you utilize Microsoft’s Windows Dial-up Networking utility in conjunction with the virtual modem/com port.

---

# Commonly Asked Questions

The following is a list of the most commonly asked questions. Please review the questions and corresponding answers first should you have any problems with using Blue Manager as your problems may be addressed below.

1. Q: My PC cannot find a nearby Bluetooth device.  
A: Make sure that your PC is no less than 10 meters away from the Bluetooth device that you are trying to communicate to. The USB dongle only has a range of 10 meters, but the range might vary depending on the layout of the room and interference from other wireless devices. Try moving your PC or the partner device around until the two devices are able to 'see' each other.
2. Q: My Blue Manager desktop shows other Bluetooth devices in addition to the ones around me.  
A: You might be viewing a history of other Bluetooth devices that your PC has communicated with in the past. To view only the devices that are currently active, click on the **Up** icon and select **In Range Devices**. To view a history of all Bluetooth devices communicated to in the past, click on the **Up** icon and select **Devices**
3. Q: My PC fails to transfer files to another Bluetooth device.  
A: Make sure that the destination Bluetooth device is still active by hitting the **Refresh** button. Also make sure that the paired device has specified a destination folder where the file will be stored after receipt.
4. Q: Why can I not find the Bluetooth device names?  
A: You can check the **Find Device Names After Inquiry** option in the **Settings** tab of the Bluetooth Applications Setting window.
5. Q: How can I change the name of my Bluetooth device?  
A: Go to the **Tools** menu and select **Options**. Then go to the **Bluetooth** tab and change the name in the space labeled **Computer Name**.

---

# Troubleshooting

## *General*

Sometimes you will see errors when running the Blue Manager. Some common things that will happen:

- Make sure the Bluetooth device is connected and active (for example, a pcCard would need to be plugged-in to a laptop).
- Make sure the remote device supports the service you are trying to use (for example, don't try to connect with a dialup connection to a device that is only a file transfer server).
- Make sure you are not already connected to a different device.

Make sure the status of the remote device is In Range or you are already connected to it.

## *Exchange Business Cards*

- Make certain that your default vCard name and path is set to an existing vCard on the local device.
- Make sure the status of the selected device shows that it is In Range.
- Make sure your device is not currently connected to anything else.

## *Send File To ...*

- Make sure the status of the selected device shows that it is In Range.
- Make sure your device is not currently connected to anything else.
- Check properties on the selected device (right-click and choose Properties...) and make sure the device supports either Object Push or File Transfer.

## *Browse Folders*

- Make sure the status of the selected device shows that it is In Range.
- Make sure your device is not currently connected to anything else.
- Check properties on the selected device (right-click and choose Properties...) and make sure the device supports File Transfer.

## *Display Services*

- Make sure the status of the selected device shows that it is In Range.
- Make sure your device is not currently connected to anything else.

---

### ***Trust Devices***

If the trusting process fails:

- Make sure the status of the selected device shows that it is In Range.
- Make sure your device is not currently connected to anything else.
- Make sure you used the Passkey expected by the remote device.

If a device is trusted and the Passkey Request appears:

- Make sure the remote device has trusted the local device.

### ***Properties...***

- Make sure the status of the selected device shows that it is In Range.
- Make sure your device is not currently connected to anything else.

### ***Paste***

- Make sure the status of the selected device shows that it is In Range.
- Make sure your device is not currently connected to anything else.
- Make sure the remote device supports the services Object Push or File Transfer.

### ***Delete***

- Make sure the status of the selected device shows that it is Connected.
- Make sure the permissions on the files or folders have Delete Permission.

### ***New Folder...***

- Make sure the status of the selected device shows that it is Connected.
- Make sure the permissions on the share folders have Write Permission.

### ***Get***

- Make sure the status of the selected device shows that it is Connected.
- Make sure the permissions on the share folders have Read Permission.