

UHF RFID Reader/Reader Module

DEMO Software User Manual

V1.1

Winnix Technologies Co., Limited

Content

Content.....	2
1. Introduce.....	3
2. User Guide.....	3
2.1 Language.....	3
2.2 Connection.....	4
2.1.1 Ethernet connection.....	4
2.1.2 RS232 connection.....	4
2.3 Single inventory operation.....	5
2.4 Multiple inventory operation.....	6
2.5 RF output power setting.....	7
2.6 Region setting.....	7
2.7 Frequency hopping setting.....	8
2.8 Version info.....	8
2.9 Temperature info.....	9
2.10 Recommended Link setting.....	9
2.11 Antenna setting.....	9
2.12 Multiple inventory Delay time setting.....	9
2.13 Antenna working and interval time setting.....	10
2.14 Buzzer setting.....	10
2.15 GPIO setting.....	11
2.16 CW setting	11
2.17 RX ADC info.....	11
2.18 Algorithm setting.....	11
2.19 Single inventory timeout setting.....	12
2.20 Select and Query Setting.....	12
2.21 Tag reading/writing setting.....	12
2.22 Tag Lock setting.....	13
2.23 Tag Kill setting.....	14
2.24 FastID function.....	14
2.25 TagFocus function.....	15

1. Introduce

The Demo software user manual is used for HYM730/HYM740/HYM750 serial modules and HYR810/HYR820/HYR830 series readers;

Support Chinese and English language;

Support RJ45 connecting. Adopt TCP long connection method, slave computer as TCP server, host computer demo software as the TCP client side. (Notice: RJ45 connecting only for HYR830 reader)

Support RS232 connecting, baud rate 115200, 1 bit for start, 1 bit for stop, 8 bits for data.

2. User Guide

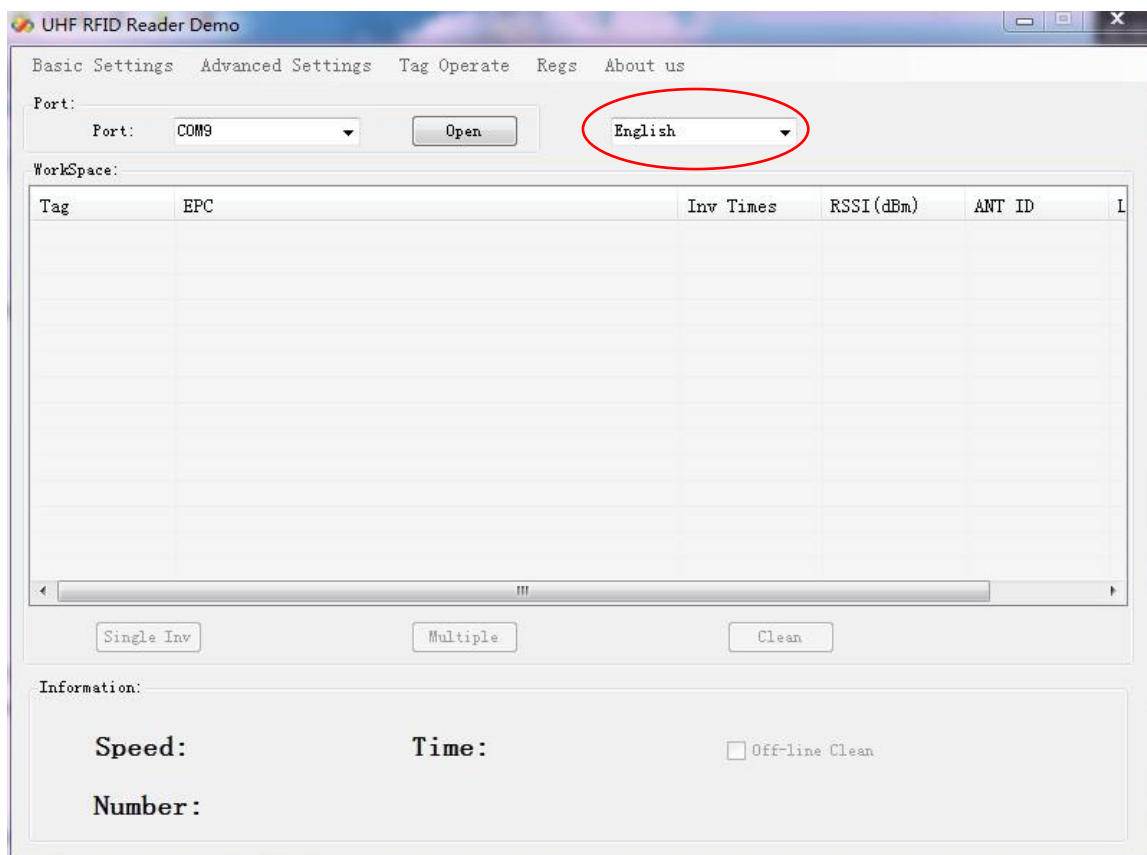
2.1 Language

Two optional languages are supported:

Simply Chinese

English

Open the DEMO software, as picture 1, click red marked area, could choose language.



Picture 1 Opening interface

2.2 Connection

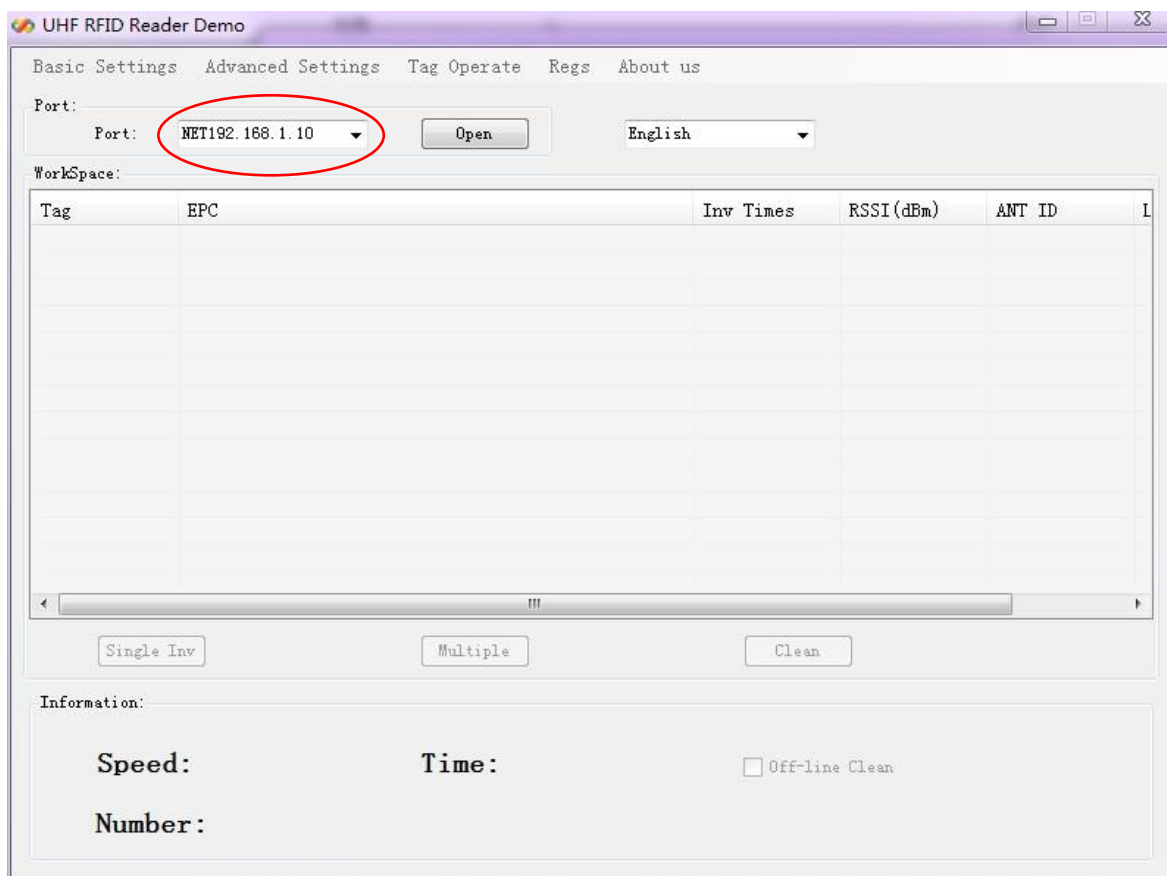
Demo software support two optional connecting, Ethernet and RS232 serial connections.

2.2.1 Ethernet connection setting

Default IP address of the reader is 192.168.1.10. If connecting in Ethernet (RJ45), please set IP address of PC at same range, such as 192.168.1.100. Before connecting, make sure IP address of PC could be passed at Ping operation.

Connections are displayed with different prefix. If connecting with RJ45, type 'NET'+ 'IP' at the drop-down box of port.

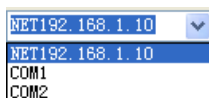
For example, connect to 192.168.1.10, type 'NET192.168.1.10' as below picture.



Picture 2 Ethernet port connection

2.2.2 RS232 connection

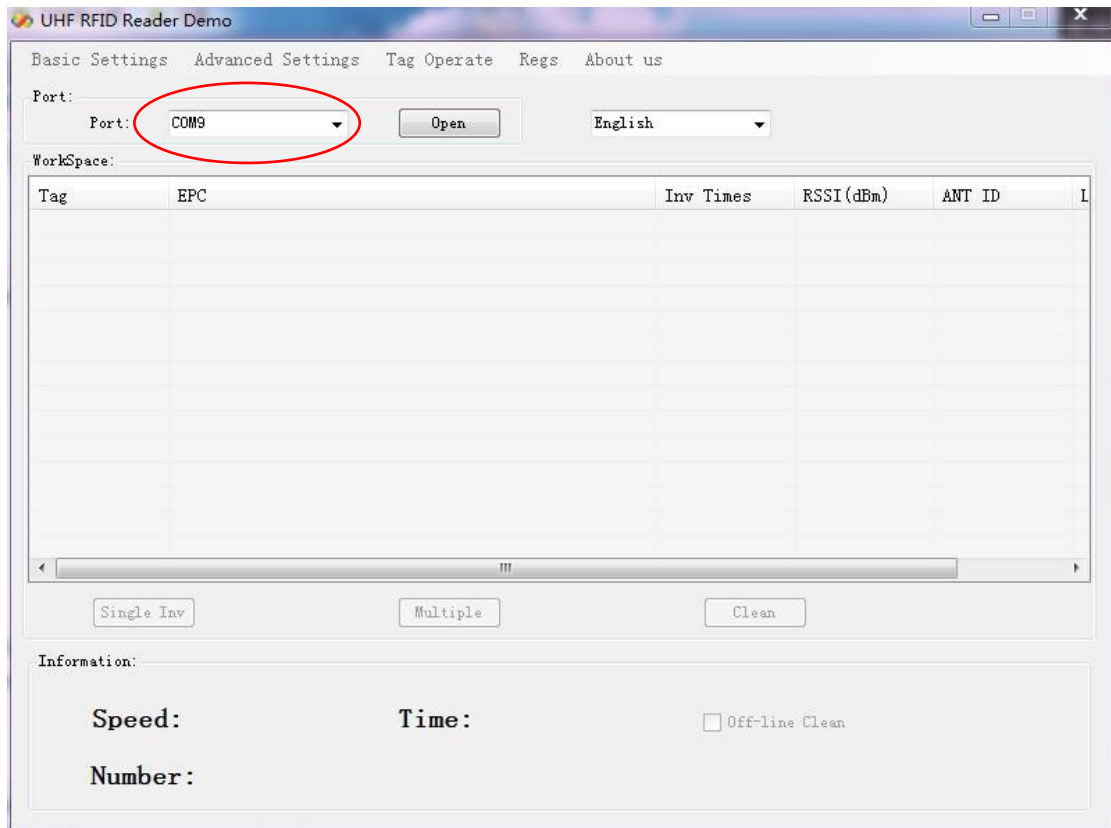
Demo software could automatically display usable COM ports, click drop-down box, you will see below.



Picture 3 Automatic identify serial port

RS232 connection is with a prefix of 'COM', which user don't need to input. What users have

to do is to choose correct COM number, and then it should be connected, as below picture.

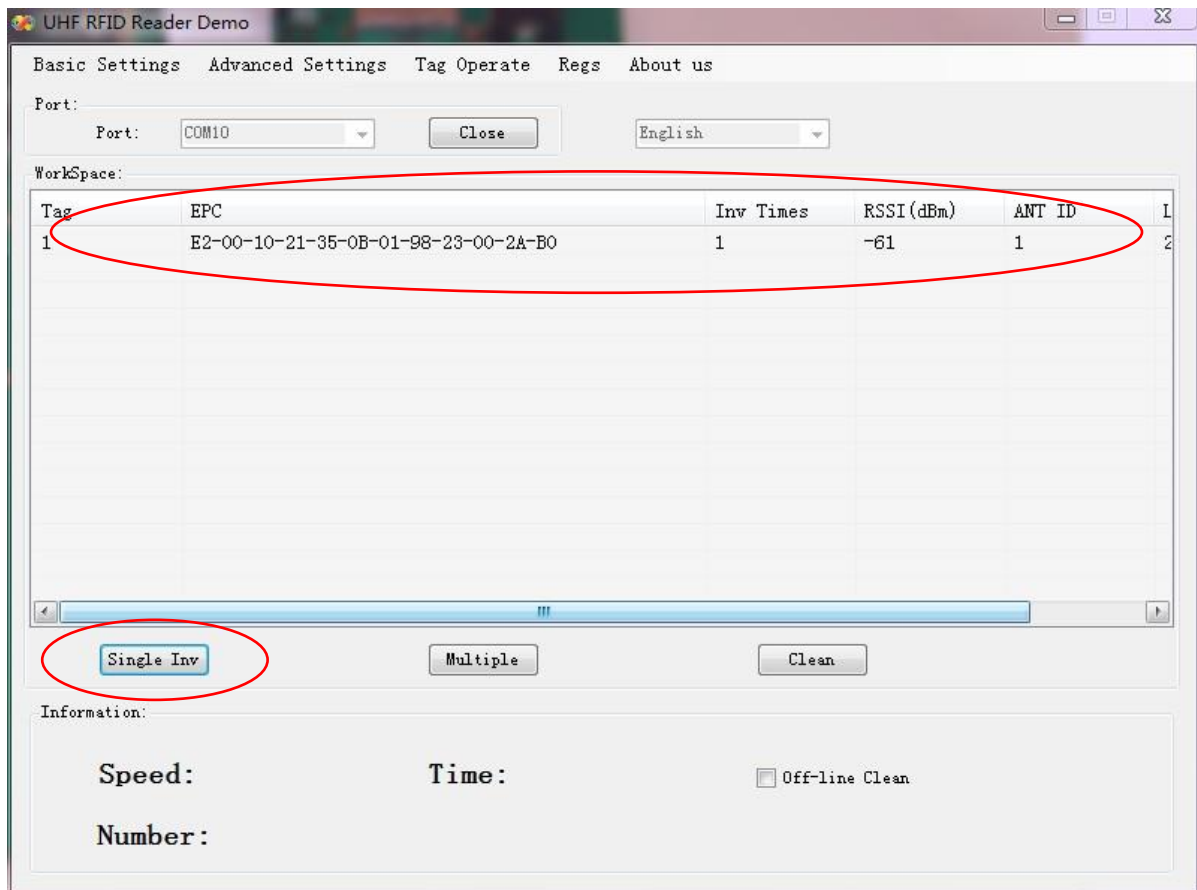


Picture 4 RS232 port connection

2.3 Single inventory operation

Single inventory operation is in 'single ask' and 'single answer' method of reading. Each inventory will result an acknowledgement frame. In each single inventory, only one tag's EPC data could be gotten.

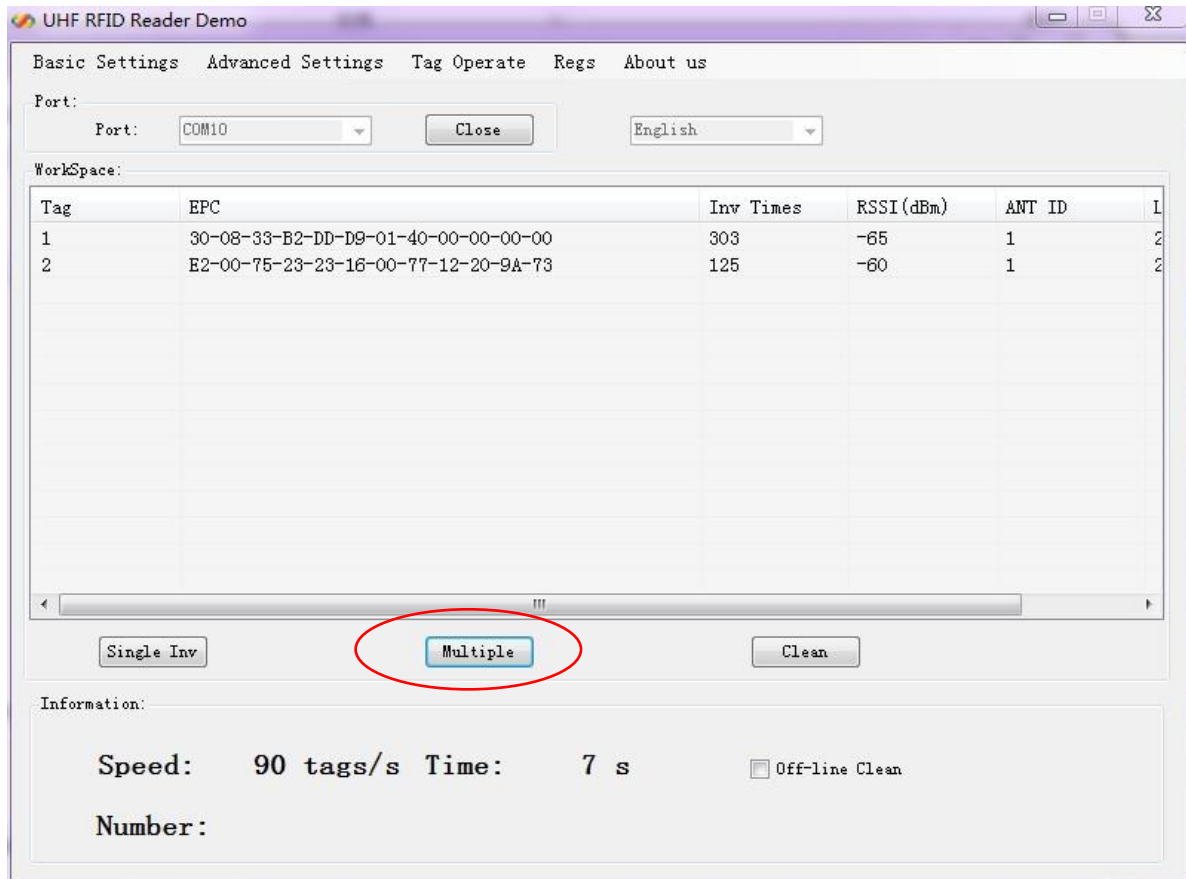
Single inventory mode supports to inventory tag function at any length EPC code. At workspace area, it could display EPC code, Inventory times, RSSI for each tag, as below picture.



Picture 5 Single inventory mode

2.4 Multiple inventory operation

Below picture is for multiple inventory mode. Inventory times are non-limited. At information area, it will display Inventory speed, time and tag numbers. Click 'off-line clean', it will launch the function. If a tag is not read in 4 seconds, the marked color of the tag will turn grey, if over 8 seconds, the tag will be cleared from workspace.



Picture 6 Multiple inventory mode

2.5 RF output power setting

TX power setting is in basic settings section, below picture is for TX power setting.



Picture 7 RF output power setting

The TX power range is 5-30dBm, with 1dBm stepping up. 'Set' the picked power, and then 'get' for checking the result.

Choose "save", the setting will be kept after power off.

2.6 Region setting

Region setting is in basic settings section, as below picture.



Picture 8 Region setting

Region setting includes

China1 area (840.625MHz~844.375MHz),

China2 area (920.625MHz~924.375MHz),

Europe area (865.7MHz~867.5 MHz),

USA area (902MHz~928MHz),

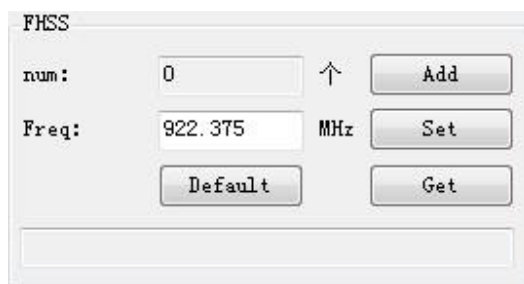
Korea and Japan area.

Choose the frequency band at your area, and then click 'set', 'get' is to check the current band you have chosen.

Choose "save", the setting will be kept after power off.

2.7 Frequency hopping setting

Frequency hopping setting is in basic settings as below picture.



Picture 9 Frequency hopping setting

Click 'get', you will see the each hopping points of the frequencies.

Fixed frequency setting: fill in the frequency at the blank then click 'add', then click 'set', if successful, it will notice. Click 'get' can check out the set value.

Self-defining frequency hopping setting: input one frequency point, click 'add'; then input another, click 'add'. Repeat till you add all frequency points, then click 'set'. You can click 'get' to check if setting successfully.

2.8 Version info

Version information is displayed in basic settings as below picture.

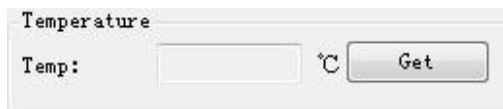


Picture 10 Version information

Click 'get', you will get the version information, including Software version, Hardware version, Firmware version and Module ID.

2.9 Temperature info

Temperature info is displayed in basic settings as below picture.



Picture 11 Temperature information

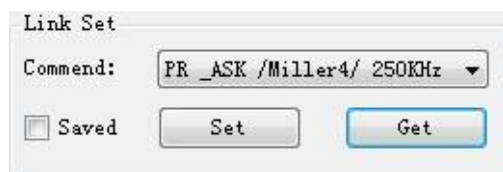
Click 'get' to see the working temperature information. For normally, the temperature range is between -40 – 85 degree Celsius.

When the “temperature protect” is activated (the default is turn on), once the temperature is over 65°C, the rate of inventory would fell by 50%; If the temperature is over 85°C, the reader-module would stop working automatically, and it would back to work again only the temperature below 85°C.

More than 80°C on the life of the module will have a certain impact.

2.10 Recommended link setting

Link setting is in basic settings as below picture.



Picture 12 Recommended link setting

Recommended Link Settings:

- DSB_ASK /FM0/40KHz
- PR_ASK/Miller 4/250KHz
- PR_ASK/Miller 4/300KHz
- DSB_ASK /FM0/400KHz

Default Link setting is PR_ASK/Miller 4/250KHz.

Choose 'save', the setting will be kept after power off.

2.11 Antenna setting

Antenna setting is in Basic Setting as below picture.

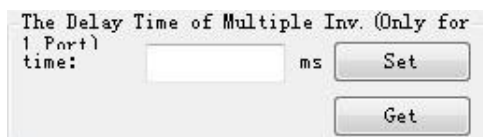


Picture 13 Antenna setting

ANT2, ANT3, ANT4 are not applied for single port module. For four channels module and reader, you could choose one or more antennas to work, and also can set the working time for each antenna.

2.12 Multiple inventory Delay time setting

Multiple inventory delay time setting is in Basic Setting, as below picture.



Picture 14 Multiple inventory Delay time setting

The setting is for module waiting time after one inventory cycle during the multiple inventory working. **This is only applied for single port module. Default value is 0 during multiple inventory. At such case, the module will be working at full load, while the module temperature will be higher.**

2.13 Antenna working and interval time setting

Antenna working and interval time setting is in Basic Setting, as below picture.

Picture 15 Antenna working and interval time setting

The setting is for each antenna working time and interval time during multiple inventory. Before the setting, you should choose the antenna number. For instance, if want to set ANT1 of working time 300ms, ANT2 of working time 350ms, ANT3 of working time 300ms, ANT4 of working time 500ms, and waiting 1000ms for once reading cycle, see following steps:

- a) Click ANT1, ANT2, ANT3, ANT4, and 'set';

- b) Set ANT1 of working time 300ms, ANT2 of working time 350ms, ANT3 of working time 300ms, ANT4 of working time 500ms, and interval time is 1000ms.

2.14 Buzzer setting

Buzzer setting is in Basic Setting as below picture.

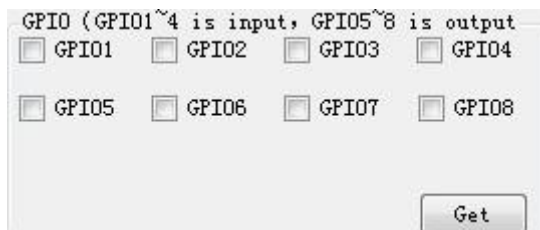
Picture 16 Buzzer setting

Notice: The function is only for HYR830 reader.

Click 'Ring', you will hear the alarm from the reader.

2.15 GPIO setting

GPIO setting is in Basic Setting as below picture.



Picture 17 GPIO setting

Notice: HYM series modules only have 3 output IO ports (GPIO1, GPIO2 and GPIO3). HYM830 reader has 4 output IO ports (GPIO1, GPIO2, GPIO3, GPIO4), and 4 input IO ports (GPIO5, GPIO6, GPIO7, GPIO8)

The picked output IO ports will output high level, otherwise will output low level. If connecting input IO ports at high level, click 'get', you will see the picked IO ports; while at low level, the IO ports are not picked.

2.16 CW setting

CW setting is in advanced settings as below picture.

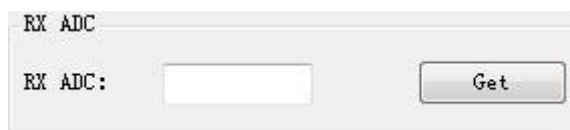


Picture 18 CW setting

Click 'ON' to open single carrier wave transmit, 'OFF' is to close single carrier wave transmit. 'Test-CW' is for testing, please ignore it.

2.17 RX ADC info

RX ADC information is displayed in advanced settings as below picture.

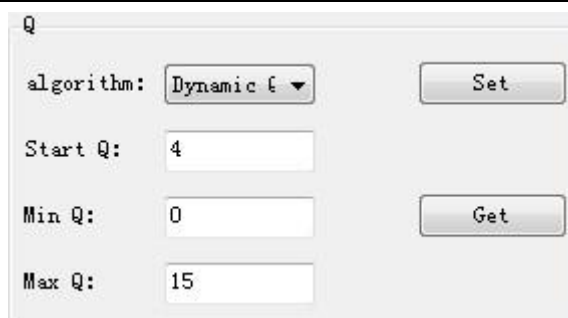


Picture 19 RX ADC information

RX ADC is very important for checking the matching and connection of the antenna with module or reader. If the data is above 10, there may be connection problem or no-matching. At the time, please re-check the connection of antenna, or remove it, otherwise it will damage the module or reader. If the data is below 10, the antenna can be worked.

2.18 Q setting

In Advanced Settings, below is the picture of Q setting.



Picture 20 Q setting

There are two ways of dynamic Q and static Q. Dynamic Q is recommended, as it could automatically adjust the Q value to achieve most fast inventory.

2.19 Single inventory timeout setting

In Advanced Settings section, below is the picture for single inventory timeout setting

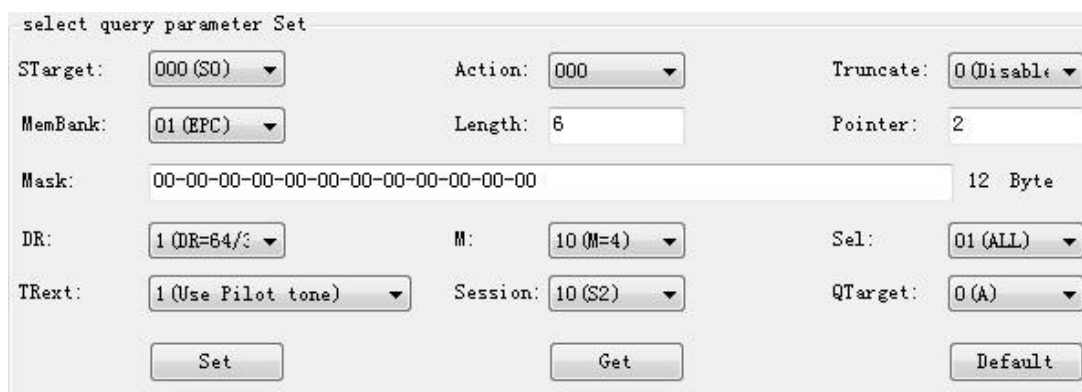


Picture 21 Single inventory timeout setting

This function is only for single inventory. If single read is unsuccessful, after the overtime, the reader will report the result. If the reading is successful during the overtime, the response will be appeared immediately.

2.20 Select and Query Setting

In Advanced Settings section, below is the picture for Select and Query parameter setting

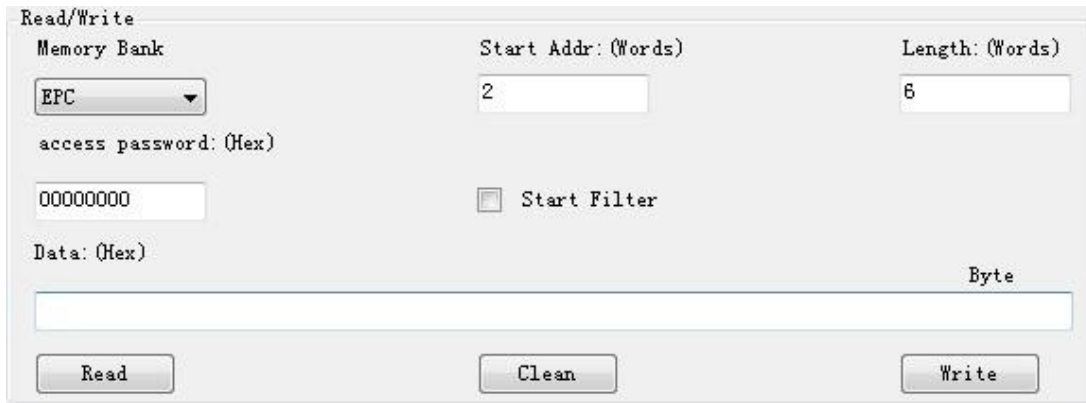


Picture 22 Select and Query setting

Please read detail instruction for Select and Query command in ISO18000-6C protocol.

2.21 Tag reading and writing setting

In Tag Operate section, below is the picture for tag reading/writing setting



Picture 23 Tag reading and writing setting

Memory Bank is data area of the tag, which includes RFU, EPC, TID and USR. RFU is for password zone of the tag, including Access Password (AccPwd) and Kill Password (Killpwd). EPC is the ID number of the tag, usually at 12 bytes. TID is the worldwide sole ID code, and includes the information of tag IC company. USR is data zone for users, for some kind of tag there is no the USR data zone.

Start address is for the beginning address of data reading and writing. **Unit is word (One work equals to 2 bytes).**

Length is to show the length of data write. **Unit is word (One work equals to 2 bytes).**

Access password: this is only for the reading and writing on those locked tag. Notice that you can read EPC information of the tag even the tag has been locked, but have to access the password for writing. TID is only for read, can't for write.

Read/Write setting is usually operated with filter operation, which means you can read/write those picked EPC tag, and avoid to reading/writing un-picked tags. Steps are as following:

Find the tag on 'workspace' which you want to reading and writing, **double-click** the EPC number, enter 'tag operate' interface, then you can operate.

2.22 Tag Lock setting

In Tag Operate section, below is the picture for Tag Lock setting.



Picture 24 Tag lock setting

At RFU zone, KillPwd and AccPwd could set separately.

There are four kinds of operation for lock setting in each zone, including Unlock, Normal lock, Permanent lock, Permanent Unlock, and usually for Lock and normal lock operations.

Tag lock setting is usually operated with filter operation, which means you can lock those picked EPC tags, and avoid locking un-picked tags. Steps are as following:

Find the tag on 'Workspace' which you want to lock, double-click the EPC number, enter 'tag operate' interface, then you can operate.

2.23 Tag Kill setting

In Tag Operate section, below is the picture for Tag Kill setting.



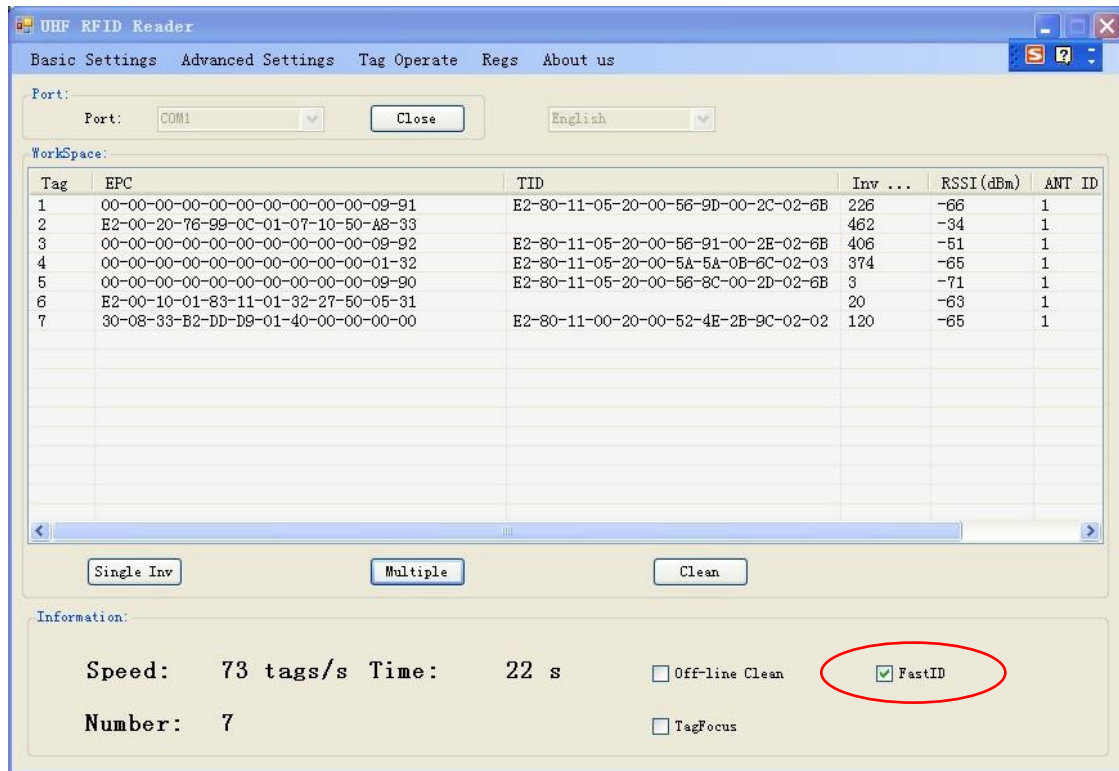
Picture 25 Tag kill setting

It is supported by ISO18000-6C protocol the reader could kill the tags permanently. **Please caution the killed tag could not be usable.**

Tag Kill setting is usually operated with filter operation, which means you can kill the picked EPC tags, and avoid killing un-picked tags. Steps are as following:

Find the tag on 'Workspace' which you want to kill, double-click the EPC number, enter 'tag operate' interface, then you can operate.

2.24 FastID Function



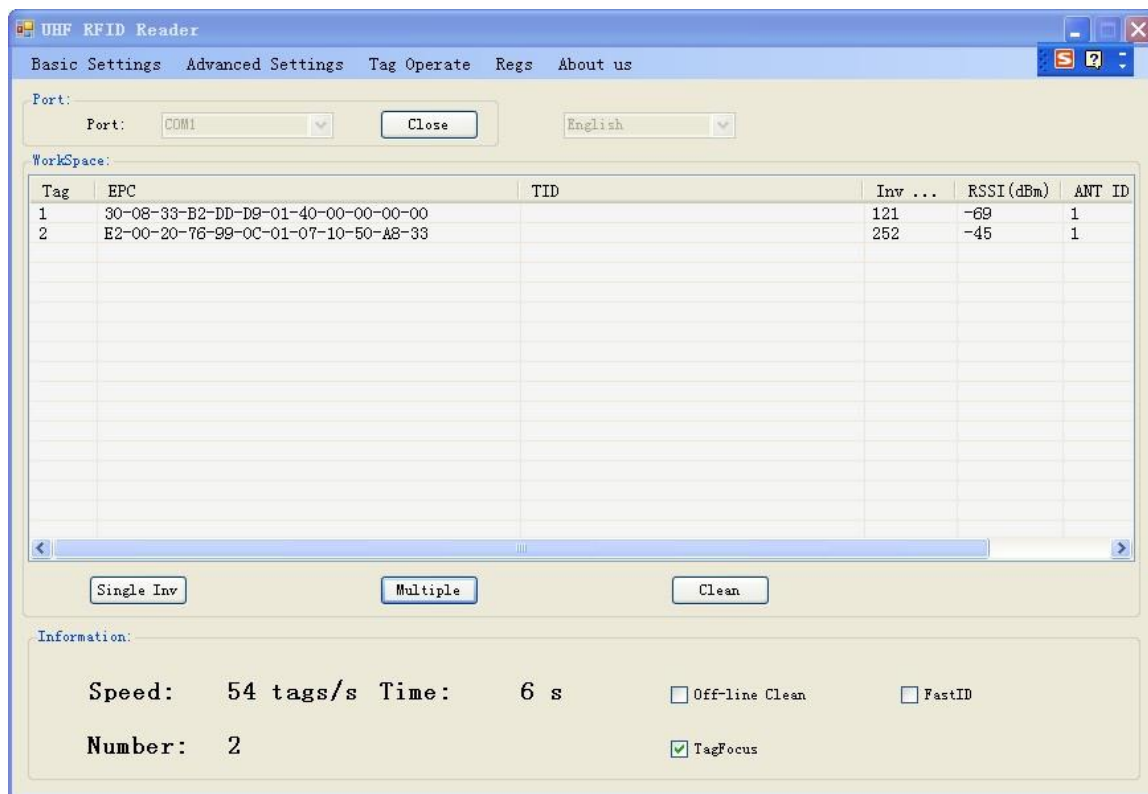
Picture26 FastID Operation screen

Click "FastID" then you can start FastID function

When you open "FastID", on single inventory and continuous inventory, the EPC and TID of the tag will be shown together.

Attention, only if the tag support FastID function, then you can use this function, if the tag didn't support this function, you only can get EPC.

2.25 TagFocus Function



Picture27 TagFocus Operation screen

Click "TagFocus", then you can start TagFocus function

OEMs information: RealID Technology Co., Ltd. was established in December 2012, the registered capital of 990 million yuan. It is a professional company specializing in RFID system design, equipment development and related technical services. RealID Technology Co., Ltd. gathered a number of highly qualified management personnel, first-class product development elite, to provide customers with first-class hardware products, program design, and custom services.

Changes or modifications made to the equipment not expressly approved by Winnix may void the FCC / IC authorization to operate this equipment.

The use of the transceiver module is authorized in mobile or fixed host devices taking into account the conditions listed below:

- OEM Integrator must ensure that the end user manual may not contain any information about the way to install or remove the module from the final product.
- Depending on the final host device additional authorization requirements for the nontransmitter functions of the transmitter module may be required (i.e., Verification, or Declaration of Conformity) The OEM integrator is responsible for ensuring that after the module is installed and operational the host continues to be compliant with the Part 15B unintentional radiator requirements.
- The information on the label and in the user manual is required to be incorporated in the user manual of the final host. see 47 CFR15 requirements for more details (e.g. 15.19 / 15.21 / 15.101 / 15.105 / RSSGEN / ICES)
- Additional label with the words 'Contains FCC ID: RVZHYM730' shall be applied and visible from the outside of the host product.
- The module must be installed and used in strict accordance with the manufacturer's instructions as described in the user documentation that comes with the module
- The end user manual for the final host product operating with this transmitter must include operating instructions to satisfy RF exposure compliance requirements.

Radiofrequency radiation exposure Information:

This equipment complies with FCC radiation exposure limits set forth for an uncontrolled environment. This equipment should be installed and operated with minimum distance of 25 cm between the radiator and your body. This transmitter must not be colocated or operating in conjunction with any other antenna or transmitter

- When the final host product operating with this transmitter deviate from above, installation of this module into specific final hosts may require the submission of a Class II permissive change application containing data pertinent to RF Exposure, spurious emissions, ERP/EIRP, and host/module authentication, or new application if appropriate

Feel free to contact us if additional guidance is required.

Manual Requirements according 15.19 / RSSGEN

This device complies with Part 15 of the FCC Rules [and with Industry Canada licence exempt RSS standard(s)].

Operation is subject to the following two conditions:

- (1) this device may not cause harmful interference, and
- (2) this device must accept any interference received, including interference that may cause

undesired operation.

Manual Requirements according 15.21 Changes or modifications made to this equipment not expressly approved by (manufacturer name) may void the FCC authorization to operate this equipment.

Declaration

1) Marketing

The device must be sold to dealers.

2) Professional installation

Installed by licensed professionals (EUT sold to dealer who hire installers)

3) Application

The intended use is generally not for the general public. It is generally for industry/commercial use.

Antenna Information

The HY730 includes an external antenna port.

Here are some design guidelines to help ensure antenna performance:

- Never place the ground plane or route copper traces directly underneath the antenna portion of the module.
- Never place the antenna close to metallic objects.
- In the overall design, ensure that wiring and other components are not placed near the antenna.
- Do not place the antenna in a metallic or metallized plastic enclosure.
- Do not place the antenna in a metallic or metallized plastic enclosure.
- Keep plastic enclosures 1cm or more from the antenna in any direction.