

Pen-Tablet User Manual

Model No.: CP-403A, CP-403B

Wintime Electronics Corp.

9F, No. 738, Chung Cheng Rd.,
Chung Ho City, Taipei Hsine,
Taiwan, R.O.C.

Table of Contents

Chapter 1	Introduction	1
	Suggested uses for Paint Pal Deluxe	1
	System Requirements	2
	Package Contents	2
Chapter 2	Installing the Hardware	3
	Getting familiar with Paint Pal Deluxe	3
	Connecting to Desktop system	5
	Connecting to Notebook Computer	7
Chapter 3	Installing the Software	8
	Installing the Driver	9

A FCC Compliance Statement 10

Welcome !

Congratulations on your purchase of **Pen-Tablet**!

Pen-Tablet is the perfect tool for creating art on your computer. **Pen-Tablet** replaces a traditional Mouse with a flexible pen tablet, giving you a more natural way to draw, trace, write, and design. **Pen-Tablet** also comes bundled with advanced drawing software that will get you started right away.

Suggested uses for Pen-Tablet

Pen-Tablet is a powerful aid in creating computer graphics and for any application that requires the accuracy of hand held writing tools. Possible uses for **Pen-Tablet** include:

- ◆ Drawing and graphic design
- ◆ Handwriting
- ◆ Signatures
- ◆ Computer-aided design
- ◆ Image Editing
- ◆ CAI
- ◆ Picking commands on a template

System requirements

- ◆ Intel Pentium level computer or compatible.
- ◆ Windows 95/98 operating system.
- ◆ 32MB RAM
- ◆ 80 MB hard disk space
- ◆ 256 color VGA display adapter(Hi-color or True-color preferred)
- ◆ Serial port
- ◆ CD-ROM drive

Package contents

After you open the box, please check the package contents carefully. You should have the following items:

- ❶ Tablet with Serial port cable
- ❷ Corded Stylus Pen
- ❸ Quick Installation Guide
- ❹ Driver & Manual CD
- ❺ Applications CD (optional)



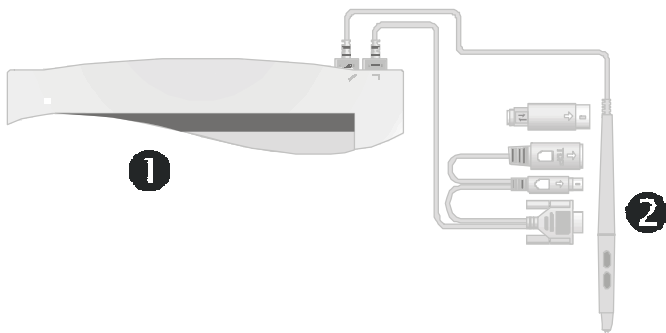
Installing the Hardware

Getting familiar with Pen-Tablet

Before you install **Pen-Tablet**, take a few minutes to inspect the parts and get familiar with how **Pen-Tablet** connects to your computer (see the diagrams below).

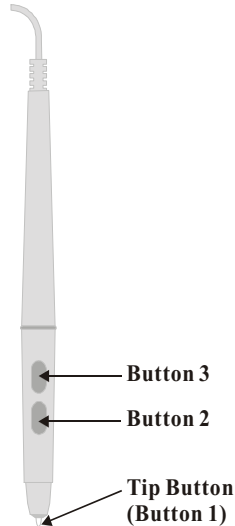
Connctors

- ❶ Serial Port Tablet
- ❷ Corded Stylus Pen



Stylus Pen buttons

There are three buttons on the Stylus Pen :



Button 1 - Also called “**Tip Button**” This button works like Mouse left button. It is not programable.

Button 2 - This button works like Mouse right button. User may set its function in Control Panel (see description on page 11).

Button 3 - This button works like Mouse middle button. User may set its function in Control Panel (see description on page 11).

Connecting to a desktop system

Follow these simple procedures to connect **Paint Pal Deluxe** to a desktop system:

1. Turn off your system and any other devices connected with the system.
2. **Paint Pal Deluxe** needs to connect keyboard and gets power from keyboard connector. Please identify your keyboard type before you first, there are two type of keyboards, AT and PS/2 type (see diagram below).

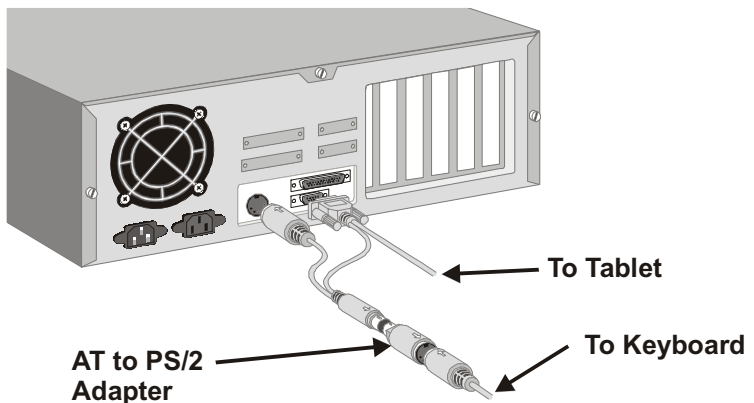


AT Connector

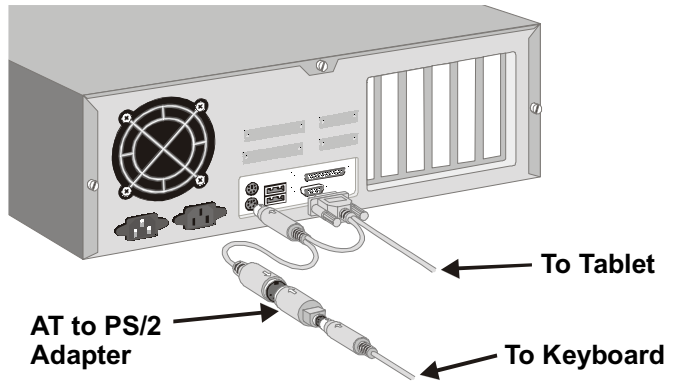


PS/2 Connector

3. If your keyboard is AT type, you may connect **Paint Pal Deluxe** to your system and to an available serial port and AT keyboard connector according to diagrams below :



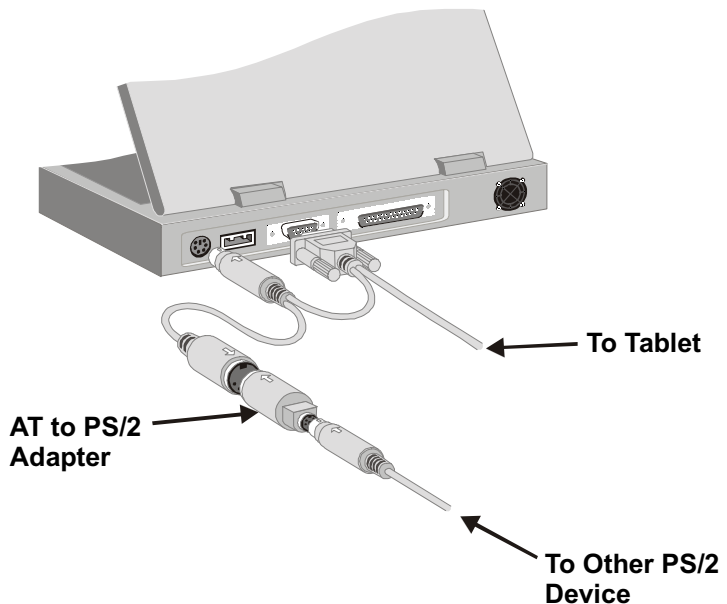
4. If your keyboard is PS/2 type, you may connect **Paint Pal Deluxe** to your system and to an available serial port and PS/2 keyboard connector according to diagrams below :



Connecting to a Notebook computer

Follow these simple procedures to connect **Paint Pal Deluxe** to a Notebook computer:

1. Turn off your Notebook and any other devices connected with the Notebook.
2. Connect **Paint Pal Deluxe** to an available serial port and PS/2 keyboard connector according to the diagram below.



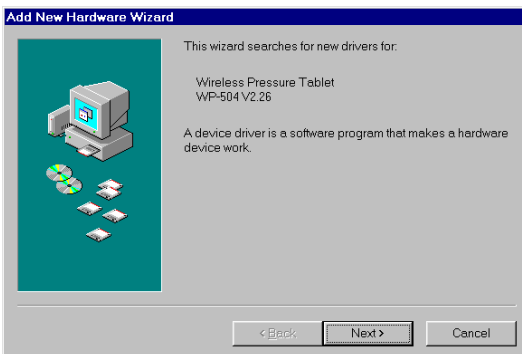
Installing the Software

Installing the driver

If you have previously installed a pen tablet, please first remove the old driver from your system before installing the **Pen-Tablet** driver.

Follow these procedures to install **Pen-Tablet**.

1. Make sure **Pen-Tablet** is properly connected to your computer.
2. Start your computer.
3. Insert the **Pen-Tablet** driver CD
4. **Pen-Tablet** is a Plug & Play (PnP) device, your system will detect the hardware and activate the new device installation procedures automatically.



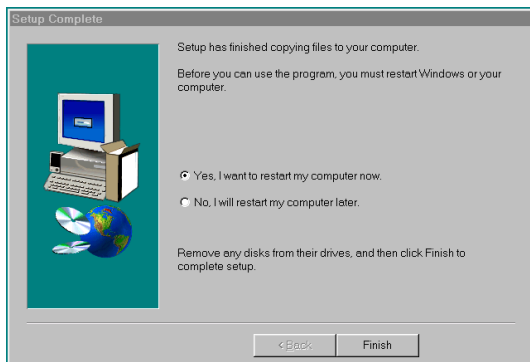


5. Some systems do not support PnP, you may go to **Start**, and click on **Run**. Then select CD-ROM drive and run Setup.exe
6. You will then see a Window welcoming you to the Tablet driver. (see the diagrams below). Click **Next** when you are ready to continue.



7. System will ask where that you wish to place the driver. You can select the default folder by just clicking Next, or type in your own preference.
8. You can then select the folder for the program icons that come with **Pen-Tablet**. Click **Next** when you are ready to continue. The Tablet driver will then install.

9. After the installation ends, you will need to reboot your system to start using your **Pen-Tablet**.



FCC Compliance Statement

This equipment has been tested and found to comply with the limits for a Class B digital device, pursuant to Part 15 of FCC Rules. These limits are designed to provide reasonable protection against harmful interference when the equipment is operated in a residential installation.

This equipment generates, uses, and can radiate radio frequency energy and if not installed and used in accordance with the instruction manual may cause harmful interference to radio communications. However, there is no guarantee that interference will not occur in a particular installation.

If this equipment causes harmful interference to radio or television reception, which can be determined by turning the equipment off and on, the user is encouraged to try to correct the interference by one or more of the following measures:

- 1 Reorient the receiving antenna.
- 1 Increase the separation between the equipment and receiver .
- 1 Connect the equipment into an outlet on a circuit different from that to which the receiver is connected.

Changes or modifications not expressly approved by the party responsible for compliance can void the user's authority to operate the equipment. This product is equipped with a shielded cable. Extension cable, if used, must be shielded in order to comply with the emission limits. Operation of this device is subject to the following conditions: (1) This device may not cause harmful interference, and (2) this device must accept any interference received, including interference that may cause undesired operation.