

DELUXE

# Paint Pal

## User's Manual

Version 1.0

**WINTIME**

## **Limited Warranty**

Wintime warrants that the enclosed Hardware Device will be free from defects in materials and workmanship under normal use and service for a period of one year from the date of purchase. Any support services provided by Wintime shall be substantially as described in applicable written materials provided to you by Wintime. Some states and jurisdictions do not allow limitations on duration of an implied warranty, so the above limitation may not apply to you. To the extent allowed by applicable law, implied warranties on the Hardware Device, if any, are limited to one year.

Should you have any questions concerning this Warranty, please contact your dealer or you may visit the Wintime web site at <http://www.wintime.com.tw>

## **Trademarks Information**

Wintime and Paint Pal Deluxe are the trademarks of Wintime Electronics Inc. IBM is a trademark of the International Business Machine Corporation. Microsoft and the Windows Logo are registered trademarks and Windows is a trademark of Microsoft Corporation. All brand names and trademarks are properties of their respective owners.

---

# Table of Contents

---

Chapter 1	<b>Introduction .....</b>	<b>1</b>
	Suggested uses for Paint Pal Deluxe .....	1
	System Requirements .....	2
	Package Contents .....	2
Chapter 2	<b>Installing the Hardware .....</b>	<b>3</b>
	Getting familiar with Paint Pal Deluxe .....	3
	Connecting to Desktop system .....	4
	Connecting to Notebook Computer .....	6
Chapter 3	<b>Installing the Software .....</b>	<b>7</b>
	Installing the Driver .....	7
Chapter 4	<b>Customizing the Pen Tablet .....</b>	<b>10</b>
	Finding the Pen Table icon .....	10
Appendix	<b>A. Taking care of your Tablet .....</b>	<b>13</b>
	<b>B. Questions &amp; Answers .....</b>	<b>14</b>
	<b>C. Specifications .....</b>	<b>15</b>
	<b>D. FCC Compliance Statement .....</b>	<b>16</b>

### Welcomw !

Congratulations on your purchase of **Paint Pal Deluxe!**

**Paint Pal Deluxe** is the perfect tool for creating art on your computer. **Paint Pal Deluxe** replaces a traditional Mouse with a flexible pen tablet, giving you a more natural way to draw, trace, write, and design. **Paint Pal Deluxe** also comes bundled with advanced drawing software that will get you started right away.

### Suggested uses for Paint Pal Deluxe

**Paint Pal Deluxe** is a powerful aid in creating computer graphics and for any application that requires the accuracy of hand held writing tools. Possible uses for **Paint Pal Deluxe** include:

- ◆ Drawing and graphic design
- ◆ Handwriting
- ◆ Signatures
- ◆ Computer-aided design
- ◆ Image Editing
- ◆ CAI
- ◆ Picking commands on a template

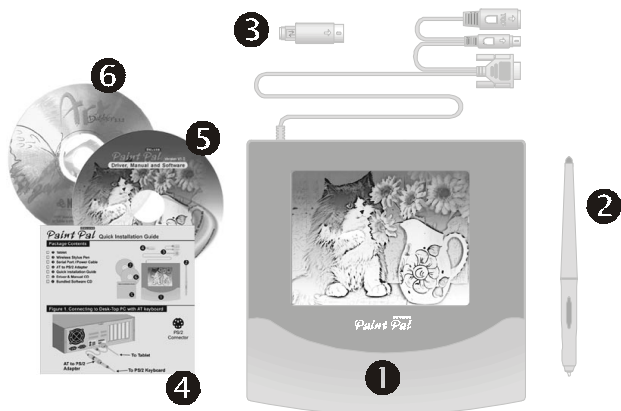
## System requirements

- ◆ Intel Pentium level computer or compatible.
- ◆ Windows 95/98 operating system.
- ◆ 32MB RAM
- ◆ 80 MB hard disk space
- ◆ 256 color VGA display adapter(Hi-color or True-color preferred)
- ◆ Serial port
- ◆ CD-ROM drive

## Package contents

After you open the box, please check the package contents carefully. You should have the following items:

- ❶ Tablet with Serial port/Power cable
- ❷ Wireless Stylus Pen
- ❸ AT to PS/2 Adapter
- ❹ Quick Installation Guide
- ❺ Driver & Manual CD
- ❻ Art Dabbler CD



# Installing the Hardware

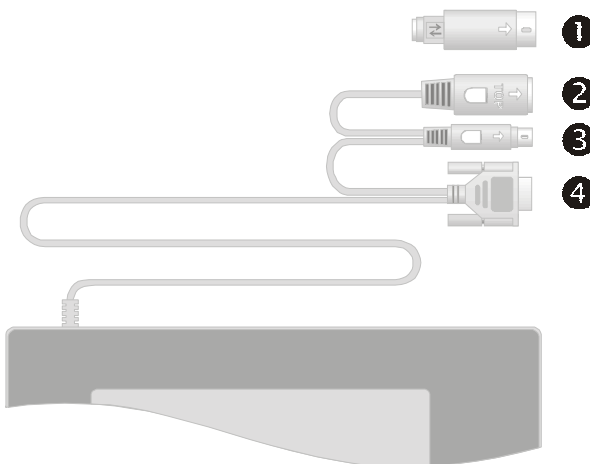
---

## Getting familiar with Paint Pal Deluxe

Before you install **Paint Pal Deluxe**, take a few minutes to inspect the parts and get familiar with how **Paint Pal Deluxe** connects to your computer (see the diagrams below).

Conntors descriptions :

- ❶ AT to PS/2 Adapter
- ❷ AT Type Keyboard Connector
- ❸ PS/2 Type Keyboard Connector
- ❹ Serial Port (COM Port) Connector



## Connecting to a desktop system

Follow these simple procedures to connect **Paint Pal Deluxe** to a desktop system:

1. Turn off your system and any other devices connected with the system.
2. **Paint Pal Deluxe** needs to connect keyboard and gets power from keyboard connector. Please identify your keyboard type before you first, there are two type of keyboards, AT and PS/2 type (see diagram below).

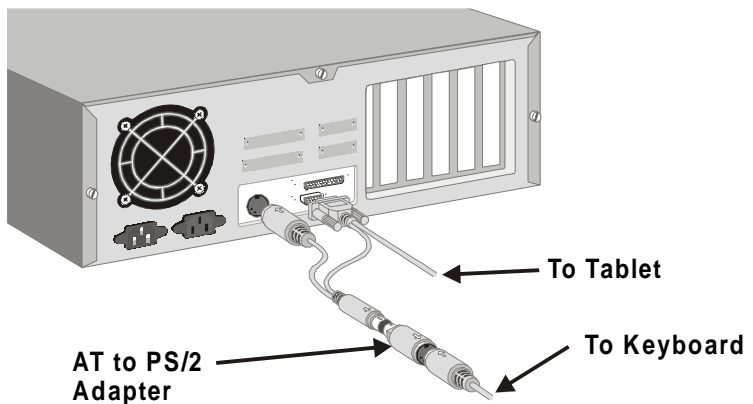


AT Connector

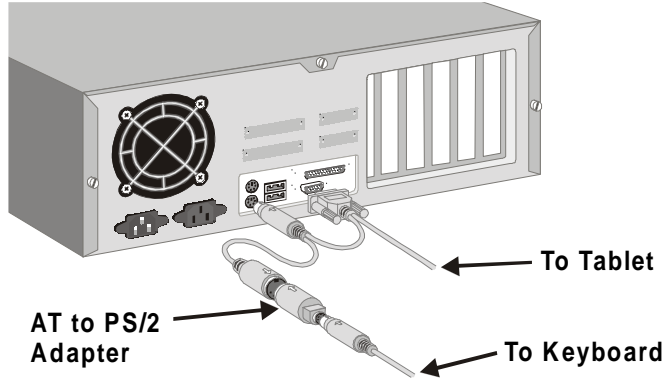


PS/2 Connector

3. If your keyboard is AT type, you may connect **Paint Pal Deluxe** to your system and to an available serial port and AT keyboard connector according to diagrams below :



4. If your keyboard is PS/2 type, you may connect **Paint Pal Deluxe** to your system and to an available serial port and PS/2 keyboard connector according to diagrams below :

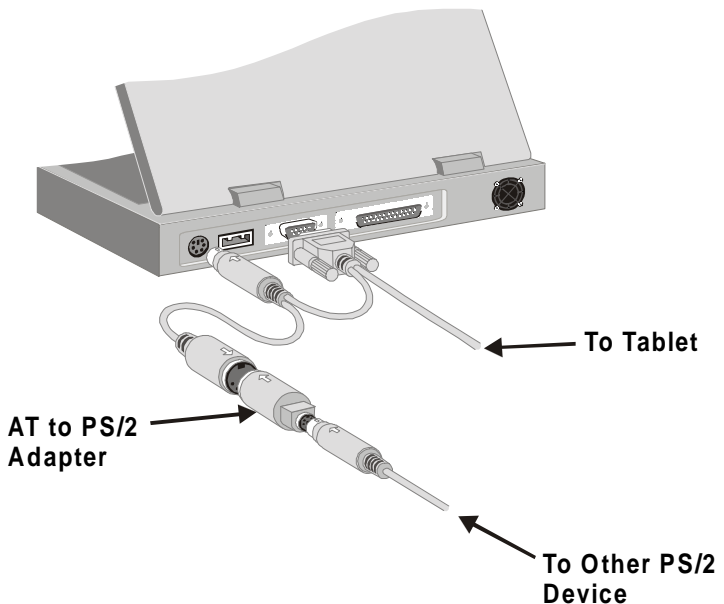




## Connecting to a Notebook computer

Follow these simple procedures to connect **Paint Pal Deluxe** to a Notebook computer:

1. Turn off your Notebook and any other devices connected with the Notebook.
2. Connect **Paint Pal Deluxe** to an available serial port and PS/2 keyboard connector according to the diagram below.



# Installing the Software

---

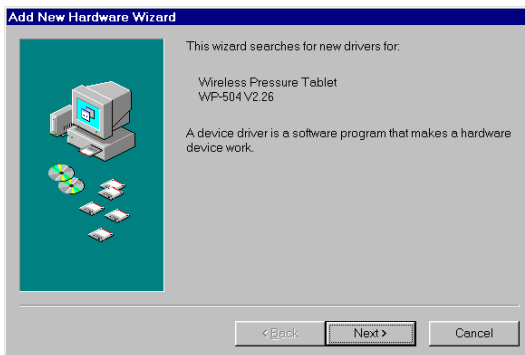
## Installing the Driver

After you have successfully installed the hardware, you may turn on the power to install the software driver. If you have previously installed any pen tablet's driver, please first remove the old driver from your system before installing the **Paint Pal Deluxe** driver.

Follow these procedures to install **Paint Pal Deluxe** :

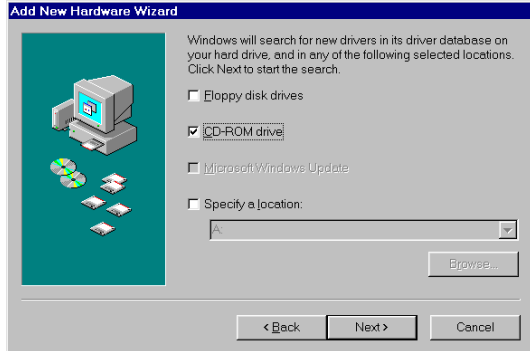
1. Power on your computer.
2. **Paint Pal Deluxe** is a Plug & Play (PnP) device, your system will detect the new hardware and activate the new device installation procedures automatically.

Following window will appear on screen :



Some systems do not support PnP, you may go to **Start**, and click on **Run**. Then select CD-ROM drive and run **Setup.exe**

3. Insert the **Paint Pal Deluxe** driver CD and define the correct path to load driver from CD-ROM

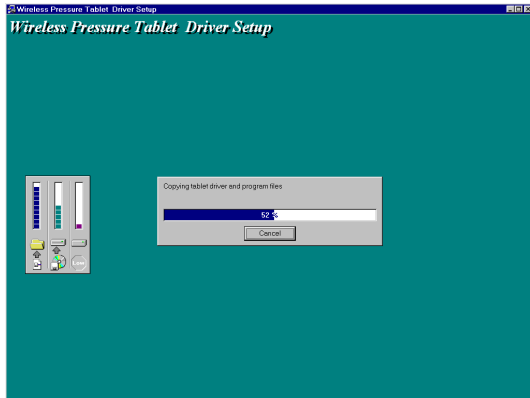


4. You will then see a Window welcoming you to the Tablet driver. (see the diagrams below ). Click **Next** when you are ready to continue.

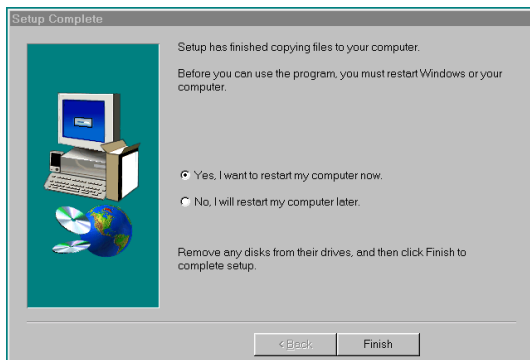


5. System will ask where that you wish to place the driver. You can select the default folder by just clicking **Next**, or type in your own preference.

6. You can then select the folder for the program icons that come with **Paint Pal Deluxe**. Click **Next** when you are ready to continue. The Tablet driver will then install.



7. After the installation ends, you will need to reboot your system to start using your **Paint Pal Deluxe**.



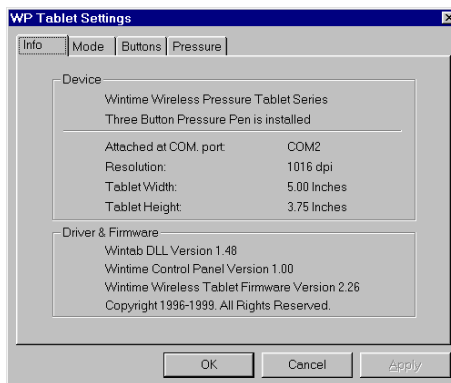
# Customizing the Pen Tablet

---

## Finding the Pen Tablet icon

After you have installed your pen tablet, it is easy to customize according to your own personal preferences.

1. The pen tablet icon can be found under the Windows Control Panel. Click on this icon, and the “**WP Tablet Settings**” parameter window will appear.



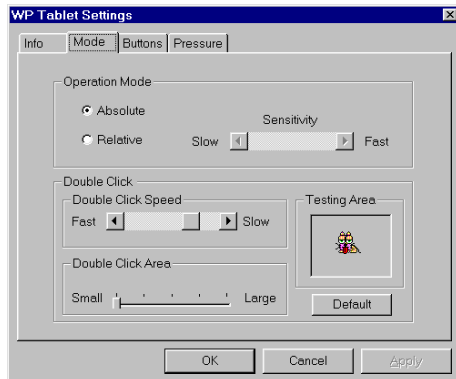
2. There are four pages in this window: **Info**, **Mode**, **Buttons**, and **Pressure**. The details as :

### Info

This page shows the basic information of the Device, Firmware and Driver (see diagram above).

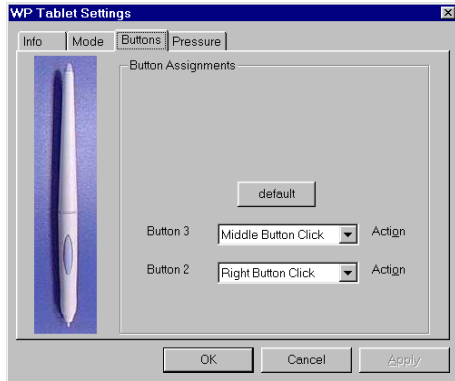
## Mode

There are two major settings in this page: Operation Mode and Double Click. In “**Operation Mode**” area, you may select Absolute Mode or Relative Mode, you may also define the sensitivity of the Relative Mode here. In “Double Click” area, you may define the double-click speed and double-click area here. There is a testing area for testing the double-click functions.



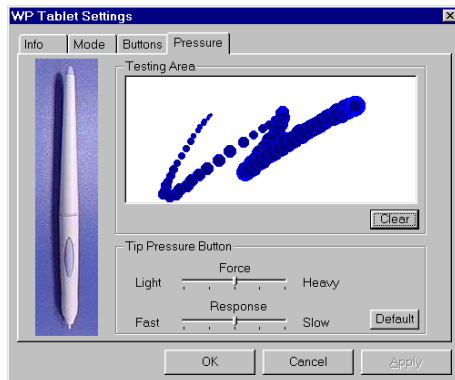
## Buttons

In this page, you may define the action of Button 2 and Button 3 here. There are 25 options for Button 2 and 14 options for Button 3. If you press “**default**” button, the action of these buttons will back to manufacturer default settings. Manufacturer default settings are Button 1 as Mouse’s left button, Button 2 as Mouse’s right button and Button 3 as Mouse’s middle button.



## Pressure

You may define the pressure sensitivity of Tip Button in this page. There are two elements “Force” and “Response”, are adjustable. There is a testing area for testing the pressure sensitivity.



---

## **Taking Care of Your Tablet**

---

### **Working environment**

Paint Pal Deluxe must be installed at temperatures between 41<sup>o</sup> F to 104<sup>o</sup> F (5<sup>o</sup> C to 40<sup>o</sup> C), and humidity of 10 to 80 percent.

Paint Pal Deluxe may not function properly if these conditions are not met.

### **How to clean Tablet**

1. Be sure to use soft textures and natural cleaners to clean the Tablet.
2. Do not use chemicals or gasoline to clean the surface of the Tablet.
3. Please do not place anything that is very hot (like a coffee cup) on the Tablet's surface.



---

## Questions and Answers

---

### **What do I need to use Paint Pal Deluxe?**

The hardware requirements for Paint Pal Deluxe are:

- Intel Pentium level computer or compatible.
- Windows 95/98 operating system.
- 32MB RAM
- 80 MB hard disk space
- 256 color VGA display adapter(Hi-color or True-color preferred)
- Serial port
- CD-ROM drive

### **What are the buttons on the stylus pen for?**

Buttons on the stylus pen are the same as buttons on a mouse. The Tip-Button is just like the left button on a mouse. The Button 2 (one near the tip) is corresponds to the button on the right side of a mouse. The Button 3 (one near the base) is the same as the button in the middle of a mouse.

### **Can a pen and mouse be used at the same time?**

As long as you have enough open ports, Paint Pal Deluxe and a mouse can be used at the same time.

## Specifications

---

Model	: WP504
Active Area	: 5 x 3.75 inches
Resolution	: Default 1000, can be set up to 2048 lpi
Accuracy	: +/- 0.5mm / 0.0125 inches
Proximity	: 0.5 inch
Report Rate	: Up to 120 per second
Pressure Level	: 512 levels
Technology	: Electromagnetic
Certifications	: FCC Class B, CE, BCIQ, UL
Data Format	: Packed binary
Interface Type	: RS-232C
Baud Rate	: Default 9600
Frame	: 1 start bit, 8 data bits, none parity bit, 1 stop bit
Dimensions	: 205.5 x 207.1 x 10.5 mm (L x W x H)
Weight	: 400 g
Operation Temp.	: 5 <sup>o</sup> to 40 <sup>o</sup> C (32 <sup>o</sup> to 132 <sup>o</sup> F)

# FCC Compliance Statement

---

This equipment has been tested and found to comply with the limits for a Class B digital device, pursuant to Part 15 of FCC Rules. These limits are designed to provide reasonable protection against harmful interference when the equipment is operated in a residential installation.

This equipment generates, uses, and can radiate radio frequency energy and if not installed and used in accordance with the instruction manual may cause harmful interference to radio communications. However, there is no guarantee that interference will not occur in a particular installation.

If this equipment causes harmful interference to radio or television reception, which can be determined by turning the equipment off and on, the user is encouraged to try to correct the interference by one or more of the following measures:

- Reorient the receiving antenna.
- Increase the separation between the equipment and receiver.
- Connect the equipment into an outlet on a circuit different from that to which the receiver is connected.

Changes or modifications not expressly approved by the party responsible for compliance can void the user's authority to operate the equipment. This product is equipped with a shielded cable. Extension cable, if used, must be shielded in order to comply with the emission limits. Operation of this device is subject to the following conditions: (1) This device may not cause harmful interference, and (2) this device must accept any interference received, including interference that may cause undesired operation.