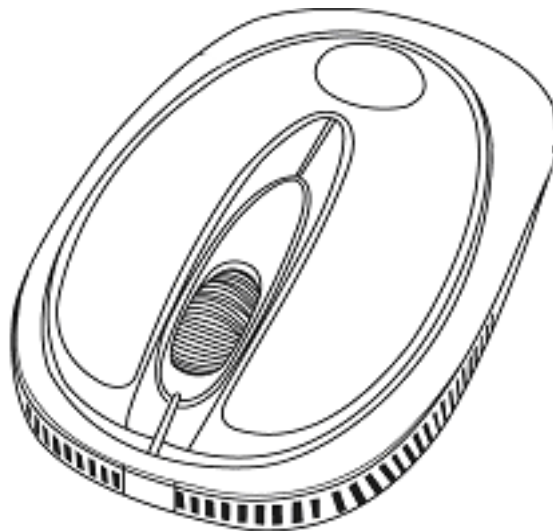




Optical 2.4GHz Wireless Nano Mouse

**Model #: MP2175BLU, MP2275RED,
MP2375BLK, MP2475PUR**



User Manual

**All brand name and trademarks are the property of their respective companies
Mac and Mac OS X are registered trademarks of Apple Inc;
Windows, Windows XP, Windows Vista, Windows 7 and Windows 8 and Windows 10 are
registered trademarks of Microsoft Corporation in the United States and /or other countries.**

USER'S RECORD:

To provide quality customer service and technical support, it is suggested that you keep the following information as well as your store receipt and this user's manual.

Date of Purchase: _____

Model Number: _____

Serial Number: _____

Product Rev Number (located below the UPC on the package): _____

FCC WARNING:

Any Changes or modifications not expressly approved by the party responsible for compliance could void the user's authority to operate the equipment.

This device complies with part 15 of the FCC Rules. Operation is subject to the following two conditions: (1) This device may not cause harmful interference, and (2) this device must accept any interference received, including interference that may cause undesired operation.

FCC RADIATION EXPOSURE STATEMENT:

This equipment complies with FCC radiation exposure limits set forth for an uncontrolled environment.

This transmitter must not be co-located or operating in conjunction with any other antenna or transmitter.

CAUTION!

The Federal Communications Commission warns the user that changes or modifications to the unit not expressly approved by the party responsible for compliance could void the user's authority to operate the equipment.

PACKAGE CONTENTS:

Your new Wireless Optical Mouse will ship with the following items.

- Wireless Optical Nano Mouse
- Nano Receiver
- 2 AAA Batteries
- User Manual
- Warranty Information

SYSTEM REQUIREMENTS:

Please be sure that you meet all of the system requirements below to avoid difficulties during installation

Compatible with: PCs, Mac® computers, and Chromebook™ notebook computers

Works with:

- Windows® XP, Windows® Vista , Windows® 7 and Windows® 8 and Windows® 10 operating systems
- Mac OS X® 10.3 and Above
- An Available USB Port

SPECIFICATIONS:

Your new Wireless Optical Mouse complies with the following specifications.

- USB Interface

INSTALLING BATTERIES:

To properly install batteries into your Mouse, please follow the instructions below:

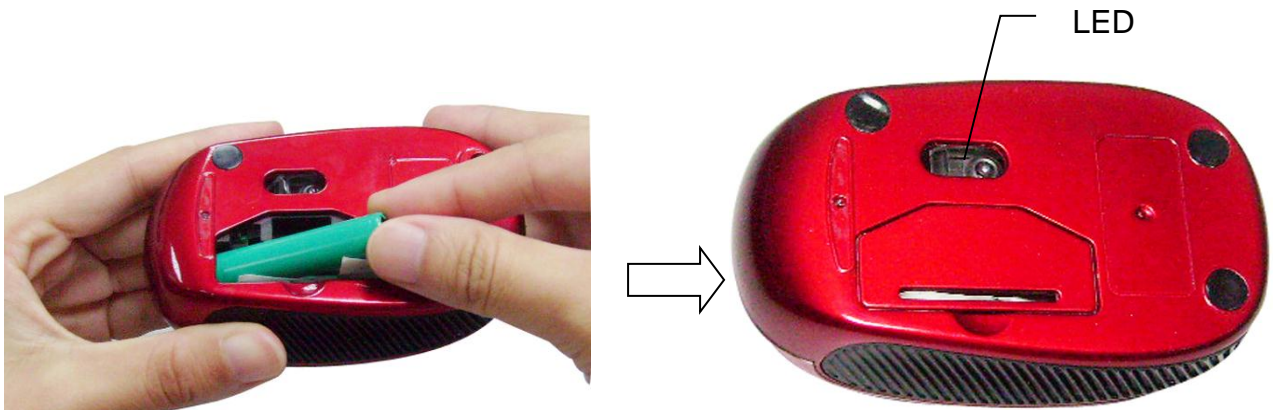
1. Pull the Battery Compartment Release Latch at the bottom of your Mouse and remove the Battery Compartment Cover from your Mouse.



Note: Remove the Battery Compartment Cover from your Mouse gently, otherwise the Nano Receiver stowed inside the battery bay will pop out.



2. Install two AAA Batteries into your Mouse following the battery orientation guide in the battery bay, make sure the guide is under the batteries so that you can remove the batteries out of the battery bay easily, then replace the Battery Compartment Cover back onto your Mouse until it securely locks.



Note: The LED at the bottom of your mouse will flash one time after Batteries have been installed into your Mouse properly, the LED will remain on when the Nano Receiver is connected to your computer.

INSTALLATION:

For All Operating Systems

1. Make sure you have successfully installed the Batteries into your Mouse, refer to the **Installing Batteries** section in this manual if necessary.
2. Turn on your computer, plug the enclosed Nano Receiver into an available USB port on your computer. (**TIP:** If you are not able to find an available USB port on your computer, please refer to the user's manual of your computer for more detail.



3. Your wireless optical mouse is now ready to be used.

CHANGING THE SPEED OF YOUR MOUSE:

To adjust the speed of the cursor or the scroll button features on your computer, please follow the instructions below:

NOTE: The screenshots show in this section are for demonstration only and your screen may look slightly different but with similar options.

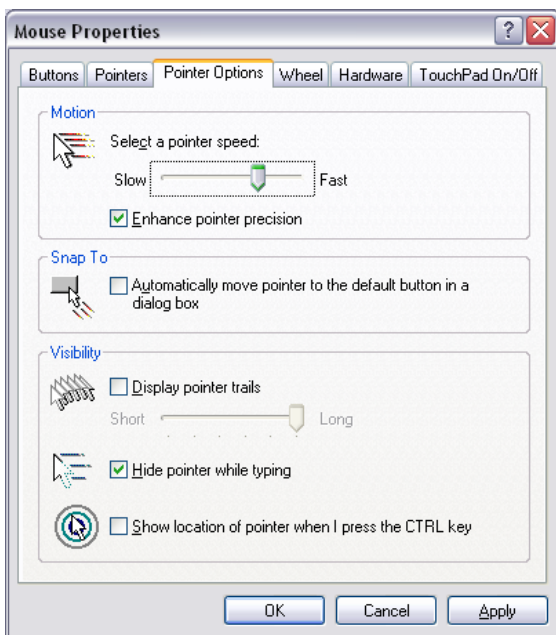
For Windows® operating systems

Open the “**Control Panel**”, and double-click the “**Mouse**” icon to open the mouse properties screen, and then select the “**Pointer Options**”. After you have made your changes; select “**Apply**”, and then “**OK**”.

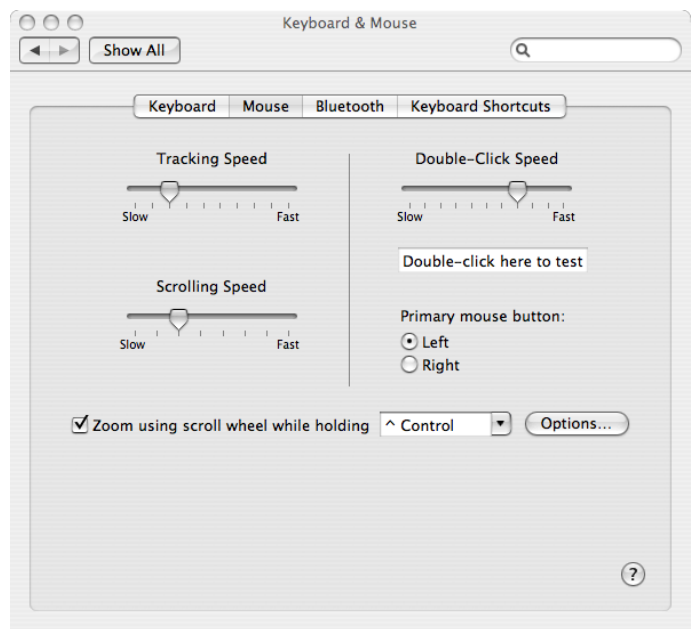
For Mac OS X® 10.3 and Above

Open the “**System Preferences**”. At the **System Preferences** screen, click the “**Keyboard & Mouse**” icon to open the **Keyboard & Mouse** screen, and then select the “**Mouse**” tab and make your changes.

- Windows® operating systems



Mac OS X® 10.3 and Above





WARRANTY INFORMATION:



Gear Head, LLC warrants that this product shall be free from defects in materials and workmanship for the reasonable lifetime of the product. If the product is defective, Gear Head, LLC's sole obligation under this warranty shall be at its election, subject to the terms of this warranty, to repair or replace any parts deemed defective. This warranty is for the exclusive benefit of the original purchaser and is not assignable or transferable. THIS WARRANTY IS MADE IN LIEU OF ALL OTHER WARRANTIES, EXPRESS OR IMPLIED, AND ANY IMPLIED WARRANTIES, INCLUDING THE IMPLIED WARRANTIES OF MERCHANTABILITY AND FITNESS FOR A PARTICULAR PURPOSE, ARE LIMITED TO THE TERMS OF THIS WARRANTY, UNLESS OTHERWISE PROHIBITED BY LAW.

Exclusions

To the fullest extent permitted by law, Gear Head, LLC expressly disclaims and excludes from this warranty any liability for damages, including but not limited to general, special, indirect, incidental, consequential, aggravated, punitive or exemplary damages, and economic loss (even if Gear Head™ is informed of their possibility), third party claims against you, including for any loss or damages, and claims or damages related to loss of, or, damage to, your records or data. This warranty does not apply to any product the exterior of which has been damaged or defaced. This warranty will be voided by misuse, improper physical environment, improper repair, acts of God, war or terror, commercial use, and improper service, operation or handling.

Technical Support

Please access Technical Support on the web or contact our technicians at info@pcgearhead.com for help.

www.pcgearhead.com

Gear Head™ provides phone support, 866-890-7115, Monday - Friday from 9:00 am – 5:30 pm Eastern Time. Before calling, please make sure you have available the Model # (located on the front page of your User Manual) and information regarding your computer's operating system.

Return Merchandise for Service

Any claim under this warranty must be made in writing to Gear Head, LLC, within 30 days after the owner discovers the circumstances giving rise to any such claim, and must include a copy of this warranty document, a receipt or copy of your invoice marked with the date of purchase, and the original packaging. You may contact us on the web at www.pcgearhead.com or by emailing us at info@pcgearhead.com to receive service or request a return service authorization.

Warning:

This device complies with Part 15 of the FCC Rules. Operation is subject to the following two conditions: (1) this device may not cause harmful interference, and (2) this device must accept any interference received, including interference that may cause undesired operation. changes or modifications not expressly approved by the party responsible for compliance could void the user's authority to operate the equipment.

NOTE: This equipment has been tested and found to comply with the limits for a Class B digital device, pursuant to Part 15 of the FCC Rules. These limits are designed to provide reasonable protection against harmful interference in a residential installation. This equipment generates, uses and can radiate radio frequency energy and, if not installed and used in accordance with the instructions, may cause harmful interference to radio communications. However, there is no guarantee that interference will not occur in a particular installation. If this equipment does cause harmful interference to radio or television reception, which can be determined by turning the equipment off and on, the user is encouraged to try to correct the interference by one or more of the following measures:

- Reorient or relocate the receiving antenna.
- Increase the separation between the equipment and receiver.
- Connect the equipment into an outlet on a circuit different from that to which the receiver is connected.
- Consult the dealer or an experienced radio/TV technician for help.

NOTE: This device and its antenna(s) must not be co-located or operation in conjunction with any other antenna or transmitter.