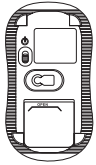


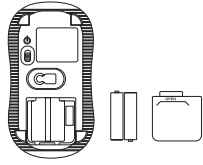
## 1. Installing the Batteries

The RF2.4GHz optical mouse use two AAA alkaline



Open the cover of the battery compartment

①



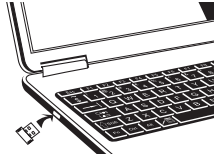
Insert the batteries as shown inside the battery compartment  
Replace the cover

②

## 2. Connecting the Receiver

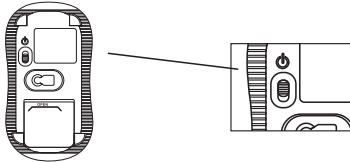


Nano receiver



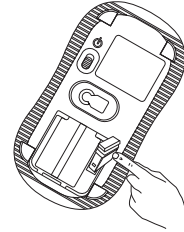
Insert the Nano receiver into USB port of the computer

## 3. Connecting the Receiver



Turn the power on

## Obtain the receiver on the mouse



1. When you want use the mouse, you can take out the receiver to computer
2. When you need stop the work, you can store the receiver in the mouse

## Power-Save function

This mouse is equipped with Traveling-Power-Save function

- When you are traveling with this mouse, the LED of the mouse will be switched off automatically for the purpose of power-save, but the pre-condition is that the receiver is disconnected with your notebook or PC
- When your mouse no any click or scroll or moving, the mouse will come to sleep state for the economize after about 30 minutes, for the wake up, you can click any button for this

FCC NOTE: This device complies with Part 15 of the FCC Rules.

Operation is subject to the following two conditions: 1. This device may not cause harmful interference, and

2. This device must accept any interference received, including interference that may cause undesired operation.

FCC Information: Caution: Any changes or modifications not expressly approved by the party responsible for compliance could void the user's authority to operate this equipment. This equipment has been tested and found to comply with the limits for a Class B Digital Device, pursuant to Part 15 of the FCC Rules. These limits are designed to this equipment generates, uses, and can radiate radio frequency energy and, if not installed and used in accordance with the instructions, may cause harmful interference to radio communications. However, there is no guarantee that interference will not occur in a particular installation. If this equipment does cause harmful interference to radio or television reception, which can be determined by turning the radio or television off and on, the user is encouraged to try to correct interference by one or more of the following measures.

- . Reorient or relocate the receiving antenna.
- . Increase the separation between the equipment and receiver.
- . Connect the equipment into an outlet on another circuit.
- . Consult the dealer or an experienced radio/TV technician for help.